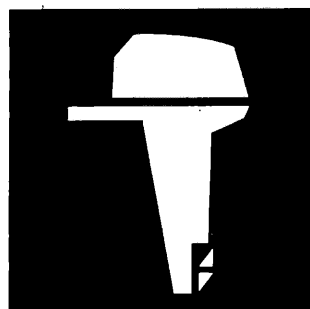


**YAMAHA**



**PARTS  
CATALOGUE  
CATALOGUE  
DE PIÈCES DÉTACHÉES**

**F20A'98(65W)**

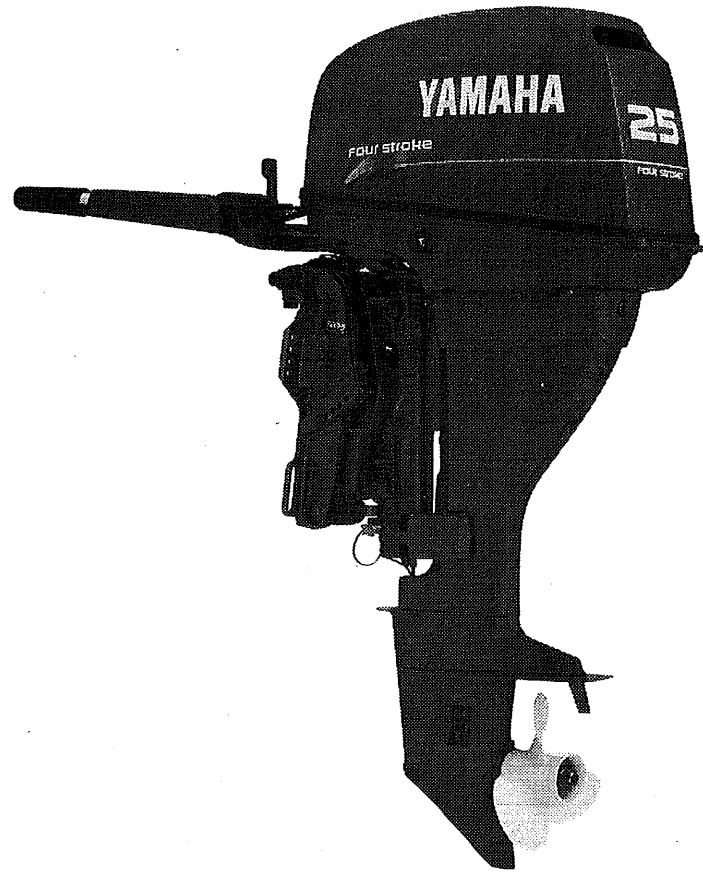
**F25A'98(65W)**

---

**YAMAHA**  
**GENUINE**  
Parts & Accessories

1W65W-300F2





## FOREWORD

This Parts Catalogue is related to the parts for the model(s) in the below frame. When you are ordering replacement parts, please refer to this Parts Catalogue and quote both part numbers and part names correctly.

F20A'98(65W), F25A'98(65W)

1. Modifications or additions which have been made after issue of the Parts Catalogue will be announced in the Yamaha Parts News.

It is advisable that you make necessary corrections to the Parts Catalogue according to the Yamaha Parts News.

2. Abbreviations

The Following abbreviations are used in this Parts Catalogue.

"UR" Use specified parts number.

"UN" Use as many as needed.

"AP" Alternate Parts

"LM" Local Made

(Parts need to be ordered locally)

"O/S" Over Size

3. Parts, which are to be supplied in an assembly, are listed with a dot(.) in front of the part name as shown below.

EXAMPLE

CARBURETOR ASSY

.JET, PILOT

.NOZZLE, MAIN

4. Number of component for assembly

The numeral appearing to the right of each component part indicates the quantity of parts for each assembly unit.

EXAMPLE

PART NO.	DESCRIPTION	E	EH	ET	REMARKS
6E0-85500-70	C.D.I. MAGNETO ASSY	1			
6E0-85550-70	.ROTOR ASSY	1			
6E0-15723-00-94.	PULLY, STARTER	1			

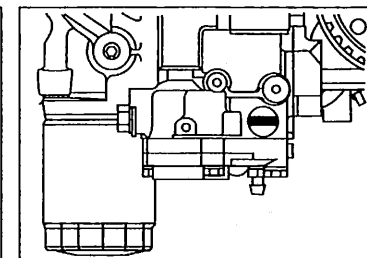
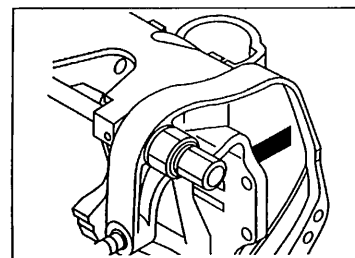
5. Quantity Column Information

NAME for Q'TY COLUMN	APPLICABLE MODEL
E	F20AE, F25AE
EH	F20AEH, F25AEH
ET	F20AET, F25AET

6. Applicable Serial No. and Color Code

1) Engine Sserial No.

F20AE	S : 100101 ~ L : 500101 ~	F25AE	S : 000101 ~ L : 300101 ~
F20AEH	S : 700101 ~ L : 800101 ~	F25AEH	S : 050101 ~ L : 350101 ~
F20AET	L : 600101 ~	F25AET	L : 400101 ~



- 2) Color Code

Color Code	Color Name	Abbreviation
004D	DARK BLUISH GRAY METALLIC 2	DBNM2

7. Note that the illustrations for reference in funding parts numbers, not to be used for assembling. When assembling, pleas use the applicable service manual.

8. The asterisk (\*) before a reference number indicates modification items after the first edition.

## AVANT-PROPOS

Ce Catalogue de pièces détachées concerne les pièces pour le(s) modèle(s) indiqué(s) dans le cadre ci-dessous. Lorsque vous commandez des pièces de rechange, veuillez vous référer à ce catalogue de pièces détachées et indiquer clairement les numéros et les noms des pièces détachées.

F20A'98(65W), F25A'98(65W)

1. Les modifications ou ajouts ayant été effectués après la parution du catalogue de pièces détachées seront décrits dans les Bulletins d'information Yamaha concernant les pièces détachées. Il est recommandé que vous apportiez les corrections nécessaires au catalogue des pièces détachées en vous référant aux Bulletins d'information Yamaha.

### 2. Abréviations

Dans ce catalogue, les abréviations suivantes sont utilisées:

"UR" Utiliser le numéro des pièces.

"UN" Utiliser autant que nécessaire.

"AP" Pièces de substitution

"LM" Fabrication locale (les pièces doivent être commandées localement.)

3. Dans ce catalogue, les pièces qui sont fournies dans un ensemble sont précédées d'un point (.) de la manière indiquée ci-dessous.

#### EXEMPLE

ENS CARBURATEUR

.GICLEUR, ralenti

.PUITS D'AIGUILLE

4. Nombre de pièces composant un ensemble

Le chiffre apparaissant à la droite de chaque description indique la quantité de pièces pour chaque ensemble de pièces.

#### EXEMPLE

NO. PIECES	DESCRIPTION	W	E	HE	REMARQUES
6E0-85500-70	MAGNETO C.D.I. CPLT	1			
6E0-85550-70	.ROTOR CPLT	1			
6E0-15723-00-94	..POULIE DE DEMARREUR	1			

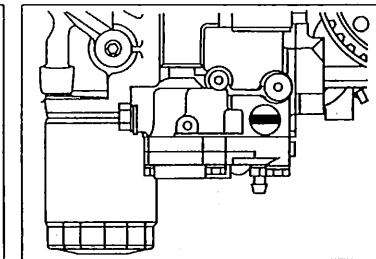
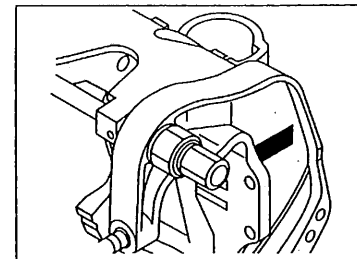
5. Indication concernant la quantité

Indication concernant la quantité	Applications modèle
E	F20AE, F25AE
EH	F20AEH, F25AEH
ET	F20AET, F25AET

6. Applications No de série et code couleur correspondants

#### 1) No. de série du moteur

F20AE	S : 100101 ~	F25AE	S : 000101 ~
	L : 500101 ~		L : 300101 ~
F20AEH	S : 700101 ~	F25AEH	S : 050101 ~
	L : 800101 ~		L : 350101 ~
F20AET	L : 600101 ~	F25AET	L : 400101 ~



#### 2) Code couleur

Code couleur	Nom de couleur	Abréviation
004D	DARK BLUISH GRAY METALLIC 2	DBNM2

7. Veuillez noter que les illustrations sont indiquées pour référence pour trouver les numéros de pièces, non pour être utilisées lors de l'assemblage. Lors de l'assemblage, veuillez utiliser le manuel d'entretien adéquat.
8. L'astérisque (\*) placé devant un numéro de référence. indique des éléments qui ont été modifiés après la première édition.

# CONTENTS

## SHEET 1/2

CYLINDER. CRANKCASE 1 .....	A4
CYLINDER. CRANKCASE 2 .....	A6
CRANKSHAFT. PISTON .....	B1
VALVE .....	B2
INTAKE .....	B3
CARBURETOR .....	B4
OIL PUMP .....	B6
OIL PAN .....	B7
FUEL .....	C1
TOP COWLING .....	C3
BOTTOM COWLING .....	C4
BRACKET 1 .....	C6
BRACKET 2 .....	D3
BRACKET 3 .....	D5
POWER TRIM & TILT ASSY .....	D7
STEERING 1 .....	E3
STEERING 2 .....	E6
CONTROL .....	E7
STEERING GUIDE ATTACHMENT 1 .....	F2
UPPER CASING .....	F3
LOWER CASING. DRIVE 1 .....	F4
LOWER CASING. DRIVE 2 .....	F7

## INDEX

NUMERICAL INDEX .....	G1
-----------------------	----

## SHEET 2/2

GENERATOR .....	A4*
STARTING MOTOR .....	A5*
ELECTRICAL 1 .....	A6*
ELECTRICAL 2 .....	B1*
ELECTRICAL 3 .....	B3*
REPAIR KIT 1 .....	B4*
REPAIR KIT 2 .....	B5*
REPAIR KIT 3 .....	B6*

## INDEX

NUMERICAL INDEX .....	G1*
-----------------------	-----

# TABLE DES MATIERES

## Feuille 1/2

CYLINDRE. CARTER 1 .....	A4
CYLINDRE. CARTER 2 .....	A6
VILEBREQUIN. PISTON .....	B1
SOUPAPE .....	B2
ADMISSION .....	B3
CARBURATEUR .....	B4
POMPE A HUILE .....	B6
VENTILATEUR D'HUILE .....	B7
CARBURANT .....	C1
CAPOT SUPERIEUR .....	C3
CAPOT INFERIEUR .....	C4
SUPPORT 1 .....	C6
SUPPORT 2 .....	D3
SUPPORT 3 .....	D5
PUISSANCE PARER ET INCLINER .....	D7
DIRECTION 1 .....	E3
DIRECTION 2 .....	E6
COMMANDE .....	E7
DIRECTION GUIDE ACCESSOIRE 1 .....	F2
FOURREAU .....	F3
BOITIER D'HELICE, TRANSMISSION 1 .....	F4
BOITIER D'HELICE, TRANSMISSION 2 .....	F7

## INDEX

NUMERICAL INDEX .....	G1
-----------------------	----

## Feuille 2/2

GENERATRICE .....	A4*
DEMARREUR ELECTRIQUE .....	A5*
PARTIE ELECTRIQUE 1 .....	A6*
PARTIE ELECTRIQUE 2 .....	B1*
PARTIE ELECTRIQUE 3 .....	B3*
KITS DE REPARATION 1 .....	B4*
KITS DE REPARATION 2 .....	B5*
KITS DE REPARATION 3 .....	B6*

## INDEX

NUMERICAL INDEX .....	G1*
-----------------------	-----

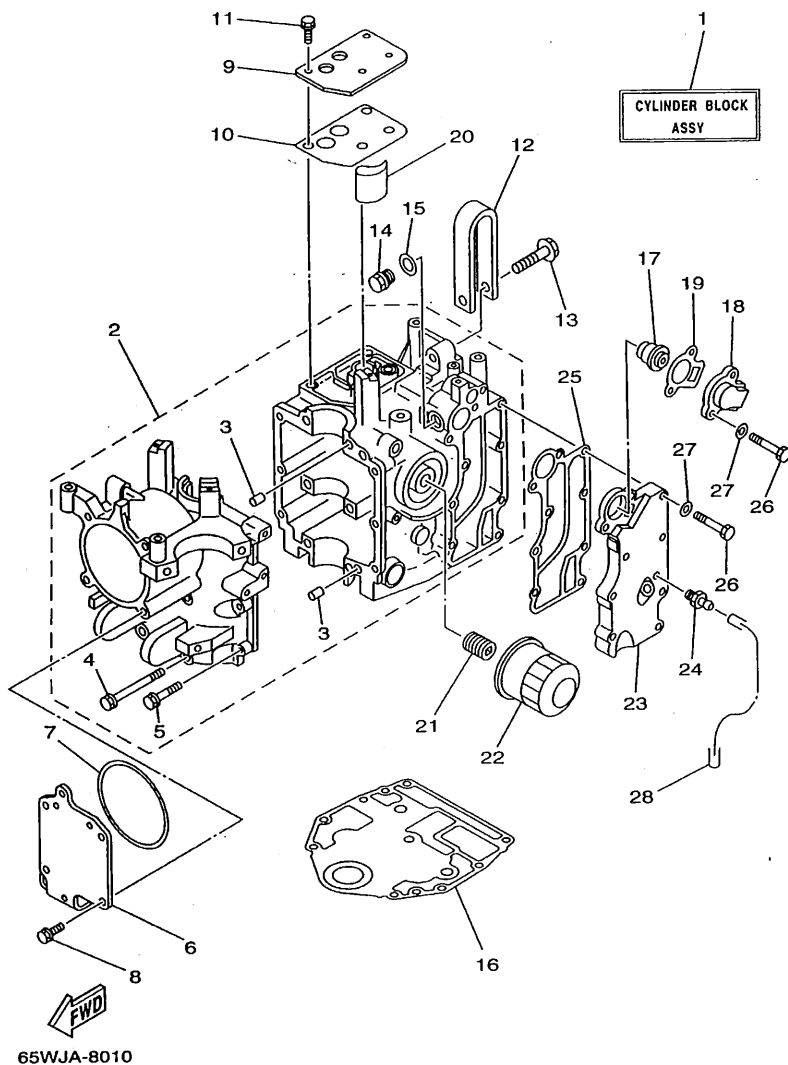
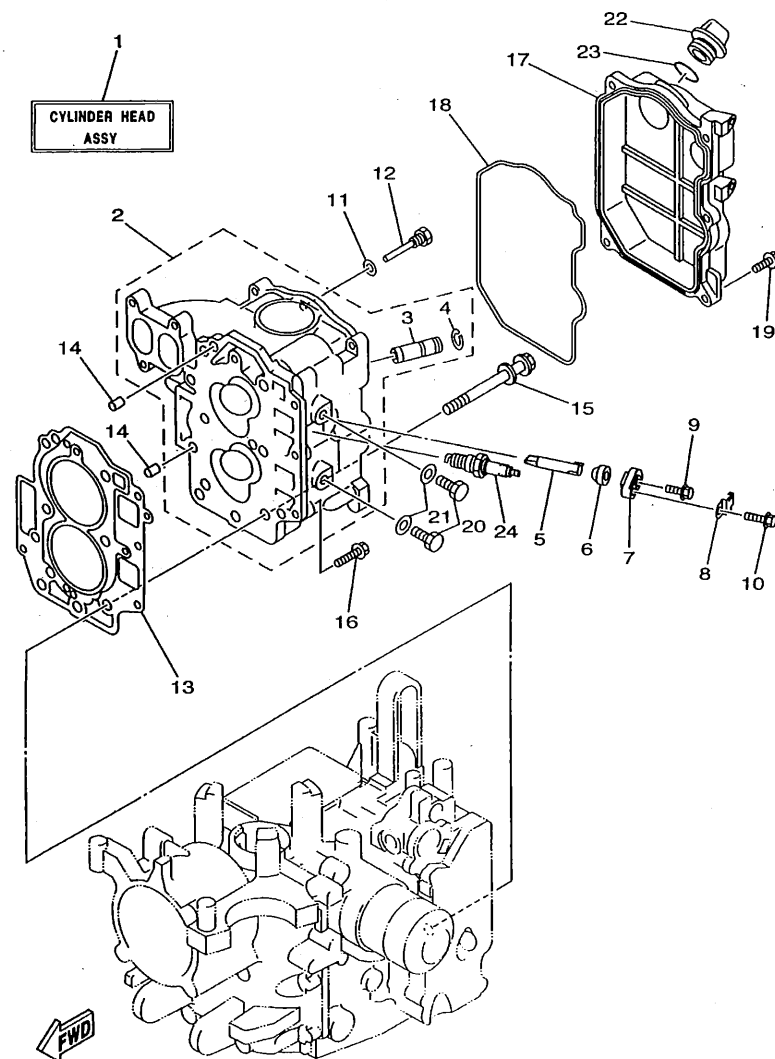


FIG. 1 CYLINDER. CRANKCASE 1 CYLINDRE. CARTER 1

REF. NO.	PART NO. NO. PIECES	DESCRIPTION DESCRIPTION	W	W	W		REMARKS REMARQUES
1	65W-W009B-00-4D	CYLINDER BLOCK ASSY CYLINDRE GROUPE (ENS.) ( REF.NO. 2-28, FIG.2, REF.NO. 13, FIG.3, REF.NO. 1-14, FIG.8, REF.NO. 1, FIG.23, REF.NO. 4, FIG.25, REF.NO. 24 )	1	1	1		
2	65W-15100-00-94	CRANKCASE ASSY CARTER DE MOTEUR COMPLET	1	1	1		
3	99530-08012	.PIN, DOWEL .GOUJON, D'ASSEMBLAGE	2	2	2		
4	90119-08M01	.BOLT, WITH WASHER .BOULON, AVEC RONDELLE	6	6	6		
5	97513-06535	.BOLT, WITH WASHER .VIS HEXAGONAL	6	6	6		
6	65W-15121-00	CRANKCASE 2 CARTER DE MOTEUR	1	1	1		
7	65W-15663-00	SEAL JOINT	1	1	1		
8	65W-12228-00	BOLT BOULON	4	4	4		
9	65W-11168-00	COVER, BREATHER COUVERCLE, RENIFLARD	1	1	1		
10	65W-11169-00	GASKET, BREATHER COVER JOINT, COUVERCLE DE RENIFLARD	1	1	1		
11	65W-12228-00	BOLT BOULON	4	4	4		
12	65W-11119-00	HANGER, ENGINE ANNEAU, LEVAGE	1	1	1		
13	65W-12157-00	BOLT BOULON	1	1	1		
14	90340-14M06	PLUG, STRAIGHT SCREW PLOT, FILETE DROIT	1	1	1		
15	90430-14115	GASKET JOINT	1	1	1		
16	65W-11351-00	GASKET, CYLINDER JOINT, D'EMBASE	1	1	1		
17	6G8-12411-02	THERMOSTAT THERMOSTAT	1	1	1		
18	6H3-12413-00-9M	COVER, THERMOSTAT COUVERCLE, THERMOSTAT	1	1	1		
19	65W-12414-00	GASKET, COVER JOINT, COUVERCLE	1	1	1		
20	65W-13286-00	CLEANER FILTRE	1	1	1		
21	90401-20M00	BOLT, UNION BOULON, RACCORD	1	1	1		
22	3FV-13440-00	ELEMENT ASSY, OIL CLEANER ELEMENT, FILTRE A HUILE	1	1	1		
23	65W-41113-00-94	OUTER COVER, EXHAUST COUVERCLE, ECHAPPEMENT	1	1	1		
24	62Y-12481-00	PIPE 1 DURITE 1	1	1	1		
25	65W-41114-00	GASKET, EXHAUST OUTER COVER JOINT, COUVERCLE D'ECHAPPEMENT	1	1	1		



[illegible]

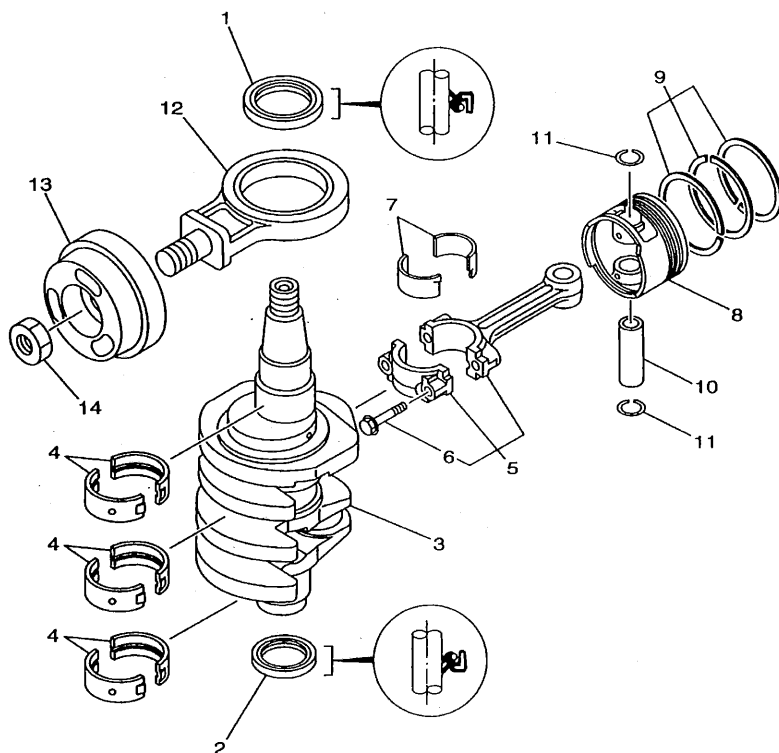


65WNV-8020

FIG. 2 CYLINDER. CRANKCASE 2 CYLINDRE. CARTER 2

REF. NO.	PART NO. NO. PIECES	DESCRIPTION DESCRIPTION	W	W	W	REMARKS REMARQUES
1	65W-W009A-00-4D	CYLINDER HEAD ASSY CULASSE (ENS.) ( REF.NO. 2~7, 10~12, 17~19, 22, 23, FIG.4, REF.NO. 1~14, FIG.7, REF.NO. 1~6, 11~15 )	1	1	1	UR
	65W-W009A-10-4D	CYLINDER HEAD ASSY CULASSE (ENS.) ( REF.NO. 2~7, 10~12, 17~23, FIG.4, REF.NO. 1~14, FIG.7, REF.NO. 1~6, 11~15 )	1	1	1	UR *ECM
2	65W-11111-00-94	HEAD, CYLINDER 1 CULASSE	1	1	1	UR
	65W-11111-10-94	HEAD, CYLINDER 1 CULASSE	1	1	1	UR *ECM
3	62Y-11133-10	.GUIDE, INTAKE VALVE .GUIDE, SOUP D'ADM	4	4	4	
4	93450-09M01	.CIRCLIP .CIRCLIP, TYPE S	4	4	4	
5	62Y-11325-00	ANODE ANODE	2	2	2	
6	66M-11328-00	GROMMET, ANODE PASSE-FIL	2	2	2	
7	66M-11327-00-94	COVER, ANODE COUVERCLE	2	2	2	
8	66M-12535-00	PLATE PLAQUE	2	2	2	
9	97595-05512	BOLT, WITH WASHER VIS HEXAGONAL	2	2	2	
10	97513-06520	BOLT, WITH WASHER VIS HEXAGONAL	2	2	2	
11	90430-06014	GASKET JOINT	1	1	1	
12	90109-06M65	BOLT BOULON	1	1	1	
13	65W-11181-10	GASKET, CYLINDER HEAD 1 JOINT, DE CULASSE 1	1	1	1	
14	99530-08012	PIN, DOWEL GOUJON, D'ASSEMBLAGE	2	2	2	
15	90119-09M00	BOLT, WITH WASHER BOULON, AVEC RONDELLE	6	6	6	
16	97513-06525	BOLT, WITH WASHER VIS HEXAGONAL	3	3	3	
17	65W-11191-00-94	COVER, CYLINDER HEAD 1 COUVERCLE, CULASSE 1	1	1	1	
18	65W-11356-00	SEAL, CYLINDER 2 JOINT, SPY CYLINDRE	1	1	1	
*ECM: FOR EMISSION CONTROL MODEL. *ECM: POUR MODELE CONTROLE D' EMISSIONS.						





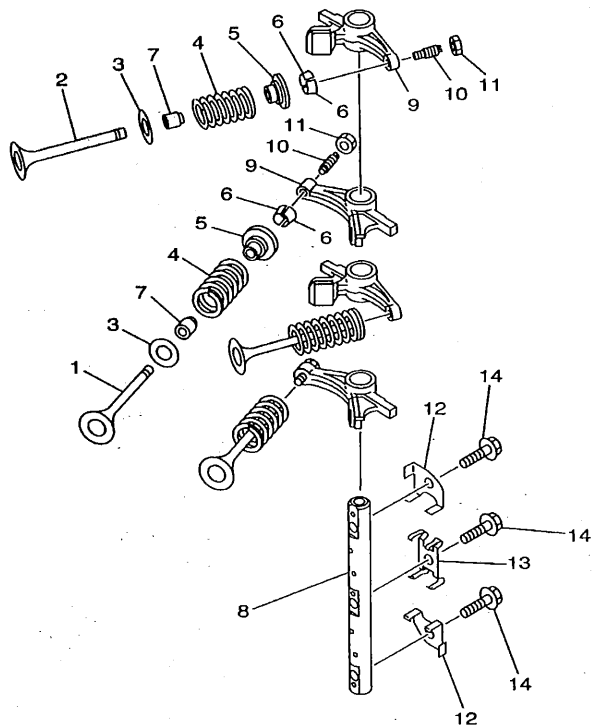
**FWD**  
65WJA-8030

**FIG. 3 CRANKSHAFT. PISTON**

**VILEBREQUIN. PISTON**

REF. NO.	PART NO. NO. PIECES	DESCRIPTION DESCRIPTION	W	W	W	REMARKS REMARQUES
1	93102-43M42	OIL SEAL JOINT SPY	1	1	1	
2	93102-35M47	OIL SEAL JOINT SPY	1	1	1	
3	65W-11411-00	CRANKSHAFT VILEBREQUIN COMPLET	1	1	1	
4	62Y-11416-00	PLANE BEARING, CRANKSHAFT 1 COUSSINET DE VILEBREQUIN	6	6	6	UR BROWN
	62Y-11416-10	PLANE BEARING, CRANKSHAFT 1 COUSSINET DE VILEBREQUIN	6	6	6	UR BLACK
	62Y-11416-20	PLANE BEARING, CRANKSHAFT 1 COUSSINET DE VILEBREQUIN	6	6	6	UR BLUE
5	62Y-11650-00	CONNECTING ROD ASSY BIELLE COMPLETE	2	2	2	
6	62Y-11654-00	.BOLT, CONNECTING ROD .BOULON, BIELLE	2	2	2	
7	62Y-11656-00	PLANE BEARING, CONNECTING ROD ROULEMENT DE BIELLE	4	4	4	UR BROWN
	62Y-11656-10	PLANE BEARING, CONNECTING ROD ROULEMENT DE BIELLE	4	4	4	UR BLACK
	62Y-11656-20	PLANE BEARING, CONNECTING ROD ROULEMENT DE BIELLE	4	4	4	UR BLUE
8	65W-11631-00-96	PISTON (STD) PISTON (STD)	2	2	2	
	65W-11635-00	PISTON (0.25MM O/S) PISTON (0.25MM O/S)	2	2	2	AP
	65W-11636-00	PISTON (0.50MM O/S) PISTON (0.50MM O/S)	2	2	2	AP
9	65W-11603-00	PISTON RING SET (STD) JUE DE SEGMENTS (STD)	2	2	2	
	65W-11604-00	PISTON RING SET (0.25MM O/S) JUE DE SEGMENTS (0.25MM O/S)	2	2	2	AP
	65W-11605-00	PISTON RING SET (0.50MM O/S) JUE DE SEGMENTS (0.50MM O/S)	2	2	2	AP
10	62Y-11633-00	PIN, PISTON AXE, PISTON	2	2	2	
11	93450-17129	CIRCLIP CIRCLIP, TYPE S	4	4	4	
12	65W-11665-00	CON-ROD ASSY, BALANCE BIELLE COMPLETE, BALANCE	1	1	1	
13	65W-11642-11	PISTON, BALANCE PISTON, BALANCE	1	1	1	
14	90170-20137	NUT ECROU	1	1	1	

**B1**

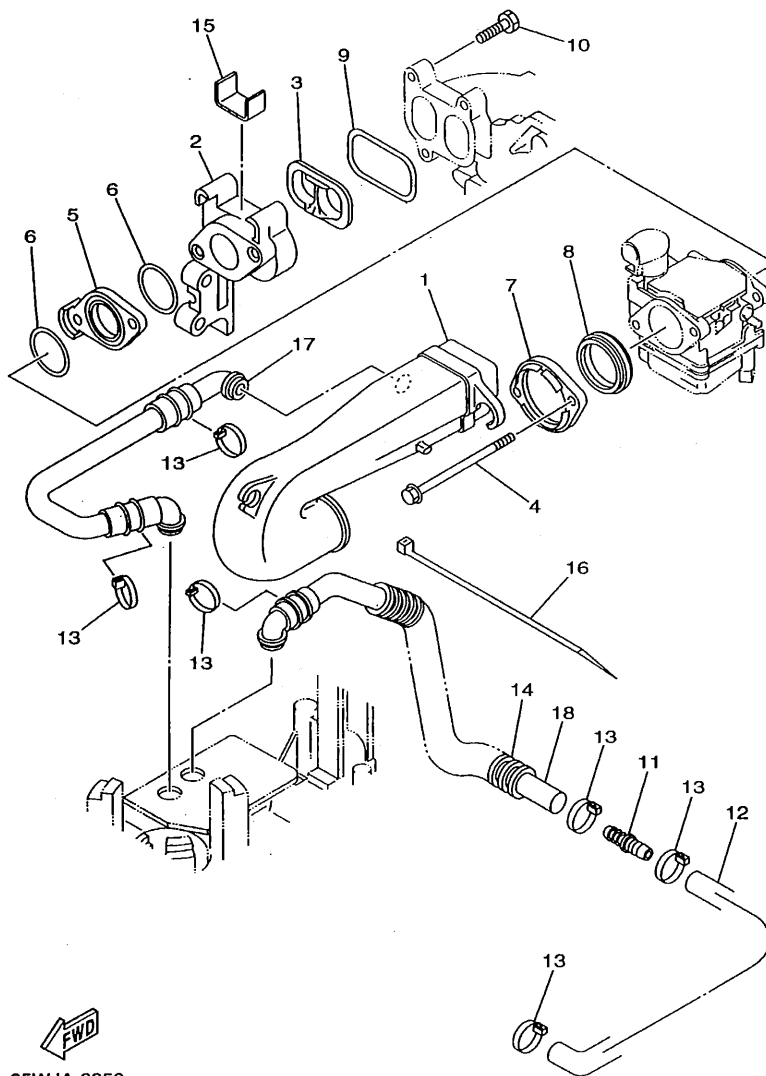


65WJA-8040

FIG. 4 VALVE

SOUPAPE

REF. NO.	PART NO. NO. PIECES	DESCRIPTION DESCRIPTION	W	W	W		REMARKS REMARQUES
1	65W-12111-00	VALVE, INTAKE SOUPAPE, ADMISSION	2	2	2		
2	62Y-12121-00	VALVE, EXHAUST SOUPAPE, ECHAPPEMENT	2	2	2		
3	62Y-12116-00	SEAT, VALVE SPRING SIEGE, RESSORT DE SOUPAPE	4	4	4		
4	51Y-12114-00	SPRING, VALVE OUTER RESSORT DE SOUPAPE, EXTERNE	4	4	4		
5	30X-12117-00	RETAINER, VALVE SPRING BUTEE DE RESSORT DE SOUPAPE	4	4	4		
6	30X-12118-00	COTTER, VALVE FRAISE, SOUPAPE	8	8	8		
7	51Y-12119-00	SEAL, VALVE STEM JOINT, QUEUE DE SOUPAPE	4	4	4		
8	65W-12146-00	SHAFT, ROCKER AXE, CULBUTEUR	1	1	1		
9	65W-12151-00	ARM, VALVE ROCKER CULBUTEUR	4	4	4		
10	62Y-12159-00	SCREW, VALVE ADJUSTING VIS, REGLAGE DE SOUPAPE	4	4	4		
11	62Y-12158-00	NUT, LOCK CONTRE-ECROU	4	4	4		
12	62Y-12238-00	PLATE, BOLT STOPPER PLAQUE, BUTEE DE BOULON	2	2	2		
13	62Y-12216-00	SPRING RESSORT	1	1	1		
14	90109-08M63	BOLT BOULON	3	3	3		

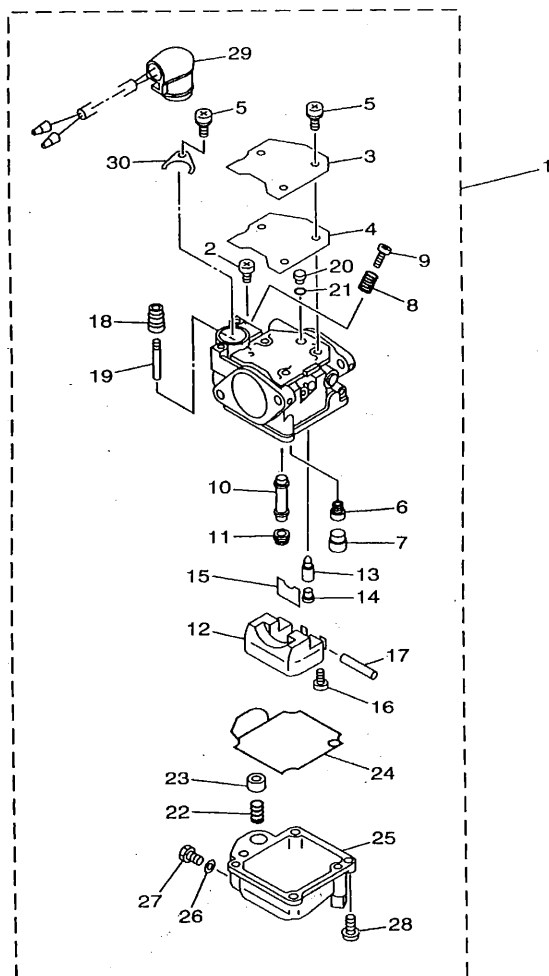


**FWD**  
65WJA-8050

**FIG. 5 INTAKE**

**ADMISSION**

REF. NO.	PART NO. NO. PIECES	DESCRIPTION DESCRIPTION	W	T W	L W		REMARKS REMARQUES
1	65W-14440-00	SILENCER ASSY, INTAKE SIENCIEUX D'ADMISSION	1	1	1		
2	65W-13640-00	MANIFOLD TUBULURE	1	1	1		
3	65W-13323-00	INSERT PIECE RAPPORTEE	1	1	1		
4	65W-14496-00	BOLT BOULON	2	2	2		
5	65W-14271-00	INSULATOR ISOLATEUR	1	1	1		
6	65W-14198-00	GASKET JOINT	2	2	2		
7	65W-14262-00	FLANGE COLLERETTE	1	1	1		
8	65W-14457-00	SEAL JOINT	1	1	1		
9	65W-13645-00	GASKET, MANIFOLD 1 JOINT, TUBULURE 1	1	1	1		
10	97595-06525	BOLT, WITH WASHER VIS HEXAGONAL	3	3	3		
11	65W-24377-00	PIPE, JOINT 3 DURITE RACCORDEMENT	1	1	1		
12	65W-15397-00	HOSE DURITE	1	1	1		
13	90465-13M36	CLAMP BRIDE	6	6	6		
14	90446-24M54	HOSE DURITE	1	1	1		
15	65W-14409-00	DAMPER AMORTISSEUR	1	1	1		
16	90465-11M52	CLAMP BRIDE	1	1	1		
17	65W-15370-00	BREATH ASSY RESPIADERO	1	1	1		
18	65W-15370-10	BREATH ASSY RESPIADERO	1	1	1		



65WJA-8080

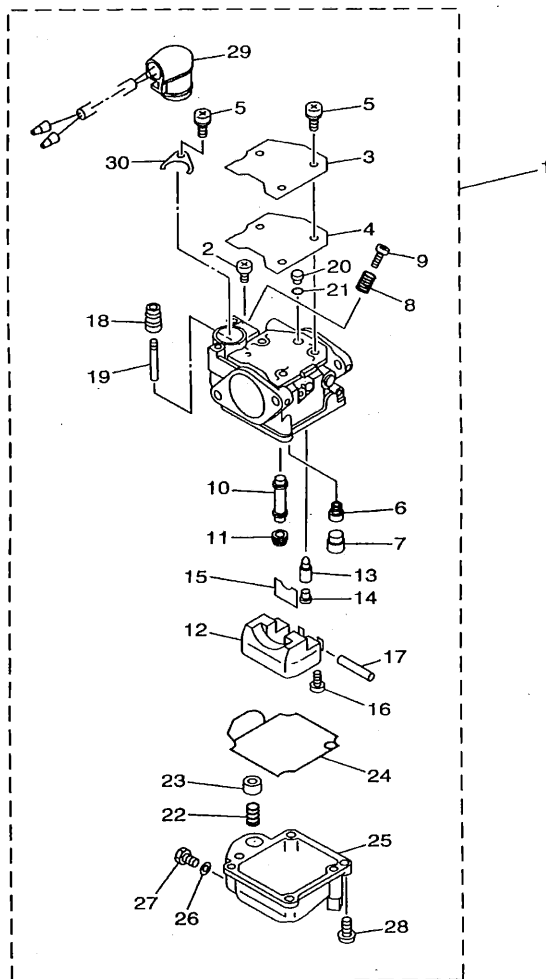
FIG. 6 CARBURETOR

CARBURATEUR

REF. NO.	PART NO. NO. PIECES	DESCRIPTION DESCRIPTION	W	I	E	REMARKS REMARQUES
1	65W-14901-00	CARBURETOR ASSY 1	1	1	1	UR
	65W-14901-21	CARBURATEUR 1 COMPLET	1	1	1	UR *ECM
2	98580-04006	.SCREW, PAN HEAD	1	1	1	
		.VIS, TETE TRONCONIQUE				
3	65W-14572-00	.PLATE	1	1	1	
		.PLAQUE				
4	65W-14126-00	.GASKET	1	1	1	
		.JOINT				
5	97803-04010	.SCREW, PAN HEAD	4	4	4	
		.VIS, TETE TRONCONIQUE				
6	676-14948-07	.JET (#50)	1	1	1	UR
		.GICLEUR (#50)				
	65W-14948-07	.JET (#50)	1	1	1	UR *ECM
		.GICLEUR (#50)				
7	679-14966-00	.RUBBER CAP	1	1	1	
		.CAOUTCHOUC CASQUILLO				
8	90501-10326	.SPRING, COMPRESSION	1	1	1	
		.RESSORT, COMPRESSION				
9	63V-14523-00	.SCREW, STOP	1	1	1	
		.VIS, BUTEE				
10	65W-14947-00	.JET, NEEDLE	1	1	1	UR
		.GICLEUR DE STARTER				
	65W-14947-20	.JET, NEEDLE	1	1	1	UR *ECM
		.GICLEUR DE STARTER				
11	65W-14943-29	.JET, MAIN (#110)	1	1	1	UR
		.GICLEUR, PRINCIPAL (#110)				
	65W-14943-28	.JET, MAIN (#105)	1	1	1	UR *ECM
		.GICLEUR, PRINCIPAL (#105)				
12	63V-14985-00	.FLOAT	1	1	1	
		.FLOTTEUR				
13	6G1-14546-00	.VALVE, NEEDLE	1	1	1	
		.POINTEAU				
14	676-14186-00	.PIN, FLOAT	1	1	1	
		.AXE, FLOTTEUR				
15	663-14159-00	.CLIP	1	1	1	
		.JONC				
16	98580-04008	.SCREW, PAN HEAD	1	1	1	
		.VIS, TETE TRONCONIQUE				
17	6H4-14548-00	.PIN, FLOAT ARM	1	1	1	
		.AXE, BRAS DE FLOTTEUR				
18	65W-14373-00	.COVER, PLUNGER CAP	1	1	1	
		.COUVERCLE DE PLONGEUR				
19	65W-14379-00	.ROD, STARTER	1	1	1	
		.TRINGLE, STARTER				
20	65W-1414F-00	.JET, PILOT (#52)	1	1	1	UR
		.GICLEUR, RALENTI (#52)				

\*ECM: FOR EMISSION CONTROL MODEL.

\*ECM: POUR MODELE CONTROLE D' EMISSIONS.



65WJA-8060

FIG. 6 CARBURETOR

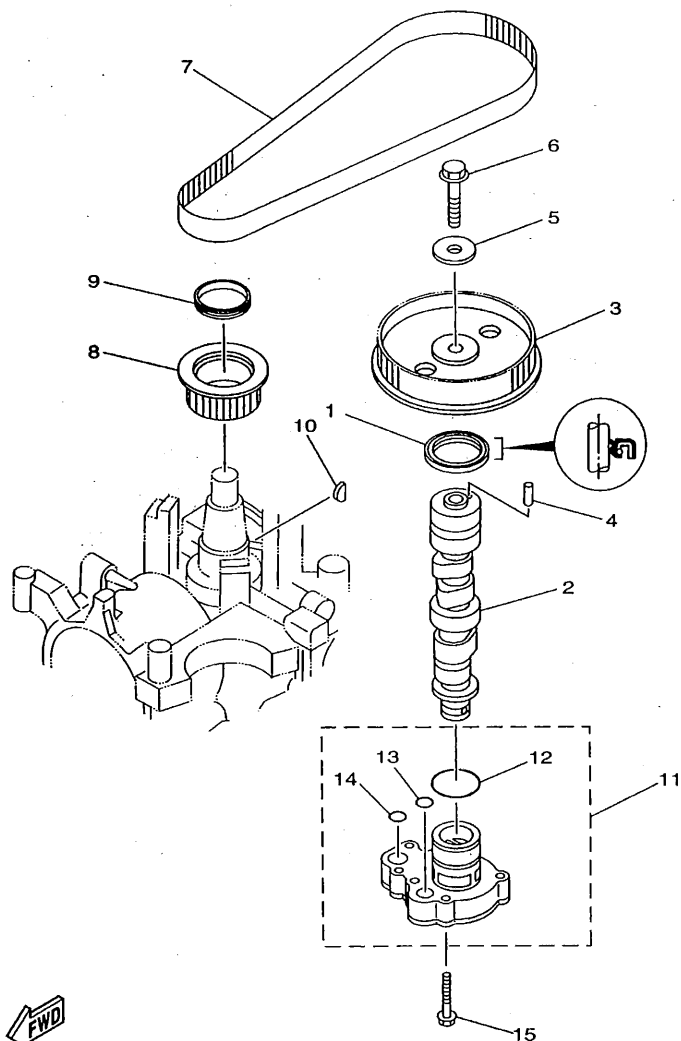
CARBURATEUR

REF. NO.	PART NO. NO. PIECES	DESCRIPTION DESCRIPTION	U	I	U		REMARKS REMARQUES
20	65W-1414J-08	.JET, PILOT (#52) .GICLÉUR, RALENTI (#52)	1	1	1		UR *ECM
21	65W-14147-00	.O-RING .JOINT TORIQUE	1	1	1		
22	65W-14335-00	.SPRING, PLUNGER .RESSORT, PLONGEUR	1	1	1		
23	65W-14371-00	.PLUNGER, STARTER .PLONGEUR, STARTER	1	1	1		
24	65W-14948-00	.GASKET, FLOAT CHAMBER .JOINT, CUVE DE FLOTTEUR	1	1	1		
25	65W-14980-00	.BODY, FLOAT CHAMBER .CORPS, CUVE DE FLOTTEUR	1	1	1		UR
	65W-14980-20	.BODY, FLOAT CHAMBER .CORPS, CUVE DE FLOTTEUR	1	1	1		UR *ECM
26	65W-14398-00	.GASKET .JOINT	1	1	1		
27	65W-14992-00	.SCREW, DRAIN .BOUCHON, PURGE	1	1	1		
28	97980-04114	.SCREW, WITH WASHER .VIS, AVEC RONDELLE	4	4	4		
29	65W-14380-00	.PRIME STARTER ASSY .DEMARREUR D'AMARCAGE ENS.	1	1	1		
30	65W-14346-00	.PLATE .PLAQUE	1	1	1		

\*ECM: FOR EMISSION CONTROL MODEL.

\*ECM: POUR MODELE CONTROLE D'EMISSIONS.





  
 65WJA-8070

FIG. 7 OIL PUMP

POMPE A HUILE

REF. NO.	PART NO. NO. PIECES	DESCRIPTION DESCRIPTION	W	W	W	REMARKS REMARQUES
1	93102-37M40	OIL SEAL JOINT SPY	1	1	1	
2	65W-12171-00	CAMSHAFT 1 ARBRE A CAMES 1	1	1	1	
3	65W-11537-00	GEAR, DRIVEN PIGNON SECONDAIRE	1	1	1	
4	93605-14143	PIN, DOWEL GOUJON	1	1	1	
5	90201-10M06	WASHER, PLATE RONDELLE, PLATE	1	1	1	
6	95895-10040	BOLT, FLANGE BOULON, A COLLERETTE	1	1	1	
7	65W-46241-00	V-BELT COURROIE TRAPEZOIDALE	1	1	1	
8	65W-11536-00	GEAR, DRIVE PIGNON SECONDAIRE	1	1	1	
9	65W-11476-00	SPRING RESSORT	1	1	1	
10	90280-04M06	KEY, WOODRUFF CLAVETTE, DEMI-LUNE	1	1	1	
11	65W-13300-00	OIL PUMP ASSY POMPE A HUILE COMPLET	1	1	1	
12	93210-33MH2	O-RING JOINT TORIQUE	1	1	1	
13	93210-12MG9	O-RING JOINT TORIQUE	1	1	1	
14	93210-14515	O-RING JOINT TORIQUE	1	1	1	
15	97513-06535	BOLT, WITH WASHER VIS HEXAGONAL	4	4	4	



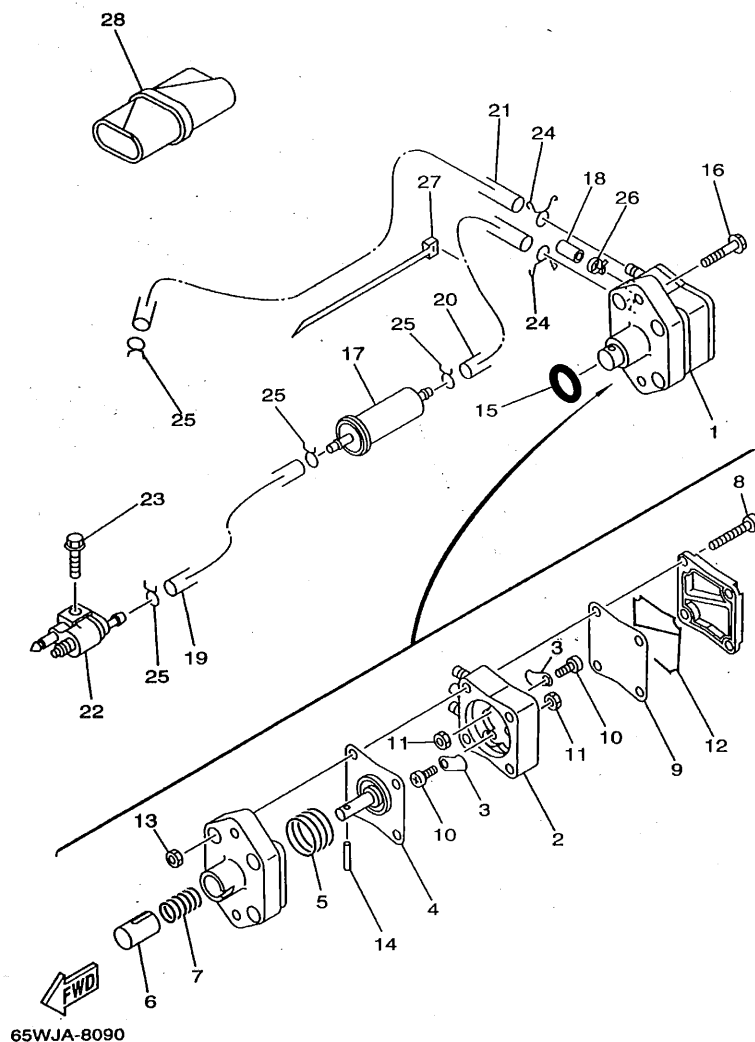
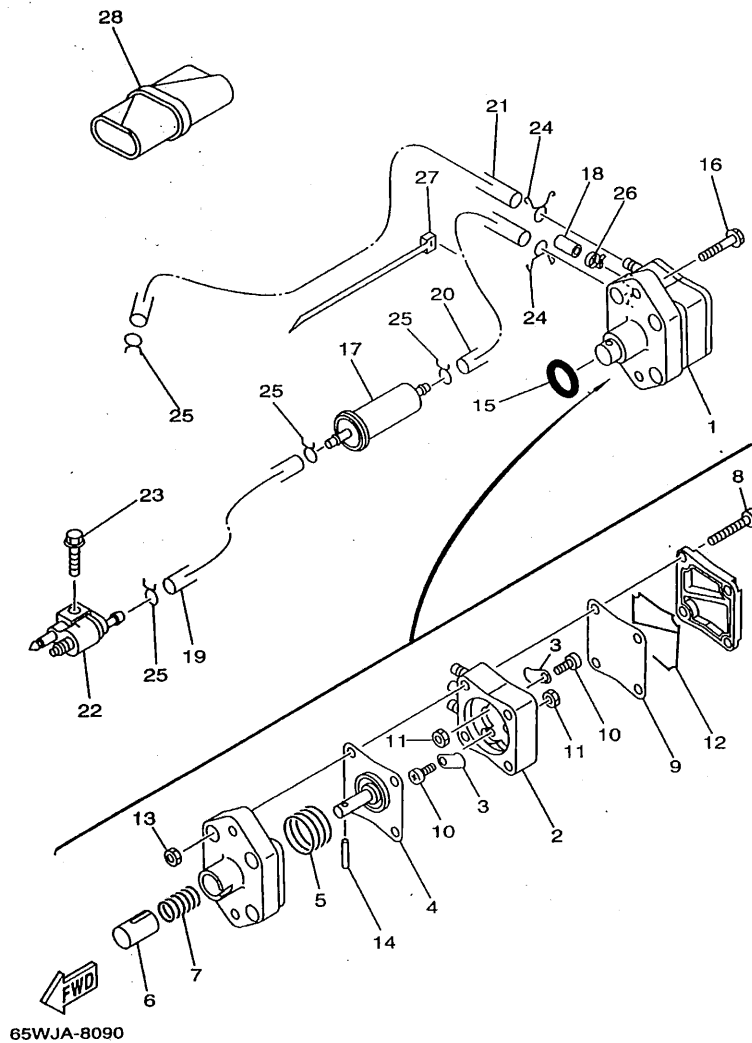


FIG. 9 FUEL

CARBURANT

REF. NO.	PART NO. NO. PIECES	DESCRIPTION DESCRIPTION	W	W	W	REMARKS REMARQUES
1	62Y-24410-02	FUEL PUMP ASSY POMPE A ESSENCE	1	1	1	
2	62Y-24413-00	.BODY 2 .CORPS 2	1	1	1	
3	62Y-24421-01	.VALVE, CHECK .SOUPAPE, RETENUE	2	2	2	
4	62Y-24411-02	.DIAPHRAGM .DIAPHRAGME	1	1	1	
5	62Y-24423-00	.SPRING, DIAPHRAGM .RESSORT, DIAPHRAGME	1	1	1	
6	62Y-13131-01	.PLUNGER .PLONGEUR	1	1	1	
7	62Y-24454-00	.SPRING .RESSORT	1	1	1	
8	62Y-24444-00	.SCREW .VIS	4	4	4	
9	62Y-24471-00	.DIAPHRAGM .DIAPHRAGME	1	1	1	
10	6A0-14325-00	.SCREW, PAN HEAD .VIS TETE CONIQUE	2	2	2	
11	95380-03600	.NUT .ECROU	2	2	2	
12	62Y-24452-00	.COVER .COUVERCLE	1	1	1	
13	95380-05600	.NUT .ECROU	4	4	4	
14	62Y-24374-01	.PIN .PIN	1	1	1	
15	93210-24M79	O-RING JOINT TORIQUE	1	1	1	
16	97595-06530	BOLT, WITH WASHER VIS HEXAGONAL	2	2	2	
17	65W-24251-00	STRAINER 1 FILTRE 1	1	1	1	
18	65W-24481-00	PLUG COUVERCLE	1	1	1	
19	90445-10M33	HOSE DURITE	1	1	1	
20	90445-10M03	HOSE DURITE	1	1	1	
21	90445-10M43	HOSE DURITE	1	1	1	
22	6G1-24304-02	FUEL PIPE JOINT COMP. 1 DURITE RACCORDEMT. A ESSENCE	1	1	1	
23	97595-06525	BOLT, WITH WASHER VIS HEXAGONAL	1	1	1	
24	90467-10M04	CLIP JONC	2	2	2	
25	90467-09M03	CLIP JONC	4	4	4	
26	90465-11M10	CLAMP BRIDE	1	1	1	
27	90465-13M18	CLAMP BRIDE	1	1	1	



**FIG. 9 FUEL**

**CARBURANT**

[illegible]

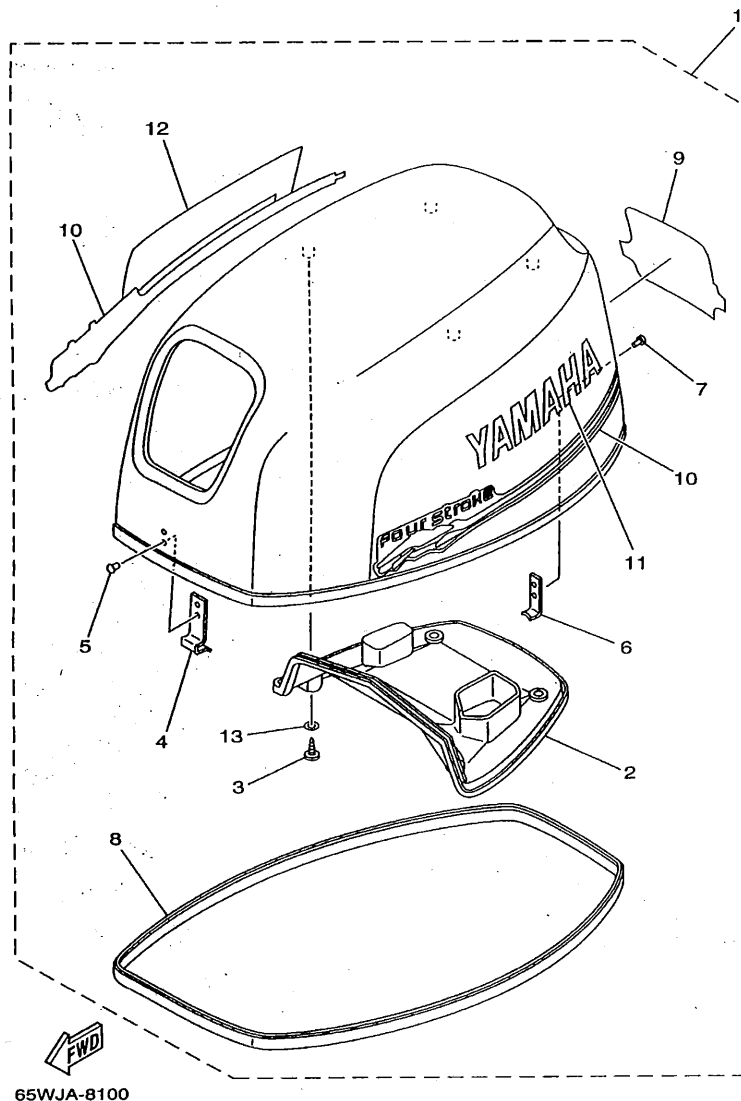
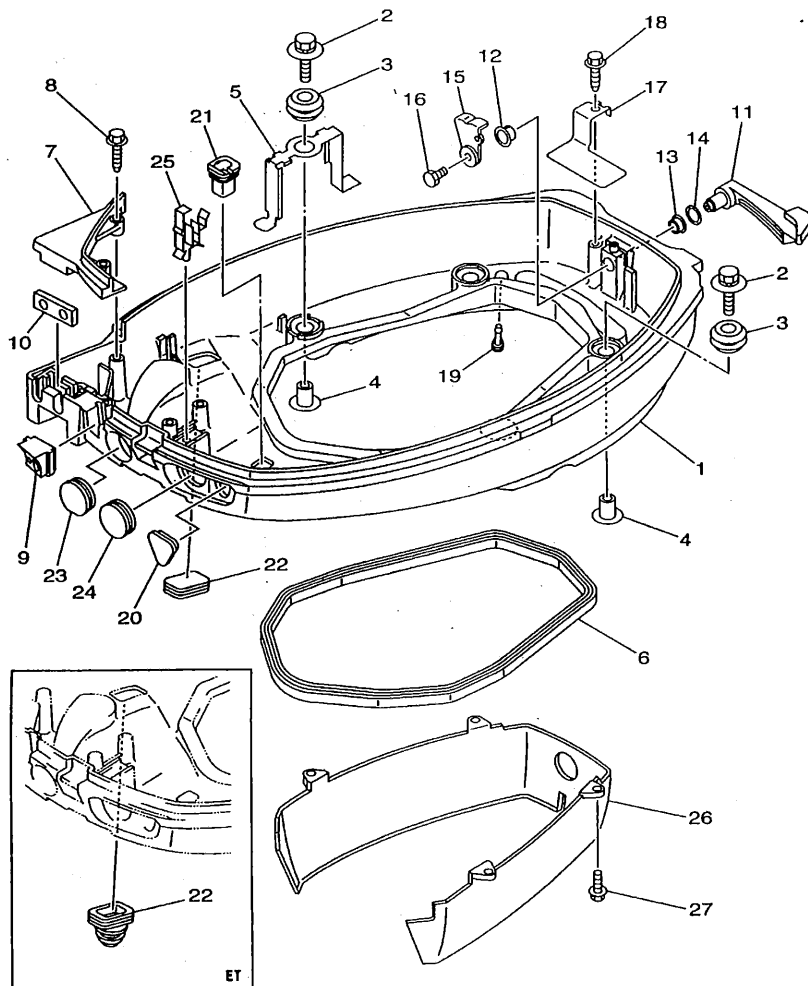


FIG. 10 TOP COWLING

CAPOT SUPERIEUR

REF. NO.	PART NO. NO. PIECES	DESCRIPTION DESCRIPTION	W	T W	T W	REMARKS REMARQUES
1	65W-42610-00-4D	TOP COWLING ASSY CAPOT (ENS.)	1	1	1	UR F25A
	65W-42610-30-4D	TOP COWLING ASSY CAPOT (ENS.)	1	1	1	UR F20A
2	65W-42613-00	.MOLDING, AIR DUCT .MANCHON A AIR	1	1	1	
3	97780-60520	.SCREW, TAPPING .VIS, TETE FRAISEE	4	4	4	
4	6E0-42651-02	.HOOK .CROCHET	1	1	1	
5	90266-04M04	.RIVET .RIVET	2	2	2	
6	6E7-42652-00	.HOOK .CROCHET	1	1	1	
7	90266-04M04	.RIVET .RIVET	2	2	2	
8	65W-42615-00	.SEAL .JOINT	1	1	1	
9	65W-42678-10	.GRAPHIC, REAR .ADHESIF, ARRIERE	1	1	1	UR F25A
	65W-42678-30	.GRAPHIC, REAR .ADHESIF, ARRIERE	1	1	1	UR F20A
10	65W-W0070-10	.GRAPHIC SET .JEU DIEMBLEMES	1	1	1	
11	65W-42681-10	.MARK, COWLING .ADHESIF, CAPOT	1	1	1	
12	65W-42682-10	.MARK, COWLING .ADHESIF, CAPOT	1	1	1	
13	90202-05M38	.WASHER, PLATE .RONDELLE, PLATE	4	4	4	



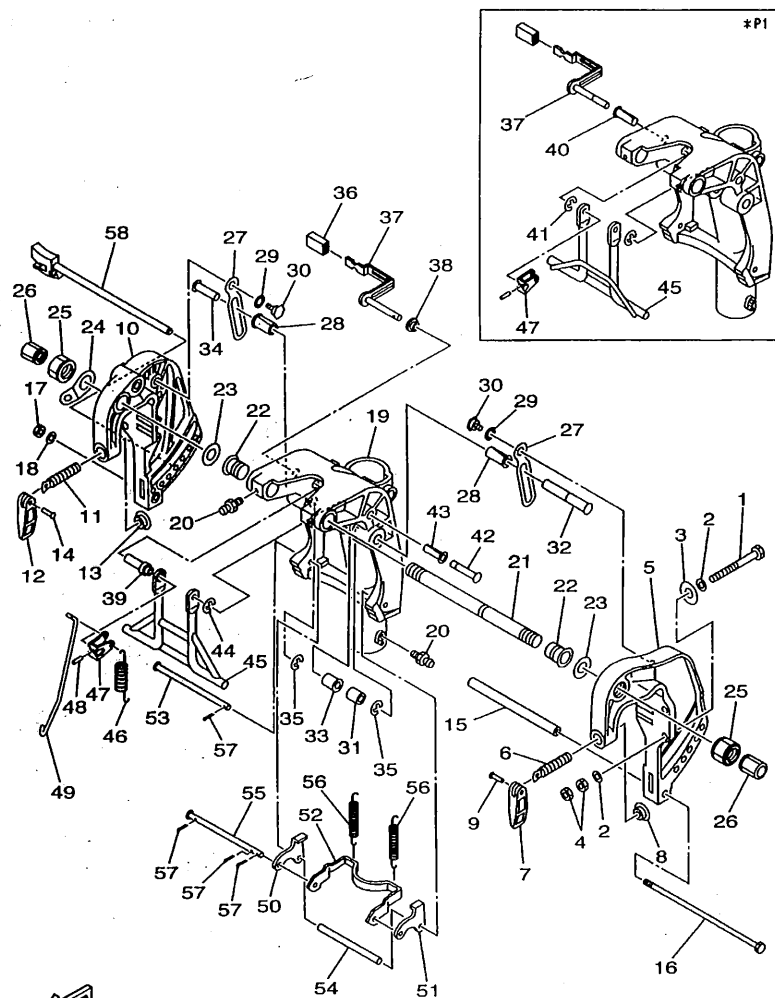
65WUS-8110

FIG. 11 BOTTOM COWLING

CAPOT INFERIEUR

REF. NO.	PART NO. NO. PIECES	DESCRIPTION DESCRIPTION	W	W	W	REMARKS REMARQUES
1	65W-42710-00-4D	BOTTOM COWLING ASSY ENS. EMBASE ( REF.NO. 8, 18, FIG.18, REF.NO. 14, 16, FIG.27, REF.NO. 3 )	1	1		UR
	65W-42710-10-4D	BOTTOM COWLING ASSY ENS. EMBASE ( REF.NO. 8, 18, FIG.18, REF.NO. 14, 16, FIG.27, REF.NO. 3 )			1	UR PTT
2	90119-06M08	BOLT, WITH WASHER BOULON, AVEC RONDELLE	4	4	4	
3	90480-09M12	GROMMET PASSE-FIL	4	4	4	
4	90387-06M69	COLLAR COLLERETTE	4	4	4	
5	65W-42743-00	BRACKET SUPPORT	2	2	2	
6	62Y-42716-00	RUBBER, SEAL 1 JOINT EN CAOUTCHOUC 1	1	1	1	
7	65W-42738-00-4D	PLATE, FITTING ETRIER	1	1	1	
8	90109-06M82	BOLT BOULON	2	2	2	
9	65W-42725-10	GROMMET PASSE-FIL		1		UR
	65W-42725-20	GROMMET PASSE-FIL	1		1	UR
10	62Y-42727-00	GROMMET PASSE-FIL	1		1	UR
	65W-42727-00	GROMMET PASSE-FIL		1		UR
11	65W-42815-00-4D	LEVER, CLAMP LEVIER, PRESSE	1	1	1	
12	90386-12M37	BUSH DOUILLE	1	1	1	
13	90386-12MA2	BUSH DOUILLE	1	1	1	
14	90206-12052	WASHER, WAVE RONDELLE, ONDULEE	1	1	1	
15	6L2-42816-00	LEVER, CLAMP LEVIER, PRESSE	1	1	1	
16	97095-06012	BOLT BOULON	1	1	1	
17	65W-42766-00	BRACKET SUPPORT	1	1	1	
18	90109-06M86	BOLT BOULON	1	1	1	
19	6H3-44391-01	NIPPLE, HOSE RACCORD D'ESSENCE	1	1	1	
20	65W-26326-00	GROMMET RONDELLE CAOUTCHOUC		1		UR





65WJA-8121

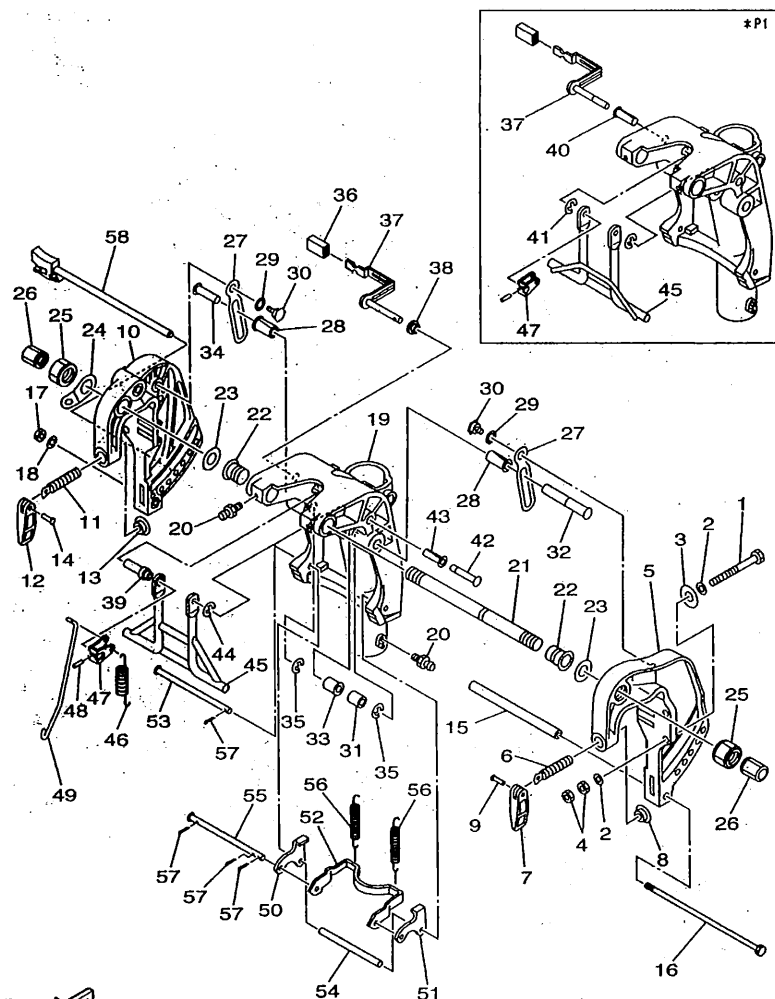
FIG. 12 BRACKET 1

SUPPORT 1

REF. NO.	PART NO. NO. PIECES	DESCRIPTION DESCRIPTION	W	W	W	REMARKS REMARQUES
1	90101-10M58	BOLT BOULON	4			
2	92995-10600	WASHER RONDELLE	8			
3	90201-12426	WASHER, PLATE RONDELLE, PLATE	4			
4	95380-10600	NUT ECROU	8			
5	65W-43111-01-4D	BRACKET, CLAMP PRESSE	1	1		*N2
	65W-43111-00-4D	BRACKET, CLAMP PRESSE	1	1		*P2
6	90149-14M12	SCREW VIS	1	1		
7	663-43118-01-4D	HANDLE, TRANSOM CLAMP POIGNEE DE VIS DE PRESSE	1	1		
8	648-43114-01	PAD, TRANSOM CLAMP RONDELLE D'APPUI	1	1		
9	90243-04007	PIN GOUPILLE	1	1		
10	65W-43112-01-4D	BRACKET, CLAMP PRESSE	1	1		*N2
	65W-43112-00-4D	BRACKET, CLAMP PRESSE	1	1		*P2
11	90149-14M12	SCREW VIS	1	1		
12	663-43118-01-4D	HANDLE, TRANSOM CLAMP POIGNEE DE VIS DE PRESSE	1	1		
13	648-43114-01	PAD, TRANSOM CLAMP RONDELLE D'APPUI	1	1		
14	90243-04007	PIN GOUPILLE	1	1		
15	90387-08M29	COLLAR COLLERETTE	1	1		
16	90101-08M76	BOLT BOULON	1	1		
17	95380-08600	NUT ECROU	1	1		
18	92990-08100	WASHER, SPRING RONDELLE, GROWER	1	1		
19	65W-43311-00-4D	BRACKET, SWIVEL SUPPORT, PIVOT	1	1		UR S
*N2: F20AEH S: 700101 ~ F20AE S: 100142 ~ L: 800101 ~ L: 500101 ~ F25AEH S: 050253 ~ F25AE S: 000153 ~ L: 350421 ~ L: 300389 ~						
*P2: F20AEH S: - F20AE S: ~ 100141 L: - L: - F25AEH S: ~ 050252 F25AE S: ~ 000152 L: ~ 350420 L: ~ 300388						

C6



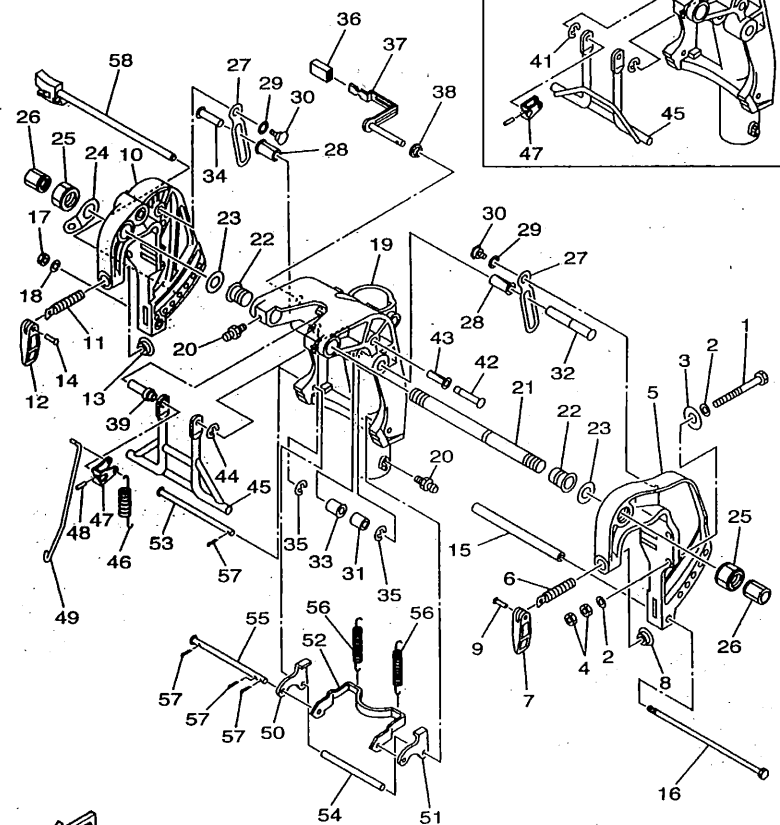


65WJA-8121

FIG. 12 BRACKET 1

SUPPORT 1

REF. NO.	PART NO. NO. PIECES	DESCRIPTION DESCRIPTION	u	W	W	REMARKS REMARQUES
19	65W-43311-10-4D	BRACKET, SWIVEL SUPPORT, PIVOT	1	1		UR L
20	93700-06M03	NIPPLE, GREASE GRAISSEUR		1		
	93700-06M03	NIPPLE, GREASE GRAISSEUR	3			
21	63D-43131-00	BOLT, CLAMP BRACKET BOULON, PRESSE	1	1		
22	90386-22M15	BUSH DOUILLE	2	2		
23	90201-22M03	WASHER, PLATE RONDELLE, PLATE	2	2		
24	6J8-43113-01	PLATE, CLAMP BRACKET PLAQUETTE, PRESSE	1	1		
25	63V-43145-00	CAP, CLAMP BRACKET CAPUCHON, PRESSE	2	2		
26	6G5-43145-00	CAP, CLAMP BRACKET CAPUCHON, PRESSE	2	2		
27	65W-43627-01	STOPPER PLAQUETTE	2	2		
28	90386-12M98	BUSH DOUILLE	2	2		
29	90206-14M23	WASHER, WAVE RONDELLE, ONDULEE	2	2		
30	90109-08M87	BOLT BOULON	2	2		
31	90387-12M04	COLLAR COLLERETTE	1	1		
32	90249-12M39	PIN GOUPILLE	1	1		
33	90386-12MA0	BUSH DOUILLE	1	1		
34	90249-12M34	PIN GOUPILLE	1	1		
35	93430-10M00	CIRCLIP CIRCLIP, TYPE S	2	2		
36	663-43318-00	COVER CAPUCHON	1	1		
37	65W-43630-10	TILT LEVER ASSY LEVIER D'INCLINAISON	1	1		*N1
	65W-43630-00	TILT LEVER ASSY LEVIER D'INCLINAISON	1	1		*P1
*N1: F20AEH S: 700121 ~ F20AE S: 100362 ~ L: 800126 ~       L: 500101 ~ F25AEH S: 050406 ~ F25AE S: 000178 ~ L: 350695 ~       L: 300672 ~						
*P1: F20AEH S: ~ 700120 F20AE S: ~ 100361 L: ~ 800125       L: ~ F25AEH S: ~ 050405 F25AE S: ~ 000177 L: ~ 350694       L: ~ 300671						



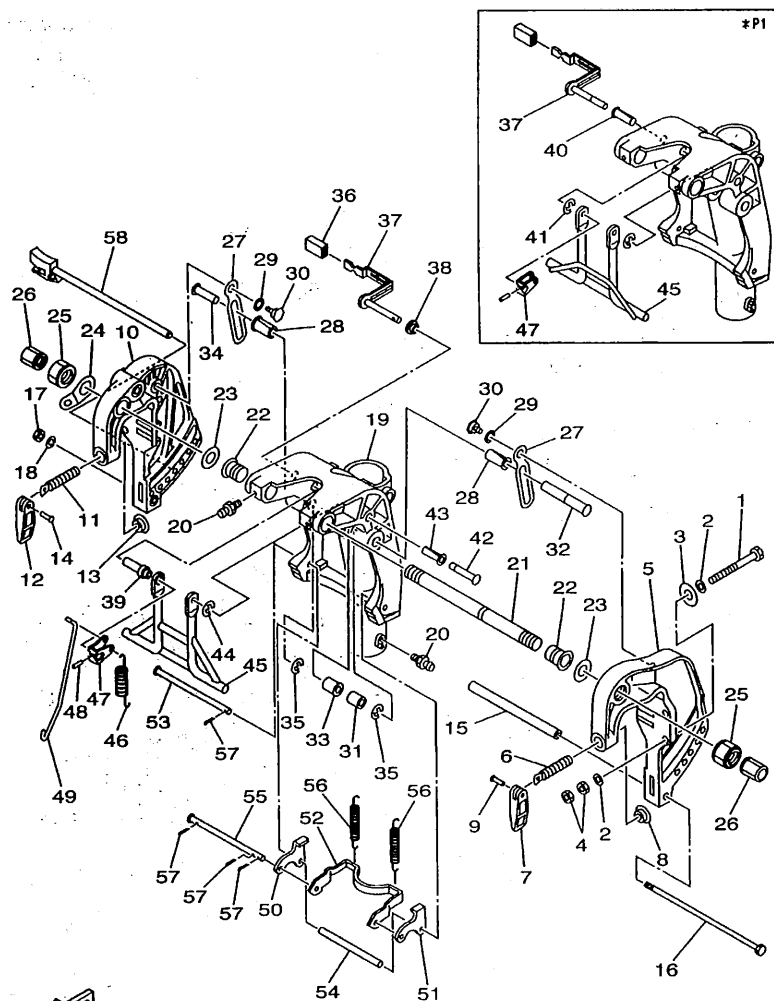
65WJA-8121

FIG. 12 BRACKET 1

SUPPORT 1

REF. NO.	PART NO. NO. PIECES	DESCRIPTION DESCRIPTION	W	W	W	REMARKS REMARQUES
38	90386-07MA2	BUSH DOUILLE	1	1		*N1
39	90387-07M05	COLLER COLLERETTE	1	1		*N1
40	90386-10M99	BUSH DOUILLE	1	1		*P1
41	99080-08600	CIRCLIP CIRCLIP	1	1		*P1
42	90249-10M31	PIN GOUILLE	1	1		
43	90386-10M99	BUSH DOUILLE	1	1		
44	99080-08600	CIRCLIP CIRCLIP	1	1		
45	66T-43350-01	RECEIVER ASSY RECEIVER ASSY	1	1		*N1
	66T-43350-00	RECEIVER ASSY RECEIVER ASSY	1	1		*N3
	65W-43350-00	RECEIVER ASSY RECEIVER ASSY	1	1		*P2
46	90506-20M37	SPRING, TENSION RESSORT, TENSION	1	1		*N2
-----						
*N1: F20AEH S: 700121 ~ F20AE S: 100362 ~ L: 800126 ~ L: 500101 ~ F25AEH S: 050406 ~ F25AE S: 000178 ~ L: 350695 ~ L: 300672 ~						
-----						
*N2: F20AEH S: 700101 ~ F20AE S: 100142 ~ L: 800101 ~ L: 500101 ~ F25AEH S: 050253 ~ F25AE S: 000153 ~ L: 350421 ~ L: 300389 ~						
-----						
*N3: F20AEH S: 700101 ~ 700120 L: 800101 ~ 800125 F20AE S: 100142 ~ 100361 L: 500101 ~ F25AEH S: 050253 ~ 050405 L: 350421 ~ 350694 F25AE S: 000153 ~ 000177 L: 300389 ~ 300671						
-----						
*P1: F20AEH S: ~ 700120 F20AE S: ~ 100361 L: ~ 800125 L: ~ F25AEH S: ~ 050405 F25AE S: ~ 000177 L: ~ 350694 L: ~ 300671						
-----						
*P2: F20AEH S: ~ F20AE S: ~ 100141 L: ~ L: ~ F25AEH S: ~ 050252 F25AE S: ~ 000152 L: ~ 350420 L: ~ 300388						

D1

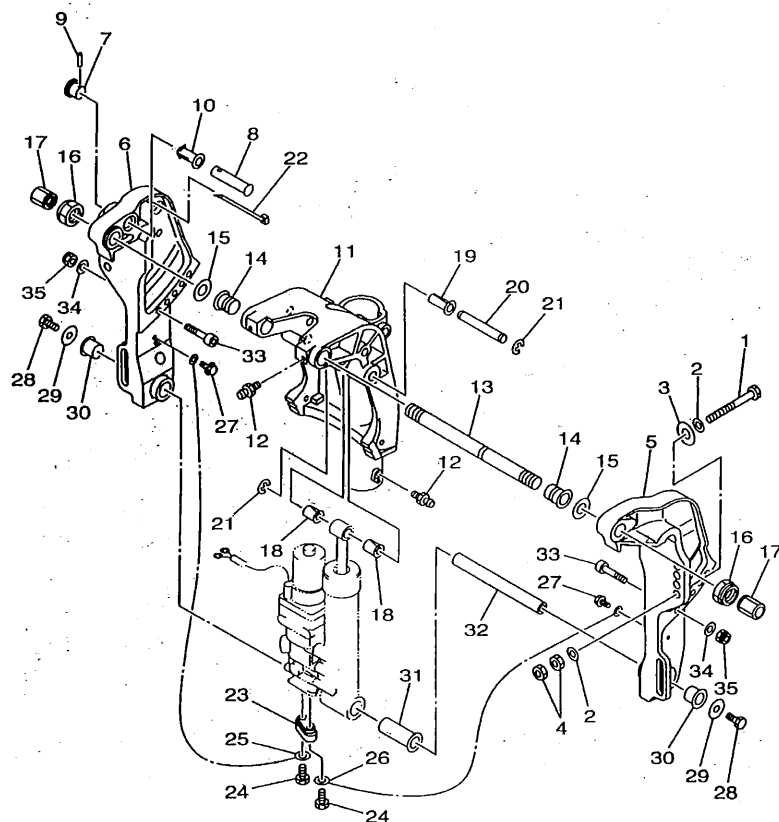


65WJA-8121

FIG. 12 BRACKET 1

SUPPORT 1

REF. NO.	PART NO. NO. PIECES	DESCRIPTION DESCRIPTION	W	U	W	U	REMARKS REMARQUES
46	90506-20M36	SPRING, TENSION RESSORT, TENSION	1	1			*P2
47	66T-43631-10	LEVER, TILT LEVIER, INCLINAISON	1	1			*N1
	66T-43631-00	LEVER, TILT LEVIER, INCLINAISON	1	1			*N3
	65W-43631-00	LEVER, TILT LEVIER, INCLINAISON	1	1			*P2
48	91690-30016	PIN, SPRING GOUPILLE, ELASTIQUE	1	1			
49	65W-43616-00	ROD, TILT LOCK TIGE	1	1			
50	65W-43614-00	PLATE, TILT LOCK ETRIER, VERROUILLAGE MARCHE AR	1	1			
51	65W-43615-00	PLATE, TILT LOCK ETRIER, VERROUILLAGE MARCHE AR	1	1			
52	65W-43613-00	ARM, TILT LOCK GUIDE	1	1			
53	90249-07M32	PIN GOUPILLE	1	1			
54	90387-07M29	COLLAR COLLERETTE	1	1			
55	90249-07M33	PIN GOUPILLE	1	1			
56	90506-30M00	SPRING, TENSION RESSORT, TENSION	2	2			
57	91490-20015	PIN, COTTER GOUPILLE, FENDUE	4	4			
58	65W-43160-00	TILT ROD ASSY BROCHE D'INCLINAISON (ENS.)	1	1			
*N1: F20AEH S: 700121 ~ F20AE S: 100362 ~							
L: 800126 ~ L: 500101 ~							
F25AEH S: 050406 ~ F25AE S: 000178 ~							
L: 350695 ~ L: 300672 ~							
*N3: F20AEH S: 700101 ~ 700120							
L: 800101 ~ 800125							
F20AE S: 100142 ~ 100361							
L: 500101 ~							
F25AEH S: 050253 ~ 050405							
L: 350421 ~ 350694							
F25AE S: 000153 ~ 000177							
L: 300389 ~ 300671							
*P2: F20AEH S: - F20AE S: ~ 100141							
L: - L: -							
F25AEH S: ~ 050252 F25AE S: ~ 000152							
L: ~ 350420 L: ~ 300388							



65WUS-8131

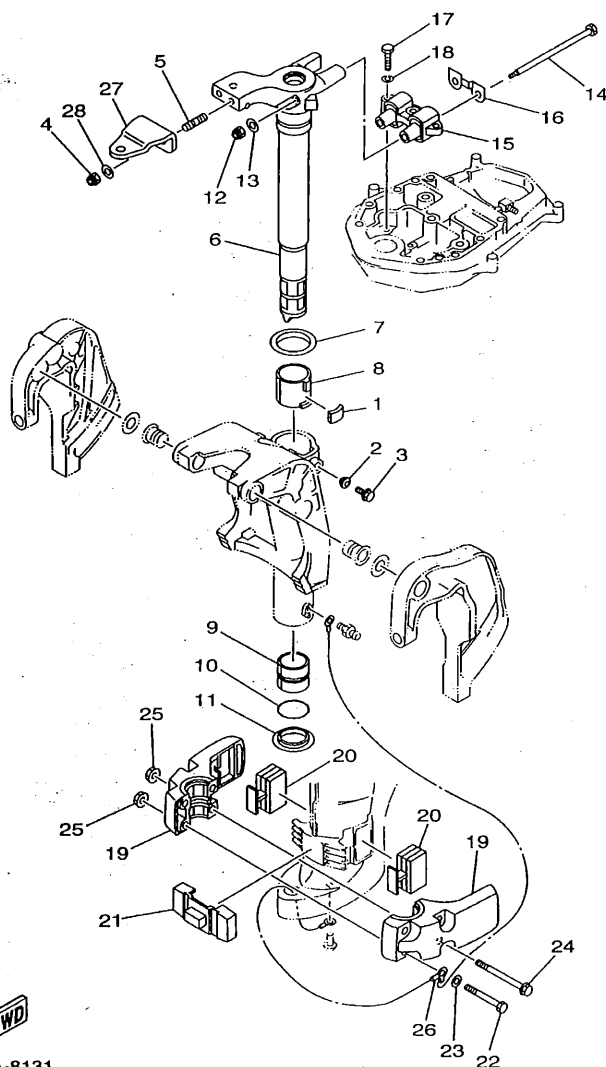
FIG. 13 BRACKET 2

SUPPORT 2

REF. NO.	PART NO. NO. PIECES	DESCRIPTION DESCRIPTION	W	U	U	REMARKS REMARQUES
1	90101-12M65	BOLT BOULON			4	
2	92995-12200	WASHER RONDELLE			8	
3	90201-12426	WASHER, PLATE RONDELLE, PLATE			4	
4	95380-12600	NUT ECROU			8	
5	65W-43111-10-4D	BRACKET, CLAMP PRESSE			1	
6	65W-43112-10-4D	BRACKET, CLAMP PRESSE			1	
7	65W-43192-00	KNOB, STOPPER BOUTON, BUTEE DE RELEVAGE			1	
8	65W-43191-00	SHAFT, STOPPER AXE, BUTEE			1	
9	91690-30018	PIN, SPRING GOUPILLE, ELASTIQUE			1	
10	90386-14MA1	BUSH DOUILLE			1	
11	65W-43311-10-4D	BRACKET, SWIVEL SUPPORT, PIVOT			1	
12	93700-06M03	NIPPLE, GREASE GRAISSEUR			3	
13	363D-43131-00	BOLT, CLAMP BRACKET BOULON, PRESSE			1	
14	90386-22M15	BUSH DOUILLE			2	
15	90201-22M03	WASHER, PLATE RONDELLE, PLATE			2	
16	90185-22M11	NUT, SELF-LOCKING ECROU, AUTO-BLOCANT			2	
17	6G5-43145-00	CAP, CLAMP BRACKET CAPUCHON, PRESSE			2	
18	90386-12MA0	BUSH DOUILLE			2	
19	90386-12M98	BUSH DOUILLE			1	
20	90249-12M38	PIN GOUPILLE			1	
21	93430-10M00	CIRCLIP CIRCLIP, TYPE S			2	
22	90465-13M11	CLAMP BRIDE			2	
23	65W-45251-00	ANODE			1	
24	97085-06025	BOLT BOULON			2	
25	6H1-82148-00	WIRE, LEAD 4 FIL 4			1	
26	6U0-82127-00	WIRE, LEAD 2 FIL 2			1	
27	97595-06514	BOLT, WITH WASHER VIS HEXAGONAL			2	

D3





65WJA-8131

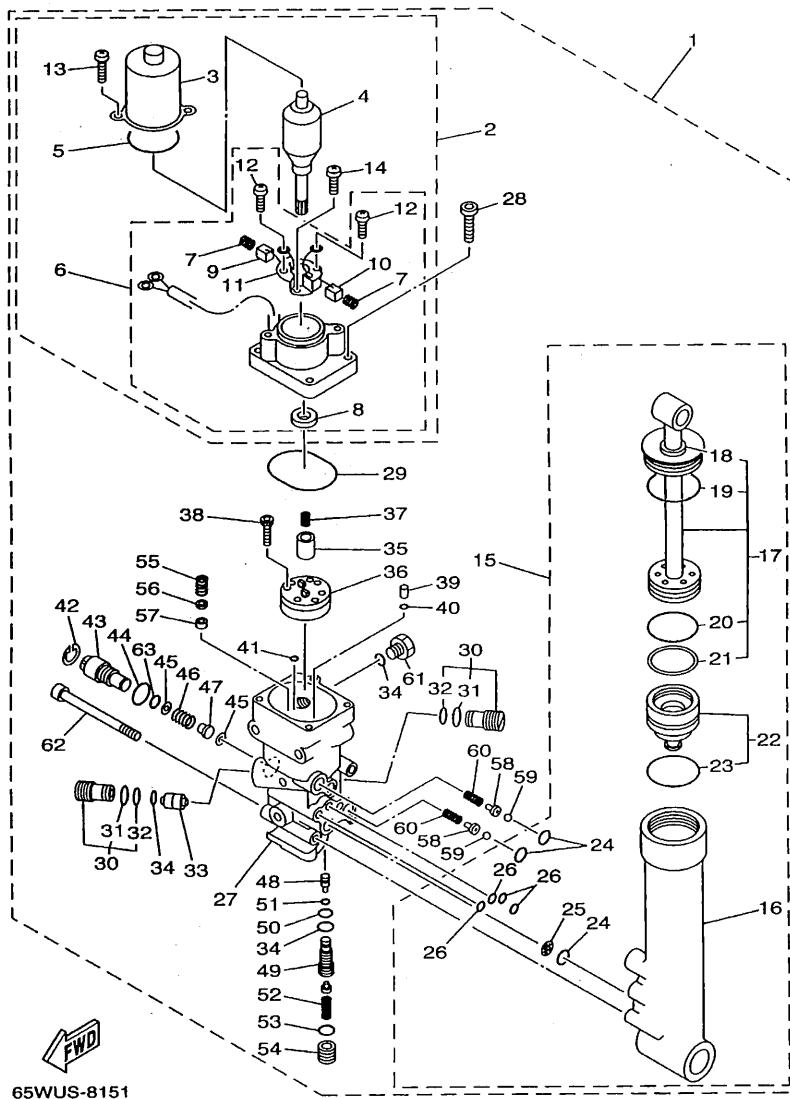
FIG. 14 BRACKET 3

SUPPORT 3

REF. NO.	PART NO. NO. PIECES	DESCRIPTION DESCRIPTION	W	U	L	REMARKS REMARQUES
1	648-42528-00	PLATE, FRICTION PLAQUE, FRICTION	1	1	1	
2	65W-43373-00	SEAL, DAMPER JOINT	1	1	1	
3	90105-08M76	BOLT, WASHER BASED BOULON, AVEC RONDELLE	1	1	1	
4	90185-10051	NUT, SELF-LOCKING ECROU, AUTO-BLOCANT	2	2	2	
5	90116-10M28	BOLT, STUD GOUJON	2	2	2	
6	65W-42511-00-4D	BRACKET, STEERING CADRE, DIRECTION	1	1		UR S
	65W-42511-10-4D	BRACKET, STEERING CADRE, DIRECTION	1	1	1	UR L
7	90209-52M00	WASHER RONDELLE	1	1	1	
8	90386-52M02	BUSH DOUILLE	1	1	1	
9	90386-44M03	BUSH DOUILLE	1	1	1	
10	93210-43MJ0	O-RING JOINT TORIQUE	1	1	1	
11	90386-44M99	BUSH DOUILLE	1	1	1	
12	90185-08045	NUT, SELF-LOCKING ECROU, AUTO-BLOCANT	2	2	2	
13	92995-08200	WASHER RONDELLE	2	2	2	
14	90101-08M86	BOLT BOULON	2	2	2	
15	65W-44514-00-4D	MOUNT DAMPER, UPPER SIDE SILENT-BLOC, SUPERIEUR LATERAL	1	1	1	
16	63D-44526-00	PLATE PLAQUE	1	1	1	
17	97075-08030	BOLT BOULON	3	3	3	
18	92995-08100	WASHER RONDELLE	3	3	3	
19	65W-44551-10-4D	HOUSING, LOWER MOUNT RUBBER BOITIER, SILENT-BLOC INFÉRIEUR	2	2	2	
20	65W-44555-00	MOUNT DAMPER, LOWER SIDE SILENT-BLOC, INFÉRIEUR LATERAL	2	2	2	
21	65W-44575-00	DAMPER, LOWER MOUNT RUBBER SILENT-BLOC, INFÉRIEUR	1	1		UR S
	65W-44575-10	DAMPER, LOWER MOUNT RUBBER SILENT-BLOC, INFÉRIEUR	1	1	1	UR L
22	97075-10070	BOLT BOULON	2	2	2	
23	92995-10600	WASHER RONDELLE	2	2	2	
24	90119-10M04	BOLT, WITH WASHER BOULON, AVEC RONDELLE	2	2	2	
25	90179-10M33	NUT ECROU	4	4	4	

D5



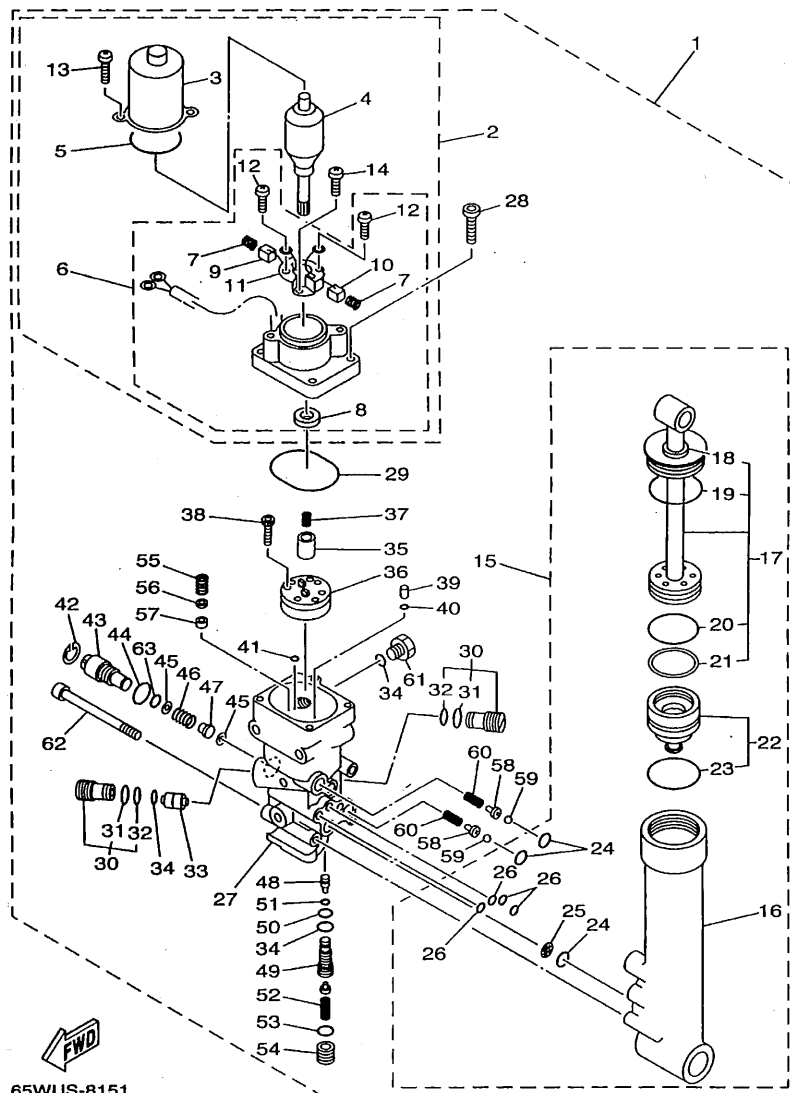


65WUS-8151

FIG. 15 POWER TRIM & TILT ASSY PUISSANCE PARER ET INCLINER

REF. NO.	PART NO. NO. PIECES	DESCRIPTION DESCRIPTION	u	u	u	REMARKS REMARQUES
1	65W-43800-00-4D	POWER TRIM & TILT ASSY PUISSANCE PARER ET INCLINER (E			1	
2	65W-43880-00	..MOTOR ASSY ..MOTEUR (ENS.)			1	
3	65W-43804-00	..STATOR ASSY ..STATOR (ENS.)			1	
4	65W-43805-00	..ARMATURE ASSY ..INDUIT (ENS.)			1	
5	65W-43869-00	..O-RING ..JOINT TORIQUE			1	
6	65W-43881-00	..FRAME, END ..BATI			1	
7	65W-4386K-00	..SPRING, BRUSH ..RESSORT, BALAI			2	
8	65W-43882-00	..OIL SEAL ..JOINT SPI			1	
9	65W-43892-00	..BRUSH 2 ..BALAI 2			1	
10	65W-43891-00	..BRUSH 1 ..BALAI 1			1	
11	65W-4380F-00	..PLATE, BRUSH HOLDER ..PLAQUE			1	
12	65W-43879-00	..SCREW, WITH WASHER ..VIS, AVEC RONDELLE			2	
13	65W-43887-00	..BOLT, THROUGH ..BOULON			2	
14	65W-4388E-00	..BOLT ..BOULON			1	
15	65W-43840-00	..POWER TILT ASSY ..PUISSANCE INCLINER (ENS.)			1	
16	65W-4380K-00	..CYLINDER, TILT SUB ASSY ..CYLINDRE			1	
17	65W-43810-00	..PISTON SUB ASSY ..PISTON AUXILIAIRE (ENS.)			1	
18	65W-43812-00	..SEAL, DUST ..JOINT			1	
19	65W-43865-00	..O-RING ..JOINT TORIQUE			1	
20	6H1-43861-10	..O-RING ..JOINT TORIQUE			1	
21	65W-43871-00	..RING, BACK UP ..SEGMENT			1	
22	65W-4381B-00	..FREE PISTON SUB ASSY ..PISTON AUXILIAIRE (ENS.)			1	
23	6H1-43861-10	..O-RING ..JOINT TORIQUE			1	
24	93210-11368	..O-RING ..JOINT TORIQUE			3	
25	6H1-43816-00	..FILTER 1 ..FILTRE 1			1	
26	93210-064A5	..O-RING ..JOINT TORIQUE			4	
27	65W-4380L-00	..HOUSING, TRIM & TILT SUB ASSY ..CARTER			1	





65WUS-8151

FIG. 15 POWER TRIM & TILT ASSY PUISSANCE PARER ET INCLINER

REF. NO.	PART NO. NO. PIECES	DESCRIPTION DESCRIPTION	u	u	u	REMARKS REMARQUES
28	65W-43888-00	.BOLT, SOCKET .BOULON			4	
29	93210-50768	.O-RING .JOINT TORIQUE			1	
30	6T4-43802-03	.VALVE SUB ASSY .CLAPET AUXILIAIRE (ENS.)			2	
31	6H1-43866-00	.O-RING .JOINT TORIQUE			1	
32	6H1-43867-00	.O-RING .JOINT TORIQUE			1	
33	62X-43841-00	.PISTON, SHUTTLE .PISTON			1	
34	93210-09165	.O-RING .JOINT TORIQUE			3	
35	65W-43831-00	.CONNECTOR, SHAFT .RACCORD			1	
36	65W-43830-00	.GEAR PUMP ASSY .POMPE A PIGNON (ENS.)			1	
37	6T4-43853-00	.SPRING, MAIN VALVE .RESSORT			1	
38	91318-04025	.BOLT .BOULON			4	
39	65W-43817-00	.FILTER 2 .FILTRE 2			2	
40	65W-43861-00	.O-RING .JOINT TORIQUE			2	
41	65W-43862-00	.O-RING .JOINT TORIQUE			2	
42	6H1-43875-00	.RING, SNAP .RESSORT			1	
43	6H1-43845-00	.SCREW, MANUAL RELEASE .VIS			1	
44	93210-18397	.O-RING .JOINT TORIQUE			1	
45	6H1-43847-00	.SEAT, MANUAL VALVE .SIEGE			2	
46	65W-43854-00	.SPRING, MANUAL RELEASE .RESSORT			1	
47	65W-4382A-00	.ADAPTOR 1 .ADAPTEUR 1			1	
48	65W-43844-00	.PIN, VALVE SUPPORT .GOUPILLE			1	
49	65W-43851-00	.SEAT, RELIEF VALVE .SIEGE			1	
50	93210-08006	.O-RING .JOINT TORIQUE			1	
51	93210-03478	.O-RING .JOINT TORIQUE			1	
52	65W-43855-00	.SPRING, UP RELIEF .RESSORT			1	
53	93210-11073	.O-RING .JOINT TORIQUE			1	
54	65W-43843-00	.SCREW, VALVE LOCK .VIS			1	



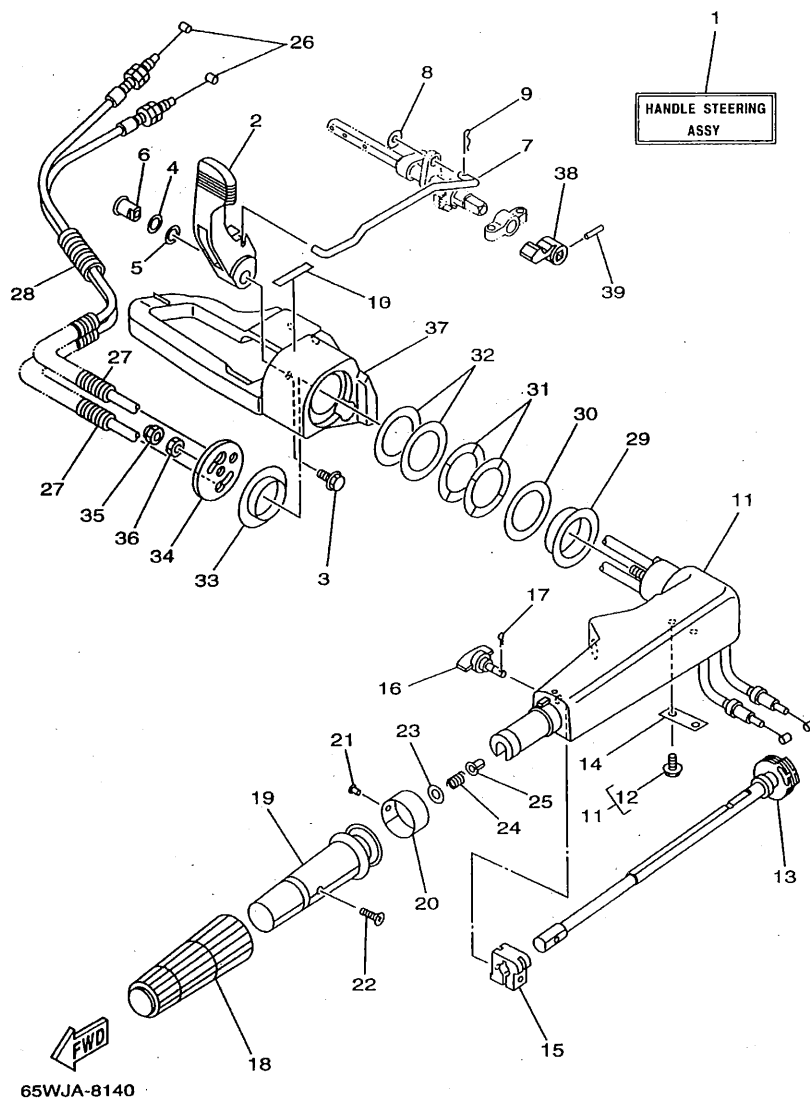


FIG. 16 STEERING 1

DIRECTION 1

REF. NO.	PART NO. NO. PIECES	DESCRIPTION DESCRIPTION	W	H	U	REMARKS REMARQUES
1	65W-W0084-01-4D	HANDLE STEERING ASSY BARRE FRANCHE (ENS.) ( FIG.11, REF.NO. 20, 24, REF.NO. 2-7, 10-37, FIG.27, REF.NO. 4-6 )		1		
2	65W-44111-00	HANDLE, GEAR SHIFT POIGNEE, LEVIER D'EMBRAYAGE		1		
3	95895-06016	BOLT, FLANGE BOULON, A COLLERETTE		1		
4	90206-12M00	WASHER, WAVE RONDELLE, ONDULEE		1		
5	90201-12M07	WASHER, PLATE RONDELLE, PLATE		1		
6	65W-42123-00	BOLT, HANDLE JOINT BOULON		1		
7	65W-44124-00	LINK, SHIFT ROD BIELLETTTE		1		
8	92990-06200	WASHER, PLAIN RONDELLE, PLATE		1		
9	90468-18008	CLIP JONC		1		
10	6E0-44191-11	INDICATOR, SHIFT ETIQUETTE, EMBRAYAGE		1		
11	65W-42101-01-4D	HANDLE, STEERING POIGNEE		1		*N1
	65W-42101-00-4D	HANDLE, STEERING POIGNEE		1		*P1
12	90109-06M86	BOLT BOULON		2		
13	65W-42138-00	LEVER, THROTTLE LEVIER, ACCELERATEUR		1		
14	65W-42159-00	STAY SUPPORT		1		
15	6G1-42126-00	FRICTION, STEERING HANDLE GRIP CUVETTE, POIGNEE DE DIRECTION		1		
16	65W-42125-00	BOLT, FRICTION ADJUSTING BOULON		1		
17	91490-16010	PIN, COTTER GOUPILLE, FENDUE		1		
18	66M-42177-00	RUBBER, HANDLE CAOUTCHOUC, POIGNEE		1		*N2
*N1: F20AEH S: 700101 ~ F25AEH S: 050332 ~ L: 800101 ~ L: 350506 ~						
*N2: F20AEH S: 700101 ~ F25AEH S: 050208 ~ L: 800101 ~ L: 350373 ~						
*P1: F20AEH S: ~ F25AEH S: ~ 050331 L: ~ L: ~ 350505						
*N1, *N2 = COMPONENT OF HANDLE STEERING ASSY *N1, *N2 = CONTENU DE BARRE FRANCHE (ENS.)						

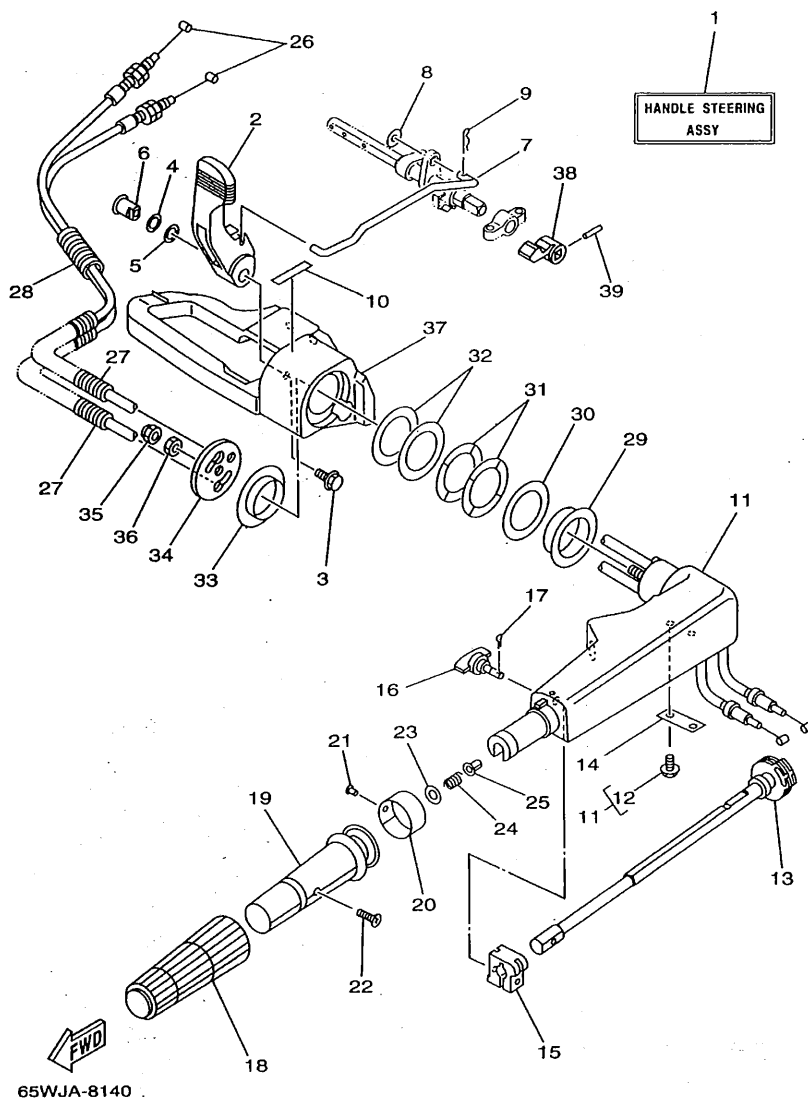


FIG. 16 STEERING 1

DIRECTION 1

REF. NO.	PART NO. NO. PIECES	DESCRIPTION DESCRIPTION	W	W	W	REMARKS REMARQUES
18	6F6-42177-A0	RUBBER, HANDLE CAOUTCHOUC, POIGNEE		1		*P2
19	66M-42119-00	GRIP, STEERING HANDLE POIGNEE, BARRE FRANCHE		1		*N2
	664-42119-00	GRIP, STEERING HANDLE POIGNEE, BARRE FRANCHE		1		*P2
20	6J0-42137-00	INDICATOR, THROTTLE INDICATEUR, ACCELERATION		1		
21	90269-02M09	RIVET RIVET		1		
22	90149-05M13	SCREW VIS		1		
23	92903-10600	WASHER, PLATE RONDELLE, PLATE		1		
24	90501-23215	SPRING, COMPRESSION RESSORT, COMPRESSION		1		
25	90386-08032	BUSH DOUILLE		1		
26	65W-26311-00	CABLE, THROTTLE 1 CABLE, 1, ACCELERATEUR		2		
27	90446-10M86	HOSE DURITE		2		
28	90446-14M88	HOSE DURITE		1		
29	90386-40MA0	BUSH DOUILLE		1		
30	90201-43M00	WASHER, PLATE RONDELLE, PLATE		1		
31	90206-43M22	WASHER, WAVE RONDELLE, ONDULEE		2		
32	90202-43M57	WASHER, PLATE RONDELLE, PLATE		2		
33	90386-40M99	BUSH DOUILLE		1		
34	65W-42131-01	COVER, HANDLE STEERING COUVERCLE		1		*N1
	65W-42131-00	COVER, HANDLE STEERING COUVERCLE		1		*P1
*N1: F20AEH S: 700101 ~ F25AEH S: 050332 ~ L: 800101 ~ L: 350506 ~						
*N2: F20AEH S: 700101 ~ F25AEH S: 050208 ~ L: 800101 ~ L: 350373 ~						
*P1: F20AEH S: - F25AEH S: ~ 050331 L: - L: ~ 350505						
*P2: F20AEH S: - F25AEH S: ~ 050207 L: - L: ~ 350372						
*N1, *N2 = COMPONENT OF HANDLE STEERING ASSY *N1, *N2 = CONTENU DE BARRE FRANCHE (ENS.)						

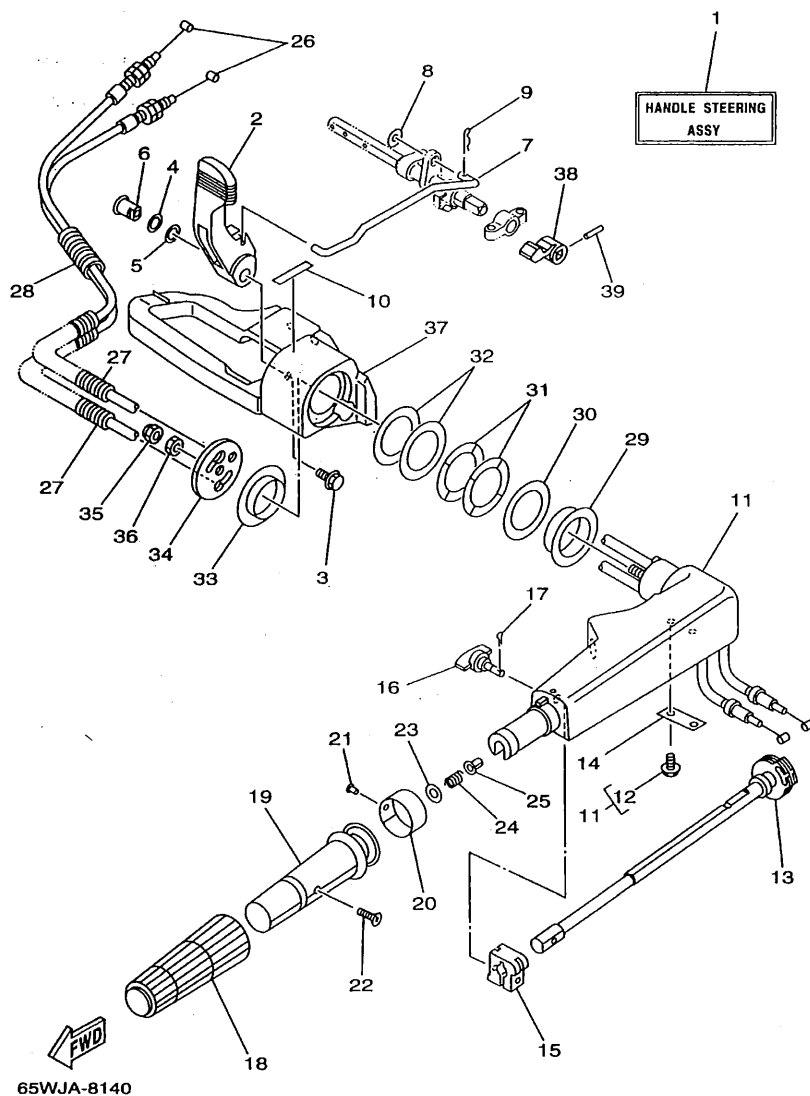


FIG. 16 STEERING 1

### DIRECTION 1

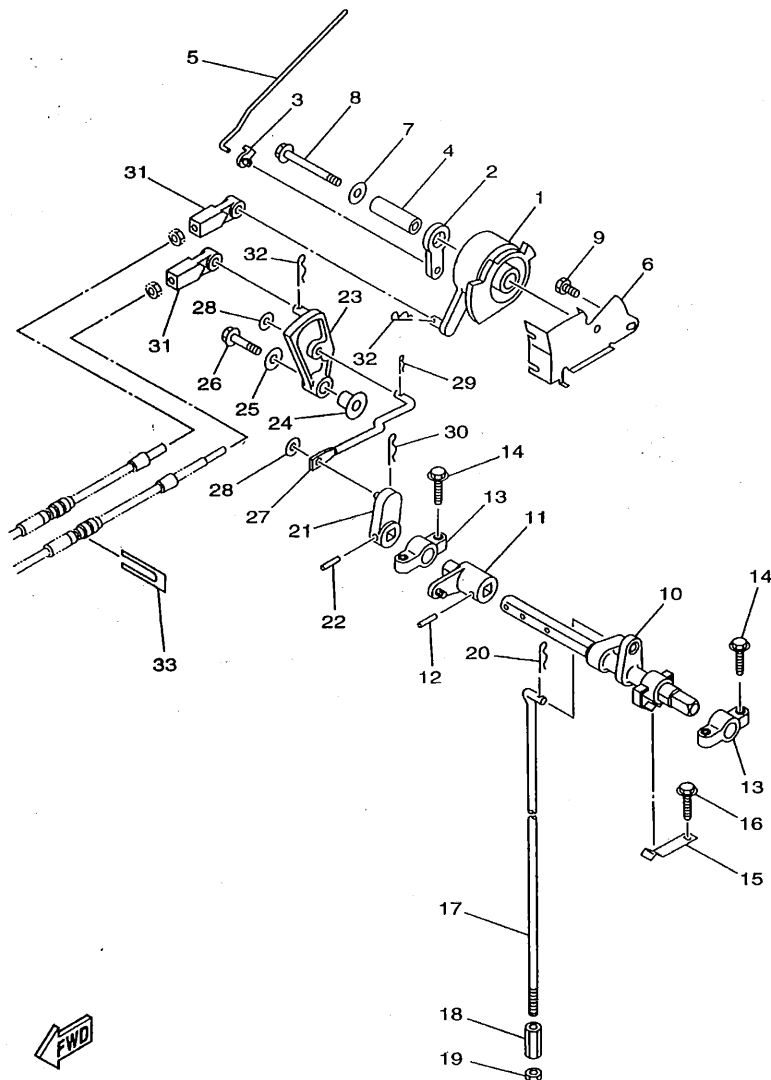
[illegible]



# E6

## DIRECTION 2

[illegible]



65WJA-8160

FIG. 18 CONTROL

COMMANDE

REF. NO.	PART NO. NO. PIECES	DESCRIPTION DESCRIPTION	W	U	L	REMARKS REMARQUES
1	65W-41638-00	PULLEY POULIE	1	1	1	
2	65W-41283-00	LEVER, FREE ACCEL. LEVIER	1	1	1	
3	661-41262-02	JOINT, CHOKE LEVER RACCORD, LEVIER DE STARTER	1	1	1	
4	90387-06M08	COLLAR COLLERETTE	1	1	1	
5	65W-41211-00	LINK, ACCEL. BIELLE, ACCELERATION	1	1	1	
6	65W-14497-00	STAY, THROTTLE WIRE SUPPORT DE BOISSEAU	1	1	1	
7	90201-06M31	WASHER, PLATE RONDELLE, PLATE	1	1	1	
8	97595-06555	BOLT, WITH WASHER VIS HEXAGONAL	1	1	1	
9	97095-06010	BOLT BOULON	1	1	1	
10	65W-44121-00	LEVER, SHIFT ROD LEVIER, TIGE D'INVERSION	1	1	1	
11	65W-44122-00	BUSHING, SHIFT ROD LEVER DOUILLE, LEVIER D'EMBRAYAGE	1	1	1	
12	91690-30320	PIN, SPRING GOUPILLE, ELASTIQUE	1	1	1	
13	6F5-41662-00	BRACKET SUPPORT	2	2	2	
14	90109-06M81	BOLT BOULON	4	4	4	
15	65W-44116-00	SPRING RESSORT	1	1	1	
16	90109-06M86	BOLT BOULON	1	1	1	
17	65W-44143-00	ROD, SHIFT TIGE D'EMBRAYAGE	1	1		UR S
	65W-44143-10	ROD, SHIFT TIGE D'EMBRAYAGE	1	1	1	UR L
18	90170-06015	NUT ECROU	1	1	1	
19	95380-06700	NUT ECROU	1	1	1	
20	90468-18008	CLIP JONC	1	1	1	
21	65W-44142-00	SEAL JOINT	1		1	
22	91690-30320	PIN, SPRING GOUPILLE, ELASTIQUE	1		1	
23	65W-44125-00	LEVER, SHIFT ROD LEVIER, TIGE D'INVERSION	1		1	
24	90387-06M29	COLLAR COLLERETTE	1		1	
25	90201-06M31	WASHER, PLATE RONDELLE, PLATE	1		1	
26	97595-06525	BOLT, WITH WASHER VIS HEXAGONAL	1		1	







**F2**



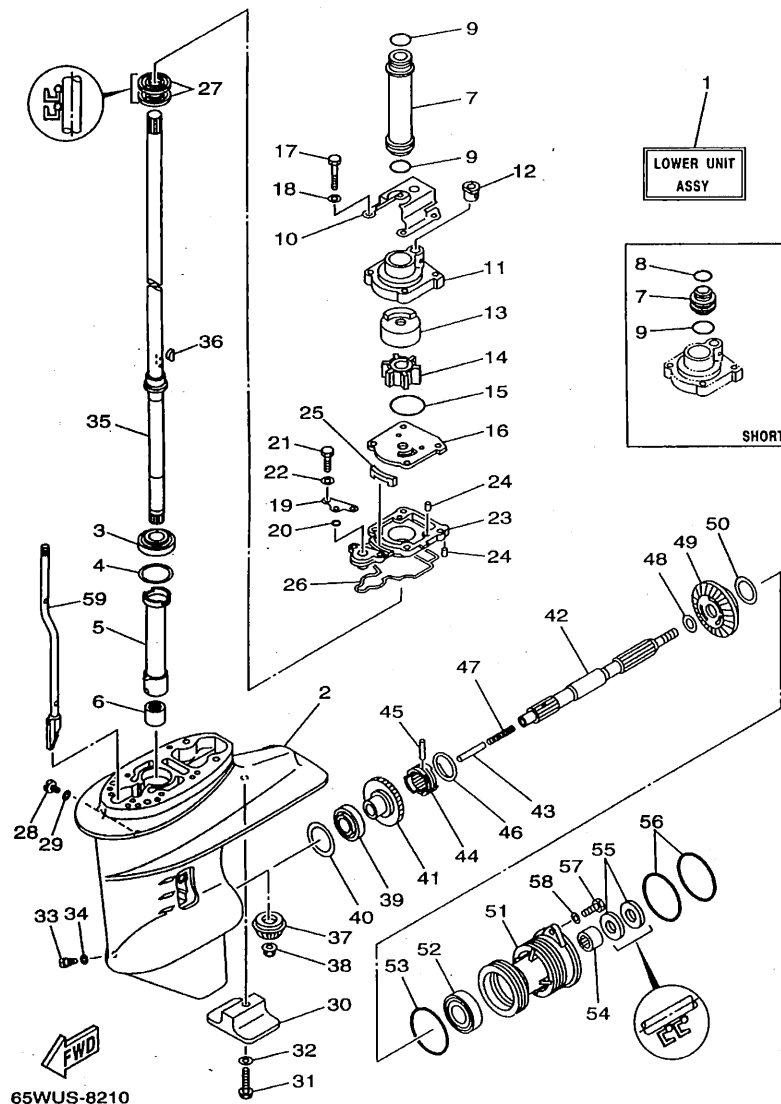


FIG. 21 LOWER CASING. DRIVE 1

BOITIER D'HELICE, TRANSMISSION 1

REF. NO.	PART NO. NO. PIECES	DESCRIPTION DESCRIPTION	W	W	W	REMARKS REMARQUES
1	65W-45300-00-4D	LOWER UNIT ASSY UNITE INFERIEURE (ENS.) ( REF.NO. 2-6, 11-59 )	1	1		UR S
	65W-45300-10-4D	LOWER UNIT ASSY UNITE INFERIEURE (ENS.) ( REF.NO. 2-6, 11-59 )	1	1	1	UR L
2	61N-45311-02-4D	CASING, LOWER BOITIER D'HELICE	1	1	1	
3	93332-000W5	BEARING ROULEMENT	1	1	1	
4	61N-45587-00-07	SHIM (T=0.7MM) CALE (T=0.7MM)	1	1	1	UR
	61N-45587-00-10	SHIM (T=1.0MM) CALE (T=1.0MM)	1	1	1	UR
	61N-45587-00-11	SHIM (T=1.1MM) CALE (T=1.1MM)	1	1	1	UR
	61N-45587-00-12	SHIM (T=1.2MM) CALE (T=1.2MM)	1	1	1	UR
	61N-45587-00-13	SHIM (T=1.3MM) CALE (T=1.3MM)	1	1	1	UR
	61N-45587-00-14	SHIM (T=1.4MM) CALE (T=1.4MM)	1	1	1	UR
	61N-45587-00-15	SHIM (T=1.5MM) CALE (T=1.5MM)	1	1	1	UR
	61N-45587-00-16	SHIM (T=1.6MM) CALE (T=1.6MM)	1	1	1	UR
5	61N-45536-00	SLEEVE, DRIVE SHAFT MANCHON, ARBRE MOTEUR	1	1	1	
6	93315-220V7	BEARING ROULEMENT	1	1	1	
7	61N-44362-00	TUBE, WATER TUBE D'EAU	1	1		UR S
	61N-44362-10	TUBE, WATER TUBE D'EAU	1	1	1	UR L
8	93210-22164	O-RING JOINT TORIQUE	1	1		UR S
9	93210-26130	O-RING JOINT TORIQUE	1	1		UR S
	93210-26130	O-RING JOINT TORIQUE	2	2	2	UR L
10	65W-44328-00	PLATE PLAQUETTE	1	1	1	UR L
11	61N-44311-01	HOUSING, WATER PUMP CORPS, POMPE A EAU	1	1	1	
12	6L2-44367-00	DAMPER, WATER SEAL JOINT TUBE D'EAU	1	1	1	
13	61N-44322-01	INSERT, CARTRIDGE CUVETTE	1	1	1	
14	6H4-44352-02	IMPELLER TURBINE	1	1	1	
15	93210-45161	O-RING JOINT TORIQUE	1	1	1	

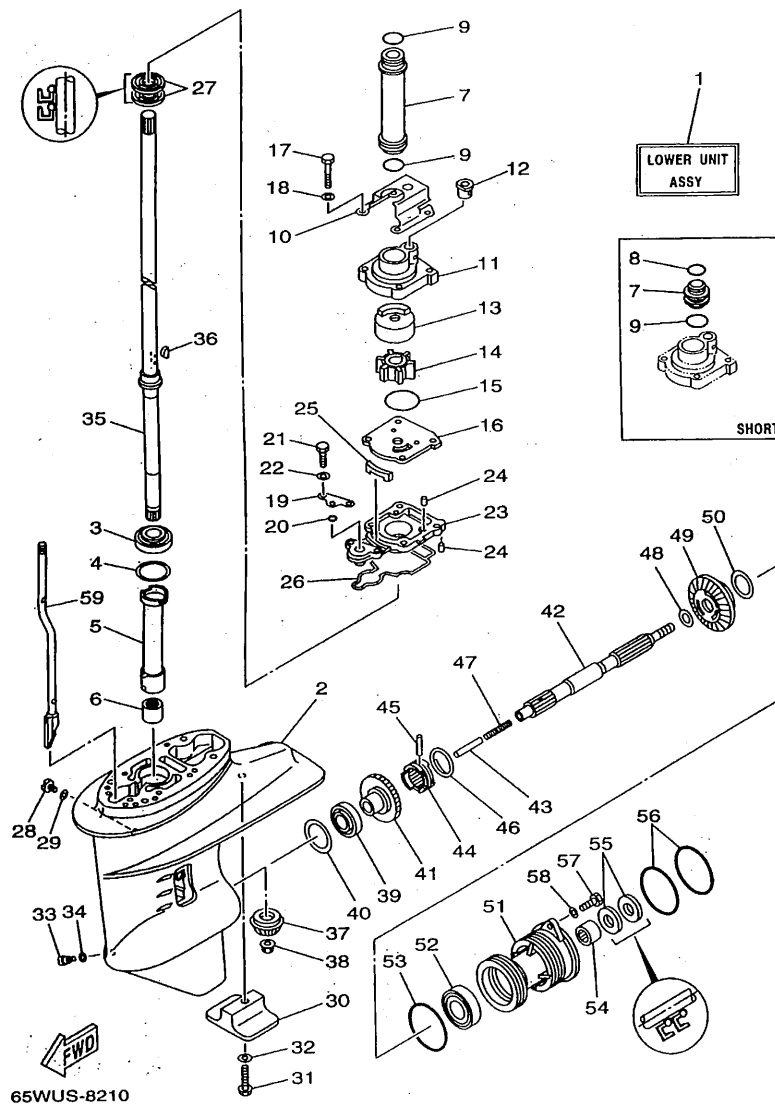


FIG. 21 LOWER CASING. DRIVE 1

BOITIER D'HELICE, TRANSMISSION 1

REF. NO.	PART NO. NO. PIECES	DESCRIPTION DESCRIPTION	W	W	W	REMARKS REMARQUES
16	61N-44323-00	OUTER PLATE, CARTRIDGE PLAQUE EXTERIEURE	1	1	1	
17	97095-06040	BOLT BOULON	4	4	4	
18	92995-06600	WASHER RONDELLE	4	4	4	
19	65W-44176-00	BRACKET SUPPORT	1	1	1	
20	93210-06ME6	O-RING JOINT TORIQUE	1	1	1	
21	97095-06025	BOLT BOULON	2	2	2	
22	92995-06600	WASHER RONDELLE	2	2	2	
23	65W-45331-00-5B	HOUSING, BEARING FLASQUE, ROULEMENT	1	1	1	
24	93604-10M03	PIN, DOWEL GOUJON	3	3	3	
25	61N-45127-00	SEAL JOINT	1	1	1	
26	61N-45315-00	PACKING, LOWER CASING JOINT, BOITIER D'HELICE	1	1	1	
27	93101-22067	OIL SEAL JOINT SPY	2	2	2	
28	90340-08M04	PLUG, STRAIGHT SCREW PLOT, FILETE DROIT	1	1	1	
29	90430-08020	GASKET JOINT	1	1	1	
30	61N-45251-00	ANODE ANODE	1	1	1	
31	95895-06035	BOLT, FLANGE BOULON, A COLLERETTE	1	1	1	
32	92990-06300	WASHER, INTERNAL TOOTH RONDELLE, DENTURE INTERNE	1	1	1	
33	688-45341-00	PLUG, DRAIN BOUCHON DE VIDANGE	1	1	1	
34	90430-08020	GASKET JOINT	1	1	1	
35	61N-45510-00	DRIVE SHAFT ASSY ARBRE MOTEUR (ENS.)	1	1		UR S
36	61N-45510-10	DRIVE SHAFT ASSY ARBRE MOTEUR (ENS.)	1	1	1	UR L
37	90280-03024	KEY, WOODRUFF CLAVETTE, DEMI-LUNE	1	1	1	
38	61N-45551-00	PINION PIGNON D'ATTAQUE	1	1	1	
39	90179-10M14	NUT ECROU	1	1	1	
40	93332-00005	BEARING ROULEMENT	1	1	1	
41	6L2-45567-00-10	SHIM (T:1.0MM) CALE (T:1.0MM)	1	1	1	UR
42	6L2-45567-00-11	SHIM (T:1.1MM) CALE (T:1.1MM)	1	1	1	UR

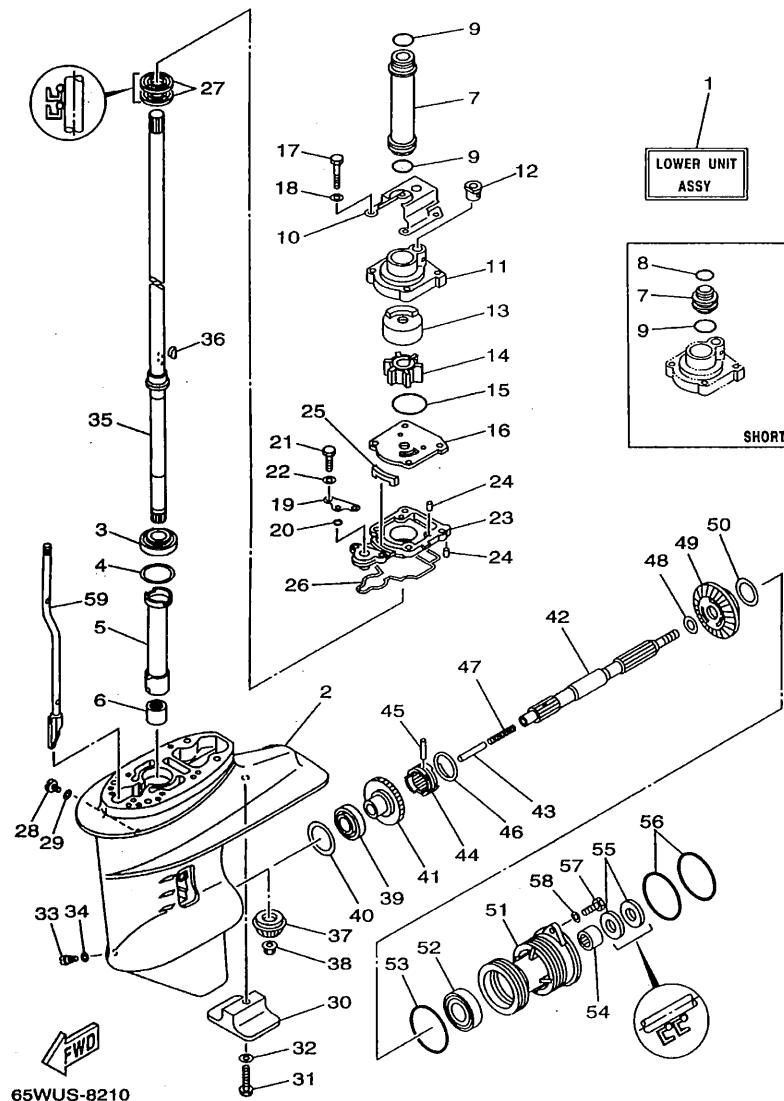


FIG. 21 LOWER CASING. DRIVE 1

BOITIER D'HELICE, TRANSMISSION 1

REF. NO.	PART NO. NO. PIECES	DESCRIPTION DESCRIPTION	W	W	W	REMARKS REMARQUES
40	6L2-45567-00-12	SHIM (T:1.2MM)	1	1	1	UR
	6L2-45567-00-13	CALE (T:1.2MM)	1	1	1	UR
	6L2-45567-00-14	SHIM (T:1.3MM)	1	1	1	UR
	6L2-45567-00-14	CALE (T:1.3MM)	1	1	1	UR
41	61N-45560-00	GEAR PIGNON	1	1	1	
42	6L2-45611-00	SHAFT, PROPELLER ARBRE, HELICE	1	1	1	
43	648-45635-00	PLUNGER, SHIFT POUSSOIR D'EMBRAYAGE	1	1	1	
44	664-45631-01	CLUTCH, DOG CRABOT	1	1	1	
45	90250-05010	PIN, STRAIGHT GOUPILLE, DROITE	1	1	1	
46	648-45633-00	RING, CROSS PIN JONC, GOUPILLE CRABOT	1	1	1	
47	90501-10065	SPRING, COMPRESSION RESSORT, COMPRESSION	1	1	1	
48	90201-20417	WASHER, PLATE RONDELLE, PLATE	1	1	1	
49	61N-45571-00	GEAR PIGNON	1	1	1	
50	6L2-45577-00-10	SHIM (T:1.0MM)	1	1	1	UR
	6L2-45577-00-11	CALE (T:1.0MM)	1	1	1	UR
	6L2-45577-00-12	SHIM (T:1.1MM)	1	1	1	UR
	6L2-45577-00-13	CALE (T:1.1MM)	1	1	1	UR
51	61N-45361-01-4D	CAP, LOWER CASING COUVERCLE, BOITIER D'HELICE	1	1	1	UR
52	93306-00612	BEARING ROULEMENT	1	1	1	
53	93210-64ME7	O-RING JOINT TORIQUE	1	1	1	
54	93315-22004	BEARING ROULEMENT	1	1	1	
55	93101-20M07	OIL SEAL JOINT SPY	2	2	2	
56	93210-65M50	O-RING JOINT TORIQUE	2	2	2	
57	97075-06020	BOLT BOULON	2	2	2	
58	92995-06600	WASHER RONDELLE	2	2	2	
59	65W-44150-00	SHIFT CAM ASSY CAME D'INVERSION	1	1		UR S
	65W-44150-10	SHIFT CAM ASSY CAME D'INVERSION	1	1	1	UR L

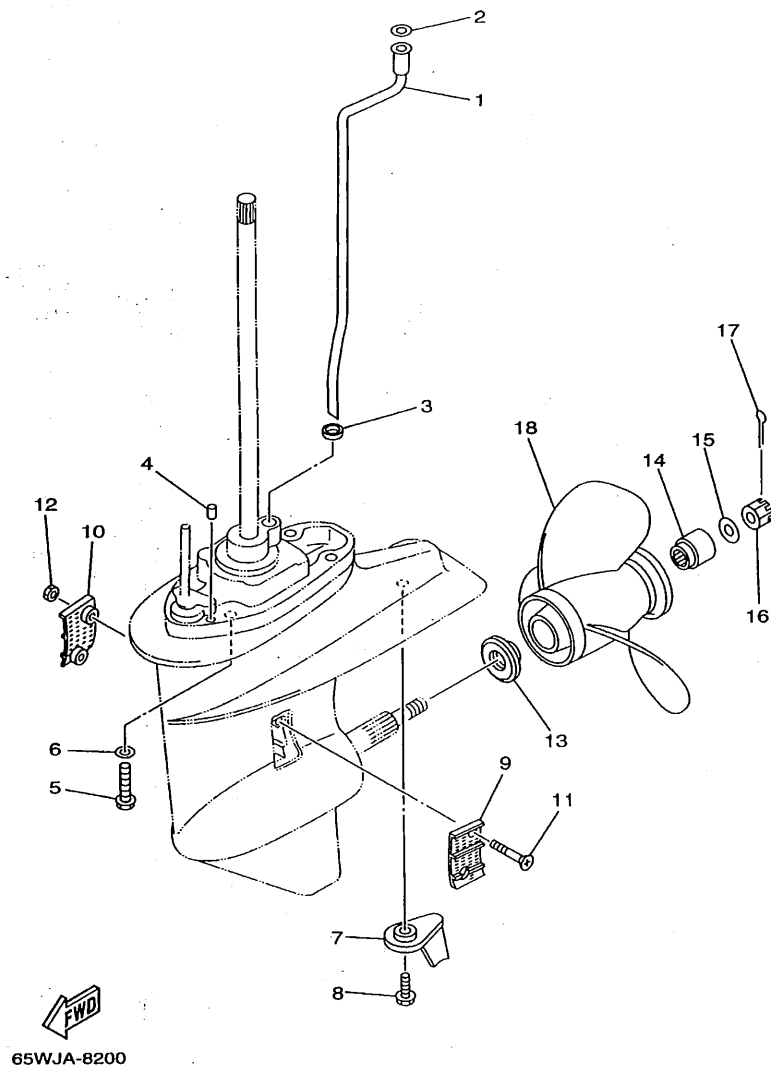
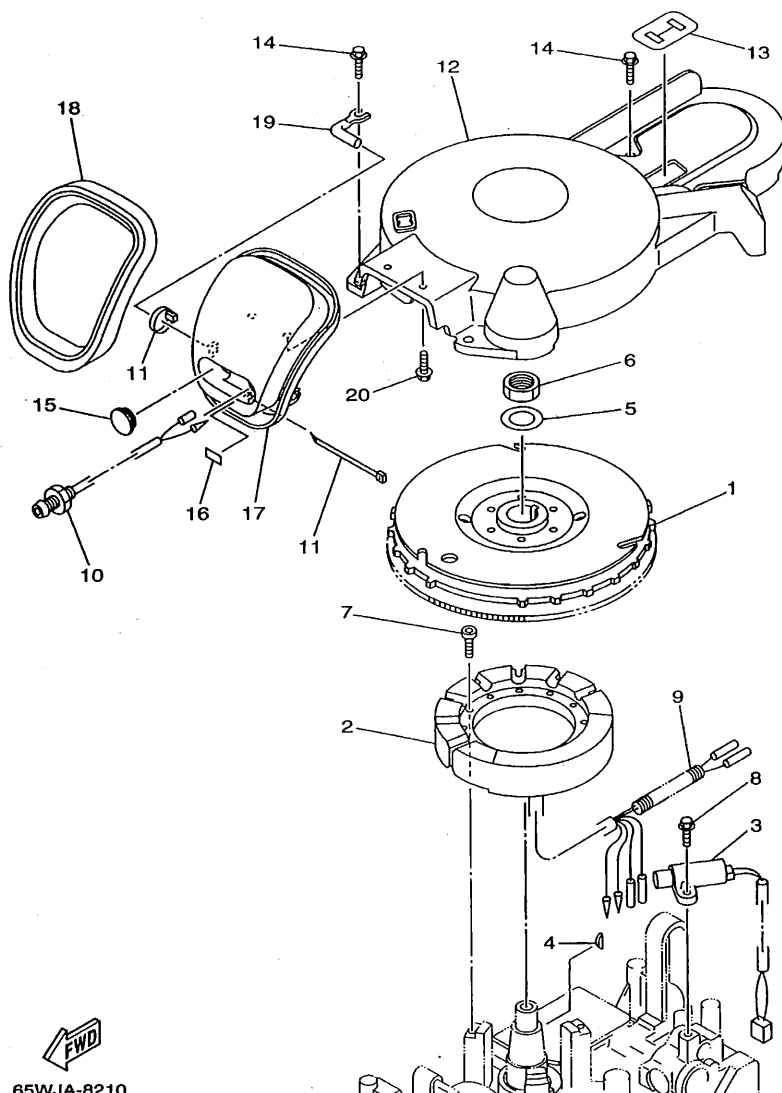


FIG. 22 LOWER CASING. DRIVE 2

BOITIER D'HELICE, TRANSMISSION 2

REF. NO.	PART NO. NO. PIECES	DESCRIPTION DESCRIPTION	u	u	u		REMARKS REMARQUES
1	65W-44361-00	TUBE, WATER TUBE D'EAU	1	1			UR S
	65W-44361-10	TUBE, WATER TUBE D'EAU	1	1	1		UR L
2	90202-12060	WASHER, PLATE RONDELLE, PLATE	1	1	1		
3	90430-12072	GASKET JOINT	1	1	1		
4	93606-12019	PIN, DOWEL GOUJON	2	2	2		
5	90105-10M12	BOLT, WASHER BASED BOULON, AVEC RONDELLE	4	4	4		
6	92995-10600	WASHER RONDELLE	4	4	4		
7	61N-45371-00	TAB-TRIM ANODE DERIVE	1	1	1		
8	90119-06M48	BOLT, WITH WASHER BOULON, AVEC RONDELLE	1	1	1		
9	6L2-45214-00	COVER, WATER INLET GRILLE, ENTREE D'EAU	1	1	1		
10	6L2-45215-00	COVER, WATER INLET GRILLE, ENTREE D'EAU	1	1	1		
11	98780-05030	SCREW, FLAT HEAD VIS, TETE PLATE	2	2	2		
12	90185-05002	NUT, SELF-LOCKING ECROU, AUTO-BLOCANT	2	2	2		
13	6L2-45987-01	SPACER ENTRETOISE	1	1	1		
14	689-45997-00	SPACER ENTRETOISE	1	1	1		
15	92990-14200	WASHER, PLAIN RONDELLE, PLATE	1	1	1		
16	90171-14013	NUT, CASTLE ECROU, CRENELE	1	1	1		
17	91490-30022	PIN, COTTER GOUPILLE, FENDUE	1	1	1		
18	664-45941-01-EL	PROPELLER (3X9-7/8"X9"-F) HELICE (3X9-7/8"X9"-F)	1	1	1		UR
	664-45943-01-EL	PROPELLER (3X9-7/8"X8"-F) HELICE (3X9-7/8"X8"-F)	1	1	1		UR
	664-45945-00-EL	PROPELLER (3X9-7/8"X10-1/2"-F) HELICE (3X9-7/8"X10-1/2"-F)	1	1	1		UR
	664-45947-01-EL	PROPELLER (3X9-7/8"X11-1/4"-F) HELICE (3X9-7/8"X11-1/4"-F)	1	1	1		UR
	664-45949-02-EL	PROPELLER (3X9-7/8"X13"-F) HELICE (3X9-7/8"X13"-F)	1	1	1		UR
	664-45952-00-EL	PROPELLER (3X9-7/8"X14"-F) HELICE (3X9-7/8"X14"-F)	1	1	1		UR
	664-45954-00-EL	PROPELLER (3X9-7/8"X12"-F) HELICE (3X9-7/8"X12"-F)	1	1	1		UR
	664-45970-00-98	PROPELLER (3X9-1/8"X13"-F) HELICE (3X9-1/8"X13"-F)	1	1	1		UR STAINLESS STEEL
	664-45972-00-98	PROPELLER (3X9-1/8"X12"-F) HELICE (3X9-1/8"X12"-F)	1	1	1		UR STAINLESS STEEL

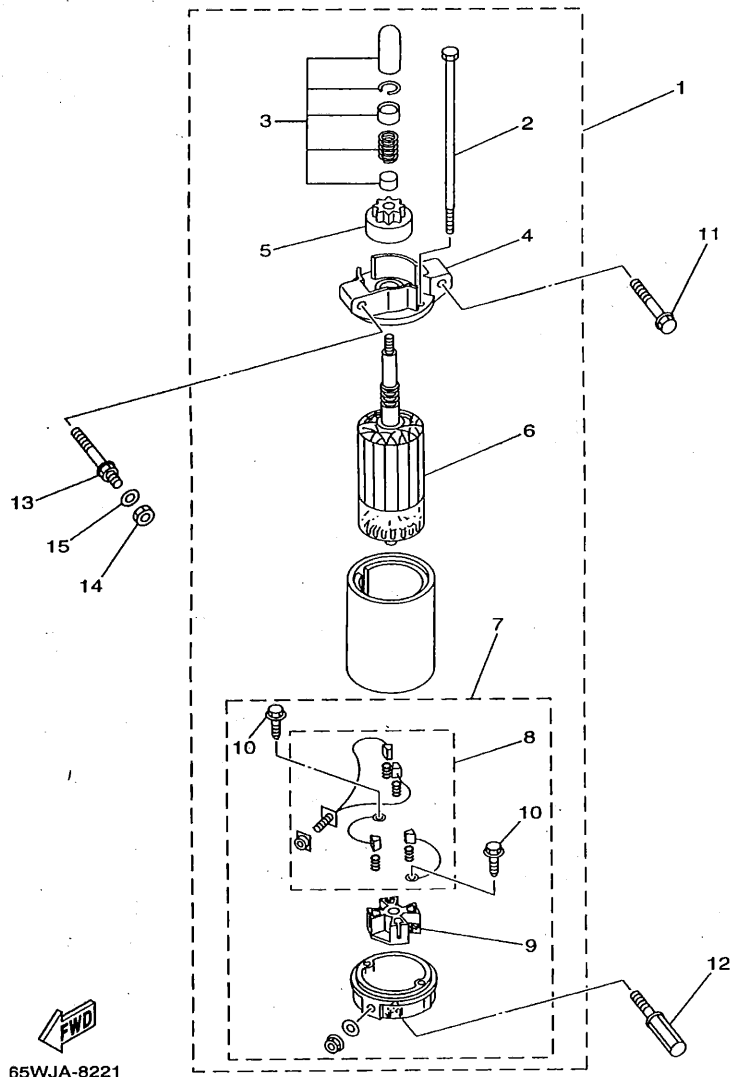


65WJA-8210

FIG. 23 GENERATOR

GENERATRICE

REF. NO.	PART NO. NO. PIECES	DESCRIPTION DESCRIPTION	u	u	u	REMARKS REMARQUES
1	65W-85550-00	ROTOR ASSY ROTOR CPLT	1	1	1	
2	65W-85510-00	STATOR ASSY STATOR CPLT		1		UR 6A
	65W-85510-10	STATOR ASSY STATOR CPLT	1		1	UR 15A
3	65W-85580-00	COIL, PULSER BOBINE, PULSEUR	1	1	1	
4	65W-11545-00	KEY, WOODRUFF CLAVETTE, DEMI-LUNE	1	1	1	
5	90201-21M18	WASHER, PLATE RONDELLE, PLATE	1	1	1	
6	90170-20137	NUT ECROU	1	1	1	
7	91380-05025	BOLT BOULON		3		UR 6A
	91380-05030	BOLT BOULON	3		3	UR 15A
8	97595-05516	BOLT, WITH WASHER VIS HEXAGONAL	2	2	2	
9	90446-10M82	HOSE DURITE	1	1	1	
10	65W-85410-00	EMERGENCY SIGNAL LIGHT ASSY FEU DE DETRESSE	1	1	1	
11	90465-11M10	CLAMP BRIDE	2	2	2	
12	65W-81337-00	COVER, FLYWHEEL COUVERCLE, VOLANT	1	1	1	
13	65W-81639-00	PLATE, ARMATURE FITTING PLAQUE, FIXATION D'INDUIT	1	1	1	
14	97595-06525	BOLT, WITH WASHER VIS HEXAGONAL	4	4	4	
15	6G1-42725-00	GROMMET PASSE-FIL	1	1	1	
16	65W-84342-00	SEAT, EMBLEM SIEGE, EMBLEME	1	1	1	
17	65W-15758-10	GUIDE, ROPE GUIDE DE CABLE	1	1	1	
18	65W-15762-00	SEAL, RUBBER 2 JOINT CAOUTCHOUC 2	1	1	1	
19	65W-15771-00	STAY 1 SUPPORT 1	1	1	1	
20	97595-06620	BOLT, WITH WASHER VIS HEXAGONAL	1	1	1	



65WJA-8221

FIG. 24 STARTING MOTOR

DEMARREUR ELECTRIQUE

REF. NO.	PART NO. NO. PIECES	DESCRIPTION DESCRIPTION	u	±	u		REMARKS REMARQUES
1	65W-81800-00	STARTING MOTOR ASSY DEMARREUR ELECTRIQUE COMPLET	1	1	1		
2	65W-81826-00	.BOLT .BOULON	2	2	2		
3	65W-81857-00	.RETAINER .ARRETOIR	1	1	1		
4	65W-81830-00	.FRONT BRACKET ASSY .SUPPORT AVANT	1	1	1		
5	65W-81807-00	.GEAR ASSY, STARTING MOTOR .PIGNON, DEMARREUR ELECTRIQUE	1	1	1		
6	65W-81850-00	.ARMATURE ASSY .INDUIT	1	1	1		
7	65W-81820-00	.REAR BRACKET ASSY .SUPPORT ARRIERE COMPLET	1	1	1		
8	65W-81801-00	.BRUSH SET .CHARBON	1	1	1		
9	65W-81840-00	.BRUSH HOLDER ASSY .SUPPORT DE CHARBON	1	1	1		
10	65W-8182S-00	.SCREW .VIS	2	2	2		
11	90119-08M39	BOLT, WITH WASHER BOULON, AVEC RONDELLE	1	1	1		
12	90109-08M77	BOLT BOULON	1	1	1		
13	90109-08M78	BOLT BOULON	1	1	1		
14	95380-08700	NUT ECROU	1	1	1		
15	92990-08600	WASHER, PLATE RONDELLE, PLATE	1	1	1		



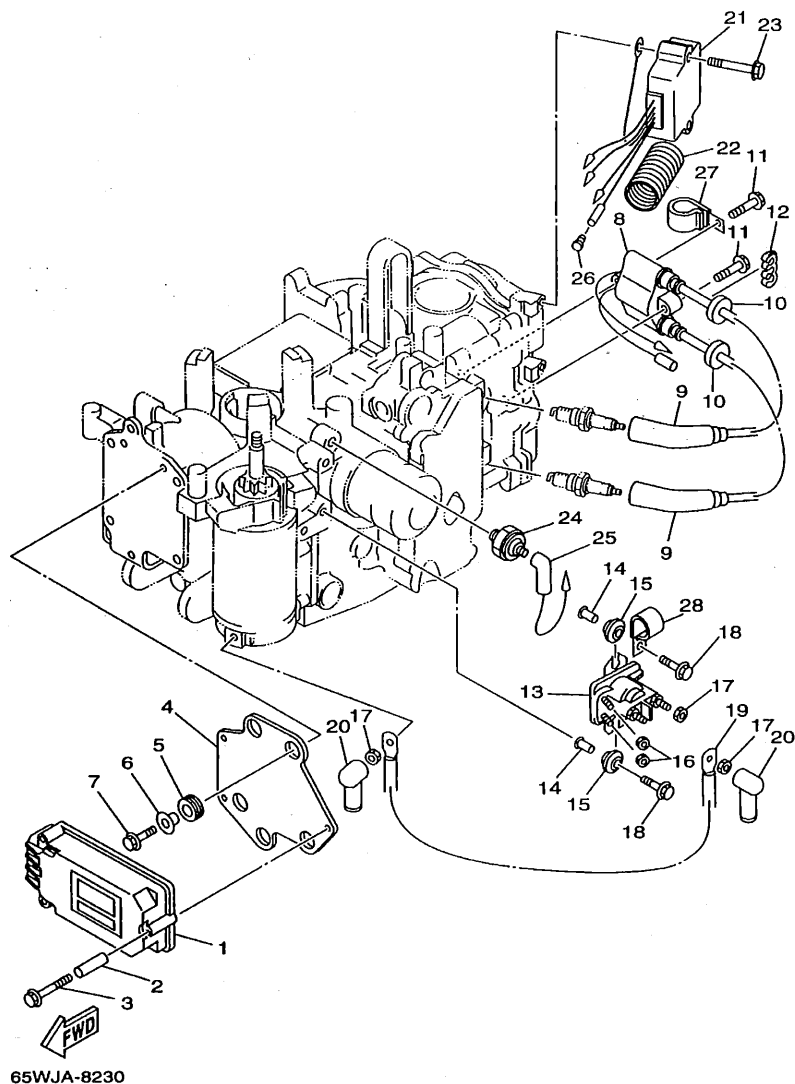


FIG. 25 ELECTRICAL 1

PARTIE ELECTRIQUE 1

REF. NO.	PART NO. NO. PIECES	DESCRIPTION DESCRIPTION	W	W	W	REMARKS REMARQUES
1	65W-85540-00	C.D.I. UNIT ASSY BLOC C.D.I.	1	1	1	UR
	65W-85540-10	C.D.I. UNIT ASSY BLOC C.D.I.	1	1	1	UR *ECM
2	65W-86129-00	COLLAR COLLERETTE	3	3	3	
3	65W-8252V-00	SCREW, SPECIAL VIS, SPECIALE	3	3	3	
4	65W-85542-00	BRACKET SUPPORT	1	1	1	
5	65W-85547-00	DAMPER AMORTISSEUR	3	3	3	
6	65W-86129-10	COLLAR COLLERETTE	3	3	3	
7	65W-8252V-10	SCREW, SPECIAL VIS, SPECIALE	3	3	3	
8	65W-85570-00	IGNITION COIL ASSY BOBINE D'ALLUMAGE (ENS.)	1	1	1	
9	6G8-82370-20	PLUG CAP ASSY ANTIPARASITE	2	2	2	
10	90480-25161	GROMMET PASSE-FIL	2	2	2	
11	97595-06530	BOLT, WITH WASHER VIS HEXAGONAL	2	2	2	
12	90464-07M05	CLAMP BRIDE	1	1	1	
13	65W-81941-00	STARTER RELAY ASSY LANCEUR RELAIS (ENS.)	1	1	1	
14	65W-8191C-00	COLLAR COLLERETTE	2	2	2	
15	65W-81922-00	GROMMET OUILLET CAOUTCHOUC	2	2	2	
16	65W-8182A-00	NUT ECROU	2	2	2	
17	65W-8182B-00	NUT, SPECIAL ECROU, SPECIAL	3	3	3	
18	97595-06525	BOLT, WITH WASHER VIS HEXAGONAL	2	2	2	
19	65W-82117-00	WIRE, LEAD FIL	1	1	1	
20	6G5-82119-10	COVER, LEAD WIRE GARNITURE, FIL	2	2	2	
21	65W-81960-00	RECTIFIER & REGULATOR ASSY REDRESSEUR REGULATEUR CPLT	1	1	1	
22	6K3-83557-00	TUBE TUBE	1	1	1	
23	97595-06540	BOLT, WITH WASHER VIS HEXAGONAL	2	2	2	

\*ECM: FOR EMISSION CONTROL MODEL.

\*ECM: POUR MODELE CONTROLE D'EMISSIONS.

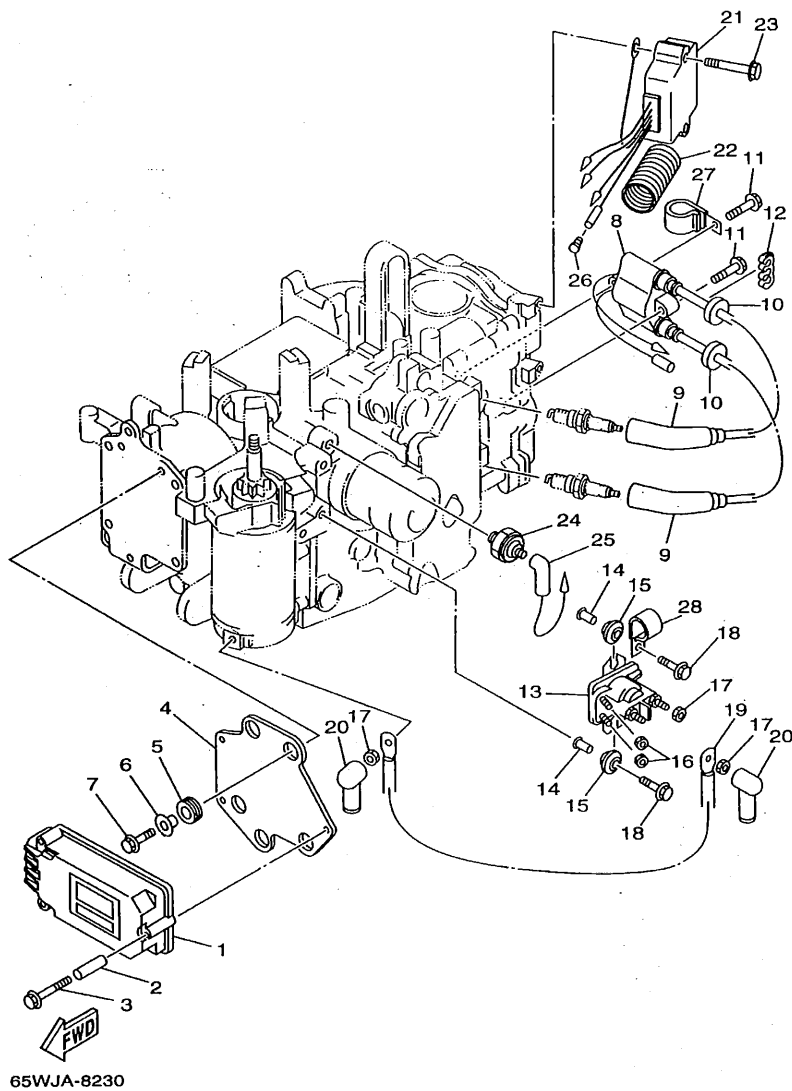


FIG. 25 ELECTRICAL 1

## PARTIE ELECTRIQUE 1

[illegible]

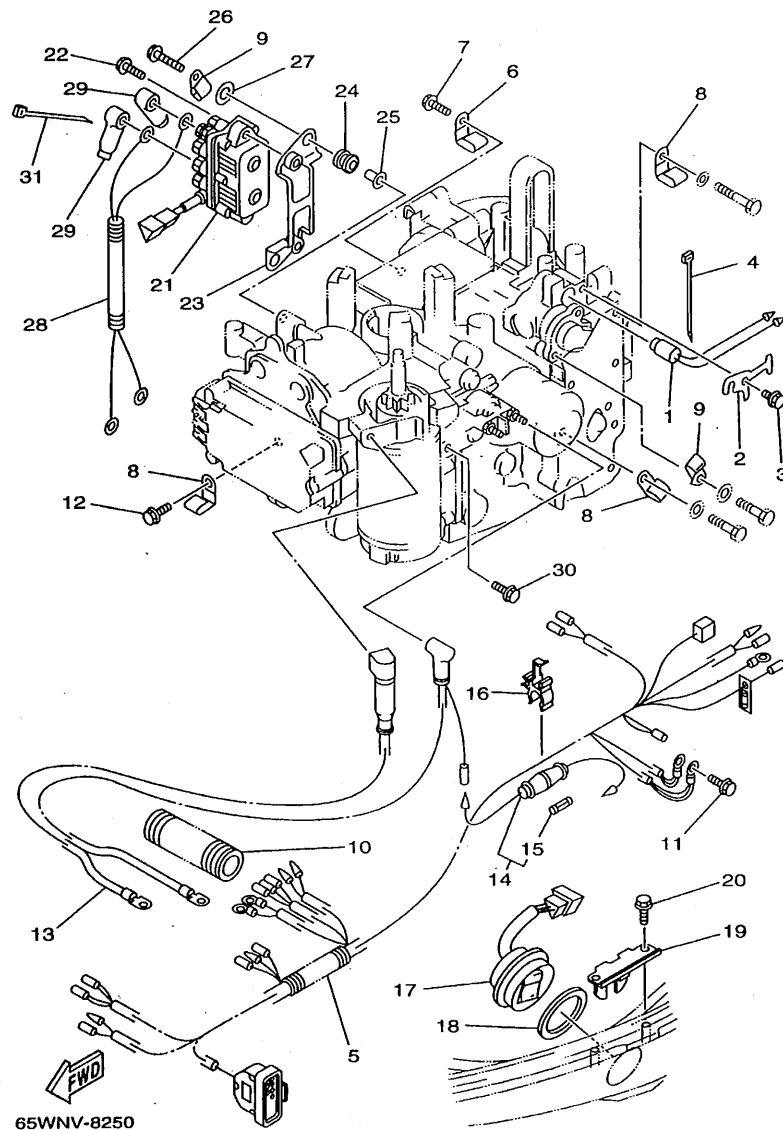


FIG. 26 ELECTRICAL 2

PARTIE ELECTRIQUE 2

REF. NO.	PART NO. NO. PIECES	DESCRIPTION DESCRIPTION	W	W	W	REMARKS REMARQUES
1	65W-85790-00	THERMOSENSOR ASSY SENSITOMETRE	1	1	1	
2	65W-85757-00	RETAINER ARRETOIR	1	1	1	
3	97595-06512	BOLT, WITH WASHER VIS HEXAGONAL	1	1	1	
4	90465-11M10	CLAMP BRIDE	1	1	1	
5	65W-82590-00	WIRE HARNESS ASSY FAISCEAU DE FILS COMPLET		1		UR
	65W-82590-10	WIRE HARNESS ASSY FAISCEAU DE FILS COMPLET	1			UR
	65W-82590-30	WIRE HARNESS ASSY FAISCEAU DE FILS COMPLET			1	UR
6	90465-08M08	CLAMP BRIDE			1	
7	97595-06516	BOLT, WITH WASHER VIS HEXAGONAL			1	
8	90465-08M08	CLAMP BRIDE	3	3	3	
9	90465-08M51	CLAMP BRIDE	1	1	2	
10	6N7-83557-00	TUBE TUBE	1	2	1	I.DIA.: 22MM
11	97595-06516	BOLT, WITH WASHER VIS HEXAGONAL	2	2	2	
12	97595-05516	BOLT, WITH WASHER VIS HEXAGONAL	1	1	1	
13	65W-82105-00	WIRE HARNESS FAISCEAU DE FILS	1	1	1	
14	6G8-82150-00	FUSE HOLDER ASSY SUPPORT DE FUSIBLE	1	1	1	
15	663-82151-00	.FUSE (12V-20A) .FUSIBLE (12V-20A)	1	1	1	
16	6G5-82152-00	HOLDER, FUSE SUPPORT, FUSIBLE	1	1	1	
17	6H1-82563-10	TRIM & TILT SWITCH ASSY INCLINER ET PARER COMMUTATEUR			1	
18	6E5-82587-00	GASKET JOINT			1	
19	62Y-83614-00	BRACKET SUPPORT			1	
20	90109-06M86	BOLT BOULON			1	
21	61A-81950-00	RELAY ASSY RELAIS COMPLET			1	
22	97575-06520	BOLT, WITH WASHER VIS HEXAGONAL			2	
23	65W-81948-00	BRACKET JOINT TORIQUE			1	
24	6A0-82317-00	DAMPER, IGNITION COIL AMORTISSEUR, BOBINE D'ALLUM			2	
25	624-42542-00	PIPE TUYAU			2	

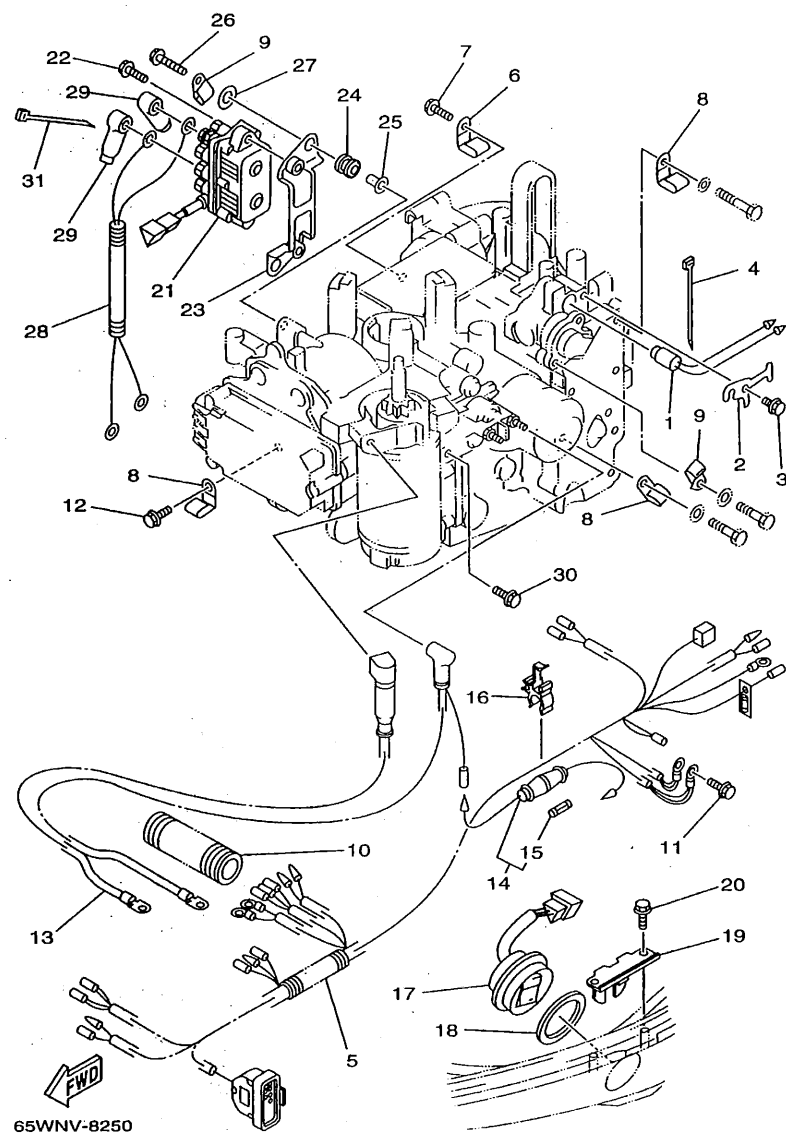


FIG. 26 ELECTRICAL 2

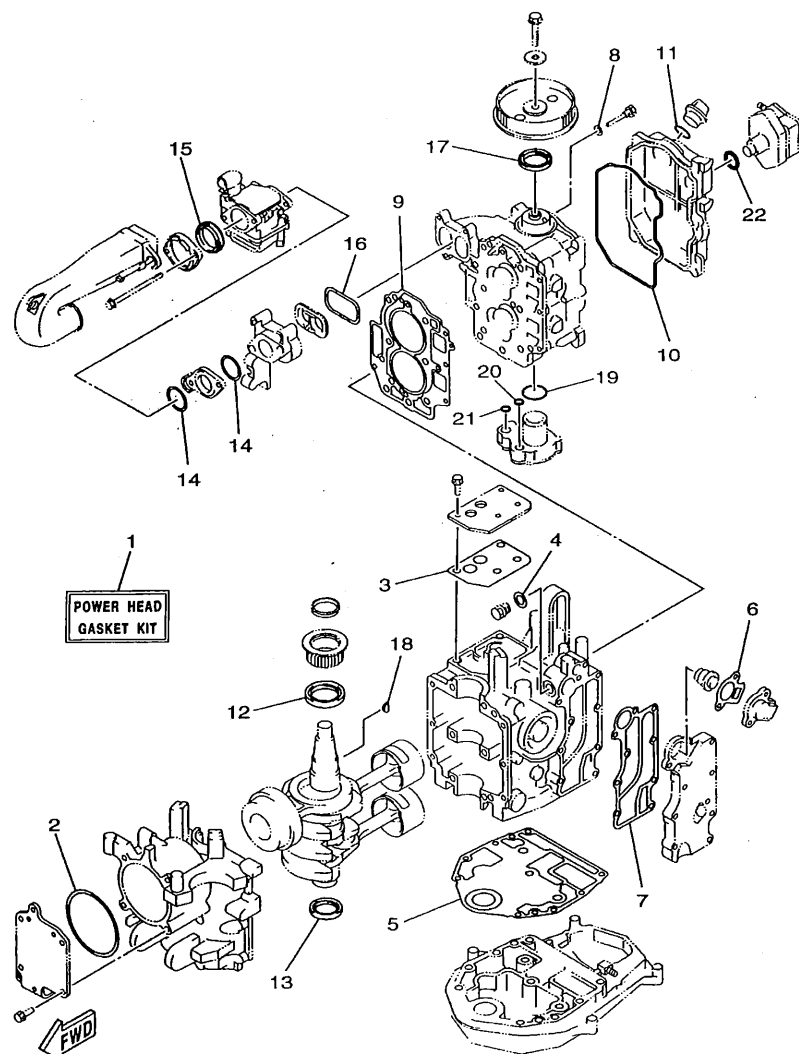
## PARTIE ELECTRIQUE 2

[illegible]



### PARTIE ELECTRIQUE 3

**B3**

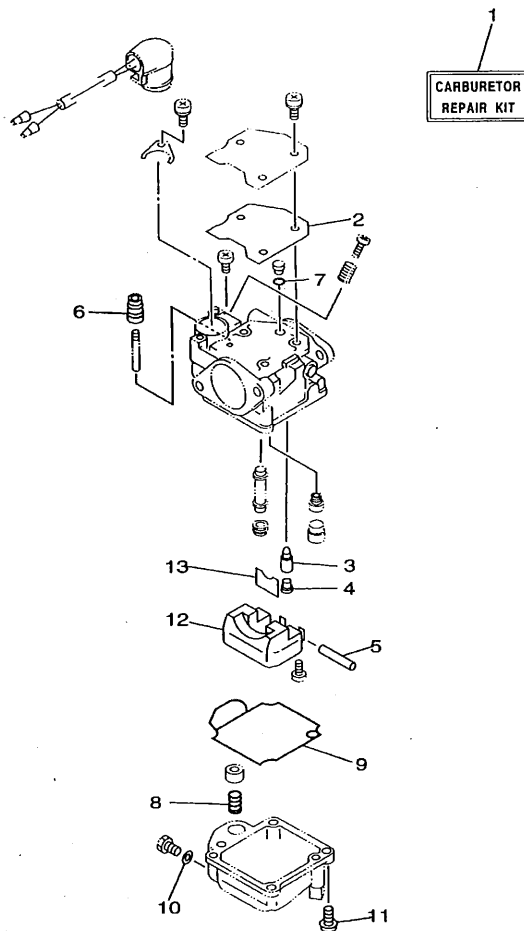


65WJA-8260

FIG. 28 REPAIR KIT 1

KITS DE REPARATION 1

REF. NO.	PART NO. NO. PIECES	DESCRIPTION DESCRIPTION	W	W	W	REMARKS REMARQUES
1	65W-W0001-00	POWER HEAD GASKET KIT POCHETTE DE JINTS TETE MOTRICE	1	1	1	
2	65W-15663-00	.SEAL .JOINT	1	1	1	
3	65W-11169-00	.GASKET, BREATHER COVER .JOINT, COUVERCLE DE RENIFLARD	1	1	1	
4	90430-14115	.GASKET .JOINT	1	1	1	
5	65W-11351-00	.GASKET, CYLINDER .JOINT, D'EMBASE	1	1	1	
6	65W-12414-00	.GASKET, COVER .JOINT, COUVERCLE	1	1	1	
7	65W-41114-00	.GASKET, EXHAUST OUTER COVER .JOINT, COUVERCLE D'ECHAPPEMEN	1	1	1	
8	90430-06014	.GASKET .JOINT	1	1	1	
9	65W-11181-10	.GASKET, CYLINDER HEAD 1 .JOINT, DE CULASSE 1	1	1	1	
10	65W-11356-00	.SEAL, CYLINDER 2 .JOINT, SPY CYLINDRE	1	1	1	
11	93210-24M79	.O-RING .JOINT TORIQUE	1	1	1	
12	93102-43M42	.OIL SEAL .JOINT SPY	1	1	1	
13	93102-35M47	.OIL SEAL .JOINT SPY	1	1	1	
14	65W-14198-00	.GASKET .JOINT	2	2	2	
15	65W-14457-00	.SEAL .JOINT	1	1	1	
16	65W-13645-00	.GASKET, MANIFOLD 1 .JOINT, TUBULURE 1	1	1	1	
17	93102-37M40	.OIL SEAL .JOINT SPY	1	1	1	
18	90280-04M06	.KEY, WOODRUFF .CLAVETTE, DEMI-LUNE	1	1	1	
19	93210-33MH2	.O-RING .JOINT TORIQUE	1	1	1	
20	93210-12MG9	.O-RING .JOINT TORIQUE	1	1	1	
21	93210-14515	.O-RING .JOINT TORIQUE	1	1	1	
22	93210-24M79	.O-RING .JOINT TORIQUE	1	1	1	



**FWD**  
65WJA-8270

FIG. 29 REPAIR KIT 2

KITS DE REPARATION 2

REF. NO.	PART NO. NO. PIECES	DESCRIPTION DESCRIPTION	W	U	U		REMARKS REMARQUES
1	65W-W0093-00	CARBURETOR REPAIR KIT KIT DE REPARATION CARBURATEUR	1	1	1		
2	65W-14126-00	.GASKET .JOINT	1	1	1		
3	6G1-14546-00	.VALVE, NEEDLE .POINTEAU	1	1	1		
4	676-14186-00	.PIN, FLOAT .AXE, FLOTTEUR	1	1	1		
5	6H4-14548-00	.PIN, FLOAT ARM .AXE, BRAS DE FLOTTEUR	1	1	1		
6	65W-14373-00	.COVER, PLUNGER CAP .COUVERCLE DE PLONGEUR	1	1	1		
7	65W-14147-00	.O-RING .JOINT TORIQUE	1	1	1		
8	65W-14335-00	.SPRING, PLUNGER .RESSORT, PLONGEUR	1	1	1		
9	65W-14948-00	.GASKET, FLOAT CHAMBER .JOINT, CUVE DE FLOTTEUR	1	1	1		
10	65W-14398-00	.GASKET .JOINT	1	1	1		
11	97980-04114	.SCREW, WITH WASHER .VIS, AVEC RONDELLE	4	4	4		
12	63V-14985-00	.FLOAT .FLOTTEUR	1	1	1		
13	663-14159-00	.CLIP .JONC	1	1	1		

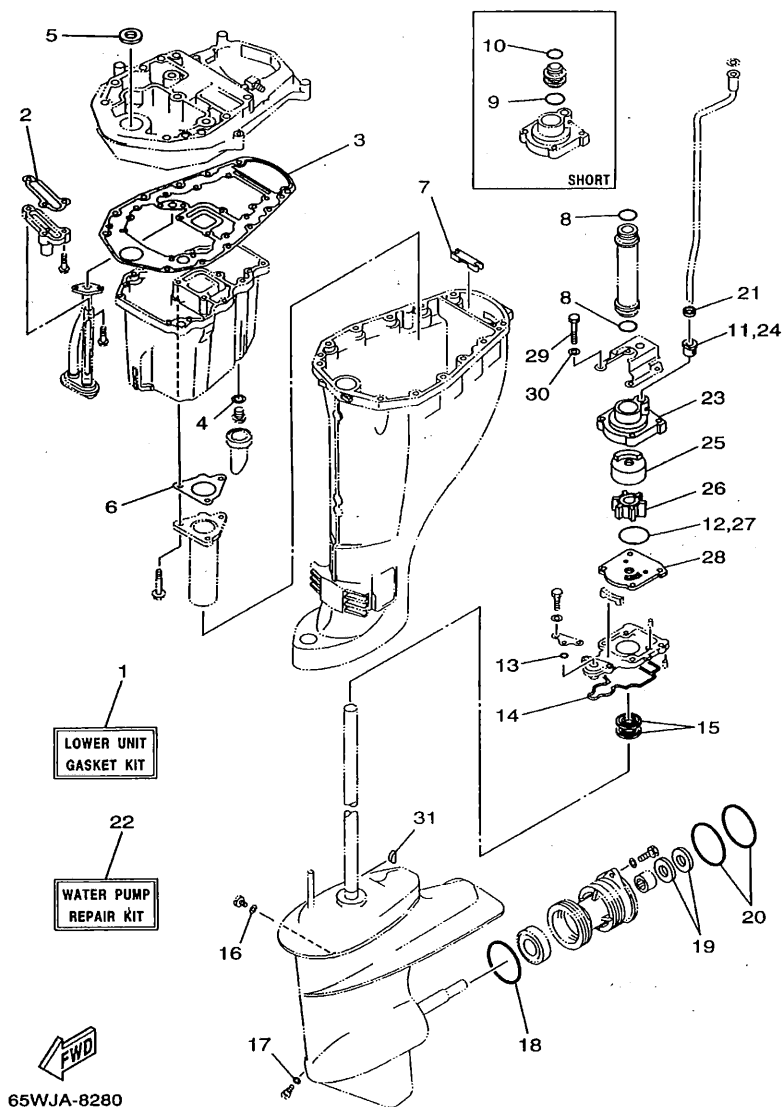


FIG. 30 REPAIR KIT 3

KITS DE REPARATION 3

REF. NO.	PART NO. NO. PIECES	DESCRIPTION DESCRIPTION	W	I	E	REMARKS REMARQUES
1	65W-W0001-20	LOWER UNIT GASKET KIT POCHETTE DE JOINTS EMBASE	1	1	1	
2	62Y-13475-00	.GASKET .JOINT	1	1	1	
3	62Y-15312-00	.GASKET, OIL PAN .JOINT DE VENTILATEUR D'HUILE	1	1	1	
4	90430-14M09	.GASKET .JOINT	1	1	1	
5	93104-16M01	.OIL SEAL .JOINT SPY	1	1	1	
6	62Y-41133-00	.GASKET, EXHAUST MANIFOLD 1 .JOINT, PIPE D'ECHAPPEMENT	1	1	1	
7	65W-45128-00	.SEAL 2 .JOINT 2	1	1	1	
8	93210-26130	.O-RING .JOINT TORIQUE	2	2	2	UR L
9	93210-26130	.O-RING .JOINT TORIQUE	1	1	1	UR S
10	93210-22164	.O-RING .JOINT TORIQUE	1	1	1	UR S
11	6L2-44367-00	.DAMPER, WATER SEAL .JOINT TUBE D'EAU	1	1	1	
12	93210-45161	.O-RING .JOINT TORIQUE	1	1	1	
13	93210-06ME6	.O-RING .JOINT TORIQUE	1	1	1	
14	61N-45315-00	.PACKING, LOWER CASING .JOINT, BOITIER D'HELICE	1	1	1	
15	93101-22067	.OIL SEAL .JOINT SPY	2	2	2	
16	90430-08020	.GASKET .JOINT	1	1	1	
17	90430-08020	.GASKET .JOINT	1	1	1	
18	93210-64ME7	.O-RING .JOINT TORIQUE	1	1	1	
19	93101-20M07	.OIL SEAL .JOINT SPY	2	2	2	
20	93210-65M50	.O-RING .JOINT TORIQUE	2	2	2	
21	90430-12072	.GASKET .JOINT	1	1	1	
22	61N-W0078-11	WATER PUMP REPAIR KIT KIT DE REPARATION DE LA POMPE	1	1	1	
23	61N-44311-01	.HOUSING, WATER PUMP .CORPS, POMPE A EAU	1	1	1	
24	6L2-44367-00	.DAMPER, WATER SEAL .JOINT TUBE D'EAU	1	1	1	
25	61N-44322-01	.INSERT, CARTRIDGE .CUVETTE	1	1	1	
26	6H4-44352-02	.IMPELLER .TURBINE	1	1	1	
27	93210-45161	.O-RING .JOINT TORIQUE	1	1	1	





NUMERICAL INDEX  
INDEX NUMERIQUE

PART NO. NO. PIECES	REF. NO.	PART NO. NO. PIECES	REF. NO.	PART NO. NO. PIECES	REF. NO.	PART NO. NO. PIECES	REF. NO.	PART NO. NO. PIECES	REF. NO.	PART NO. NO. PIECES	REF. NO.
65W-W0001-00	28 - 1	65W-11665-00	3 - 12	65W-14271-00	5 - 5	65W-15370-00	5 - 17	65W-42131-01	16 - 34	65W-43112-00-4D	12 - 10
65W-W0001-20	30 - 1	65W-12111-00	4 - 1	6A0-14325-00	9 - 10	65W-15370-10	5 - 18	6J0-42137-00	16 - 20	65W-43112-01-4D	12 - 10
65W-W0070-10	10 - 10	51Y-12114-00	4 - 4	65W-14335-00	6 - 22	65W-15397-00	5 - 12	65W-42138-00	16 - 13	65W-43112-10-4D	13 - 6
61N-W0078-11	30 - 22	62Y-12116-00	4 - 3		29 - 8	65W-15663-00	1 - 7	65W-42159-00	16 - 14	6J8-43113-01	12 - 24
65W-W0084-01-4D16	1	30X-12117-00	4 - 5	65W-14346-00	6 - 30		28 - 2	6F6-42177-A0	16 - 18	648-43114-01	12 - 8
65W-W009A-00-4D	2 - 1	30X-12118-00	4 - 6	65W-14371-00	6 - 23	65W-15758-10	23 - 17	66M-42177-00	16 - 18		12 - 13
65W-W009A-10-4D	2 - 1	51Y-12119-00	4 - 7	65W-14373-00	6 - 18	65W-15762-00	23 - 18	65W-42508-00	17 - 1	663-43118-01-4D	12 - 7
65W-W009B-00-4D	1 - 1	62Y-12121-00	4 - 2		29 - 6	65W-15771-00	23 - 19	65W-42511-00-4D	14 - 6		12 - 12
65W-W0093-00	29 - 1	65W-12146-00	4 - 8	65W-14379-00	6 - 19	65W-24135-00	25 - 27	65W-42511-10-4D	14 - 6	63D-43131-00	12 - 21
65W-11111-00-94	2 - 2	65W-12151-00	4 - 9	65W-14380-00	6 - 29	65W-24251-00	9 - 17	65W-42527-00	17 - 2		13 - 13
65W-11111-10-94	2 - 2	65W-12157-00	1 - 13	65W-14398-00	6 - 26	6G1-24304-02	9 - 22	648-42528-00	14 - 1	6E5-43145-01	19 - 9
65W-11119-00	1 - 12	62Y-12158-00	4 - 11		29 - 10	62Y-24374-01	9 - 14	65W-42528-00	17 - 12	6G5-43145-00	12 - 26
62Y-11133-10	2 - 3	62Y-12159-00	4 - 10	65W-14409-00	5 - 15	65W-24377-00	5 - 11	624-42542-00	26 - 25		13 - 17
65W-11169-00	1 - 9	65W-12171-00	7 - 2	65W-14440-00	5 - 1	62Y-24410-02	9 - 1	65W-42561-00	17 - 5	63V-43145-00	12 - 25
65W-11169-00	1 - 10	62Y-12216-00	4 - 13	65W-14457-00	5 - 8	62Y-24411-02	9 - 4	65W-42562-00	17 - 10	65W-43160-00	12 - 58
	28 - 3	65W-12228-00	1 - 8		28 - 15	62Y-24413-00	9 - 2	65W-42610-00-4D	10 - 1	65W-43191-00	13 - 8
65W-11181-10	2 - 13		1 - 11	65W-14496-00	5 - 4	62Y-24421-01	9 - 3	65W-42610-30-4D	10 - 1	65W-43192-00	13 - 7
	28 - 9	62Y-12238-00	4 - 12	65W-14497-00	18 - 6	62Y-24423-00	9 - 5	65W-42613-00	10 - 2	65W-43311-00-4D	12 - 19
65W-11191-00-94	2 - 17	6G8-12411-02	1 - 17	63V-14523-00	6 - 9	62Y-24444-00	9 - 8	65W-42615-00	10 - 8	65W-43311-10-4D	12 - 19
62Y-11325-00	2 - 5	6H3-12413-00-9M	1 - 18	6G1-14546-00	6 - 13	62Y-24452-00	9 - 12	6E0-42651-02	10 - 4		13 - 11
66M-11327-00-94	2 - 7	65W-12414-00	1 - 19		29 - 3	62Y-24454-00	9 - 7	6E7-42652-00	10 - 6	663-43318-00	12 - 36
66M-11328-00	2 - 6		28 - 6	6H4-14548-00	6 - 17	62Y-24471-00	9 - 9	65W-42678-10	10 - 9	65W-43350-00	12 - 45
65W-11351-00	1 - 16	62Y-12481-00	1 - 24		29 - 5	65W-24481-00	9 - 18	65W-42678-30	10 - 9	66T-43350-00	12 - 45
	28 - 5	66M-12535-00	2 - 8	65W-14572-00	6 - 3	65W-26311-00	16 - 26	65W-42681-10	10 - 11	66T-43350-01	12 - 45
65W-11356-00	2 - 18	62Y-13131-01	9 - 6	65W-14901-00	6 - 1	65W-26326-00	11 - 20	65W-42682-10	10 - 12	65W-43373-00	14 - 2
	28 - 10	65W-13286-00	1 - 20	65W-14901-21	6 - 1	65W-26326-10	11 - 20	65W-42710-00-4D	11 - 1	65W-43613-00	12 - 52
65W-11411-00	3 - 3	65W-13300-00	7 - 11	65W-14943-28	6 - 11	62Y-28100-00	9 - 28	65W-42710-10-4D	11 - 1	65W-43614-00	12 - 50
62Y-11416-00	3 - 4	65W-13323-00	5 - 3	65W-14943-29	6 - 11	65W-41113-00-94	1 - 23	62Y-42716-00	11 - 6	65W-43615-00	12 - 51
62Y-11416-10	3 - 4	65W-13411-00	8 - 5	65W-14947-00	6 - 10	65W-41114-00	1 - 25	6G1-42725-00	11 - 23	65W-43616-00	12 - 49
62Y-11416-20	3 - 4	3FV-13440-00	1 - 22	65W-14947-20	6 - 10		28 - 7		23 - 15	65W-43627-01	12 - 27
65W-11476-00	7 - 9	62Y-13475-00	8 - 3	65W-14948-00	6 - 24	65W-41131-00-94	20 - 3	65W-42725-10	11 - 9	65W-43630-00	12 - 37
65W-11536-00	7 - 8		30 - 2		29 - 9	62Y-41133-00	20 - 4	65W-42725-20	11 - 9	65W-43630-10	12 - 37
65W-11537-00	7 - 3	65W-13640-00	5 - 2	65W-14948-07	6 - 6		30 - 6	6H1-42726-10	11 - 22	65W-43631-00	12 - 47
65W-11545-00	23 - 4	65W-13645-00	5 - 9	676-14948-07	6 - 6	65W-41137-00-94	20 - 1	6H4-42726-00	11 - 22	66T-43631-00	12 - 47
62Y-11575-00	8 - 2		28 - 16	679-14966-00	6 - 7	65W-41211-00	18 - 5	65W-42726-00	11 - 24	66T-43631-10	12 - 47
65W-11603-00	3 - 9	65W-14126-00	6 - 4	65W-14980-00	6 - 25	661-41262-02	18 - 3	65W-42726-10	11 - 24	689-43633-00	17 - 6
65W-11604-00	3 - 9		29 - 2	65W-14980-20	6 - 25	65W-41283-00	18 - 2	62Y-42727-00	11 - 10	65W-4380F-00	15 - 12
65W-11605-00	3 - 9	65W-1414F-00	6 - 20	63V-14985-00	6 - 12	65W-41638-00	18 - 1	65W-42727-00	11 - 10	65W-4380K-00	15 - 16
65W-11631-00-96	3 - 8	65W-1414J-08	6 - 20		29 - 12	6F5-41662-00	18 - 13	682-42727-00	11 - 21	65W-4380L-00	15 - 27
62Y-11633-00	3 - 10	65W-14147-00	6 - 21	65W-14992-00	6 - 27	65W-42101-00-4D	16 - 11	65W-42738-00-4D	11 - 7	65W-43800-00-4D	15 - 1
65W-11635-00	3 - 8		29 - 7	65W-15100-00-94	1 - 2	65W-42101-01-4D	16 - 11	65W-42741-00	11 - 26	6T4-43802-03	15 - 30
65W-11638-00	3 - 8	663-14159-00	6 - 15	65W-15121-00	1 - 6	66M-42119-00	16 - 19	65W-42743-00	11 - 5	65W-43804-00	15 - 3
65W-11642-11	3 - 13		29 - 13	65W-15311-00-5B	8 - 8	664-42119-00	16 - 19	65W-42766-00	11 - 17	65W-43805-00	15 - 4
62Y-11650-00	3 - 5	676-14186-00	6 - 14	62Y-15312-00	8 - 9	65W-42121-00-4D	16 - 37	65W-42815-00-4D	11 - 11	65W-4381B-00	15 - 22
62Y-11654-00	3 - 6		29 - 4		30 - 3	65W-42123-00	16 - 6	6L2-42816-00	11 - 15	65W-43810-00	15 - 17
62Y-11656-00	3 - 7	65W-14198-00	5 - 6	65W-15316-00	8 - 11	65W-42125-00	16 - 16	65W-43111-00-4D	12 - 5	65W-43812-00	15 - 18
62Y-11656-10	3 - 7		28 - 14	65W-15362-00	8 - 1	6G1-42126-00	16 - 15	65W-43111-01-4D	12 - 5	6H1-43816-00	15 - 25
62Y-11656-20	3 - 7	65W-14262-00	5 - 7	6G8-15363-00	2 - 22	65W-42131-00	16 - 34	65W-43111-10-4D	13 - 5	65W-43817-00	15 - 39

NUMERICAL INDEX  
INDEX NUMERIQUE

PART NO. NO. PIECES	REF. NO.	PART NO. NO. PIECES	REF. NO.	PART NO. NO. PIECES	REF. NO.	PART NO. NO. PIECES	REF. NO.	PART NO. NO. PIECES	REF. NO.	PART NO. NO. PIECES	REF. NO.
65W-4382A-00	15 - 47	65W-44143-10	18 - 17	61N-45371-00	22 - 7	65W-81801-00	24 - 8	6K3-83557-00	25 - 22	90149-05M13	16 - 22
6H1-43829-00	15 - 61	65W-44150-00	21 - 59	61N-45510-00	21 - 35	65W-81807-00	24 - 5	6N7-83557-00	26 - 10	90149-14M12	12 - 6
65W-43830-00	15 - 36	65W-44150-10	21 - 59	61N-45510-10	21 - 35	65W-8182A-00	25 - 16	62Y-83614-00	26 - 19		12 - 11
65W-43831-00	15 - 35	65W-44173-00	16 - 38	61N-45536-00	21 - 5	65W-8182B-00	25 - 17	65W-84342-00	23 - 16	90157-06M06	20 - 11
6H1-4384F-10	15 - 57	65W-44176-00	21 - 19	61N-45551-00	21 - 37	65W-8182S-00	24 - 10	65W-85410-00	23 - 10	90161-06M00	27 - 10
65W-43840-00	15 - 15	6E0-44191-11	16 - 10	61N-45560-00	21 - 41	65W-81820-00	24 - 7	65W-85510-00	23 - 2	90170-06O15	18 - 18
62X-43841-00	15 - 33	65W-44192-00	18 - 27	6L2-45567-00-10	21 - 40	65W-81826-00	24 - 2	65W-85510-10	23 - 2	90170-09M03	19 - 5
65W-43843-00	15 - 54	61N-44311-01	21 - 11	6L2-45567-00-11	21 - 40	65W-81830-00	24 - 4	65W-85540-00	25 - 1	90170-20137	3 - 14
6H1-43844-10	15 - 56		30 - 23	6L2-45567-00-12	21 - 40	65W-81840-00	24 - 9	65W-85540-10	25 - 1		23 - 6
65W-43844-00	15 - 48	61N-44322-01	21 - 13	6L2-45567-00-13	21 - 40	65W-81850-00	24 - 6	65W-85542-00	25 - 4	90171-14013	22 - 16
6H1-43845-00	15 - 43		30 - 25	6L2-45567-00-14	21 - 40	65W-81857-00	24 - 3	65W-85547-00	25 - 5	90179-10M14	21 - 38
6H1-43847-00	15 - 45	61N-44323-00	21 - 16	61N-45571-00	21 - 49	65W-81870-00	27 - 8	65W-85550-00	23 - 1	90179-10M33	14 - 25
65W-43851-00	15 - 49		30 - 28	6L2-45577-00-10	21 - 50	65W-8191C-00	25 - 14	65W-85570-00	25 - 8	90185-05002	22 - 12
6T4-43853-00	15 - 37	65W-44328-00	21 - 10	6L2-45577-00-11	21 - 50	65W-81922-00	25 - 15	65W-85580-00	23 - 3	90185-08045	14 - 12
65W-43853-00	15 - 60	6H4-44352-02	21 - 14	6L2-45577-00-12	21 - 50	65W-81941-00	25 - 13	65W-85757-00	26 - 2	90185-08057	16 - 35
65W-43854-00	15 - 46		30 - 26	6L2-45577-00-13	21 - 50	65W-81948-00	26 - 23	65W-85790-00	26 - 1	90185-09M01	19 - 4
65W-43855-00	15 - 52	65W-44361-00	22 - 1	61N-45587-00-07	21 - 4	65W-81949-00	26 - 28	65W-86129-00	25 - 2	90185-10M13	13 - 35
6H1-43856-10	15 - 55	65W-44361-10	22 - 1	61N-45587-00-10	21 - 4	61A-81950-00	26 - 21	65W-86129-10	25 - 6	90185-10M14	17 - 9
65W-4386A-00	15 - 58	61N-44362-00	21 - 7	61N-45587-00-11	21 - 4	65W-81960-00	25 - 21	90101-08M76	12 - 16	90185-10051	14 - 4
65W-4386K-00	15 - 6	61N-44362-10	21 - 7	61N-45587-00-12	21 - 4	65W-82105-00	26 - 13	90101-08M86	14 - 14	90185-22M11	13 - 16
6H1-43861-10	15 - 20	6L2-44367-00	21 - 12	61N-45587-00-13	21 - 4	65W-82117-00	25 - 19	90101-09M01	19 - 7	90201-05M06	18 - 28
	15 - 23		30 - 11	61N-45587-00-14	21 - 4	6G5-82119-10	25 - 20	90101-10M58	12 - 1	90201-06M31	18 - 7
65W-43861-00	15 - 40		30 - 24	61N-45587-00-15	21 - 4	682-82119-01	26 - 29	90101-12M65	13 - 1		18 - 25
65W-43862-00	15 - 41	6H3-44391-01	11 - 19	61N-45587-00-16	21 - 4	703-82119-00	25 - 26	90105-08M76	14 - 3	90201-08M00	13 - 29
65W-43865-00	15 - 19	65W-44514-00-4D	14 - 15	6L2-45611-00	21 - 42	6U0-82127-00	13 - 26	90105-10M12	22 - 5	90201-10M06	7 - 5
6H1-43866-00	15 - 31	63D-44526-00	14 - 16	664-45631-01	21 - 44	65W-82127-00	25 - 25	90109-06M50	17 - 3	90201-10M20	19 - 3
6H1-43867-00	15 - 32	65W-44551-10-4D	14 - 19	648-45633-00	21 - 46	65W-82127-10	14 - 26	90109-06M65	2 - 12	90201-10M63	19 - 8
65W-43869-00	15 - 5	65W-44555-00	14 - 20	648-45635-00	21 - 43	6H1-82148-00	13 - 25	90109-06M81	18 - 14	90201-10120	14 - 28
65W-43871-00	15 - 21	65W-44575-00	14 - 21	664-45941-01-EL	22 - 18	6G8-82150-00	26 - 14	90109-06M82	11 - 8	90201-12M07	16 - 5
6H1-43875-00	15 - 42	65W-44575-10	14 - 21	664-45943-01-EL	22 - 18	663-82151-00	26 - 15	90109-06M86	11 - 18	90201-12M16	26 - 27
62X-43878-00	15 - 62	65W-45111-00-4D	20 - 6	664-45945-00-EL	22 - 18	6G5-82152-00	26 - 16		16 - 12	90201-12426	12 - 3
65W-43879-00	15 - 13	65W-45111-10-4D	20 - 6	664-45947-01-EL	22 - 18	6A0-82317-00	26 - 24		18 - 16		13 - 3
65W-4388E-00	15 - 14	61N-45127-00	21 - 25	664-45949-02-EL	22 - 18	6G8-82370-20	25 - 9		26 - 20	90201-20417	21 - 48
65W-43880-00	15 - 2	65W-45128-00	20 - 12	664-45952-00-EL	22 - 18	65W-82504-00	25 - 24		27 - 3	90201-21M18	23 - 5
65W-43881-00	15 - 8		30 - 7	664-45954-00-EL	22 - 18	65W-8252V-00	25 - 3	90109-08M63	4 - 14	90201-22M03	12 - 23
65W-43882-00	15 - 7	65W-45151-00	20 - 9	664-45970-00-98	22 - 18	65W-8252V-10	25 - 7	90109-08M77	24 - 12		13 - 15
65W-43887-00	15 - 9	6L2-45214-00	22 - 9	664-45972-00-98	22 - 18	6H3-82540-00	27 - 1	90109-08M78	24 - 13	90201-43M00	16 - 30
65W-43888-00	15 - 28	6L2-45215-00	22 - 10	6L2-45987-01	22 - 13	6J8-82554-00	27 - 2	90109-08M87	12 - 30	90202-05M38	10 - 13
65W-43891-00	15 - 11	61N-45251-00	21 - 30	689-45997-00	22 - 14	682-82556-00	27 - 5	90110-10M02	13 - 33	90202-10M56	17 - 11
65W-43892-00	15 - 10	65W-45251-00	13 - 23	65W-46241-00	7 - 7	6H1-82563-10	26 - 17	90116-10M28	14 - 5	90202-12060	22 - 2
65W-44111-00	16 - 2	65W-45300-00-4D	21 - 1	663-48344-00	18 - 31	689-8257Y-00	27 - 6	90119-06M08	11 - 2	90202-43M57	16 - 32
65W-44116-00	18 - 15	65W-45300-10-4D	21 - 1	65W-48511-00	14 - 27	65W-82575-00	27 - 4	90119-06M48	22 - 8	90206-12M00	16 - 4
65W-44121-00	18 - 10	61N-45311-02-4D	21 - 2	6H3-48538-00	18 - 33	6E5-82587-00	26 - 18	90119-08M01	1 - 4	90206-12052	11 - 14
65W-44122-00	18 - 11	61N-45315-00	21 - 26	65W-61350-00	19 - 1	65W-82590-00	26 - 5	90119-08M39	24 - 11	90206-14M23	12 - 29
65W-44124-00	16 - 7		30 - 14	65W-61351-00	19 - 2	65W-82590-10	26 - 5	90119-08M79	20 - 7	90206-43M22	16 - 31
65W-44125-00	18 - 23	65W-45331-00-5B	21 - 23	65W-81337-00	23 - 12	65W-82590-30	26 - 5	90119-08M82	20 - 8	90209-10M26	17 - 13
65W-44142-00	18 - 21	688-45341-00	21 - 33	65W-81639-00	23 - 13	65W-82594-00	27 - 9	90119-09M00	2 - 15	90209-52M00	14 - 7
65W-44143-00	18 - 17	61N-45361-01-4D	21 - 51	65W-81800-00	24 - 1	65W-8339X-00	25 - 28	90119-10M04	14 - 24	90243-04007	12 - 9

NUMERICAL INDEX  
INDEX NUMERIQUE

PART NO. NO. PIECES	REF. NO.	PART NO. NO. PIECES	REF. NO.	PART NO. NO. PIECES	REF. NO.	PART NO. NO. PIECES	REF. NO.	PART NO. NO. PIECES	REF. NO.	PART NO. NO. PIECES	REF. NO.
90243-04007	12 - 14	90401-20M00	1 - 21	90506-20M37	12 - 46	93210-08006	15 - 50	93700-06M03	17 - 14	97595-06518	11 - 27
90249-07M32	12 - 53	90430-06014	2 - 11	90506-30M00	12 - 56	93210-09165	15 - 34	94701-00375	2 - 24	97595-06525	5 - 10
90249-07M33	12 - 55		28 - 8	91318-04025	15 - 38	93210-10M74	15 - 63	95380-03600	9 - 11		9 - 23
90249-10M31	12 - 42	90430-08020	21 - 29	91380-05025	23 - 7	93210-11073	15 - 53	95380-05600	9 - 13		18 - 26
90249-12M34	12 - 34		21 - 34	91380-05030	23 - 7	93210-11368	15 - 24	95380-06700	18 - 19		23 - 14
90249-12M38	13 - 20		30 - 16	91490-16010	16 - 17	93210-12MG9	7 - 13	95380-08600	12 - 17		25 - 18
90249-12M39	12 - 32		30 - 17	91490-20015	12 - 57		28 - 20		16 - 36	97595-06530	9 - 16
90249-18M35	13 - 32	90430-08143	2 - 21	91490-30022	22 - 17	93210-14515	7 - 14	95380-08700	24 - 14		25 - 11
90250-05010	21 - 45	90430-12072	22 - 3	91690-30016	12 - 48		28 - 21	95380-10600	12 - 4	97595-06540	25 - 23
90266-04M04	10 - 5		30 - 21	91690-30018	13 - 9	93210-16275	19 - 10	95380-10700	16 - 36	97595-06555	18 - 8
	10 - 7	90430-14M09	8 - 13	91690-30320	16 - 39	93210-18397	15 - 44	95380-12600	13 - 4	97595-06620	23 - 20
90269-02M09	16 - 21		30 - 4		18 - 12	93210-22164	21 - 8	95780-10300	16 - 35	97780-60520	10 - 3
90280-03024	21 - 36	90430-14115	1 - 15		18 - 22		30 - 10	95895-06016	16 - 3	97803-04010	6 - 5
	30 - 31		28 - 4	92903-06600	1 - 27	93210-24M79	2 - 23	95895-06030	26 - 26	97980-04114	6 - 28
90280-04M06	7 - 10	90445-09252	1 - 28	92903-10600	16 - 23		9 - 15	95895-06035	21 - 31		29 - 11
	28 - 18	90445-10M03	9 - 20	92990-06100	17 - 4		28 - 11	95895-10040	7 - 6	97980-05216	20 - 10
90340-08M04	21 - 28	90445-10M33	9 - 19	92990-06200	16 - 8		28 - 22	97013-06035	1 - 26	98580-04006	6 - 2
90340-14M06	1 - 14	90445-10M43	9 - 21	92990-06300	21 - 32	93210-26130	21 - 9	97075-06020	21 - 57	98580-04008	6 - 16
	8 - 12	90446-10M82	23 - 9	92990-06600	30 - 30		30 - 8	97075-08030	14 - 17	98780-05030	22 - 11
90386-07MA2	12 - 38	90446-10M86	16 - 27	92990-08100	12 - 18		30 - 9	97075-10070	14 - 22	99080-08600	12 - 41
90386-08032	16 - 25	90446-14M88	16 - 28	92990-08600	24 - 15	93210-33MH2	7 - 12	97080-08016	13 - 28		12 - 44
90386-10M99	12 - 40	90446-24M54	5 - 14	92990-14200	22 - 15		28 - 19	97085-06025	13 - 24	99530-08012	1 - 3
	12 - 43	90464-07M05	25 - 12	92995-06600	21 - 18	93210-43MJ0	14 - 10	97095-06010	18 - 9		2 - 14
90386-12MA0	12 - 33	90465-08M08	26 - 6		21 - 22	93210-45161	21 - 15	97095-06012	11 - 16		
	13 - 18		26 - 8		21 - 58		30 - 12	97095-06025	21 - 21		
90386-12MA2	11 - 13	90465-08M51	26 - 9	92995-08100	14 - 18		30 - 27	97095-06040	21 - 17		
90386-12M37	11 - 12	90465-11M10	9 - 26	92995-08200	14 - 13	93210-50768	15 - 29	97095-08014	2 - 20		
90386-12M98	12 - 28		23 - 11	92995-10600	12 - 2	93210-64ME7	21 - 53	97395-06040	30 - 29		
	13 - 19		26 - 4		13 - 34		30 - 18	97513-06516	8 - 6		
90386-14MA1	13 - 10		26 - 31		14 - 23	93210-65M50	21 - 56	97513-06520	2 - 10		
90386-18MA0	13 - 31	90465-11M52	5 - 16		22 - 6		30 - 20		2 - 19		
90386-18M44	13 - 30	90465-13M11	13 - 22	92995-12200	13 - 2	93306-00612	21 - 52	97513-06525	2 - 16		
90386-22M15	12 - 22	90465-13M18	9 - 27	93101-20M07	21 - 55	93315-220V7	21 - 6		8 - 4		
	13 - 14	90465-13M36	5 - 13		30 - 19	93315-22004	21 - 54	97513-06535	1 - 5		
90386-40MA0	16 - 29	90465-25M57	11 - 25	93101-22067	21 - 27	93332-000W5	21 - 3		7 - 15		
90386-40M99	16 - 33	90467-09M03	9 - 25		30 - 15	93332-00005	21 - 39	97575-06516	26 - 30		
90386-44M03	14 - 9	90467-10M04	9 - 24	93102-35M47	3 - 2	93430-10M00	12 - 35	97575-06520	26 - 22		
90386-44M99	14 - 11	90468-10005	18 - 29		28 - 13		13 - 21	97575-06525	8 - 14		
90386-52M02	14 - 8	90468-18008	16 - 9	93102-37M40	7 - 1	93450-09M01	2 - 4	97575-06545	20 - 5		
90387-05M11	17 - 8		18 - 20		28 - 17	93450-17129	3 - 11	97595-05512	2 - 9		
90387-06M08	18 - 4		18 - 30	93102-43M42	3 - 1	93501-08001	15 - 59	97595-05516	17 - 7		
90387-06M29	18 - 24		18 - 32		28 - 12	93604-10M03	21 - 24		23 - 8		
90387-06M69	11 - 4	90480-09M12	11 - 3	93104-16M01	20 - 2	93605-14143	7 - 4		26 - 12		
90387-07M05	12 - 39	90480-25161	25 - 10		30 - 5	93606-12019	8 - 10	97595-06512	26 - 3		
90387-07M29	12 - 54	90501-10065	21 - 47	93210-03478	15 - 51		22 - 4		27 - 7		
90387-08M29	12 - 15	90501-10326	6 - 8	93210-06ME6	21 - 20	93608-12M05	8 - 7	97595-06514	13 - 27		
90387-10M42	19 - 6	90501-23215	16 - 24		30 - 13	93700-06M03	12 - 20	97595-06516	26 - 7		
90387-12M04	12 - 31	90506-20M36	12 - 46	93210-064A5	15 - 26		13 - 12		26 - 11		

—MEMO—

A series of horizontal dotted lines for writing.

## This image shows a single sheet of white paper with horizontal ruling lines. The lines are evenly spaced and run across the width of the page. There are no margins, text, or other markings on the paper.



*COPYRIGHT : All rights reserved. No part of this publication  
may be reproduced without permission.*

*DROIT DE COPIE : TOUS DROITS RESERVES.*

*TOUTE PARTIE DE CETTE PUBLICATION NE  
PEUT ETRE REPRODUITE SANS AUTORISATION.*

**YAMAHA**

YAMAHA MOTOR CO., LTD.  
2500 SHINGAI IWATA SHIZUOKA JAPAN  
SERVICE INFORMATION DIV.

PRINTED ON RECYCLED PAPER

IMPRIME SUR PAPIER RECYCLE

Printed in Japan

First edition MAR., 1998

**TG**

IMPRIME AU JAPON

Première édition MARS., 1998

**TG**