

**PARTS
CATALOGUE
CATALOGUE
DE PIÈCES DETACHÉES**

F6AMH'09 (60N5)

F8CMH'09 (60R5)

F6AMH/F8CMH
PARTS CATALOGUE
©2008 by Yamaha Motor Co., Ltd.
1st edition, July 2008
All rights reserved.
Any reprinting or unauthorized use
without the written permission of
Yamaha Motor Co., Ltd.
is expressly prohibited.
Printed in Japan.

F6AMH/F8CMH
CATALOGUE DE PIECES DETACHEES
©2008 par Yamaha Motor Co., Ltd.
1^{re} édition, juillet 2008
Tous droits réservés
Toute réimpression ou utilisation
non autorisée sans la permission écrite
de la Yamaha Motor Co., Ltd.
est formellement interdite.
Imprimé au Japon

FOREWORD

This Parts Catalogue is related to the parts for the model(s) on the cover page. When you are ordering replacement parts, please refer to this Parts Catalogue and quote both part numbers and part names correctly.

1. Modifications or additions which have been made after the issue of the Parts Catalogue will be announced in the Parts News.
It is advisable that you make the necessary corrections to the Parts Catalogue according to the Parts News.

2. Abbreviations

The following abbreviations are used in this Parts Catalogue.

“UR” Use specified parts number.

“UN” Use as many as needed.

“AP” Alternate Parts

“LM” Locally Made (Parts need to be ordered locally)

“F#” Frame No. (Applicable machine No.)

“O/S” Over Size

3. The number of components for assembly

- Parts, which are to be supplied in an assembly, are listed with a dot (.) in front of the part name as shown below.
- The numeral appearing to the right of each component part indicates the quantity of parts for each assembly unit.

PART NO.	DESCRIPTION	Q'TY	REMARKS
2F5-83310-60	FRONT FLASHER LIGHT ASSY	2	
115-83311-60	.BULB (6V-18W)	1	

4. Applicable colours of graphics are represented in the “REMARKS” as shown below.

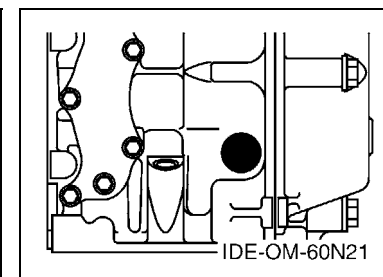
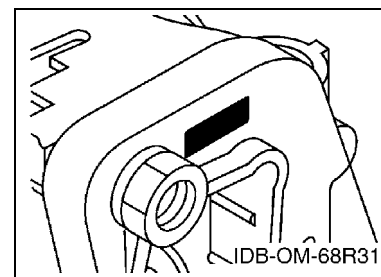
PART NO.	DESCRIPTION	Q'TY	REMARKS
2N4-24110-00-X5	FUEL TANK COMP.	2	MXR
3J1-24240-10	.GRAPHIC, FUEL TANK	1	FOR MXR

5. Note that the illustrations for reference in finding parts numbers are not to be used for assembling. When assembling, please use the applicable service manual.

6. The asterisk (*) before a reference number indicates modified items after the first edition.

7. Applicable Serial No.

Engine Serial No.



8. Applicable Engine Starting Serial No.

Model	Serial No.	Model	Serial No.
F6A	60N-1011936	F8C	60R-1020581

9. Applicable Colour Code

Abbreviation	Colour Name	Colour Code
DBNM2	DARK BLUISH GRAY METALLIC 2	004D

10. Quantity Column Information

Column No.	Name Of Q'ty Column	Applicable Model
1	60N5	F6AMH
2	60R5	F8CMH

AVANT-PROPOS

Ce catalogue de pièces détachées concerne les pièces pour le(s) modèle(s) indiqué(s) sur la page de couverture. Lorsque vous commandez des pièces de rechange, veuillez vous référer à ce catalogue de pièces détachées et indiquer clairement les numéros et les noms des pièces détachées.

1. Les modifications ou ajouts ayant été effectués après la parution du catalogue de pièces détachées seront décrits dans les Bulletins d'information concernant les pièces détachées.
Il est recommandé que vous apportiez les corrections nécessaires au catalogue des pièces détachées en vous référant aux Bulletins d'information.

2. Abréviations

Dans ce catalogue, les abréviations suivantes sont utilisées:

“UR” Utiliser le numéro de pièces spécifié.

“UN” Utiliser autant que nécessaire.

“AP” Pièces de substitution

“LM” Fabrication locale (les pièces doivent être commandées localement.)

“F#” N° de cadre (applicable au N° de série)

“O/S” Surdimensionné

3. Nombre de pièces d'un assemblage

- Les pièces fournies comme composants d'un assemblage sont précédées d'un point (.) de la manière indiquée ci-dessous.
- Le chiffre apparaissant à la droite de chaque composant indique la quantité de pièces pour chaque unité d'assemblage.

N° PIECES	DESCRIPTION	QTE	REMARQUES
2F5-83310-60	ENS. CLIGNOTANT AVANT	2	
115-83311-60	.AMPOULE (6V-18W)	1	

4. Les couleurs concernant les graphiques sont indiquées dans la colonne “REMARQUES”, comme indiqué ci-dessous.

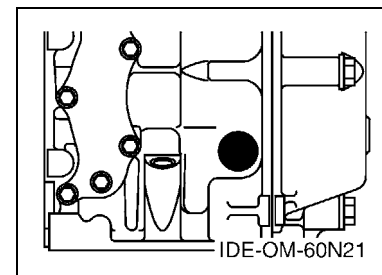
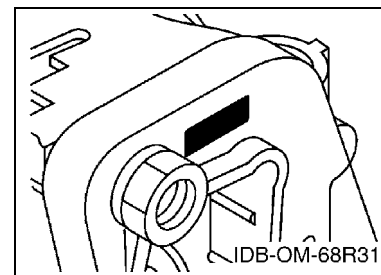
N° PIECES	DESCRIPTION	QTE	REMARQUES
2N4-24110-00-X5	RESERVOIR A ESSENCE.	2	MXR
3J1-24240-10	.GRAPHIQUE	1	POUR MXR

5. Veuillez noter que les illustrations sont indiquées à titre de référence pour trouver les numéros de pièces, non pour être utilisées lors de l'assemblage. Lors de l'assemblage, veuillez utiliser le manuel d'entretien adéquat.

6. L'astérisque (*) placé devant un numéro de référence indique des éléments qui ont été modifiés après la première édition.

7. N° de série applicable

N° de Série du moteur



8. N° de série initial du moteur applicable

Modèle	N° de série	Modèle	N° de série
F6A	60N-1011936	F8C	60R-1020581

9. Code couleur applicable

Abréviation	Nom de la couleur	Code couleur
DBNM2	DARK BLUISH GRAY METALLIC 2	004D

10. Informations relatives à la colonne Quantité

N° de la colonne	Nom de la colonne Qté	Modèle applicable
1	60N5	F6AMH
2	60R5	F8CMH

CONTENTS

TOP COWLING	1
CYLINDER & CRANKCASE 1	2
CRANKSHAFT & PISTON	3
CYLINDER & CRANKCASE 2	4
VALVE	5
INTAKE	6
CARBURETOR 1	7
CARBURETOR 2	8
OIL PUMP	9
FUEL	10
STARTER	12
GENERATOR	14
ELECTRICAL 1	15
ELECTRICAL 2	16
BOTTOM COWLING	17
STEERING	19
CONTROL	21
REMO CON ATTACHMENT	23
BRACKET 1	24
BRACKET 2	26
UPPER CASING	27
OIL PAN	28
LOWER CASING & DRIVE 1	29
LOWER CASING & DRIVE 2	32
FUEL TANK	33
STEERING GUIDE	34
OPTIONAL PARTS 1	35
OPTIONAL PARTS 2	37
REPAIR KIT 1	38
REPAIR KIT 2	39
REPAIR KIT 3	40
REPAIR KIT 4	41

INDEX

NUMERICAL INDEX	42
-----------------------	----

TABLE DES MATIERES

CAPOT SUPERIEUR	1
CYLINDRE & CARTER 1	2
VILEBREQUIN & PISTON	3
CYLINDRE & CARTER 2	4
SOUPAPE	5
ADMISSION	6
CARBURATEUR 1	7
CARBURATEUR 2	8
POMPE A HUILE	9
CARBURANT	10
DEMARREUR	12
GENERATRICE	14
PARTIE ELECTRIQUE 1	15
PARTIE ELECTRIQUE 2	16
CAPOT INFERIEUR	17
DIRECTION	19
COMMANDE	21
COMMANDE A DISTANCE	23
SUPPORT 1	24
SUPPORT 2	26
FOURREAU	27
VENTILATEUR D'HUILE	28
BOITIER D'HELICE TRANSMISSION1	29
BOITIER D'HELICE TRANSMISSION2	32
RESERVOIR A CARBURANT	33
FIXATION DE DIRECTION	34
PIECES OPTIONNELLES 1	35
PIECES OPTIONNELLES 2	37
KITS DE REPARATION 1	38
KITS DE REPARATION 2	39
KITS DE REPARATION 3	40
KITS DE REPARATION 4	41

INDEX

INDEX NUMERIQUE	42
-----------------------	----

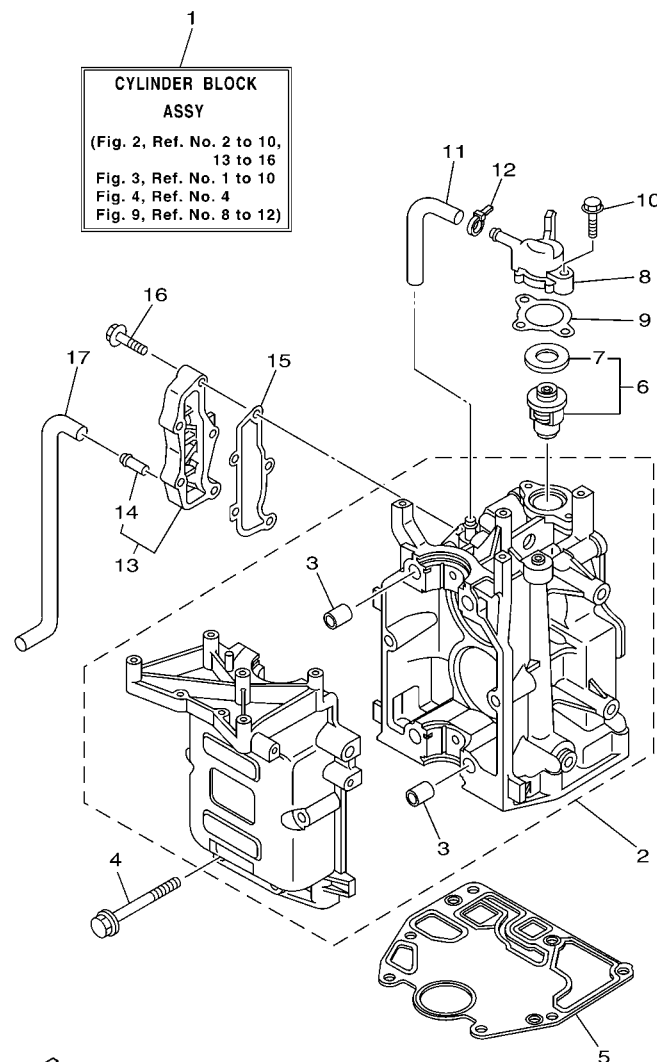


FIG. 2 CYLINDER & CRANKCASE 1 CYLINDRE & CARTER 1



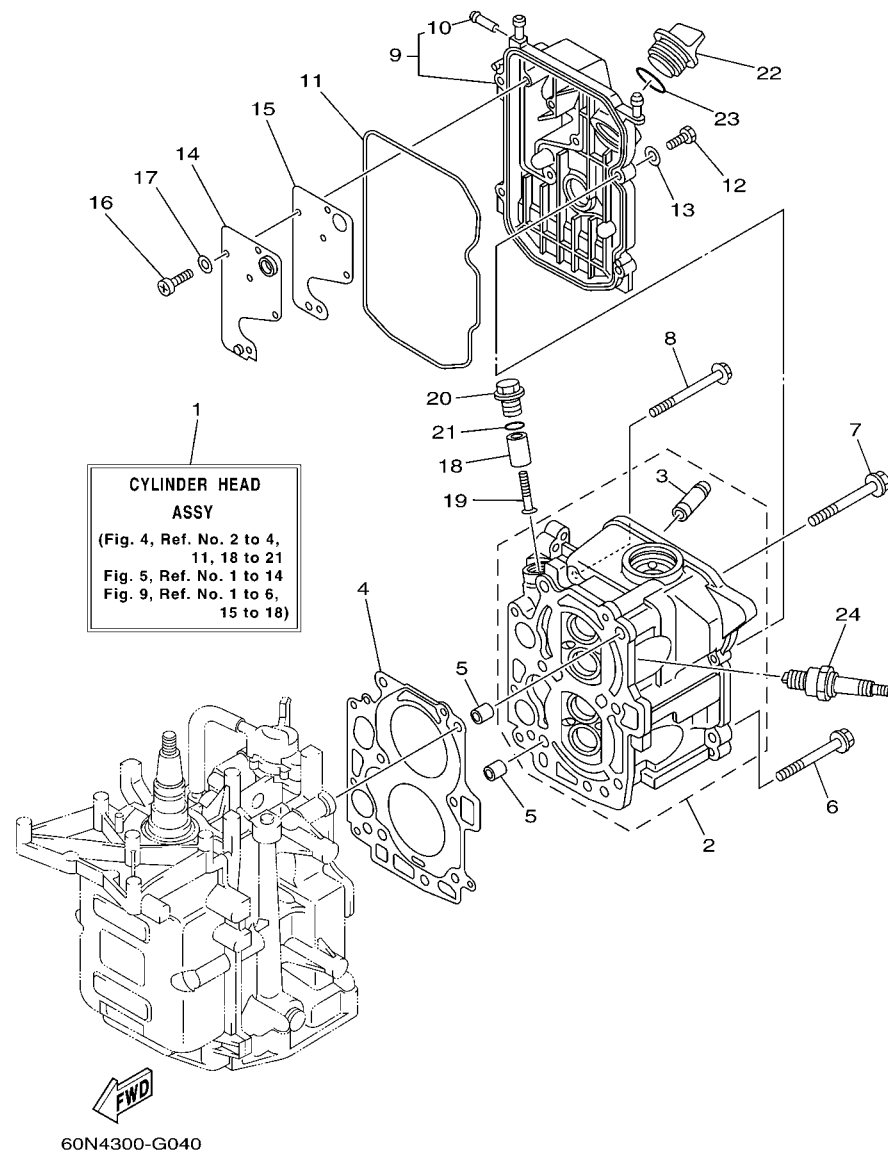
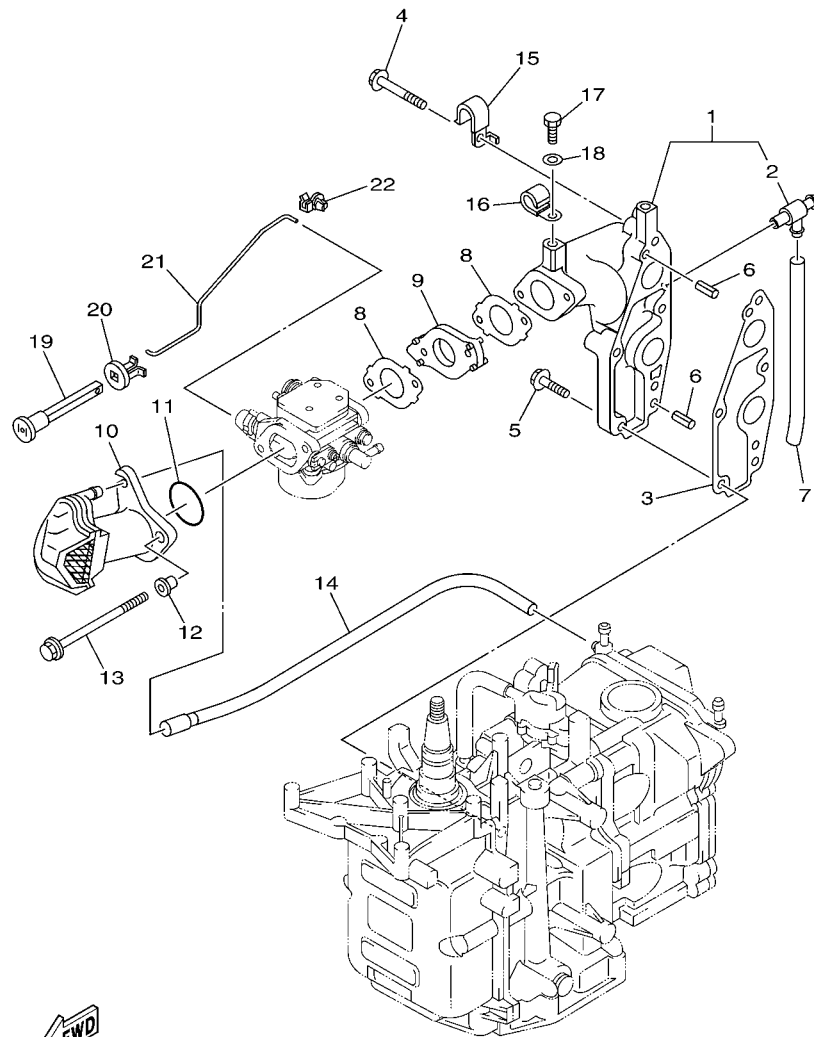


FIG. 4 CYLINDER & CRANKCASE 2 CYLINDRE & CARTER 2

REF. NO.	PART NO. N° PIECES	DESCRIPTION DESCRIPTION	60N5	60R5			REMARKS REMARQUES
1	60R-WE09A-01-1S	CYLINDER HEAD ASSY CULASSE (ENS.)	1	1			
2	60R-E1111-00-1S	HEAD, CYLINDER 1 CULASSE	1	1			
3	67D-11133-10	.GUIDE, VALVE 1 .GUIDE, SOUPAPE 1	4	4			
4	68T-11181-00	GASKET, CYLINDER HEAD 1 JOINT, DE CULASSE 1	1	1			
5	99510-10114	PIN, DOWEL GOUJON, D'ASSEMBLAGE	2	2			
6	90105-08M36	BOLT, FLANGE BOULON	2	2			
7	90105-08M78	BOLT, FLANGE BOULON	4	4			
8	90119-06049	BOLT, WITH WASHER BOULON, AVEC RONDELLE	3	3			
9	60R-E1191-00-1S	COVER, CYLINDER HEAD 1 COUVERCLE, CULASSE 1	1	1			
10	650-24378-00	.PIPE, JOINT 4 .DURITE RACCORDEMENT 3	1	1			
11	68T-11356-00	SEAL, CYLINDER 2 JOINT, SPY CYLINDRE	1	1			
12	97095-06020	BOLT BOULON	4	4			
13	92995-06600	WASHER RONDELLE	4	4			
14	68T-11168-00	COVER, BREATHER COUVERCLE, RENIFLARD	1	1			
15	68T-11169-A0	GASKET, BREATHER COVER JOINT, COUVERCLE DE RENIFLARD	1	1			
16	98507-04010	SCREW, PAN HEAD VIS, TETE TRONCONIQUE	5	5			
17	92907-04600	WASHER RONDELLE	5	5			
18	6G8-11325-00	ANODE ANODE	1	1			
19	97880-05025	SCREW, PAN HEAD VIS, TETE TRONCONIQUE	1	1			
20	6G8-11197-01	PLUG, BLIND PLOT, BORGNE	1	1			
21	93210-13M63	O-RING JOINT TORIQUE	1	1			
22	69M-E5363-00	PLUG, OIL PLOT, HUILE	1	1			
23	93210-24M79	O-RING JOINT TORIQUE	1	1			
24	94702-00274	PLUG, SPARK (NGK BR6HS-10) BOUGIE D'ALLUMAGE(NGK BR6HS-10)	2	2			

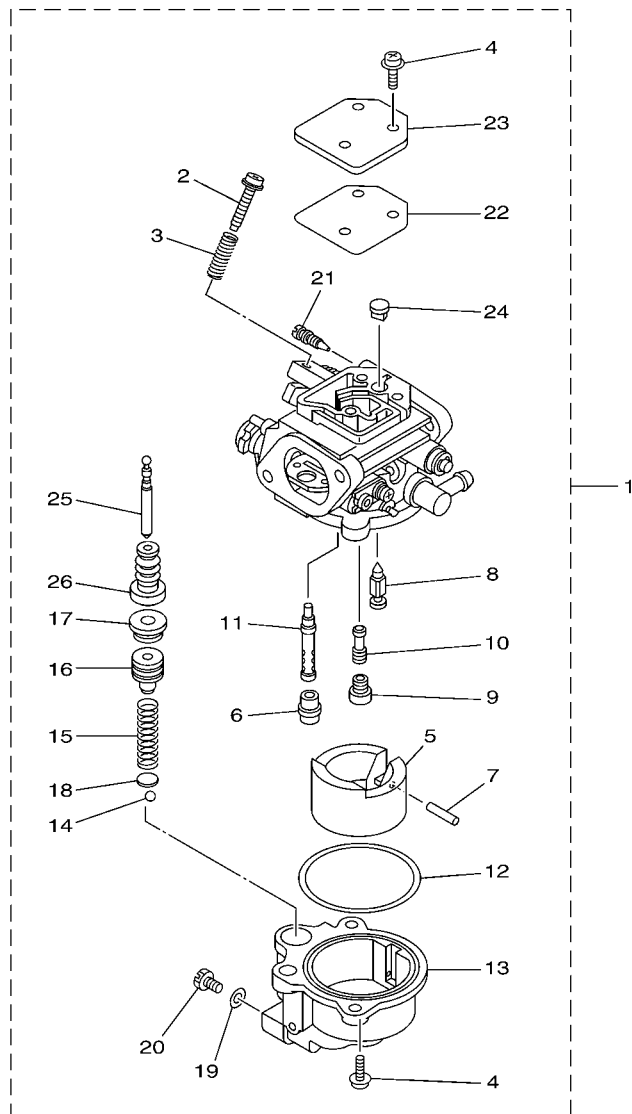


FWD
60N4300-G060

FIG. 6 INTAKE

ADMISSION

REF. NO.	PART NO. N° PIECES	DESCRIPTION DESCRIPTION	60N5	60R5			REMARKS REMARQUES
1	60R-E3641-20-1S	MANIFOLD 1 TUBULURE 1	1	1			FLUSHING KIT FLUSHING KIT
2	67F-12482-00	.PIPE 2 .DURITE 2	1	1			
3	68T-13645-00	GASKET, MANIFOLD 1 JOINT, TUBULURE 1	1	1			
4	90119-06MA5	BOLT, WITH WASHER BOULON, AVEC RONDELLE	3	3			
5	90119-06MA3	BOLT, WITH WASHER BOULON, AVEC RONDELLE	2	2			
6	91690-50014	PIN, SPRING AGRAFFE	2	2			FLUSHING KIT FLUSHING KIT
7	90445-09812	HOSE (L93) DURITE (L93)	1	1			
8	60R-E3646-A0	GASKET, MANIFOLD 2 JOINT, TUBULURE 2	2	2			
9	68T-14271-00	INSULATOR ISOLATEUR	1	1			
10	60R-E4440-00	SILENCER ASSY, INTAKE SIENCIEUX D'ADMISSION	1	1			
11	93210-31MJ5	O-RING JOINT TORIQUE	1	1			
12	90387-06M70	COLLAR COLLERETTE	2	2			
13	97595-06585	BOLT, WITH WASHER VIS HEXAGONAL AVC RONDELLE	2	2			
14	60R-E2483-00	PIPE 3 DURITE 3	1	1			
15	90465-08M99	CLAMP BRIDE	1	1			
16	90465-08M83	CLAMP BRIDE	1	1			FLUSHING KIT FLUSHING KIT
17	97095-06010	BOLT BOULON	1	1			FLUSHING KIT FLUSHING KIT
18	92995-06600	WASHER RONDELLE	1	1			FLUSHING KIT FLUSHING KIT
19	6H4-41271-01	KNOB, CHOKE BOUTON DE STARTER	1	1			
20	689-41273-00	GROMMET PASSE-FIL	1	1			
21	68T-41256-00	ROD, CHOKE 1 TRINGLE 1, STARTER	1	1			
22	6J8-41262-00	JOINT, CHOKE LEVER RACCORD, LEVIER DE STARTER	1	1			



6AU1300-G070

FIG. 7 CARBURETOR 1

CARBURATEUR 1

REF. NO.	PART NO. N° PIECES	DESCRIPTION DESCRIPTION	60N5	60R5			REMARKS REMARQUES
1	60N-14301-30	CARBURETOR ASSY 1 CARBURATEUR COMPLET 1	1				
2	6E5-14321-00	.SCREW, THROTTLE .VIS, ACCELERATEUR	1				
3	6J8-14334-00	.SPRING, THROTTLE .RESSORT, ACCELERATEUR	1				
4	97980-04112	.SCREW, WITH WASHER .VIS, AVEC RONDELLE	5				
5	6AU-14385-00	.FLOAT .FLOTTEUR	1				
6	67D-14966-00	.RUBBER CAP .CAOUTCHOUC CASQUILLO	1				
7	67D-14386-00	.PIN, FLOAT .AXE, FLOTTEUR	1				
8	68T-14546-00	.VALVE, NEEDLE .POINTEAU	1				
9	6AU-1492E-43	.JET, MAIN (#86) .GICLÉUR, PRINCIPAL (#86)	1				
10	6AU-1492F-20	.JET, AIR SLOW (#40) .GICLÉUR, AIR (#40)	1				
11	6AU-1492A-00	.NOZZLE, MAIN .PUITS D'AIGUILLE	1				
12	6AU-14984-00	.GASKET, FLOAT CHAMBER .JOINT, CUVE DE FLOTTEUR	1				
13	6AU-14982-00	.HOLDER .SUPPORT	1				
14	6AU-1431B-00	.BALL .BILLE	1				
15	6AU-14335-00	.SPRING, PLUNGER .RESSORT, PLONGEUR	1				
16	6AU-14371-00	.PLUNGER, STARTER .PLONGEUR, STARTER	1				
17	6AU-1431A-00	.GUIDE .GUIDE	1				
18	6AU-14918-00	.RING .BAGUE	1				
19	6J8-14959-00	.GASKET .JOINT	1				
20	66T-14991-00	.PLUG, DRAIN .BOUCHON DE VIDANGE	1				
21	68T-14323-20	.SCREW, AIR ADJUSTING .VIS DE DOSEUR D'AIR	1				
22	67D-14536-00	.GASKET .JOINT	1				
23	67D-14527-00	.PLATE .PLAQUE	1				
24	68T-14126-00	.PLUG .PLOT	1				
25	6AU-14379-00	.ROD, STARTER .TRINGLE, STARTER	1				
26	6AU-14373-00	.COVER, PLUNGER CAP .COUVERCLE DE PLONGEUR	1				



FIG. 8 CARBURETOR 2

CARBURATEUR 2

8



POMPE A HUILE

[illegible]

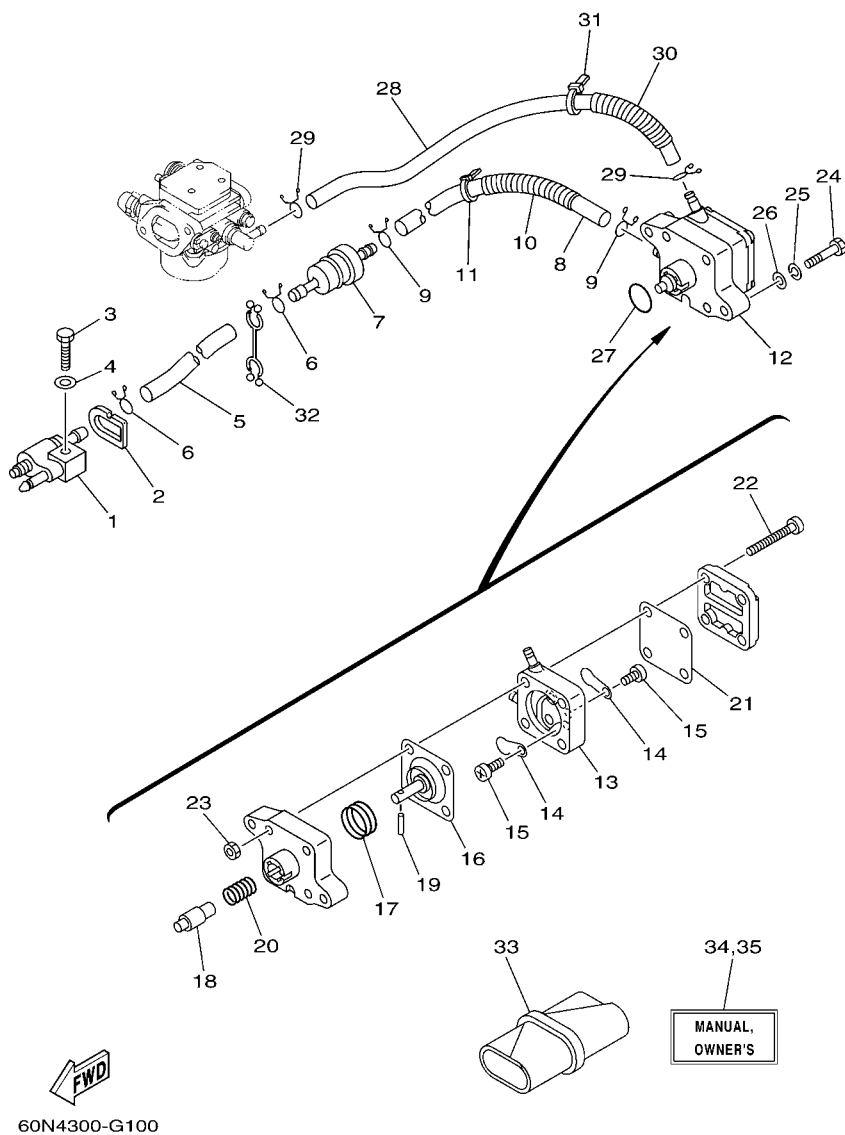
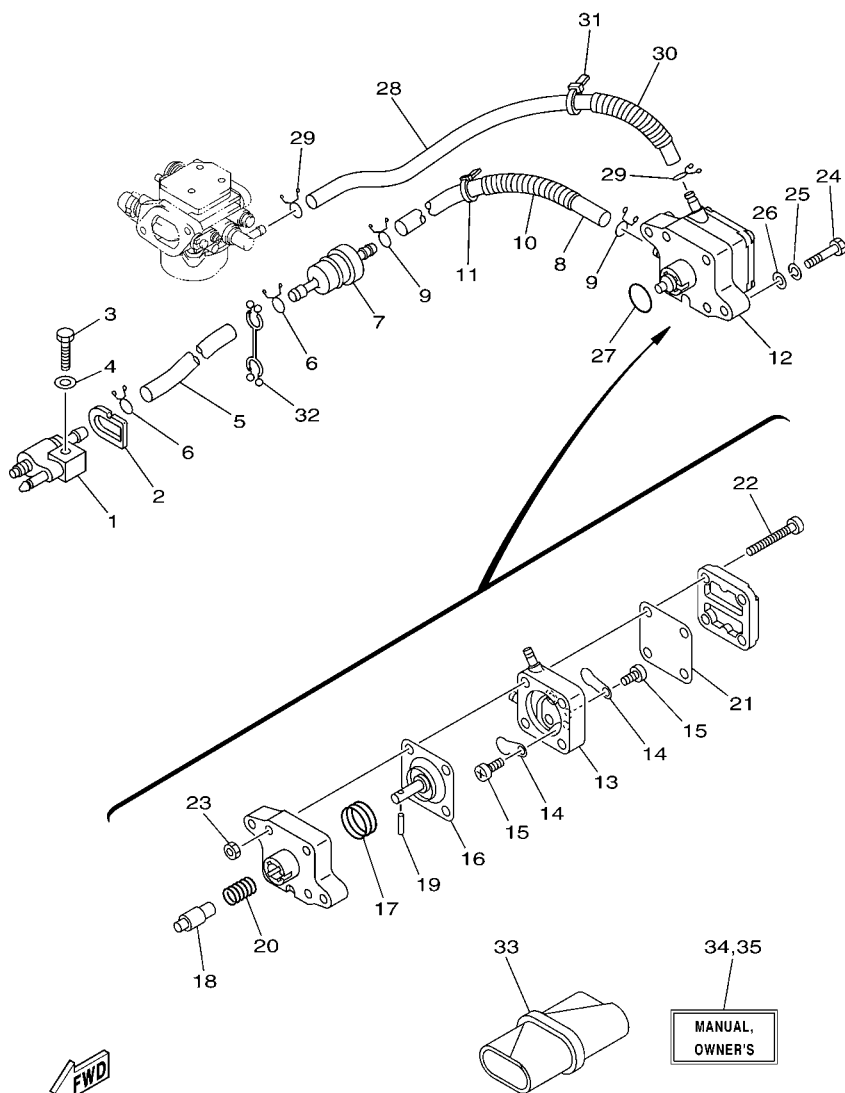


FIG. 10 FUEL

CARBURANT

REF. NO.	PART NO. N° PIECES	DESCRIPTION DESCRIPTION	60N5	60R5			REMARKS REMARQUES
1	6G1-24304-02	FUEL PIPE JOINT COMP. 1 DURITE RACCORDEMT. A ESSENCE	1	1			
2	60R-F4329-00	SEAL JOINT	1	1			
3	97095-06025	BOLT BOULON	1	1			
4	92995-06600	WASHER RONDELLE	1	1			
5	90445-10809	HOSE (L295) DURITE (L295)	1	1			
6	90467-09M09	CLIP JONC	2	2			
7	68T-24251-00	STRAINER 1 FILTRE 1	1	1			
8	90445-10811	HOSE (L170) DURITE (L170)	1	1			
9	90467-09M09	CLIP JONC	2	2			
10	90446-14M66	HOSE (L40) DURITE (L40)	1	1			
11	90465-11M10	CLAMP BRIDE	1	1			
12	68T-24410-01	FUEL PUMP ASSY POMPE A ESSENCE	1	1			
13	66M-24413-01	.BODY 2 .CORPS 2	1	1			
14	6A0-24421-01	.VALVE, CHECK .SOUPAPE, RETENUE	2	2			
15	6E7-14325-00	.SCREW, PAN HEAD .VIS TETE CONIQUE	2	2			
16	66M-24411-01	.DIAPHRAGM .DIAPHRAGME	1	1			
17	66M-24423-00	.SPRING, DIAPHRAGM .RESSORT, DIAPHRAGME	1	1			
18	66M-13131-00	.PLUNGER .PLONGEUR	1	1			
19	66M-24374-00	.PIN .GOUPILLE	1	1			
20	66M-24454-00	.SPRING .RESSORT	1	1			
21	66M-24471-01	.DIAPHRAGM .DIAPHRAGME	1	1			
22	66M-24444-00	.SCREW .VIS	4	4			
23	95380-04600	.NUT .ECROU	4	4			
24	97095-06030	BOLT BOULON	2	2			
25	92995-06100	WASHER, SPRING RONDELLE, GROUVER	2	2			
26	92995-06600	WASHER RONDELLE	2	2			
27	93210-20M65	O-RING JOINT TORIQUE	1	1			

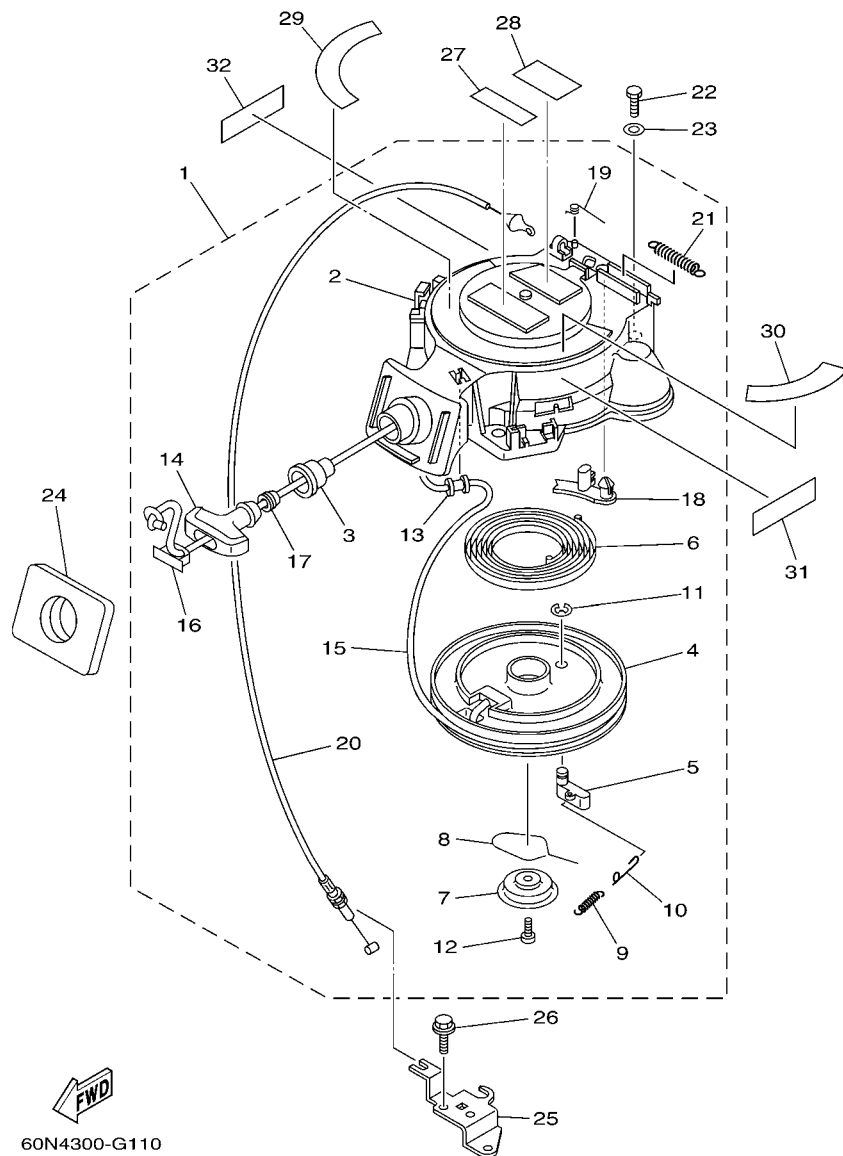


60N4300-G100

FIG. 10 FUEL

CARBURANT

REF. NO.	PART NO. N° PIECES	DESCRIPTION DESCRIPTION	60N5	60R5			REMARKS REMARQUES
28	90445-10810	HOSE (L280) DURITE (L280)	1	1			
29	90467-09M09	CLIP JONC	2	2			
30	90446-14M66	HOSE (L40) DURITE (L40)	1	1			
31	90465-11M10	CLAMP BRIDE	1	1			
32	90464-10M53	CLAMP BRIDE	1	1			
33	68T-28100-00	TOOL KIT TROUSSE A OUTILS	1	1			
34	60R-F8199-74-E0	MANUAL, OWNER'S MANUEL D'UTILISATION	1	1			UR (E) UR (E)
	60R-F8199-74-F0	MANUAL, OWNER'S MANUEL D'UTILISATION	1	1			UR (F) UR (F)
	60R-F8199-74-S0	MANUAL, OWNER'S MANUEL D'UTILISATION	1	1			UR (ES) UR (ES)
	60R-F8199-74-G0	MANUAL, OWNER'S MANUEL D'UTILISATION	1	1			UR (D) UR (D)
	60R-F8199-74-D0	MANUAL, OWNER'S MANUEL D'UTILISATION	1	1			UR (NL) UR (NL)
	60R-F8199-74-H0	MANUAL, OWNER'S MANUEL D'UTILISATION	1	1			UR (I) UR (I)
35	60R-F8199-84-K0	MANUAL, OWNER'S MANUEL D'UTILISATION	1	1			UR (DK) UR (DK)
	60R-F8199-84-R0	MANUAL, OWNER'S MANUEL D'UTILISATION	1	1			UR (GR) UR (GR)
	60R-F8199-84-P0	MANUAL, OWNER'S MANUEL D'UTILISATION	1	1			UR (P) UR (P)
	60R-F8199-84-N0	MANUAL, OWNER'S MANUEL D'UTILISATION	1	1			UR (N) UR (N)
	60R-F8199-84-M0	MANUAL, OWNER'S MANUEL D'UTILISATION	1	1			UR (S) UR (S)
	60R-F8199-84-L0	MANUAL, OWNER'S MANUEL D'UTILISATION	1	1			UR (SF) UR (SF)



*1: CUT FROM 50M ROLLS, PART NO. 90890-44373, CUTTING LENGTH 1.8M

*1: A PRELEVER SUR BOBINE 50M, REFERENCE 90890-44373, LONGUEUR DE COUPE 1.8M

FIG. 11 STARTER

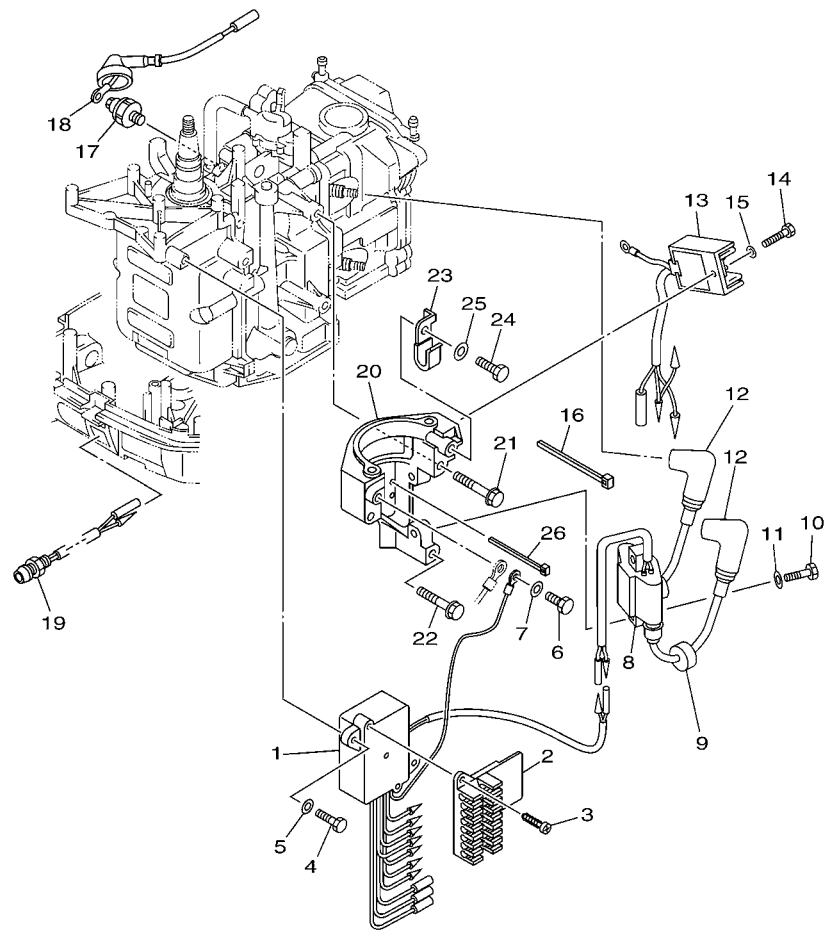
DEMARREUR

REF. NO.	PART NO. N° PIECES	DESCRIPTION DESCRIPTION	60N5	60R5			REMARKS REMARQUES
1	68T-15710-13	STARTER ASSY DEMARREUR COMPLET	1	1			
2	68T-15711-03	.CASE, STARTER .CARTER DE DEMARREUR	1	1			
3	68T-15795-00	.GUIDE, ROPE .GUIDE DE CABLE	1	1			
4	63V-15714-00	.DRUM, SHEAVE .TAMBOUR, POULIE	1	1			
5	63V-15741-00	.PAWL, DRIVE .CLIQUET, ENTRAINEMENT	1	1			
6	63V-15713-00	.SPRING, STARTER .RESSORT DE DEMARREUR	1	1			
7	68T-15716-00	.PLATE, DRIVE .PLAQUE, ENTRAINEMENT	1	1			
8	63V-15705-01	.SPRING, DRIVE PAWL .RESSORT DE CLIQUET	1	1			
9	63V-15767-01	.SPRING .RESSORT	1	1			
10	68T-15784-00	.SPRING, RETURN .RESSORT, RAPPEL	1	1			
11	63V-15744-00	.CIRCLIP .CIRCLIP	1	1			
12	68T-15793-00	.SCREW .VIS	1	1			
13	68T-15764-00	.COLLAR 1 .COLLERETTE 1	1	1			
14	6G1-15755-00	.HANDLE, STARTER .POIGNEE, DE DEMARREUR	1	1			
15	*	.WIRE, STARTER (L:1800MM) .CABLE DE DEMARREUR (L:1800MM)	1	1			*1 *1
16	6G1-15779-00	.COVER .COUVERCLE	1	1			
17	6A0-15789-00	.DAMPER .AMORTISSEUR	1	1			
18	68T-15794-00	.STOPPER .BUTEE	1	1			
19	66T-15734-00	.SPRING, RETURN .RESSORT, RAPPEL	1	1			
20	68T-15770-00	.CABLE COMP., STARTER STOP .CABLE, BUTEE DE DEMAR	1	1			
21	66T-15731-00	.SPRING, RETURN .RESSORT, RAPPEL	1	1			
22	97095-06020	BOLT BOULON	3	3			
23	92995-06600	WASHER RONDELLE	3	3			
24	68T-15762-00	SEAL, RUBBER 2 JOINT CAOUTCHOUC 2	1	1			
25	68T-15774-10	STAY 4 SUPPORT 4	1	1			
26	90109-06M86	BOLT BOULON	2	2			
27	6AH-81995-40	LABEL, WARNING ETIQUETTE, AVERTISSEMENT	1	1			



GENERATRICE

14




60N4300-G130

FIG. 13 ELECTRICAL 1

PARTIE ELECTRIQUE 1

REF. NO.	PART NO. N° PIECES	DESCRIPTION DESCRIPTION	60N5	60R5			REMARKS REMARQUES
1	68R-85540-00	C.D.I. UNIT ASSY BLOC C.D.I.	1				
	68T-85540-00	C.D.I. UNIT ASSY BLOC C.D.I.		1			
2	68T-82522-00	CLAMP, COUPLER BRIDE, DE CONNECTEUR	1	1			
3	97780-40512	SCREW, TAPPING VIS, TETE BOMBEE	2	2			
4	97095-06020	BOLT BOULON	2	2			
5	92995-06600	WASHER RONDELLE	2	2			
6	97095-06012	BOLT BOULON	1	1			
7	92995-06600	WASHER RONDELLE	1	1			
8	680-85570-02	IGNITION COIL ASSY BOBINE D'ALLUMAGE (ENS.)	1	1			
9	90480-25161	GROMMET PASSE-FIL	2	2			
10	97095-06025	BOLT BOULON	2	2			
11	92995-06600	WASHER RONDELLE	2	2			
12	6E3-82370-21	PLUG CAP ASSY ANTIPARASITE	2	2			
13	68T-81960-00	RECTIFIER & REGULATOR ASSY REDRESSEUR REGULATEUR CPLT	1	1			
14	97095-06012	BOLT BOULON	1	1			
15	92995-06600	WASHER RONDELLE	1	1			
16	90465-11M10	CLAMP BRIDE	1	1			
17	67F-82504-00	OIL PRESSURE SWITCH ASSY CONTACTEUR DE PRESSION D'HUILE	1	1			
18	68T-82127-10	WIRE, LEAD 2 FIL 2	1	1			
19	68T-85410-00	EMERGENCY SIGNAL LIGHT ASSY FEU DE DETRESSE	1	1			
20	68T-81822-01-94	BRACKET, STARTING MOTOR SUPPORT, DEMARREUR ELECTRIQUE	1	1			
21	90119-08046	BOLT, WITH WASHER BOULON, AVEC RONDELLE	2	2			
22	90119-08020	BOLT, WITH WASHER BOULON, AVEC RONDELLE	1	1			
23	90465-08M99	CLAMP BRIDE	1	1			
24	97095-06012	BOLT BOULON	1	1			
25	92995-06600	WASHER RONDELLE	1	1			
26	90465-11M10	CLAMP BRIDE	1	1			



PARTIE ELECTRIQUE 2

16

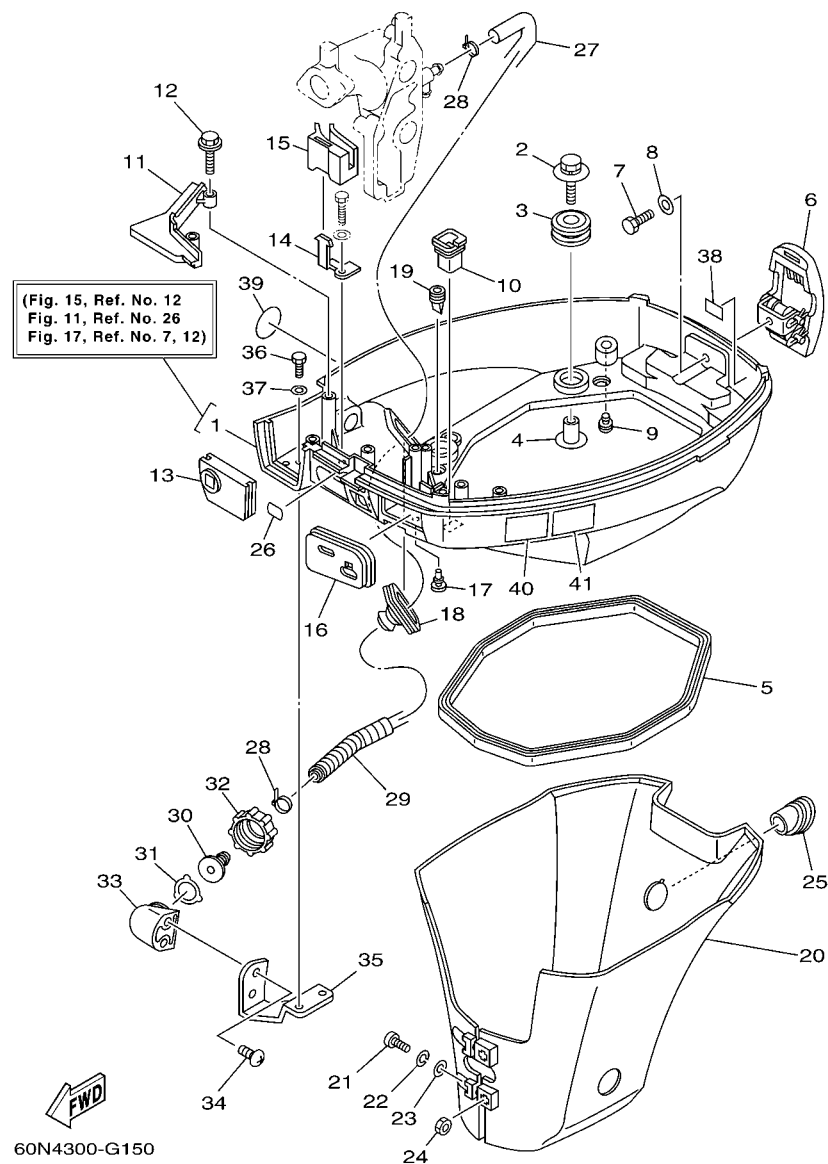


FIG. 15 BOTTOM COWLING

CAPOT INFERIEUR

REF. NO.	PART NO. N° PIECES	DESCRIPTION DESCRIPTION	60N5	60R5			REMARKS REMARQUES
1	60R-G2710-00-4D	BOTTOM COWLING ASSY ENS. EMBASE	1	1			WITH TAPPING BOLT WITH TAPPING BOLT
2	68F-85119-00	BOLT BOULON	4	4			
3	90480-21M82	GROMMET PASSE-FIL	4	4			
4	90387-06176	COLLAR COLLERETTE	4	4			
5	68T-42716-10	RUBBER, SEAL 1 JOINT EN CAOUTCHOUC 1	1	1			
6	68T-42801-00	COWLING CLAMP COMP. BRIDE DE CAPOT COMP.	1	1			
7	97095-06012	BOLT BOULON	1	1			
8	92995-06600	WASHER RONDELLE	1	1			
9	6H3-44391-01	NIPPLE, HOSE RACCORD D'ESSENCE	1	1			
10	682-42727-00	GROMMET PASSE-FIL	1	1			
11	68T-42738-00-4D	PLATE, FITTING ETRIER	1	1			
12	90109-06M81	BOLT BOULON	2	2			
13	68T-42725-00	GROMMET PASSE-FIL	1	1			
14	68T-26393-00	HOLDER SUPPORT	1	1			
15	68T-26367-00	PROTECTOR PROTECTEUR	1	1			
16	60R-G2724-00	GROMMET PASSE-FIL	1	1			
17	90480-06M19	GROMMET PASSE-FIL	1	1			
18	688-42726-10	GROMMET PASSE-FIL	1	1			FLUSHING KIT FLUSHING KIT
19	60S-G2717-00	RUBBER, SEAL 2 JOINT EN CAOUTCHOUC 2	2	2			
20	60R-G2741-00	APRON CAPOT LATERAL	1	1			
21	97885-06030	SCREW, PAN HEAD VIS, A ENCOCHE	2	2			
22	92995-06100	WASHER, SPRING RONDELLE, GROWER	2	2			
23	92995-06600	WASHER RONDELLE	2	2			
24	95380-06600	NUT, HEXAGON ECROU	2	2			
25	68T-42717-00	RUBBER, SEAL 2 JOINT EN CAOUTCHOUC 2	1	1			
26	60R-H4342-00	SEAT, EMBLEM SIEGE, EMBLEME	1	1			
27	60S-E2481-00	PIPE 1 DURITE 1	1	1			FLUSHING KIT FLUSHING KIT

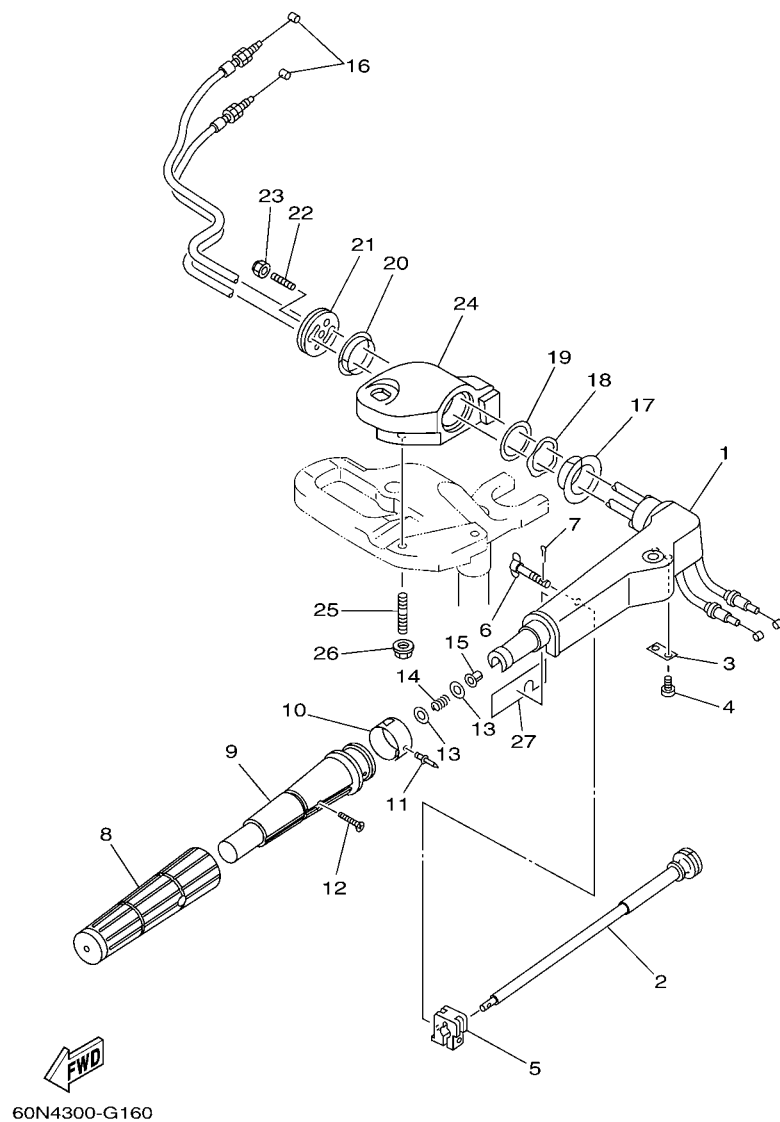


FIG. 16 STEERING

DIRECTION

REF. NO.	PART NO. N° PIECES	DESCRIPTION DESCRIPTION	60N5	60R5			REMARKS REMARQUES
1	60R-G2111-00-4D	HANDLE, STEERING POIGNEE	1	1			
2	6G1-42138-01	LEVER, THROTTLE LEVIER, ACCELERATEUR	1	1			
3	68D-G2159-00	STAY SUPPORT	1	1			
4	97885-05012	SCREW, PAN HEAD VIS, A ENCOCHE	2	2			
5	6G1-42126-00	FRICTION, STEERING HANDLE GRIP CUVETTE, POIGNEE DE DIRECTION	1	1			
6	6G1-42125-01	BOLT, FRICTION ADJUSTING BOULON	1	1			
7	91490-16010	PIN. COTTER GOUPILLE	1	1			
8	68D-G2177-10	RUBBER, HANDLE CAOUTCHOUC, POIGNEE	1	1			
9	68D-G2119-00	GRIP, STEERING HANDLE POIGNEE, BARRE FRANCHE	1	1			
10	60N-G2137-00	INDICATOR, THROTTLE INDICATEUR, ACCELERATION	1				
	60R-G2137-00	INDICATOR, THROTTLE INDICATEUR, ACCELERATION		1			
11	90269-02M09	RIVET RIVET	1	1			
12	90149-05M13	SCREW VIS	1	1			
13	90201-10M02	WASHER, PLATE RONDELLE, PLATE	2	2			
14	90501-23800	SPRING, COMPRESSION RESSORT, COMPRESSION	1	1			
15	90386-08032	BUSH DOUILLE	1	1			
16	60R-F6301-00	THROTTLE CABLE ASSY CABLE D'ACCELERATEUR	2	2			
17	90386-34M97	BUSH DOUILLE	1	1			
18	90206-36M21	WASHER, WAVE RONDELLE, ONDULEE	1	1			
19	90202-36M55	WASHER, PLATE RONDELLE, PLATE	1	1			
20	90386-33M96	BUSH DOUILLE	1	1			
21	68T-42131-01	COVER, HANDLE STEERING COUVERCLE	1	1			
22	90116-08015	BOLT, STUD GOIJON	1	1			
23	90185-08057	NUT, SELF-LOCKING ECROU, AUTO-BLOQUANT	1	1			
24	60R-G2121-00-4D	BRACKET SUPPORT	1	1			
25	90116-10040	BOLT, STUD GOIJON	2	2			
26	90179-10M33	NUT ECROU	2	2			

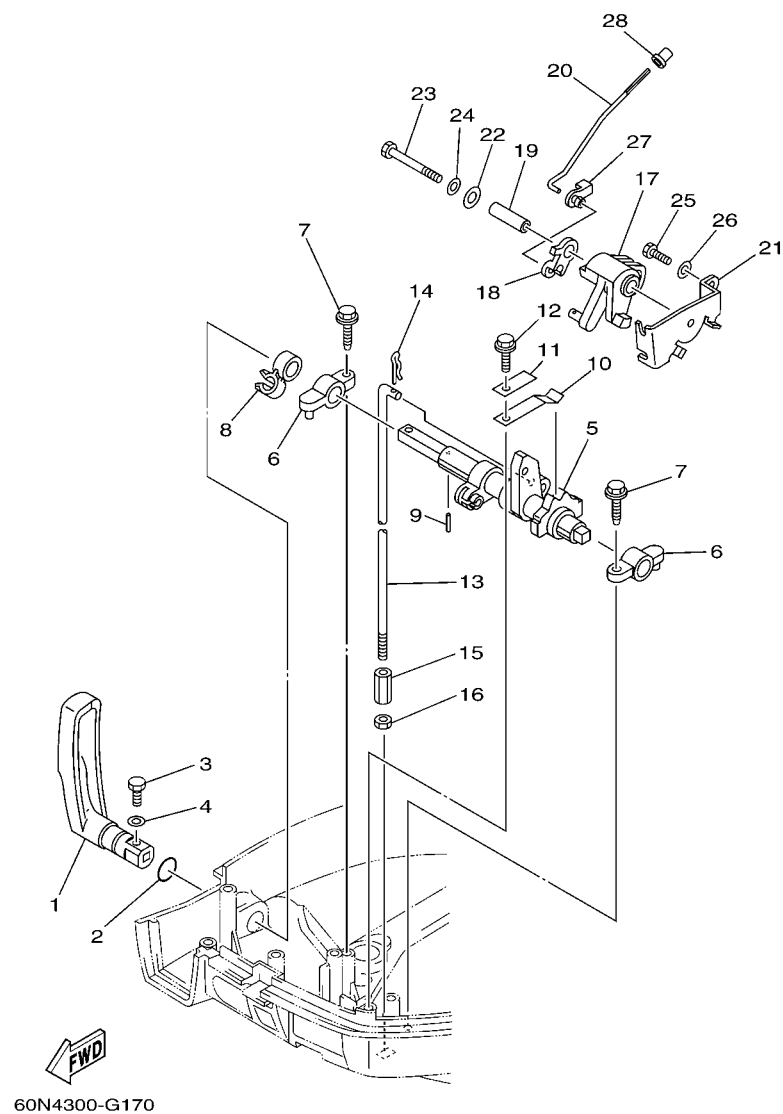


FIG. 17 CONTROL

REF. NO.	PART NO. N° PIECES	DESCRIPTION DESCRIPTION	60N5	60RS				REMARKS REMARQUES
1	60R-G4111-00	HANDLE, GEAR SHIFT POIGNEE, LEVIER D'EMBRAYAGE	1	1				
2	93210-12327	O-RING JOINT TORIQUE	1	1				
3	97095-05016	BOLT BOULON	1	1				
4	92995-05600	WASHER RONDELLE	1	1				
5	68T-44121-02	LEVER, SHIFT ROD LEVIER, TIGE D'INVERSION	1	1				
6	6G1-41662-01-94	BRACKET 2 SUPPORT 2	2	2				
7	90109-06M81	BOLT BOULON	2	2				
8	90464-10M60	CLAMP BRIDE	1	1				
9	91690-30014	PIN, SPRING AGRAFFE	1	1				
10	65W-44116-00	SPRING RESSORT	1	1				
11	66R-44114-00	STOPPER PLAQUETTE	1	1				
12	90109-06M86	BOLT BOULON	1	1				
13	60R-G4143-00	ROD, SHIFT TIGE D'EMBRAYAGE	1	1				S(17.1") S(17.1")
	60R-G4143-10	ROD, SHIFT TIGE D'EMBRAYAGE	1	1				L(22.1") L(22.1")
14	90468-18001	CLIP JONC	1	1				
15	90170-06015	NUT ECROU	1	1				
16	95380-06700	NUT ECROU	1	1				
17	68T-41638-00	PULLEY POULIE	1	1				
18	68R-41283-00	LEVER, FREE ACCEL. LEVIER	1					
	68T-41283-00	LEVER, FREE ACCEL. LEVIER		1				
19	90387-06M59	COLLAR COLLERETTE	1	1				
20	6AU-41211-00	LINK, ACCEL. BIELLETTTE, ACCELERATION	1					
	68T-41211-00	LINK, ACCEL. BIELLETTTE, ACCELERATION		1				
21	68T-14497-00	STAY, THROTTLE WIRE SUPPORT DE BOISSEAU	1	1				
22	90201-06M62	WASHER, PLATE RONDELLE, PLATE	1	1				
23	97095-06045	BOLT BOULON	1	1				
24	92995-06600	WASHER RONDELLE	1	1				

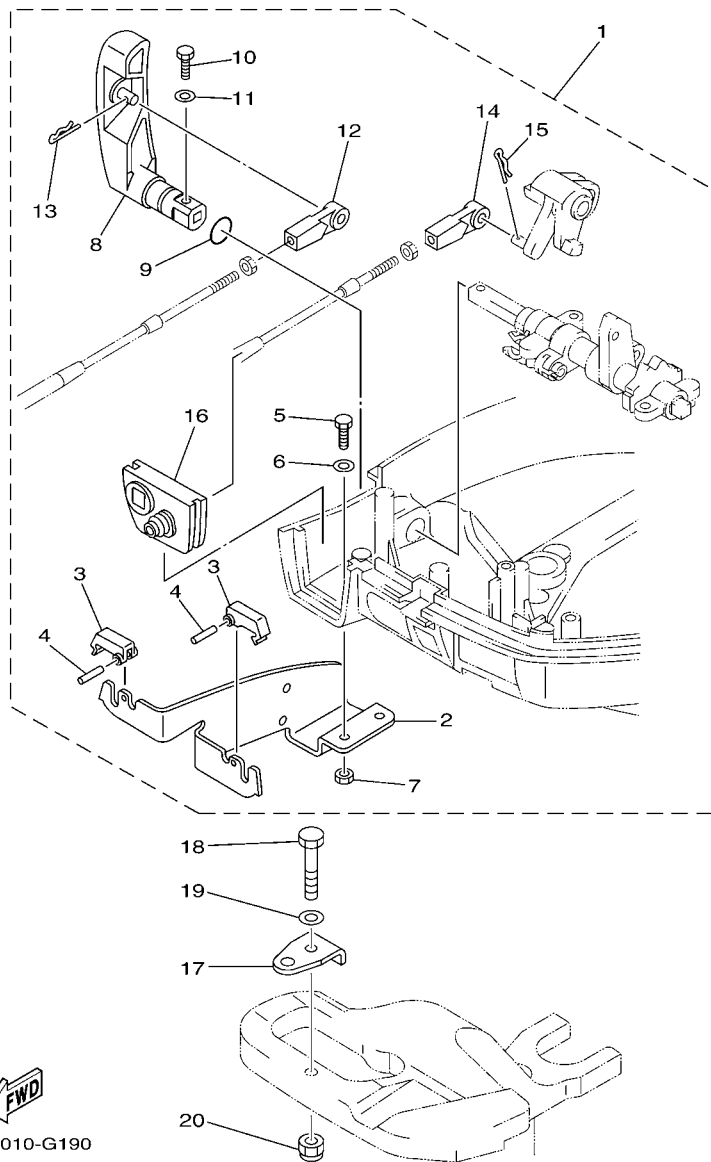
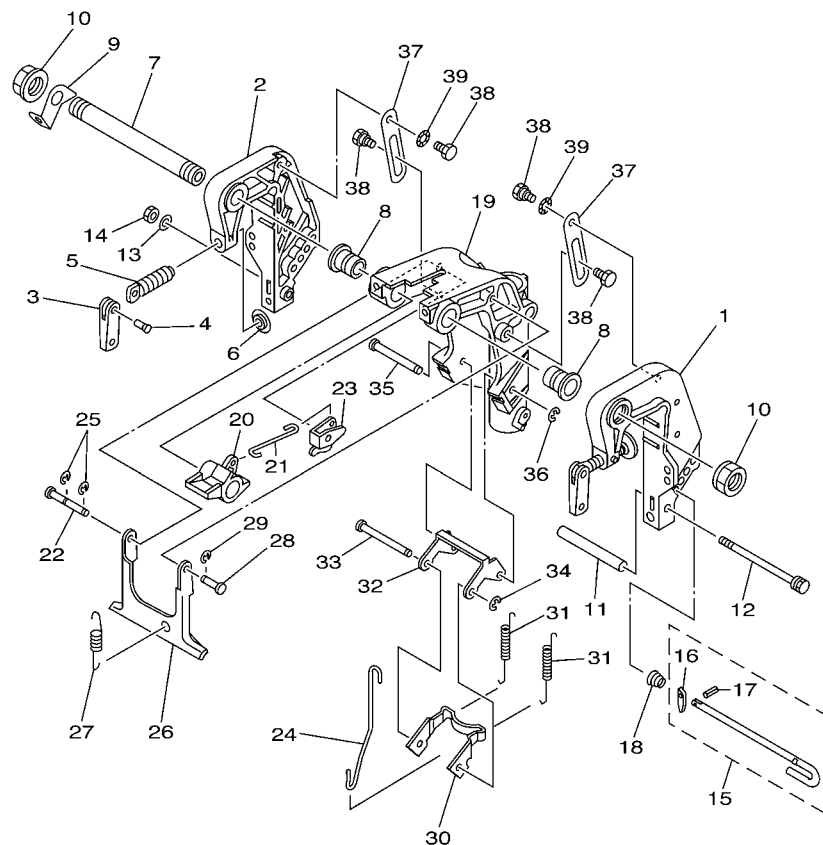


FIG. 18 REMO CON ATTACHMENT COMMANDE A DISTANCE

REF. NO.	PART NO. N° PIECES	DESCRIPTION DESCRIPTION	60N5	60R5			REMARKS REMARQUES
1	60R-G8501-00	REMOTE CONT. ATTACHMENT ASSY. COMMANDE A DISTANCE (KIT)	1	1			AP AP
2	68T-48531-00	.BRACKET, REMOTE CONTROL 1 .ETRIER 1, COMMANDE A DISTANCE	1	1			
3	682-48538-50	.CLAMP, CABLE 1 .COLLIER	2	2			
4	91690-30012	.PIN, SPRING .AGRAFFE	2	2			
5	97095-06012	.BOLT .BOULON	2	2			
6	92995-06600	.WASHER .RONDELLE	2	2			
7	95380-06600	.NUT, HEXAGON .ECROU	2	2			
8	60R-G4111-10	.HANDLE, GEAR SHIFT .POIGNEE, LEVIER D'EMBRAYAGE	1	1			
9	93210-12327	.O-RING .JOINT TORIQUE	1	1			
10	97095-05016	.BOLT .BOULON	1	1			
11	92995-05600	.WASHER .RONDELLE	1	1			
12	663-48344-00	.CABLE END, REMOTE CONTROL .CHAPE CABLE	1	1			
13	90468-18008	.CLIP .JONC	1	1			
14	663-48344-00	.CABLE END, REMOTE CONTROL .CHAPE CABLE	1	1			
15	90468-18008	.CLIP .JONC	1	1			
16	68T-42725-10	.GROMMET .PASSE-FIL	1	1			
17	63V-48511-01	HOOK, STEERING ATTACHE, DIRECTION		1			AP AP AP AP AP AP
18	97075-08035	BOLT BOULON		1			
19	92995-08600	WASHER RONDELLE		1			
20	90185-08057	NUT, SELF-LOCKING ECROU,AUTO-BLOQUANT		1			



FWD
68R3110-C200

FIG. 19 BRACKET 1

SUPPORT 1

REF. NO.	PART NO. N° PIECES	DESCRIPTION DESCRIPTION	60N5	60R5			REMARKS REMARQUES
1	60R-G3111-01-4D	BRACKET, CLAMP 1 PRESSE 1	1	1			
2	60R-G3112-01-4D	BRACKET, CLAMP 2 PRESSE 2	1	1			
3	6L8-G3118-01	HANDLE, TRANSOM CLAMP POIGNEE DE VIS DE PRESSE	2	2			
4	90243-04M01	PIN GOUPILLE	2	2			
5	6E7-43116-00	SCREW, TRANSOM CLAMP VIS DE PRESSE	2	2			
6	648-43114-01	PAD, TRANSOM CLAMP RONDELLE D'APPUI	2	2			
7	63V-43131-10	BOLT, CLAMP BRACKET (L:283MM) BOULON, PRESSE (L:283MM)	1	1			FOR RIDE GUIDE FOR RIDE GUIDE
8	90386-22MA4	BUSH DOUILLE	2	2			
9	66R-43113-00	PLATE, CLAMP BRACKET PLAQUETTE, PRESSE	1	1			
10	90185-22043	NUT, SELF-LOCKING ECROU, AUTO-BLOQUANT	2	2			
11	90387-06M13	COLLAR COLLERETTE	1	1			
12	90101-06M18	BOLT BOULON	1	1			
13	92990-06600	WASHER, PLATE RONDELLE, PLATE	1	1			
14	95380-06700	NUT ECROU	1	1			
15	6L2-43160-01	TILT ROD ASSY BROCHE D'INCLINAISON (ENS.)	1	1			
16	689-43165-00	PLATE, TILT LOCK TAQUET, BROCHE INCLINAISON	1	1			
17	91690-30008	PIN, SPRING AGRAFFE	1	1			
18	90502-10M07	SPRING, CONICAL RESSORT, CONIQUE	1	1			
19	60R-G3311-00-4D	BRACKET, SWIVEL 1 SUPPORT, PIVOT 1	1	1			S(17.1") S(17.1")
	60R-G3311-10-4D	BRACKET, SWIVEL 1 SUPPORT, PIVOT 1	1	1			L(22.1") L(22.1")
20	60R-G3631-00	LEVER, TILT LEVIER, INCLINAISON	1	1			
21	60R-G3616-00	ROD, TILT LOCK TIGE	1	1			
22	68T-43646-00	SHAFT, LEVER AXE, LEIVER	1	1			
23	68T-43641-00	LEVER, TILT LEVIER, INCLINAISON	1	1			
24	68T-43617-00	ROD, TILT LOCK TIGE	1	1			
25	99080-05600	CIRCLIP CIRCLIP	2	2			
26	68T-43350-00	RECEIVER ASSY RECEIVER ASSY	1	1			



FOURREAU

27

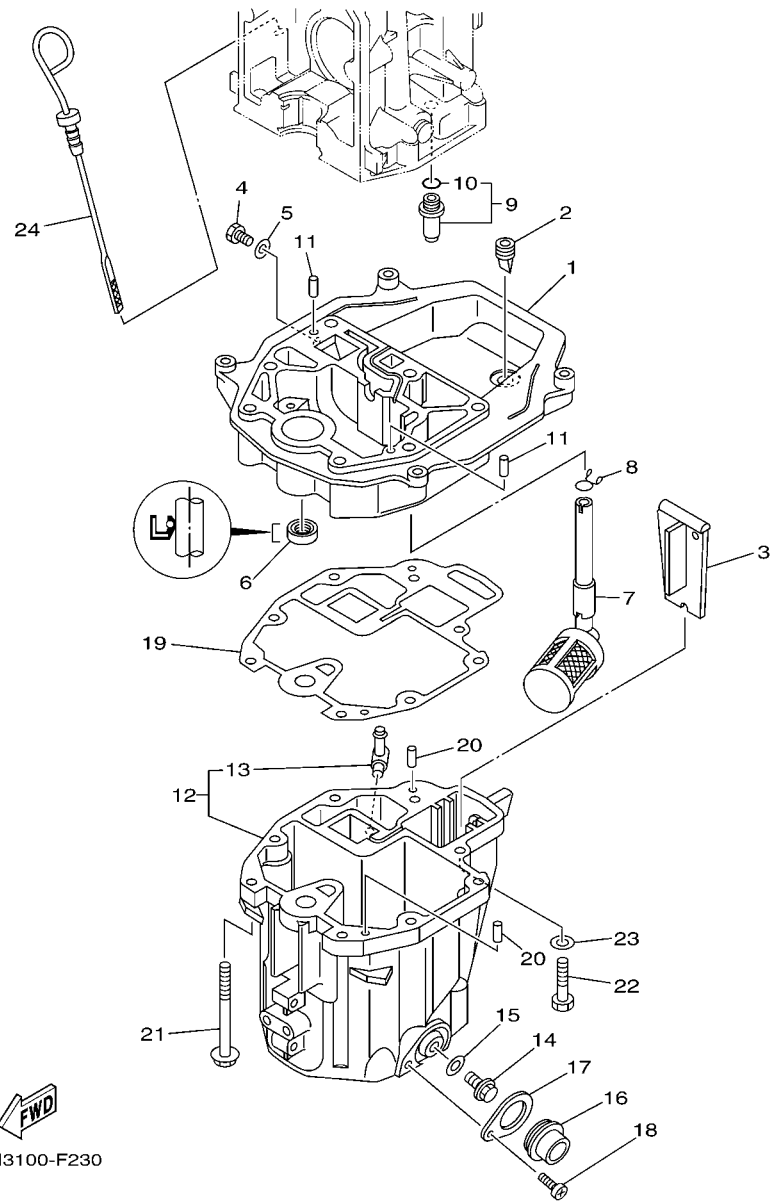


FIG. 22 OIL PAN

VENTILATEUR D'HUILE

REF. NO.	PART NO. N° PIECES	DESCRIPTION DESCRIPTION	60N5	60R5			REMARKS REMARQUES
1	60R-G1137-00-94	GUIDE, EXHAUST COLLECTEUR D'ECHAPPEMENT	1	1			
2	60S-G2717-00	RUBBER, SEAL 2 JOINT EN CAOUTCHOUC 2	1	1			
3	60R-G5181-00	PLATE PLAQUETTE	1	1			
4	97095-08014	BOLT BOULON	1	1			
5	90430-08800	GASKET JOINT	1	1			
6	93101-12M70	OIL SEAL JOINT SPY	1	1			
7	68T-13421-01	STRAINER 2 FILTRE 2	1	1			
8	90467-11M08	CLIP JONC	1	1			
9	6G8-11575-00	RELIEF VALVE ASSY SOUPAPE DE RENTREE D'AIR	1	1			
10	93210-12M62	O-RING JOINT TORIQUE	1	1			
11	93606-19M23	PIN, DOWEL GOUPILLE	2	2			
12	60R-E5311-00-5B	OIL PAN VENTILATEUR D'HUILE	1	1			
13	6H1-11372-00	NIPPLE, HOSE RACCORD, TUYAU	1	1			
14	90340-10M10	PLUG, STRAIGHT SCREW PLOT, FILETE DROIT	1	1			
15	90430-10M11	GASKET JOINT	1	1			
16	60R-E5316-00	DAMPER 1 AMORTISSEUR 1	1	1			
17	68T-15317-00	SPACER, ENGINE MOUNT ENTRETOISE DE SUPPORT	1	1			
18	97885-05008	SCREW, PAN HEAD VIS, A ENCOCHE	1	1			
19	68T-13475-00	GASKET JOINT	1	1			
20	93604-12M07	PIN, DOWEL CLAVETTE	2	2			
21	90119-08005	BOLT, WITH WASHER BOULON, AVEC RONDELLE	6	6			
22	97075-08030	BOLT BOULON	2	2			
23	92995-08600	WASHER RONDELLE	2	2			
24	68T-15362-00	PLUG, OIL LEVEL PLOT, NIVEAU D'HUILE	1	1			

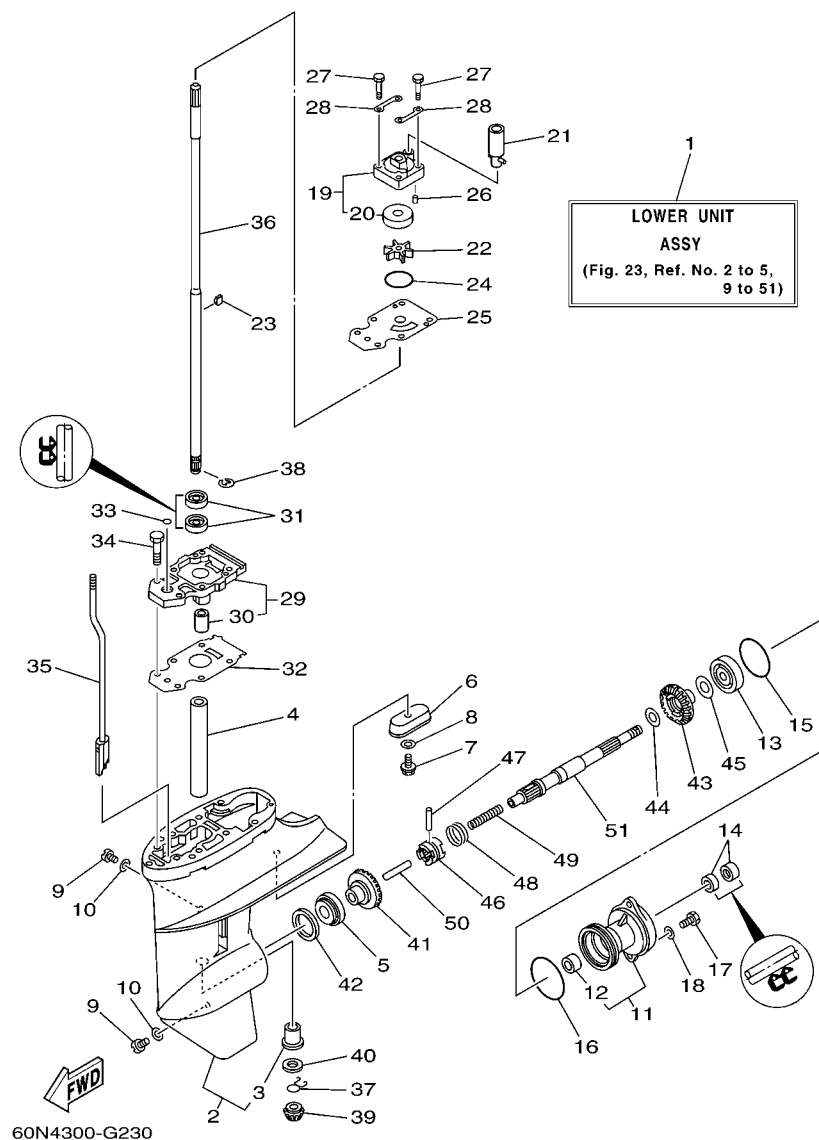


FIG. 23 LOWER CASING & DRIVE 1

BOITIER D'HELICE TRANSMISSION1

REF. NO.	PART NO. N° PIECES	DESCRIPTION DESCRIPTION	60N5	60R5		REMARKS REMARQUES
1	60R-G5300-00-4D	LOWER UNIT ASSY UNITE INFERIEURE (ENS.)	1	1		S(17.1") S(17.1")
	60R-G5300-10-4D	LOWER UNIT ASSY UNITE INFERIEURE (ENS.)	1	1		L(22.1") L(22.1")
2	60R-G5311-00-4D	CASING, LOWER BOITIER D'HELICE	1	1		
3	6G1-45317-09	.BUSHING, DRIVE SHAFT .DOUILLE, ARBRE MOTEUR	1	1		
4	90387-14M49	COLLAR COLLERETTE	1	1		
5	93306-004YH	BEARING ROULEMENT	1	1		
6	68T-45251-00	ANODE ANODE	1	1		
7	95895-06016	BOLT, FLANGE BOULON	1	1		
8	92990-06300	WASHER, INTERNAL TOOTH RONDELLE, DENTURE INTERNE	1	1		
9	90340-08002	PLUG, STRAIGHT SCREW PLOT, FILETE DROIT	2	2		
10	90430-08020	GASKET JOINT	2	2		
11	6N0-G5361-00-4D	CAP, LOWER CASING COUVERCLE, BOITIER D'HELICE	1	1		
12	6G1-45362-09	.BUSHING .COUSSINET	1	1		
13	93306-004YH	BEARING ROULEMENT	1	1		
14	93101-15074	OIL SEAL JOINT SPY	2	2		
15	93210-49046	O-RING JOINT TORIQUE	1	1		
16	93210-53M08	O-RING JOINT TORIQUE	1	1		
17	97095-06016	BOLT BOULON	2	2		
18	92995-06600	WASHER RONDELLE	2	2		
19	63V-44301-00	WATER PUMP HOUSING COMP. CARTER, POMPE A EAU (ENS)	1	1		
20	63V-44322-00	.INSERT, CARTRIDGE .CUVETTE	1	1		
21	68T-44366-00	DAMPER, WATER SEAL JOINT, TUBE D'EAU	1	1		
22	68T-44352-00	IMPELLER TURBINE	1	1		
23	664-44338-00	KEY, WOODRUFF CLAVETTE, VOLANT	1	1		
24	93210-44398	O-RING JOINT TORIQUE	1	1		
25	68T-44323-00	OUTER PLATE, CARTRIDGE PLAQUE EXTERIEURE	1	1		
26	93604-12M07	PIN, DOWEL CLAVETTE	2	2		

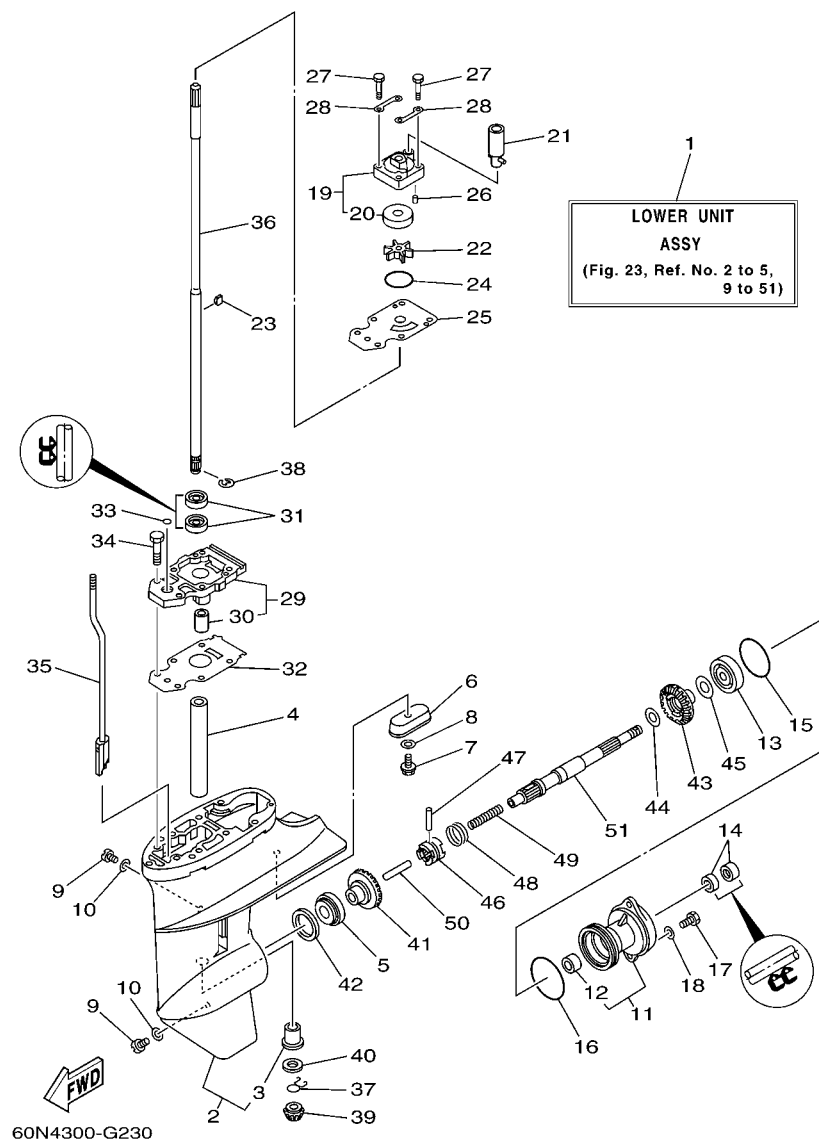


FIG. 23 LOWER CASING & DRIVE 1 BOITIER D'HELICE TRANSMISSION1

REF. NO.	PART NO. N° PIECES	DESCRIPTION DESCRIPTION	60N5	60R5			REMARKS REMARQUES
27	97080-08045	BOLT BOULON	4	4			
28	63V-44328-00	PLATE PLAQUETTE	2	2			
29	60R-G5331-00-5B	HOUSING, BEARING FLASQUE, ROULEMENT	1	1			
30	6G1-45316-09	.BUSHING, DRIVE SHAFT .DOUILLE, ARBRE MOTEUR	1	1			
31	93101-11M23	OIL SEAL JOINT SPY	2	2			
32	68T-45315-A0	PACKING, LOWER CASING JOINT, BOITIER D'HELICE	1	1			
33	93210-06ME6	O-RING JOINT TORIQUE	1	1			
34	97080-08025	BOLT BOULON	2	2			
35	60R-G4150-00	SHIFT CAM ASSY CAME D'INVERSION	1	1			
36	60R-G5511-00	SHAFT, DRIVE ARBRE, MOTEUR	1	1			S(17.1") S(17.1")
	60R-G5511-10	SHAFT, DRIVE ARBRE, MOTEUR	1	1			L(22.1") L(22.1")
37	90467-09M05	CLIP JONC	1	1			
38	99001-07600	CIRCLIP CIRCLIP	1	1			
39	6N0-G5551-A0	PINION (13T) PIGNON D'ATTAQUE (13D)	1	1			
40	6G1-45533-00	SHIM (T:1.90MM) CALE (T:1.90MM)	1	1			UR UR
	6G1-45533-10	SHIM (T:2.00MM) CALE (T:2.00MM)	1	1			UR UR
	6G1-45533-20	SHIM (T:2.10MM) CALE (T:2.10MM)	1	1			UR UR
	6G1-45533-30	SHIM (T:2.20MM) CALE (T:2.20MM)	1	1			UR UR
41	60R-G5560-00	GEAR 1 (27T) PIGNON 1 (27T)	1	1			
42	664-45587-01	SHIM (T:0.10MM) CALE (T:0.10MM)	1	1			UR UR
	664-45587-10	SHIM (T:0.12MM) CALE (T:0.12MM)	1	1			UR UR
	664-45587-20	SHIM (T:0.15MM) CALE (T:0.15MM)	1	1			UR UR
	664-45587-30	SHIM (T:0.18MM) CALE (T:0.18MM)	1	1			UR UR
	664-45587-40	SHIM (T:0.30MM) CALE (T:0.30MM)	1	1			UR UR
	664-45587-50	SHIM (T:0.40MM) CALE (T:0.40MM)	1	1			UR UR
	664-45587-60	SHIM (T:0.50MM) CALE (T:0.50MM)	1	1			UR UR
43	60R-G5571-00	GEAR 2 (27T) PIGNON 2 (27T)	1	1			

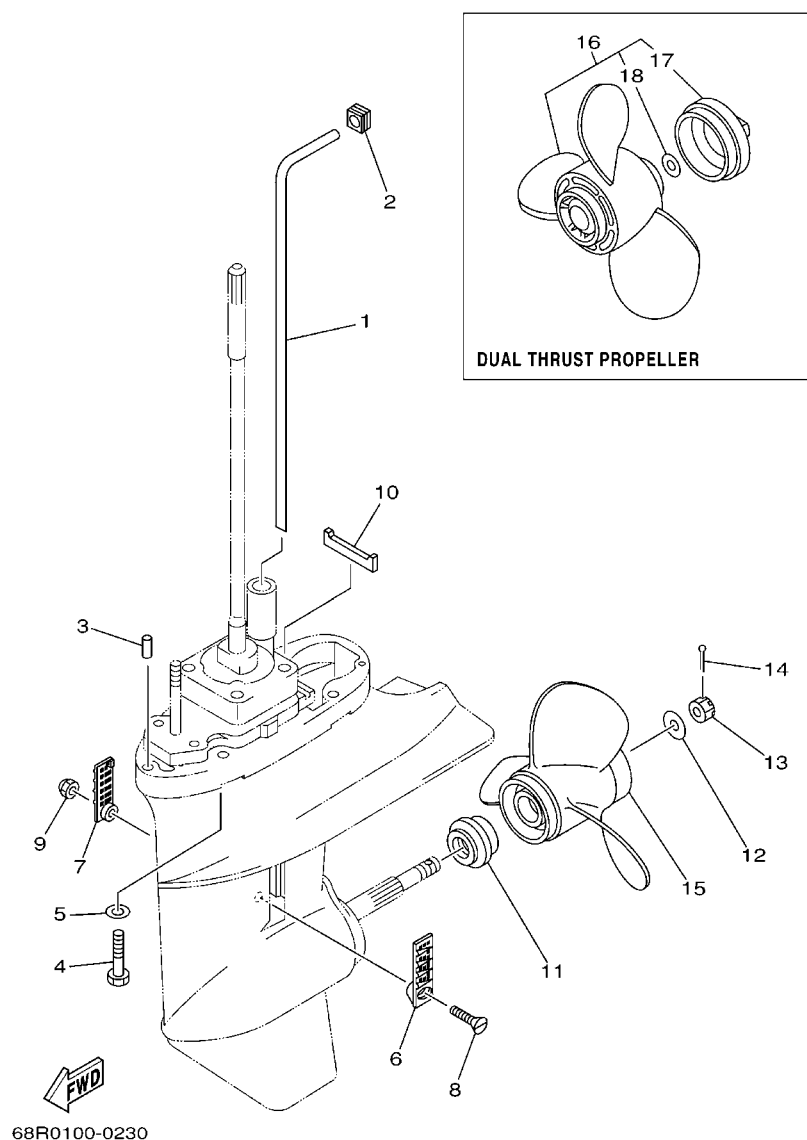


FIG. 24 LOWER CASING & DRIVE 2 BOITIER D'HELICE TRANSMISSION2

REF. NO.	PART NO. N° PIECES	DESCRIPTION DESCRIPTION	60N5	60R5			REMARKS REMARQUES
1	68T-44361-00	TUBE, WATER TUBE D'EAU	1	1			S(17.1") S(17.1")
	68T-44361-10	TUBE, WATER TUBE D'EAU	1	1			L(22.1") L(22.1")
2	63V-44365-10	DAMPER, WATER SEAL JOINT, TUBE D'EAU	1	1			
3	93604-12M07	PIN, DOWEL CLAVETTE	2	2			
4	97075-08035	BOLT BOULON	4	4			
5	92995-08600	WASHER RONDELLE	4	4			
6	6G1-45214-00	COVER, WATER INLET 1 GRILLE, ENTREE D'EAU 1	1	1			
7	6G1-45215-00	COVER, WATER INLET 2 GRILLE, ENTREE D'EAU 2	1	1			
8	90152-05M03	SCREW, COUNTERSUNK VIS, TETE NOYEE	1	1			
9	90185-05002	NUT, NYLON ECROU, AUTO-BLOQUANT	1	1			
10	63V-45375-00	DAMPER, SEAL BOURRELET, CAOUTCHOUC	1	1			
11	6N0-G5987-10	SPACER ENTRETOISE	1	1			
12	90201-10M01	WASHER, PLATE RONDELLE, PLATE	1	1			
13	90171-10M01	NUT, CASTLE ECROU, CRENELE	1	1			
14	91490-30020	PIN, COTTER GOUPILLE	1	1			
15	6G1-45941-00-EL	PROPELLER (3X8-1/2"X8-1/2"-N) HELICE (3X8-1/2"X8-1/2"-N)	1	1			UR
	6G1-45943-00-EL	PROPELLER (3X8-1/2"X7-1/2"-N) HELICE (3X8-1/2"X7-1/2"-N)	1	1			UR
	6G1-45947-00-EL	PROPELLER (3X8-1/2"X6-1/2"-N) HELICE (3X8-1/2"X6-1/2"-N)	1	1			UR
	6G1-45952-00-EL	PROPELLER (3X8-1/2"X8"-N) HELICE (3X8-1/2"X8"-N)	1	1			UR
16	6G1-W4591-01-EL	PROPELLER (3X9"X7"-N) HELICE (3X9"X7"-N)	1	1			UR
	6G1-W4592-00-EL	PROPELLER (3X9"X5"-N) HELICE (3X9"X5"-N)	1	1			UR
17	6G1-45616-01	.NUT, PROPELLER .CONE, HELICE	1	1			
18	90201-10M02	.WASHER, PLATE .RONDELLE, PLATE	1	1			

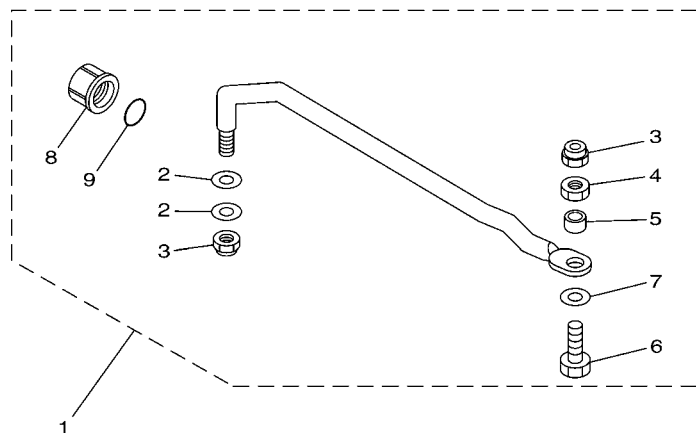


FIG. 26 STEERING GUIDE

FIXATION DE DIRECTION

[illegible]

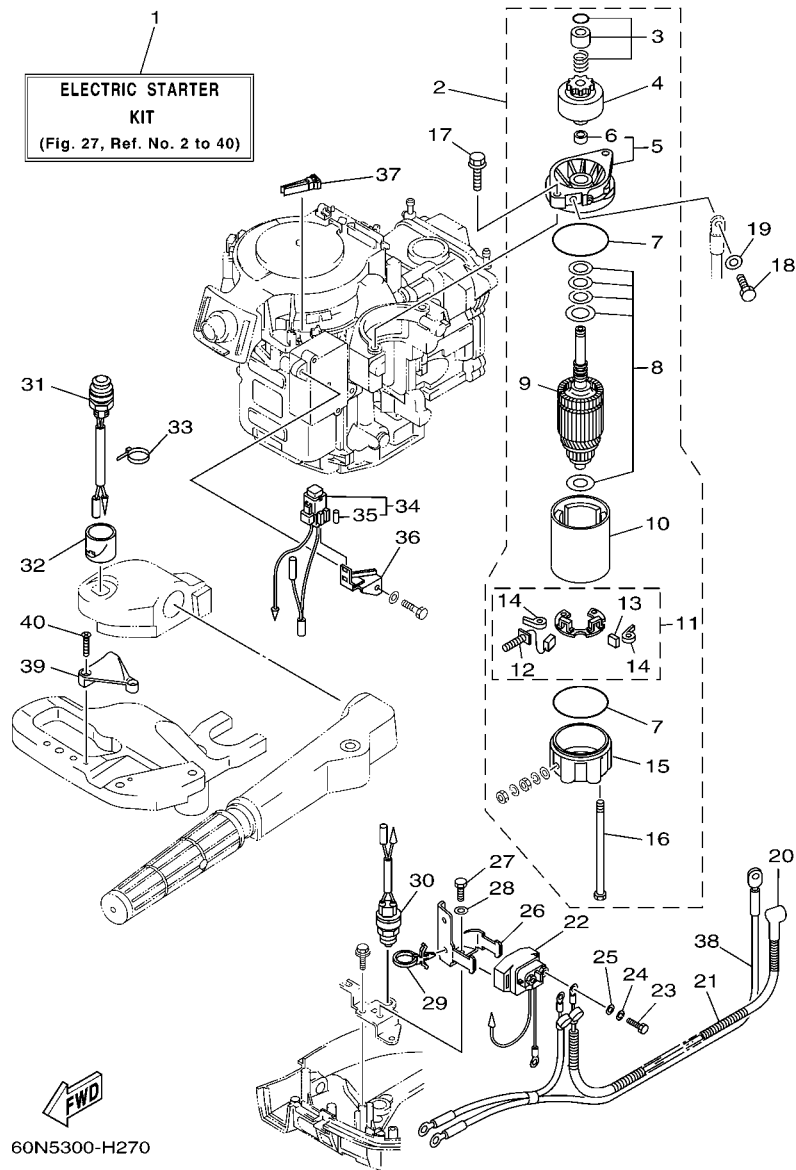


FIG. 27 OPTIONAL PARTS 1

PIECES OPTIONNELLES 1

REF. NO.	PART NO. N° PIECES	DESCRIPTION DESCRIPTION	60N5	60R5			REMARKS REMARQUES
1	68R-W8180-00	ELECTRIC STARTER KIT KIT DEMARREUR ELECTRIQUE	1	1			AP AP
2	68T-81800-00	STARTING MOTOR ASSY DEMARREUR ELECTRIQUE COMPLET	1	1			
3	68T-81857-00	.RETAINER .ARRETOIR	1	1			
4	689-81807-12	.GEAR ASSY, STARTING MOTOR .PIGNON, DEMARREUR ELECTRIQUE	1	1			
5	6F5-81830-10	.FRONT BRACKET ASSY .SUPPORT AVANT	1	1			
6	689-81831-00	.METAL, FRONT .METAL, AVANT	1	1			
7	689-81847-11	.O-RING .JOINT TORIQUE	2	2			
8	689-81809-11	.WASHER KIT .JEU DE RONDELLES	1	1			
9	689-81850-11	.ARMATURE ASSY .INDUIT	1	1			
10	689-81810-11	.STATOR ASSY .STATOR COMPLET	1	1			
11	689-81840-11	.BRUSH HOLDER ASSY .SUPPORT DE CHARBON	1	1			
12	689-81811-11	.BRUSH 1 .CHARBON 1	1	1			
13	689-81812-11	.BRUSH 2 .CHARBON 2	1	1			
14	689-81813-10	.SPRING, BRUSH .RESSORT, DE CHARBON	2	2			
15	689-81820-11	.REAR BRACKET ASSY .SUPPORT ARRIERE COMPLET	1	1			
16	689-81826-10	.BOLT .BOULON	2	2			
17	90119-08M76	BOLT, WITH WASHER BOULON, AVEC RONDELLE	2	2			
18	97095-08016	BOLT BOULON	1	1			
19	92995-08600	WASHER RONDELLE	1	1			
20	6G8-82117-00	WIRE, LEAD FIL	1	1			
21	90446-10M86	HOSE (L140) DURITE (L140)	1	1			
22	68T-81940-00	STARTER RELAY ASSY LANCEUR RELAIS (ENS.)	1	1			
23	97095-06010	BOLT BOULON	2	2			
24	92995-06100	WASHER, SPRING RONDELLE, GROWER	2	2			
25	92995-06600	WASHER RONDELLE	2	2			
26	68T-81945-01	PLATE, SWITCH FITTING PLAQUE, FIXATION DU RELAIS	1	1			
27	97095-06012	BOLT BOULON	1	1			

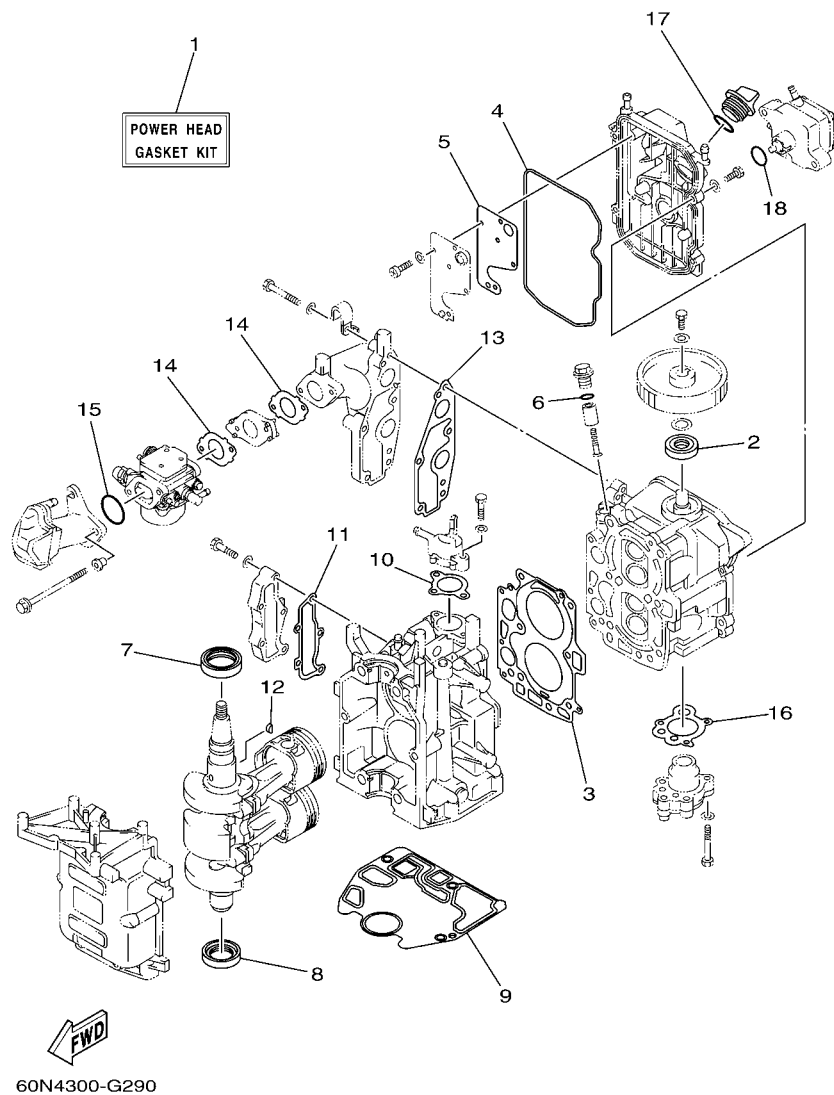


FIG. 29 REPAIR KIT 1

KITS DE REPARATION 1

REF. NO.	PART NO. N° PIECES	DESCRIPTION DESCRIPTION	60N5	60R5			REMARKS REMARQUES
1	68T-W0001-00	POWER HEAD GASKET KIT POCHETTE DE JINTS TETE MOTRICE	1	1			
2	93102-18M21	.OIL SEAL .JOINT SPY	1	1			
3	68T-11181-00	.GASKET, CYLINDER HEAD 1 .JOINT, DE CULASSE 1	1	1			
4	68T-11356-00	.SEAL, CYLINDER 2 .JOINT, SPY CYLINDRE	1	1			
5	68T-11169-A0	.GASKET, BREATHER COVER .JOINT, COUVERCLE DE RENIFLARD	1	1			
6	93210-13M63	.O-RING .JOINT TORIQUE	1	1			
7	93102-30M22	.OIL SEAL .JOINT SPY	1	1			
8	93101-25M69	.OIL SEAL .JOINT SPY	1	1			
9	68T-11351-00	.GASKET, CYLINDER .JOINT, D'EMBASE	1	1			
10	60R-E2414-A0	.GASKET, COVER .JOINT, COUVERCLE	1	1			
11	68T-41114-A0	.GASKET, EXHAUST OUTER COVER .JOINT, COUVERCLE D'ECHAPPEMENT	1	1			
12	90280-03M01	.KEY, WOODRUFF .CLAVETTE, DEMI-LUNE	1	1			
13	68T-13645-00	.GASKET, MANIFOLD 1 .JOINT, TUBULURE 1	1	1			
14	60R-E3646-A0	.GASKET, MANIFOLD 2 .JOINT, TUBULURE 2	2	2			
15	93210-31MJ5	.O-RING .JOINT TORIQUE	1	1			
16	68T-13329-00	.GASKET, PUMP COVER .JOINT, COUVERCLE DE POMPE	1	1			
17	93210-24M79	.O-RING .JOINT TORIQUE	1	1			
18	93210-20M65	.O-RING .JOINT TORIQUE	1	1			



KITS DE REPARATION 2

39



FIG. 31 REPAIR KIT 3

KITS DE PREPARATION 3

[illegible]

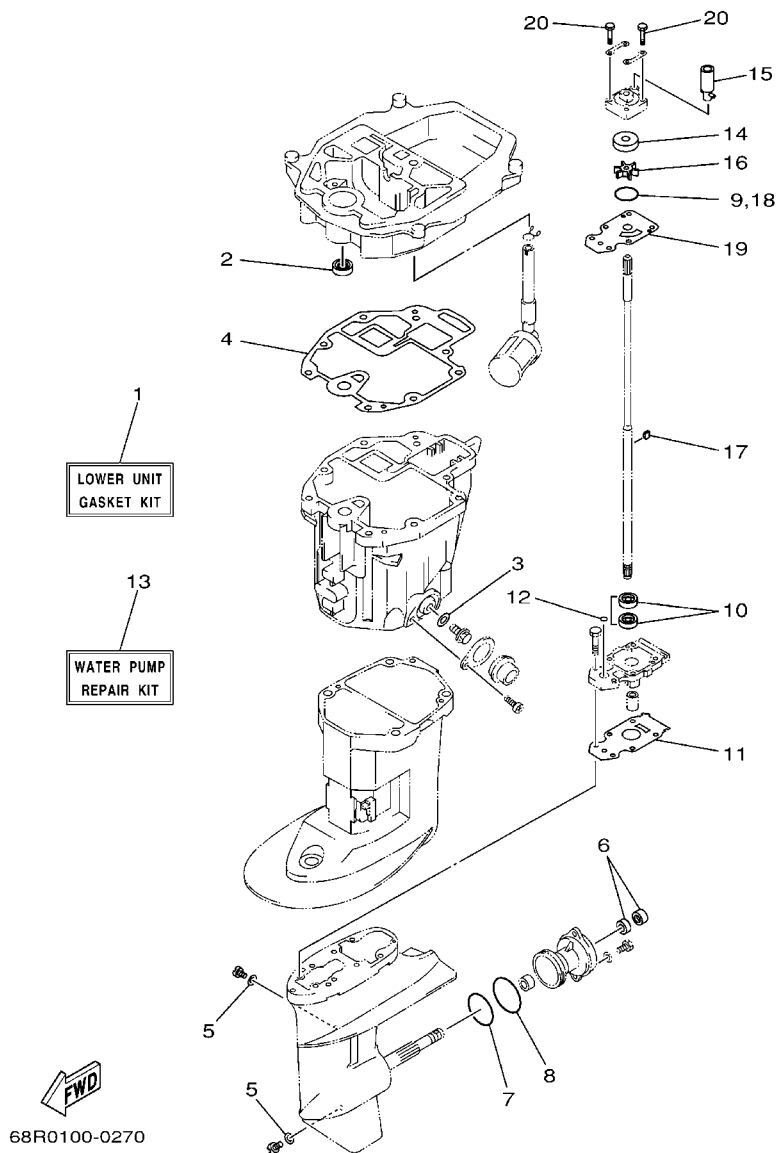


FIG. 32 REPAIR KIT 4

KITS DE REPARATION 4

REF. NO.	PART NO. N° PIECES	DESCRIPTION DESCRIPTION	60N5	60R5			REMARKS REMARQUES
1	68T-W0001-20	LOWER UNIT GASKET KIT POCHETTE DE JOINTS EMBASE	1	1			
2	93101-12M70	.OIL SEAL .JOINT SPY	1	1			
3	90430-10M11	.GASKET .JOINT	1	1			
4	68T-13475-00	.GASKET .JOINT	1	1			
5	90430-08020	.GASKET .JOINT	2	2			
6	93101-15074	.OIL SEAL .JOINT SPY	2	2			
7	93210-49046	.O-RING .JOINT TORIQUE	1	1			
8	93210-53M08	.O-RING .JOINT TORIQUE	1	1			
9	93210-44398	.O-RING .JOINT TORIQUE	1	1			
10	93101-11M23	.OIL SEAL .JOINT SPY	2	2			
11	68T-45315-A0	.PACKING, LOWER CASING .JOINT, BOITIER D'HELICE	1	1			
12	93210-06ME6	.O-RING .JOINT TORIQUE	1	1			
13	68T-W0078-00	WATER PUMP REPAIR KIT KIT DE REPARATION DE LA POMPE	1	1			
14	63V-44322-00	.INSERT, CARTRIDGE .CUVETTE	1	1			
15	68T-44366-00	.DAMPER, WATER SEAL .JOINT, TUBE D'EAU	1	1			
16	68T-44352-00	.IMPELLER .TURBINE	1	1			
17	664-44338-00	.KEY, WOODRUFF .CLAVETTE, VOLANT	1	1			
18	93210-44398	.O-RING .JOINT TORIQUE	1	1			
19	68T-44323-00	.OUTER PLATE, CARTRIDGE .PLAQUE EXTERIEURE	1	1			
20	97080-08045	.BOLT .BOULON	4	4			

NUMERICAL INDEX
INDEX NUMERIQUE

PART NO. N° PIECES	REF. NO.	PART NO. N° PIECES	REF. NO.	PART NO. N° PIECES	REF. NO.	PART NO. N° PIECES	REF. NO.	PART NO. N° PIECES	REF. NO.	PART NO. N° PIECES	REF. NO.
67D-11133-10	4 - 3	68T-13645-00	6 - 3	6J8-14959-00	8 - 14	66M-24411-01	10 - 16	6H8-42791-10	15 - 38	68T-45315-A0	32 - 11
68T-11168-00	4 - 14		29 - 13		30 - 7	66M-24413-01	10 - 13	6AH-42794-40	15 - 40	6G1-45316-09	23 - 30
68T-11169-A0	4 - 15	68T-14126-00	7 - 24		31 - 6	6A0-24421-01	10 - 14	6AH-42794-50	15 - 41	6G1-45317-09	23 - 3
	29 - 5		8 - 19	67D-14966-00	7 - 6	66M-24423-00	10 - 17	68T-42801-00	15 - 6	68T-45321-00	21 - 5
68T-11181-00	4 - 4	68T-14271-00	6 - 9		8 - 6	66M-24444-00	10 - 22	66R-43113-00	19 - 9	6G1-45362-09	23 - 12
	29 - 3	68T-14301-20	8 - 1	68T-14981-00	8 - 13	66M-24454-00	10 - 20	648-43114-01	19 - 6	63V-45375-00	24 - 10
6G8-11197-01	4 - 20	60N-14301-30	7 - 1	6AU-14982-00	7 - 13	66M-24471-01	10 - 21	6E7-43116-00	19 - 5	6G1-45533-00	23 - 40
6G8-11325-00	4 - 18	6AU-1431A-00	7 - 17	67D-14984-00	8 - 12	6YL-24610-01	25 - 2	63V-43131-10	19 - 7	6G1-45533-10	23 - 40
68T-11351-00	2 - 5	6AU-1431B-00	7 - 14		31 - 5	68T-26367-00	15 - 15	6E5-43145-01	26 - 8	6G1-45533-20	23 - 40
	29 - 9	6E5-14321-00	7 - 2	6AU-14984-00	7 - 12	68T-26393-00	15 - 14	6L2-43160-01	19 - 15	6G1-45533-30	23 - 40
68T-11356-00	4 - 11		8 - 2		30 - 6	68T-28100-00	10 - 33	689-43165-00	19 - 16	647-45567-00	23 - 45
	29 - 4	68T-14323-20	7 - 21	66T-14991-00	7 - 20	67F-2812A-00	27 - 37	63V-43191-00	19 - 28	664-45587-01	23 - 42
6H1-11372-00	22 - 13		8 - 16		8 - 15		28 - 4	68T-43350-00	19 - 26	664-45587-10	23 - 42
68T-11416-00	3 - 4	6E7-14325-00	10 - 15	68T-15317-00	22 - 17	68T-41114-A0	2 - 15	689-43373-01	20 - 4	664-45587-20	23 - 42
68T-11416-10	3 - 4	6J8-14334-00	7 - 3	68T-15362-00	22 - 24		29 - 11	68T-43611-00	19 - 33	664-45587-30	23 - 42
68T-11416-20	3 - 4		8 - 3	63V-15705-01	11 - 8	68T-41211-00	17 - 20	68T-43614-00	19 - 30	664-45587-40	23 - 42
68T-11557-00	9 - 9	6AU-14335-00	7 - 15	68T-15710-13	11 - 1	6AU-41211-00	17 - 20	68T-43615-00	19 - 32	664-45587-50	23 - 42
6G8-11575-00	22 - 9	6AU-14371-00	7 - 16	68T-15711-03	11 - 2	68T-41256-00	6 - 21	68T-43617-00	19 - 24	664-45587-60	23 - 42
6G8-11587-01	9 - 10	6AU-14373-00	7 - 26	63V-15713-00	11 - 6	6J8-41262-00	6 - 22	68T-43627-00	19 - 37	68T-45611-00	23 - 51
68T-11650-00	3 - 5	6AU-14379-00	7 - 25	63V-15714-00	11 - 4	661-41262-02	17 - 27	68T-43641-00	19 - 23	6G1-45616-01	24 - 17
67D-11654-00	3 - 6	68T-14385-00	8 - 5	68T-15716-00	11 - 7	6H4-41271-01	6 - 19	68T-43646-00	19 - 22	68T-45631-00	23 - 46
67D-12111-00	5 - 1		31 - 2	66T-15731-00	11 - 21	689-41273-00	6 - 20	68T-43659-00	19 - 35	6G1-45632-00	23 - 47
60R-12113-00	5 - 4	6AU-14385-00	7 - 5	66T-15734-00	11 - 19	68R-41283-00	17 - 18	66R-44114-00	17 - 11	654-45633-00	23 - 48
68T-12116-00	5 - 3		30 - 3	63V-15741-00	11 - 5	68T-41283-00	17 - 18	65W-44116-00	17 - 10	6G1-45635-00	23 - 50
7NJ-12117-00	5 - 5	67D-14386-00	7 - 7	63V-15744-00	11 - 11	68T-41638-00	17 - 17	68T-44121-02	17 - 5	6G1-45941-00-EL	24 - 15
7NJ-12118-00	5 - 6		8 - 7	6G1-15755-00	11 - 14	6G1-41662-01-94	17 - 6	63V-44301-00	23 - 19	6G1-45943-00-EL	24 - 15
51Y-12119-00	5 - 7		30 - 4	68T-15762-00	11 - 24	6G1-42125-01	16 - 6	63V-44322-00	23 - 20	6G1-45947-00-EL	24 - 15
67D-12121-00	5 - 2		31 - 3	68T-15764-00	11 - 13	6G1-42126-00	16 - 5		32 - 14	6G1-45952-00-EL	24 - 15
68T-12146-00	5 - 8	647-14395-60	17 - 28	63V-15767-01	11 - 9	68T-42131-01	16 - 21	68T-44323-00	23 - 25	663-48344-00	18 - 12
68T-12151-00	5 - 12	68T-14497-00	17 - 21	68T-15770-00	11 - 20	6G1-42138-01	16 - 2		32 - 19		18 - 14
6G8-12158-00	5 - 14	67D-14527-00	7 - 23	68T-15774-10	11 - 25	63V-42528-00	20 - 3	63V-44328-00	23 - 28	63V-48511-01	18 - 17
6G8-12159-00	5 - 13		8 - 18	6G1-15779-00	11 - 16	63V-42537-00	20 - 7	664-44338-00	23 - 23	68T-48531-00	18 - 2
66M-12411-01	2 - 6	67D-14536-00	7 - 22	68T-15784-00	11 - 10	60R-42615-00	1 - 6		32 - 17	682-48538-50	18 - 3
688-12412-00	2 - 7		8 - 17	6A0-15789-00	11 - 17	68T-42649-00	1 - 10	68T-44352-00	23 - 22	68T-61350-10	26 - 1
68T-12413-00-1S	2 - 8		30 - 8	68T-15793-00	11 - 12	6G1-42651-02	1 - 4		32 - 16	6E5-61355-00	26 - 6
67F-12482-00	6 - 2		31 - 8	68T-15794-00	11 - 18	60R-42652-00	1 - 7	68T-44361-00	24 - 1	68T-81800-00	27 - 2
68T-12535-00	15 - 35	68T-14546-00	7 - 8	68T-15795-00	11 - 3	68R-42677-00	1 - 13	68T-44361-10	24 - 1	689-81807-12	27 - 4
68T-12572-00	15 - 33		8 - 8	6YL-24201-05	25 - 1	68T-42677-00	1 - 13	63V-44365-10	24 - 2	689-81809-11	27 - 8
6R3-12581-00	15 - 32		30 - 5	68T-24251-00	10 - 7	68R-42678-20	1 - 11	68T-44366-00	23 - 21	689-81810-11	27 - 10
6R3-12582-00	15 - 30		31 - 4	6YL-24260-01	25 - 3	68T-42678-20	1 - 11		32 - 15	689-81811-11	27 - 12
6R3-12583-00	15 - 31	6AU-14918-00	7 - 18	6YL-24268-01	25 - 6	68T-42716-10	15 - 5	6H3-44391-01	15 - 9	689-81812-11	27 - 13
66M-13131-00	10 - 18	68T-1492A-00	8 - 11	6G1-24304-02	10 - 1	68T-42717-00	15 - 25	68T-44517-00-94	20 - 12	689-81813-10	27 - 14
68T-13300-00	9 - 15	6AU-1492A-00	7 - 11	6YL-24306-54	25 - 7	68T-42725-00	15 - 13	68T-44526-00	20 - 13	689-81820-11	27 - 15
68T-13329-00	9 - 16	68T-1492E-37	8 - 9	6YL-24329-00	25 - 5	6G1-42725-00	14 - 4	68T-44551-00-4D	20 - 17	68T-81821-00	27 - 32
	29 - 16	6AU-1492E-43	7 - 9	66M-24374-00	10 - 19	68T-42725-10	18 - 16	6G1-45214-00	24 - 6	68T-81822-01-94	13 - 20
68T-13421-01	22 - 7	68T-1492F-1K	8 - 10	650-24378-00	4 - 10	688-42726-10	15 - 18	6G1-45215-00	24 - 7	689-81826-10	27 - 16
68T-13475-00	22 - 19	6AU-1492F-20	7 - 10	6E9-24378-00	2 - 14	682-42727-00	15 - 10	68T-45251-00	23 - 6	6F5-81830-10	27 - 5
	32 - 4	6J8-14959-00	7 - 19	68T-24410-01	10 - 12	68T-42738-00-4D	15 - 11	68T-45315-A0	23 - 32	689-81831-00	27 - 6

NUMERICAL INDEX
INDEX NUMERIQUE

PART NO. N° PIECES	REF. NO.	PART NO. N° PIECES	REF. NO.	PART NO. N° PIECES	REF. NO.	PART NO. N° PIECES	REF. NO.	PART NO. N° PIECES	REF. NO.	PART NO. N° PIECES	REF. NO.
689-81840-11	27 - 11	60R-E1631-00-96	3 - 7	60R-G2511-01-4D	20 - 6	6AU-W0093-00	30 - 1	90185-09M01	26 - 3	90446-14M66	10 - 30
689-81847-11	27 - 7	60R-E1633-00	3 - 9	60R-G2511-11-4D	20 - 6	6G1-W4591-01-EL	24 - 16	90185-22043	19 - 10	90447-13M00	15 - 29
689-81850-11	27 - 9	60R-E1635-00	3 - 7	60N-G2610-00-4D	1 - 1	6G1-W4592-00-EL	24 - 16	90201-06M62	17 - 22	90464-10M53	10 - 32
68T-81857-00	27 - 3	60R-E1636-00	3 - 7	60R-G2610-00-4D	1 - 1	68R-W8180-00	27 - 1	90201-06M94	9 - 6	90464-10M60	17 - 8
68T-81870-00	27 - 31	60R-E2138-60	9 - 19	60R-G2613-00	1 - 2	60R-WE09A-01-1S	4 - 1	90201-10M01	24 - 12	90465-08M83	6 - 16
68T-81940-00	27 - 22	60R-E2171-00	9 - 2	60R-G2710-00-4D	15 - 1	60R-WE09B-00-1S	2 - 1	90201-10M02	16 - 13	90465-08M99	6 - 15
68T-81945-01	27 - 26	60R-E2414-A0	2 - 9	60S-G2717-00	15 - 19	90101-06M18	19 - 12		24 - 18		13 - 23
68T-81949-00	28 - 1		29 - 10		22 - 2	90105-06M07	20 - 5	90201-10M20	26 - 2	90465-11M10	2 - 12
68T-81960-00	13 - 13	60R-E2481-00	2 - 11	60R-G2724-00	15 - 16	90105-06M14	9 - 4	90201-10M63	26 - 7		10 - 11
6AH-81994-40	11 - 31	60S-E2481-00	15 - 27	60R-G2741-00	15 - 20	90105-08M36	4 - 6	90201-12472	12 - 12		10 - 31
6AH-81994-50	11 - 32	60R-E2482-00	2 - 17	60R-G3111-01-4D	19 - 1	90105-08M78	4 - 7	90201-13201	9 - 5		12 - 9
6AH-81995-40	11 - 27	60R-E2483-00	6 - 14	60R-G3112-01-4D	19 - 2	90109-06M81	15 - 12	90201-15M89	23 - 44		13 - 16
6AH-81995-50	11 - 28	60R-E3434-00	1 - 14	6L8-G3118-01	19 - 3		17 - 7	90202-36M55	16 - 19		13 - 26
68T-82105-00	27 - 38	60R-E3437-61	11 - 29	60R-G3311-00-4D	19 - 19	90109-06M84	19 - 38	90206-10M24	19 - 39		15 - 28
6G8-82117-00	27 - 20	60R-E3641-20-1S	6 - 1	60R-G3311-10-4D	19 - 19	90109-06M86	11 - 26	90206-36M21	16 - 18		27 - 33
68T-82127-00	20 - 2	60R-E3646-A0	6 - 8	60R-G3616-00	19 - 21		17 - 12	90243-04M01	19 - 4	90465-12M56	27 - 29
68T-82127-10	13 - 18		29 - 14	60R-G3631-00	19 - 20	90116-08015	16 - 22	90266-04M04	1 - 5	90467-09M05	23 - 37
68T-82150-00	27 - 34	60R-E4440-00	6 - 10	60R-G4111-00	17 - 1	90116-08M54	20 - 11	90269-02M09	16 - 11	90467-09M09	10 - 6
66V-82151-00	27 - 35	60R-E4711-00-5B	21 - 2	60R-G4111-10	18 - 8	90116-10040	16 - 25	90280-03M01	9 - 12		10 - 9
	28 - 2	60R-E5100-00-1S	2 - 2	60R-G4143-00	17 - 13	90119-06012	20 - 20		29 - 12		10 - 29
68T-82171-01	27 - 36	60R-E5311-00-5B	22 - 12	60R-G4143-10	17 - 13	90119-06013	20 - 21	90280-04M06	12 - 10	90467-11M08	22 - 8
	28 - 3	60R-E5316-00	22 - 16	60R-G4150-00	23 - 35	90119-06014	12 - 6	90340-08002	23 - 9	90468-18001	17 - 14
6E3-82370-21	13 - 12	69M-E5363-00	4 - 22	60R-G4555-00	20 - 19	90119-06049	4 - 8	90340-10M10	22 - 14	90468-18008	18 - 13
67F-82504-00	13 - 17	60R-E571Y-60	16 - 27	60R-G4557-00	20 - 18	90119-06MA1	12 - 8	90386-08032	16 - 15		18 - 15
68T-82522-00	13 - 2	60R-F415E-00	15 - 39	60R-G5111-00-4D	21 - 1	90119-06MA2	2 - 10	90386-22MA4	19 - 8	90480-06M19	15 - 17
6F5-82540-01	27 - 30	60R-F4329-00	10 - 2	60R-G5111-10-4D	21 - 1	90119-06MA3	2 - 16	90386-30048	20 - 8	90480-10627	9 - 14
682-82556-00	14 - 2	60R-F6301-00	16 - 16	60R-G5181-00	22 - 3		6 - 5	90386-30M60	20 - 10	90480-14M54	21 - 4
65W-82575-01	14 - 1	60R-F8199-74-D0	10 - 34	60R-G5300-00-4D	23 - 1	90119-06MA5	6 - 4	90386-33M96	16 - 20	90480-21M82	15 - 3
689-8257Y-00	14 - 3	60R-F8199-74-E0	10 - 34	60R-G5300-10-4D	23 - 1	90119-08005	22 - 21	90386-34M97	16 - 17	90480-25161	13 - 9
68T-82594-00	27 - 39	60R-F8199-74-F0	10 - 34	60R-G5311-00-4D	23 - 2	90119-08020	13 - 22	90387-06176	15 - 4	90501-12M05	23 - 49
68F-85119-00	15 - 2	60R-F8199-74-G0	10 - 34	60R-G5331-00-5B	23 - 29	90119-08046	13 - 21	90387-06M13	19 - 11	90501-12M40	5 - 11
68T-85410-00	13 - 19	60R-F8199-74-H0	10 - 34	6N0-G5361-00-4D	23 - 11	90119-08M29	2 - 4	90387-06M59	17 - 19	90501-23800	16 - 14
68T-85520-00	12 - 2	60R-F8199-74-S0	10 - 34	60R-G5511-00	23 - 36	90119-08M76	27 - 17	90387-06M70	6 - 12	90502-10M07	19 - 18
68T-85533-10	12 - 4	60R-F8199-84-K0	10 - 35	60R-G5511-10	23 - 36	90149-05M13	16 - 12	90387-10M42	26 - 5	90506-18M41	19 - 27
68R-85540-00	13 - 1	60R-F8199-84-L0	10 - 35	6N0-G5551-A0	23 - 39	90151-05003	27 - 40	90387-13M56	5 - 9	90506-20005	19 - 27
68T-85540-00	13 - 1	60R-F8199-84-M0	10 - 35	60R-G5560-00	23 - 41	90152-05M03	24 - 8	90387-14M03	5 - 10	90506-20806	19 - 31
68T-85550-11	12 - 1	60R-F8199-84-N0	10 - 35	60R-G5571-00	23 - 43	90157-05M16	25 - 4	90387-14M49	23 - 4	90506-23803	19 - 31
680-85570-02	13 - 8	60R-F8199-84-P0	10 - 35	6N0-G5598-10	24 - 11	90167-06002	15 - 34	90430-08020	23 - 10	91490-16010	16 - 7
68T-85580-01	12 - 3	60R-F8199-84-R0	10 - 35	60R-G6241-00	9 - 7	90170-06015	17 - 15		32 - 5	91490-30020	24 - 14
6H2-85582-00	12 - 5	60R-G1113-00-1S	2 - 13	60R-G6297-00	9 - 13	90170-09M03	26 - 4	90430-08800	22 - 5	91690-30008	19 - 17
60R-E1111-00-1S	4 - 2	60R-G1137-00-94	22 - 1	60R-G8501-00	18 - 1	90170-12066	12 - 11	90430-10M11	22 - 15	91690-30012	18 - 4
60R-E1191-00-1S	4 - 9	60R-G2111-00-4D	16 - 1	60R-H4342-00	15 - 26	90170-24M09	9 - 11		32 - 3	91690-30014	17 - 9
60R-E1411-00	3 - 3	68D-G2119-00	16 - 9	60R-H5711-60	11 - 30	90171-10M01	24 - 13	90445-09812	6 - 7	91690-50014	6 - 6
60R-E1536-00	9 - 8	60R-G2121-00-4D	16 - 24	68T-W0001-00	29 - 1	90179-06M28	20 - 22	90445-10809	10 - 5	91812-12001	2 - 3
60R-E1537-00-94	9 - 3	60N-G2137-00	16 - 10	68T-W0001-20	32 - 1	90179-10M33	16 - 26	90445-10810	10 - 28	92907-04600	4 - 17
60R-E1603-00	3 - 8	60R-G2137-00	16 - 10	68T-W0070-60	1 - 12	90185-05002	24 - 9	90445-10811	10 - 8	92990-06300	23 - 8
60R-E1604-00	3 - 8	68D-G2159-00	16 - 3	68T-W0078-00	32 - 13	90185-08057	16 - 23	90446-10M86	27 - 21	92990-06600	19 - 13
60R-E1605-00	3 - 8	68D-G2177-10	16 - 8	68T-W0093-00	31 - 1		18 - 20	90446-14M66	10 - 10	92995-05600	1 - 9

NUMERICAL INDEX
INDEX NUMERIQUE

PART NO. N° PIECES	REF. NO.	PART NO. N° PIECES	REF. NO.	PART NO. N° PIECES	REF. NO.	PART NO. N° PIECES	REF. NO.	PART NO. N° PIECES	REF. NO.	PART NO. N° PIECES	REF. NO.
92995-05600	17 - 4	93210-12M62	22 - 10	97095-06008	21 - 6						
	18 - 11	93210-13M63	4 - 21	97095-06010	6 - 17						
92995-06100	10 - 25		29 - 6		27 - 23						
	15 - 22	93210-16275	26 - 9	97095-06012	13 - 6						
	27 - 24	93210-20M65	10 - 27		13 - 14						
92995-06600	4 - 13		29 - 18		13 - 24						
	6 - 18	93210-24M79	4 - 23		15 - 7						
	9 - 18		29 - 17		15 - 36						
	10 - 4	93210-29M94	20 - 9		17 - 25						
	10 - 26	93210-31MJ5	6 - 11		18 - 5						
	11 - 23		29 - 15		27 - 27						
	13 - 5	93210-44398	23 - 24		28 - 5						
	13 - 7		32 - 9	97095-06016	23 - 17						
	13 - 11		32 - 18	97095-06020	4 - 12						
	13 - 15	93210-49046	23 - 15		11 - 22						
	13 - 25		32 - 7		13 - 4						
	15 - 8	93210-53M08	23 - 16	97095-06025	10 - 3						
	15 - 23		32 - 8		13 - 10						
	15 - 37	93306-004YH	23 - 5	97095-06030	9 - 17						
	17 - 24		23 - 13		10 - 24						
	17 - 26	93430-04M03	19 - 34	97095-06045	17 - 23						
	18 - 6	93450-15023	3 - 10	97095-08014	22 - 4						
	20 - 16	93604-12M07	21 - 8	97095-08016	27 - 18						
	23 - 18		22 - 20	97575-06514	21 - 3						
	27 - 25		23 - 26	97595-06585	6 - 13						
	27 - 28		24 - 3	97780-40512	13 - 3						
	28 - 6	93606-19M23	22 - 11	97780-60516	1 - 3						
92995-08600	18 - 19	93700-06M03	20 - 1	97880-05025	4 - 19						
	21 - 10	94702-00274	4 - 24	97885-05008	21 - 7						
	22 - 23	95380-04600	10 - 23		22 - 18						
	24 - 5	95380-06600	15 - 24	97885-05012	16 - 4						
	27 - 19		18 - 7	97885-06030	15 - 21						
93101-11M23	23 - 31	95380-06700	17 - 16	97980-04112	7 - 4						
	32 - 10		19 - 14		8 - 4						
93101-12M70	22 - 6	95380-08600	20 - 14		30 - 2						
	32 - 2	95895-06016	23 - 7		31 - 7						
93101-15074	23 - 14	97075-06025	20 - 15	98507-04010	4 - 16						
	32 - 6	97075-08030	22 - 22	99001-07600	23 - 38						
93101-25M69	3 - 2	97075-08035	18 - 18	99080-05600	19 - 25						
	29 - 8		21 - 9		19 - 29						
93102-18M21	9 - 1		24 - 4		19 - 36						
	29 - 2	97080-08025	23 - 34	99510-10114	4 - 5						
93102-30M22	3 - 1	97080-08045	23 - 27								
	29 - 7		32 - 20								
93210-06ME6	23 - 33	97095-05010	12 - 7								
	32 - 12	97095-05014	1 - 8								
93210-12327	17 - 2	97095-05016	17 - 3								
	18 - 9		18 - 10								