

**PARTS
CATALOGUE
CATALOGUE
DE PIÉCES DÉTACHÉES**

F6A'01 (68R0)

F6B'01 (69F0)

F8C'01 (68T0)

YAMAHA
GENUINE
Parts & Accessories

1Z68R-300F1

FOREWORD

This Parts Catalogue is related to the parts for the model(s) in the below frame. When you are ordering replacement parts, please refer to this Parts Catalogue and quote both part numbers and part names correctly.

F6A'01(68R0), F6B'01(69F0), F8C'01(68T0)

1. Modifications or additions which have been made after issue of the Parts Catalogue will be announced in the Yamaha Parts News.
It is advisable that you make necessary corrections to the Parts Catalogue according to the Yamaha Parts News.

2. Abbreviations

The Following abbreviations are used in this Parts Catalogue.

"UR" Use specified parts number.

"UN" Use as many as needed.

"AP" Alternate Parts

"LM" Local Made

(Parts need to be ordered locally)

"O/S" Over Size

3. Parts, which are to be supplied in an assembly, are listed with a dot(.) in front of the part name as shown below.

EXAMPLE

CARBURETOR ASSY

.JET, PILOT

.NOZZLE, MAIN

4. Number of component for assembly

The numeral appearing to the right of each component part indicates the quantity of parts for each assembly unit.

EXAMPLE

PART NO.	DESCRIPTION	量	五	上	五	REMARKS
6E0-85500-70	C.D.I. MAGNETO ASSY	1				
6E0-85550-70	.ROTOR ASSY	1				
6E0-15723-00-94..	PULLY, STARTER	1				

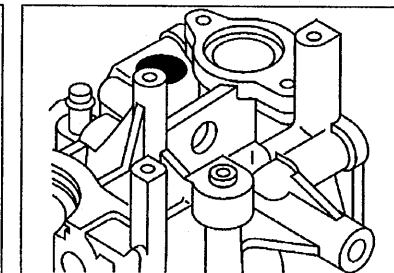
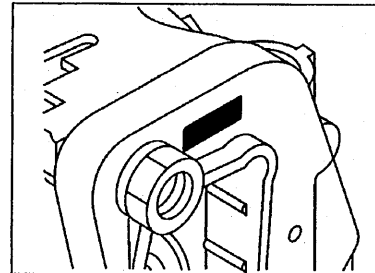
5. Quantity Column Information

NAME for Q'TY COLUMN	APPLICABLE MODEL
F6MH	F6AMH
F8MH	F8CMH
SAV	F6AMH, F6BMH, F8CMH
F8W	F8CW

6. Applicable Starting Serial No. and Color Code

1) Engine Starting Serial No.

F6AMH	S : 000974	F8CMH	S : 001068
	L : 300408		L : 300683
F6BMH	S : 200366	F8CW	S : 200101
	L : 500176		



2) Color Code

Color Code	Color Name	Abbreviation
004D	DARK BLUISH GRAY METALLIC 2	DBNM2

7. Note that the illustrations for reference in finding parts numbers, not to be used for assembling. When assembling, please use the applicable service manual.
8. The asterisk (*) before a reference number indicates modification items after the first edition.

AVANT-PROPOS

Ce Catalogue de pièces détachées concerne les pièces pour le(s) modèle(s) indiqué(s) dans le cadre ci-dessous. Lorsque vous commandez des pièces de rechange, veuillez vous référer à ce catalogue de pièces détachées et indiquer clairement les numéros et les noms des pièces détachées.

F6A'01(68R0), F6B'01(69F0), F8C'01(68T0)

1. Les modifications ou ajouts ayant été effectués après la parution du catalogue de pièces détachées seront décrits dans les Bulletins d'information Yamaha concernant les pièces détachées. Il est recommandé que vous apportiez les corrections nécessaires au catalogue des pièces détachées en vous référant aux Bulletins d'information Yamaha.

2. Abréviations

Dans ce catalogue, les abréviations suivantes sont utilisées:

"UR" Utiliser le numéro des pièces.

"UN" Utiliser autant que nécessaire.

"AP" Pièces de substitution

"LM" Fabrication locale (les pièces doivent être commandées localement.)

3. Dans ce catalogue, les pièces qui sont fournies dans un ensemble sont précédées d'un point (.) de la manière indiquée ci-dessous.

EXEMPLE

ENS CARBURATEUR

.GICLEUR, ralenti

.PUITS D'AIGUILLE

4. Nombre de pièces composant un ensemble

Le chiffre apparaissant à la droite de chaque description indique la quantité de pièces pour chaque ensemble de pièces.

EXEMPLE

NO. PIECES	DESCRIPTION	1	2	3	4	REMARQUES
6E0-85500-70	MAGNETO C.D.I. CPLT	1				
6E0-85550-70	.ROTOR CPLT	1				
6E0-15723-00-94	..POULIE DE DEMARREUR	1				

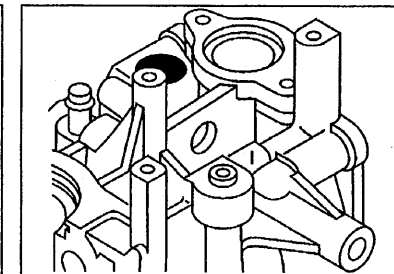
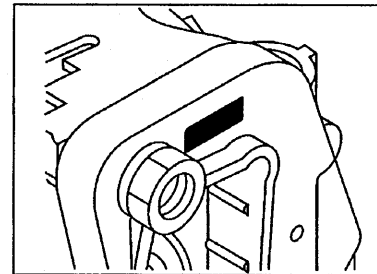
5. Indication concernant la quantité

Indication concernant la quantité	Applications modèle
F6MH	F6AMH
F8MH	F8CMH
SAV	F6AMH, F6BMH, F8CMH
F8W	F8CW

6. Applications No de série et code couleur correspondants

1) No. de série du moteur

F6AMH	S : 000974	F8CMH	S : 001068
	L : 300408		L : 300683
F6BMH	S : 200366	F8CW	S : 200101
	L : 500176		



2) Code couleur

Code couleur	Nom de couleur	Abréviation
004D	DARK BLuish GRAY METALLIC 2	DBNM2

7. Veuillez noter que les illustrations sont indiquées pour référence pour trouver les numéros de pièces, non pour être utilisées lors de l'assemblage. Lors de l'assemblage, veuillez utiliser le manuel d'entretien adéquat.

8. L'astérisque (*) placé devant un numéro de référence. indique des éléments qui ont été modifiés après la première édition.

CONTENTS

SHEET 1/2

TOP COWLING	A4
CYLINDER, CRANKCASE 1	A5
CRANKSHAFT, PISTON	A6
CYLINDER, CRANKCASE 2	A7
VALVE	B1
INTAKE	B2
CARBURETOR	B3
OIL PUMP	B4
FUEL	B5
STARTER	B7
GENERATOR	C2
ELECTRICAL 1	C3
ELECTRICAL 2	C4
ELECTRICAL 3	C6
STARTING MOTOR	C7
BOTTOM COWLING	D2
STEERING	D4
CONTROL 1	D6
CONTROL 2	E1
REMOTE CONTROL ATTACHMENT	E3
BRACKET 1	E4
BRACKET 2	E6
UPPER CASING	F1
OIL PAN	F2
LOWER CASING, DRIVE 1	F3
LOWER CASING, DRIVE 2	F6
FUEL TANK 1	F7

INDEX

NUMERICAL INDEX	G1
-----------------------	----

SHEET 2/2

FUEL TANK 2	A4*
STEERING GUIDE	A5*
REMOTE CONTROL BOX	A6*
REMOTE CONTROL ASSY	A7*
OPTIONAL PARTS	B3*
REPAIR KIT 1	B5*
REPAIR KIT 2	B6*
REPAIR KIT 3	B7*

INDEX

NUMERICAL INDEX	G1*
-----------------------	-----

TABLE DES MATIERES

Feuille 1/2

CAPOT SUPERIEUR	A4
CYLINDRE. CARTER 1	A5
VILEBREQUIN. PISTON	A6
CYLINDRE. CARTER 2	A7
SOUPAPE	B1
ADMISSION	B2
CARBURATEUR	B3
POMPE A HUILE	B4
CARBURANT	B5
DEMARREUR	B7
GENERATRICE	C2
PARTIE ELECTRIQUE 1	C3
PARTIE ELECTRIQUE 2	C4
PARTIE ELECTRIQUE 3	C6
DEMARREUR ELECTRIQUE	C7
CAPOT INFERIEUR	D2
DIRECTION	D4
COMMANDE 1	D6
COMMANDE 2	E1
COMMANDE A DISTANCE	E3
SUPPORT 1	E4
SUPPORT 2	E6
FOURREAU	F1
VENTILATEUR D'HUILE	F2
BOITIER D'HELICE, TRANSMISSION 1	F3
BOITIER D'HELICE, TRANSMISSION 2	F6
RESERVOIR A CARBURANT 1	F7

INDEX

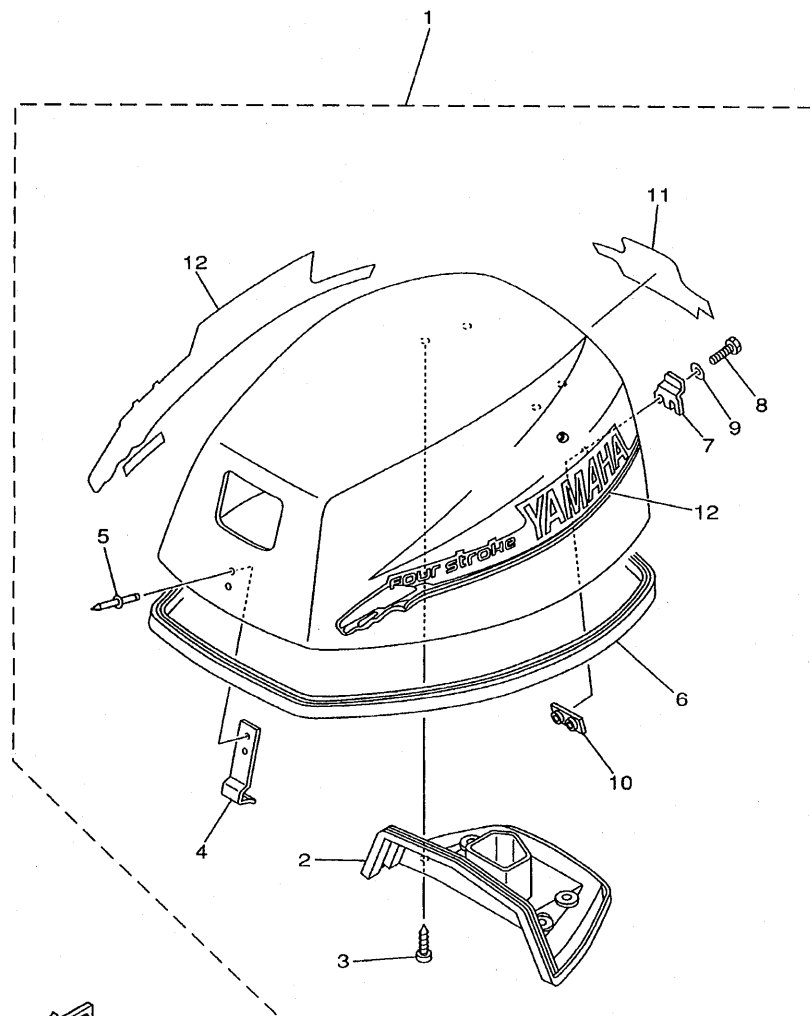
INDEX NUMERIQUE	G1
-----------------------	----

Feuille 2/2

RESERVOIR A CARBURANT 2	A4*
FIXATION DE DIRECTION	A5*
BOITIER DE COMMANDE A DISTANCE	A6*
BOITIER DE COMMANDE A DISTANCE	A7*
PIECES OPTIONNELLES	B3*
KITS DE REPARATION 1	B5*
KITS DE REPARATION 2	B6*
KITS DE REPARATION 3	B7*

INDEX

INDEX NUMERIQUE	G1*
-----------------------	-----



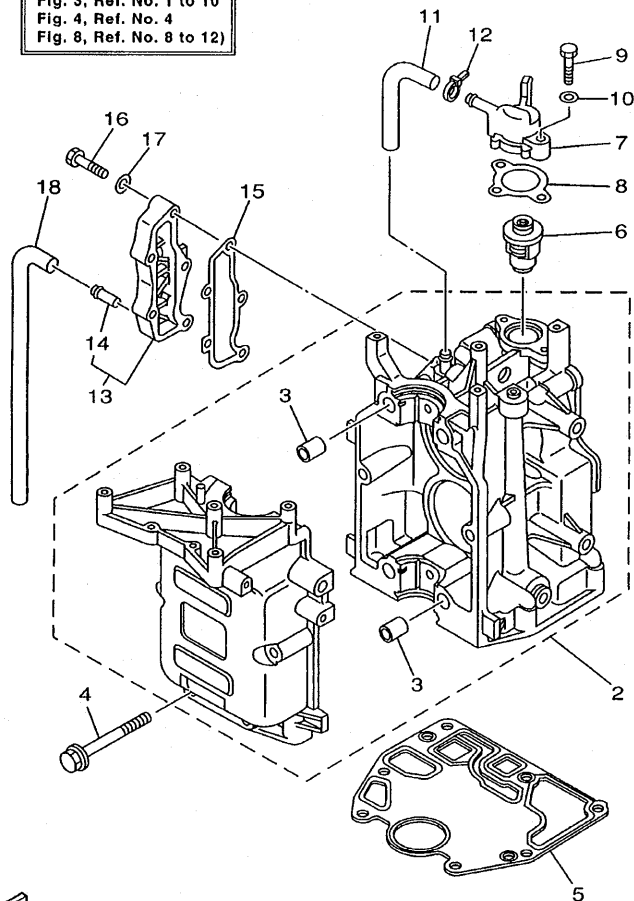
68R0010-0010

FIG. 1 TOP COWLING

CAPOT SUPERIEUR

REF. NO.	PART NO. NO. PIECES	DESCRIPTION DESCRIPTION	F6MH	F8MH	SAV	F8W	REMARKS REMARQUES
1	68R-42610-50-4D	TOP COWLING ASSY CAPOT (ENS.)	1		1		F6A,F6B
	68T-42610-50-4D	TOP COWLING ASSY CAPOT (ENS.)		1	1	1	F8C
2	68T-42613-00	.MOLDING, AIR DUCT .MANCHON A AIR	1	1	1	1	
3	97780-60516	.SCREW, TAPPING .VIS, TETE FRAISEE	4	4	4	4	
4	6G1-42651-02	.HOOK .CROCHET	1	1	1	1	
5	90266-04M04	.RIVET .RIVET	2	2	2	2	
6	68T-42615-00	.SEAL .JOINT	1	1	1	1	
7	68T-42652-00	.HOOK .CROCHET	1	1	1	1	
8	97095-05016	.BOLT .BOULON	2	2	2	2	
9	92995-05600	.WASHER .RONDELLE	2	2	2	2	
10	68T-42649-00	.HOLDER, CLAMP BAND .SUPPORT, SANDOW DE SERRAGE	1	1	1	1	
11	68R-42678-10	.GRAPHIC, REAR .ADHESIF, ARRIERE	1		1		F6A,F6B
	68T-42678-10	.GRAPHIC, REAR .ADHESIF, ARRIERE		1	1	1	F8C
12	68T-W0070-50	.GRAPHIC SET .JEU DIEMBLEMES	1	1	1	1	

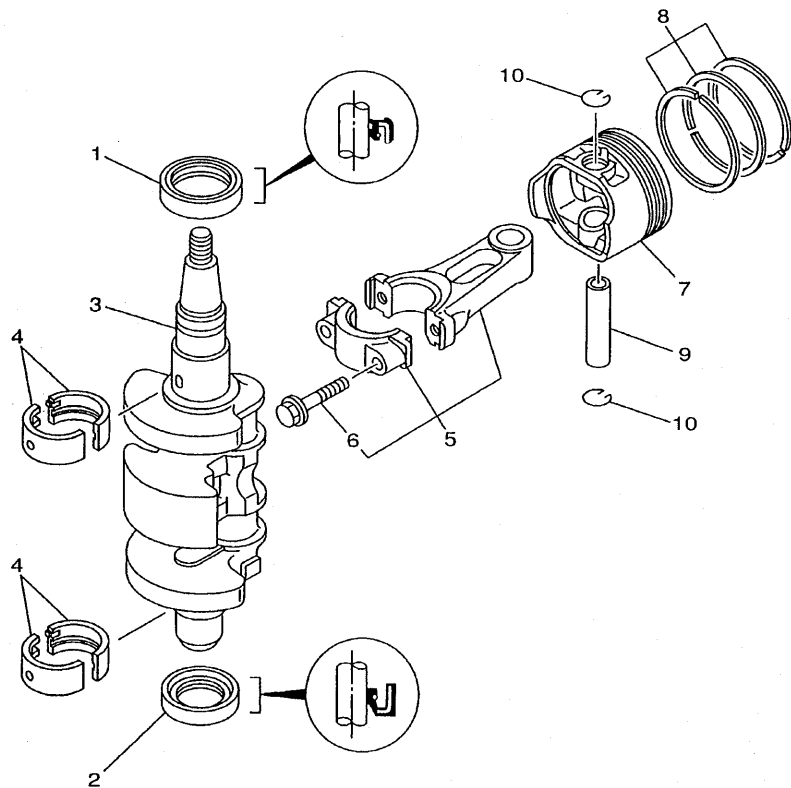
1
CYLINDER BLOCK
ASSY
(Fig. 2, Ref. No. 2 to 10,
13 to 17
Fig. 3, Ref. No. 1 to 10
Fig. 4, Ref. No. 4
Fig. 8, Ref. No. 8 to 12)



68R0100-0020

FIG. 2 CYLINDER. CRANKCASE 1 CYLINDRE. CARTER 1

REF. NO.	PART NO. NO. PIECES	DESCRIPTION DESCRIPTION	F6MH	F8MH	SAV	F8W	REMARKS REMARQUES
1	68T-W009B-00-4D	CYLINDER BLOCK ASSY CYLINDRE GROUPE (ENS.)	1	1	1	1	
2	68T-15100-00-94	CRANKCASE ASSY CARTER DE MOTEUR COMPLET	1	1	1	1	
3	99530-12016	.PIN, DOWEL .GOUJON, D'ASSEMBLAGE	4	4	4	4	
4	90119-08M29	BOLT, WITH WASHER BOULON, AVEC RONDELLE	6	6	6	6	
5	68T-11351-00	GASKET, CYLINDER JOINT, D'EMBASE	1	1	1	1	
6	66M-12411-00	THERMOSTAT THERMOSTAT	1	1	1	1	
7	68T-12413-00-9M	COVER, THERMOSTAT COUVERCLE, THERMOSTAT	1	1	1	1	
8	6G8-12414-A0	GASKET, COVER JOINT, COUVERCLE	1	1	1	1	
9	97013-06020	BOLT BOULON	2	2	2	2	
10	92903-06600	WASHER, PLATE RONDELLE, PLATE	2	2	2	2	
11	68T-12481-00	PIPE 1 DURITE 1	1	1	1	1	
12	90465-11M10	CLAMP BRIDE	1	1	1	1	
13	68T-41113-00-9M	OUTER COVER, EXHAUST COUVERCLE, ECHAPPEMENT	1	1	1	1	
14	6E9-24378-00	.PIPE, JOINT 4 .DURITE RACCORDEMENT 4	1	1	1	1	
15	68T-41114-A0	GASKET, EXHAUST OUTER COVER JOINT, COUVERCLE D'ECHAPPEMENT	1	1	1	1	
16	97013-06025	BOLT BOULON	5	5	5	5	
17	92903-06600	WASHER, PLATE RONDELLE, PLATE	5	5	5	5	
18	68T-12482-00	PIPE 2 DURITE 2	1	1	1	1	

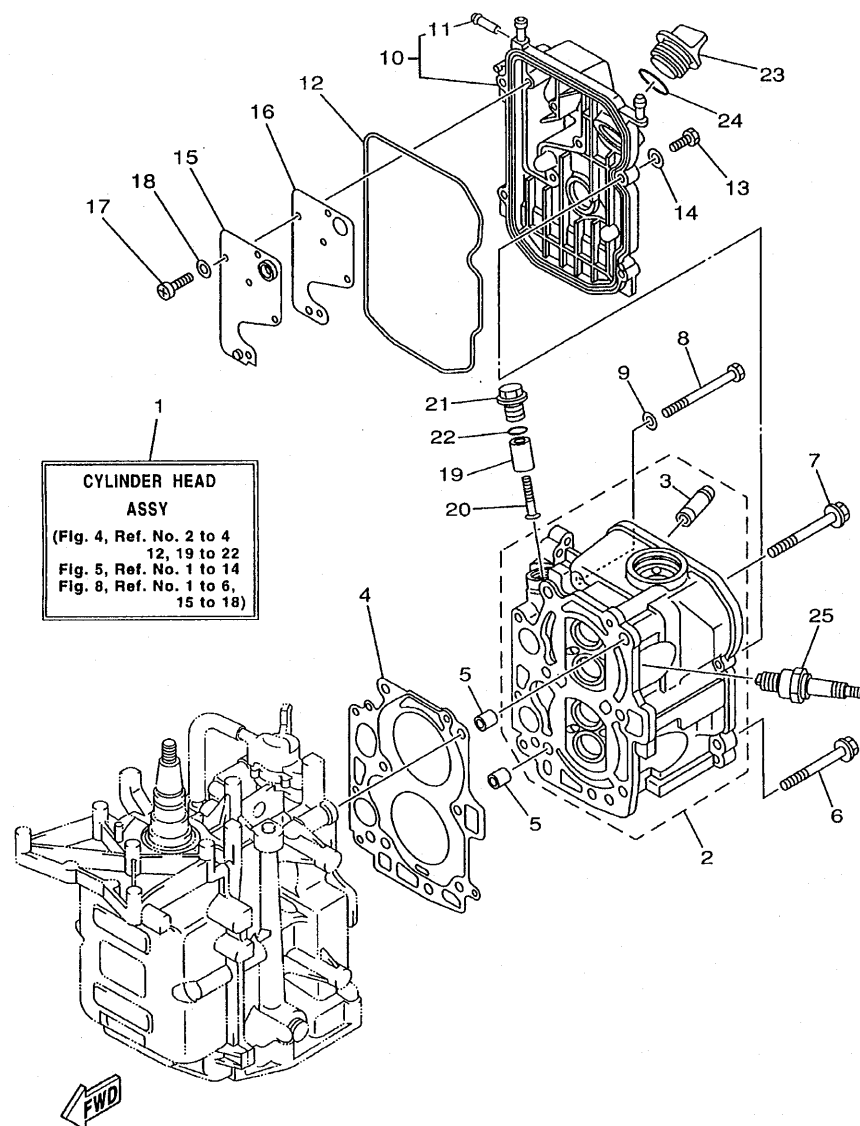


68R0010-0030

FIG. 3 CRANKSHAFT. PISTON

VILEBREQUIN. PISTON

REF. NO.	PART NO. NO. PIECES	DESCRIPTION DESCRIPTION	F6MH	F8MH	SAV	F8W	REMARKS REMARQUES
1	93102-30M22	OIL SEAL JOINT SPY	1	1	1	1	
2	93101-25M69	OIL SEAL JOINT SPY	1	1	1	1	
3	68T-11411-00	CRANKSHAFT VILEBREQUIN COMPLET	1	1	1	1	
4	68T-11416-00	PLANE BEARING, CRANKSHAFT 1 COUSSINET DE VILEBREQUIN	4	4	4	4	UR BROWN
	68T-11416-10	PLANE BEARING, CRANKSHAFT 1 COUSSINET DE VILEBREQUIN	4	4	4	4	UR BLACK
	68T-11416-20	PLANE BEARING, CRANKSHAFT 1 COUSSINET DE VILEBREQUIN	4	4	4	4	UR BLUE
5	68T-11650-00	CONNECTING ROD ASSY BIELLE COMPLETE	2	2	2	2	
6	67D-11654-00	.BOLT, CONNECTING ROD .BOULON, BIELLE	2	2	2	2	
7	68T-11631-00-96	PISTON (STD) PISTON (STD)	2	2	2	2	
	68T-11635-00	PISTON (0.25MM O/S) PISTON (0.25MM O/S)	2	2	2	2	AP
	68T-11636-00	PISTON (0.50MM O/S) PISTON (0.50MM O/S)	2	2	2	2	AP
8	68T-11603-00	PISTON RING SET (STD) JUE DE SEGMENTS (STD)	2	2	2	2	
	68T-11604-00	PISTON RING SET (0.25MM O/S) JUE DE SEGMENTS (0.25MM O/S)	2	2	2	2	AP
	68T-11605-00	PISTON RING SET (0.50MM O/S) JUE DE SEGMENTS (0.50MM O/S)	2	2	2	2	AP
9	68T-11633-00	PIN, PISTON AXE, PISTON	2	2	2	2	
10	93450-15023	CIRCLIP CIRCLIP, TYPE S	4	4	4	4	



68R0100-0040

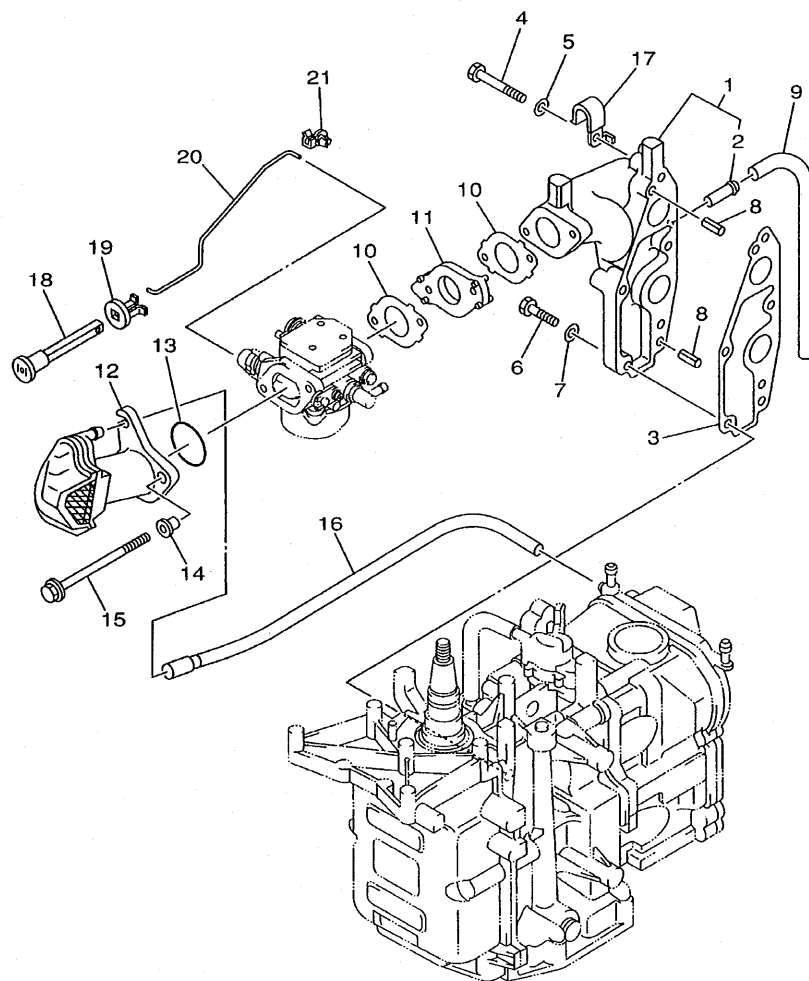
FIG. 4 CYLINDER. CRANKCASE 2 CYLINDRE. CARTER 2

REF. NO.	PART NO. NO. PIECES	DESCRIPTION DESCRIPTION	F8MH	F8MH	SAV	F8W	REMARKS REMARQUES
1	68T-W009A-00-4D	CYLINDER HEAD ASSY CULASSE (ENS.)	1	1	1	1	
2	68T-11111-00-94	HEAD, CYLINDER 1 CULASSE	1	1	1	1	
3	67D-11133-10	.GUIDE, INTAKE VALVE .GUIDE, SOUP D'ADM	4	4	4	4	
4	68T-11181-00	GASKET, CYLINDER HEAD 1 JOINT, DE CULASSE 1	1	1	1	1	
5	99510-10114	PIN, DOWEL GOIJON, D'ASSEMBLAGE	2	2	2	2	
6	90105-08M36	BOLT, WASHER BASED BOULON, AVEC RONDELLE	2	2	2	2	
7	90105-08M78	BOLT, WASHER BASED BOULON, AVEC RONDELLE	4	4	4	4	
8	97013-06070	BOLT BOULON	3	3	3	3	
9	92903-06600	WASHER, PLATE RONDELLE, PLATE	3	3	3	3	
10	68T-11191-00-94	COVER, CYLINDER HEAD 1 COUVERCLE, CULASSE 1	1	1	1	1	
11	650-24378-00	.PIPE, JOINT 4 .DURITE RACCORDEMENT 4	1	1	1	1	
12	68T-11356-00	SEAL, CYLINDER 2 JOINT, SPY CYLINDRE	1	1	1	1	
13	97095-06020	BOLT BOULON	4	4	4	4	
14	92995-06600	WASHER RONDELLE	4	4	4	4	
15	68T-11168-00	COVER, BREATHER COUVERCLE, RENIFLARD	1	1	1	1	
16	68T-11169-A0	GASKET, BREATHER COVER JOINT, COUVERCLE DE RENIFLARD	1	1	1	1	
17	98507-04010	SCREW, PAN HEAD VIS, TETE TRONCONIQUE	5	5	5	5	
18	92907-04600	WASHER RONDELLE	5	5	5	5	
19	68T-11325-00	ANODE ANODE	1	1	1	1	
20	90151-05M05	SCREW, COUNTERSUNK VIS, TETE NOYEE	1	1	1	1	
21	6G8-11197-01	PLUG, BLIND PLOT, BORGNE	1	1	1	1	
22	93210-13M63	O-RING JOINT TORIQUE	1	1	1	1	
23	6G8-15363-00	PLUG, OIL PLOT, HUILE	1	1	1	1	
24	93210-24M79	O-RING JOINT TORIQUE	1	1	1	1	
25	94702-00274	PLUG SPARK (NGK BR6HS-10) BOUGIE D'ALLUMAGE (NGK BR6HS-10)	2	2	2	2	



SOUPE

B1



68R0010-0060

FIG. 6 INTAKE

ADMISSION

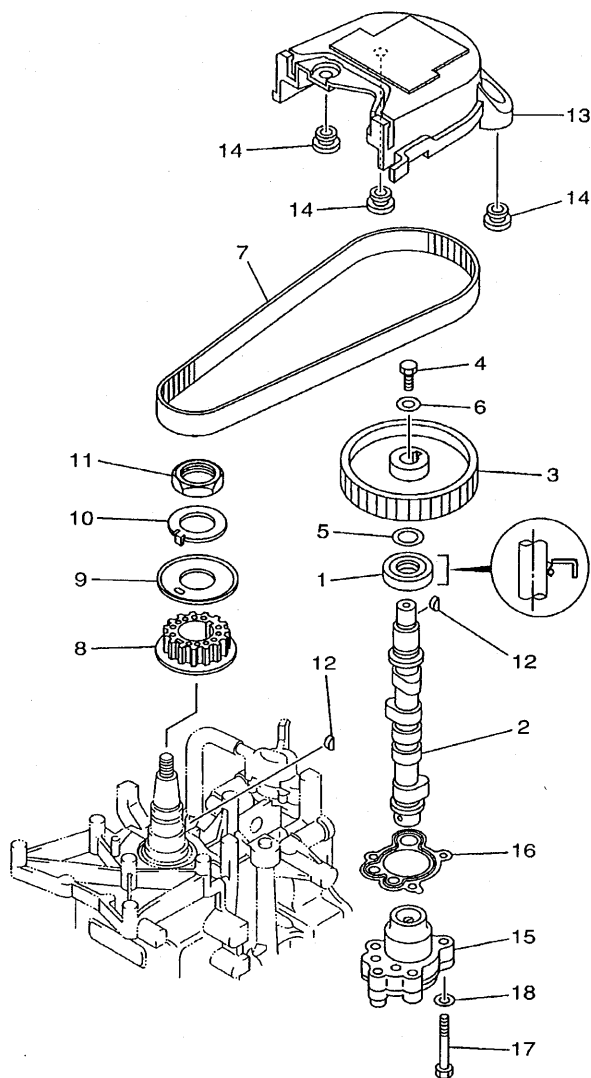
REF. NO.	PART NO. NO. PIECES	DESCRIPTION DESCRIPTION	FSMH	FSMH	SAV	FSW	REMARKS REMARQUES
1	68T-13641-00-1S	MANIFOLD 1	1	1	1		MH
		TUBULURE 1					
	68T-13641-10-1S	MANIFOLD 1				1	W
		TUBULURE 1					
2	650-24378-00	.PIPE, JOINT 4	1	1	1	1	
		.DURITE RACCORDEMENT 4					
3	68T-13645-00	GASKET, MANIFOLD 1	1	1	1	1	
		JOINT, TUBULURE 1					
4	97013-06035	BOLT	3	3	3	3	
		BOULON					
5	92903-06600	WASHER, PLATE	3	3	3	3	
		RONDELLE, PLATE					
6	97013-06025	BOLT	2	2	2	2	
		BOULON					
7	92903-06600	WASHER, PLATE	2	2	2	2	
		RONDELLE, PLATE					
8	91690-50014	PIN, SPRING	2	2	2	2	
		GOUPILLE, ELASTIQUE					
9	90445-09074	HOSE (L130)	1	1	1	1	
		DURITE (L130)					
10	68T-13646-A0	GASKET, MANIFOLD 2	2	2	2	2	
		JOINT, TUBULURE 2					
11	68T-14271-00	INSULATOR	1	1	1	1	
		ISOLATEUR					
12	68T-14440-00	SILENCER ASSY, INTAKE	1	1	1	1	
		SIENCIEUX D'ADMISSION					
13	93210-31MJ5	O-RING	1	1	1	1	
		JOINT TORIQUE					
14	90387-06M70	COLLAR	2	2	2	2	
		COLLERETTE					
15	97595-06585	BOLT, WITH WASHER	2	2	2	2	
		VIS HEXAGONAL AVC RONDELLE					
16	68T-12483-00	PIPE 3	1	1	1	1	
		DURITE 3					
17	90465-08M99	CLAMP	1	1	1	1	
		BRIDE					
18	6H4-41271-01	KNOB, CHOKE	1	1	1	1	
		BOUTON DE STARTER					
19	689-41273-00	GROMMET	1	1	1	1	
		PASSE-FIL					
20	68T-41256-00	ROD, CHOKE 1	1	1	1	1	
		TRINGLE 1, STARTER					
21	6J8-41262-00	JOINT, CHOKE LEVER	1	1	1	1	
		RACCORD, LEVIER DE STARTER					



FIG. 7 CARBURETOR

CARBURATEUR

B3

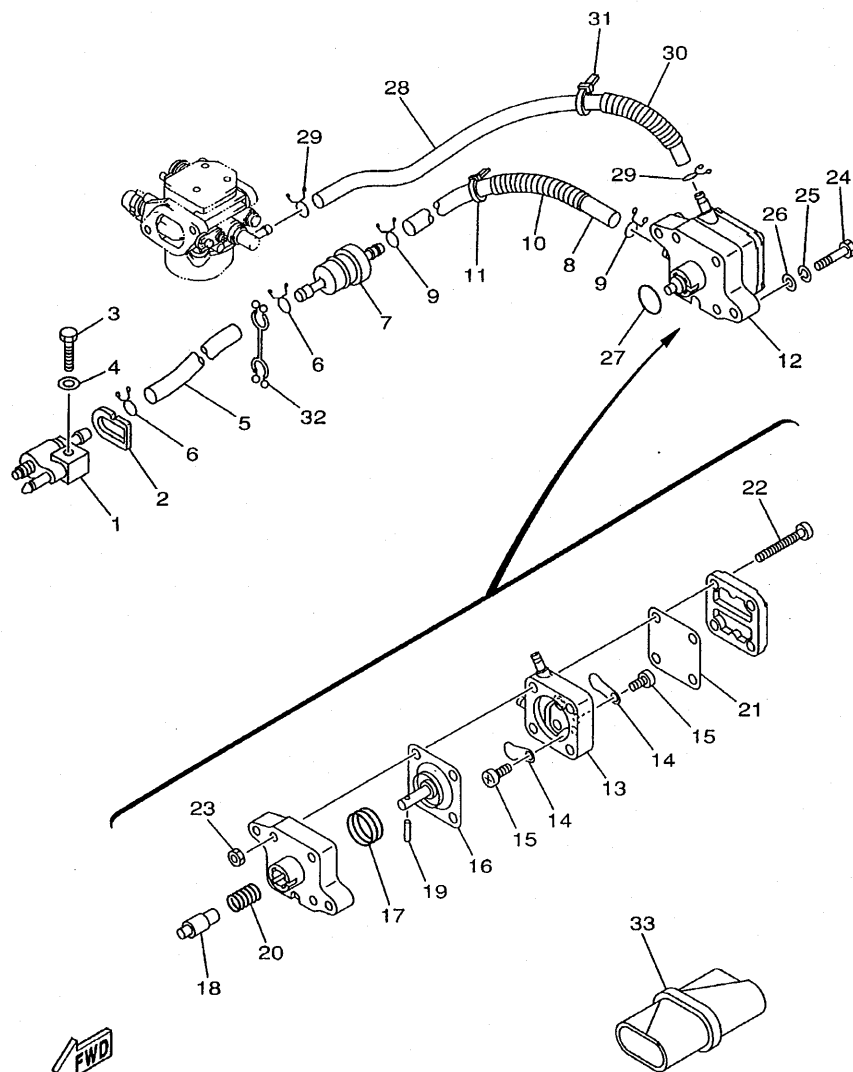



 68R0010-0080

FIG. 8 OIL PUMP

POMPE A HUILE

REF. NO.	PART NO. NO. PIECES	DESCRIPTION DESCRIPTION	F8MH	F8MH	SAV	F8W	REMARKS REMARQUES
1	93102-18M21	OIL SEAL JOINT SPY	1	1	1	1	
2	68T-12171-00	CAMSHAFT 1 ARBRE A CAMES 1	1	1	1	1	
3	66M-11537-00-94	GEAR, DRIVEN PIGNON SECONDAIRE	1	1	1	1	
4	97013-06016	BOLT BOULON	1	1	1	1	
5	90201-13201	WASHER, PLATE RONDELLE, PLATE	1	1	1	1	
6	90201-06M94	WASHER, PLATE RONDELLE, PLATE	1	1	1	1	
7	68T-46241-00	V-BELT COURROIE TRAPEZOIDALE	1	1	1	1	
8	68T-11536-00	GEAR, DRIVE ENGRENAGE, MENANT	1	1	1	1	
9	68T-11557-00	WASHER 1 RONDELLE 1	1	1	1	1	
10	6G8-11587-01	WASHER, LOCK RONDELLE, FREIN	1	1	1	1	
11	90170-24M09	NUT ECROU	1	1	1	1	
12	90280-03M01	KEY, WOODRUFF CLAVETTE, DEMI-LUNE	2	2	2	2	
13	68T-46297-00	COVER, DUST COUVERCLE, POUSSIERE	1	1	1	1	
14	90480-10627	GROMMET PASSE-FIL	3	3	3	3	
15	68T-13300-00	OIL PUMP ASSY POMPE A HUILE COMPLET	1	1	1	1	
16	68T-13329-00	GASKET, PUMP COVER JOINT, COUVERCLE DE POMPE	1	1	1	1	
17	97095-06030	BOLT BOULON	3	3	3	3	
18	92995-06600	WASHER RONDELLE	3	3	3	3	



68R0010-0090

FIG. 9 FUEL

CARBURANT

REF. NO.	PART NO. NO. PIECES	DESCRIPTION DESCRIPTION	F8MH	F8MH	SAV	F8W	REMARKS REMARQUES
1	6G1-24304-02	FUEL PIPE JOINT COMP. 1 DURITE RACCORDEMT. A ESSENCE	1	1	1	1	
2	61N-24329-00	SEAL JOINT	1	1	1	1	
3	97095-06025	BOLT BOULON	1	1	1	1	
4	92995-06600	WASHER RONDELLE	1	1	1	1	
5	90445-10M18	HOSE (L295) DURITE (L295)	1	1	1	1	
6	90467-09M09	CLIP JONC	2	2	2	2	
7	68T-24251-00	STRAINER 1 FILTRE 1	1	1	1	1	
8	90445-10M50	HOSE (L170) DURITE (L170)	1	1	1	1	
9	90467-09M09	CLIP JONC	2	2	2	2	
10	90446-14M66	HOSE DURITE	1	1	1	1	
11	90465-11M10	CLAMP BRIDE	1	1	1	1	
12	68T-24410-00	FUEL PUMP ASSY POMPE A ESSENCE	1	1	1	1	
13	66M-24413-01	.BODY 2 .CORPS 2	1	1	1	1	
14	6A0-24421-01	.VALVE, CHECK .SOUPAPE, RETENUE	2	2	2	2	
15	6E7-14325-00	.SCREW, PAN HEAD .VIS TETE CONIQUE	2	2	2	2	
16	66M-24411-00	.DIAPHRAGM .DIAPHRAGME	1	1	1	1	
17	66M-24423-00	.SPRING, DIAPHRAGM .RESSORT, DIAPHRAGME	1	1	1	1	
18	66M-13131-00	.PLUNGER .PLONGEUR	1	1	1	1	
19	66M-24374-00	.PIN .GOUPILLE	1	1	1	1	
20	66M-24454-00	.SPRING .RESSORT	1	1	1	1	
21	66M-24471-00	.DIAPHRAGM .DIAPHRAGME	1	1	1	1	
22	66M-24444-00	.SCREW .VIS	4	4	4	4	
23	95380-05600	.NUT .ECROU	4	4	4	4	
24	97095-06030	BOLT BOULON	2	2	2	2	
25	92995-06100	WASHER, SPRING RONDELLE, GROWER	2	2	2	2	
26	92995-06600	WASHER RONDELLE	2	2	2	2	
27	93210-20M65	O-RING JOINT TORIQUE	1	1	1	1	

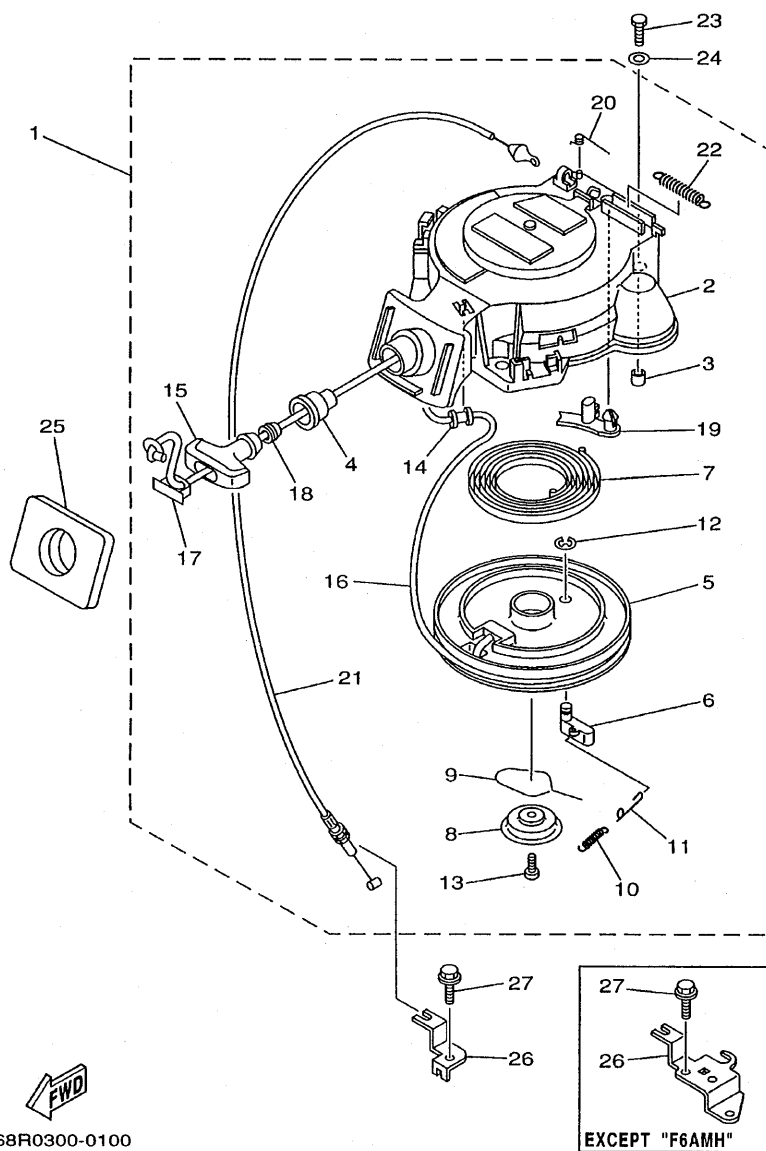
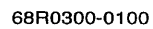


FIG. 10 STARTER

DEMARREUR

REF. NO.	PART NO. NO. PIECES	DESCRIPTION DESCRIPTION	F6MH	F8MH	SAV	F8W	REMARKS REMARQUES
1	68T-15710-01	STARTER ASSY DEMARREUR COMPLET	1	1	1	1	
2	68T-15711-01	.CASE, STARTER .CARTER DE DEMARREUR	1	1	1	1	
3	67D-15764-00	.COLLAR 1 .COLLERETTE 1	3	3	3	3	
4	68T-15795-00	.GUIDE, ROPE .GUIDE DE CABLE	1	1	1	1	
5	63V-15714-00	.DRUM, SHEAVE .TAMBOUR, POULIE	1	1	1	1	
6	63V-15741-00	.PAWL, DRIVE .CLIQUET, ENTRAINEMENT	1	1	1	1	
7	63V-15713-00	.SPRING, STARTER .RESSORT DE DEMARREUR	1	1	1	1	
8	68T-15716-00	.PLATE, DRIVE .PLAQUE, ENTRAINEMENT	1	1	1	1	
9	63V-15705-01	.SPRING, DRIVE PAWL .RESSORT DE CLIQUET	1	1	1	1	
10	63V-15767-01	.SPRING .RESSORT	1	1	1	1	
11	68T-15784-00	.SPRING, RETURN .RESSORT, RAPPEL	1	1	1	1	
12	63V-15744-00	.CIRCLIP .CIRCLIP	1	1	1	1	
13	68T-15793-00	.SCREW .VIS	1	1	1	1	
14	68T-15764-00	.COLLAR 1 .COLLERETTE 1	1	1	1	1	
15	6G1-15755-00	.HANDLE, STARTER .POIGNEE, DE DEMARREUR	1	1	1	1	
16	*	.WIRE, STARTER (L:1800MM) .CABLE DE DEMARREUR (L:1800MM)	1	1	1	1	
17	6G1-15779-00	.COVER .COUVERCLE	1	1	1	1	
18	6A0-15789-00	.DAMPER .AMORTISSEUR	1	1	1	1	
19	66T-15794-00	.STOPPER .BUTEE	1	1	1	1	
20	66T-15734-00	.SPRING, RETURN .RESSORT, RAPPEL	1	1	1	1	
21	68T-15770-00	.CABLE COMP., STARTER STOP .CABLE, BUTEE DE DEMAR	1	1	1	1	
22	66T-15731-00	.SPRING, RETURN .RESSORT, RAPPEL	1	1	1	1	
23	97095-06020	BOLT BOULON	3	3	3	3	
24	92995-06600	WASHER RONDELLE	3	3	3	3	
25	68T-15762-00	SEAL, RUBBER 2 JOINT CAOUTCHOUC 2	1	1	1	1	
* CUT FROM 50M ROLLS, PART NO. 90890-44373, CUTTING LENGTH 1.8M							
* A PRELEVER SUR BOBINE 50M , REFERENCE 90890-44373, LONGUEUR DE COUPE 1.8M							



DEMARREUR

C1

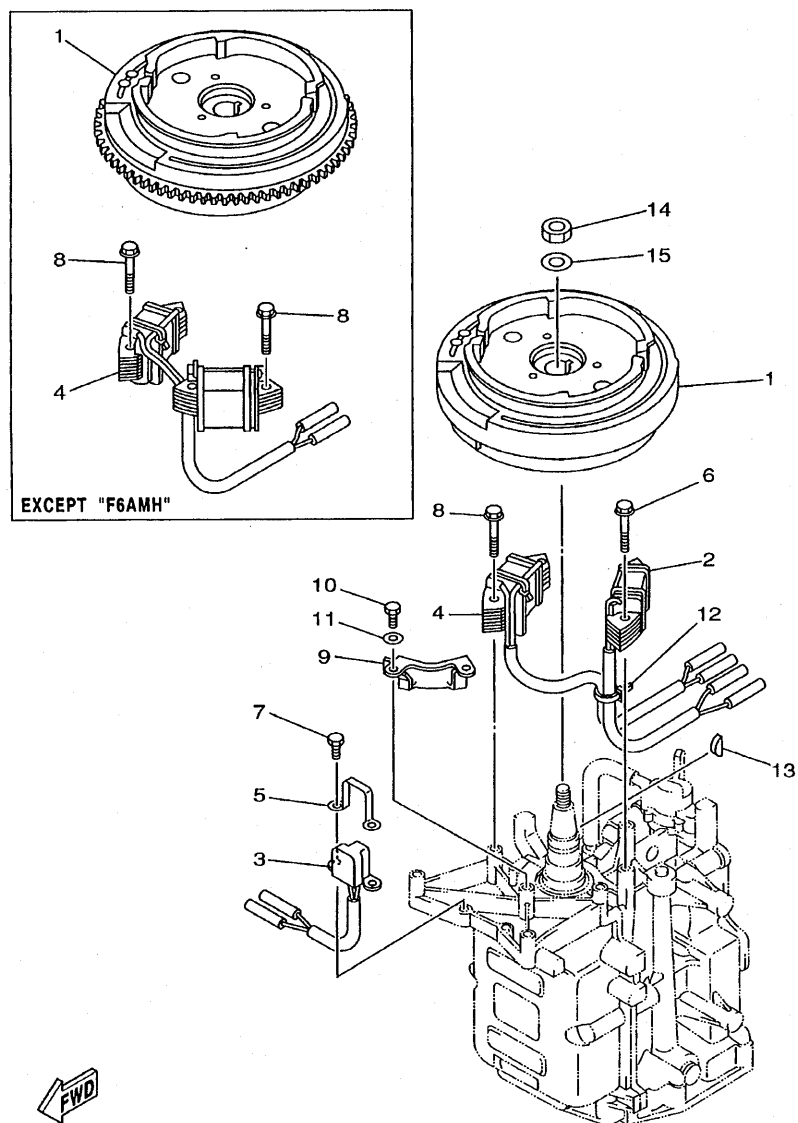


FIG. 11 GENERATOR

GENERATRICE

REF. NO.	PART NO. NO. PIECES	DESCRIPTION DESCRIPTION	F6MH	F8MH	SAV	F8W	REMARKS REMARQUES
1	68T-85550-01	ROTOR ASSY ROTOR CPLT	1				
	68T-85550-11	ROTOR ASSY ROTOR CPLT		1	1	1	
2	68T-85520-00	COIL, CHARGE BOBINE, CHARGE	1	1	1	1	
3	68T-85580-01	COIL, PULSER BOBINE, PULSEUR	1	1	1	1	
4	68T-85533-00	COIL, LIGHTING BOBINE, ECLAIRAGE	1				
	68T-85533-10	COIL, LIGHTING BOBINE, ECLAIRAGE		1	1	1	
5	6H2-85582-00	ATTACHMENT, PULSER SUPPORT, PULSEUR	1	1	1	1	
6	90119-06014	BOLT, WITH WASHER BOULON, AVEC RONDELLE	2	2	2	2	
7	97095-05010	BOLT BOULON	2	2	2	2	
8	90119-06MA1	BOLT, WITH WASHER BOULON, AVEC RONDELLE	2				
	90119-06MA1	BOLT, WITH WASHER BOULON, AVEC RONDELLE		4	4	4	
9	68T-81328-00	CLAMP COLLIER	1				
10	97013-06012	BOLT BOULON	2				
11	92903-06600	WASHER, PLATE RONDELLE, PLATE	2				
12	90465-11M10	CLAMP BRIDE	1	1	1	1	
13	90280-04M06	KEY, WOODRUFF CLAVETTE, DEMI-LUNE	1	1	1	1	
14	90170-12066	NUT ECROU	1	1	1	1	
15	90201-12472	WASHER, PLATE RONDELLE, PLATE	1	1	1	1	



68R0300-1110

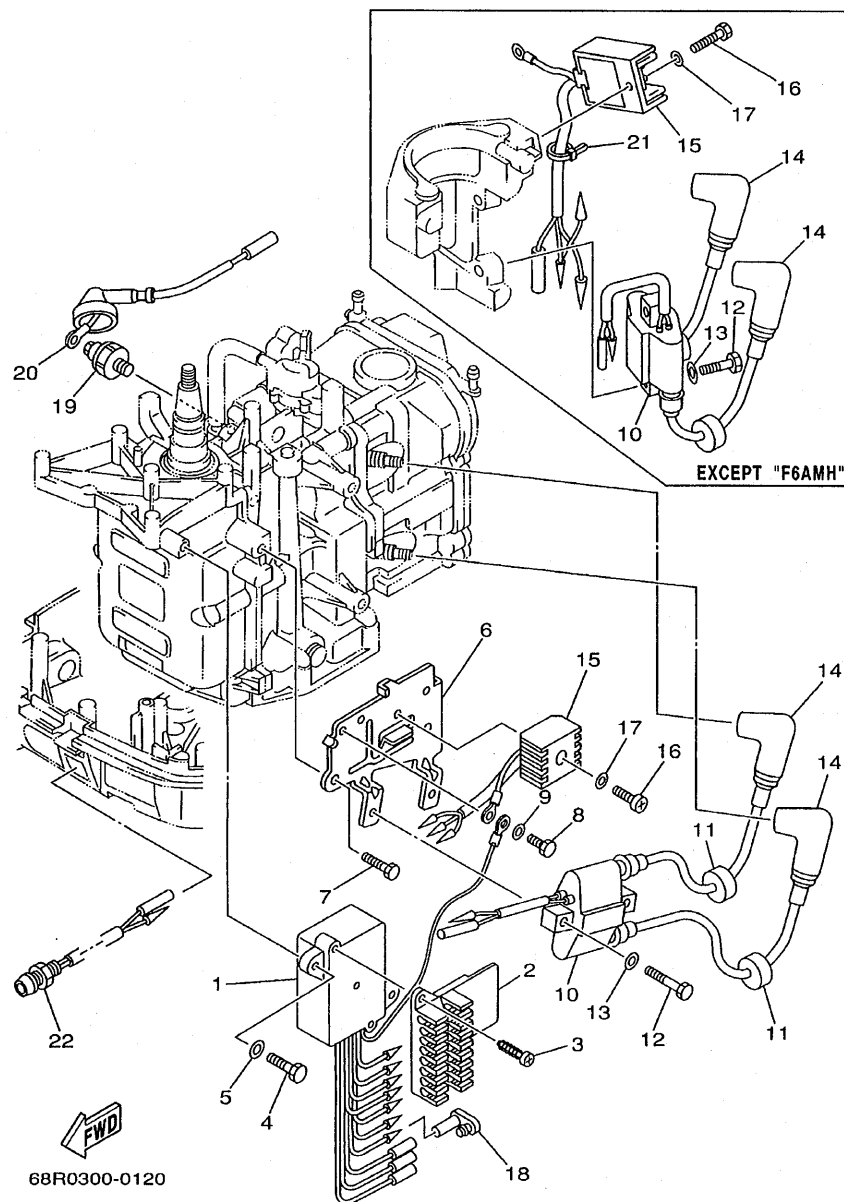


FIG. 12 ELECTRICAL 1

PARTIE ELECTRIQUE 1

REF. NO.	PART NO. NO. PIECES	DESCRIPTION DESCRIPTION	F6MH	F8MH	SAV	F8W	REMARKS REMARQUES
1	68R-85540-00	C.D.I. UNIT ASSY BLOC C.D.I.	1		1		F6A
	69F-85540-00	C.D.I. UNIT ASSY BLOC C.D.I.			1		F6B
	68T-85540-00	C.D.I. UNIT ASSY BLOC C.D.I.		1	1	1	F8C
2	68T-82522-00	CLAMP, COUPLER BRIDE, DE CONNECTEUR	1	1	1	1	
3	97780-40512	SCREW, TAPPING VIS, TETE FRAISEE	2	2	2	2	
4	97095-06020	BOLT BOULON	2	2	2	2	
5	92995-06600	WASHER RONDELLE	2	2	2	2	
6	68T-85542-00	BRACKET SUPPORT	1				
7	97095-08012	BOLT BOULON	2				
8	97095-06012	BOLT BOULON	1	1	1	1	
9	92995-06600	WASHER RONDELLE	1	1	1	1	
10	680-85570-00	IGNITION COIL ASSY BOBINE D'ALLUMAGE (ENS.)	1	1	1	1	
11	90480-25161	GROMMET PASSE-FIL	2	2	2	2	
12	97095-06025	BOLT BOULON	2	2	2	2	
13	92995-06600	WASHER RONDELLE	2	2	2	2	
14	6E3-82370-21	PLUG CAP ASSY ANTIPARASITE	2	2	2	2	
15	664-81970-61	RECTIFIER ASSY REDRESSEUR COMPLET	1				
	68T-81960-00	RECTIFIER & REGULATOR ASSY REDRESSEUR REGULATEUR CPLT		1	1	1	
16	97880-05025	SCREW, PAN HEAD VIS, TETE TRONCONIQUE	1				
	97095-06012	BOLT BOULON		1	1	1	
17	92990-05600	WASHER, PLATE RONDELLE, PLATE	1				
	92995-06600	WASHER RONDELLE		1	1	1	
18	6A0-82119-00	COVER, LEAD WIRE GARNITURE, FIL	1				
19	67F-82504-00	OIL PRESSURE SWITCH ASSY CONTACTEUR DE PRESSION D'HUILE	1	1	1	1	
20	68T-82127-10	WIRE, LEAD 2 FIL 2	1	1	1	1	
21	90465-11M10	CLAMP BRIDE		1	1	1	
22	68T-85410-00	EMERGENCY SIGNAL LIGHT ASSY FEU DE DETRESSE	1	1	1	1	

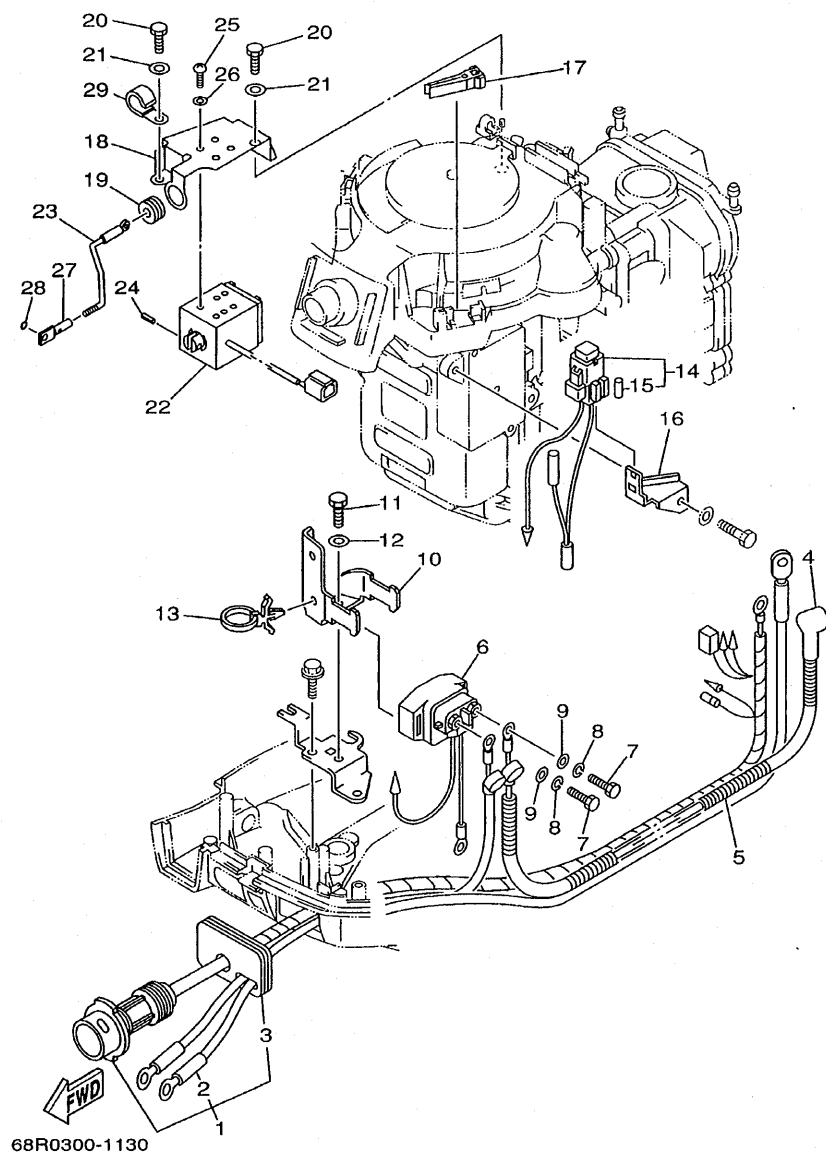


FIG. 13 ELECTRICAL 2

PARTIE ELECTRIQUE 2

REF. NO.	PART NO. NO. PIECES	DESCRIPTION DESCRIPTION	F6MH	F8MH	SAV	F8W	REMARKS REMARQUES
1	68T-82580-00	WIRE HARNESS ASSY 2 FAISCEAU DE FILS 2 CPLT				1	
2	68T-82105-00	WIRE HARNESS FAISCEAU DE FILS				1	
3	68T-42724-40	GROMMET PASSE-FIL				1	
4	6G8-82117-00	WIRE, LEAD FIL				1	
5	90446-10M86	HOSE DURITE				1	
6	68T-81940-00	STARTER RELAY ASSY LANCEUR RELAIS (ENS.)				1	
7	97095-06010	BOLT BOULON				2	
8	92995-06100	WASHER, SPRING RONDELLE, GROWER				2	
9	92995-06600	WASHER RONDELLE				2	
10	68T-81945-00	PLATE, SWITCH FITTING PLAQUE, FIXATION DU RELAIS				1	
11	97095-06012	BOLT BOULON				1	
12	92995-06600	WASHER RONDELLE				1	
13	90465-12M56	CLAMP BRIDE				1	
14	68T-82150-00	FUSE HOLDER ASSY SUPPORT DE FUSIBLE				1	
15	66V-82151-00	FUSE (10A-BL) FUSIBLE (10A-BL)				2	
16	68T-82171-00	STAY, FUSE BOX SUPPORT, BOITE A FUSIBLES				1	
17	67F-2812A-00	PULLER, FUSE TENDEUR, FUSIBLE				1	
18	68T-86112-00	STAY, SOLENOID SUPPORT, SOLENOIDE				1	
19	90480-13018	GROMMET PASSE-FIL				1	
20	97095-06012	BOLT BOULON				2	
21	92995-06600	WASHER RONDELLE				2	
22	68T-86111-00	COIL, SOLENOID BOBINE				1	
23	68T-41237-00	JOINT, LINK RACCORD				1	
24	91690-30010	PIN, SPRING GOUPILLE, ELASTIQUE				1	
25	97880-04008	SCREW, PAN HEAD VIS, TETE TRONCONIQUE				4	
26	92990-04600	WASHER, PLATE RONDELLE, PLATE				4	
27	68T-86117-00	HOOK, WIRE PULL CROCHET, TENSION DE CABLE				1	

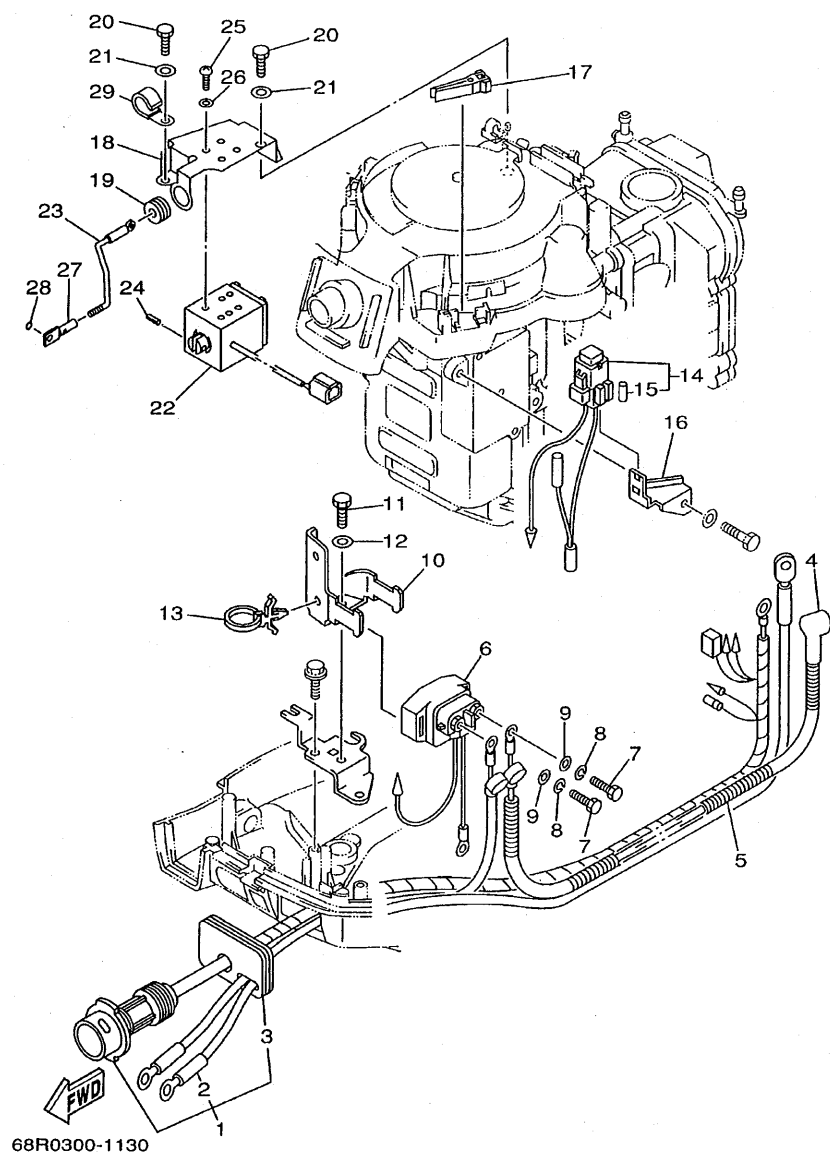


FIG. 13 ELECTRICAL 2

[illegible]

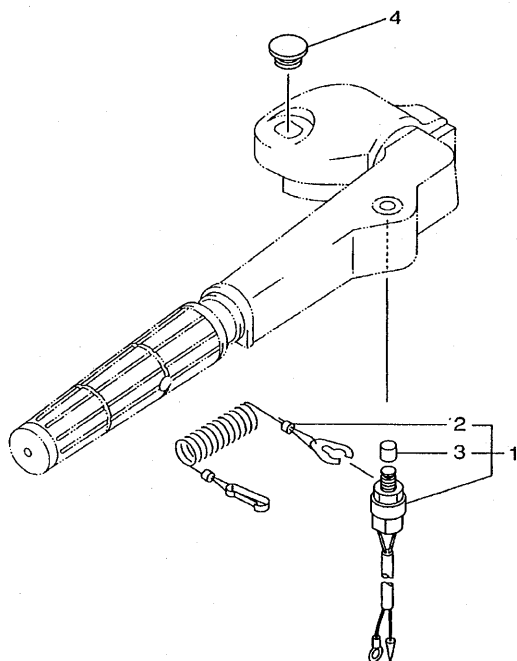
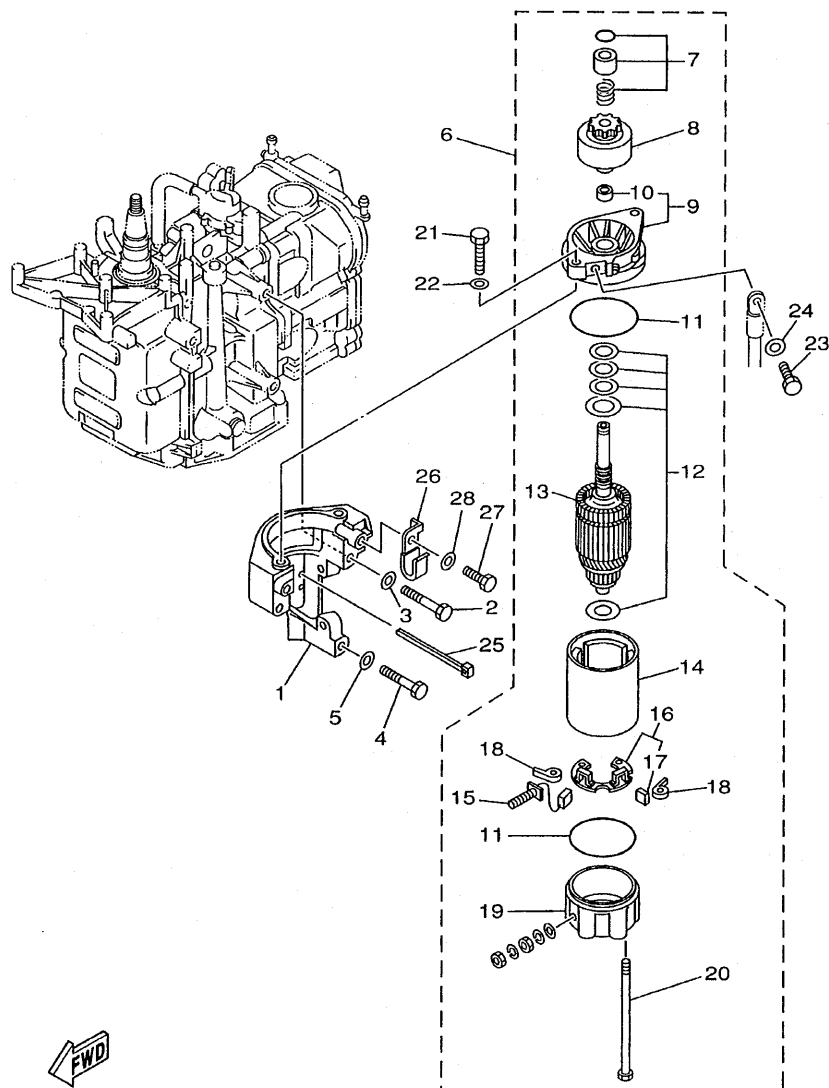


FIG. 14 ELECTRICAL 3

PARTIE ELECTRIQUE 3

[illegible]

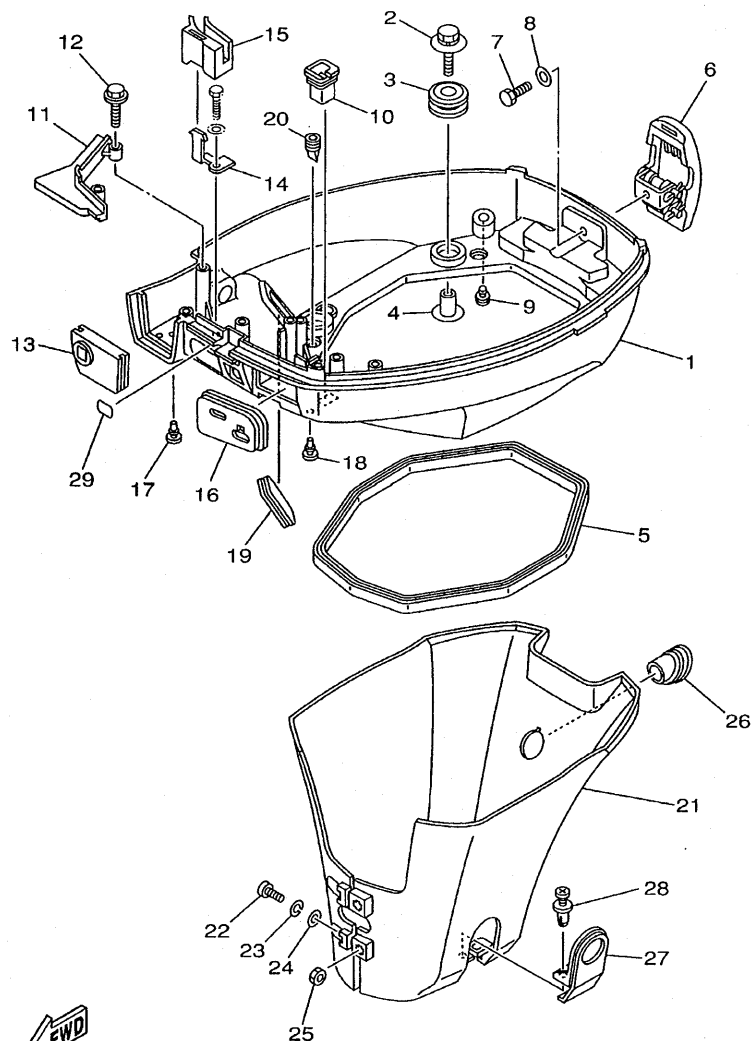


68R0010-0150

FIG. 15 STARTING MOTOR

DEMARREUR ELECTRIQUE

REF. NO.	PART NO. NO. PIECES	DESCRIPTION DESCRIPTION	F8M/H	F8M/H	SAV	F8W	REMARKS REMARQUES
1	68T-81822-00-94	BRACKET, STARTING MOTOR SUPPORT, DEMARREUR ELECTRIQUE		1	1	1	
2	97013-08055	BOLT BOULON		2	2	2	
3	92903-08600	WASHER, PLATE RONDELLE, PLATE		2	2	2	
4	97013-08040	BOLT BOULON		1	1	1	
5	92903-08600	WASHER, PLATE RONDELLE, PLATE		1	1	1	
6	68T-81800-00	STARTING MOTOR ASSY DEMARREUR ELECTRIQUE COMPLET				1	
7	68T-81857-00	.RETAINER .ARRETOIR				1	
8	689-81807-12	.GEAR ASSY, STARTING MOTOR .PIGNON, DEMARREUR ELECTRIQUE				1	
9	6F5-81830-11	.FRONT BRACKET ASSY .SUPPORT AVANT				1	
10	689-81831-00	.METAL, FRONT .METAL, AVANT				1	
11	689-81847-11	.O-RING JOINT TORIQUE				2	
12	689-81809-11	.WASHER KIT JEU DE RONDELLES				1	
13	689-81850-12	.ARMATURE ASSY .INDUIT				1	
14	689-81810-11	.STATOR ASSY .STATOR COMPLET				1	
15	689-81811-11	.BRUSH 1 .CHARBON 1				1	
16	689-81840-11	.BRUSH HOLDER ASSY .SUPPORT DE CHARBON				1	
17	689-81812-11	.BRUSH 2 .CHARBON 2				1	
18	689-81813-10	.SPRING, BRUSH .RESSORT, DE CHARBON				2	
19	689-81820-11	.REAR BRACKET ASSY .SUPPORT ARRIERE COMPLET				1	
20	689-81826-10	.BOLT .BOULON				2	
21	97013-08025	BOLT BOULON				2	
22	92903-08600	WASHER, PLATE RONDELLE, PLATE				2	
23	97095-08016	BOLT BOULON				1	
24	92995-08600	WASHER RONDELLE				1	
25	90465-11M10	CLAMP BRIDE		1	1	1	
26	90465-08M99	CLAMP BRIDE		1	1	1	
27	97095-06012	BOLT BOULON		1	1	1	

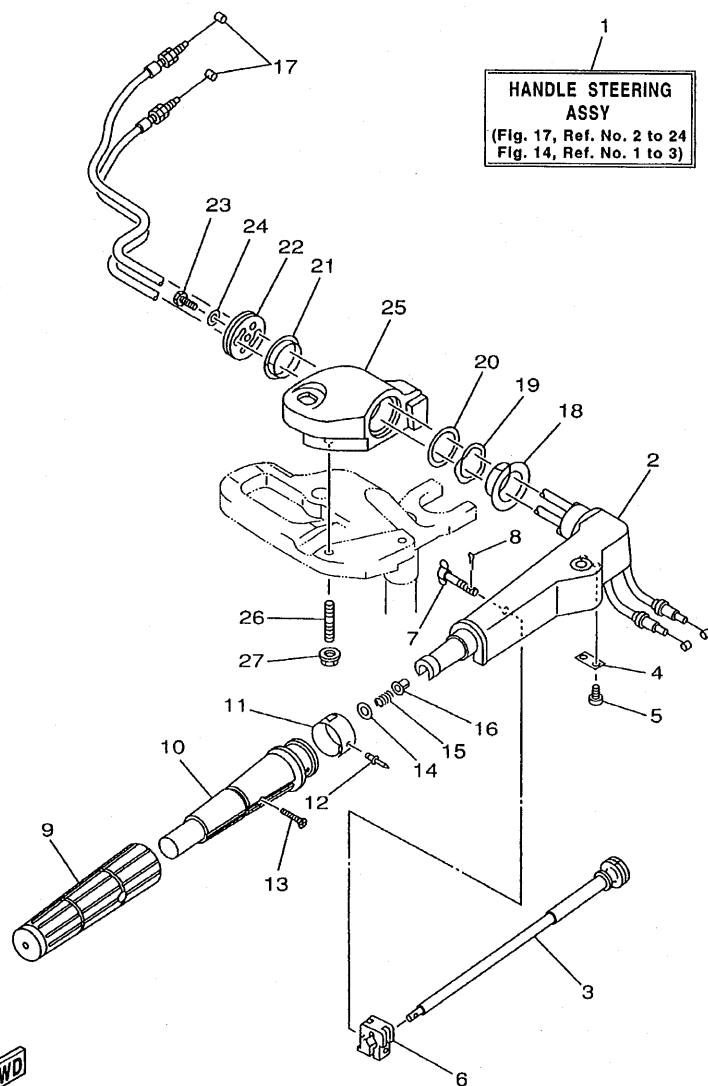


68R0010-0160

FIG. 16 BOTTOM COWLING

CAPOT INFERIEUR

REF. NO.	PART NO. NO. PIECES	DESCRIPTION DESCRIPTION	F6MH	F8MH	SAV	F8W	REMARKS REMARQUES
1	68T-42710-00-4D	BOTTOM COWLING ASSY ENS. EMBASE (REF.NO. 12 FIG.10, REF.NO. 27 FIG.18, REF.NO. 7, 12 FIG.19, REF.NO. 12, 17)	1	1	1	1	
2	68F-85119-00	BOLT BOULON	4	4	4	4	
3	90480-21M82	GROMMET PASSE-FIL	4	4	4	4	
4	68F-86129-00	COLLAR COLLERETTE	4	4	4	4	
5	68T-42716-00	RUBBER, SEAL 1 JOINT EN CAOUTCHOUC 1	1	1	1	1	
6	68T-42801-00	COWLING CLAMP COMP. BRIDE DE CAPOT COMP.	1	1	1	1	
7	97095-06012	BOLT BOULON	1	1	1	1	
8	92995-06600	WASHER RONDELLE	1	1	1	1	
9	6H3-44391-01	NIPPLE, HOSE RACCORD D'ESSENCE	1	1	1	1	
10	682-42727-00	GROMMET PASSE-FIL	1	1	1	1	
11	68T-42738-00-4D	PLATE, FITTING ETRIER	1	1	1	1	
12	90109-06M81	BOLT BOULON	2	2	2	2	
13	68T-42725-00	GROMMET PASSE-FIL	1	1	1		
	68T-42725-10	GROMMET PASSE-FIL				1	
14	68T-26393-00	HOLDER SUPPORT	1	1	1		
15	68T-26367-00	PROTECTOR PROTECTEUR	1	1	1		
16	68T-42724-00	GROMMET PASSE-FIL	1	1	1		
17	90480-06M19	GROMMET PASSE-FIL	2	2	2		
18	90480-06M19	GROMMET PASSE-FIL	1	1	1	1	
19	6H4-42726-00	GROMMET PASSE-FIL	1	1	1	1	
20	65W-42717-00	RUBBER, SEAL 2 JOINT EN CAOUTCHOUC 2	2	2	2	2	
21	68T-42741-00	APRON CAPOT LATERAL	1	1	1	1	
22	97880-06030	SCREW, PAN HEAD VIS, TETE TRONCONIQUE	2	2	2	2	
23	92990-06100	WASHER, SPRING RONDELLE, GROWER	2	2	2	2	
24	92990-06600	WASHER, PLATE RONDELLE, PLATE	2	2	2	2	

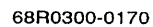


68R0300-0170

FIG. 17 STEERING

DIRECTION

REF. NO.	PART NO. NO. PIECES	DESCRIPTION DESCRIPTION	FSMH	FSMH	SAV	F8W	REMARKS REMARQUES
1	68T-W0084-00-4D	HANDLE STEERING ASSY BARRE FRANCHE (ENS.)	1	1	1		
2	63V-42111-00-4D	HANDLE, STEERING POIGNEE	1	1	1		
3	6G1-42138-01	LEVER, THROTTLE LEVIER, ACCELERATEUR	1	1	1		
4	6E0-42159-02	STAY SUPPORT	1	1	1		
5	97885-05012	SCREW, PAN HEAD VIS, TETE TRONCONIQUE	2	2	2		
6	6G1-42126-00	FRICITION, STEERING HANDLE GRIP CUVETTE, POIGNEE DE DIRECTION	1	1	1		
7	6G1-42125-01	BOLT, FRICTION ADJUSTING BOULON	1	1	1		
8	91490-16010	PIN, COTTER GOUPILLE, FENDUE	1	1	1		
9	67D-42177-00	RUBBER, HANDLE CAOUTCHOUC, POIGNEE	1	1	1		
10	67D-42119-00	GRIP, STEERING HANDLE POIGNEE, BARRE FRANCHE	1	1	1		
11	68R-42137-00	INDICATOR, THROTTLE INDICATEUR, ACCELERATION	1		1		F6A
	69F-42137-00	INDICATOR, THROTTLE INDICATEUR, ACCELERATION			1		F6B
	68T-42137-00	INDICATOR, THROTTLE INDICATEUR, ACCELERATION		1	1		F8C
12	90269-02M09	RIVET RIVET	1	1	1		
13	90149-05M13	SCREW VIS	1	1	1		
14	92903-10600	WASHER, PLATE RONDELLE, PLATE	1	1	1		
15	90501-23215	SPRING, COMPRESSION RESSORT, COMPRESSION	1	1	1		
16	90386-08032	BUSH DOUILLE	1	1	1		
17	68T-26301-01	THROTTLE CABLE ASSY CABLE D'ACCELERATEUR	2	2	2		
18	90386-34M97	BUSH DOUILLE	1	1	1		
19	90206-36M21	WASHER, WAVE RONDELLE, ONDULEE	1	1	1		
20	90202-36M55	WASHER, PLATE RONDELLE, PLATE	1	1	1		
21	90386-33M96	BUSH DOUILLE	1	1	1		
22	68T-42131-00	COVER, HANDLE STEERING COUVERCLE	1	1	1		
23	97075-06025	BOLT BOULON	1	1	1		
24	92995-06600	WASHER RONDELLE	1	1	1		
25	68T-42121-00-4D	BRACKET SUPPORT	1	1	1		



DIRECTION

D5

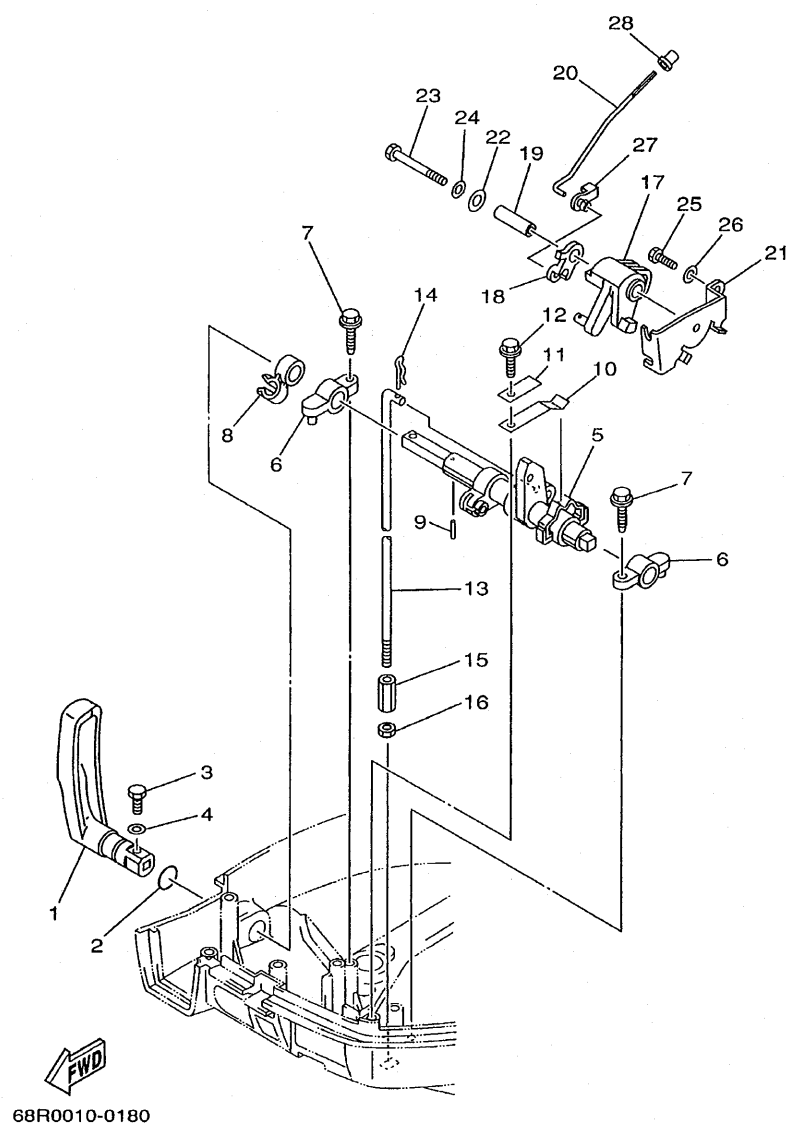
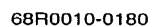


FIG. 18 CONTROL 1

COMMANDE 1

REF. NO.	PART NO. NO. PIECES	DESCRIPTION DESCRIPTION	F6MH	F8MH	SAV	F8W	REMARKS REMARQUES
1	68T-44111-00	HANDLE, GEAR SHIFT POIGNEE, LEVIER D'EMBRAYAGE	1	1	1		
2	93210-12327	O-RING JOINT TORIQUE	1	1	1		
3	97095-05016	BOLT BOULON	1	1	1		
4	92995-05600	WASHER RONDELLE	1	1	1		
5	68T-44121-01	LEVER, SHIFT ROD LEVIER, TIGE D'INVERSION	1	1	1		
6	6G1-41662-01-94	BRACKET SUPPORT	2	2	2		
7	90109-06M81	BOLT BOULON	2	2	2		
8	90464-10M60	CLAMP BRIDE	1	1	1		
9	91690-30014	PIN, SPRING GOUPILLE, ELASTIQUE	1	1	1		
10	65W-44116-00	SPRING RESSORT	1	1	1		
11	66R-44114-00	STOPPER PLAQUETTE	1	1	1		
12	90109-06M86	BOLT BOULON	1	1	1		
13	68T-44143-00	ROD, SHIFT TIGE D'EMBRAYAGE	1	1	1		S
	68T-44143-10	ROD, SHIFT TIGE D'EMBRAYAGE	1	1	1		L
14	90468-18001	CLIP JONC	1	1	1		
15	90170-06015	NUT ECROU	1	1	1		
16	95380-06700	NUT ECROU	1	1	1		
17	68T-41638-00	PULLEY POULIE	1	1	1		
18	68R-41283-00	LEVER, FREE ACCEL. LEVIER	1		1		F6A,F6B
	68T-41283-00	LEVER, FREE ACCEL. LEVIER		1	1		F8C
19	90387-06M59	COLLAR COLLERETTE	1	1	1		
20	68T-41211-00	LINK, ACCEL. BIELLETTTE, ACCELERATION	1	1	1		F6A,F8C
	69F-41211-00	LINK, ACCEL. BIELLETTTE, ACCELERATION			1		F6B
21	68T-14497-00	STAY, THROTTLE WIRE SUPPORT DE BOISSEAU	1	1	1		
22	90201-06M62	WASHER, PLATE RONDELLE, PLATE	1	1	1		
23	97095-06045	BOLT BOULON	1	1	1		
24	92995-06600	WASHER RONDELLE	1	1	1		



COMMANDE 1

D7

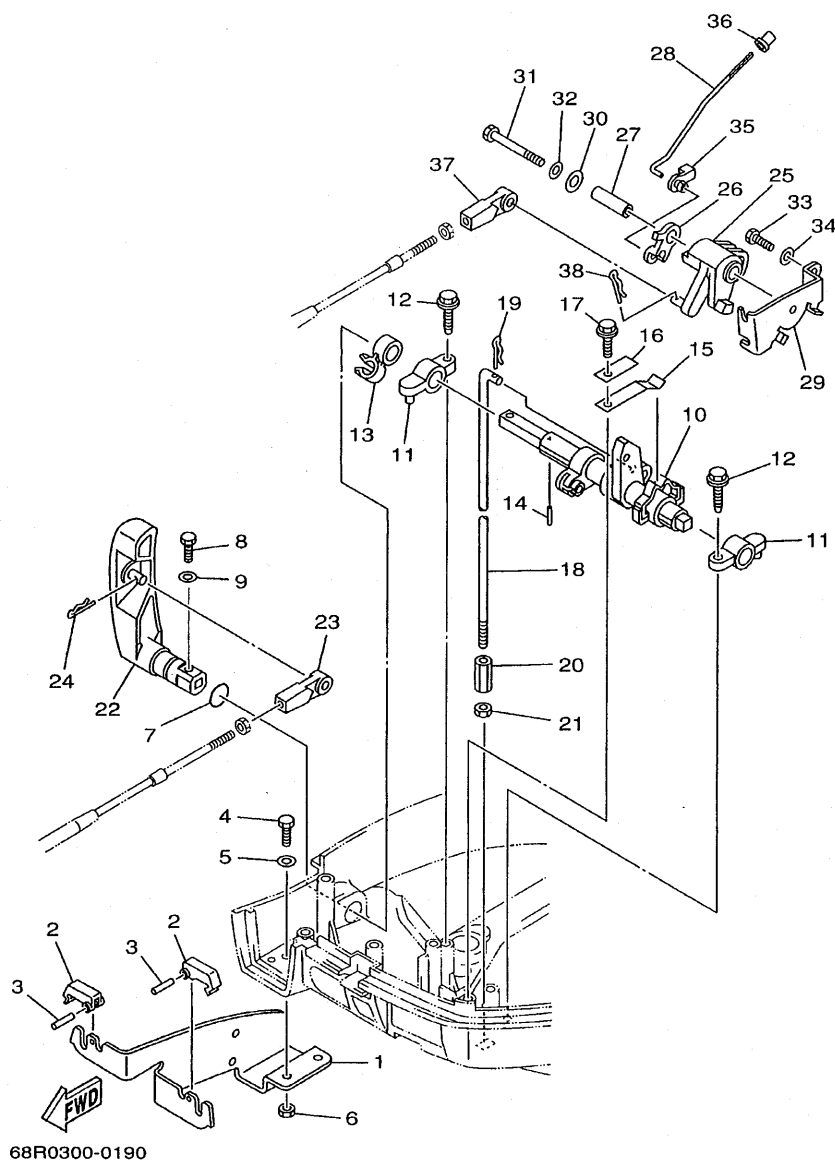


FIG. 19 CONTROL 2

COMMANDE 2

REF. NO.	PART NO. NO. PIECES	DESCRIPTION DESCRIPTION	F6MH	F8MH	SAV	F8W	REMARKS REMARQUES
1	68T-48531-00	BRACKET, REMOTE CONTROL 1 ETRIER 1, COMMANDE A DISTANCE				1	
2	682-48538-50	CLAMP, CABLE 1 COLLIER				2	
3	91690-30012	PIN, SPRING GOUPILLE, ELASTIQUE				2	
4	97095-06012	BOLT BOULON				2	
5	92995-06600	WASHER RONDELLE				2	
6	95380-06600	NUT, HEXAGON ECROU				2	
7	93210-12327	O-RING JOINT TORIQUE				1	
8	97095-05016	BOLT BOULON				1	
9	92995-05600	WASHER RONDELLE				1	
10	68T-44121-01	LEVER, SHIFT ROD LEVIER, TIGE D'INVERSION				1	
11	6G1-41662-01-94	BRACKET SUPPORT				2	
12	90109-06M81	BOLT BOULON				2	
13	90464-10M60	CLAMP BRIDE				1	
14	91690-30014	PIN, SPRING GOUPILLE, ELASTIQUE				1	
15	65W-44116-00	SPRING RESSORT				1	
16	66R-44114-00	STOPPER PLAQUETTE				1	
17	90109-06M86	BOLT BOULON				1	
18	68T-44143-00	ROD, SHIFT TIGE D'EMBAYAGE				1	S
19	90468-18001	CLIP JONC				1	
20	90170-06015	NUT ECROU				1	
21	95380-06700	NUT ECROU				1	
22	68T-44111-10	HANDLE, GEAR SHIFT POIGNEE, LEVIER D'EMBAYAGE				1	
23	663-48344-00	CABLE END, REMOTE CONTROL CHAPE CABLE				1	
24	90468-18008	CLIP JONC				1	
25	68T-41638-00	PULLEY POULIE				1	
26	68T-41283-00	LEVER, FREE ACCEL. LEVIER				1	
27	90387-06M59	COLLAR COLLERETTE				1	

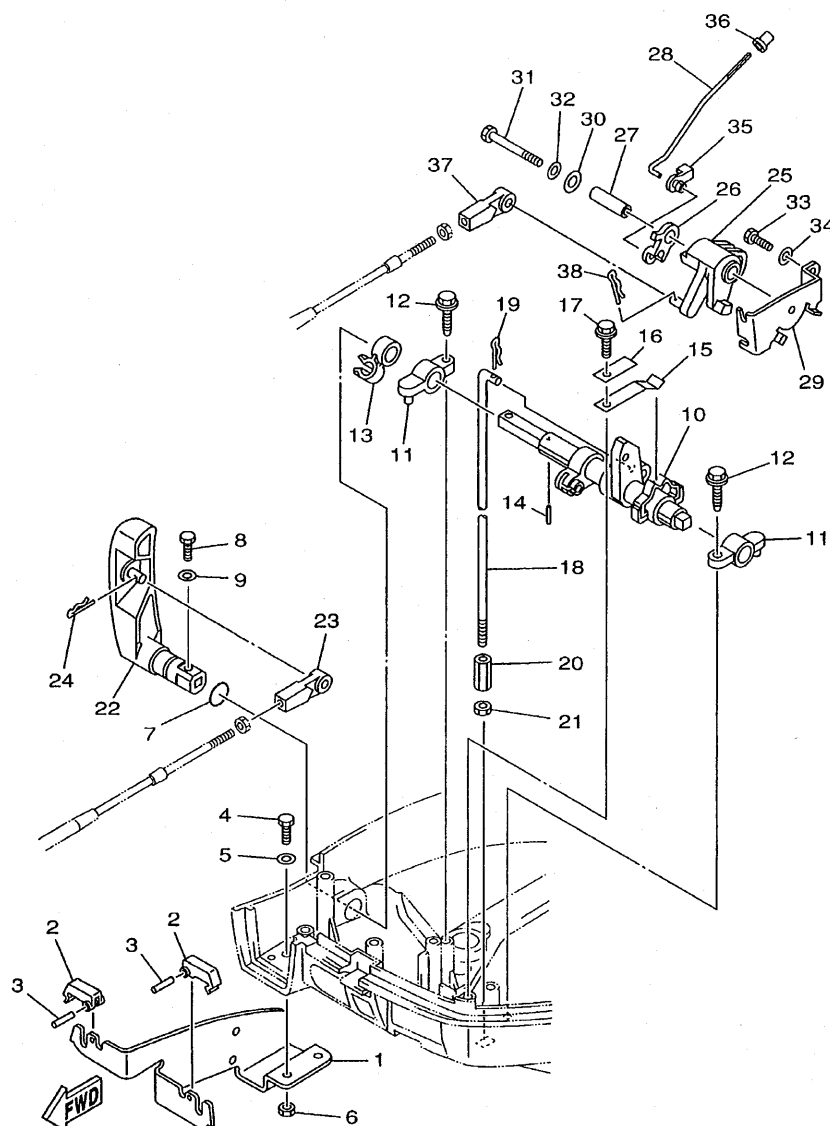
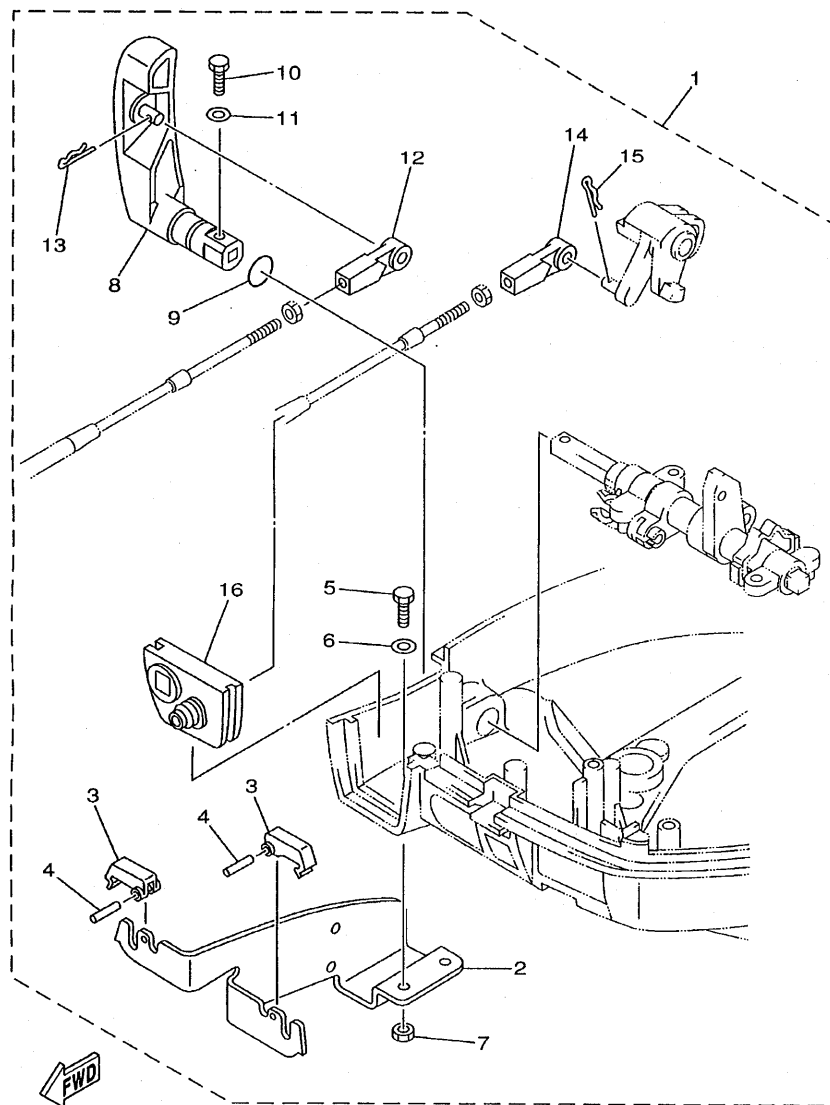


FIG. 19 CONTROL 2

[illegible]

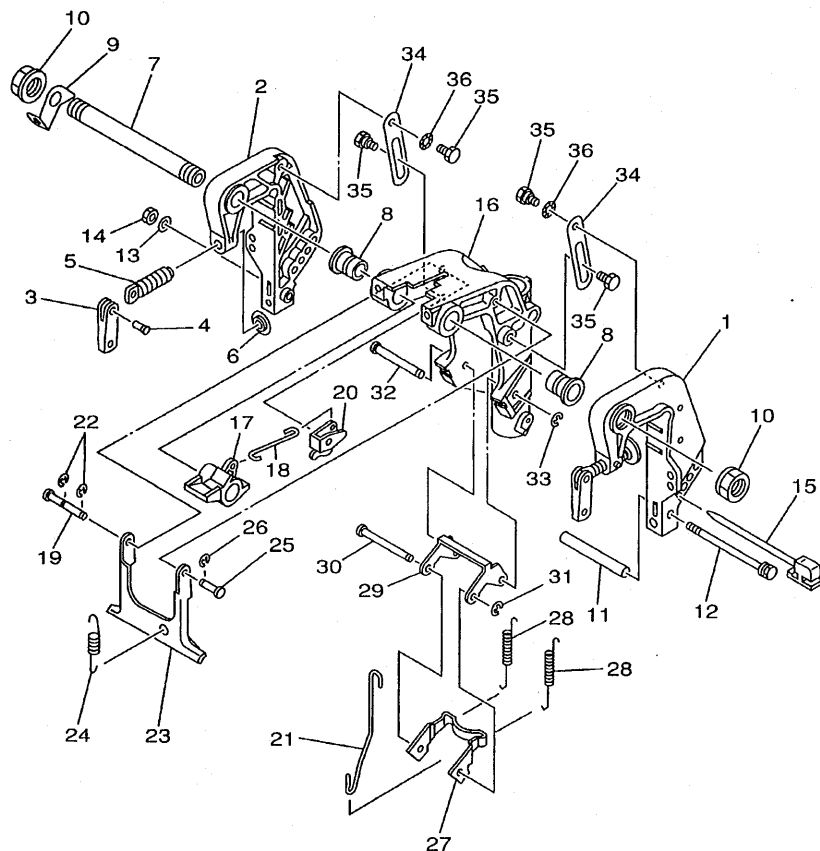


68R0010-1190

FIG. 20 REMOTE CONTROL ATTACHMENT

COMMANDE A DISTANCE

REF. NO.	PART NO. NO. PIECES	DESCRIPTION DESCRIPTION	F6MH	F8MH	SAV	F8W	REMARKS REMARQUES
1	68R-48501-00	REMOTE CONT. ATTACHMENT ASSY. COMMANDE A DISTANCE (KIT)	1	1	1		AP
2	68T-48531-00	.BRACKET, REMOTE CONTROL 1 .ETRIER 1, COMMANDE A DISTANCE	1	1	1		
3	682-48538-50	.CLAMP, CABLE 1 .COLLIER	2	2	2		
4	91690-30012	.PIN, SPRING .GOUPILLE, ELASTIQUE	2	2	2		
5	97095-06012	.BOLT .BOULON	2	2	2		
6	92995-06600	.WASHER .RONDELLE	2	2	2		
7	95380-06600	.NUT, HEXAGON .ECROU	2	2	2		
8	68T-44111-10	.HANDLE, GEAR SHIFT .POIGNEE, LEVIER D'EMBRAYAGE	1	1	1		
9	93210-12327	.O-RING .JOINT TORIQUE	1	1	1		
10	97095-05016	.BOLT .BOULON	1	1	1		
11	92995-05600	.WASHER .RONDELLE	1	1	1		
12	663-48344-00	.CABLE END, REMOTE CONTROL .CHAPE CABLE	1	1	1		
13	90468-18008	.CLIP .JONC	1	1	1		
14	663-48344-00	.CABLE END, REMOTE CONTROL .CHAPE CABLE	1	1	1		
15	90468-18008	.CLIP .JONC	1	1	1		
16	68T-42725-10	.GROMMET .PASSE-FIL	1	1	1		



68R0010-0200

FIG. 21 BRACKET 1

SUPPORT 1

REF. NO.	PART NO. NO. PIECES	DESCRIPTION DESCRIPTION	F8MH	F8MH	SAV	F8W	REMARKS REMARQUES
1	68T-43111-01-4D	BRACKET, CLAMP PRESSE	1	1	1	1	
2	68T-43112-01-4D	BRACKET, CLAMP PRESSE	1	1	1	1	
3	6E0-43118-01	HANDLE, TRANSOM CLAMP POIGNEE DE VIS DE PRESSE	2	2	2	2	
4	90243-04M01	PIN GOUPILLE	2	2	2	2	
5	677-43116-01	SCREW, TRANSOM CLAMP VIS DE PRESSE	2	2	2	2	
6	648-43114-01	PAD, TRANSOM CLAMP RONDELLE D'APPUI	2	2	2	2	
7	63V-43131-10	BOLT, CLAMP BRACKET BOULON, PRESSE	1	1	1	1	FOR RIDE GUIDE (L:283MM)
8	90386-22MA4	BUSH DOUILLE	2	2	2	2	
9	66R-43113-00	PLATE, CLAMP BRACKET PLAQUETTE, PRESSE	1	1	1	1	
10	63V-43145-00	CAP, CLAMP BRACKET CAPUCHON, PRESSE	2	2	2	2	
11	90387-06M13	COLLAR COLLERETTE	1	1	1	1	
12	90101-06M18	BOLT BOULON	1	1	1	1	
13	92990-06600	WASHER, PLATE RONDELLE, PLATE	1	1	1	1	
14	95380-06700	NUT ECROU	1	1	1	1	
15	6L2-43160-00	TILT ROD ASSY BROCHE D'INCLINAISON (ENS.)	1	1	1	1	
16	68T-43311-00-4D	BRACKET, SWIVEL 1 SUPPORT, PIVOT 1	1	1	1	1	S
	68T-43311-10-4D	BRACKET, SWIVEL 1 SUPPORT, PIVOT 1	1	1	1		L
17	68T-43631-00	LEVER, TILT LEVIER, INCLINAISON	1	1	1	1	
18	68T-43616-00	ROD, TILT LOCK TIGE	1	1	1	1	
19	68T-43646-00	SHAFT, LEVER AXE, LEVER	1	1	1	1	
20	68T-43641-00	LEVER, TILT LEVIER, INCLINAISON	1	1	1	1	
21	68T-43617-00	ROD, TILT LOCK TIGE	1	1	1	1	
22	99080-05600	CIRCLIP CIRCLIP	2	2	2	2	
23	68T-43350-00	RECEIVER ASSY RECEIVER ASSY	1	1	1	1	
24	90506-18M41	SPRING, TENSION RESSORT, TENSION	1	1	1	1	S
	90506-20005	SPRING, TENSION RESSORT, TENSION	1	1	1		L
25	63V-43191-00	SHAFT, STOPPER AXE, BUTEE	1	1	1	1	



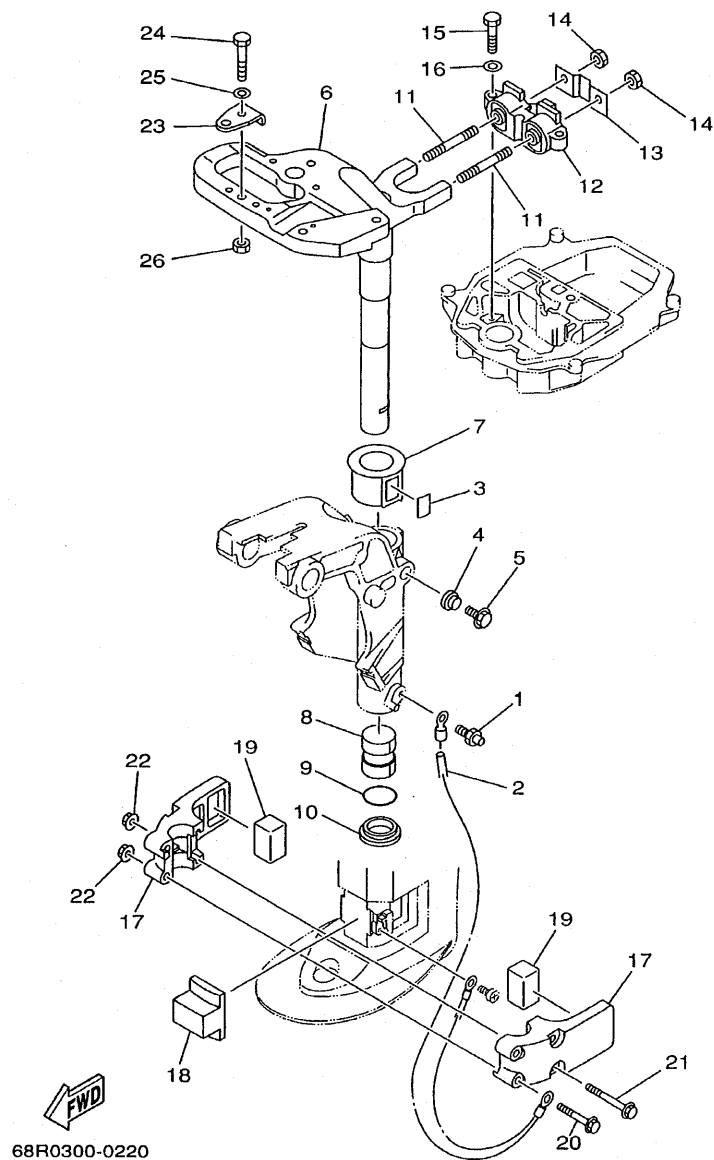


FIG. 22 BRACKET 2

SUPPORT 2

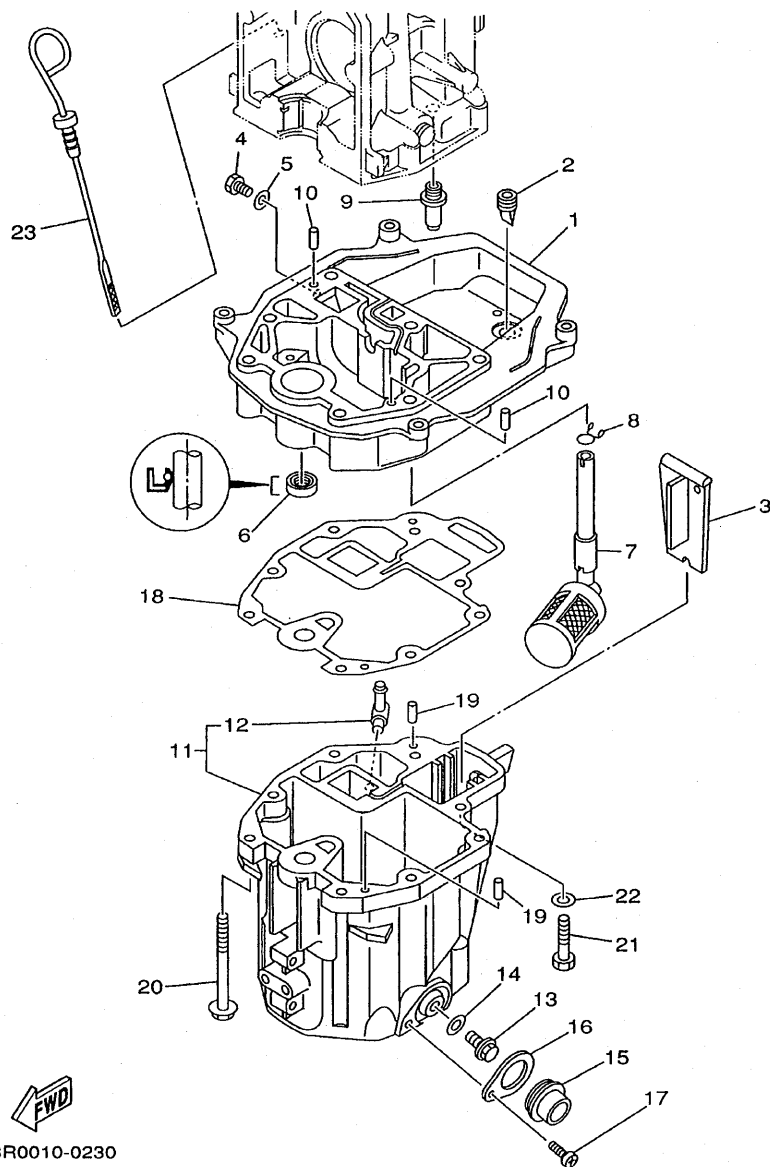
REF. NO.	PART NO. NO. PIECES	DESCRIPTION DESCRIPTION	FBMH	FBMH	SAV	F8W	REMARKS REMARQUES
1	93700-06M03	NIPPLE, GREASE GRAISSEUR	1	1	1	1	
2	68T-82127-00	WIRE, LEAD 2 FIL 2	1	1	1	1	
3	63V-42528-00	PLATE, FRICTION PLAQUE, FRICTION	1	1	1	1	
4	689-43373-01	SEAL, DAMPER JOINT	1	1	1	1	
5	90105-06M07	BOLT, WASHER BASED BOULON, AVEC RONDELLE	1	1	1	1	
6	68T-42511-01-4D	BRACKET, STEERING CADRE, DIRECTION	1	1	1	1	S
	68T-42511-11-4D	BRACKET, STEERING CADRE, DIRECTION	1	1	1		L
7	63V-42537-00	BUSHING, PIVOT SHAFT COUSSINET	1	1	1	1	
8	90386-30048	BUSH DOUILLE	1	1	1	1	
9	93210-29M94	O-RING JOINT TORIQUE	1	1	1	1	
10	90386-30M60	BUSH DOUILLE	1	1	1	1	
11	90116-08M54	BOLT, STUD GOUJON	2	2	2	2	
12	68T-44517-00-94	MOUNT RUBBER SILENT-BLOC	1	1	1		
	68T-44517-10-94	MOUNT RUBBER SILENT-BLOC				1	
13	68T-44526-00	PLATE PLAQUE	1	1	1	1	
14	95380-08600	NUT ECROU	2	2	2	2	
15	97075-06025	BOLT BOULON	2	2	2	2	
16	92995-06600	WASHER RONDELLE	2	2	2	2	
17	68T-44551-00-4D	HOUSING, LOWER MOUNT RUBBER BOITIER, SILENT-BLOC INFÉRIEUR	2	2	2	2	
18	68T-44557-00	MOUNT DAMPER, LOWER FRONT SILENT-BLOC, INFÉRIEUR AVANT	1	1	1	1	
19	682-44555-00	MOUNT DAMPER, LOWER SIDE SILENT-BLOC, INFÉRIEUR LATÉRAL	2	2	2	2	
20	90119-06012	BOLT, WITH WASHER BOULON, AVEC RONDELLE	2	2	2	2	
21	90119-06013	BOLT, WITH WASHER BOULON, AVEC RONDELLE	2	2	2	2	
22	90179-06M28	NUT ECROU	4	4	4	4	
23	63V-48511-01	HOOK, STEERING ATTACHE, DIRECTION				1	
24	97075-08035	BOLT BOULON				1	
25	92995-08600	WASHER RONDELLE				1	



F1

FOURREAU

[illegible]



68R0010-0230

FIG. 24 OIL PAN

VENTILATEUR D'HUILE

REF. NO.	PART NO. NO. PIECES	DESCRIPTION DESCRIPTION	F6MH	F8MH	SAV	F8W	REMARKS REMARQUES
1	68T-41137-00-94	GUIDE, EXHAUST COLLECTEUR D'ÉCHAPPEMENT	1	1	1	1	
2	65W-42717-00	RUBBER, SEAL 2 JOINT EN CAOUTCHOUC 2	1	1	1	1	
3	68T-45181-00	PLATE PLAQUETTE	1	1	1	1	
4	97095-08014	BOLT BOULON	1	1	1	1	
5	90430-08143	GASKET JOINT	1	1	1	1	
6	93101-12M70	OIL SEAL JOINT SPY	1	1	1	1	
7	68T-13421-01	STRAINER 2 FILTRE 2	1	1	1	1	
8	90467-11M08	CLIP JONC	1	1	1	1	
9	6G8-11575-00	RELIEF VALVE ASSY SOUPAPE DE RENTREE D'AIR	1	1	1	1	
10	93606-12019	PIN, DOWEL GOUJON	2	2	2	2	
11	68T-15311-00-5B	OIL PAN VENTILATEUR D'HUILE	1	1	1	1	
12	6H1-11372-00	.NIPPLE, HOSE .RACCORD, TUYAU	1	1	1	1	
13	90340-10M10	PLUG, STRAIGHT SCREW PLOT, FILETE DROIT	1	1	1	1	
14	90430-10M11	GASKET JOINT	1	1	1	1	
15	68T-15316-00	DAMPER, ENGINE MOUNT 1 AMORTISSEUR DE SUPPORT	1	1	1	1	
16	68T-15317-00	SPACER, ENGINE MOUNT ENTRETOISE DE SUPPORT	1	1	1	1	
17	97885-05008	SCREW, PAN HEAD VIS, TÊTE TRONCONIQUE	1	1	1	1	
18	68T-13475-00	GASKET JOINT	1	1	1	1	
19	93604-12M07	PIN, DOWEL GOUJON	2	2	2	2	
20	90119-08005	BOLT, WITH WASHER BOULON, AVEC RONDELLE	6	6	6	6	
21	97075-08030	BOLT BOULON	2	2	2	2	
22	92995-08600	WASHER RONDELLE	2	2	2	2	
23	68T-15362-00	PLUG, OIL LEVEL PLOT, NIVEAU D'HUILE	1	1	1	1	

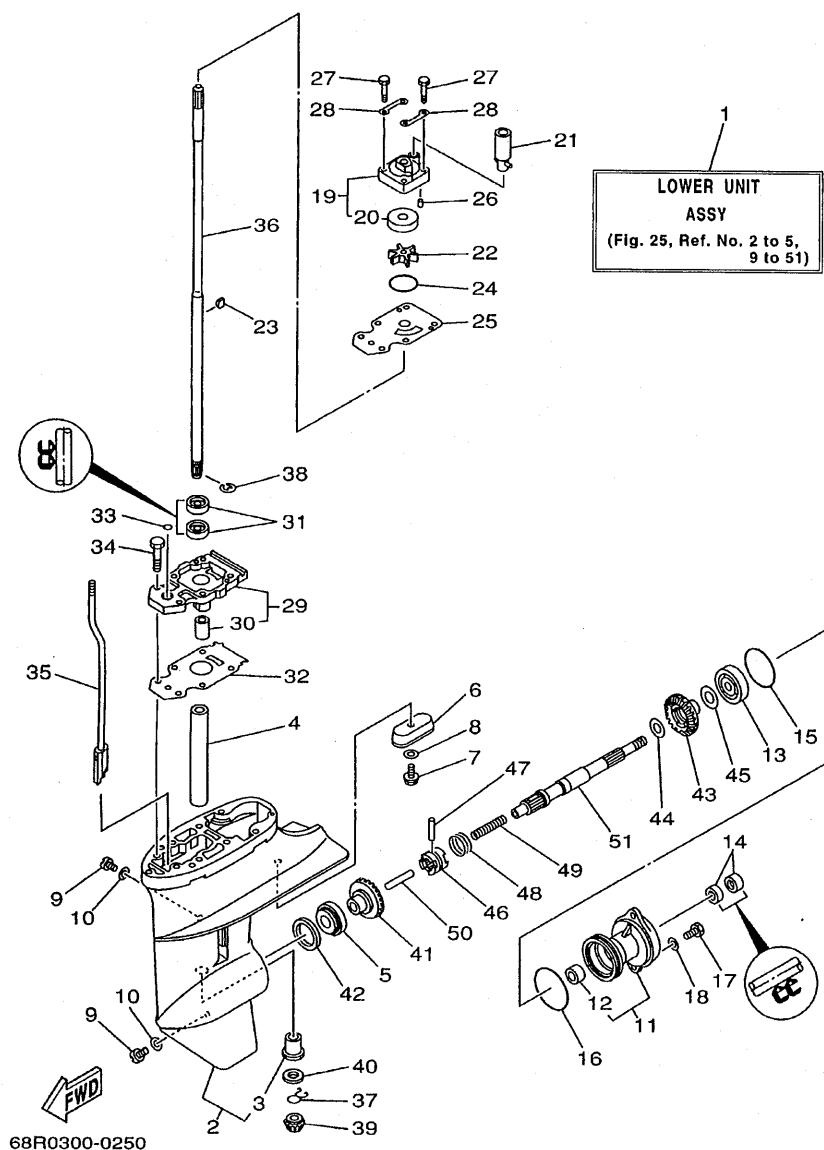


FIG. 25 LOWER CASING. DRIVE 1

REF. NO.	PART NO.	DESCRIPTION	F6MH	F8MH	SAV	F8W	REMARKS
1	68T-45300-00-4D	LOWER UNIT ASSY UNITE INFERIEURE (ENS.)	1	1	1	1	S
	68T-45300-10-4D	LOWER UNIT ASSY UNITE INFERIEURE (ENS.)	1	1	1		L
2	68T-45311-00-4D	CASING, LOWER BOITIER D'HELICE	1	1	1	1	
3	6G1-45317-09	.BUSHING, DRIVE SHAFT .DOUILLE, ARBRE MOTEUR	1	1	1	1	
4	90387-14M49	COLLAR COLLERETTE	1	1	1	1	
5	93306-004U0	BEARING ROULEMENT	1	1	1	1	
6	68T-45251-00	ANODE ANODE	1	1	1	1	
7	95895-06016	BOLT, FLANGE BOULON, A COLLERETTE	1	1	1	1	
8	92990-06300	WASHER, INTERNAL TOOTH RONDELLE, DENTURE INTERNE	1	1	1	1	
9	90340-08M04	PLUG, STRAIGHT SCREW PLOT, FILETE DROIT	2	2	2	2	
10	90430-08020	GASKET JOINT	2	2	2	2	
11	6G1-45361-01-4D	CAP, LOWER CASING COUVERCLE, BOITIER D'HELICE	1	1	1	1	
12	6G1-45362-09	.BUSHING .COUSSINET	1	1	1	1	
13	93306-004U0	BEARING ROULEMENT	1	1	1	1	
14	93101-15074	OIL SEAL JOINT SPY	2	2	2	2	
15	93210-49046	O-RING JOINT TORIQUE	1	1	1	1	
16	93210-53M08	O-RING JOINT TORIQUE	1	1	1	1	
17	97095-06016	BOLT BOULON	2	2	2	2	
18	92995-06600	WASHER RONDELLE	2	2	2	2	
19	63V-44301-00	WATER PUMP HOUSING COMP. CARTER, POMPE A EAU (ENS)	1	1	1	1	
20	63V-44322-00	.INSERT, CARTRIDGE .CUVETTE	1	1	1	1	
21	68T-44366-00	DAMPER, WATER SEAL JOINT, TUBE D'EAU	1	1	1	1	
22	68T-44352-00	IMPELLER TURBINE	1	1	1	1	
23	664-44338-00	KEY, WOODRUFF CLAVETTE, VOLANT	1	1	1	1	
24	93210-44398	O-RING JOINT TORIQUE	1	1	1	1	
25	68T-44323-00	OUTER PLATE, CARTRIDGE PLAQUE EXTERIEURE	1	1	1	1	
26	93604-12M07	PIN, DOWEL GOUJON	2	2	2	2	

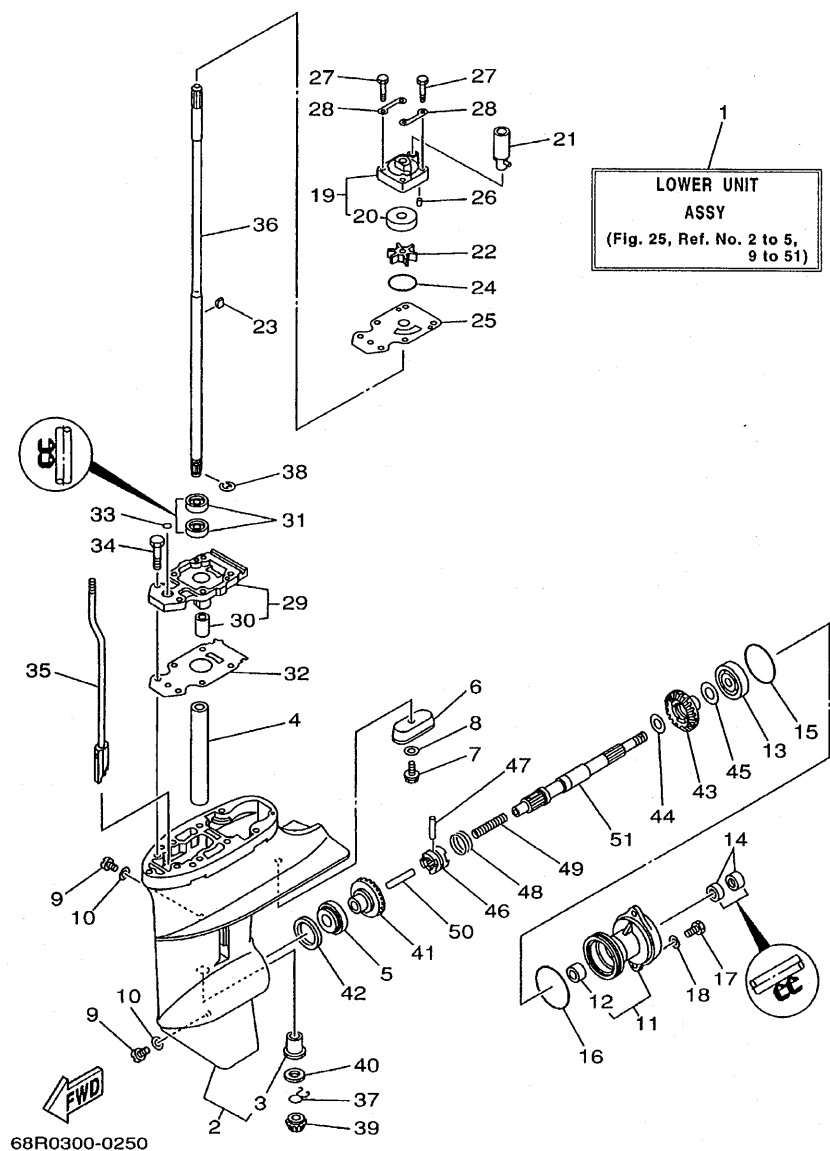


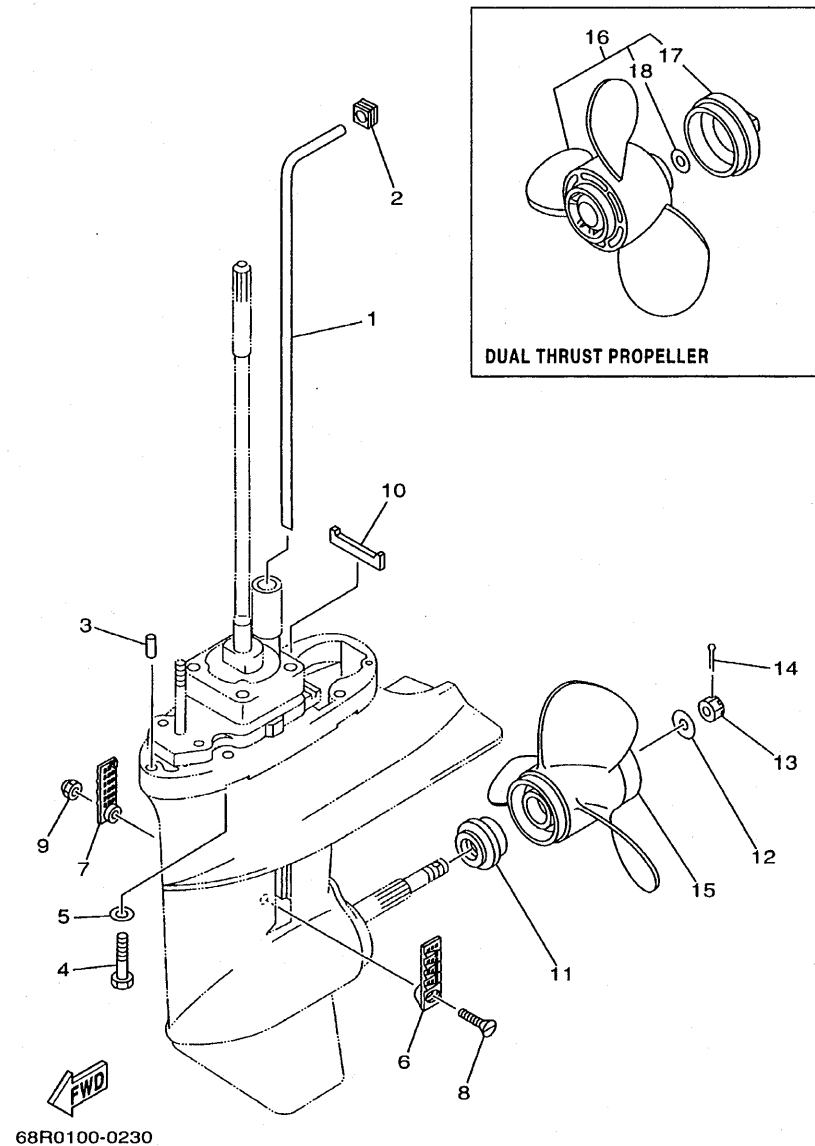
FIG. 25 LOWER CASING. DRIVE 1

BOITIER D'HELICE, TRANSMISSION 1

REF. NO.	PART NO. NO. PIECES	DESCRIPTION DESCRIPTION	F6MH	F8MH	SAV	F8W	REMARKS REMARQUES
27	97080-08045	BOLT BOULON	4	4	4	4	
28	63V-44328-00	PLATE PLAQUETTE	2	2	2	2	
29	68T-45331-00-5B	HOUSING, BEARING FLASQUE, ROULEMENT	1	1	1	1	
30	6G1-45316-09	BUSHING, DRIVE SHAFT DOUILLE, ARBRE MOTEUR	1	1	1	1	
31	93101-11M23	OIL SEAL JOINT SPY	2	2	2	2	
32	68T-45315-A0	PACKING, LOWER CASING JOINT, BOITIER D'HELICE	1	1	1	1	
33	93210-06ME6	O-RING JOINT TORIQUE	1	1	1	1	
34	97080-08025	BOLT BOULON	2	2	2	2	
35	68T-44150-00	SHIFT CAM ASSY CAME D'INVERSION	1	1	1	1	
36	68T-45511-00	SHAFT, DRIVE ARBRE, MOTEUR	1	1	1	1	S
	68T-45511-10	SHAFT, DRIVE ARBRE, MOTEUR	1	1	1		L
37	90467-09M05	CLIP JONC	1	1	1	1	
38	93430-07012	CIRCLIP CIRCLIP, TYPE S	1	1	1	1	
39	68T-45551-00	PINION PIGNON D'ATTAQUE	1	1	1	1	
40	6G1-45533-00-19	SHIM (T:1.9MM) CALE (T:1.9MM)	1	1	1	1	UR
	6G1-45533-00-20	SHIM (T:2.0MM) CALE (T:2.0MM)	1	1	1	1	UR
	6G1-45533-00-21	SHIM (T:2.1MM) CALE (T:2.1MM)	1	1	1	1	UR
	6G1-45533-00-22	SHIM (T:2.2MM) CALE (T:2.2MM)	1	1	1	1	UR
41	68T-45560-00	GEAR PIGNON	1	1	1	1	
42	664-45587-01-10	SHIM (T:0.10MM) CALE (T:0.10MM)	1	1	1	1	UR
	664-45587-01-12	SHIM (T:0.12MM) CALE (T:0.12MM)	1	1	1	1	UR
	664-45587-01-15	SHIM (T:0.15MM) CALE (T:0.15MM)	1	1	1	1	UR
	664-45587-01-18	SHIM (T:0.18MM) CALE (T:0.18MM)	1	1	1	1	UR
	664-45587-01-30	SHIM (T:0.30MM) CALE (T:0.30MM)	1	1	1	1	UR
	664-45587-01-40	SHIM (T:0.40MM) CALE (T:0.40MM)	1	1	1	1	UR
	664-45587-01-50	SHIM (T:0.50MM) CALE (T:0.50MM)	1	1	1	1	UR
43	68T-45571-00	GEAR PIGNON	1	1	1	1	

FIG. 26 LOWER CASING. DRIVE 2

BOITIER D'HELICE, TRANSMISSION 2



REF. NO.	PART NO. NO. PIECES	DESCRIPTION DESCRIPTION	FSMH	FSMT	SAV	FSW	REMARKS REMARQUES
1	68T-44361-00	TUBE, WATER TUBE D'EAU	1	1	1	1	S
	68T-44361-10	TUBE, WATER TUBE D'EAU	1	1	1		L
2	63V-44365-10	DAMPER, WATER SEAL JOINT, TUBE D'EAU	1	1	1	1	
3	93604-12M07	PIN, DOWEL GOUJON	2	2	2	2	
4	97075-08035	BOLT BOULON	4	4	4	4	
5	92995-08600	WASHER RONDELLE	4	4	4	4	
6	6G1-45214-00	COVER, WATER INLET GRILLE, ENTREE D'EAU	1	1	1	1	
7	6G1-45215-00	COVER, WATER INLET GRILLE, ENTREE D'EAU	1	1	1	1	
8	90152-05M03	SCREW, COUNTERSUNK VIS, TETE NOYEE	1	1	1	1	
9	90185-05002	NUT, SELF-LOCKING ECROU, AUTO-BLOCANT	1	1	1	1	
10	63V-45375-00	DAMPER, SEAL BOURRELET, CAOUTCHOUC	1	1	1	1	
11	6G1-45987-02	SPACER ENTRETOISE	1	1	1	1	
12	90201-10M01	WASHER, PLATE RONDELLE, PLATE	1	1	1	1	
13	90171-10M01	NUT, CASTLE ECROU, CRENELE	1	1	1	1	
14	91490-30020	PIN, COTTER GOUPILLE, FENDUE	1	1	1	1	
15	6G1-45941-00-EL	PROPELLER (3X8-1/2"X8-1/2"-N) HELICE (3X8-1/2"X8-1/2"-N)	1	1	1	1	UR
	6G1-45943-00-EL	PROPELLER (3X8-1/2"X7-1/2"-N) HELICE (3X8-1/2"X7-1/2"-N)	1	1	1	1	UR
	6G1-45947-00-EL	PROPELLER (3X8-1/2"X6-1/2"-N) HELICE (3X8-1/2"X6-1/2"-N)	1	1	1	1	UR
	6G1-45952-00-EL	PROPELLER (3X8-1/2"X8"-N) HELICE (3X8-1/2"X8"-N)	1	1	1	1	UR
16	6G1-W4591-01-EL	PROPELLER (3X9"X7"-N) HELICE (3X9"X7"-N)	1	1	1	1	UR DUAL THRUST PROP.
	6G1-W4592-00-EL	PROPELLER (3X9"X5"-N) HELICE (3X9"X5"-N)	1	1	1	1	UR DUAL THRUST PROP.
17	6G1-45616-01	.NUT, PROPELLER .CONE, HELICE	1	1	1	1	
18	90201-10M02	.WASHER, PLATE .RONDELLE, PLATE	1	1	1	1	

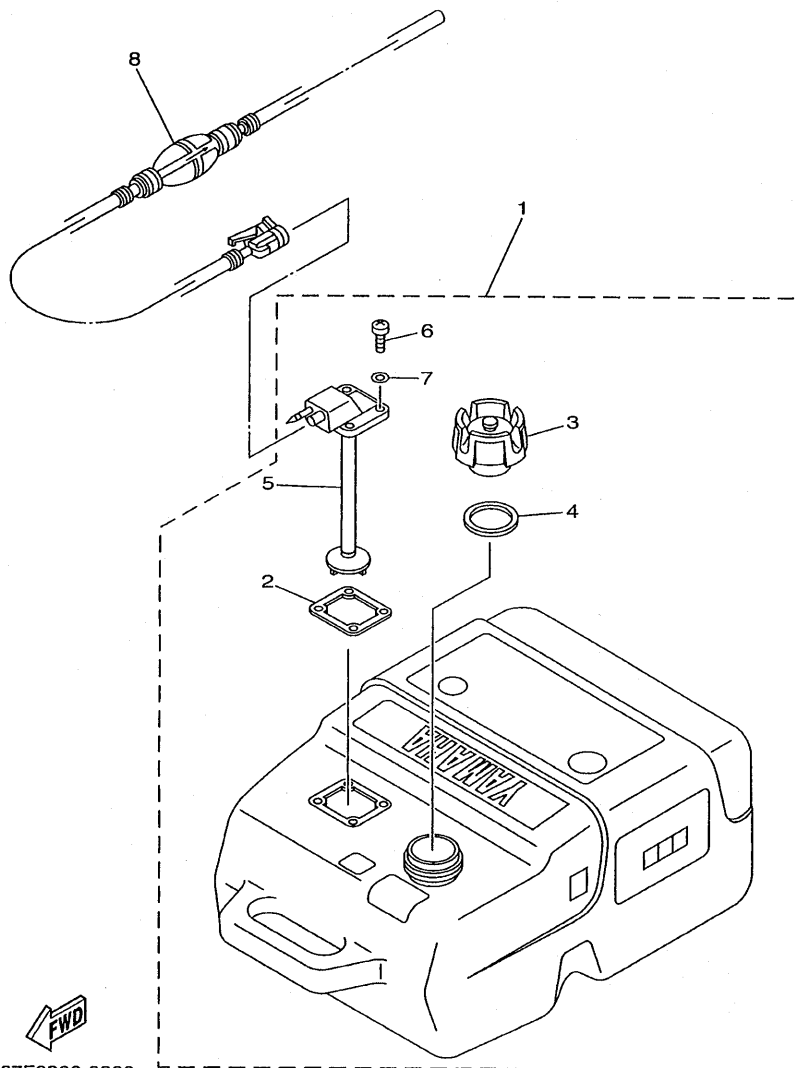


FIG. 28 FUEL TANK 2

RESERVOIR A CARBURANT 2

[illegible]

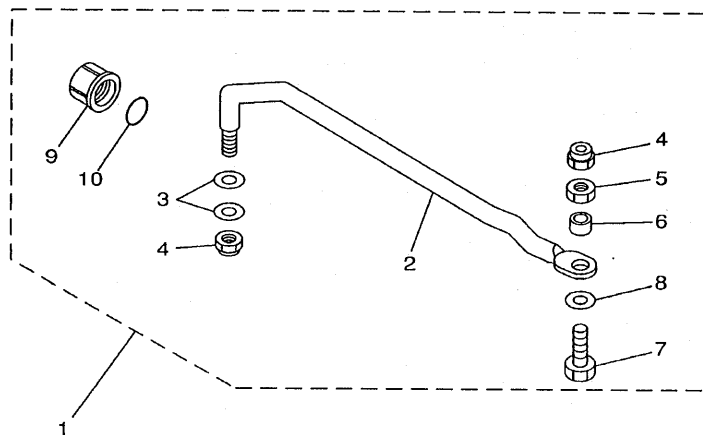
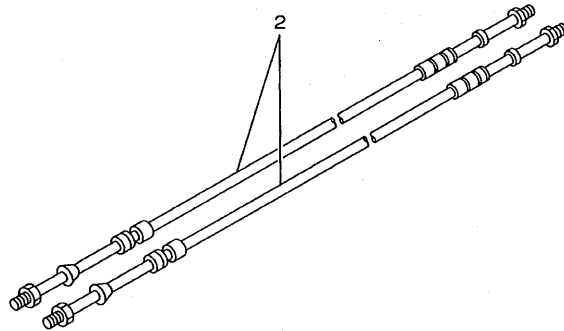


FIG. 29 STEERING GUIDE

FIXATION DE DIRECTION

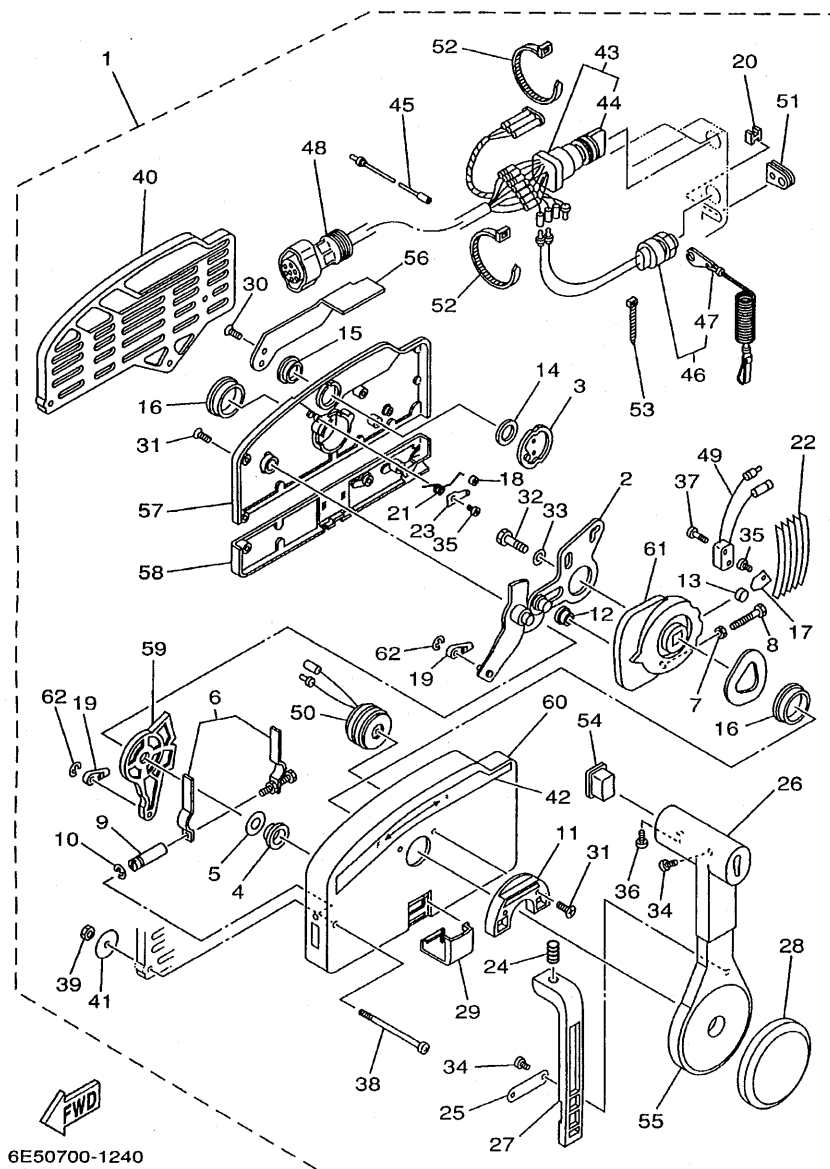
[illegible]

BOITIER DE COMMANDE A DISTANCE



67M0100-8280

[illegible]

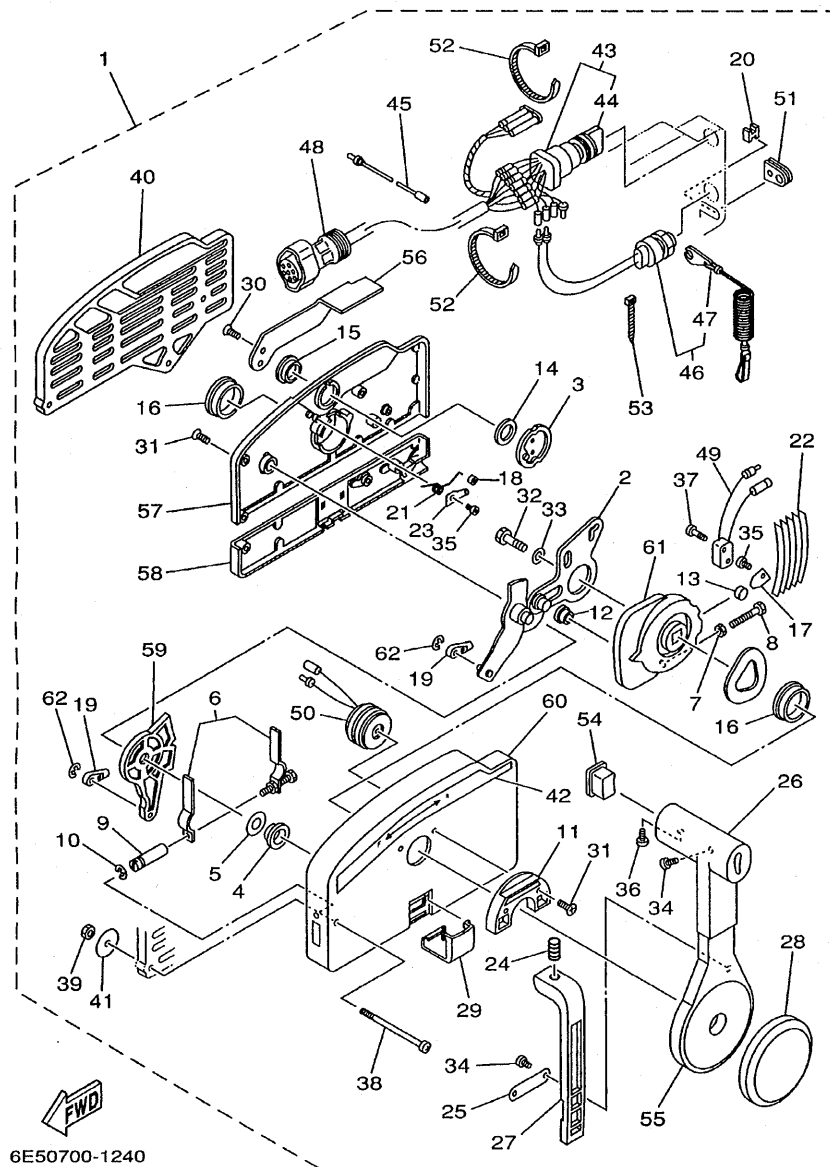


6E50700-1240

FIG. 31 REMOTE CONTROL ASSY

BOITIER DE COMMANDE A DISTANCE

REF. NO.	PART NO. NO. PIECES	DESCRIPTION DESCRIPTION	F8MH	F8MH	SAV	F8W	REMARKS REMARQUES
1	703-48201-15	REMOTE CONTROL ASSY (10P) BOITIER DE COMMANDE A DISTANCE				1	AP
2	703-48261-01	.ARM, THROTTLE .BRAS, ACCELERATION				1	
3	703-48153-00	.SHAFT, FREE ACCEL. .AXE				1	
4	703-48235-00	.BUSHING .COUSSINET				1	
5	703-48268-00	.SPACER .ENTRETOISE				1	
6	703-48264-00	.THROTTLE, FRICTION .ACCELERATION				1	
7	95380-05600	.NUT .ECROU				1	
8	97380-05025	.BOLT .BOULON				1	
9	703-48265-00	.SHAFT, FRICTION .AXE, COPILOTE				1	
10	93430-06024	.CIRCLIP .CIRCLIP, TYPE S				3	
11	703-48245-00	.PLATE, LOCK .PLAQUE, VERROU				1	
12	703-48252-00	.ROLLER, CAM .POULIE				1	
13	701-48248-00	.ROLLER, FREE ACCEL. .POULIE				1	
14	703-48198-00	.WASHER, WAVE .RONDELLE, ELASTIQUE ONDULEE				1	
15	703-48243-00	.BUSHING .COUSSINET				1	
16	703-48236-00	.BUSHING 1 .POULIE				2	
17	703-48189-00	.RETAINER .FLASQUE				1	
18	703-48234-00	.ROLLER, DETENT .POULIE				1	
19	703-48345-01	.CABLE END, REMOTE CONTROL 2 .CHAPE CABLE				2	
20	703-48358-00	.ANCHOR, CABLE .COLLIER				1	
21	703-48244-00	.SPRING, FREE ACCEL. .RESSORT				1	
22	703-48238-00	.SPRING, DETENT .RESSORT				5	
23	703-48246-00	.SPACER .ENTRETOISE				1	
24	703-48227-00	.SPRING, NEUTRAL LOCK .RESSORT				1	
25	703-48226-00	.PLATE, STOPPER .PLAQUETTE				1	
26	703-48222-00	.GRIP, CONTROL LEVER .POIGNEE, COMMANDE LEVIER				1	SINGLE
27	703-48223-00	.LOCK, NEUTRAL .VERROU, NEUTRAL				1	

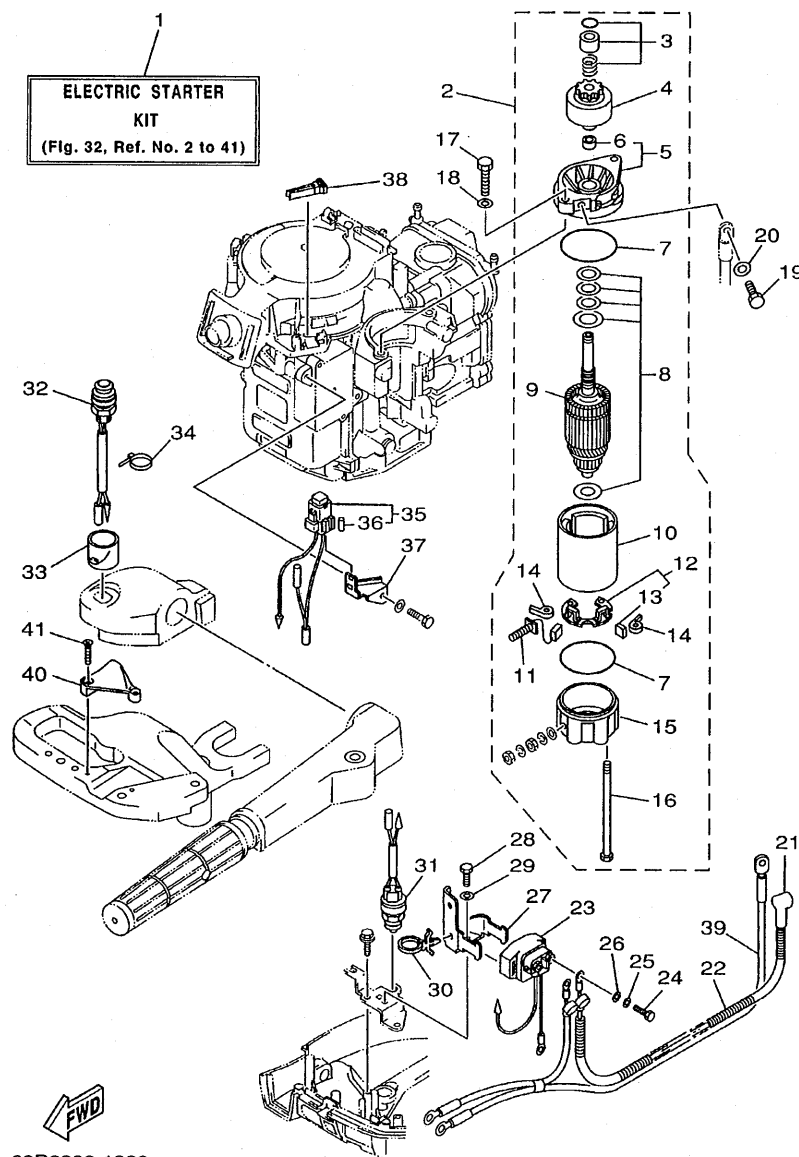


6E50700-1240

FIG. 31 REMOTE CONTROL ASSY

BOITIER DE COMMANDE A DISTANCE

REF. NO.	PART NO. NO. PIECES	DESCRIPTION DESCRIPTION	F6MH	F8MH	SAV	F8W	REMARKS REMARQUES
28	703-48225-00	.COVER .COUVERCLE				1	
29	703-48219-00	.COVER, LEAD .COUVERCLE				1	
30	703-48281-00	.SCREW .VIS				2	
31	703-48282-00	.SCREW .VIS				7	
32	97095-08030	.BOLT .BOULON				1	
33	92990-08600	.WASHER, PLATE .RONDELLE, PLATE				1	
34	98580-04010	.SCREW, PAN HEAD .VIS, TETE TRONCONIQUE				3	
35	98580-04006	.SCREW, PAN HEAD .VIS, TETE TRONCONIQUE				2	
36	98580-05010	.SCREW, PAN HEAD .VIS, TETE TRONCONIQUE				1	
37	98580-03015	.SCREW, PAN HEAD .VIS, TETE TRONCONIQUE				2	
38	703-48291-10	.SCREW (M6) .VIS (M6)				3	
39	95380-06600	.NUT, HEXAGON .ECROU				3	
40	703-48293-10	.SPACER, REMOTE CONTROL .ENTRETOISE				1	SINGLE
41	701-48287-00	.WASHER .RONDELLE				3	
42	703-48215-00	.GRAPHIC .ADHESIF				1	
43	703-82510-42	.MAIN SWITCH ASSY .CONTACTEUR A CLEF COMPLET				1	
44	676-82577-00	.CAP, KEY .CABOCHON				1	
45	703-82531-00	.WIRE, LEAD .FIL				1	
46	688-82575-01	.ENGINE STOP SWITCH ASSY .COUPE CIRCUIT CPLT				1	
47	682-82556-00	.STOPPER .PLAQUETTE				1	
48	688-8258A-20	.EXTENSION, WIRE HARNESS .EXTENSION, FAISCEAU				1	L:5M (10P)
49	703-82540-00	.NEUTRAL SWITCH ASSY .CONTACTEUR DE POINT-MORT				1	
50	703-83383-02	.BUZZER .RONFLEUR				1	
51	703-48284-00	.GROMMET .PASSE-FIL				1	
52	703-82591-00	.BAND .COLLIER				2	
53	703-82592-00	.BAND .COLLIER				1	
54	703-48224-00	.COVER, CONTROL LEVER .COUVERCLE				1	WITHOUT PT/T SW.



68R0300-1320

FIG. 32 OPTIONAL PARTS

PIECES OPTIONNELLES

REF. NO.	PART NO. NO. PIECES	DESCRIPTION DESCRIPTION	FBMH	FBMH	SAV	F8W	REMARKS REMARQUES
1	68R-W8180-00	ELECTRIC STARTER KIT KIT DEMARREUR ELECTRIQUE		1	1		AP
2	68T-81800-00	STARTING MOTOR ASSY DEMARREUR ELECTRIQUE COMPLET		1	1		
3	68T-81857-00	.RETAINER .ARRETOIR		1	1		
4	689-81807-12	.GEAR ASSY, STARTING MOTOR .PIGNON, DEMARREUR ELECTRIQUE		1	1		
5	6F5-81830-11	.FRONT BRACKET ASSY .SUPPORT AVANT		1	1		
6	689-81831-00	.METAL, FRONT .METAL, AVANT		1	1		
7	689-81847-11	.O-RING .JOINT TORIQUE		2	2		
8	689-81809-11	.WASHER KIT .JEU DE RONDELLES		1	1		
9	689-81850-12	.ARMATURE ASSY .INDUIT		1	1		
10	689-81810-11	.STATOR ASSY .STATOR COMPLET		1	1		
11	689-81811-11	.BRUSH 1 .CHARBON 1		1	1		
12	689-81840-11	.BRUSH HOLDER ASSY .SUPPORT DE CHARBON		1	1		
13	689-81812-11	.BRUSH 2 .CHARBON 2		1	1		
14	689-81813-10	.SPRING, BRUSH .RESSORT, DE CHARBON		2	2		
15	689-81820-11	.REAR BRACKET ASSY .SUPPORT ARRIERE COMPLET		1	1		
16	689-81826-10	.BOLT .BOULON		2	2		
17	97013-08025	BOLT BOULON		2	2		
18	92903-08600	WASHER, PLATE RONDELLE, PLATE		2	2		
19	97095-08016	BOLT BOULON		1	1		
20	92995-08600	WASHER RONDELLE		1	1		
21	6G8-82117-00	WIRE, LEAD FIL		1	1		
22	90446-10M86	HOSE DURITE		1	1		
23	68T-81940-00	STARTER RELAY ASSY LANCEUR RELAIS (ENS.)		1	1		
24	97095-06010	BOLT BOULON		2	2		
25	92995-06100	WASHER, SPRING RONDELLE, GROWER		2	2		
26	92995-06600	WASHER RONDELLE		2	2		
27	68T-81945-00	PLATE, SWITCH FITTING PLAQUE, FIXATION DU RELAIS		1	1		

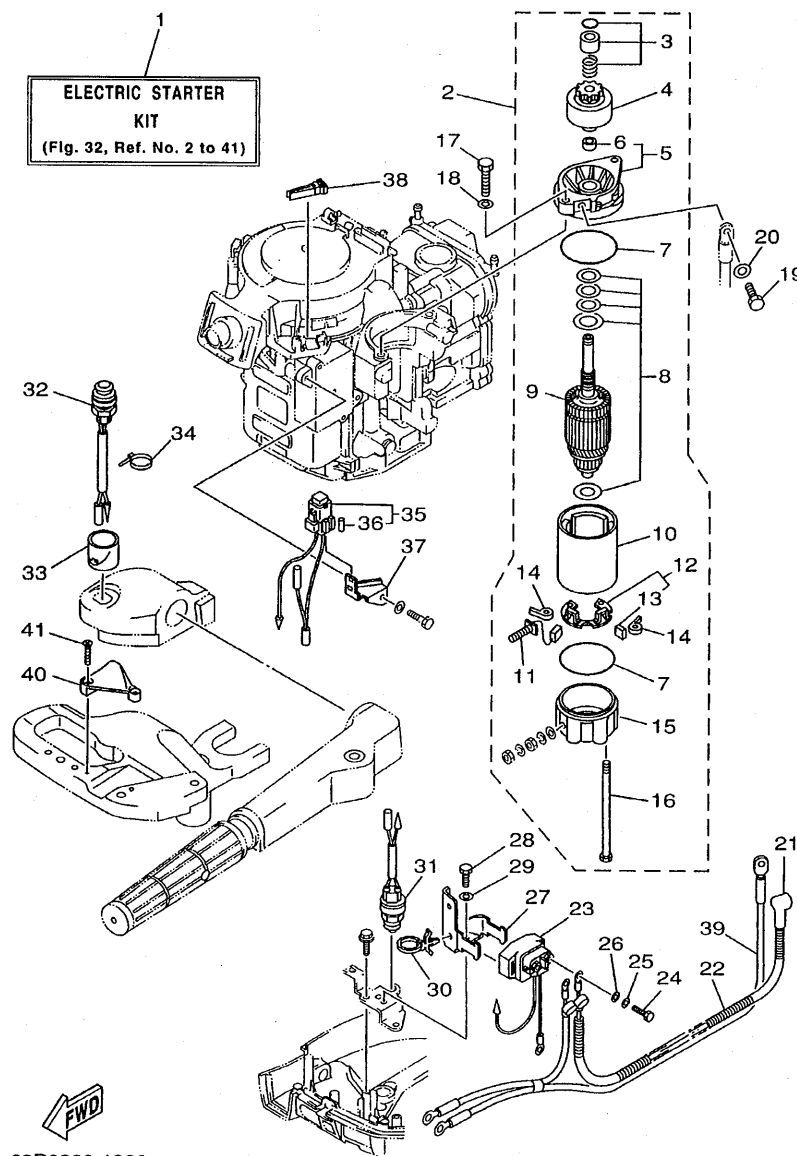
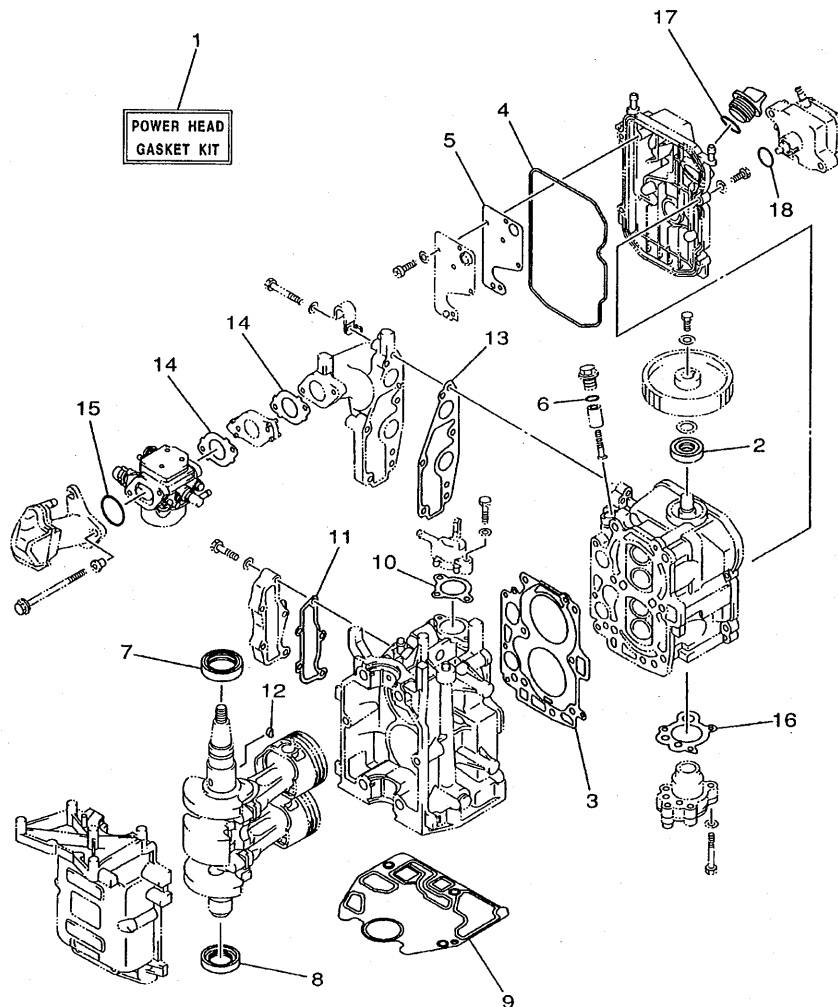


FIG. 32 **OPTIONAL PARTS**

PIECES OPTIONNELLES

[illegible]



68R0100-0250

FIG. 33 REPAIR KIT 1

KITS DE REPARATION 1

REF. NO.	PART NO. NO. PIECES	DESCRIPTION DESCRIPTION	F8MH	F8MH	SAV	F8W	REMARKS REMARQUES
1	68T-W0001-00	POWER HEAD GASKET KIT POCHETTE DE JINTS TETE MOTRICE	1	1	1	1	
2	93102-18M21	.OIL SEAL .JOINT SPY	1	1	1	1	
3	68T-11181-00	.GASKET, CYLINDER HEAD 1 .JOINT, DE CULASSE 1	1	1	1	1	
4	68T-11356-00	.SEAL, CYLINDER 2 .JOINT, SPY CYLINDRE	1	1	1	1	
5	68T-11169-A0	.GASKET, BREATHER COVER .JOINT, COUVERCLE DE RENIFLARD	1	1	1	1	
6	93210-13M63	.O-RING .JOINT TORIQUE	1	1	1	1	
7	93102-30M22	.OIL SEAL .JOINT SPY	1	1	1	1	
8	93101-25M69	.OIL SEAL .JOINT SPY	1	1	1	1	
9	68T-11351-00	.GASKET, CYLINDER .JOINT, D'EMBASE	1	1	1	1	
10	6G8-12414-A0	.GASKET, COVER .JOINT, COUVERCLE	1	1	1	1	
11	68T-41114-A0	.GASKET, EXHAUST OUTER COVER .JOINT, COUVERCLE D'ECHAPPEMEN	1	1	1	1	
12	90280-03M01	.KEY, WOODRUFF .CLAVETTE, DEMI-LUNE	1	1	1	1	
13	68T-13645-00	.GASKET, MANIFOLD 1 .JOINT, TUBULURE 1	1	1	1	1	
14	68T-13646-A0	.GASKET, MANIFOLD 2 .JOINT, TUBULURE 2	2	2	2	2	
15	93210-31MJ5	.O-RING .JOINT TORIQUE	1	1	1	1	
16	68T-13329-00	.GASKET, PUMP COVER .JOINT, COUVERCLE DE POMPE	1	1	1	1	
17	93210-24M79	.O-RING .JOINT TORIQUE	1	1	1	1	
18	93210-20M65	.O-RING .JOINT TORIQUE	1	1	1	1	



68R0100-0260

FIG. 34 REPAIR KIT 2

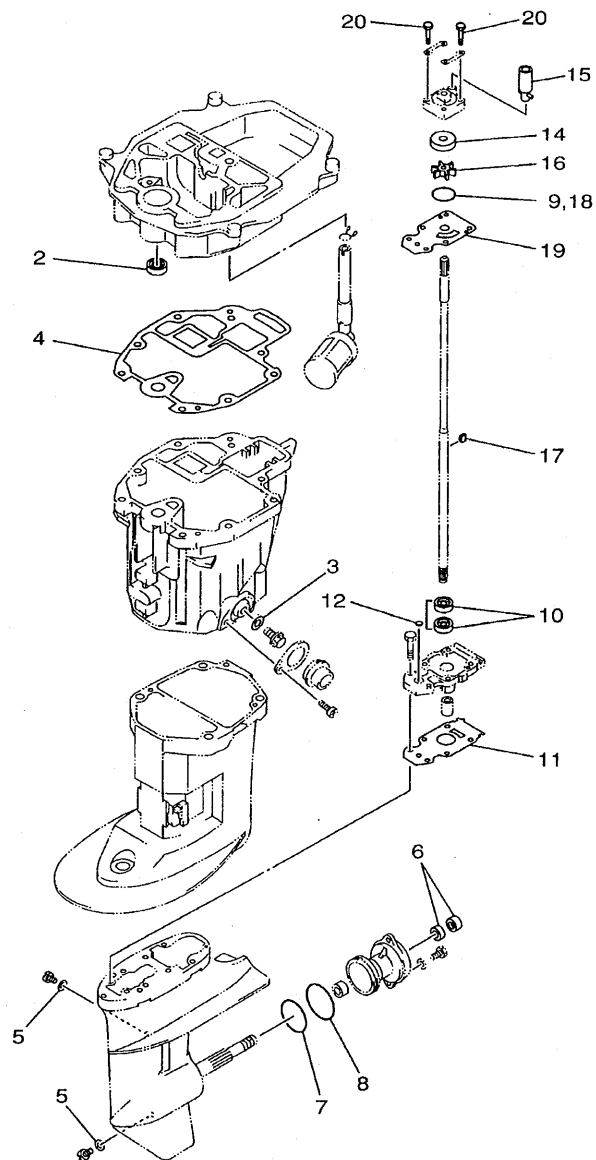
KITS DE REPARATION 2

[illegible]

FIG. 35 REPAIR KIT 3

KITS DE PEPAARATION 3

REF. NO.	PART NO. NO. PIECES	DESCRIPTION DESCRIPTION	FSMH	FSMH	SAV	F8W	REMARKS REMARQUES
1	68T-W0001-20	LOWER UNIT GASKET KIT POCHETTE DE JOINTS EMBASE	1	1	1	1	
2	93101-12M70	.OIL SEAL .JOINT SPY	1	1	1	1	
3	90430-10M11	.GASKET .JOINT	1	1	1	1	
4	68T-13475-00	.GASKET .JOINT	1	1	1	1	
5	90430-08020	.GASKET .JOINT	2	2	2	2	
6	93101-15074	.OIL SEAL .JOINT SPY	2	2	2	2	
7	93210-49046	.O-RING .JOINT TORIQUE	1	1	1	1	
8	93210-53M08	.O-RING .JOINT TORIQUE	1	1	1	1	
9	93210-44398	.O-RING .JOINT TORIQUE	1	1	1	1	
10	93101-11M23	.OIL SEAL .JOINT SPY	2	2	2	2	
11	68T-45315-A0	.PACKING, LOWER CASING .JOINT, BOITIER D'HELICE	1	1	1	1	
12	93210-06ME6	.O-RING .JOINT TORIQUE	1	1	1	1	
13	68T-W0078-00	WATER PUMP REPAIR KIT KIT DE REPARATION DE LA POMPE	1	1	1	1	
14	63V-44322-00	.INSERT, CARTRIDGE .CUVETTE	1	1	1	1	
15	68T-44366-00	.DAMPER, WATER SEAL .JOINT, TUBE D'EAU	1	1	1	1	
16	68T-44352-00	.IMPELLER .TURBINE	1	1	1	1	
17	664-44338-00	.KEY, WOODRUFF .CLAVETTE, VOLANT	1	1	1	1	
18	93210-44398	.O-RING .JOINT TORIQUE	1	1	1	1	
19	68T-44323-00	.OUTER PLATE, CARTRIDGE .PLAQUE EXTERIEURE	1	1	1	1	
20	97080-08045	.BOLT .BOULON	4	4	4	4	



68R0100-0270

B7

NUMERICAL INDEX
INDEX NUMERIQUE

PART NO. NO. PIECES	REF. NO.	PART NO. NO. PIECES	REF. NO.	PART NO. NO. PIECES	REF. NO.	PART NO. NO. PIECES	REF. NO.	PART NO. NO. PIECES	REF. NO.	PART NO. NO. PIECES	REF. NO.
68T-W0001-00	33 - 1	7NJ-12118-00	5 - 6	68T-14497-00	18 - 21	6YK-24201-10	28 - 1	689-41273-00	6 - 19	68T-42771-00	16 - 27
68T-W0001-20	35 - 1	51Y-12119-00	5 - 7		19 - 29	6YL-24201-01	27 - 1	68R-41283-00	18 - 18	68T-42801-00	16 - 6
68T-W0070-50	1 - 12	67D-12121-00	5 - 2	67D-14527-00	7 - 18	68T-24251-00	9 - 7	68T-41283-00	18 - 18	68T-43111-01-4D	21 - 1
68T-W0078-00	35 - 13	68T-12146-00	5 - 8	67D-14536-00	7 - 17	6YK-24260-01	28 - 5		19 - 26	68T-43112-01-4D	21 - 2
68T-W0084-00-4D	17 - 1	68T-12151-00	5 - 12		34 - 8	6YL-24260-01	27 - 4	68T-41638-00	18 - 17	66R-43113-00	21 - 9
68T-W009A-00-4D	4 - 1	6G8-12158-00	5 - 14	68T-14546-00	7 - 8	6YL-24268-01	27 - 7		19 - 25	648-43114-01	21 - 6
68T-W009B-00-4D	2 - 1	6G8-12159-00	5 - 13		34 - 4		28 - 2	6G1-41662-01-94	18 - 6	677-43116-01	21 - 5
68T-W0093-00	34 - 1	68T-12171-00	8 - 2	68T-14711-00-5B	23 - 2	6G1-24304-02	9 - 1		19 - 11	6E0-43118-01	21 - 3
6G1-W4591-01-EL	26 - 16	66M-12411-00	2 - 6	68T-1492A-00	7 - 11	6YL-24306-52	27 - 8	63V-42111-00-4D	17 - 2	63V-43131-10	21 - 7
6G1-W4592-00-EL	26 - 16	68T-12413-00-9M	2 - 7	68T-1492E-37	7 - 9		28 - 8	67D-42119-00	17 - 10	6E5-43145-01	29 - 9
68R-W8180-00	32 - 1	6G8-12414-A0	2 - 8	68T-1492F-1K	7 - 10	6YL-24329-00	27 - 6	68T-42121-00-4D	17 - 25	63V-43145-00	21 - 10
68T-11111-00-94	4 - 2		33 - 10	6J8-14959-00	7 - 14		28 - 7	6G1-42125-01	17 - 7	6L2-43160-00	21 - 15
67D-11133-10	4 - 3	68T-12481-00	2 - 11		34 - 6	61N-24329-00	9 - 2	6G1-42126-00	17 - 6	63V-43191-00	21 - 25
68T-11168-00	4 - 15	68T-12482-00	2 - 18	67D-14966-00	7 - 6	66M-24374-00	9 - 19	68T-42131-00	17 - 22	68T-43311-00-4D	21 - 16
68T-11169-A0	4 - 16	68T-12483-00	6 - 16	68T-14981-00	7 - 13	6E9-24378-00	2 - 14	68R-42137-00	17 - 11	68T-43311-10-4D	21 - 16
	33 - 5	66M-13131-00	9 - 18	67D-14984-00	7 - 12	650-24378-00	4 - 11	68T-42137-00	17 - 11	68T-43350-00	21 - 23
68T-11181-00	4 - 4	68T-13300-00	8 - 15		34 - 5		6 - 2	69F-42137-00	17 - 11	689-43373-01	22 - 4
	33 - 3	68T-13329-00	8 - 16	66T-14991-00	7 - 15	68T-24410-00	9 - 12	6G1-42138-01	17 - 3	68T-43611-00	21 - 30
68T-11191-00-94	4 - 10		33 - 16	68T-15100-00-94	2 - 2	66M-24411-00	9 - 16	6E0-42159-02	17 - 4	68T-43614-00	21 - 27
6G8-11197-01	4 - 21	68T-13421-01	24 - 7	68T-15311-00-5B	24 - 11	66M-24413-01	9 - 13	67D-42177-00	17 - 9	68T-43615-00	21 - 29
68T-11325-00	4 - 19	68T-13475-00	24 - 18	68T-15316-00	24 - 15	6A0-24421-01	9 - 14	68T-42511-01-4D	22 - 6	68T-43616-00	21 - 18
68T-11351-00	2 - 5		35 - 4	68T-15317-00	24 - 16	66M-24423-00	9 - 17	68T-42511-11-4D	22 - 6	68T-43617-00	21 - 21
	33 - 9	68T-13641-00-1S	6 - 1	68T-15362-00	24 - 23	66M-24444-00	9 - 22	63V-42528-00	22 - 3	68T-43627-00	21 - 34
68T-11356-00	4 - 12	68T-13641-10-1S	6 - 1	6G8-15363-00	4 - 23	66M-24454-00	9 - 20	63V-42537-00	22 - 7	68T-43631-00	21 - 17
	33 - 4	68T-13645-00	6 - 3	63V-15705-01	10 - 9	66M-24471-00	9 - 21	68R-42610-50-4D	1 - 1	68T-43641-00	21 - 20
6H1-11372-00	24 - 12		33 - 13	68T-15710-01	10 - 1	6YK-24610-10	28 - 3	68T-42610-50-4D	1 - 1	68T-43646-00	21 - 19
68T-11411-00	3 - 3	68T-13646-A0	6 - 10	68T-15711-01	10 - 2	6YL-24610-00	27 - 2	68T-42613-00	1 - 2	68T-43659-00	21 - 32
68T-11416-00	3 - 4		33 - 14	63V-15713-00	10 - 7	6YL-24641-00	27 - 3	68T-42615-00	1 - 6	68T-44111-00	18 - 1
68T-11416-10	3 - 4	68T-14126-00	7 - 19	63V-15714-00	10 - 5		28 - 4	68T-42649-00	1 - 10	68T-44111-10	19 - 22
68T-11416-20	3 - 4	68T-14271-00	6 - 11	68T-15716-00	10 - 8	68T-26301-01	17 - 17	6G1-42651-02	1 - 4		20 - 8
68T-11536-00	8 - 8	68R-14301-00	7 - 1	66T-15731-00	10 - 22	68T-26367-00	16 - 15	68T-42652-00	1 - 7	66R-44114-00	18 - 11
66M-11537-00-94	8 - 3	68R-14301-20	7 - 1	66T-15734-00	10 - 20	68T-26393-00	16 - 14	68R-42678-10	1 - 11		19 - 16
68T-11557-00	8 - 9	68T-14301-00	7 - 1	63V-15741-00	10 - 6	68T-28100-00	9 - 33	68T-42678-10	1 - 11	65W-44116-00	18 - 10
6G8-11575-00	24 - 9	68T-14301-20	7 - 1	63V-15744-00	10 - 12	67F-2812A-00	13 - 17	68T-42710-00-4D	16 - 1		19 - 15
6G8-11587-01	8 - 10	68T-14301-30	7 - 1	6G1-15755-00	10 - 15		32 - 38	68T-42716-00	16 - 5	68T-44121-01	18 - 5
68T-11603-00	3 - 8	69F-14301-20	7 - 1	68T-15762-00	10 - 25	68T-41113-00-9M	2 - 13	65W-42717-00	16 - 20		19 - 10
68T-11604-00	3 - 8	6E5-14321-00	7 - 2	67D-15764-00	10 - 3	68T-41114-A0	2 - 15		24 - 2	68T-44143-00	18 - 13
68T-11605-00	3 - 8	67D-14323-00	7 - 16	68T-15764-00	10 - 14		33 - 11	68T-42717-00	16 - 26		19 - 18
68T-11631-00-96	3 - 7	68T-14323-20	7 - 16	63V-15767-01	10 - 10	68T-41137-00-94	24 - 1	68T-42724-00	16 - 16	68T-44143-10	18 - 13
68T-11633-00	3 - 9	6E7-14325-00	9 - 15	68T-15770-00	10 - 21	68T-41211-00	18 - 20	68T-42724-40	13 - 3	68T-44150-00	25 - 35
68T-11635-00	3 - 7	6J8-14334-00	7 - 3	68T-15774-00	10 - 26		19 - 28	6G1-42725-00	14 - 4	63V-44301-00	25 - 19
68T-11636-00	3 - 7	68T-14385-00	7 - 5	68T-15774-10	10 - 26	69F-41211-00	18 - 20	68T-42725-00	16 - 13	63V-44322-00	25 - 20
68T-11650-00	3 - 5		34 - 2	6G1-15779-00	10 - 17	68T-41237-00	13 - 23	68T-42725-10	16 - 13		35 - 14
67D-11654-00	3 - 6	67D-14386-00	7 - 7	68T-15784-00	10 - 11	68T-41256-00	6 - 20		20 - 16	68T-44323-00	25 - 25
67D-12111-00	5 - 1		34 - 3	6A0-15789-00	10 - 18	6J8-41262-00	6 - 21	6H4-42726-00	16 - 19		35 - 19
68T-12113-00	5 - 4	647-14395-60	18 - 28	68T-15793-00	10 - 13	661-41262-02	18 - 27	682-42727-00	16 - 10	63V-44328-00	25 - 28
68T-12116-00	5 - 3		19 - 36	66T-15794-00	10 - 19		19 - 35	68T-42738-00-4D	16 - 11	664-44338-00	25 - 23
7NJ-12117-00	5 - 5	68T-14440-00	6 - 12	68T-15795-00	10 - 4	6H4-41271-01	6 - 18	68T-42741-00	16 - 21		35 - 17

NUMERICAL INDEX
INDEX NUMERIQUE

PART NO. NO. PIECES	REF. NO.	PART NO. NO. PIECES	REF. NO.	PART NO. NO. PIECES	REF. NO.	PART NO. NO. PIECES	REF. NO.	PART NO. NO. PIECES	REF. NO.	PART NO. NO. PIECES	REF. NO.
68T-44352-00	25 - 22	664-45587-01-50	25 - 42	703-48281-00	31 - 30	689-81831-00	32 - 6	65W-84342-00	16 - 29	90170-24M09	8 - 11
	35 - 16	68T-45611-00	25 - 51	703-48282-00	31 - 31	689-81840-11	15 - 16	68F-85119-00	16 - 2	90171-10M01	26 - 13
68T-44361-00	26 - 1	6G1-45616-01	26 - 17	703-48284-00	31 - 51		32 - 12	68T-85410-00	12 - 22	90179-06M28	22 - 22
68T-44361-10	26 - 1	68T-45631-00	25 - 46	701-48287-00	31 - 41	689-81847-11	15 - 11	68T-85520-00	11 - 2	90179-10004	17 - 27
63V-44365-10	26 - 2	6G1-45632-00	25 - 47	703-48291-10	31 - 38		32 - 7	68T-85533-00	11 - 4	90185-05002	26 - 9
68T-44366-00	25 - 21	654-45633-00	25 - 48	703-48293-10	31 - 40	689-81850-12	15 - 13	68T-85533-10	11 - 4	90185-08057	22 - 26
	35 - 15	6G1-45635-00	25 - 50	701-48310-80	30 - 2		32 - 9	68R-85540-00	12 - 1	90185-09M01	29 - 4
6H3-44391-01	16 - 9	6G1-45941-00-EL	26 - 15	701-48310-90	30 - 2	68T-81857-00	15 - 7	68T-85540-00	12 - 1	90201-06M62	18 - 22
68T-44517-00-94	22 - 12	6G1-45943-00-EL	26 - 15	701-48320-00	30 - 2		32 - 3	69F-85540-00	12 - 1		19 - 30
68T-44517-10-94	22 - 12	6G1-45947-00-EL	26 - 15	663-48344-00	19 - 23	68T-81870-00	32 - 32	68T-85542-00	12 - 6	90201-06M94	8 - 6
68T-44526-00	22 - 13	6G1-45952-00-EL	26 - 15		19 - 37	68T-81940-00	13 - 6	68T-85550-01	11 - 1	90201-10M01	26 - 12
68T-44551-00-4D	22 - 17	6G1-45987-02	26 - 11		20 - 12		32 - 23	68T-85550-11	11 - 1	90201-10M02	26 - 18
682-44555-00	22 - 19	68T-46241-00	8 - 7		20 - 14	68T-81945-00	13 - 10	680-85570-00	12 - 10	90201-10M20	29 - 3
68T-44557-00	22 - 18	68T-46297-00	8 - 13	703-48345-01	31 - 19		32 - 27	68T-85580-01	11 - 3	90201-10M63	29 - 8
68T-45111-00-4D	23 - 1	703-48152-00	31 - 56	703-48358-00	31 - 20	68T-81960-00	12 - 15	6H2-85582-00	11 - 5	90201-12472	11 - 15
68T-45111-10-4D	23 - 1	703-48153-00	31 - 3	68R-48501-00	20 - 1	664-81970-61	12 - 15	68T-86111-00	13 - 22	90201-13201	8 - 5
68T-45181-00	24 - 3	703-48189-00	31 - 17	63V-48511-01	22 - 23	68T-82105-00	13 - 2	68T-86112-00	13 - 18	90201-15M89	25 - 44
6G1-45214-00	26 - 6	703-48198-00	31 - 14	68T-48531-00	19 - 1		32 - 39	68T-86117-00	13 - 27	90202-36M55	17 - 20
6G1-45215-00	26 - 7	703-48201-15	30 - 1		20 - 2	6G8-82117-00	13 - 4	68F-86129-00	16 - 4	90206-10M24	21 - 36
68T-45251-00	25 - 6		31 - 1	682-48538-50	19 - 2		32 - 21	90101-06M18	21 - 12	90206-36M21	17 - 19
68T-45300-00-4D	25 - 1	703-48211-01	31 - 60		20 - 3	6A0-82119-00	12 - 18	90105-06M07	22 - 5	90243-04M01	21 - 4
68T-45300-10-4D	25 - 1	703-48212-00	31 - 57	68T-61350-00	29 - 1	68T-82127-00	22 - 2	90105-08M36	4 - 6	90266-04M04	1 - 5
68T-45311-00-4D	25 - 2	703-48213-00	31 - 58	68T-61351-00	29 - 2	68T-82127-10	12 - 20	90105-08M78	4 - 7	90269-02M09	17 - 12
68T-45315-A0	25 - 32	703-48215-00	31 - 42	6E5-61355-00	29 - 7	68T-82150-00	13 - 14	90109-06M81	16 - 12	90280-03M01	8 - 12
	35 - 11	703-48219-00	31 - 29	68T-81328-00	11 - 9		32 - 35		18 - 7		33 - 12
6G1-45316-09	25 - 30	703-48221-00	31 - 55	68T-81800-00	15 - 6	66V-82151-00	13 - 15		19 - 12	90280-04M06	11 - 13
6G1-45317-09	25 - 3	703-48222-00	31 - 26		32 - 2		32 - 36	90109-06M84	21 - 35	90338-06M20	16 - 28
68T-45321-00	23 - 5	703-48223-00	31 - 27	689-81807-12	15 - 8	68T-82171-00	13 - 16	90109-06M86	10 - 27	90340-08M04	25 - 9
68T-45331-00-5B	25 - 29	703-48224-00	31 - 54		32 - 4		32 - 37		18 - 12	90340-10M10	24 - 13
6G1-45361-01-4D	25 - 11	703-48225-00	31 - 28	689-81809-11	15 - 12	6E3-82370-21	12 - 14		19 - 17	90386-08032	17 - 16
6G1-45362-09	25 - 12	703-48226-00	31 - 25		32 - 8	67F-82504-00	12 - 19	90116-08M54	22 - 11	90386-22MA4	21 - 8
63V-45375-00	26 - 10	703-48227-00	31 - 24	689-81810-11	15 - 14	703-82510-42	31 - 43	90116-10M28	17 - 26	90386-30M60	22 - 10
68T-45511-00	25 - 36	703-48232-00	31 - 61		32 - 10	68T-82522-00	12 - 2	90119-06MA1	11 - 8	90386-30048	22 - 8
68T-45511-10	25 - 36	703-48234-00	31 - 18	689-81811-11	15 - 15	703-82531-00	31 - 45	90119-06012	22 - 20	90386-33M96	17 - 21
6G1-45533-00-19	25 - 40	703-48235-00	31 - 4		32 - 11	6F5-82540-00	32 - 31	90119-06013	22 - 21	90386-34M97	17 - 18
6G1-45533-00-20	25 - 40	703-48236-00	31 - 16	689-81812-11	15 - 17	703-82540-00	31 - 49	90119-06014	11 - 6	90387-06M13	21 - 11
6G1-45533-00-21	25 - 40	703-48238-00	31 - 22		32 - 13	682-82556-00	14 - 2	90119-08M29	2 - 4	90387-06M59	18 - 19
6G1-45533-00-22	25 - 40	703-48243-00	31 - 15	689-81813-10	15 - 18		31 - 47	90119-08005	24 - 20		19 - 27
68T-45551-00	25 - 39	703-48244-00	31 - 21		32 - 14	689-8257Y-00	14 - 3	90149-05M13	17 - 13	90387-06M70	6 - 14
68T-45560-00	25 - 41	703-48245-00	31 - 11	689-81820-11	15 - 19	65W-82575-01	14 - 1	90151-05M05	4 - 20	90387-10M42	29 - 6
647-45567-00	25 - 45	703-48246-00	31 - 23		32 - 15	688-82575-01	31 - 46	90151-05003	32 - 41	90387-13M56	5 - 9
68T-45571-00	25 - 43	701-48248-00	31 - 13	68T-81821-00	32 - 33	676-82577-00	31 - 44	90152-05M03	26 - 8	90387-14M03	5 - 10
664-45587-01-10	25 - 42	703-48252-00	31 - 12	68T-81822-00-94	15 - 1	688-8258A-20	31 - 48	90157-05M16	27 - 5	90387-14M49	25 - 4
664-45587-01-12	25 - 42	703-48261-01	31 - 2	689-81826-10	15 - 20	68T-82580-00	13 - 1		28 - 6	90430-08020	25 - 10
664-45587-01-15	25 - 42	703-48264-00	31 - 6		32 - 16	703-82591-00	31 - 52	90170-06015	18 - 15		35 - 5
664-45587-01-18	25 - 42	703-48265-00	31 - 9	6F5-81830-11	15 - 9	703-82592-00	31 - 53		19 - 20	90430-08143	24 - 5
664-45587-01-30	25 - 42	703-48268-00	31 - 5		32 - 5	68T-82594-00	32 - 40	90170-09M03	29 - 5	90430-10M11	24 - 14
664-45587-01-40	25 - 42	703-48271-00	31 - 59	689-81831-00	15 - 10	703-83383-02	31 - 50	90170-12066	11 - 14		35 - 3

NUMERICAL INDEX
INDEX NUMERIQUE

PART NO. NO. PIECES	REF. NO.	PART NO. NO. PIECES	REF. NO.	PART NO. NO. PIECES	REF. NO.	PART NO. NO. PIECES	REF. NO.	PART NO. NO. PIECES	REF. NO.	PART NO. NO. PIECES	REF. NO.
90445-09074	6 - 9	91490-16010	17 - 8	92995-06600	17 - 24	93210-49046	25 - 15	97080-08045	35 - 20	98507-04010	4 - 17
90445-10M18	9 - 5	91490-30020	26 - 14		18 - 24		35 - 7	97095-05010	11 - 7	98580-03015	31 - 37
90445-10M50	9 - 8	91690-30010	13 - 24		18 - 26	93210-53M08	25 - 16	97095-05016	1 - 8	98580-04006	31 - 35
90445-10016	9 - 28	91690-30012	19 - 3		19 - 5		35 - 8		18 - 3	98580-04010	31 - 34
90446-10M86	13 - 5		20 - 4		19 - 32	93306-004U0	25 - 5		19 - 8	98580-05010	31 - 36
	32 - 22	91690-30014	18 - 9		19 - 34		25 - 13		20 - 10	99080-05600	21 - 22
90446-14M66	9 - 10		19 - 14		20 - 6	93430-04M03	21 - 31	97095-06008	23 - 6		21 - 26
	9 - 30	91690-50014	6 - 8		22 - 16	93430-06024	31 - 10	97095-06010	13 - 7		21 - 33
90464-10M53	9 - 32	92903-06600	2 - 10		25 - 18		31 - 62		32 - 24	99510-10114	4 - 5
90464-10M60	18 - 8		2 - 17		32 - 26	93430-07012	25 - 38	97095-06012	12 - 8	99530-12016	2 - 3
	19 - 13		4 - 9		32 - 29	93450-15023	3 - 10		12 - 16		
90465-08M83	13 - 29		6 - 5	92995-08600	15 - 24	93604-12M07	23 - 8		13 - 11		
90465-08M99	6 - 17		6 - 7		22 - 25		24 - 19		13 - 20		
	15 - 26		11 - 11		23 - 10		25 - 26		15 - 27		
90465-11M10	2 - 12	92903-08600	15 - 3		24 - 22		26 - 3		16 - 7		
	9 - 11		15 - 5		26 - 5	93606-12019	24 - 10		18 - 25		
	9 - 31		15 - 22		32 - 20	93700-06M03	22 - 1		19 - 4		
	11 - 12		32 - 18	93101-11M23	25 - 31	94702-00274	4 - 25		19 - 33		
	12 - 21	92903-10600	17 - 14		35 - 10	95380-05600	9 - 23		20 - 5		
	15 - 25	92907-04600	4 - 18	93101-12M70	24 - 6		31 - 7		32 - 28		
	32 - 34	92990-04600	13 - 26		35 - 2	95380-06600	16 - 25	97095-06016	25 - 17		
90465-12M56	13 - 13	92990-05600	12 - 17	93101-15074	25 - 14		19 - 6	97095-06020	4 - 13		
	32 - 30	92990-06100	16 - 23		35 - 6		20 - 7		10 - 23		
90467-09M05	25 - 37	92990-06300	25 - 8	93101-25M69	3 - 2		31 - 39		12 - 4		
90467-09M09	9 - 6	92990-06600	16 - 24		33 - 8	95380-06700	18 - 16	97095-06025	9 - 3		
	9 - 9		21 - 13	93102-18M21	8 - 1		19 - 21		12 - 12		
	9 - 29	92990-08600	31 - 33		33 - 2		21 - 14	97095-06030	8 - 17		
90467-11M08	24 - 8	92995-05600	1 - 9	93102-30M22	3 - 1	95380-08600	22 - 14		9 - 24		
90468-18001	18 - 14		18 - 4		33 - 7	95895-06016	25 - 7	97095-06045	18 - 23		
	19 - 19		19 - 9	93210-03261	13 - 28	97013-06012	11 - 10		19 - 31		
90468-18008	19 - 24		20 - 11	93210-06ME6	25 - 33	97013-06016	8 - 4	97095-08012	12 - 7		
	19 - 38	92995-06100	9 - 25		35 - 12	97013-06020	2 - 9	97095-08014	24 - 4		
	20 - 13		13 - 8	93210-12327	18 - 2	97013-06025	2 - 16	97095-08016	15 - 23		
	20 - 15		32 - 25		19 - 7		6 - 6		32 - 19		
90480-06M19	16 - 17	92995-06600	4 - 14		20 - 9	97013-06035	6 - 4	97095-08030	31 - 32		
	16 - 18		8 - 18	93210-13M63	4 - 22	97013-06070	4 - 8	97380-05025	31 - 8		
90480-10627	8 - 14		9 - 4		33 - 6	97013-08025	15 - 21	97575-06514	23 - 3		
90480-13018	13 - 19		9 - 26	93210-16275	29 - 10		32 - 17	97595-06585	6 - 15		
90480-14M54	23 - 4		10 - 24	93210-20M65	9 - 27	97013-08040	15 - 4	97780-40512	12 - 3		
90480-21M82	16 - 3		12 - 5		33 - 18	97013-08055	15 - 2	97780-60516	1 - 3		
90480-25161	12 - 11		12 - 9	93210-24M79	4 - 24	97013-08055	17 - 23	97880-04008	13 - 25		
90501-12M05	25 - 49		12 - 13		33 - 17	97075-06025	22 - 15	97880-05025	12 - 16		
90501-12M40	5 - 11		12 - 17	93210-29M94	22 - 9	97075-08030	24 - 21	97880-06030	16 - 22		
90501-23215	17 - 15		13 - 9	93210-31MJ5	6 - 13	97075-08035	22 - 24	97885-05008	23 - 7		
90506-18M41	21 - 24		13 - 12		33 - 15		23 - 9		24 - 17		
90506-20M42	21 - 28		13 - 21	93210-44398	25 - 24		26 - 4	97885-05012	17 - 5		
90506-20005	21 - 24		15 - 28		35 - 9	97080-08025	25 - 34	97980-04112	7 - 4		
90506-23003	21 - 28		16 - 8		35 - 18	97080-08045	25 - 27		34 - 7		