

**PARTS
CATALOGUE
CATALOGUE
DE PIECES DETACHEES**

F6AMH'06 (60N2)

F6BMH'06 (60P2)

F8CMH'06 (60R2)



2007/12/28

1E60N-300F1

(2E60N-300F1)

NEWS NO.	DATE	COMMENT
PE0-OM-070049	Dec.,20,2007	MOD:F6A(60N2,3) CARBURETOR ASSY LIST/ILLUSTRATION REVISION

FOREWORD

This Parts Catalogue is related to the parts for the model(s) on the cover page. When you are ordering replacement parts, please refer to this Parts Catalogue and quote both part numbers and part names correctly.

1. Modifications or additions which have been made after the issue of the Parts Catalogue will be announced in the Parts News.
It is advisable that you make the necessary corrections to the Parts Catalogue according to the Parts News.

2. Abbreviations

The following abbreviations are used in this Parts Catalogue.

“UR” Use specified parts number.

“UN” Use as many as needed.

“AP” Alternate Parts

“LM” Locally Made (Parts need to be ordered locally)

“F#” Frame No. (Applicable machine No.)

“O/S” Over Size

3. The number of components for assembly

- Parts, which are to be supplied in an assembly, are listed with a dot (.) in front of the part name as shown below.
- The numeral appearing to the right of each component part indicates the quantity of parts for each assembly unit.

PART NO.	DESCRIPTION	Q'TY	REMARKS
2F5-83310-60	FRONT FLASHER LIGHT ASSY	2	
115-83311-60	.BULB (6V-18W)	1	

4. Applicable colours of graphics are represented in the “REMARKS” as shown below.

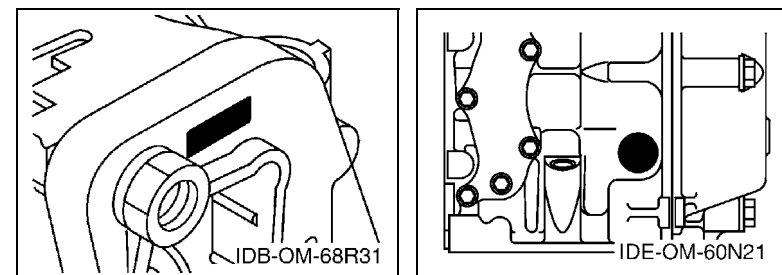
PART NO.	DESCRIPTION	Q'TY	REMARKS
2N4-24110-00-X5	FUEL TANK COMP.	2	MXR
3J1-24240-10	.GRAPHIC, FUEL TANK	1	FOR MXR

5. Note that the illustrations for reference in finding parts numbers are not to be used for assembling. When assembling, please use the applicable service manual.

6. The asterisk (*) before a reference number indicates modified items after the first edition.

7. Applicable Serial No.

Engine Serial No.



8. Applicable Engine Starting Serial No.

Model	Serial No.	Model	Serial No.
F6A	60N-1003056	F6B	60N-1000351
F8C	60R-1005031		

9. Applicable Colour Code

Abbreviation	Colour Name	Colour Code
DBNM2	DARK BLUISH GRAY METALLIC 2	004D

10. Quantity Column Information

Column No.	Name Of Q'ty Column	Applicable Model
1	60N2	F6AMH
2	60P2	F6BMH
3	60R2	F8CMH

AVANT-PROPOS

Ce catalogue de pièces détachées concerne les pièces pour le(s) modèle(s) indiqué(s) sur la page de couverture. Lorsque vous commandez des pièces de rechange, veuillez vous référer à ce catalogue de pièces détachées et indiquer clairement les numéros et les noms des pièces détachées.

1. Les modifications ou ajouts ayant été effectués après la parution du catalogue de pièces détachées seront décrits dans les Bulletins d'information concernant les pièces détachées.
Il est recommandé que vous apportiez les corrections nécessaires au catalogue des pièces détachées en vous référant aux Bulletins d'information.

2. Abréviations

Dans ce catalogue, les abréviations suivantes sont utilisées:

“UR” Utiliser le numéro de pièces spécifié.

“UN” Utiliser autant que nécessaire.

“AP” Pièces de substitution

“LM” Fabrication locale (les pièces doivent être commandées localement.)

“F#” N° de cadre (applicable au N° de série)

“O/S” Surdimensionné

3. Nombre de pièces d'un assemblage

- Les pièces fournies comme composants d'un assemblage sont précédées d'un point (.) de la manière indiquée ci-dessous.
- Le chiffre apparaissant à la droite de chaque composant indique la quantité de pièces pour chaque unité d'assemblage.

N° PIECES	DESCRIPTION	QTE	REMARQUES
2F5-83310-60	ENS. CLIGNOTANT AVANT	2	
115-83311-60	.AMPOULE (6V-18W)	1	

4. Les couleurs concernant les graphiques sont indiquées dans la colonne “REMARQUES”, comme indiqué ci-dessous.

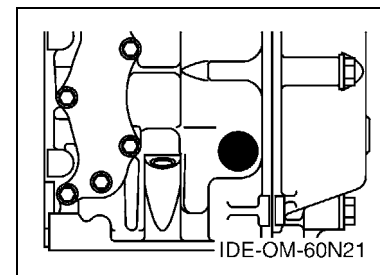
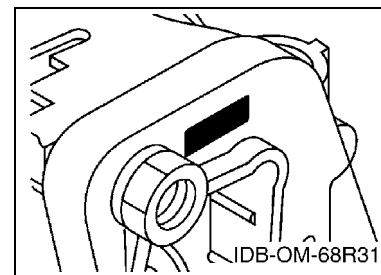
N° PIECES	DESCRIPTION	QTE	REMARQUES
2N4-24110-00-X5	RESERVOIR A ESSENCE.	2	MXR
3J1-24240-10	.GRAPHIQUE	1	POUR MXR

5. Veuillez noter que les illustrations sont indiquées à titre de référence pour trouver les numéros de pièces, non pour être utilisées lors de l'assemblage. Lors de l'assemblage, veuillez utiliser le manuel d'entretien adéquat.

6. L'astérisque (*) placé devant un numéro de référence indique des éléments qui ont été modifiés après la première édition.

7. N° de série applicable

N° de Série du moteur



8. N° de série initial du moteur applicable

Modèle	N° de série	Modèle	N° de série
F6A	60N-1003056	F6B	60N-1000351
F8C	60R-1005031		

9. Code couleur applicable

Abréviation	Nom de la couleur	Code couleur
DBNM2	DARK BLUISH GRAY METALLIC 2	004D

10. Informations relatives à la colonne Quantité

N° de la colonne	Nom de la colonne Qté	Modèle applicable
1	60N2	F6AMH
2	60P2	F6BMH
3	60R2	F8CMH

CONTENTS

SHEET1/2

TOP COWLING	A4
CYLINDER & CRANKCASE 1	A5
CRANKSHAFT & PISTON	A6
CYLINDER & CRANKCASE 2	A7
VALVE	B1
INTAKE	B2
CARBURETOR	B3
OIL PUMP	B4
FUEL	B5
STARTER	B7
GENERATOR	C2
ELECTRICAL 1	C3
ELECTRICAL 2	C5
BOTTOM COWLING	C6
STEERING	D1
CONTROL	D3
REMO CON ATTACHMENT	D5
BRACKET 1	D6
BRACKET 2	E1
UPPER CASING	E2
OIL PAN	E3
LOWER CASING & DRIVE 1	E4
LOWER CASING & DRIVE 2	E7
FUEL TANK	F1
STEERING GUIDE	F2
OPTIONAL PARTS 1	F3
OPTIONAL PARTS 2	F5
REPAIR KIT 1	F6
REPAIR KIT 2	F7

INDEX

NUMERICAL INDEX	G1
-----------------------	----

SHEET2/2

REPAIR KIT 3	A4*
--------------------	-----

INDEX

NUMERICAL INDEX	G1*
-----------------------	-----

TABLE DES MATIERES

Feuille1/2

CAPOT SUPERIEUR	A4
CYLINDRE & CARTER 1	A5
VILEBREQUIN & PISTON	A6
CYLINDRE & CARTER 2	A7
SOUPAPE	B1
ADMISSION	B2
CARBURATEUR	B3
POMPE A HUILE	B4
CARBURANT	B5
DEMARREUR	B7
GENERATRICE	C2
PARTIE ELECTRIQUE 1	C3
PARTIE ELECTRIQUE 2	C5
CAPOT INFERIEUR	C6
DIRECTION	D1
COMMANDE	D3
COMMANDE A DISTANCE	D5
SUPPORT 1	D6
SUPPORT 2	E1
FOURREAU	E2
VENTILATEUR D'HUILE	E3
BOITIER D'HELICE TRANSMISSION1	E4
BOITIER D'HELICE TRANSMISSION2	E7
RESERVOIR A CARBURANT	F1
FIXATION DE DIRECTION	F2
PIECES OPTIONNELLES 1	F3
PIECES OPTIONNELLES 2	F5
KITS DE REPARATION 1	F6
KITS DE REPARATION 2	F7

INDEX

INDEX NUMERIQUE	G1
-----------------------	----

Feuille2/2

KITS DE PEPARATION 3	A4*
----------------------------	-----

INDEX

INDEX NUMERIQUE	G1*
-----------------------	-----

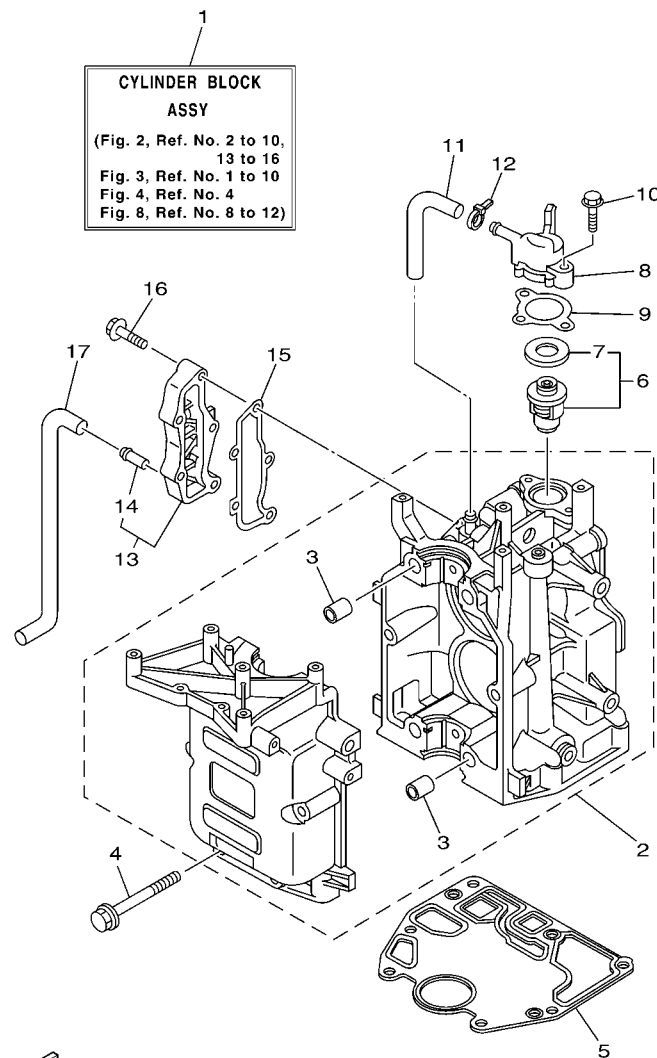


FIG. 2 CYLINDER & CRANKCASE 1 CYLINDRE & CARTER 1



FIG. 3 CRANKSHAFT & PISTON

VILEBREQUIN & PISTON

REF. NO.	PART NO. N° PIECES	DESCRIPTION DESCRIPTION	60N2	60P2	60R2		REMARKS REMARQUES
1	93102-30M22	OIL SEAL JOINT SPY	1	1	1		
2	93101-25M69	OIL SEAL JOINT SPY	1	1	1		
3	60R-E1411-00	CRANKSHAFT VILEBREQUIN COMPLET	1	1	1		
4	68T-11416-00	PLANE BEARING, CRANKSHAFT 1 COUSSINET DE VILEBREQUIN 1	4	4	4		UR BROWN UR BROWN
	68T-11416-10	PLANE BEARING, CRANKSHAFT 1 COUSSINET DE VILEBREQUIN 1	4	4	4		UR BLACK UR BLACK
	68T-11416-20	PLANE BEARING, CRANKSHAFT 1 COUSSINET DE VILEBREQUIN 1	4	4	4		UR BLUE UR BLUE
5	68T-11650-00	CONNECTING ROD ASSY BIELLE COMPLETE	2	2	2		
6	67D-11654-00	.BOLT, CONNECTING ROD .BOULON, BIELLE	2	2	2		
7	60R-E1631-00-96	PISTON (STD) PISTON (STD)	2	2	2		
	60R-E1635-00	PISTON (0.25MM O/S) PISTON (0.25MM O/S)	2	2	2		AP AP
	60R-E1636-00	PISTON (0.50MM O/S) PISTON (0.50MM O/S)	2	2	2		AP AP
8	60R-E1603-00	PISTON RING SET (STD) JEU DE SEGMENTS (STD)	2	2	2		
	60R-E1604-00	PISTON RING SET (0.25MM O/S) JEU DE SEGMENTS (0.25MM O/S)	2	2	2		AP AP
	60R-E1605-00	PISTON RING SET (0.50MM O/S) JEU DE SEGMENTS (0.50MM O/S)	2	2	2		AP AP
9	60R-E1633-00	PIN, PISTON AXE, PISTON	2	2	2		
10	93450-15023	CIRCLIP CIRCLIP, TYPE S	4	4	4		

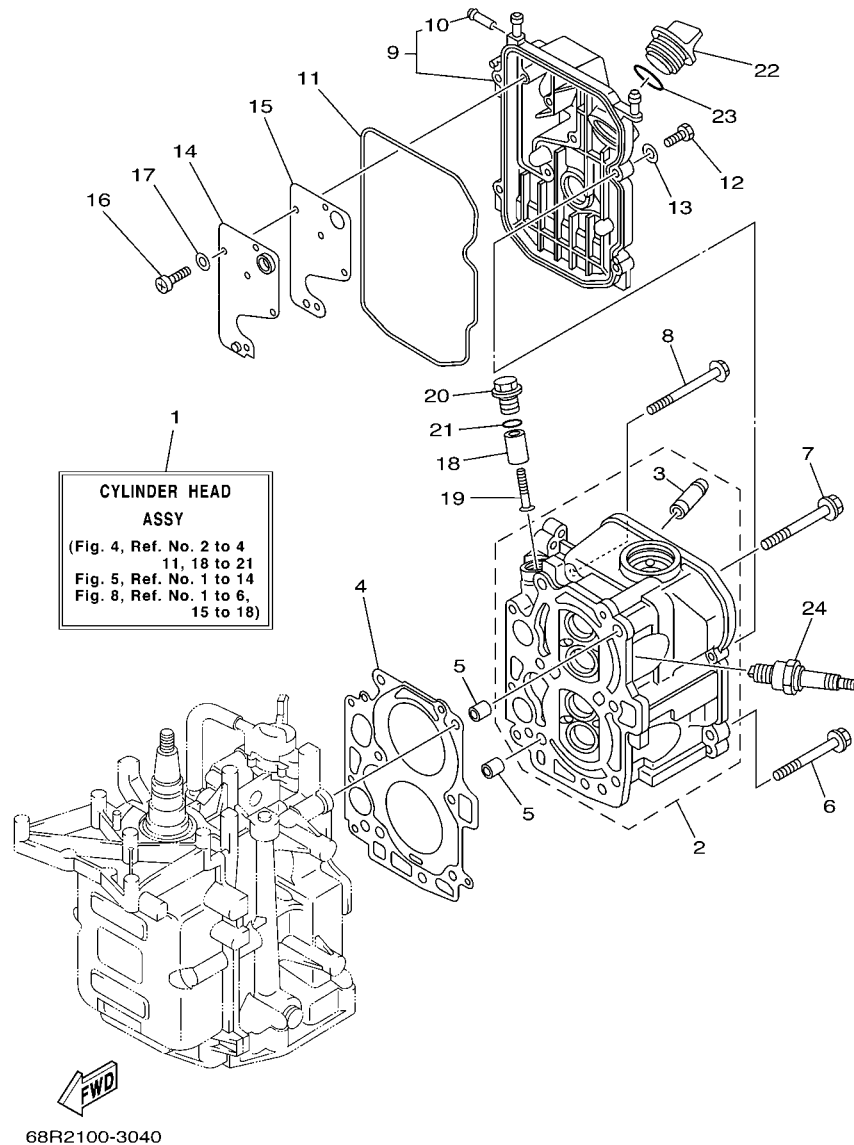


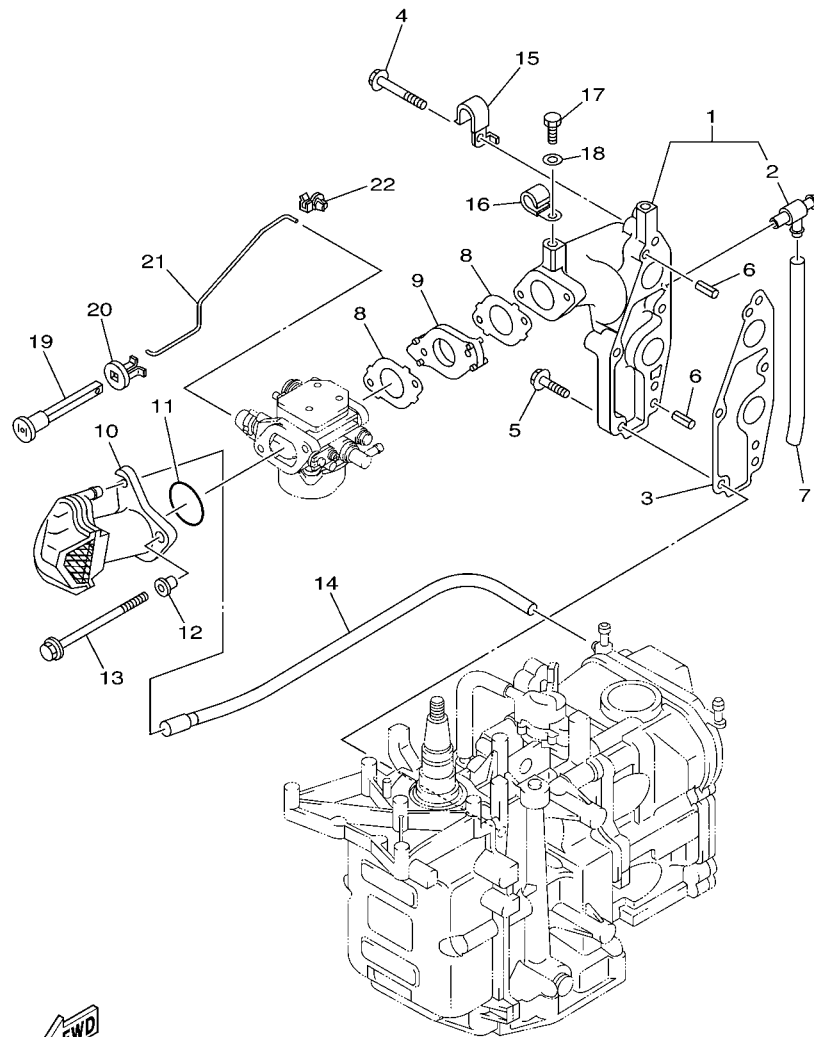
FIG. 4 CYLINDER & CRANKCASE 2 CYLINDRE & CARTER 2

REF. NO.	PART NO. N° PIECES	DESCRIPTION DESCRIPTION	60N2	60P2	60R2	REMARKS REMARQUES
1	60R-WE09A-00-1S	CYLINDER HEAD ASSY CULASSE (ENS.)	1	1	1	
2	60R-E1111-00-1S	HEAD, CYLINDER 1 CULASSE	1	1	1	
3	67D-11133-10	.GUIDE, VALVE 1 .GUIDE, SOUPAPE 1	4	4	4	
4	68T-11181-00	GASKET, CYLINDER HEAD 1 JOINT, DE CULASSE 1	1	1	1	
5	99510-10114	PIN, DOWEL GOUJON, D'ASSEMBLAGE	2	2	2	
6	90105-08M36	BOLT, FLANGE BOULON	2	2	2	
7	90105-08M78	BOLT, FLANGE BOULON	4	4	4	
8	90119-06049	BOLT, WITH WASHER BOULON, AVEC RONDELLE	3	3	3	
9	60R-E1191-00-1S	COVER, CYLINDER HEAD 1 COUVERCLE, CULASSE 1	1	1	1	
10	650-24378-00	.PIPE, JOINT 4 .DURITE RACCORDEMENT 4	1	1	1	
11	68T-11356-00	SEAL, CYLINDER 2 JOINT, SPY CYLINDRE	1	1	1	
12	97095-06020	BOLT BOULON	4	4	4	
13	92995-06600	WASHER RONDELLE	4	4	4	
14	68T-11168-00	COVER, BREATHER COUVERCLE, RENIFLARD	1	1	1	
15	68T-11169-A0	GASKET, BREATHER COVER JOINT, COUVERCLE DE RENIFLARD	1	1	1	
16	98507-04010	SCREW, PAN HEAD VIS, TETE TRONCONIQUE	5	5	5	
17	92907-04600	WASHER RONDELLE	5	5	5	
18	6G8-11325-00	ANODE ANODE	1	1	1	
19	97880-05025	SCREW, PAN HEAD VIS, TETE TRONCONIQUE	1	1	1	
20	6G8-11197-01	PLUG, BLIND PLOT, BORGNE	1	1	1	
21	93210-13M63	O-RING JOINT TORIQUE	1	1	1	
22	69M-E5363-00	PLUG, OIL PLOT, HUILE	1	1	1	
23	93210-24M79	O-RING JOINT TORIQUE	1	1	1	
24	94702-00274	PLUG, SPARK (NGK BR6HS-10) BOUGIE D'ALLUMAGE(NGK BR6HS-10)	2	2	2	



SOUPAPE

B1

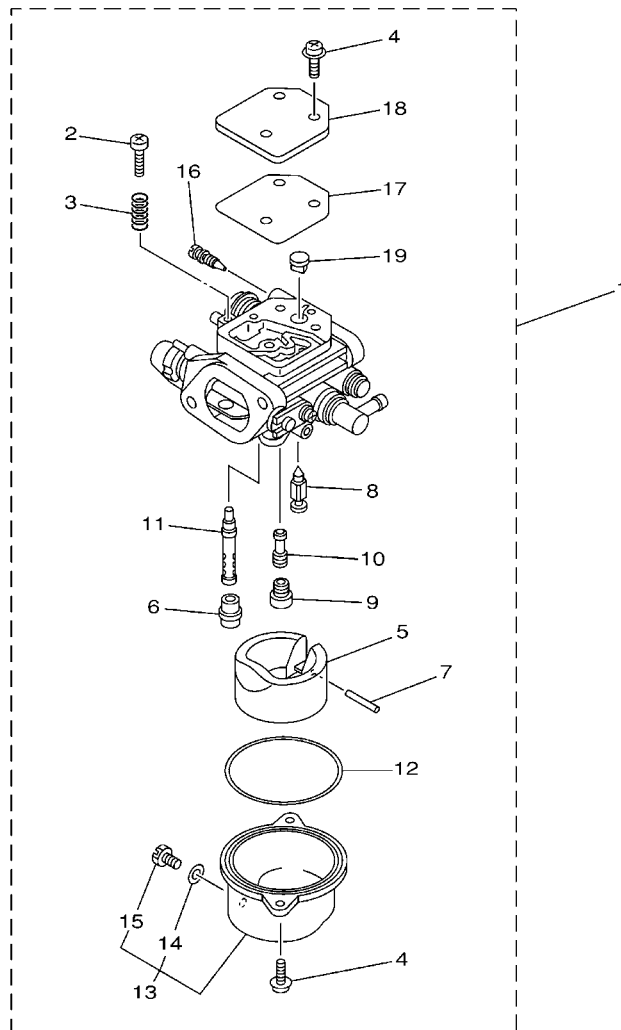



60S1100-D060

FIG. 6 INTAKE

ADMISSION

REF. NO.	PART NO. N° PIECES	DESCRIPTION DESCRIPTION	60N2	60P2	60R2	REMARKS REMARQUES
1	60R-E3641-20-1S	MANIFOLD 1 TUBULURE 1	1	1	1	FLUSHING KIT FLUSHING KIT
2	67F-12482-00	.PIPE 2 .DURITE 2	1	1	1	
3	68T-13645-00	GASKET, MANIFOLD 1 JOINT, TUBULURE 1	1	1	1	
4	90119-06MA5	BOLT, WITH WASHER BOULON, AVEC RONDELLE	3	3	3	
5	90119-06MA3	BOLT, WITH WASHER BOULON, AVEC RONDELLE	2	2	2	
6	91690-50014	PIN, SPRING AGRAFFE	2	2	2	
7	90445-09812	HOSE (L93) DURITE (L93)	1	1	1	FLUSHING KIT FLUSHING KIT
8	60R-E3646-A0	GASKET, MANIFOLD 2 JOINT, TUBULURE 2	2	2	2	
9	68T-14271-00	INSULATOR ISOLATEUR	1	1	1	
10	60R-E4440-00	SILENCER ASSY, INTAKE SIENCIEUX D'ADMISSION	1	1	1	
11	93210-31MJ5	O-RING JOINT TORIQUE	1	1	1	
12	90387-06M70	COLLAR COLLERETTE	2	2	2	
13	97595-06585	BOLT, WITH WASHER VIS HEXAGONAL AVC RONDELLE	2	2	2	
14	60R-E2483-00	PIPE 3 DURITE 3	1	1	1	
15	90465-08M99	CLAMP BRIDE	1	1	1	
16	90465-08M83	CLAMP BRIDE	1	1	1	FLUSHING KIT FLUSHING KIT
17	97095-06010	BOLT BOULON	1	1	1	FLUSHING KIT FLUSHING KIT
18	92995-06600	WASHER RONDELLE	1	1	1	FLUSHING KIT FLUSHING KIT
19	6H4-41271-01	KNOB, CHOKE BOUTON DE STARTER	1	1	1	
20	689-41273-00	GROMMET PASSE-FIL	1	1	1	
21	68T-41256-00	ROD, CHOKE 1 TRINGLE 1, STARTER	1	1	1	
22	6J8-41262-00	JOINT, CHOKE LEVER RACCORD, LEVIER DE STARTER	1	1	1	

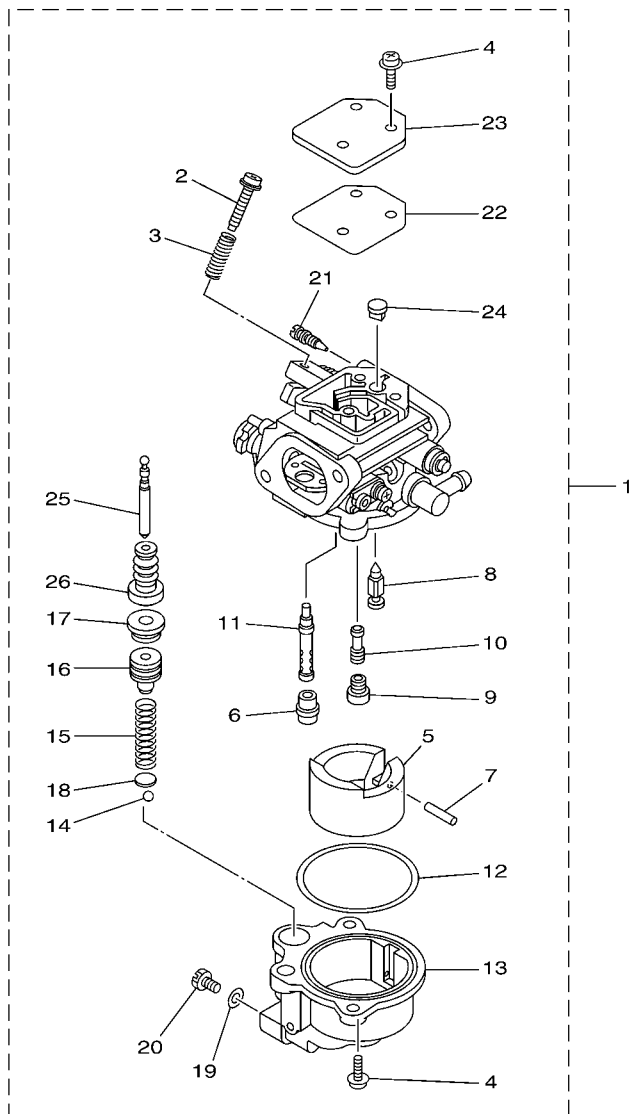


68R0010-0070

FIG. 7 CARBURETOR

CARBURATEUR

REF. NO.	PART NO. N° PIECES	DESCRIPTION DESCRIPTION	60N2	60P2	60R2	REMARKS REMARQUES
1						
	69F-14301-C0	CARBURETOR ASSY 1 CARBURATEUR COMPLET 1		1		
	68T-14301-20	CARBURETOR ASSY 1 CARBURATEUR COMPLET 1			1	
2	6E5-14321-00	.SCREW, THROTTLE .VIS, ACCELERATEUR		1	1	
3	6J8-14334-00	.SPRING, THROTTLE .RESSORT, ACCELERATEUR		1	1	
4	97980-04112	.SCREW, WITH WASHER .VIS, AVEC RONDELLE		5	5	
5	68T-14385-00	.FLOAT .FLOTTEUR		1	1	
6	67D-14966-00	.RUBBER CAP .CAOUTCHOUC CASQUILLO		1	1	
7	67D-14386-00	.PIN, FLOAT .AXE, FLOTTEUR		1	1	
8	68T-14546-00	.VALVE, NEEDLE .POINTEAU		1	1	
9						
	68R-1492E-2H	.JET, MAIN (#55) .GICLEUR, PRINCIPAL (#55)		1		
	68T-1492E-37	.JET, MAIN (#74) .GICLEUR, PRINCIPAL (#74)			1	
10						
	68R-1492F-18	.JET, AIR SLOW (#36) .GICLEUR, AIR (#36)		1		
	68T-1492F-1K	.JET, AIR SLOW (#39) .GICLEUR, AIR (#39)			1	
11	68T-1492A-00	.NOZZLE, MAIN .PUITS D'AIGUILLE		1	1	
12	67D-14984-00	.GASKET, FLOAT CHAMBER .JOINT, CUVE DE FLOTTEUR		1	1	
13	68T-14981-00	.BODY, FLOAT CHAMBER .CORPS, CUVE DE FLOTTEUR		1	1	
14	6J8-14959-00	.GASKET .JOINT		1	1	
15	66T-14991-00	.PLUG, DRAIN .BOUCHON DE VIDANGE		1	1	
16	68T-14323-20	.SCREW, AIR ADJUSTING .VIS DE DOSEUR D'AIR		1	1	
17	67D-14536-00	.GASKET .JOINT		1	1	
18	67D-14527-00	.PLATE .PLAQUE		1	1	
19	68T-14126-00	.PLUG .PLOT		1	1	

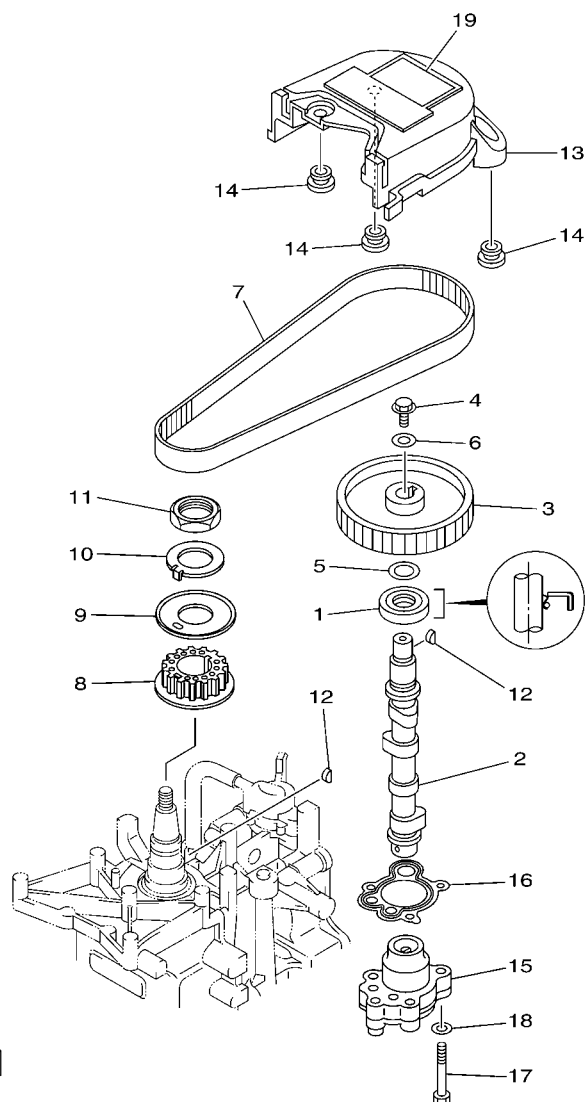


6AU1300-G070

FIG. 7 CARBURETOR

CARBURATEUR

REF. NO.	PART NO. N° PIECES	DESCRIPTION DESCRIPTION	60N2	60P2	60R2	REMARKS REMARQUES
1	60N-14301-30	CARBURETOR ASSY 1 CARBURATEUR COMPLET 1	1			
2	6E5-14321-00	.SCREW, THROTTLE .VIS, ACCELERATEUR	1			
3	6J8-14334-00	.SPRING, THROTTLE .RESSORT, ACCELERATEUR	1			
4	97980-04112	.SCREW, WITH WASHER .VIS, AVEC RONDELLE	5			
5	6AU-14385-00	.FLOAT .FLOTTEUR	1			
6	67D-14966-00	.RUBBER CAP .CAOUTCHOUC CASQUILLO	1			
7	67D-14386-00	.PIN, FLOAT .AXE, FLOTTEUR	1			
8	68T-14546-00	.VALVE, NEEDLE .POINTEAU	1			
9	6AU-1492E-43	.JET, MAIN (#86) .GICLEUR, PRINCIPAL (#86)	1			
10	6AU-1492F-20	.JET, AIR SLOW (#40) .GICLEUR, AIR (#40)	1			
11	6AU-1492A-00	.NOZZLE, MAIN .PUITS D'AIGUILLE	1			
12	6AU-14984-00	.GASKET, FLOAT CHAMBER .JOINT, CUVE DE FLOTTEUR	1			
13	6AU-14982-00	.HOLDER .SUPPORT	1			
14	6AU-1431B-00	.BALL .BILLE	1			
15	6AU-14335-00	.SPRING, PLUNGER .RESSORT, PLONGEUR	1			
16	6AU-14371-00	.PLUNGER, STARTER .PLONGEUR, STARTER	1			
17	6AU-1431A-00	.GUIDE .GUIDE	1			
18	6AU-14918-00	.RING .BAGUE	1			
19	6J8-14959-00	.GASKET .JOINT	1			
20	66T-14991-00	.PLUG, DRAIN .BOUCHON DE VIDANGE	1			
21	68T-14323-20	.SCREW, AIR ADJUSTING .VIS DE DOSEUR D'AIR	1			
22	67D-14536-00	.GASKET .JOINT	1			
23	67D-14527-00	.PLATE .PLAQUE	1			
24	68T-14126-00	.PLUG .PLOT	1			
25	6AU-14379-00	.ROD, STARTER .TRINGLE, STARTER	1			
26	6AU-14373-00	.COVER, PLUNGER CAP .COUVERCLE DE PLONGEUR	1			



60S1300-D080

FIG. 8 OIL PUMP

POMPE A HUILE

REF. NO.	PART NO. N° PIECES	DESCRIPTION DESCRIPTION	60N2	60P2	60R2		REMARKS REMARQUES
1	93102-18M21	OIL SEAL JOINT SPY	1	1	1		
2	60R-E2171-00	CAMSHAFT 1 ARBRE A CAMES 1	1	1	1		
3	60R-E1537-00-94	GEAR, DRIVEN PIGNON SECONDAIRE	1	1	1		
4	90105-06M14	BOLT FLANGE BOULON	1	1	1		
5	90201-13201	WASHER, PLATE RONDELLE, PLATE	1	1	1		
6	90201-06M94	WASHER, PLATE RONDELLE, PLATE	1	1	1		
7	60R-G6241-00	V-BELT COURROIE TRAPEZOIDALE	1	1	1		
8	60R-E1536-00	GEAR, DRIVE ENGRENAGE, MENANT	1	1	1		
9	68T-11557-00	WASHER 1 RONDELLE 1	1	1	1		
10	6G8-11587-01	WASHER, LOCK RONDELLE, FREIN	1	1	1		
11	90170-24M09	NUT ECROU	1	1	1		
12	90280-03M01	KEY, WOODRUFF CLAVETTE, DEMI-LUNE	2	2	2		
13	60R-G6297-00	COVER, DUST COUVERCLE, POUSSIERE	1	1	1		
14	90480-10627	GROMMET PASSE-FIL	3	3	3		
15	68T-13300-00	OIL PUMP ASSY POMPE A HUILE COMPLETE	1	1	1		
16	68T-13329-00	GASKET, PUMP COVER JOINT, COUVERCLE DE POMPE	1	1	1		
17	97095-06030	BOLT BOULON	3	3	3		
18	92995-06600	WASHER RONDELLE	3	3	3		
19	60R-E2138-60	MARK, CAUTION MAKER	1	1	1		

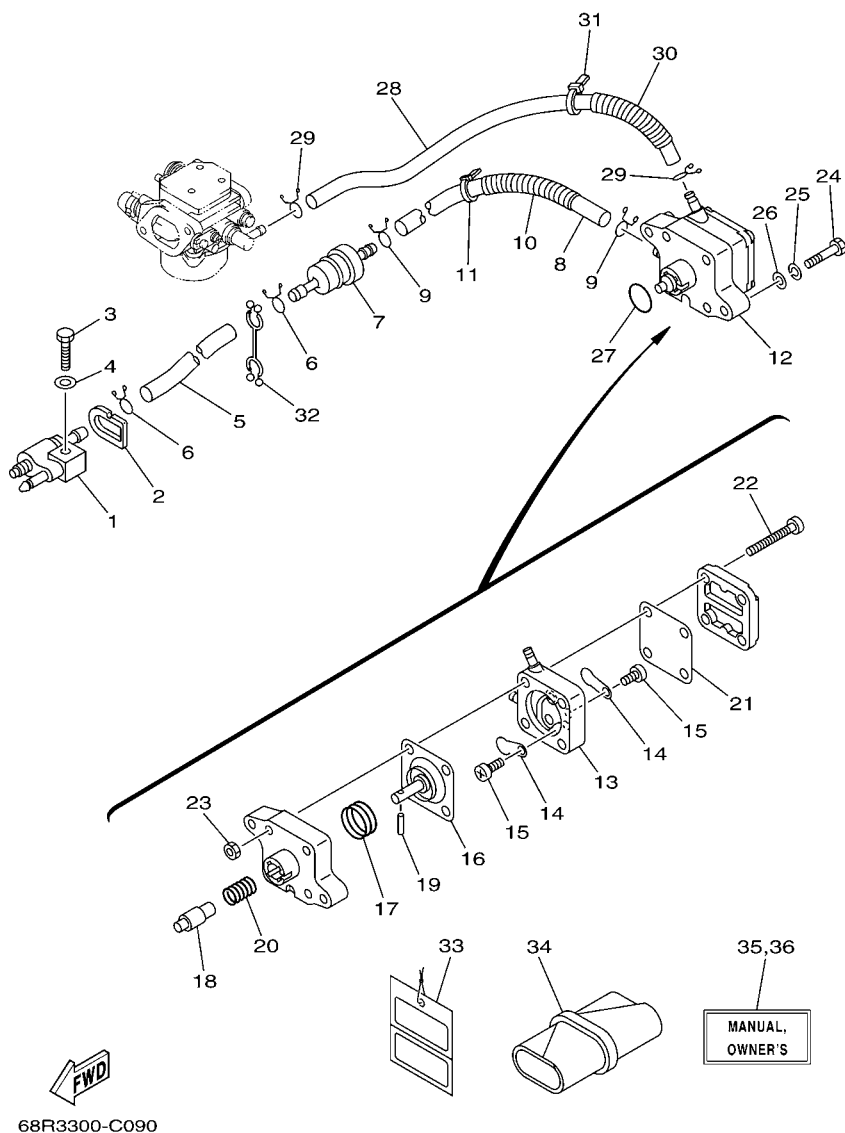
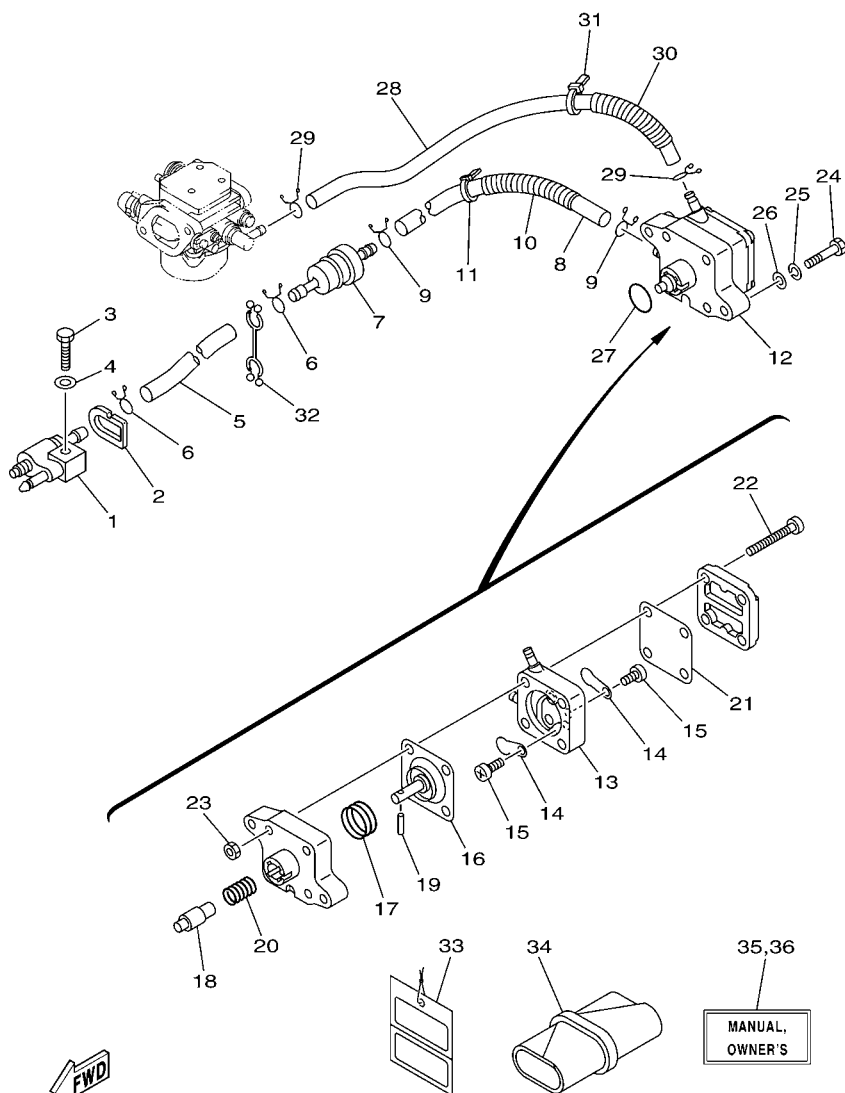


FIG. 9 FUEL

CARBURANT

REF. NO.	PART NO. N° PIECES	DESCRIPTION DESCRIPTION	60N2	60P2	60R2	REMARKS REMARQUES
1	6G1-24304-02	FUEL PIPE JOINT COMP. 1 DURITE RACCORDEMT. A ESSENCE	1	1	1	
2	60R-F4329-00	SEAL JOINT	1	1	1	
3	97095-06025	BOLT BOULON	1	1	1	
4	92995-06600	WASHER RONDELLE	1	1	1	
5	90445-10809	HOSE (L295) DURITE (L295)	1	1	1	
6	90467-09M09	CLIP JONC	2	2	2	
7	68T-24251-00	STRAINER 1 FILTRE 1	1	1	1	
8	90445-10811	HOSE (L170) DURITE (L170)	1	1	1	
9	90467-09M09	CLIP JONC	2	2	2	
10	90446-14M66	HOSE (L40) DURITE (L40)	1	1	1	
11	90465-11M10	CLAMP BRIDE	1	1	1	
12	68T-24410-00	FUEL PUMP ASSY POMPE A ESSENCE	1	1	1	
13	66M-24413-01	.BODY 2 .CORPS 2	1	1	1	
14	6A0-24421-01	.VALVE, CHECK .SOUPAPE, RETENUE	2	2	2	
15	6E7-14325-00	.SCREW, PAN HEAD .VIS TETE CONIQUE	2	2	2	
16	66M-24411-00	.DIAPHRAGM .DIAPHRAGME	1	1	1	
17	66M-24423-00	.SPRING, DIAPHRAGM .RESSORT, DIAPHRAGME	1	1	1	
18	66M-13131-00	.PLUNGER .PLONGEUR	1	1	1	
19	66M-24374-00	.PIN .GOUPILLE	1	1	1	
20	66M-24454-00	.SPRING .RESSORT	1	1	1	
21	66M-24471-00	.DIAPHRAGM .DIAPHRAGME	1	1	1	
22	66M-24444-00	.SCREW .VIS	4	4	4	
23	95380-04600	.NUT .ECROU	4	4	4	
24	97095-06030	BOLT BOULON	2	2	2	
25	92995-06100	WASHER, SPRING RONDELLE, GROUVER	2	2	2	
26	92995-06600	WASHER RONDELLE	2	2	2	
27	93210-20M65	O-RING JOINT TORIQUE	1	1	1	

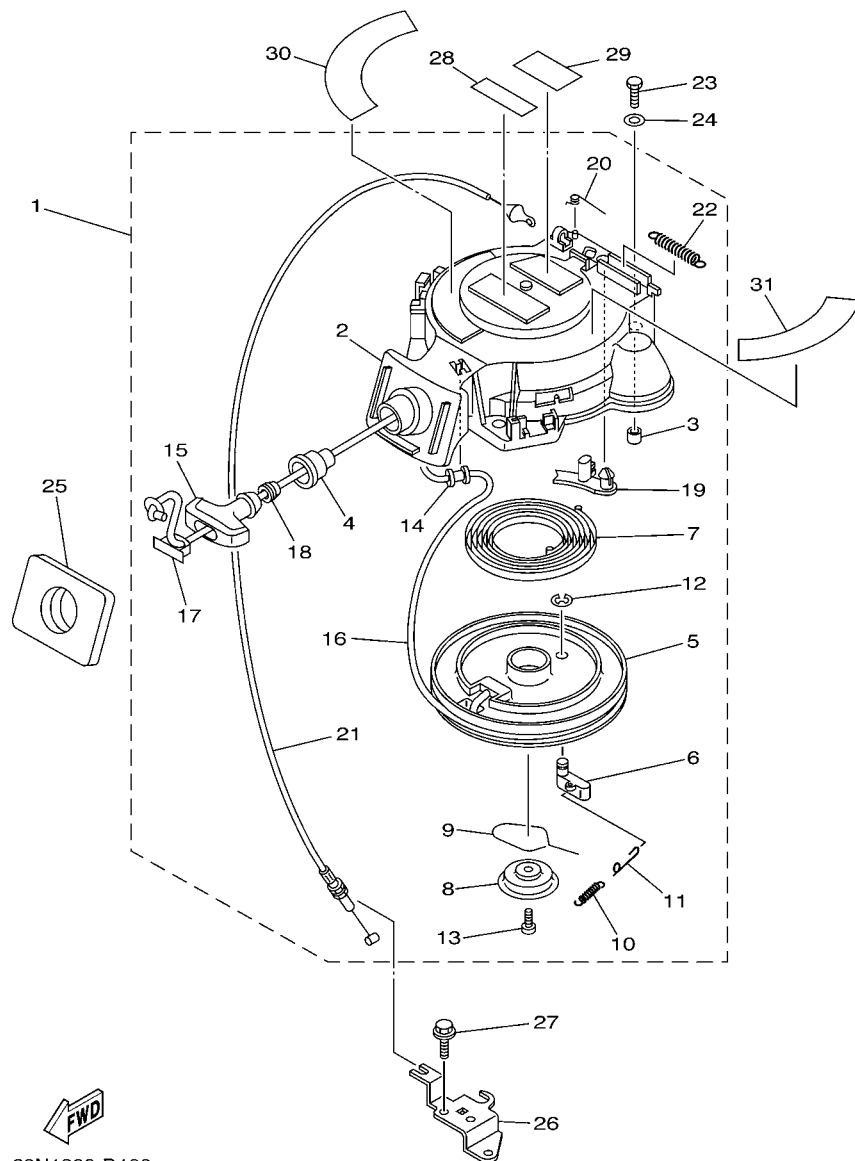


68R3300-C090

FIG. 9 FUEL

CARBURANT

REF. NO.	PART NO. N° PIECES	DESCRIPTION DESCRIPTION	60N2	60P2	60R2		REMARKS REMARQUES
28	90445-10810	HOSE (L280) DURITE (L280)	1	1	1		
29	90467-09M09	CLIP JONC	2	2	2		
30	90446-14M66	HOSE (L40) DURITE (L40)	1	1	1		
31	90465-11M10	CLAMP BRIDE	1	1	1		
32	90464-10M53	CLAMP BRIDE	1	1	1		
33	61H-2819R-31	TAG, WARNING ETIQUETTE, AVERTISSEMENT	1	1	1		
34	68T-28100-00	TOOL KIT TROUSSE A OUTILS	1	1	1		
35	60R-F8199-71-E0	MANUAL, OWNER'S MANUEL D'UTILISATION	1	1	1		UR (E)
	60R-F8199-71-F0	MANUAL, OWNER'S MANUEL D'UTILISATION	1	1	1		UR (F)
	60R-F8199-71-S0	MANUAL, OWNER'S MANUEL D'UTILISATION	1	1	1		UR (ES)
	60R-F8199-71-G0	MANUAL, OWNER'S MANUEL D'UTILISATION	1	1	1		UR (D)
	60R-F8199-71-D0	MANUAL, OWNER'S MANUEL D'UTILISATION	1	1	1		UR (NL)
	60R-F8199-71-H0	MANUAL, OWNER'S MANUEL D'UTILISATION	1	1	1		UR (I)
36	60R-F8199-81-K0	MANUAL, OWNER'S MANUEL D'UTILISATION	1	1	1		UR (DK)
	60R-F8199-81-R0	MANUAL, OWNER'S MANUEL D'UTILISATION	1	1	1		UR (GR)
	60R-F8199-81-P0	MANUAL, OWNER'S MANUEL D'UTILISATION	1	1	1		UR (P)
	60R-F8199-81-N0	MANUAL, OWNER'S MANUEL D'UTILISATION	1	1	1		UR (N)
	60R-F8199-81-M0	MANUAL, OWNER'S MANUEL D'UTILISATION	1	1	1		UR (S)
	60R-F8199-81-L0	MANUAL, OWNER'S MANUEL D'UTILISATION	1	1	1		UR (SF)



*1: CUT FROM 50M ROLLS, PART NO. 90890-44373, CUTTING LENGTH 1.8M

*1: A PRELEVER SUR BOBINE 50M, REFERENCE 90890-44373, LONGUEUR DE COUPE 1.8M

FIG. 10 STARTER

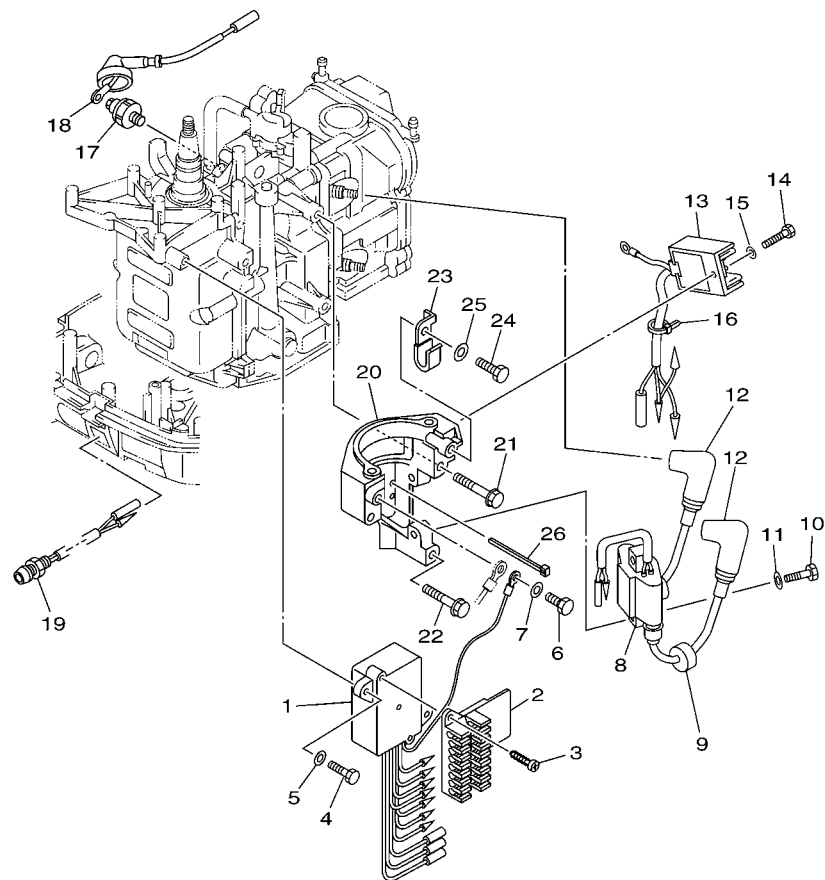
DEMARREUR

REF. NO.	PART NO. N° PIECES	DESCRIPTION DESCRIPTION	60N2	60P2	60R2		REMARKS REMARQUES
1	68T-15710-11	STARTER ASSY DEMARREUR COMPLET	1	1	1		
2	68T-15711-02	.CASE, STARTER .CARTER DE DEMARREUR	1	1	1		
3	67D-15764-00	.COLLAR 1 .COLLERETTE 1	3	3	3		
4	68T-15795-00	.GUIDE, ROPE .GUIDE DE CABLE	1	1	1		
5	63V-15714-00	.DRUM, SHEAVE .TAMBOUR, POULIE	1	1	1		
6	63V-15741-00	.PAWL, DRIVE .CLIQUET, ENTRAINEMENT	1	1	1		
7	63V-15713-00	.SPRING, STARTER .RESSORT DE DEMARREUR	1	1	1		
8	68T-15716-00	.PLATE, DRIVE .PLAQUE, ENTRAINEMENT	1	1	1		
9	63V-15705-01	.SPRING, DRIVE PAWL .RESSORT DE CLIQUET	1	1	1		
10	63V-15767-01	.SPRING .RESSORT	1	1	1		
11	68T-15784-00	.SPRING, RETURN .RESSORT, RAPPEL	1	1	1		
12	63V-15744-00	.CIRCLIP .CIRCLIP	1	1	1		
13	68T-15793-00	.SCREW .VIS	1	1	1		
14	68T-15764-00	.COLLAR 1 .COLLERETTE 1	1	1	1		
15	6G1-15755-00	.HANDLE, STARTER .POIGNEE, DE DEMARREUR	1	1	1		
16	*	.WIRE, STARTER (L:1800MM) .CABLE DE DEMARREUR (L:1800MM)	1	1	1		*1 *1
17	6G1-15779-00	.COVER .COUVERCLE	1	1	1		
18	6A0-15789-00	.DAMPER .AMORTISSEUR	1	1	1		
19	68T-15794-00	.STOPPER .BUTEE	1	1	1		
20	66T-15734-00	.SPRING, RETURN .RESSORT, RAPPEL	1	1	1		
21	68T-15770-00	.CABLE COMP., STARTER STOP .CABLE, BUTEE DE DEMAR	1	1	1		
22	66T-15731-00	.SPRING, RETURN .RESSORT, RAPPEL	1	1	1		
23	97095-06020	BOLT BOULON	3	3	3		
24	92995-06600	WASHER RONDELLE	3	3	3		
25	68T-15762-00	SEAL, RUBBER 2 JOINT CAOUTCHOUC 2	1	1	1		
26	68T-15774-10	STAY 4 SUPPORT 4	1	1	1		
27	90109-06M86	BOLT BOULON	2	2	2		



GENERATRICE

C2




 60N1300-D120

FIG. 12 ELECTRICAL 1

PARTIE ELECTRIQUE 1

REF. NO.	PART NO. N° PIECES	DESCRIPTION DESCRIPTION	60N2	60P2	60R2		REMARKS REMARQUES
1	68R-85540-00	C.D.I. UNIT ASSY BLOC C.D.I.	1				
	69F-85540-00	C.D.I. UNIT ASSY BLOC C.D.I.		1			
	68T-85540-00	C.D.I. UNIT ASSY BLOC C.D.I.			1		
2	68T-82522-00	CLAMP, COUPLER BRIDE, DE CONNECTEUR	1	1	1		
3	97780-40512	SCREW, TAPPING VIS, TETE BOMBEE	2	2	2		
4	97095-06020	BOLT BOULON	2	2	2		
5	92995-06600	WASHER RONDELLE	2	2	2		
6	97095-06012	BOLT BOULON	1	1	1		
7	92995-06600	WASHER RONDELLE	1	1	1		
8	680-85570-01	IGNITION COIL ASSY BOBINE D'ALLUMAGE (ENS.)	1	1	1		
9	90480-25161	GROMMET PASSE-FIL	2	2	2		
10	97095-06025	BOLT BOULON	2	2	2		
11	92995-06600	WASHER RONDELLE	2	2	2		
12	6E3-82370-21	PLUG CAP ASSY ANTIPARASITE	2	2	2		
13	68T-81960-00	RECTIFIER & REGULATOR ASSY REDRESSEUR REGULATEUR CPLT	1	1	1		
14	97095-06012	BOLT BOULON	1	1	1		
15	92995-06600	WASHER RONDELLE	1	1	1		
16	90465-11M10	CLAMP BRIDE	1	1	1		
17	67F-82504-00	OIL PRESSURE SWITCH ASSY CONTACTEUR DE PRESSION D'HUILE	1	1	1		
18	68T-82127-10	WIRE, LEAD 2 FIL 2	1	1	1		
19	68T-85410-00	EMERGENCY SIGNAL LIGHT ASSY FEU DE DETRESSE	1	1	1		
20	68T-81822-00-94	BRACKET, STARTING MOTOR SUPPORT, DEMARREUR ELECTRIQUE	1	1	1		
21	90119-08046	BOLT, WITH WASHER BOULON, AVEC RONDELLE	2	2	2		
22	90119-08020	BOLT, WITH WASHER BOULON, AVEC RONDELLE	1	1	1		
23	90465-08M99	CLAMP BRIDE	1	1	1		
24	97095-06012	BOLT BOULON	1	1	1		
25	92995-06600	WASHER RONDELLE	1	1	1		



C5

PARTIE ELECTRIQUE 2

[illegible]

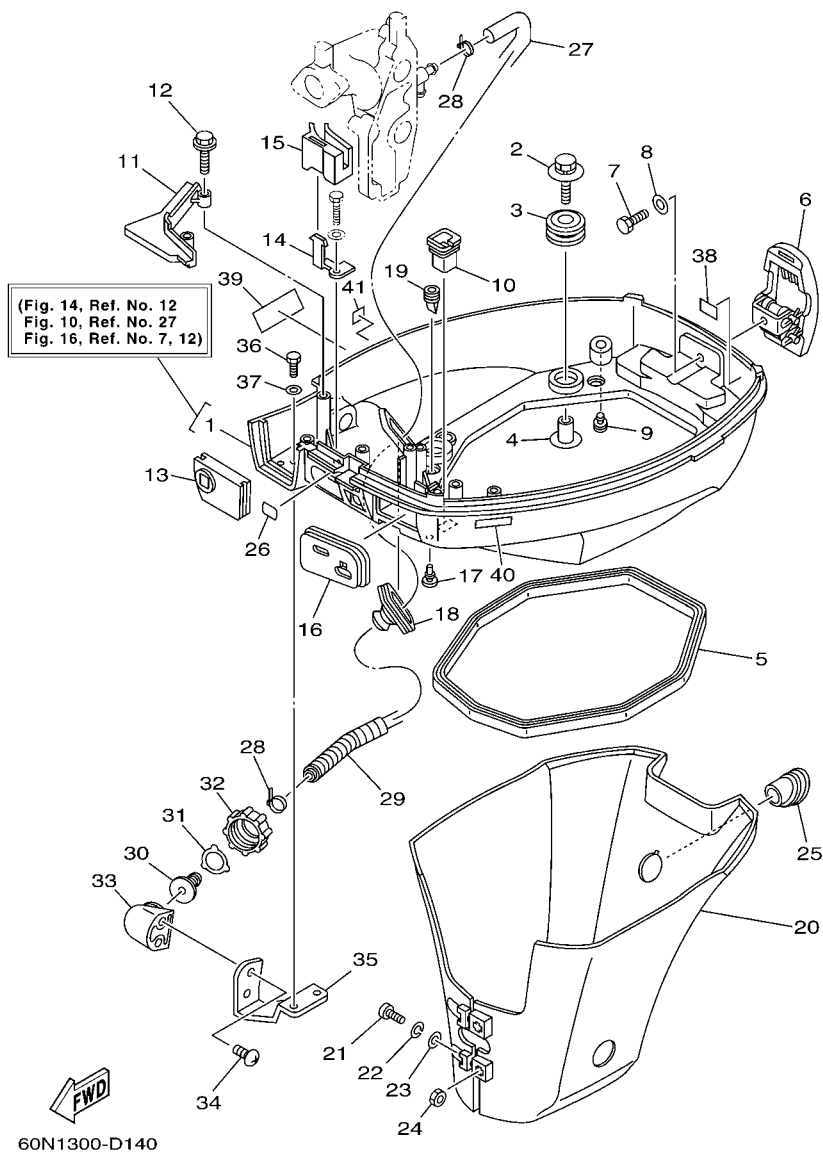


FIG. 14 BOTTOM COWLING

CAPOT INFERIEUR

REF. NO.	PART NO. N° PIECES	DESCRIPTION DESCRIPTION	60N2	60P2	60R2	REMARKS REMARQUES
1	60R-G2710-00-4D	BOTTOM COWLING ASSY ENS. EMBASE	1	1	1	WITH TAPPING BOLT WITH TAPPING BOLT
2	68F-85119-00	BOLT BOULON	4	4	4	
3	90480-21M82	GROMMET PASSE-FIL	4	4	4	
4	90387-06053	COLLAR COLLERETTE	4	4	4	
5	68T-42716-10	RUBBER, SEAL 1 JOINT EN CAOUTCHOUC 1	1	1	1	
6	68T-42801-00	COWLING CLAMP COMP. BRIDE DE CAPOT COMP.	1	1	1	
7	97095-06012	BOLT BOULON	1	1	1	
8	92995-06600	WASHER RONDELLE	1	1	1	
9	6H3-44391-01	NIPPLE, HOSE RACCORD D'ESSENCE	1	1	1	
10	682-42727-00	GROMMET PASSE-FIL	1	1	1	
11	68T-42738-00-4D	PLATE, FITTING ETRIER	1	1	1	
12	90109-06M81	BOLT BOULON	2	2	2	
13	68T-42725-00	GROMMET PASSE-FIL	1	1	1	
14	68T-26393-00	HOLDER SUPPORT	1	1	1	
15	68T-26367-00	PROTECTOR PROTECTEUR	1	1	1	
16	60R-G2724-00	GROMMET PASSE-FIL	1	1	1	FLUSHING KIT FLUSHING KIT
17	90480-06M19	GROMMET PASSE-FIL	1	1	1	
18	688-42726-10	GROMMET PASSE-FIL	1	1	1	
19	60S-G2717-00	RUBBER, SEAL 2 JOINT EN CAOUTCHOUC 2	2	2	2	
20	60R-G2741-00	APRON CAPOT LATERAL	1	1	1	
21	97885-06030	SCREW, PAN HEAD VIS, A ENCOCHE	2	2	2	
22	92995-06100	WASHER, SPRING RONDELLE, GROWER	2	2	2	
23	92995-06600	WASHER RONDELLE	2	2	2	
24	95380-06600	NUT, HEXAGON ECROU	2	2	2	
25	68T-42717-00	RUBBER, SEAL 2 JOINT EN CAOUTCHOUC 2	1	1	1	
26	60R-H4342-00	SEAT, EMBLEM SIEGE, EMBLEME	1	1	1	FLUSHING KIT FLUSHING KIT
27	60S-E2481-00	PIPE 1 DURITE 1	1	1	1	

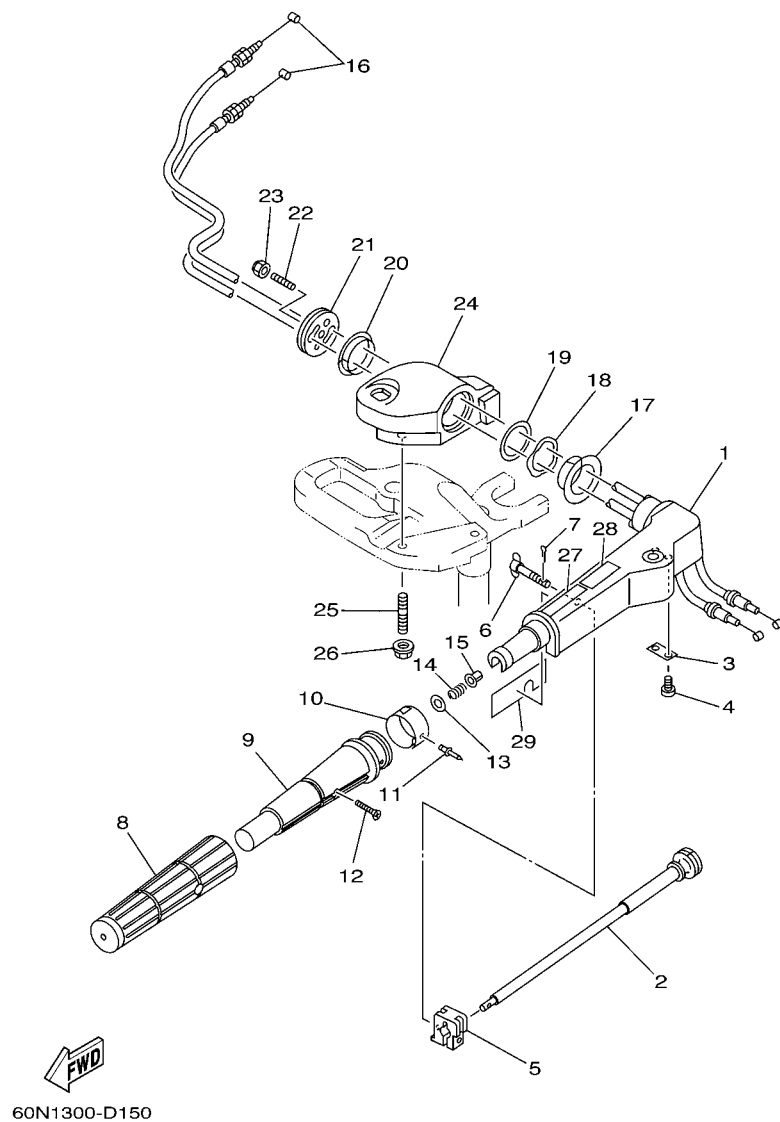


FIG. 15 STEERING

REF. NO.	PART NO. N° PIECES	DESCRIPTION	60N2	60P2	60R2			REMARKS REMARQUES
1	60R-G2111-00-4D	HANDLE, STEERING POIGNEE	1	1	1			
2	6G1-42138-01	LEVER, THROTTLE LEVIER, ACCELERATEUR	1	1	1			
3	68D-G2159-00	STAY SUPPORT	1	1	1			
4	97885-05012	SCREW, PAN HEAD VIS, A ENCOCHE	2	2	2			
5	6G1-42126-00	FRICTION, STEERING HANDLE GRIP CUVETTE, POIGNEE DE DIRECTION	1	1	1			
6	6G1-42125-01	BOLT, FRICTION ADJUSTING BOULON	1	1	1			
7	91490-16010	PIN, COTTER GOUPILLE	1	1	1			
8	68D-G2177-10	RUBBER, HANDLE CAOUTCHOUC, POIGNEE	1	1	1			
9	68D-G2119-00	GRIP, STEERING HANDLE POIGNEE, BARRE FRANCHE	1	1	1			
10	60N-G2137-00	INDICATOR, THROTTLE INDICATEUR, ACCELERATION	1					
	60P-G2137-00	INDICATOR, THROTTLE INDICATEUR, ACCELERATION		1				
	60R-G2137-00	INDICATOR, THROTTLE INDICATEUR, ACCELERATION			1			
11	90269-02M09	RIVET RIVET	1	1	1			
12	90149-05M13	SCREW VIS	1	1	1			
13	92903-10600	WASHER, PLATE RONDELLE, PLATE	1	1	1			
14	90501-23800	SPRING, COMPRESSION RESSORT, COMPRESSION	1	1	1			
15	90386-08032	BUSH DOUILLE	1	1	1			
16	68T-26301-01	THROTTLE CABLE ASSY CABLE D'ACCELERATEUR	2	2	2			
17	90386-34M97	BUSH DOUILLE	1	1	1			
18	90206-36M21	WASHER, WAVE RONDELLE, ONDULEE	1	1	1			
19	90202-36M55	WASHER, PLATE RONDELLE, PLATE	1	1	1			
20	90386-33M96	BUSH DOUILLE	1	1	1			
21	68T-42131-01	COVER, HANDLE STEERING COUVERCLE	1	1	1			
22	90116-08015	BOLT, STUD GOUJON	1	1	1			
23	90185-08057	NUT, SELF-LOCKING ECROU,AUTO-BLOQUANT	1	1	1			
24	60R-G2121-00-4D	BRACKET SUPPORT	1	1	1			
25	90116-10019	BOLT, STUD GOUJON	2	2	2			

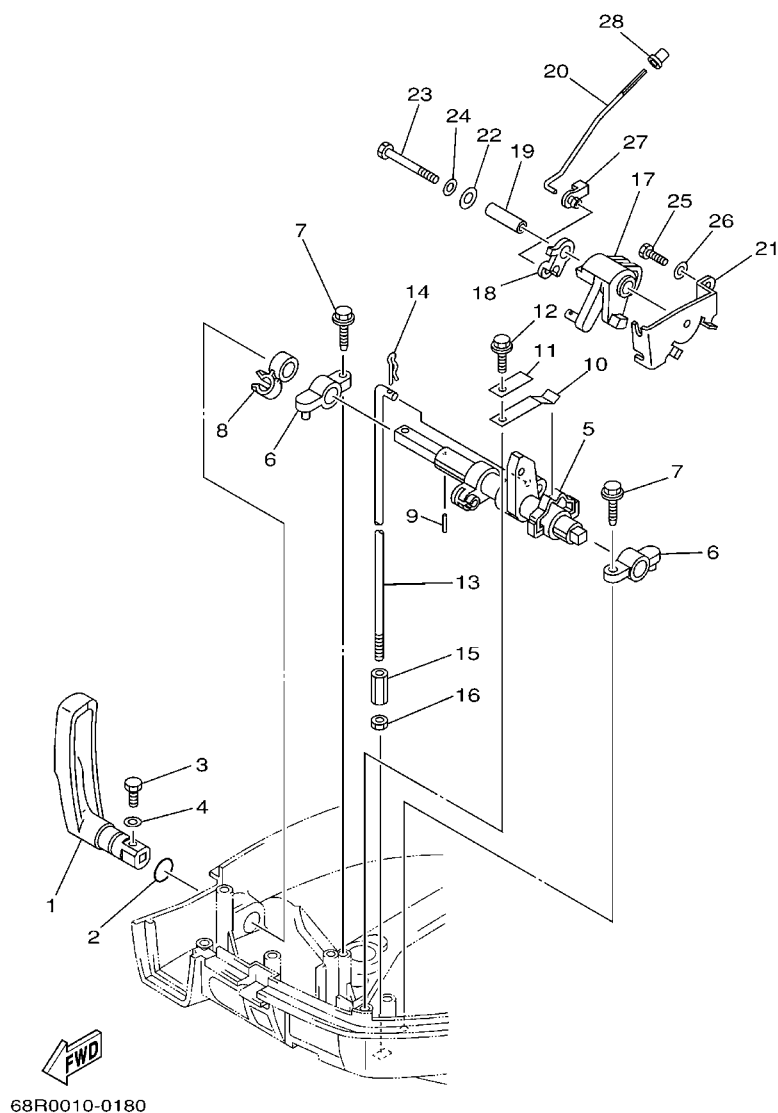


FIG. 16 CONTROL

COMMANDE

REF. NO.	PART NO. N° PIECES	DESCRIPTION DESCRIPTION	60N2	60P2	60R2	REMARKS REMARQUES
1	60R-G4111-00	HANDLE, GEAR SHIFT POIGNEE, LEVIER D'EMBRAYAGE	1	1	1	
2	93210-12327	O-RING JOINT TORIQUE	1	1	1	
3	97095-05016	BOLT BOULON	1	1	1	
4	92995-05600	WASHER RONDELLE	1	1	1	
5	68T-44121-01	LEVER, SHIFT ROD LEVIER, TIGE D'INVERSION	1	1	1	
6	6G1-41662-01-94	BRACKET SUPPORT	2	2	2	
7	90109-06M81	BOLT BOULON	2	2	2	
8	90464-10M60	CLAMP BRIDE	1	1	1	
9	91690-30014	PIN, SPRING AGRAFFE	1	1	1	
10	65W-44116-00	SPRING RESSORT	1	1	1	
11	66R-44114-00	STOPPER PLAQUETTE	1	1	1	
12	90109-06M86	BOLT BOULON	1	1	1	
13	60R-G4143-00	ROD, SHIFT TIGE D'EMBRAYAGE	1	1	1	S (17.1") S (17.1")
	60R-G4143-10	ROD, SHIFT TIGE D'EMBRAYAGE	1	1	1	L (22.1") L (22.1")
14	90468-18001	CLIP JONC	1	1	1	
15	90170-06015	NUT ECROU	1	1	1	
16	95380-06700	NUT ECROU	1	1	1	
17	68T-41638-00	PULLEY POULIE	1	1	1	
18	68R-41283-00	LEVER, FREE ACCEL. LEVIER	1	1		
	68T-41283-00	LEVER, FREE ACCEL. LEVIER			1	
19	90387-06M59	COLLAR COLLERETTE	1	1	1	
20	68T-41211-00	LINK, ACCEL.			1	
	6AU-41211-00	LINK, ACCEL.	1			
	69F-41211-00	LINK, ACCEL.		1		
21	68T-14497-00	STAY, THROTTLE WIRE SUPPORT DE BOISSEAU	1	1	1	
22	90201-06M62	WASHER, PLATE RONDELLE, PLATE	1	1	1	
23	97095-06045	BOLT BOULON	1	1	1	
24	92995-06600	WASHER RONDELLE	1	1	1	

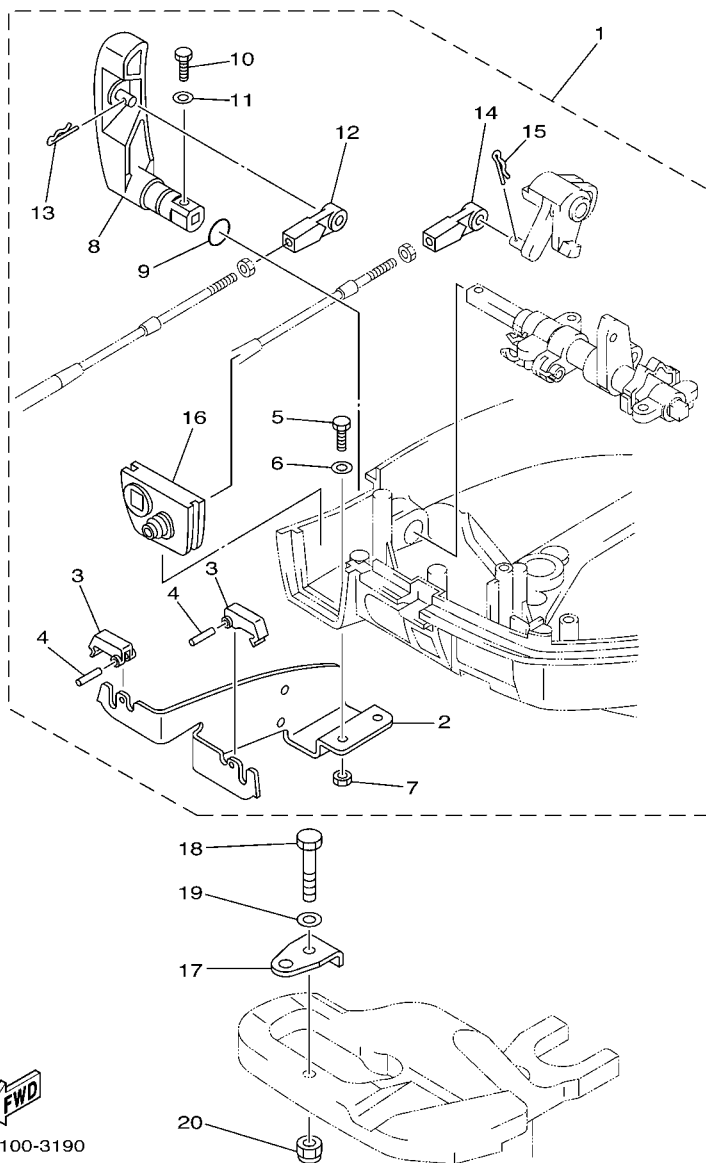


FIG. 17 REMO CON ATTACHMENT COMMANDE A DISTANCE

REF. NO.	PART NO. N° PIECES	DESCRIPTION DESCRIPTION	60N2	60P2	60R2		REMARKS REMARQUES
1	60R-G8501-00	REMOTE CONT. ATTACHMENT ASSY. COMMANDE A DISTANCE (KIT)	1	1	1		AP AP
2	68T-48531-00	.BRACKET, REMOTE CONTROL 1 .ETRIER 1, COMMANDE A DISTANCE	1	1	1		
3	682-48538-50	.CLAMP, CABLE 1 .COLLIER	2	2	2		
4	91690-30012	.PIN, SPRING .AGRAFFE	2	2	2		
5	97095-06012	.BOLT .BOULON	2	2	2		
6	92995-06600	.WASHER .RONDELLE	2	2	2		
7	95380-06600	.NUT, HEXAGON .ECROU	2	2	2		
8	60R-G4111-10	.HANDLE, GEAR SHIFT .POIGNEE, LEVIER D'EMBRAYAGE	1	1	1		
9	93210-12327	.O-RING .JOINT TORIQUE	1	1	1		
10	97095-05016	.BOLT .BOULON	1	1	1		
11	92995-05600	.WASHER .RONDELLE	1	1	1		
12	663-48344-00	.CABLE END, REMOTE CONTROL .CHAPE CABLE	1	1	1		
13	90468-18008	.CLIP .JONC	1	1	1		
14	663-48344-00	.CABLE END, REMOTE CONTROL .CHAPE CABLE	1	1	1		
15	90468-18008	.CLIP .JONC	1	1	1		
16	68T-42725-10	.GROMMET .PASSE-FIL	1	1	1		
17	63V-48511-01	HOOK, STEERING ATTACHE, DIRECTION			1		AP AP
18	97075-08035	BOLT BOULON			1		AP AP
19	92995-08600	WASHER RONDELLE			1		AP AP
20	90185-08057	NUT, SELF-LOCKING ECROU,AUTO-BLOQUANT			1		AP AP



SUPPORT 1

REF. NO.	PART NO. N° PIECES	DESCRIPTION DESCRIPTION	60N2	60P2	60R2			REMARKS REMARQUES
1	60R-G3111-00-4D	BRACKET, CLAMP 1 PRESSE 1	1	1	1			
2	60R-G3112-00-4D	BRACKET, CLAMP 2 PRESSE 2	1	1	1			
3	6L8-G3118-01	HANDLE, TRANSOM CLAMP POIGNEE DE VIS DE PRESSE	2	2	2			
4	90243-04M01	PIN GOUPILLE	2	2	2			
5	6E7-43116-00	SCREW, TRANSOM CLAMP VIS DE PRESSE	2	2	2			
6	648-43114-01	PAD, TRANSOM CLAMP RONDELLE D'APPUI	2	2	2			
7	63V-43131-10	BOLT, CLAMP BRACKET (L:283MM) BOULON, PRESSE (L:283MM)	1	1	1			FOR RIDE GUIDE FOR RIDE GUIDE
8	90386-22MA4	BUSH DOUILLE	2	2	2			
9	66R-43113-00	PLATE, CLAMP BRACKET PLAQUETTE, PRESSE	1	1	1			
10	90185-22043	NUT, SELF-LOCKING ECROU,AUTO-BLOQUANT	2	2	2			
11	90387-06M13	COLLAR COLLERETTE	1	1	1			
12	90101-06M18	BOLT BOULON	1	1	1			
13	92990-06600	WASHER, PLATE RONDELLE, PLATE	1	1	1			
14	95380-06700	NUT ECROU	1	1	1			
15	6L2-43160-01	TILT ROD ASSY BROCHE D'INCLINAISON (ENS.)	1	1	1			
16	689-43165-00	.PLATE, TILT LOCK .TAQUET, BROCHE INCLINAISON	1	1	1			
17	91690-30008	.PIN, SPRING .AGRAFFE	1	1	1			
18	90502-10M07	SPRING, CONICAL RESSORT, CONIQUE	1	1	1			
19	60R-G3311-00-4D	BRACKET, SWIVEL 1 SUPPORT, PIVOT 1	1	1	1			S (17.1") S (17.1")
	60R-G3311-10-4D	BRACKET, SWIVEL 1 SUPPORT, PIVOT 1	1	1	1			L (22.1") L (22.1")
20	60R-G3631-00	LEVER, TILT LEVIER, INCLINAISON	1	1	1			
21	60R-G3616-00	ROD, TILT LOCK TIGE	1	1	1			
22	68T-43646-00	SHAFT, LEVER AXE, LEIVER	1	1	1			
23	68T-43641-00	LEVER, TILT LEVIER, INCLINAISON	1	1	1			
24	68T-43617-00	ROD, TILT LOCK TIGE	1	1	1			
25	99080-05600	CIRCLIP CIRCLIP	2	2	2			
26	68T-43350-00	RECEIVER ASSY RECEIVER ASSY	1	1	1			

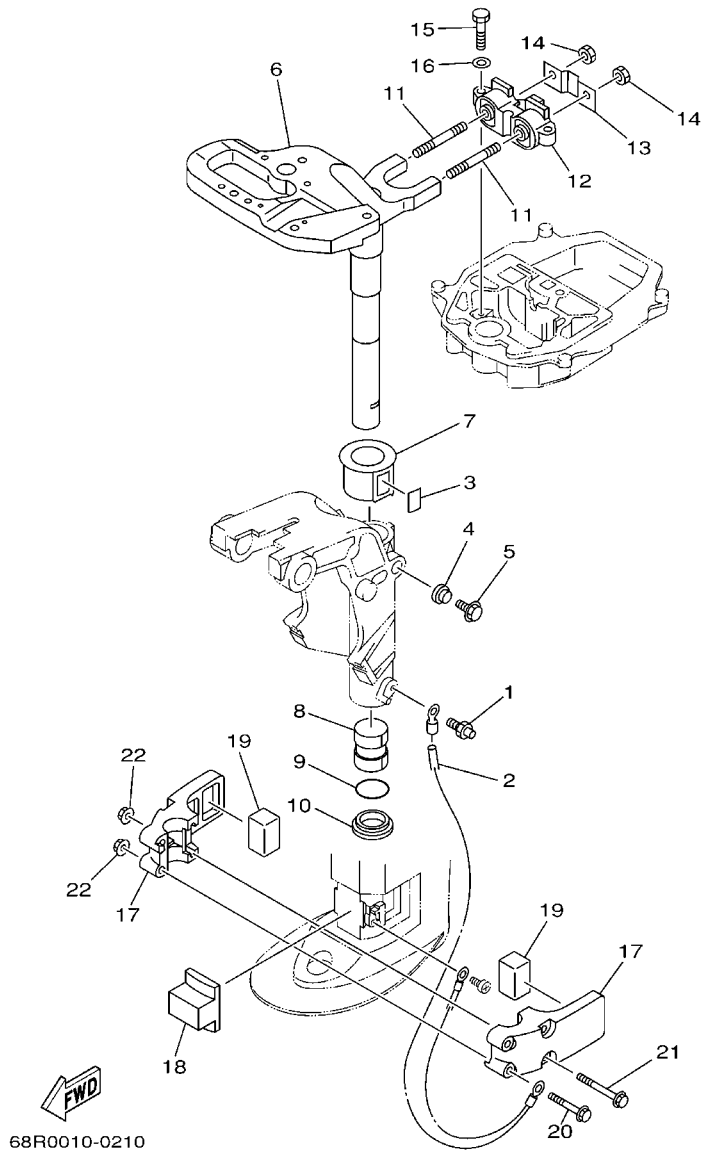


FIG. 19 BRACKET 2

SUPPORT 2

REF. NO.	PART NO. N° PIECES	DESCRIPTION DESCRIPTION	60N2	60P2	60R2	REMARKS REMARQUES
1	93700-06M03	NIPPLE, GREASE PION	1	1	1	
2	68T-82127-00	WIRE, LEAD 2 FIL 2	1	1	1	
3	63V-42528-00	PLATE, FRICTION PLAQUE, FRICTION	1	1	1	
4	689-43373-01	SEAL, DAMPER JOINT	1	1	1	
5	90105-06M07	BOLT, FLANGE BOULON	1	1	1	
6	60R-G2511-00-4D	BRACKET, STEERING CADRE, DIRECTION	1	1	1	S (17.1") S (17.1") L (22.1") L (22.1")
	60R-G2511-10-4D	BRACKET, STEERING CADRE, DIRECTION	1	1	1	
7	63V-42537-00	BUSHING, PIVOT SHAFT COUSSINET	1	1	1	
8	90386-30048	BUSH DOUILLE	1	1	1	
9	93210-29M94	O-RING JOINT TORIQUE	1	1	1	
10	90386-30M60	BUSH DOUILLE	1	1	1	
11	90116-08M54	BOLT, STUD GOUJON	2	2	2	
12	68T-44517-00-94	MOUNT RUBBER SILENT-BLOC	1	1	1	
13	68T-44526-00	PLATE PLAQUE	1	1	1	
14	95380-08600	NUT ECROU	2	2	2	
15	97075-06025	BOLT BOULON	2	2	2	
16	92995-06600	WASHER RONDELLE	2	2	2	
17	68T-44551-00-4D	HOUSING, LOWER MOUNT RUBBER BOITIER, SILENT-BLOC INFÉRIEUR	2	2	2	
18	60R-G4557-00	MOUNT DAMPER, LOWER FRONT SILENT-BLOC, INFÉRIEUR AVANT	1	1	1	
19	60R-G4555-00	MOUNT DAMPER, LOWER SIDE SILENT-BLOC, INFÉRIEUR LATÉRAL	2	2	2	
20	90119-06012	BOLT, WITH WASHER BOULON, AVEC RONDELLE	2	2	2	
21	90119-06013	BOLT, WITH WASHER BOULON, AVEC RONDELLE	2	2	2	
22	90179-06M28	NUT ECROU	4	4	4	

**E2**

FOURREAU

[illegible]

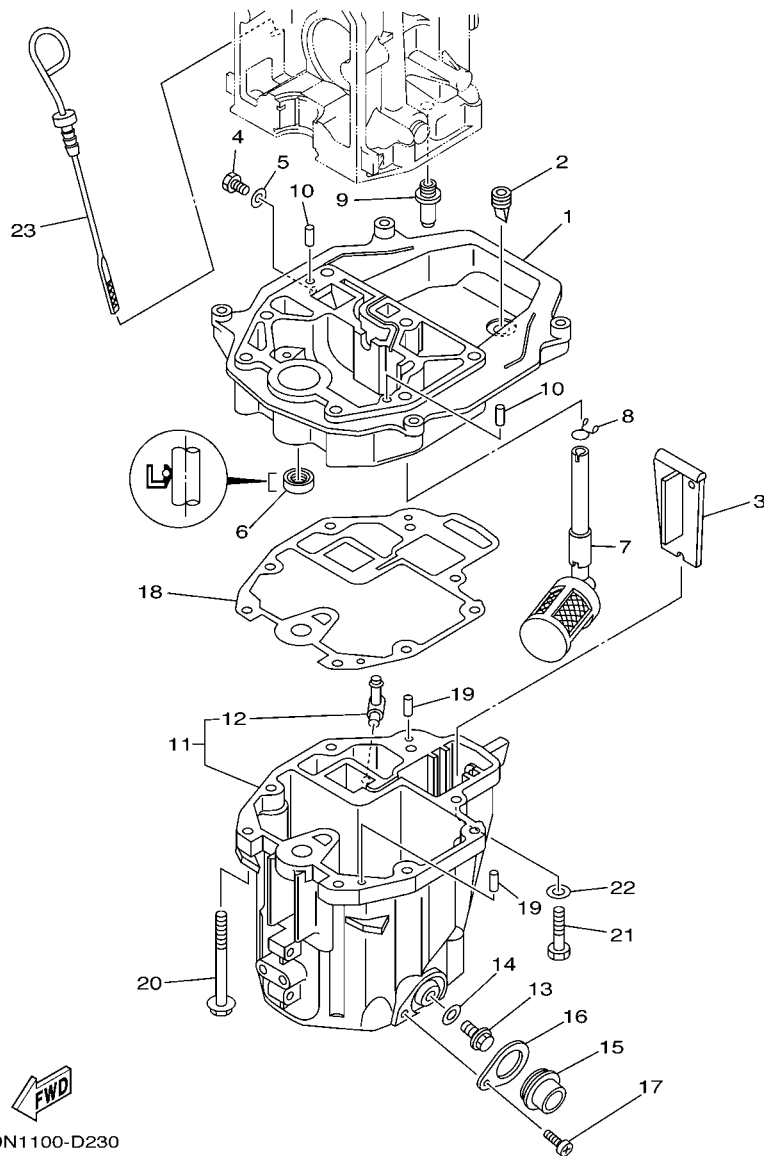


FIG. 21 OIL PAN

VENTILATEUR D'HUILE

REF. NO.	PART NO. N° PIECES	DESCRIPTION DESCRIPTION	60N2	60P2	60R2		REMARKS REMARQUES
1	60R-G1137-00-94	GUIDE, EXHAUST COLLECTEUR D'ECHAPPEMENT	1	1	1		
2	60S-G2717-00	RUBBER, SEAL 2 JOINT EN CAOUTCHOUC 2	1	1	1		
3	60R-G5181-00	PLATE PLAQUETTE	1	1	1		
4	97095-08014	BOLT BOULON	1	1	1		
5	90430-08800	GASKET JOINT	1	1	1		
6	93101-12M70	OIL SEAL JOINT SPY	1	1	1		
7	68T-13421-01	STRAINER 2 FILTRE 2	1	1	1		
8	90467-11M08	CLIP JONC	1	1	1		
9	6G8-11575-00	RELIEF VALVE ASSY SOUPAPE DE RENTREE D'AIR	1	1	1		
10	93606-19M23	PIN, DOWEL GOUPILLE	2	2	2		
11	60R-E5311-00-5B	OIL PAN VENTILATEUR D'HUILE	1	1	1		
12	6H1-11372-00	.NIPPLE, HOSE .RACCORD, TUYAU	1	1	1		
13	90340-10M10	PLUG, STRAIGHT SCREW PLOT, FILETE DROIT	1	1	1		
14	90430-10M11	GASKET JOINT	1	1	1		
15	60R-E5316-00	DAMPER, ENGINE MOUNT 1 AMORTISSEUR DE SUPPORT	1	1	1		
16	68T-15317-00	SPACER, ENGINE MOUNT ENTRETOISE DE SUPPORT	1	1	1		
17	97885-05008	SCREW, PAN HEAD VIS, A ENCOCHE	1	1	1		
18	68T-13475-00	GASKET JOINT	1	1	1		
19	93604-12M07	PIN, DOWEL CLAVETTE	2	2	2		
20	90119-08005	BOLT, WITH WASHER BOULON, AVEC RONDELLE	6	6	6		
21	97075-08030	BOLT BOULON	2	2	2		
22	92995-08600	WASHER RONDELLE	2	2	2		
23	68T-15362-00	PLUG, OIL LEVEL PLOT, NIVEAU D'HUILE	1	1	1		

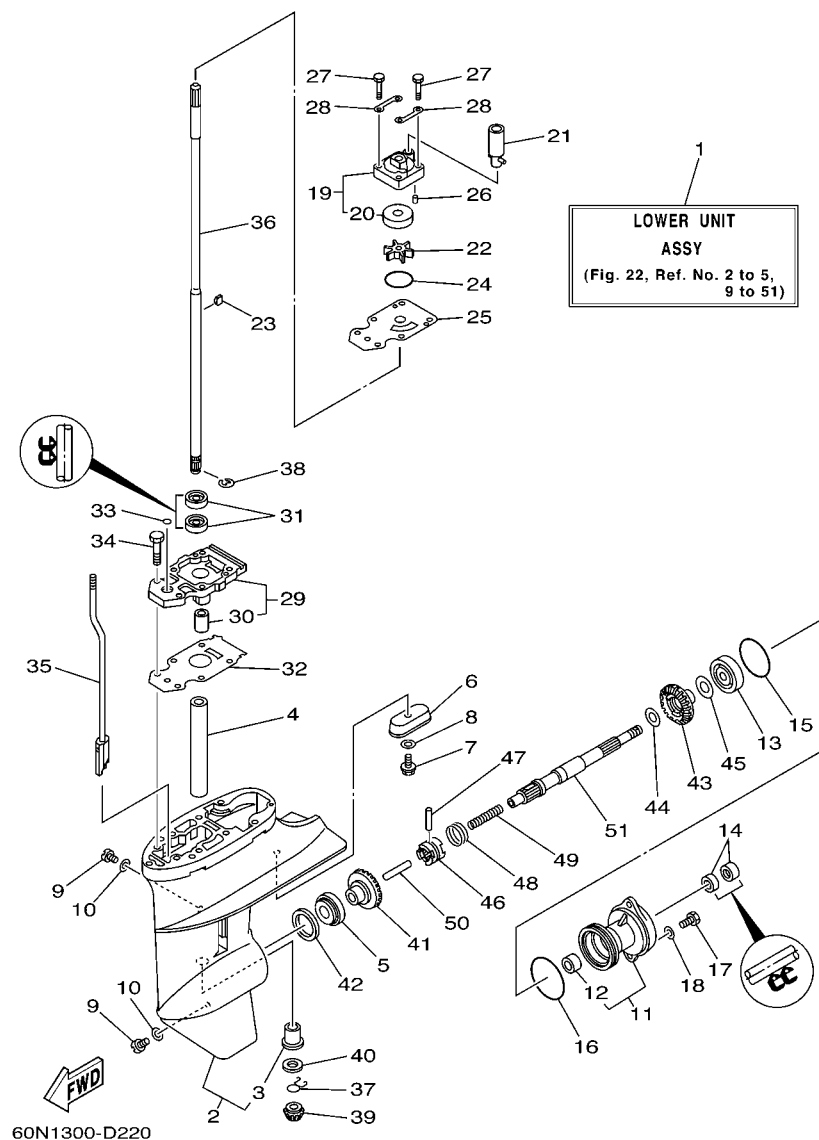


FIG. 22 LOWER CASING & DRIVE 1

BOITIER D'HELICE TRANSMISSION1

REF. NO.	PART NO. N° PIECES	DESCRIPTION DESCRIPTION	60N2	60P2	60R2	REMARKS REMARQUES
1	60R-G5300-00-4D	LOWER UNIT ASSY UNITE INFÉRIEURE (ENS.)	1	1	1	S (17.1") S (17.1")
	60R-G5300-10-4D	LOWER UNIT ASSY UNITE INFÉRIEURE (ENS.)	1	1	1	L (22.1") L (22.1")
2	60R-G5311-00-4D	CASING, LOWER BOITIER D'HELICE	1	1	1	
3	6G1-45317-09	.BUSHING, DRIVE SHAFT .DOUILLE, ARBRE MOTEUR	1	1	1	
4	90387-14M49	COLLAR COLLERETTE	1	1	1	
5	93306-004YH	BEARING ROULEMENT	1	1	1	
6	68T-45251-00	ANODE ANODE	1	1	1	
7	95895-06016	BOLT, FLANGE BOULON	1	1	1	
8	92990-06300	WASHER, INTERNAL TOOTH RONDELLE, DENTURE INTERNE	1	1	1	
9	90340-08002	PLUG, STRAIGHT SCREW PLOT, FILET DROIT	2	2	2	
10	90430-08020	GASKET JOINT	2	2	2	
11	6N0-G5361-00-4D	CAP, LOWER CASING COUVERCLE, BOITIER D'HELICE	1	1	1	
12	6G1-45362-09	.BUSHING .COUSSINET	1	1	1	
13	93306-004YH	BEARING ROULEMENT	1	1	1	
14	93101-15074	OIL SEAL JOINT SPY	2	2	2	
15	93210-49046	O-RING JOINT TORIQUE	1	1	1	
16	93210-53M08	O-RING JOINT TORIQUE	1	1	1	
17	97095-06016	BOLT BOULON	2	2	2	
18	92995-06600	WASHER RONDELLE	2	2	2	
19	63V-44301-00	WATER PUMP HOUSING COMP. CARTER, POMPE A EAU (ENS.)	1	1	1	
20	63V-44322-00	.INSERT, CARTRIDGE .CUVETTE	1	1	1	
21	68T-44366-00	DAMPER, WATER SEAL JOINT, TUBE D'EAU	1	1	1	
22	68T-44352-00	IMPELLER TURBINE	1	1	1	
23	664-44338-00	KEY, WOODRUFF CLAVETTE, VOLANT	1	1	1	
24	93210-44398	O-RING JOINT TORIQUE	1	1	1	
25	68T-44323-00	OUTER PLATE, CARTRIDGE PLAQUE EXTERIEURE	1	1	1	
26	93604-12M07	PIN, DOWEL CLAVETTE	2	2	2	

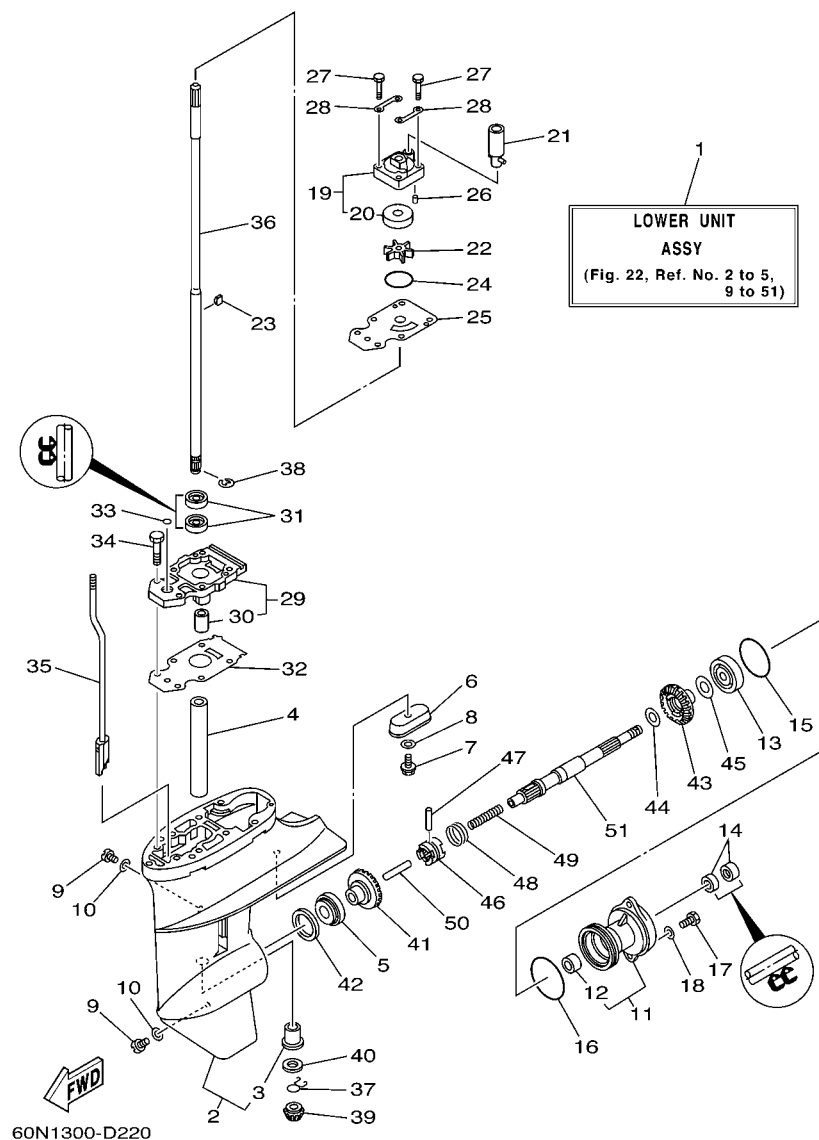


FIG. 22 LOWER CASING & DRIVE 1 BOITIER D'HELICE TRANSMISSION1

REF. NO.	PART NO. N° PIECES	DESCRIPTION DESCRIPTION	60N2	60P2	60R2		REMARKS REMARQUES
27	97080-08045	BOLT BOULON	4	4	4		
28	63V-44328-00	PLATE PLAQUETTE	2	2	2		
29	60R-G5331-00-5B	HOUSING, BEARING FLASQUE, ROULEMENT	1	1	1		
30	6G1-45316-09	.BUSHING, DRIVE SHAFT .DOUILLE, ARBRE MOTEUR	1	1	1		
31	93101-11M23	OIL SEAL JOINT SPY	2	2	2		
32	68T-45315-A0	PACKING, LOWER CASING JOINT, BOITIER D'HELICE	1	1	1		
33	93210-06ME6	O-RING JOINT TORIQUE	1	1	1		
34	97080-08025	BOLT BOULON	2	2	2		
35	60R-G4150-00	SHIFT CAM ASSY CAME D'INVERSION	1	1	1		
36	68T-45511-00	SHAFT, DRIVE ARBRE, MOTEUR	1	1	1		S (17.1")
68T-45511-10	SHAFT, DRIVE ARBRE, MOTEUR		1	1	1		S (17.1") L (22.1") L (22.1")
37	90467-09M05	CLIP JONC	1	1	1		
38	99001-07600	CIRCLIP CIRCLIP	1	1	1		
39	6N0-G5551-A0	PINION (13T) PIGNON D'ATTAQUE (13D)	1	1	1		
40	6G1-45533-00	SHIM (T:1.90MM) CALE (T:1.90MM)	1	1	1		UR
6G1-45533-10	SHIM (T:2.00MM) CALE (T:2.00MM)		1	1	1		UR
6G1-45533-20	SHIM (T:2.10MM) CALE (T:2.10MM)		1	1	1		UR
6G1-45533-30	SHIM (T:2.20MM) CALE (T:2.20MM)		1	1	1		UR
41	60R-G5560-00	GEAR 1 (27T) PIGNON 1 (27T)	1	1	1		
42	664-45587-01	SHIM (T:0.10MM) CALE (T:0.10MM)	1	1	1		UR
664-45587-10	SHIM (T:0.12MM) CALE (T:0.12MM)		1	1	1		UR
664-45587-20	SHIM (T:0.15MM) CALE (T:0.15MM)		1	1	1		UR
664-45587-30	SHIM (T:0.18MM) CALE (T:0.18MM)		1	1	1		UR
664-45587-40	SHIM (T:0.30MM) CALE (T:0.30MM)		1	1	1		UR
664-45587-50	SHIM (T:0.40MM) CALE (T:0.40MM)		1	1	1		UR
664-45587-60	SHIM (T:0.50MM) CALE (T:0.50MM)		1	1	1		UR
43	60R-G5571-00	GEAR 2 (27T) PIGNON 2 (27T)	1	1	1		

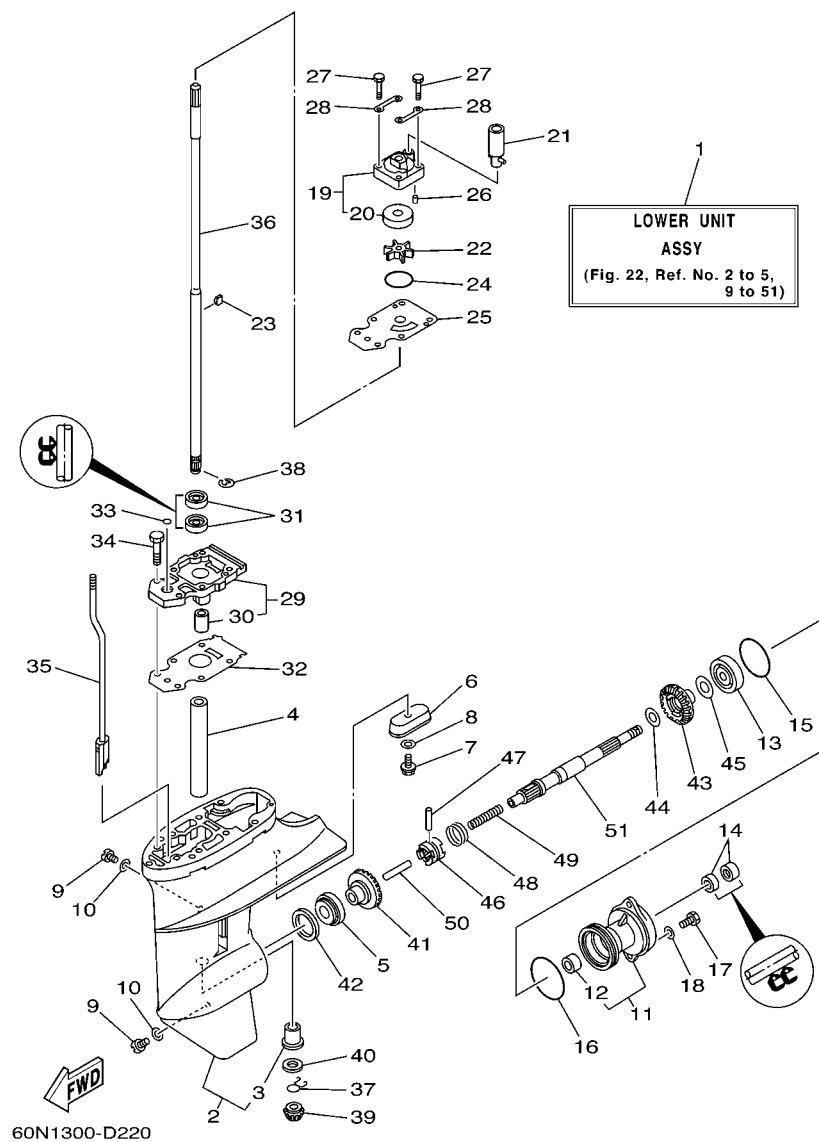


FIG. 22 LOWER CASING & DRIVE 1

BOITIER D'HELICE TRANSMISSION1

[illegible]

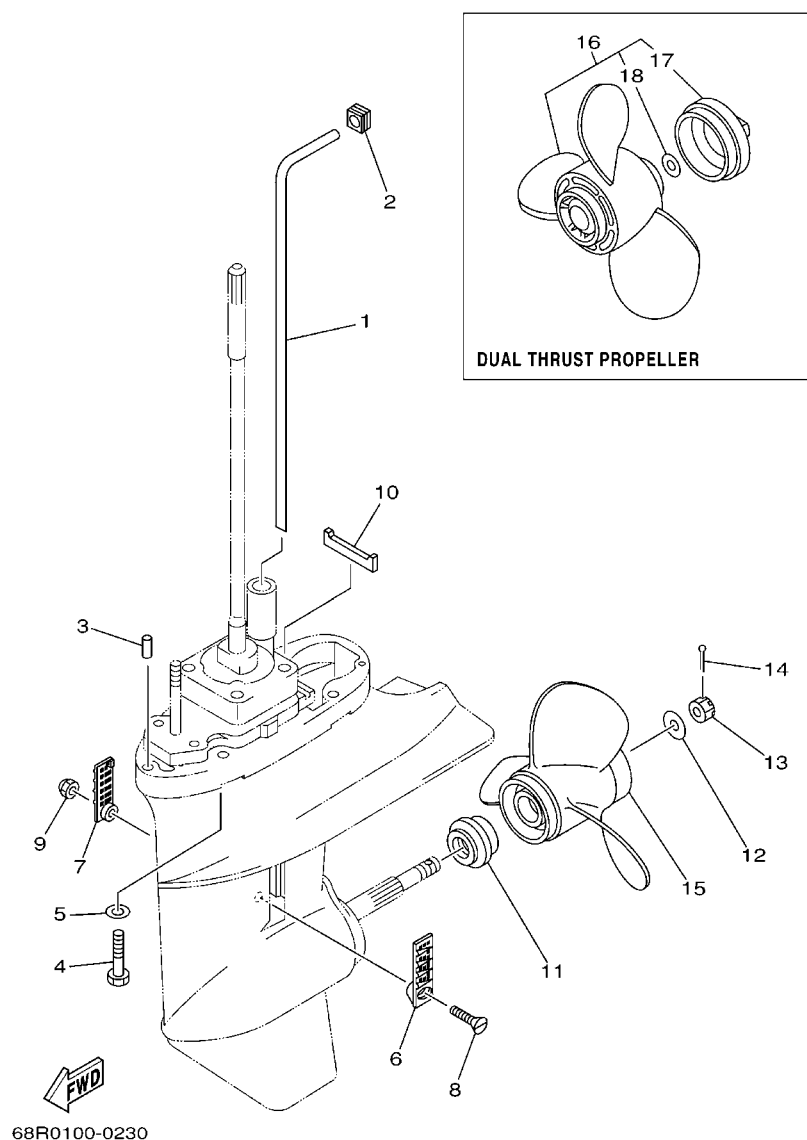
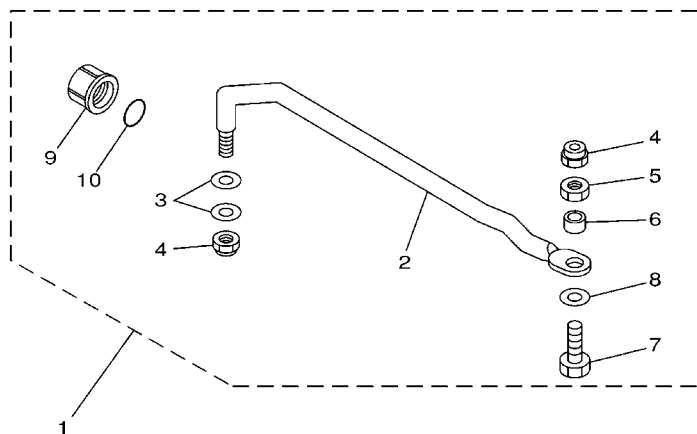


FIG. 23 LOWER CASING & DRIVE 2 BOITIER D'HELICE TRANSMISSION2

REF. NO.	PART NO. N° PIECES	DESCRIPTION DESCRIPTION	60N2	60P2	60R2	REMARKS REMARQUES
1	68T-44361-00	TUBE, WATER TUBE D'EAU	1	1	1	S (17.1") S (17.1")
	68T-44361-10	TUBE, WATER TUBE D'EAU	1	1	1	L (22.1") L (22.1")
2	63V-44365-10	DAMPER, WATER SEAL JOINT, TUBE D'EAU	1	1	1	
3	93604-12M07	PIN, DOWEL CLAVETTE	2	2	2	
4	97075-08035	BOLT BOULON	4	4	4	
5	92995-08600	WASHER RONDELLE	4	4	4	
6	6G1-45214-00	COVER, WATER INLET 1 GRILLE, ENTREE D'EAU 1	1	1	1	
7	6G1-45215-00	COVER, WATER INLET 2 GRILLE, ENTREE D'EAU 2	1	1	1	
8	90152-05M03	SCREW, COUNTERSUNK VIS, TETE NOYEE	1	1	1	
9	90185-05002	NUT, SELF-LOCKING ECROU, AUTO-BLOQUANT	1	1	1	
10	63V-45375-00	DAMPER, SEAL BOURRELET, CAOUTCHOUC	1	1	1	
11	6N0-G5987-10	SPACER ENTRETOISE	1	1	1	
12	90201-10M01	WASHER, PLATE RONDELLE, PLATE	1	1	1	
13	90171-10M01	NUT, CASTLE ECROU, CRENELE	1	1	1	
14	91490-30020	PIN, COTTER GOUPILLE	1	1	1	
15	6G1-45941-00-EL	PROPELLER (3X8-1/2"X8-1/2"-N) HELICE (3X8-1/2"X8-1/2"-N)	1	1	1	UR
	6G1-45943-00-EL	PROPELLER (3X8-1/2"X7-1/2"-N) HELICE (3X8-1/2"X7-1/2"-N)	1	1	1	UR
	6G1-45947-00-EL	PROPELLER (3X8-1/2"X6-1/2"-N) HELICE (3X8-1/2"X6-1/2"-N)	1	1	1	UR
	6G1-45952-00-EL	PROPELLER (3X8-1/2"X8"-N) HELICE (3X8-1/2"X8"-N)	1	1	1	UR
16	6G1-W4591-01-EL	PROPELLER (3X9"X7"-N) HELICE (3X9"X7"-N)	1	1	1	UR
	6G1-W4592-00-EL	PROPELLER (3X9"X5"-N) HELICE (3X9"X5"-N)	1	1	1	UR
17	6G1-45616-01	.NUT, PROPELLER .CONE, HELICE	1	1	1	
18	90201-10M02	.WASHER, PLATE .RONDELLE, PLATE	1	1	1	



68R0300-0290

FIG. 25 STEERING GUIDE

FIXATION DE DIRECTION

[illegible]

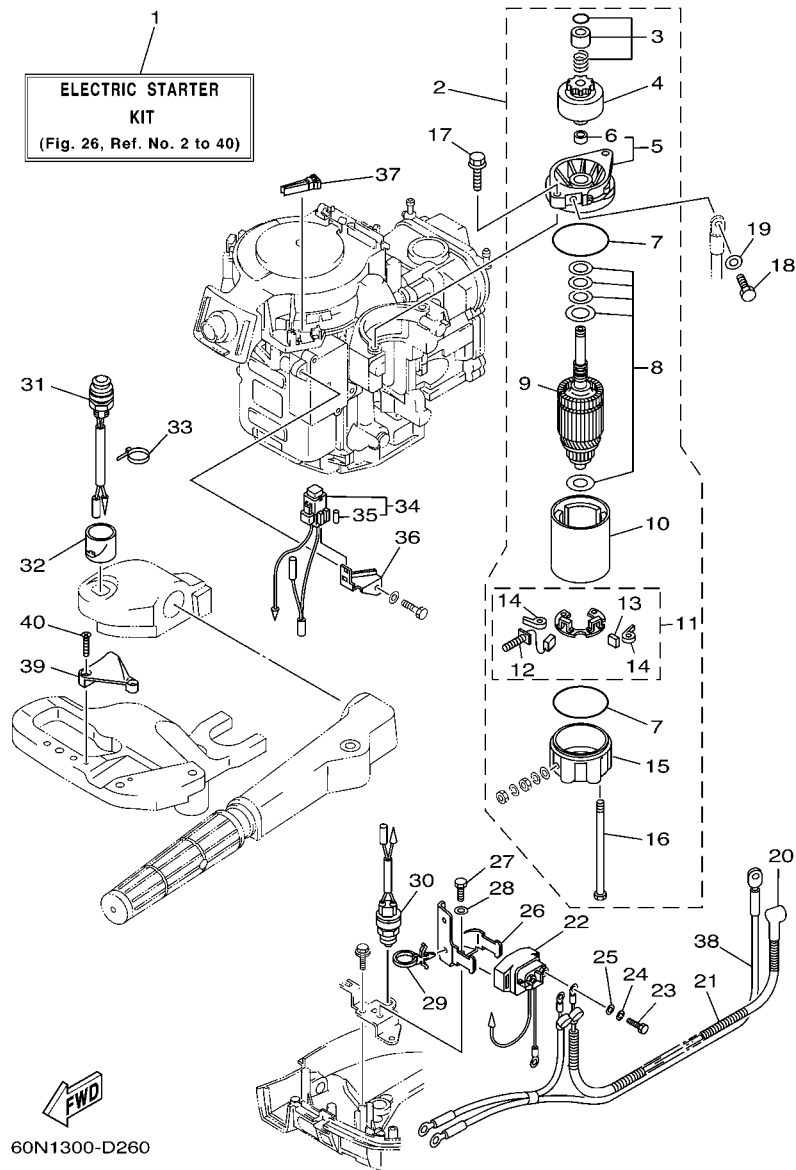


FIG. 26 OPTIONAL PARTS 1

PIECES OPTIONNELLES 1

REF. NO.	PART NO. N° PIECES	DESCRIPTION DESCRIPTION	60N2	60P2	60R2	REMARKS REMARQUES
1	68R-W8180-00	ELECTRIC STARTER KIT KIT DEMARREUR ELECTRIQUE	1	1	1	AP AP
2	68T-81800-00	STARTING MOTOR ASSY DEMARREUR ELECTRIQUE COMPLET	1	1	1	
3	68T-81857-00	.RETAINER .ARRETOIR	1	1	1	
4	689-81807-12	.GEAR ASSY, STARTING MOTOR .PIGNON, DEMARREUR ELECTRIQUE	1	1	1	
5	6F5-81830-10	.FRONT BRACKET ASSY .SUPPORT AVANT	1	1	1	
6	689-81831-00	..METAL, FRONT ..METAL, AVANT	1	1	1	
7	689-81847-11	.O-RING .JOINT TORIQUE	2	2	2	
8	689-81809-11	.WASHER KIT .JEU DE RONDELLES	1	1	1	
9	689-81850-11	.ARMATURE ASSY .INDUIT	1	1	1	
10	689-81810-11	.STATOR ASSY .STATOR COMPLET	1	1	1	
11	689-81840-11	.BRUSH HOLDER ASSY .SUPPORT DE CHARBON	1	1	1	
12	689-81811-11	..BRUSH 1 ..CHARBON 1	1	1	1	
13	689-81812-11	..BRUSH 2 ..CHARBON 2	1	1	1	
14	689-81813-10	..SPRING, BRUSH ..RESSORT, DE CHARBON	2	2	2	
15	689-81820-11	.REAR BRACKET ASSY .SUPPORT ARRIERE COMPLET	1	1	1	
16	689-81826-10	.BOLT .BOULON	2	2	2	
17	90119-08M76	BOLT, WITH WASHER BOULON, AVEC RONDELLE	2	2	2	
18	97095-08016	BOLT BOULON	1	1	1	
19	92995-08600	WASHER RONDELLE	1	1	1	
20	6G8-82117-00	WIRE, LEAD FIL	1	1	1	
21	90446-10M86	HOSE (L140) DURITE (L140)	1	1	1	
22	68T-81940-00	STARTER RELAY ASSY LANCEUR RELAIS (ENS.)	1	1	1	
23	97095-06010	BOLT BOULON	2	2	2	
24	92995-06100	WASHER, SPRING RONDELLE, GROWER	2	2	2	
25	92995-06600	WASHER RONDELLE	2	2	2	
26	68T-81945-00	PLATE, SWITCH FITTING PLAQUE, FIXATION DU RELAIS	1	1	1	
27	97095-06012	BOLT BOULON	1	1	1	

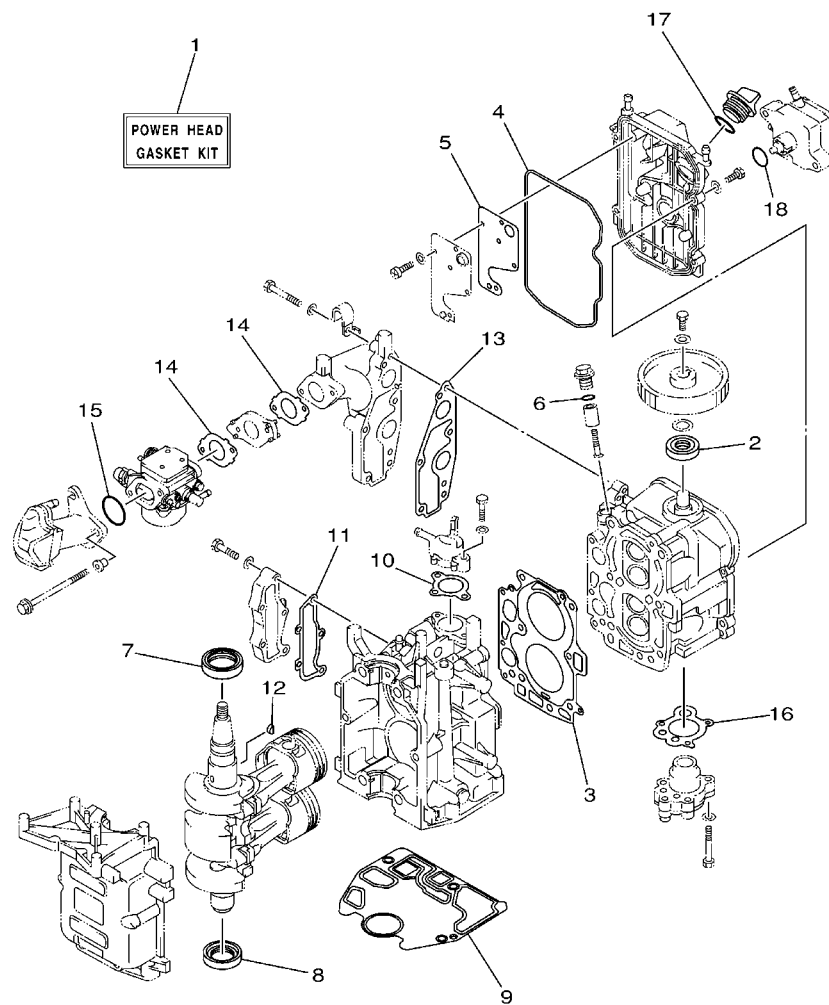


68R1100-2280

FIG. 27 **OPTIONAL PARTS 2**

PIECES OPTIONNELLES 2

[illegible]



68R0100-0250

FIG. 28 REPAIR KIT 1

KITS DE REPARATION 1

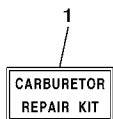
REF. NO.	PART NO. N° PIECES	DESCRIPTION DESCRIPTION	60N2	60P2	60R2	REMARKS REMARQUES
1	68T-W0001-00	POWER HEAD GASKET KIT POCHETTE DE JINTS TETE MOTRICE	1	1	1	
2	93102-18M21	.OIL SEAL .JOINT SPY	1	1	1	
3	68T-11181-00	.GASKET, CYLINDER HEAD 1 .JOINT, DE CULASSE 1	1	1	1	
4	68T-11356-00	.SEAL, CYLINDER 2 .JOINT, SPY CYLINDRE	1	1	1	
5	68T-11169-A0	.GASKET, BREATHER COVER .JOINT, COUVERCLE DE RENIFLARD	1	1	1	
6	93210-13M63	.O-RING .JOINT TORIQUE	1	1	1	
7	93102-30M22	.OIL SEAL .JOINT SPY	1	1	1	
8	93101-25M69	.OIL SEAL .JOINT SPY	1	1	1	
9	68T-11351-00	.GASKET, CYLINDER .JOINT, D'EMBASE	1	1	1	
10	60R-E2414-A0	.GASKET, COVER .JOINT, COUVERCLE	1	1	1	
11	68T-41114-A0	.GASKET, EXHAUST OUTER COVER .JOINT, COUVERCLE D'ECHAPPEMEN	1	1	1	
12	90280-03M01	.KEY, WOODRUFF .CLAVETTE, DEMI-LUNE	1	1	1	
13	68T-13645-00	.GASKET, MANIFOLD 1 .JOINT, TUBULURE 1	1	1	1	
14	60R-E3646-A0	.GASKET, MANIFOLD 2 .JOINT, TUBULURE 2	2	2	2	
15	93210-31MJ5	.O-RING .JOINT TORIQUE	1	1	1	
16	68T-13329-00	.GASKET, PUMP COVER .JOINT, COUVERCLE DE POMPE	1	1	1	
17	93210-24M79	.O-RING .JOINT TORIQUE	1	1	1	
18	93210-20M65	.O-RING .JOINT TORIQUE	1	1	1	



FIG. 29 REPAIR KIT 2

KITS DE REPARATION 2

[illegible]

**F7**

KITS DE REPARATION 2

[illegible]

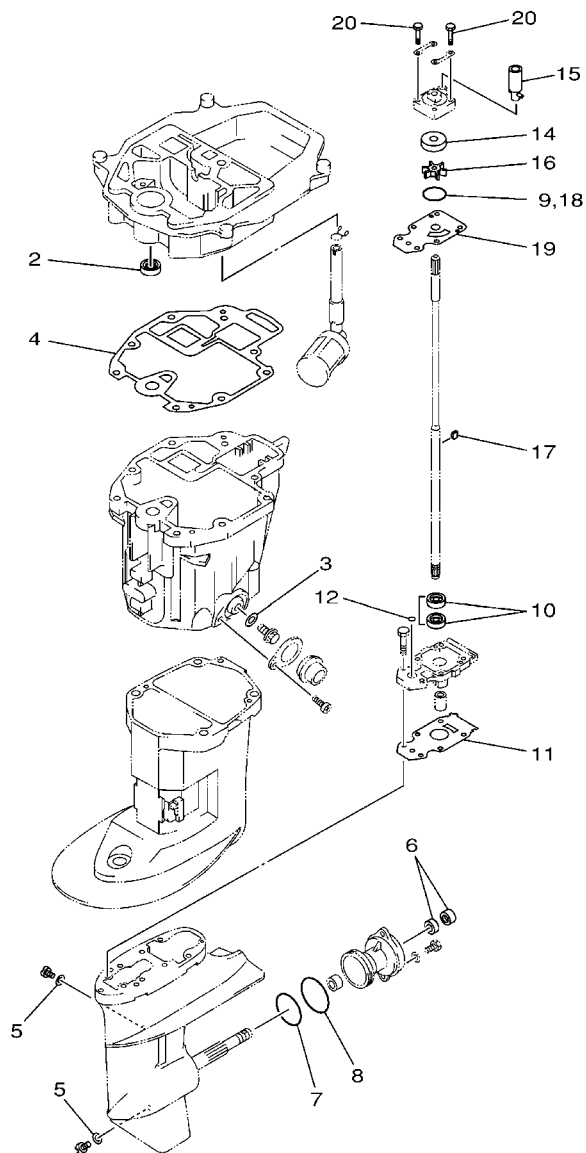


FIG. 30 REPAIR KIT 3

KITS DE REPARATION 3

REF. NO.	PART NO. N° PIECES	DESCRIPTION DESCRIPTION	60N2	60P2	60R2	REMARKS REMARQUES
1	68T-W0001-20	LOWER UNIT GASKET KIT POCHETTE DE JOINTS EMBASE	1	1	1	
2	93101-12M70	.OIL SEAL .JOINT SPY	1	1	1	
3	90430-10M11	.GASKET .JOINT	1	1	1	
4	68T-13475-00	.GASKET .JOINT	1	1	1	
5	90430-08020	.GASKET .JOINT	2	2	2	
6	93101-15074	.OIL SEAL .JOINT SPY	2	2	2	
7	93210-49046	.O-RING .JOINT TORIQUE	1	1	1	
8	93210-53M08	.O-RING .JOINT TORIQUE	1	1	1	
9	93210-44398	.O-RING .JOINT TORIQUE	1	1	1	
10	93101-11M23	.OIL SEAL .JOINT SPY	2	2	2	
11	68T-45315-A0	.PACKING, LOWER CASING .JOINT, BOITIER D'HELICE	1	1	1	
12	93210-06ME6	.O-RING .JOINT TORIQUE	1	1	1	
13	68T-W0078-00	WATER PUMP REPAIR KIT KIT DE REPARATION DE LA POMPE	1	1	1	
14	63V-44322-00	.INSERT, CARTRIDGE .CUVETTE	1	1	1	
15	68T-44366-00	.DAMPER, WATER SEAL .JOINT, TUBE D'EAU	1	1	1	
16	68T-44352-00	.IMPELLER .TURBINE	1	1	1	
17	664-44338-00	.KEY, WOODRUFF .CLAVETTE, VOLANT	1	1	1	
18	93210-44398	.O-RING .JOINT TORIQUE	1	1	1	
19	68T-44323-00	.OUTER PLATE, CARTRIDGE .PLAQUE EXTERIEURE	1	1	1	
20	97080-08045	.BOLT .BOULON	4	4	4	

NUMERICAL INDEX
INDEX NUMERIQUE

PART NO. N° PIECES	REF. NO.	PART NO. N° PIECES	REF. NO.	PART NO. N° PIECES	REF. NO.	PART NO. N° PIECES	REF. NO.	PART NO. N° PIECES	REF. NO.	PART NO. N° PIECES	REF. NO.
67D-11133-10	4 - 3	68T-13645-00	28 - 13	68T-15762-00	10 - 25	68T-41283-00	16 - 18	63V-44301-00	22 - 19	6G1-45635-00	22 - 50
68T-11168-00	4 - 14	68T-14126-00	7 - 19	67D-15764-00	10 - 3	68T-41638-00	16 - 17	63V-44322-00	22 - 20	6G1-45941-00-EL	23 - 15
68T-11169-A0	4 - 15	68T-14271-00	6 - 9	68T-15764-00	10 - 14	6G1-41662-01-94	16 - 6		30 - 14	6G1-45943-00-EL	23 - 15
	28 - 5	60N-14301-20	7 - 1	63V-15767-01	10 - 10	6G1-42125-01	15 - 6	68T-44323-00	22 - 25	6G1-45947-00-EL	23 - 15
68T-11181-00	4 - 4	68T-14301-20	7 - 1	68T-15770-00	10 - 21	6G1-42126-00	15 - 5		30 - 19	6G1-45952-00-EL	23 - 15
	28 - 3	69F-14301-C0	7 - 1	68T-15774-10	10 - 26	68T-42131-01	15 - 21	63V-44328-00	22 - 28	663-48344-00	17 - 12
6G8-11197-01	4 - 20	6E5-14321-00	7 - 2	6G1-15779-00	10 - 17	6G1-42138-01	15 - 2	664-44338-00	22 - 23	63V-48511-01	17 - 17
6G8-11325-00	4 - 18	68T-14323-20	7 - 16	68T-15784-00	10 - 11	63V-42528-00	19 - 3		30 - 17	68T-48531-00	17 - 2
68T-11351-00	2 - 5	6E7-14325-00	9 - 15	6A0-15789-00	10 - 18	63V-42537-00	19 - 7	68T-44352-00	22 - 22	682-48538-50	17 - 3
	28 - 9	6J8-14334-00	7 - 3	68T-15793-00	10 - 13	60R-42615-00	1 - 6		30 - 16	68T-61350-00	25 - 1
68T-11356-00	4 - 11	68T-14385-00	7 - 5	68T-15794-00	10 - 19	68T-42649-00	1 - 10	68T-44361-00	23 - 1	68T-61351-00	25 - 2
	28 - 4		29 - 2	68T-15795-00	10 - 4	6G1-42651-02	1 - 4	68T-44361-10	23 - 1	6E5-61355-00	25 - 7
6H1-11372-00	21 - 12	67D-14386-00	7 - 7	6YL-24201-04	24 - 1	60R-42652-00	1 - 7	63V-44365-10	23 - 2	68T-81800-00	26 - 2
68T-11416-00	3 - 4		29 - 3	68T-24251-00	9 - 7	68R-42677-00	1 - 13	68T-44366-00	22 - 21	689-81807-12	26 - 4
68T-11416-10	3 - 4	647-14395-60	16 - 28	6YL-24260-01	24 - 3	68T-42677-00	1 - 13		30 - 15	689-81809-11	26 - 8
68T-11416-20	3 - 4	68T-14497-00	16 - 21	6YL-24268-01	24 - 6	68R-42678-20	1 - 11	6H3-44391-01	14 - 9	689-81810-11	26 - 10
68T-11557-00	8 - 9	67D-14527-00	7 - 18	6G1-24304-02	9 - 1	68T-42678-20	1 - 11	68T-44517-00-94	19 - 12	689-81811-11	26 - 12
6G8-11575-00	21 - 9	67D-14536-00	7 - 17	6YL-24306-53	24 - 7	68T-42716-10	14 - 5	68T-44526-00	19 - 13	689-81812-11	26 - 13
6G8-11587-01	8 - 10		29 - 8	6YL-24329-00	24 - 5	68T-42717-00	14 - 25	68T-44551-00-4D	19 - 17	689-81813-10	26 - 14
68T-11650-00	3 - 5	68T-14546-00	7 - 8	66M-24374-00	9 - 19	68T-42725-00	14 - 13	6G1-45214-00	23 - 6	689-81820-11	26 - 15
67D-11654-00	3 - 6		29 - 4	650-24378-00	4 - 10	6G1-42725-00	13 - 4	6G1-45215-00	23 - 7	68T-81821-00	26 - 32
67D-12111-00	5 - 1	68T-1492A-00	7 - 11	6E9-24378-00	2 - 14	68T-42725-10	17 - 16	68T-45251-00	22 - 6	68T-81822-00-94	12 - 20
68T-12116-00	5 - 3	68R-1492E-2H	7 - 9	68T-24410-00	9 - 12	688-42726-10	14 - 18	68T-45315-A0	22 - 32	689-81826-10	26 - 16
7NJ-12117-00	5 - 5	60N-1492E-33	7 - 9	66M-24411-00	9 - 16	682-42727-00	14 - 10		30 - 11	6F5-81830-10	26 - 5
7NJ-12118-00	5 - 6	68T-1492E-37	7 - 9	66M-24413-01	9 - 13	68T-42738-00-4D	14 - 11	6G1-45316-09	22 - 30	689-81831-00	26 - 6
51Y-12119-00	5 - 7	68R-1492F-18	7 - 10	6A0-24421-01	9 - 14	6H8-42791-10	14 - 38	6G1-45317-09	22 - 3	689-81840-11	26 - 11
67D-12121-00	5 - 2	68T-1492F-1K	7 - 10	66M-24423-00	9 - 17	68T-42801-00	14 - 6	68T-45321-00	20 - 5	689-81847-11	26 - 7
68T-12146-00	5 - 8	60N-1492F-2A	7 - 10	66M-24444-00	9 - 22	66R-43113-00	18 - 9	6G1-45362-09	22 - 12	689-81850-11	26 - 9
68T-12151-00	5 - 12	6J8-14959-00	7 - 14	66M-24454-00	9 - 20	648-43114-01	18 - 6	63V-45375-00	23 - 10	68T-81857-00	26 - 3
6G8-12158-00	5 - 14		29 - 6	66M-24471-00	9 - 21	6E7-43116-00	18 - 5	68T-45511-00	22 - 36	68T-81870-00	26 - 31
6G8-12159-00	5 - 13	67D-14966-00	7 - 6	6YL-24610-01	24 - 2	63V-43131-10	18 - 7	68T-45511-10	22 - 36	68T-81940-00	26 - 22
66M-12411-01	2 - 6	68T-14981-00	7 - 13	68T-26301-01	15 - 16	6E5-43145-01	25 - 9	6G1-45533-00	22 - 40	68T-81945-00	26 - 26
688-12412-00	2 - 7	67D-14984-00	7 - 12	68T-26367-00	14 - 15	6L2-43160-01	18 - 15	6G1-45533-10	22 - 40	68T-81949-00	27 - 1
68T-12413-00-1S	2 - 8		29 - 5	68T-26393-00	14 - 14	689-43165-00	18 - 16	6G1-45533-20	22 - 40	68T-81960-00	12 - 13
67F-12482-00	6 - 2	66T-14991-00	7 - 15	68T-28100-00	9 - 34	63V-43191-00	18 - 28	6G1-45533-30	22 - 40	68T-82105-00	26 - 38
68T-12535-00	14 - 35	68T-15317-00	21 - 16	67F-2812A-00	26 - 37	68T-43350-00	18 - 26	647-45567-00	22 - 45	6G8-82117-00	26 - 20
68T-12572-00	14 - 33	68T-15362-00	21 - 23		27 - 4	689-43373-01	19 - 4	664-45587-01	22 - 42	68T-82127-00	19 - 2
6R3-12581-00	14 - 32	63V-15705-01	10 - 9	61H-2819R-31	9 - 33	68T-43611-00	18 - 33	664-45587-10	22 - 42	68T-82127-10	12 - 18
6R3-12582-00	14 - 30	68T-15710-11	10 - 1	68T-41114-A0	2 - 15	68T-43614-00	18 - 30	664-45587-20	22 - 42	68T-82150-00	26 - 34
6R3-12583-00	14 - 31	68T-15711-02	10 - 2		28 - 11	68T-43615-00	18 - 32	664-45587-30	22 - 42	66V-82151-00	26 - 35
66M-13131-00	9 - 18	63V-15713-00	10 - 7	68T-41211-00	16 - 20	68T-43617-00	18 - 24	664-45587-40	22 - 42		27 - 2
68T-13300-00	8 - 15	63V-15714-00	10 - 5	69F-41211-00	16 - 20	68T-43627-00	18 - 37	664-45587-50	22 - 42	68T-82171-00	26 - 36
68T-13329-00	8 - 16	68T-15716-00	10 - 8	68T-41256-00	6 - 21	68T-43641-00	18 - 23	664-45587-60	22 - 42		27 - 3
	28 - 16	66T-15731-00	10 - 22	6J8-41262-00	6 - 22	68T-43646-00	18 - 22	68T-45611-00	22 - 51	6E3-82370-21	12 - 12
68T-13421-01	21 - 7	66T-15734-00	10 - 20	661-41262-02	16 - 27	68T-43659-00	18 - 35	6G1-45616-01	23 - 17	67F-82504-00	12 - 17
68T-13475-00	21 - 18	63V-15741-00	10 - 6	6H4-41271-01	6 - 19	66R-44114-00	16 - 11	68T-45631-00	22 - 46	68T-82522-00	12 - 2
	30 - 4	63V-15744-00	10 - 12	689-41273-00	6 - 20	65W-44116-00	16 - 10	6G1-45632-00	22 - 47	6F5-82540-00	26 - 30
68T-13645-00	6 - 3	6G1-15755-00	10 - 15	68R-41283-00	16 - 18	68T-44121-01	16 - 5	654-45633-00	22 - 48	682-82556-00	13 - 2

NUMERICAL INDEX
INDEX NUMERIQUE

PART NO. N° PIECES	REF. NO.	PART NO. N° PIECES	REF. NO.	PART NO. N° PIECES	REF. NO.	PART NO. N° PIECES	REF. NO.	PART NO. N° PIECES	REF. NO.	PART NO. N° PIECES	REF. NO.
65W-82575-01	13 - 1	60R-F4329-00	9 - 2	60R-G5111-00-4D	20 - 1	90119-06049	4 - 8	90386-08032	15 - 15	90501-12M05	22 - 49
689-8257Y-00	13 - 3	6N0-F8176-00	14 - 41	60R-G5111-10-4D	20 - 1	90119-06MA1	11 - 8	90386-22MA4	18 - 8	90501-12M40	5 - 11
68T-82594-00	26 - 39	60R-F8199-71-D0	9 - 35	60R-G5181-00	21 - 3	90119-06MA2	2 - 10	90386-30048	19 - 8	90501-23800	15 - 14
68F-85119-00	14 - 2	60R-F8199-71-E0	9 - 35	60R-G5300-00-4D	22 - 1	90119-06MA3	2 - 16	90386-30M60	19 - 10	90502-10M07	18 - 18
68T-85410-00	12 - 19	60R-F8199-71-F0	9 - 35	60R-G5300-10-4D	22 - 1		6 - 5	90386-33M96	15 - 20	90506-18M41	18 - 27
68T-85520-00	11 - 2	60R-F8199-71-G0	9 - 35	60R-G5311-00-4D	22 - 2	90119-06MA5	6 - 4	90386-34M97	15 - 17	90506-20005	18 - 27
68T-85533-10	11 - 4	60R-F8199-71-H0	9 - 35	60R-G5331-00-5B	22 - 29	90119-08005	21 - 20	90387-06053	14 - 4	90506-20806	18 - 31
68R-85540-00	12 - 1	60R-F8199-71-S0	9 - 35	6N0-G5361-00-4D	22 - 11	90119-08020	12 - 22	90387-06M13	18 - 11	90506-23803	18 - 31
68T-85540-00	12 - 1	60R-F8199-81-K0	9 - 36	6N0-G5551-A0	22 - 39	90119-08046	12 - 21	90387-06M59	16 - 19	91490-16010	15 - 7
69F-85540-00	12 - 1	60R-F8199-81-L0	9 - 36	60R-G5560-00	22 - 41	90119-08M29	2 - 4	90387-06M70	6 - 12	91490-30020	23 - 14
68T-85550-11	11 - 1	60R-F8199-81-M0	9 - 36	60R-G5571-00	22 - 43	90119-08M76	26 - 17	90387-10M42	25 - 6	91690-30008	18 - 17
680-85570-01	12 - 8	60R-F8199-81-N0	9 - 36	6N0-G5987-10	23 - 11	90149-05M13	15 - 12	90387-13M56	5 - 9	91690-30012	17 - 4
68T-85580-01	11 - 3	60R-F8199-81-P0	9 - 36	60R-G6241-00	8 - 7	90151-05003	26 - 40	90387-14M03	5 - 10	91690-30014	16 - 9
6H2-85582-00	11 - 5	60R-F8199-81-R0	9 - 36	60R-G6297-00	8 - 13	90152-05M03	23 - 8	90387-14M49	22 - 4	91690-50014	6 - 6
60R-E1111-00-1S	4 - 2	60R-G1113-00-1S	2 - 13	60R-G8501-00	17 - 1	90157-05M16	24 - 4	90430-08020	22 - 10	91812-12001	2 - 3
60R-E1191-00-1S	4 - 9	60R-G1137-00-94	21 - 1	68D-H257H-00	14 - 40	90167-06002	14 - 34		30 - 5	92903-10600	15 - 13
60R-E1411-00	3 - 3	60R-G2111-00-4D	15 - 1	60R-H3625-40	10 - 28	90170-06015	16 - 15	90430-08800	21 - 5	92907-04600	4 - 17
60R-E1536-00	8 - 8	68D-G2119-00	15 - 9	60R-H3625-50	10 - 29	90170-09M03	25 - 5	90430-10M11	21 - 14	92990-06300	22 - 8
60R-E1537-00-94	8 - 3	60R-G2121-00-4D	15 - 24	60R-H3627-40	15 - 27	90170-12066	11 - 11		30 - 3	92990-06600	18 - 13
60R-E1603-00	3 - 8	60N-G2137-00	15 - 10	60R-H3627-50	15 - 28	90170-24M09	8 - 11	90445-09812	6 - 7	92995-05600	1 - 9
60R-E1604-00	3 - 8	60P-G2137-00	15 - 10	60R-H4342-00	14 - 26	90171-10M01	23 - 13	90445-10809	9 - 5		16 - 4
60R-E1605-00	3 - 8	60R-G2137-00	15 - 10	60R-H5711-60	10 - 31	90179-06M28	19 - 22	90445-10810	9 - 28		17 - 11
60R-E1631-00-96	3 - 7	68D-G2159-00	15 - 3	68T-W0001-00	28 - 1	90179-10M33	15 - 26	90445-10811	9 - 8	92995-06100	9 - 25
60R-E1633-00	3 - 9	68D-G2177-10	15 - 8	68T-W0001-20	30 - 1	90185-05002	23 - 9	90446-10M86	26 - 21		14 - 22
60R-E1635-00	3 - 7	60R-G2511-00-4D	19 - 6	68T-W0070-60	1 - 12	90185-08057	15 - 23	90446-14M66	9 - 10		26 - 24
60R-E1636-00	3 - 7	60R-G2511-10-4D	19 - 6	68T-W0078-00	30 - 13		17 - 20	90447-13M00	14 - 29	92995-06600	4 - 13
60R-E2113-00	5 - 4	60N-G2610-00-4D	1 - 1	68T-W0093-00	29 - 1	90185-09M01	25 - 4	90464-10M53	9 - 32		6 - 18
60R-E2138-60	8 - 19	60R-G2610-00-4D	1 - 1	6G1-W4591-01-EL	23 - 16	90185-22043	18 - 10	90464-10M60	16 - 8		8 - 18
60R-E2171-00	8 - 2	60R-G2613-00	1 - 2	6G1-W4592-00-EL	23 - 16	90201-06M62	16 - 22	90465-08M83	6 - 16		9 - 4
60R-E2414-A0	2 - 9	60R-G2710-00-4D	14 - 1	68R-W8180-00	26 - 1	90201-06M94	8 - 6	90465-08M99	6 - 15		10 - 24
	28 - 10	60S-G2717-00	14 - 19	60R-WE09A-00-1S	4 - 1	90201-10M01	23 - 12		12 - 23		12 - 5
60R-E2481-00	2 - 11		21 - 2	60R-WE09B-00-1S	2 - 1	90201-10M02	23 - 18	90465-11M10	2 - 12		14 - 8
60S-E2481-00	14 - 27	60R-G2724-00	14 - 16	90101-06M18	18 - 12	90201-10M20	25 - 3		9 - 11		16 - 24
60R-E2482-00	2 - 17	60R-G2741-00	14 - 20	90105-06M07	19 - 5	90201-10M63	25 - 8		11 - 9		17 - 6
60R-E2483-00	6 - 14	60R-G3111-00-4D	18 - 1	90105-06M14	8 - 4	90201-12472	11 - 12		12 - 16		19 - 16
60R-E3434-00	1 - 14	60R-G3112-00-4D	18 - 2	90105-08M36	4 - 6	90201-13201	8 - 5		14 - 28		22 - 18
60R-E3437-61	10 - 30	6L8-G3118-01	18 - 3	90105-08M78	4 - 7	90201-15M89	22 - 44		26 - 33		26 - 25
60R-E3444-50	14 - 39	60R-G3311-00-4D	18 - 19	90109-06M81	14 - 12	90202-36M55	15 - 19	90465-12M56	26 - 29		27 - 6
60R-E3641-20-1S	6 - 1	60R-G3311-10-4D	18 - 19		16 - 7	90206-10M24	18 - 39	90467-09M05	22 - 37	92995-08600	17 - 19
60R-E3646-A0	6 - 8	60R-G3616-00	18 - 21	90109-06M84	18 - 38	90206-36M21	15 - 18	90467-09M09	9 - 6		20 - 10
	28 - 14	60R-G3631-00	18 - 20	90109-06M86	10 - 27	90243-04M01	18 - 4	90467-11M08	21 - 8		21 - 22
60R-E4440-00	6 - 10	60R-G4111-00	16 - 1		16 - 12	90266-04M04	1 - 5	90468-18001	16 - 14		23 - 5
60R-E4711-00-5B	20 - 2	60R-G4111-10	17 - 8	90116-08015	15 - 22	90269-02M09	15 - 11	90468-18008	17 - 13		26 - 19
60R-E5100-00-1S	2 - 2	60R-G4143-00	16 - 13	90116-08M54	19 - 11	90280-03M01	8 - 12	90480-06M19	14 - 17	93101-11M23	22 - 31
60R-E5311-00-5B	21 - 11	60R-G4143-10	16 - 13	90116-10019	15 - 25		28 - 12	90480-10627	8 - 14		30 - 10
60R-E5316-00	21 - 15	60R-G4150-00	22 - 35	90119-06012	19 - 20	90280-04M06	11 - 10	90480-14M54	20 - 4	93101-12M70	21 - 6
69M-E5363-00	4 - 22	60R-G4555-00	19 - 19	90119-06013	19 - 21	90340-08002	22 - 9	90480-21M82	14 - 3		30 - 2
60R-E571Y-60	15 - 29	60R-G4557-00	19 - 18	90119-06014	11 - 6	90340-10M10	21 - 13	90480-25161	12 - 9	93101-15074	22 - 14

NUMERICAL INDEX
INDEX NUMERIQUE

PART NO. N° PIECES	REF. NO.	PART NO. N° PIECES	REF. NO.	PART NO. N° PIECES	REF. NO.	PART NO. N° PIECES	REF. NO.	PART NO. N° PIECES	REF. NO.	PART NO. N° PIECES	REF. NO.
93101-15074	30 - 6	97075-08035	23 - 4								
93101-25M69	3 - 2	97080-08025	22 - 34								
	28 - 8	97080-08045	22 - 27								
93102-18M21	8 - 1		30 - 20								
	28 - 2	97095-05010	11 - 7								
93102-30M22	3 - 1	97095-05014	1 - 8								
	28 - 7	97095-05016	16 - 3								
93210-06ME6	22 - 33		17 - 10								
	30 - 12	97095-06008	20 - 6								
93210-12327	16 - 2	97095-06010	6 - 17								
	17 - 9		14 - 36								
93210-13M63	4 - 21		26 - 23								
	28 - 6	97095-06012	12 - 6								
93210-16275	25 - 10		14 - 7								
93210-20M65	9 - 27		16 - 25								
	28 - 18		17 - 5								
93210-24M79	4 - 23		26 - 27								
	28 - 17		27 - 5								
93210-29M94	19 - 9	97095-06016	22 - 17								
93210-31MJ5	6 - 11	97095-06020	4 - 12								
	28 - 15		10 - 23								
93210-44398	22 - 24		12 - 4								
	30 - 9	97095-06025	9 - 3								
93210-49046	22 - 15		12 - 10								
	30 - 7	97095-06030	8 - 17								
93210-53M08	22 - 16		9 - 24								
	30 - 8	97095-06045	16 - 23								
93306-004YH	22 - 5	97095-08014	21 - 4								
93430-04M03	18 - 34	97095-08016	26 - 18								
93450-15023	3 - 10	97575-06514	20 - 3								
93604-12M07	20 - 8	97595-06585	6 - 13								
	21 - 19	97780-40512	12 - 3								
	22 - 26	97780-60516	1 - 3								
	23 - 3	97880-05025	4 - 19								
93606-19M23	21 - 10	97885-05008	20 - 7								
93700-06M03	19 - 1		21 - 17								
94702-00274	4 - 24	97885-05012	15 - 4								
95380-04600	9 - 23	97885-06030	14 - 21								
95380-06600	14 - 24	97980-04112	7 - 4								
	17 - 7		29 - 7								
95380-06700	16 - 16	98507-04010	4 - 16								
	18 - 14	99001-07600	22 - 38								
95380-08600	19 - 14	99080-05600	18 - 25								
95895-06016	22 - 7	99510-10114	4 - 5								
97075-06025	19 - 15										
97075-08030	21 - 21										
97075-08035	17 - 18										
	20 - 9										

F6AMH
F6BMH/F8CMH
PARTS CATALOGUE
©2005 by Yamaha Motor Co., Ltd.
1st edition, May 2005
All rights reserved.
Any reprinting or unauthorized use
without the written permission of
Yamaha Motor Co., Ltd.
is expressly prohibited.
Printed in Japan.

F6AMH
F6BMH/F8CMH
CATALOGUE DE PIECES DETACHEES
©2005 par Yamaha Motor Co., Ltd.
1^{re} édition, mai 2005
Tous droits réservés
Toute réimpression ou utilisation
non autorisée sans la permission écrite
de la Yamaha Motor Co., Ltd.
est formellement interdite.
Imprimé au Japon