

# F8B(6J7) F9.9B(6G9)

## CONTENTS

Fig. 1	CRANKCASE & CYLINDER .....	A3
Fig. 2	CRANK & PISTON .....	A4
Fig. 3	VALVE .....	A5
Fig. 4	OIL PUMP & BELT .....	A6
Fig. 5	CARBURETOR .....	A7
Fig. 6	INTAKE .....	B1
Fig. 7	STARTER .....	B2
Fig. 8	FUEL 1 .....	B3
Fig. 9	FUEL 2 .....	B4
Fig. 10	TOP COWLING .....	B5
Fig. 11	BOTTOM COWLING .....	B6
Fig. 12	BRACKET 1 .....	B7
Fig. 13	BRACKET 2 .....	C1
Fig. 14	STEERING .....	C2
Fig. 15	CONTROL .....	C3
Fig. 16	OIL PAN .....	C4
Fig. 17	UPPER CASING .....	C5
Fig. 18	LOWER & DRIVE 1 .....	C6
Fig. 19	LOWER & DRIVE 2 .....	C7
Fig. 20	C.D.I. MAGNETO ASS'Y .....	D1
Fig. 21	ELECTRICAL .....	D2
Fig. 22	C.D.I. MAGNETO ASS'Y (F8BEM/F8BE/F9.9BEM/F9.9BE MODEL) ...	D3
Fig. 23	STARTING MOTOR (F8BEM/F8BE/F9.9BEM/F9.9BE MODEL) .....	D4
Fig. 24	ELECTRIC PARTS (F8BEM/F9.9BEM MODEL) .....	D5
Fig. 25	ELECTRIC PARTS (F8BE/F9.9BE MODEL) .....	D6
Fig. 26	REMOTE CONTROL .....	D7
Fig. 27	REMOTE CONTROL ASS'Y .....	E1
Fig. 28	OPTIONAL PARTS .....	E2
Fig. 29	REPAIR KIT .....	E3
	NUMRICAL INDEX .....	

# FOREWORD

This Parts Catalogue is related to the parts in use for the Yamaha outboard motor F8B '86 (6J7), F9.9B '86 (6J9). When you are ordering replacement parts for the F8B '86 (6J7), F9.9B '86 (6G9), refer to this Parts Catalogue and quote both part numbers and part names correctly.

1. Modifications or additions which have been made after issue of the Parts Catalogue will be announced in the Yamaha Parts News.  
It is advisable that according to the Yamaha Parts News you make necessary corrections to the Parts Catalogue on hand to keep it up-to-date.

## 2. Abbreviations

The following abbreviations are used in this Parts Catalogue.

- U.R. Use size (thickness) and/or number as required.
- U.N. Use as many as you need.
- A.P. Alternate Parts
- S.T.D. Standard
- O.S. Over Size

3. Parts, which are to be supplied in the form of assemblies, are listed with an indention of one letter's space, and a dot ( . ) is put against the name of each part.

### EXAMPLE

CARBURETOR ASS'Y

. JET, pilot

. NOZZLE, main

4. Indication of No. of constituent parts for assembly.

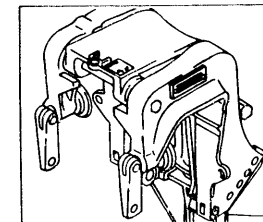
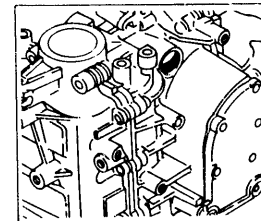
The numeral appearing to the right of each constituent part under the description indicates the quantity of such parts for each individual assembly unit.

### EXAMPLE

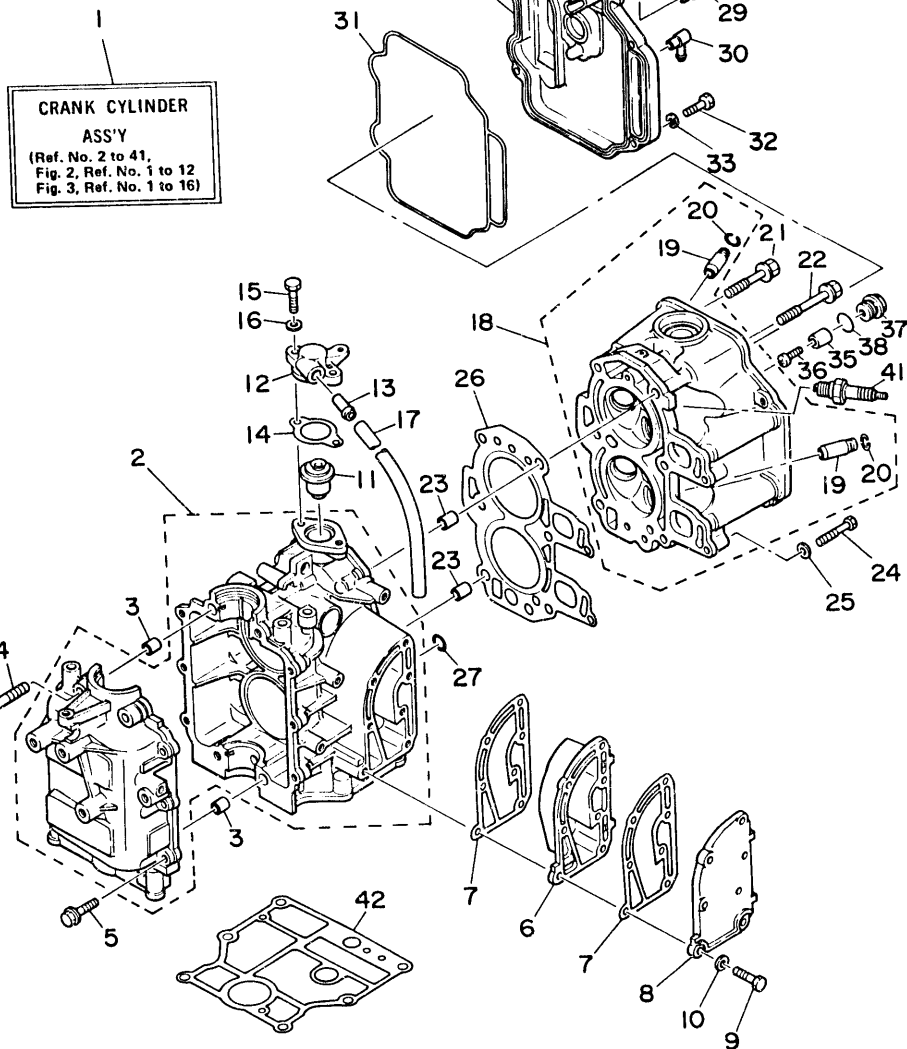
Part No.	Description	Q'ty	Remarks
6E0-85500-70	C.D.I. MAGNETO ASS'Y	1	
6E0-85550-70	. ROTOR ASS'Y	1	
6E0-15723-00-94	. . PULLEY, starter	1	

5. Initial Serial No. and Color Code

Engine Serial No.	
F8BM	S:000151 and following L:300201 and following
F8BE	S:100131 and following L:400171 and following
F8BEM	S:000101 and following L:300101 and following
F9.9BM	S:001847 and following L:300498 and following
F9.9BE	S:100263 and following L:400322 and following
F9.9BEM	S:200104 and following L:500104 and following

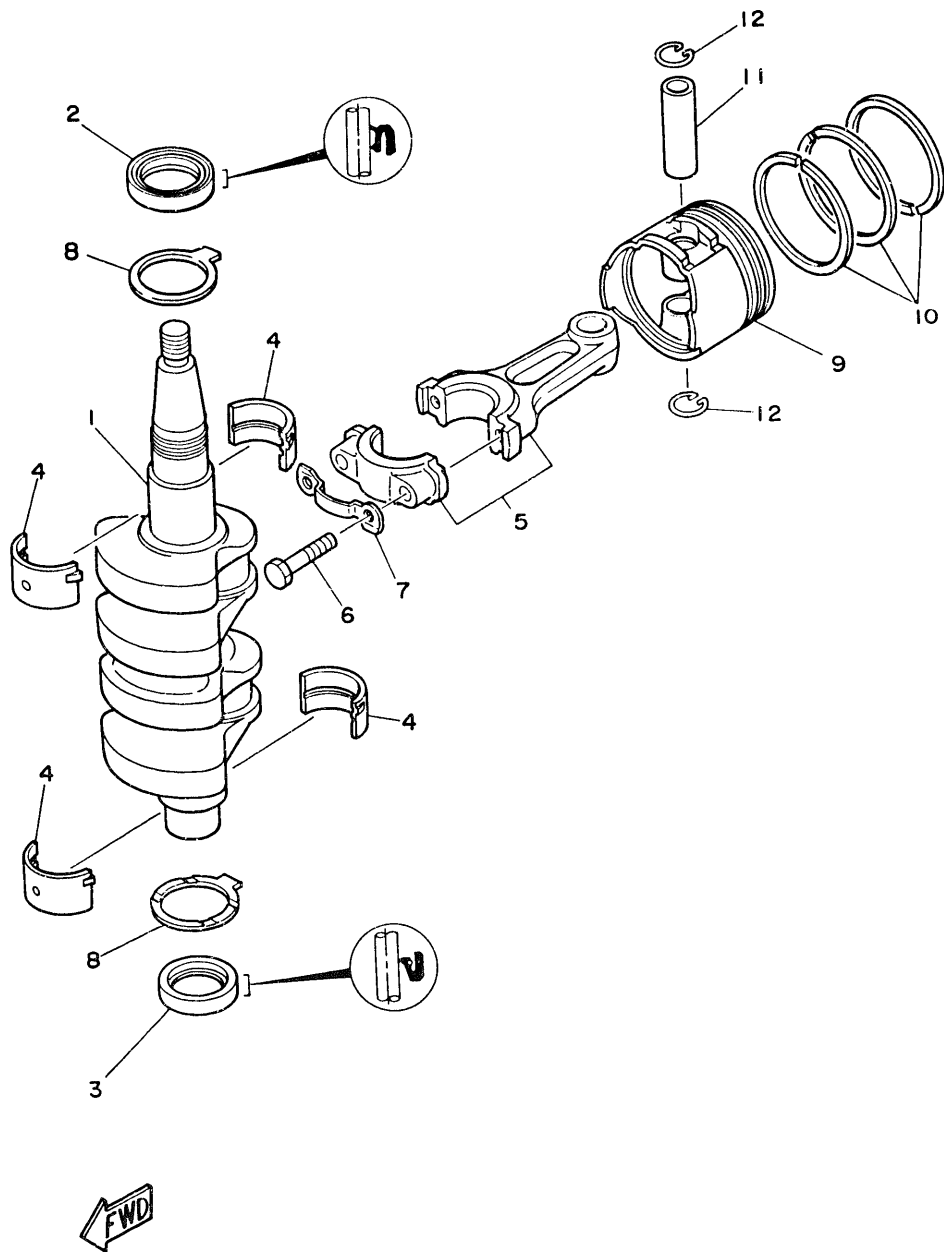


Color Code	Color Name	Abbreviate
EJ	METALLIC MARINE BLUE	MMB



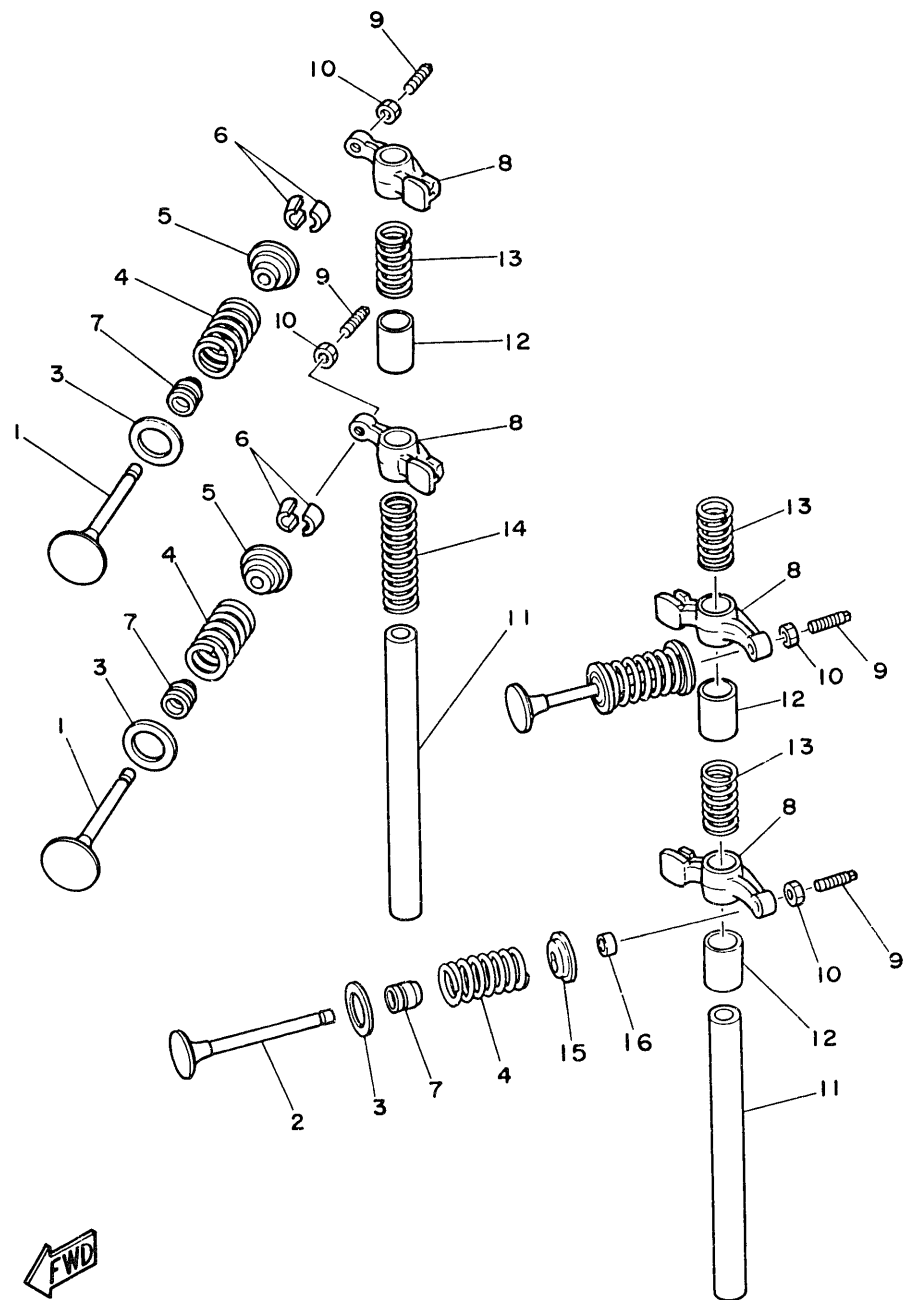
**Fig. 1 CRANKCASE & CYLINDER**

Ref.No.	Parts No.	Description	Q'ty	Ref.No.	Parts No.	Description	Q'ty
1	6G8-W0090-02-EJ	CRANK CYLINDER ASS'Y (F9.9B Model)	1 U.R.	22	90105-08M36	BOLT	3
	6J6-W0090-00-EJ	CRANK CYLINDER ASS'Y (F8B Model)	1 U.R.	23	99510-10114	PIN, dowel A	2
2	6G8-15100-01-94	CRANKCASE ASS'Y	1	24	97313-06035	BOLT	2
3	99510-10114	PIN, dowel A	2	25	92903-06600	WASHER	2
4	90119-08M18	BOLT	4	26	6G8-11181-00	GASKET, cylinder head	1
5	90119-06M12	BOLT	6	27	93210-11M59	O-RING	1
6	6G8-41111-00-9M	INNER COVER, exhaust	1	28	6G8-11191-00-94	COVER, cylinder head	1
7	6G8-41112-00	GASKET, exhaust inner cover	2	29	6G8-15373-00	PIPE, breather	1
8	6G8-41113-00-9M	OUTER COVER, exhaust	1	30	676-11372-00	NIPPLE, hose 2	2
9	97313-06025	BOLT	7	31	6G8-11356-00	SEAL	1
10	92990-06600	WASHER	7	32	97313-06020	BOLT	4
11	6G8-12411-00	THERMOSTAT	1	33	92903-06600	WASHER	4
12	6G8-12413-00-94	COVER, thermostat	1	34	6G8-81336-00	GROMMET	2
13	6E5-24377-00	PIPE, joint	1	35	6G8-11325-00	ANODE	1
14	6G8-12414-0G	GASKET, cover	1	36	98580-05025	SCREW	1
15	97313-06020	BOLT	2	37	6G8-11197-00	PLUG, blind	1
16	92903-06600	WASHER	2	38	93210-13M63	O-RING	1
17	90445-11M66	HOSE	1	39	6G8-15363-00	PLUG, oil	1
18	6G8-11111-00-94	HEAD, cylinder	1	40	93210-24M79	O-RING	1
19	6G8-11133-10	. GUIDE, valve intake	4	41	94701-00282	PLUG, spark (CR6HS) NGK (F9.9B Model)	2 U.R.
20	93450-09M01	. CIRCLIP	4				
21	90105-08M37	BOLT	3		94701-00300	PLUG, spark (CR5HS) NGK (F8B Model)	2 U.R.
				42	6G8-11351-00	GASKET, cylinder	1



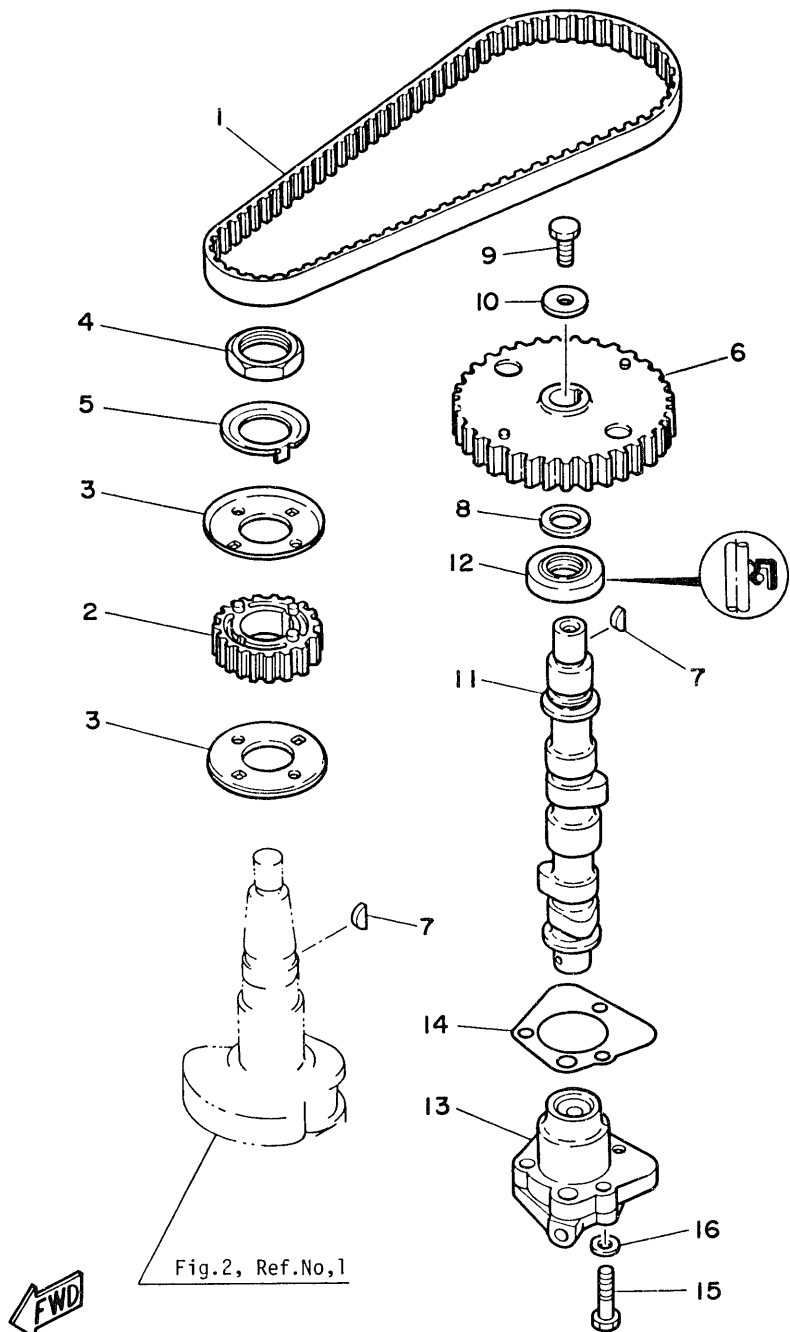
**Fig. 2 CRANK & PISTON**

Ref.No.	Parts No.	Description	Q'ty	Ref.No.	Parts No.	Description	Q'ty
1	6G8-11411-01	CRANK SHAFT	1	8	6G8-11426-00	BEARING, thrust	2
2	93102-30M22	OIL SEAL	1	9	6G8-11631-00-97	PISTON (S.T.D.)	2
3	93101-25M24	OIL SEAL	1		6G8-11635-00	PISTON (1st O.S.)	2 A.P.
4	6G8-11416-00	BEARING, plain (Brawn)	4 U.R.		6G8-11636-00	PISTON (2nd O.S.)	2 A.P.
	6G8-11416-10	BEARING, plain (Black)	4 U.R.	10	6G8-11610-00	PISTON RING SET (S.T.D.)	2
	6G8-11416-20	BEARING, plain (Blue)	4 U.R.		6G8-11610-10	PISTON RING SET (1st O.S.)	2 A.P.
5	6G8-11650-01	ROD, connecting	2		6G8-11610-20	PISTON RING SET (2nd O.S.)	2 A.P.
6	6G8-11654-00	BOLT, connecting rod	4	11	6G8-11633-00	PIN, piston	2
7	6G8-11449-00	WASHER, lock	2	12	93450-15023	CIRCLIP	4



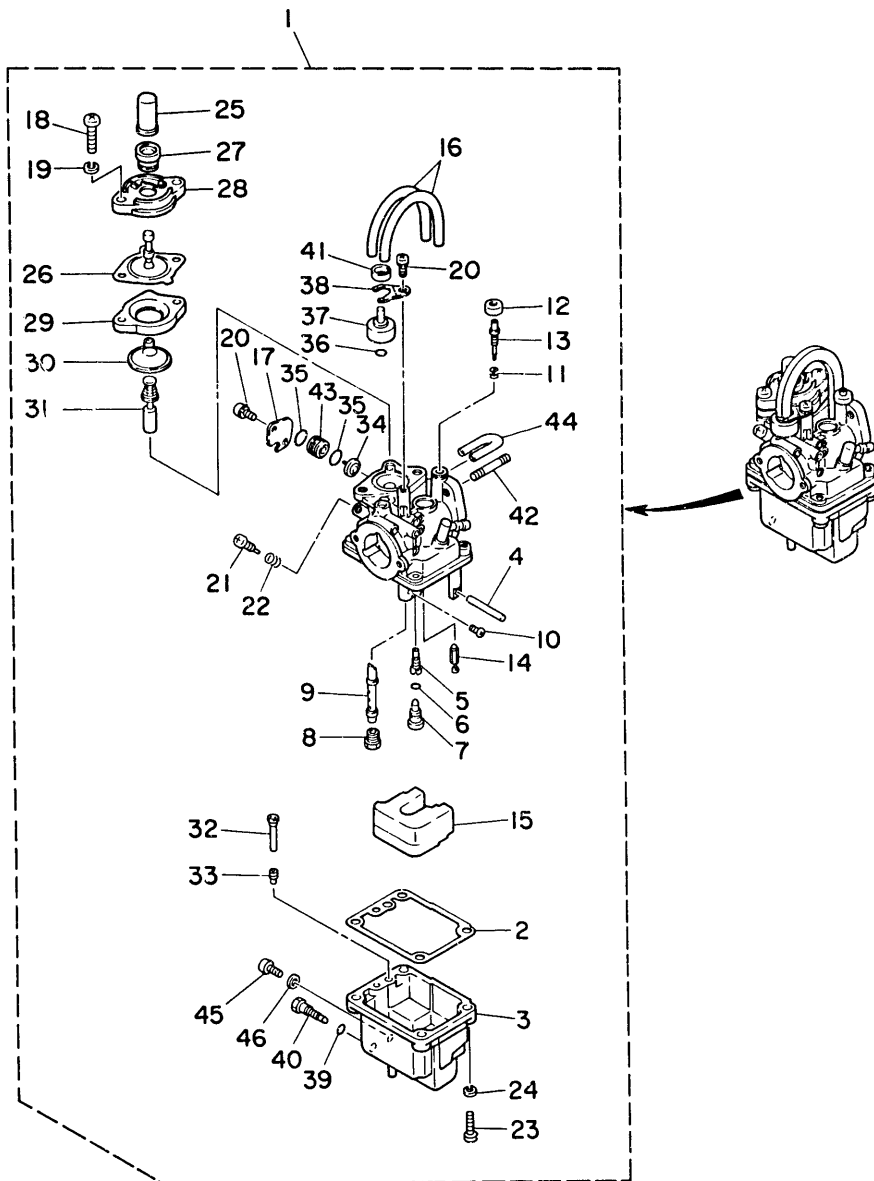
**Fig. 3 VALVE**

Ref.No.	Parts No.	Description	Q'ty	Ref.No.	Parts No.	Description	Q'ty
1	6G8-12111-00	VALVE, intake	2	9	6G8-12159-00	SCREW, valve adjusting	4
2	6G8-12121-01	VALVE, exhaust	2	10	6G8-12158-00	NUT, lock	4
3	6G8-12116-00	SEAT, valve spring	4	11	6G8-12146-00	SHAFT, rocker	2
4	6G8-12113-00	SPRING, compression	4	12	90387-13M56	COLLAR	3
5	6G8-12117-00	RETAINER, valve spring	2	13	90501-12M40	SPRING, compression	3
6	30X-12118-00	LOCK VALVE, spring retainer	4	14	90501-12M41	SPRING, compression	1
7	39X-12119-00	SEAL, valve stem oil	4	15	6G8-12117-10	RETAINER, valve spring	2
8	6G8-12151-00	ARM, valve rocker	4	16	6G8-12153-00	LIFTER, valve	2



**Fig. 4 OIL PUMP & BELT**

Ref.No.	Parts No.	Description	Q'ty	Ref.No.	Parts No.	Description	Q'ty
1	6G8-46241-00	BELT	1	9	97313-06016	BOLT	1
2	6G8-11536-00-94	GEAR, drive	1	10	90201-06M94	WASHER	1
3	6G8-11557-00	WASHER 1	2	11	6G8-12171-00	SHAFT, cam	1
4	90170-24M09	NUT	1	12	93102-18M21	OIL SEAL	1
5	6G8-11587-00	WASHER, lock	1	13	6G8-13300-01	OIL PUMP ASS'Y	1
6	6G8-11537-00-94	GEAR, driven	1	14	6G8-13329-00	GASKET, pump	1
7	90280-03M01	KEY, woodruff	2	15	97313-06025	BOLT	3
8	90201-13201	WASHER	1	16	92903-06600	WASHER	3



FWD

Fig. 5 CARBURETOR

Ref.No.	Parts No.	Description	Q'ty	Ref.No.	Parts No.	Description	Q'ty
1	6G9-14301-00	CARBURETOR ASS'Y (F9.9B Model)	1 U.R.	22	646-14212-01	. SPRING, air adjusting	1
	6J7-14301-01	CARBURETOR ASS'Y (F8B Model)	1 U.R.	23	97803-04016	. SCREW	4
2	6G8-14384-00	. GASKET, float chamber	1	24	92903-04100	. WASHER	4
3	6G8-14381-00	. BODY, float chamber	1	25	6G8-14355-00	. CAP	1
4	647-14386-00	. PIN, float	1	26	6G8-14368-00	. DIAPHRAGM	1
5	6G8-14342-21	. JET, pilot (#42) (F9.9B Model)	1 U.R.	27	6G8-14373-00	. COVER, plunger cap	1
	6G8-14342-20	. JET, pilot (#40) (F8B Model)	1 U.R.	28	6G8-14374-00	. CAP, plunger	1
6	654-14198-00	. GASKET	1	29	14T-14367-00	. STOPPER	1
7	6G8-14345-00	. PLUG	1	30	33A-14369-00	. DIAPHRAGM	1
8	648-14343-47	. JET, main (#94) (F9.9B Model)	1 U.R.	31	6G8-14371-00	. PLUNGER, starter	1
	648-14343-46	. JET, main (#92) (F8B Model)	1 U.R.	32	6G8-14318-27	. PIPE, starter	1
9	6G8-14341-00	. NOZZLE, main (F9.9B Model)	1 U.R.	33	6A4-14344-31	. JET, starter	1
	6J6-14341-20	. NOZZLE, main (F8B Model)	1 U.R.	34	6G8-14272-00	. VALVE, check	1
10	654-14216-00	. SCREW	1	35	1J2-14397-00	. O-RING	2
11	647-14334-00	. SPRING	1	36	5H0-14397-00	. O-RING	1
12	6G8-14997-00	. SEAL	1	37	6G8-14313-00	. VALVE, air	1
13	6G8-14323-00	. SCREW, air adjusting	1	38	6G8-14377-00	. STOPPER	1
14	6G8-14392-00	. VALVE, needle	1	39	5Y1-14397-00	. O-RING	1
15	6G8-14385-00	. FLOAT ASS'Y	1	40	6G8-14383-00	. SCREW, drain	1
16	6G8-14197-00	. PIPE	2	41	44J-14349-00	. PIPE	1
17	6G8-14346-00	. PLATE	1	42	90116-06M26	. BOLT, stud	2
18	97803-06020	. SCREW	2	43	6G8-14271-00	. INSULATOR	1
19	92903-06100	. WASHER	2	44	14T-14396-00	. PIPE	1
20	97803-04007	. SCREW	3	45	650-14222-01	. SCREW, drain	1
21	648-14321-00	. SCREW, throttle	1	46	650-14227-01	. GASKET	1

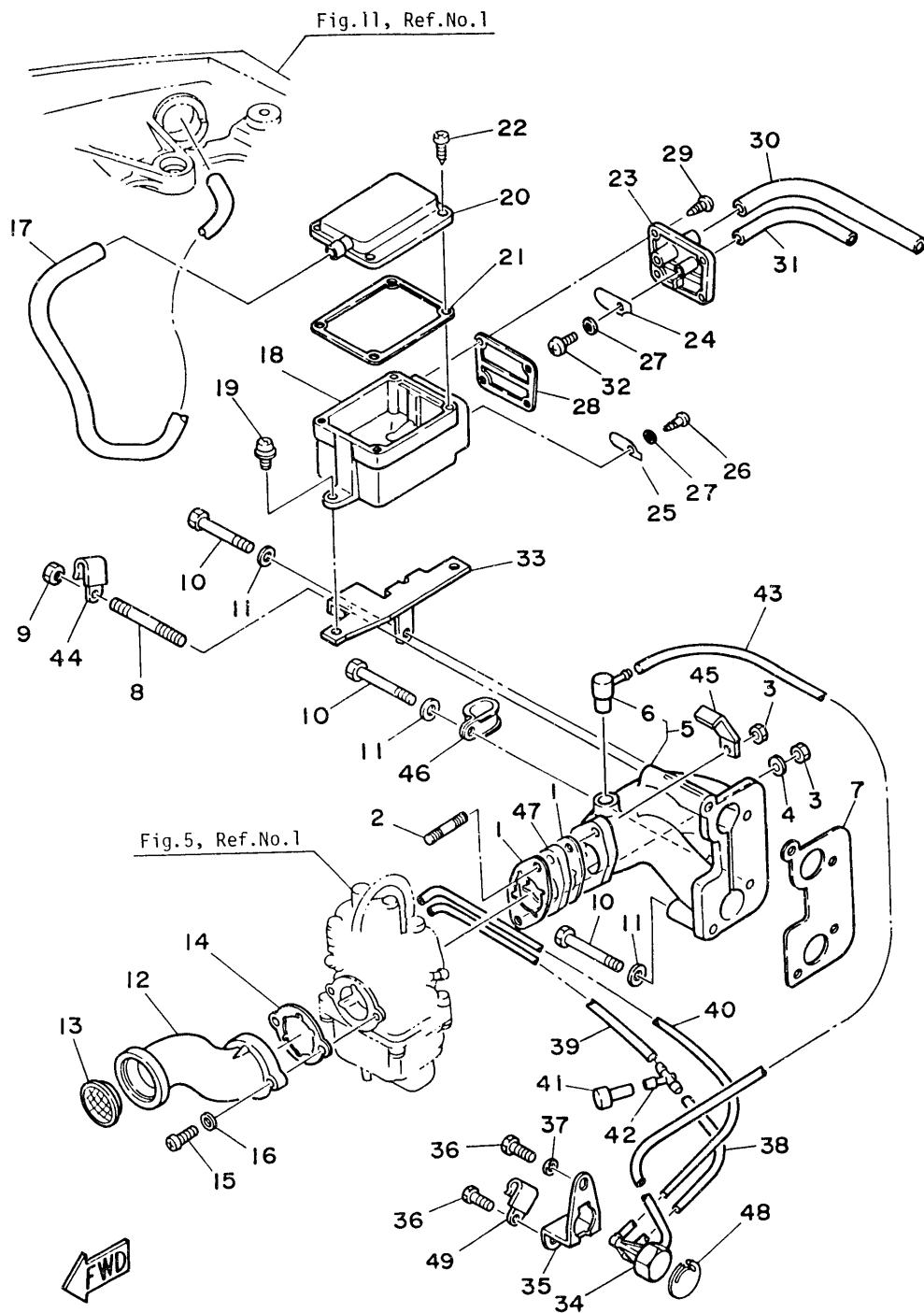


Fig. 6 INTAKE

Ref.No.	Parts No.	Description	Q'ty	Ref.No.	Parts No.	Description	Q'ty
1	6G8-13646-00	GASKET, intake manifold 2	2	26	97780-40512	SCREW, tapping	1
2	90116-06M26	BOLT, stud	2	27	92990-04200	WASHER	2
3	95303-06700	NUT	2	28	6G8-15374-00	GASKET, breather	1
4	92903-06600	WASHER	1	29	97780-40512	SCREW, tapping	4
5	6G8-13641-00-94	MANIFOLD, intake	1	30	90445-11M52	HOSE	1
6	6G8-11370-00	. CHECK VALVE ASS'Y	1	31	90445-09065	HOSE	1
7	6G8-13645-00	GASKET, intake manifold 1	1	32	98502-04010	SCREW, panhead	1
8	90116-06M15	BOLT, stud	1	33	6G8-15376-00	HOLDER	1
9	95380-06700	NUT	1	34	6G8-14399-00	VALVE, bimetal vacuum switch	1
10	97313-06045	BOLT	3	35	6G8-11395-00	HOLDER	1
11	92903-06600	WASHER	3	36	97313-06012	BOLT	2
12	6G8-14479-01-94	FUNNEL	1	37	92903-06600	WASHER	1
13	6G8-14478-00	LOUVER	1	38	90445-08MF5	HOSE	1
14	6G8-14198-00	GASKET	1	39	90445-08MF4	HOSE	1
15	98503-05016	SCREW, panhead	2	40	90445-08MF7	HOSE	1
16	92903-05600	WASHER	2	41	6G8-14309-00	JET COMP.	1
17	6G8-15393-00	HOSE	1	42	6E0-24378-00	PIPE, joint	1
18	6G8-15358-00	SEPARATOR OIL 1	1	43	90445-08MF6	HOSE	1
19	90159-06M05	SCREW, with washer	2	44	90465-08M07	CLAMP	1
20	6G8-15368-00-94	SEPARATOR OIL 2	1	45	90465-08M23	CLAMP	1
21	6G8-15369-00	GASKET	1	46	90461-06M00	CLAMP	1
22	97780-40512	SCREW, tapping	4	47	6G8-13647-00	MANIFOLD, intake 3	1
23	6G8-15371-00-94	BREATHER	1	48	6G8-11326-00	SEAT	1
24	6G8-15346-00	BREATHER 1	1	49	90465-08M07	CLAMP	1
25	6G8-15347-00	BREATHER 2	1				



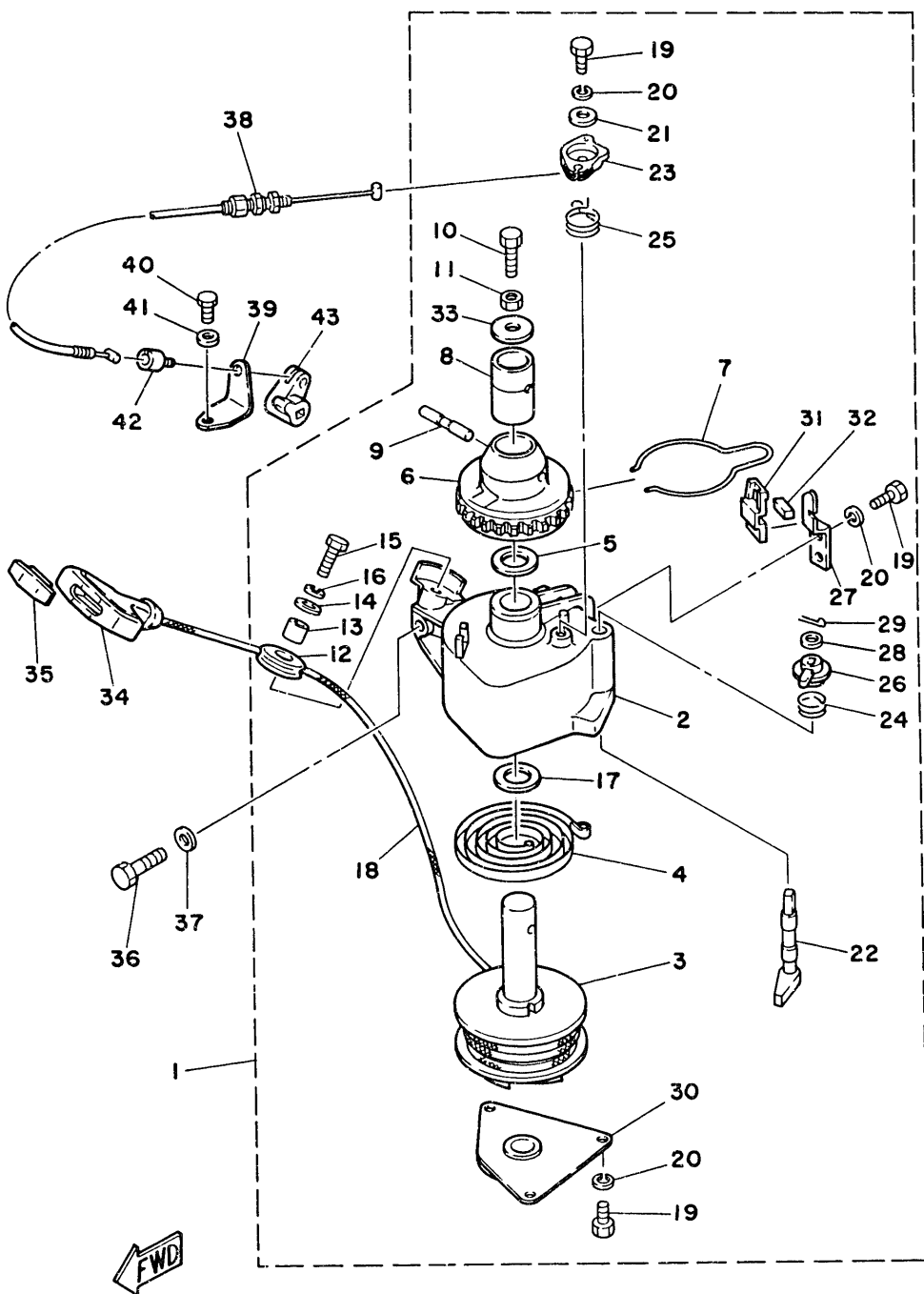
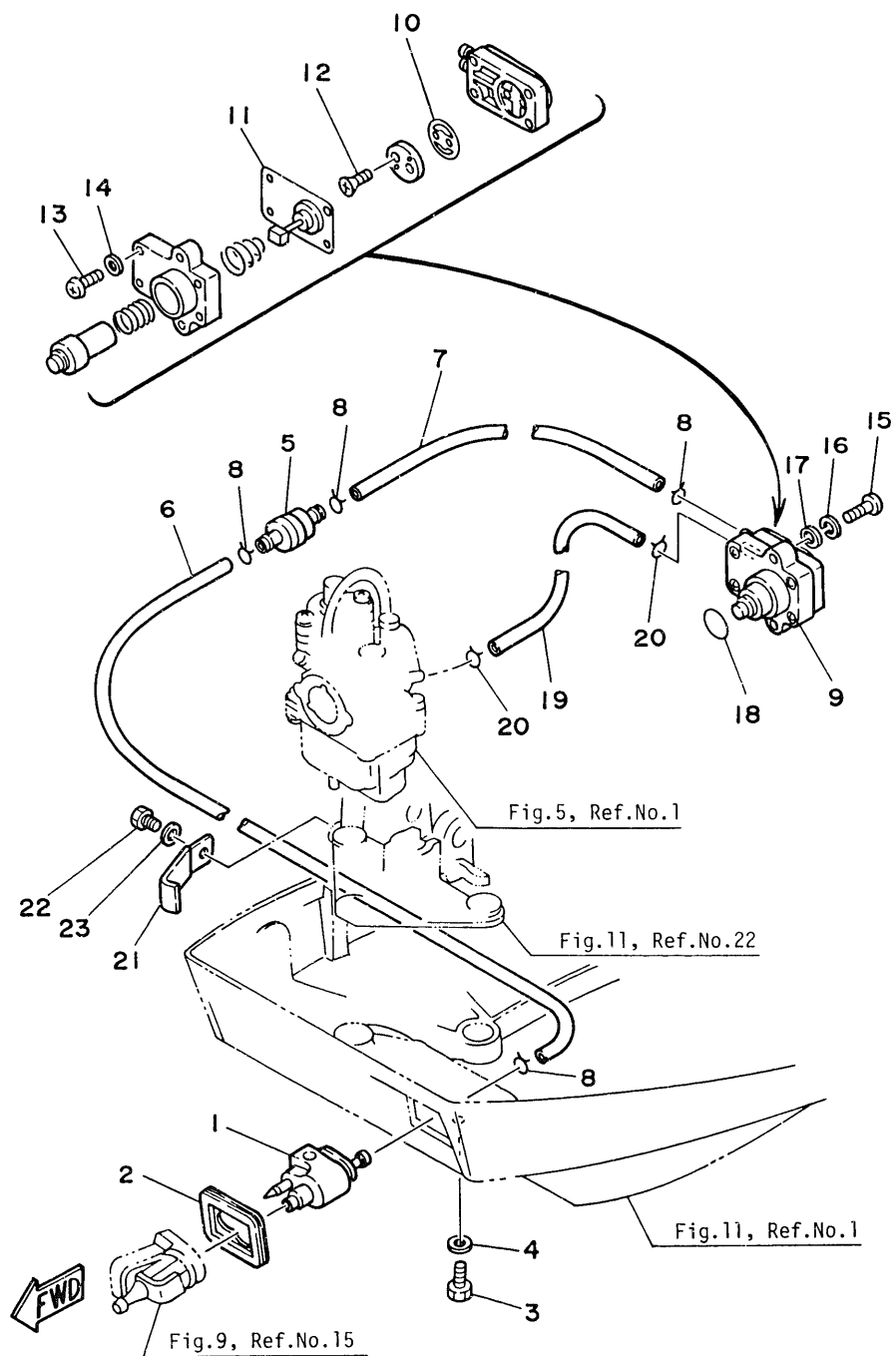


Fig. 7 STARTER

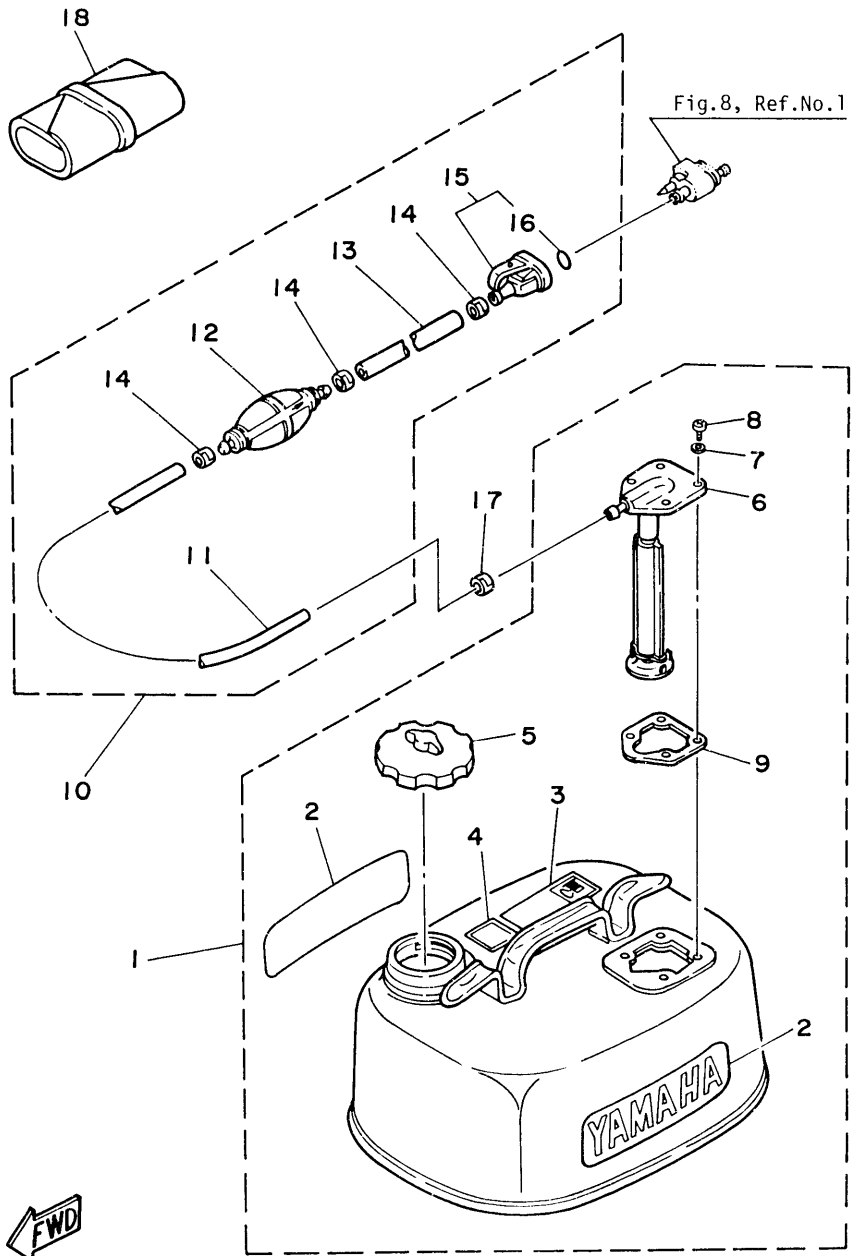
Ref.No.	Parts No.	Description	Q'ty	Ref.No.	Parts No.	Description	Q'ty
1	6G8-15710-10	STARTER ASS'Y	1	23	6G8-15746-00	. ARM	1
2	6G8-15711-00	. CASE, starter	1	24	6G8-15767-00	. SPRING	1
3	6G8-15714-00	. DRUM, sheave	1	25	6G8-15734-00	. SPRING, return 1	1
4	6G8-15713-00	. SPRING, starter	1	26	6G8-15747-00	. LINK	1
5	6G8-15719-00	. WASHER, thrust 1	1	27	6G8-15716-00	. DRIVE, plate	1
6	6G8-15723-00	. PULLEY, starter	1	28	92902-06200	. WASHER	1
7	6G8-15715-00	. SPRING, drive plate	1	29	91490-12012	. PIN, cotter	1
8	6G8-15754-00	. BUSHING 2	1	30	6G8-15712-00	. COVER, starter case	1
9	6G8-15727-00	. PIN 1	1	31	6G8-15779-00	. COVER	1
10	6G8-15768-00	. BOLT	1	32	6G8-15789-00	. DAMPER	1
11	95333-08700	. NUT	1	33	6G8-15742-00	. WASHER	1
12	6F5-15752-00	. ROLLER, wire	1	34	6G1-15755-00	HANDLE, starter	1
13	663-15753-00	. BUSHING 1	1	35	689-15779-01	COVER	1
14	663-15791-00	. WASHER, lock	1	36	97313-08030	BOLT	3
15	97305-06025	. BOLT	1	37	92903-08600	WASHER	3
16	92903-06100	. WASHER	1	38	6G8-15770-00	WIRE COMP., starter stop	1
17	6G8-15739-00	. WASHER, thrust 2	1	39	6G8-15771-00	STAY 1	1
18	#	. WIRE (L=1850)	1	40	97313-06012	BOLT	1
19	97322-05012	. BOLT	6	41	92903-06600	WASHER	1
20	92902-05100	. WASHER	6	42	6G8-15772-00	STAY 2	1
21	6G8-15726-00	. WASHER, flat 1	1	43	6G8-44125-00	LEVER, shift rod	1
22	6G8-15794-00	. STOPPER	1				

# Cut from 50m rolls, Parts No. 90890-44373, cutting length 1.85m.



**Fig. 8 FUEL 1**

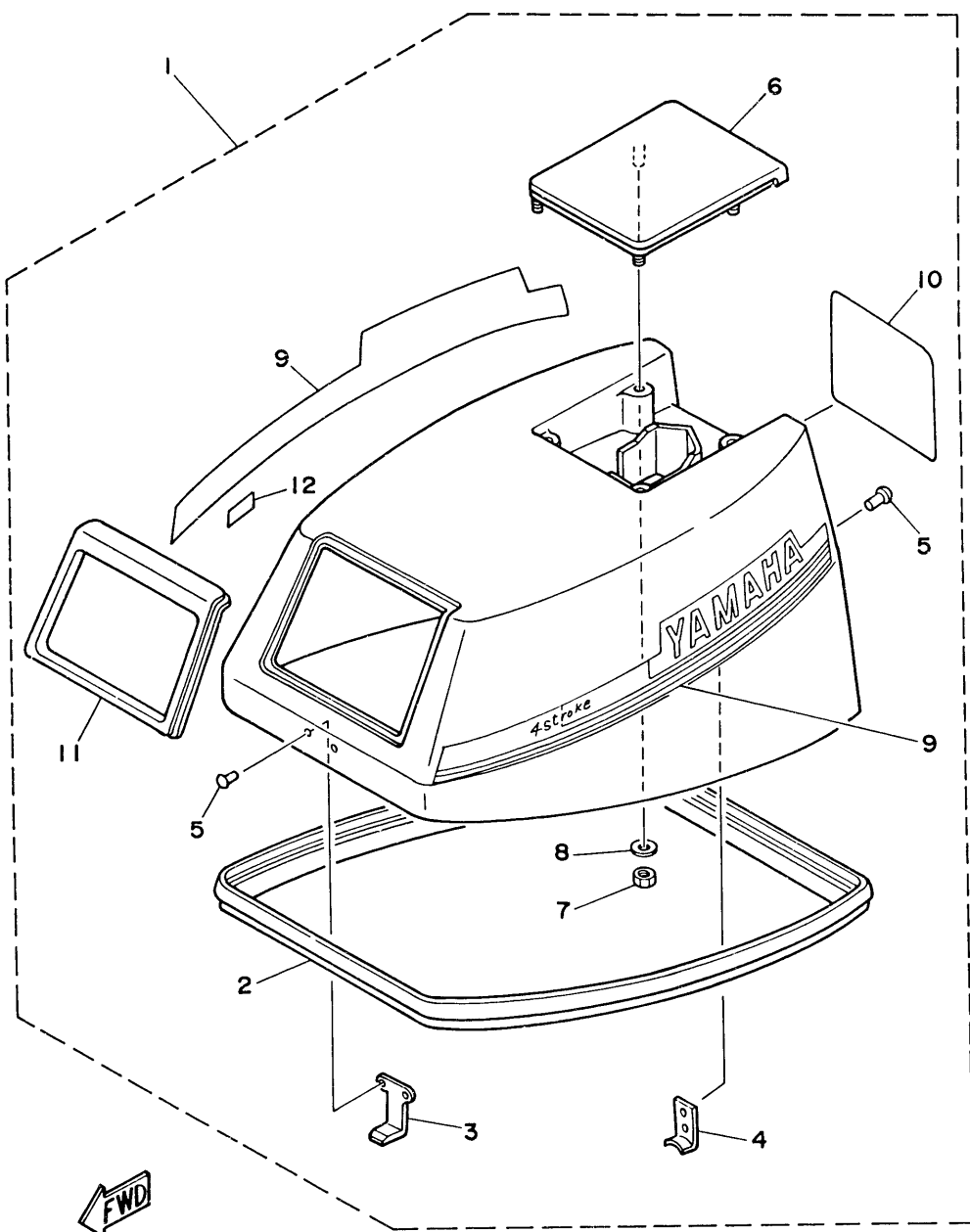
Ref.No.	Parts No.	Description	Q'ty	Ref.No.	Parts No.	Description	Q'ty
1	6G1-24304-01	FUEL PIPE JOINT COMP. 1	1	13	98503-04014	. SCREW, panhead	4
2	6G8-24329-00	SEAL	1	14	92903-04600	. WASHER	4
3	97395-06020	BOLT	1	15	92503-06025	SCREW	2
4	92990-06600	WASHER	1	16	92903-06100	WASHER	2
5	646-24251-01	STRAINER	1	17	92903-06600	WASHER	2
6	6G8-24311-00	PIPE, fuel 1	1	18	93210-20M65	O-RING	1
7	90445-09065	HOSE	1	19	90445-09M75	HOSE	1
8	90467-08004	CLIP	4	20	90467-08004	CLIP	2
9	6G8-24410-00	FUEL PUMP ASS'Y	1	21	90465-08M26	CLAMP	1
10	6G8-24421-00	. VALVE, check	1	22	97313-06010	BOLT	1
11	6G8-24411-00	. DIAPHRAGM	1	23	92903-06600	WASHER	1
12	98701-03008	. SCREW	2				



**Fig. 9 FUEL 2**

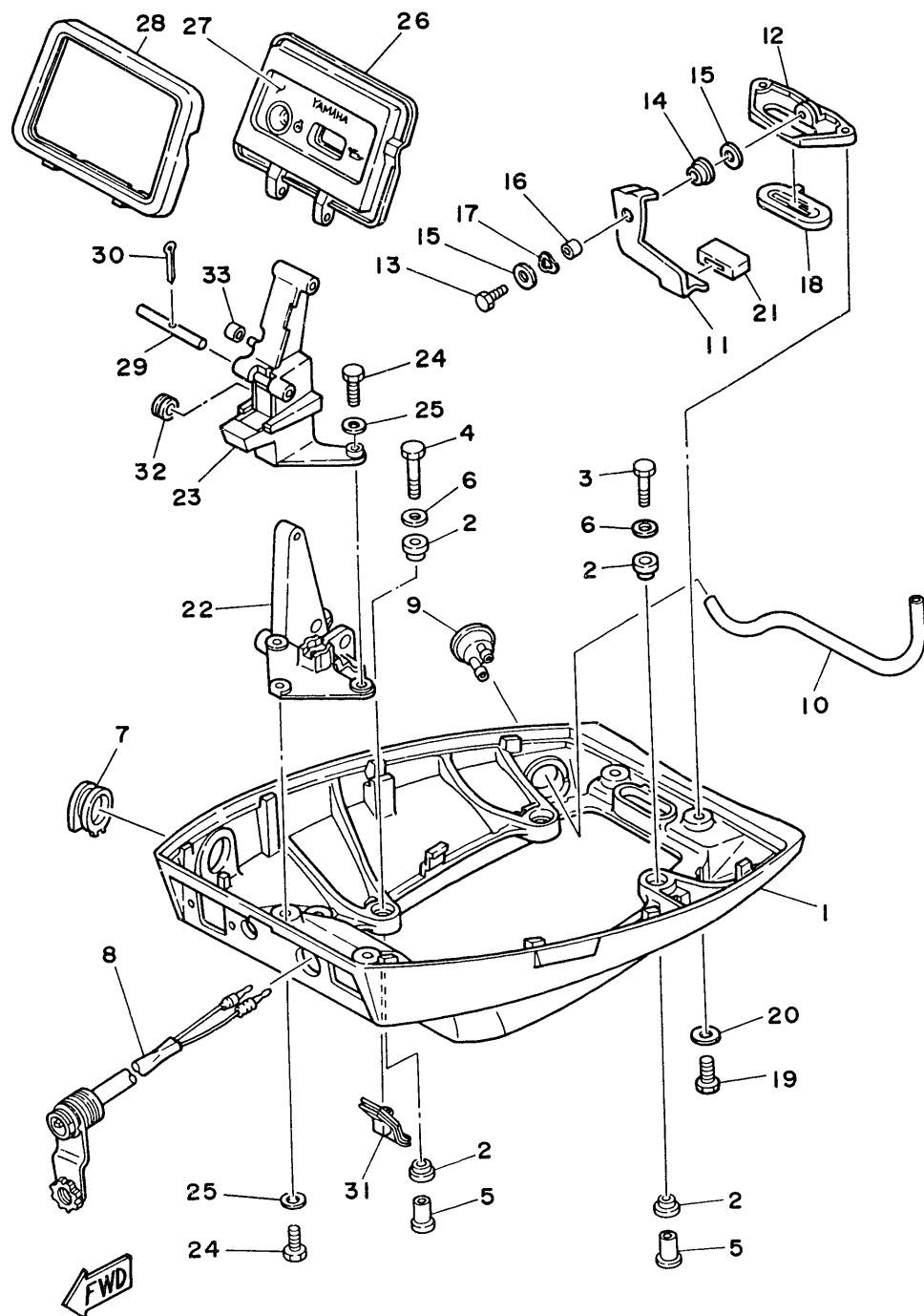
Ref.No.	Parts No.	Description	Q'ty	Ref.No.	Parts No.	Description	Q'ty
1	6Y0-24207-80-24	FUEL TANK ASS'Y	1	10	6Y0-24306-02	FUEL PIPE ASS'Y	1
2	6Y1-24246-00	. GRAPHIC, side	2	#11	90445-11M79	. HOSE (L 1500)	1
3	6Y1-24256-80	. GRAPHIC	1	12	6Y1-24360-00	. PRIMARY PUMP ASS'Y	1
4	6Y1-24257-00	. GRAPHIC	1	#13	90445-11M78	. HOSE (L 1000)	1
5	647-24610-03	. CAP ASS'Y	1	14	650-24351-00	. BAND, fuel pipe 1	3
6	6Y0-24275-60	. FUEL METER ASS'Y	1	15	6G1-24305-00	. FUEL PIPE JOINT COMP. 2	1
7	630-24329-00	. SEAL	4	16	93210-08287	. O-RING	1
8	98580-05015	. SCREW, panhead	4	17	650-24351-00	BAND, fuel pipe 1	1
9	663-24268-00	. GASKET, fuel meter housing	1	18	6G8-28100-00	TOOL ASS'Y	1

# Also available in 30m rolls (Parts No. 90890-56878)



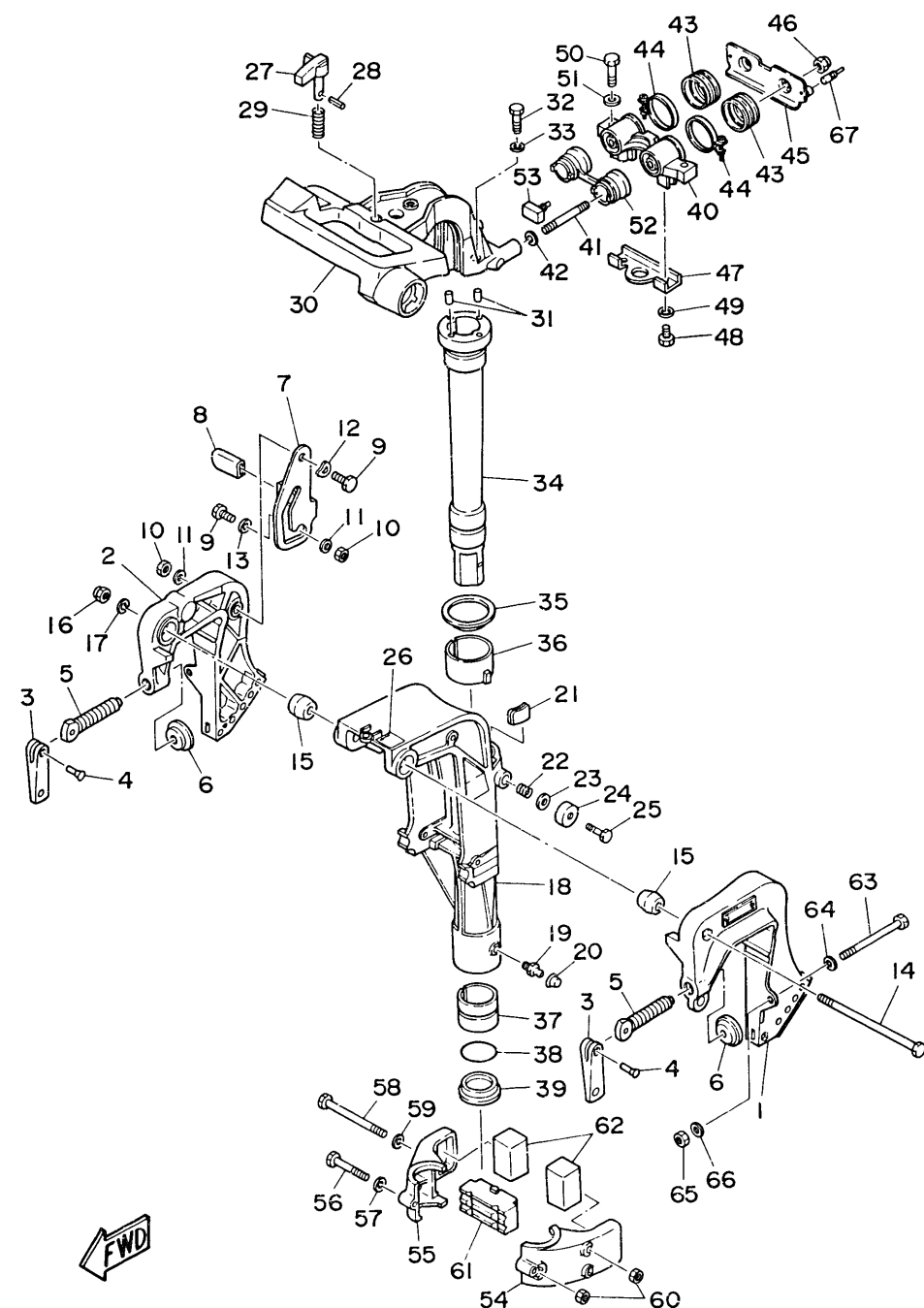
**Fig. 10 TOP COWLING**

Ref.No.	Parts No.	Description	Q'ty	Ref.No.	Parts No.	Description	Q'ty
1	6G9-42610-21-EJ	TOP COWLING ASS'Y (F9.9B Model)	1 U.R.	7	95680-06100	. NUT, U	4
	6J7-42610-21-EJ	TOP COWLING ASS'Y (F8B Model)	1 U.R.	8	92903-06200	. WASHER	4
2	6G8-42615-00	. SEAL	1	9	6G9-W0070-20	. GRAPHIC SIDE SET	1
3	6G8-42651-00	. HOOK 1	1	10	6G9-42678-20	. GRAPHIC, rear (F9.9B Model)	1 U.R.
4	6G8-42652-00	. HOOK 2	1		6J7-42678-20	. GRAPHIC, rear (F8B Model)	1 U.R.
5	90266-04004	. RIVET	4	11	6G8-42628-01	. SEAL	1
6	6G8-42613-00-EJ	. MOLDING, air duct	1	12	6E0-44191-11	. INDICATOR, shift	1



**Fig. 11 BOTTOM COWLING**

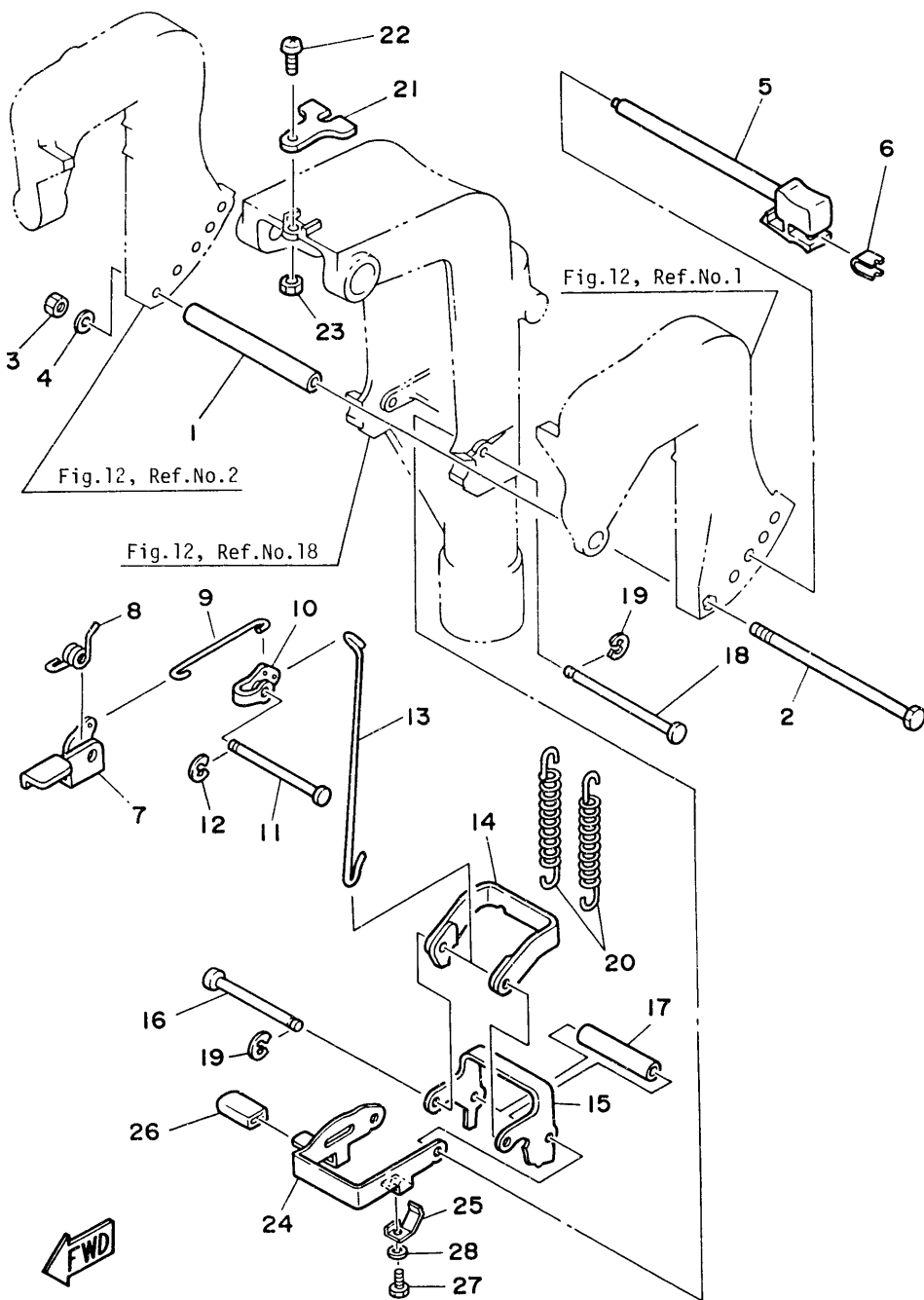
Ref.No.	Parts No.	Description	Q'ty	Ref.No.	Parts No.	Description	Q'ty
1	6G8-42711-00-EJ	COWLING, bottom	1	17	90206-08M13	WASHER, wave	1
2	90480-09M35	GROMMET	8	18	6G8-42748-00	GROMMET	1
3	97313-06030	BOLT	2	19	97395-06016	BOLT	2
4	97313-06040	BOLT	2	20	92990-06600	WASHER	2
5	90387-06M58	COLLAR	4	21	6G8-42831-00	BUSHING, lever	1
6	90201-06M31	WASHER	4	22	6G8-42738-00-94	PLATE, fitting	1
7	6G9-42724-00	GROMMET 1	1	23	6G8-42719-00-EJ	PANEL, front lower	1
	6G8-42724-00	GROMMET 1 (For Remote Control)	1	24	97395-06016	BOLT	4
8	682-84381-00	2P CONCENT 1	1	25	92990-06600	WASHER	4
9	6G8-44391-00	NIPPLE, hose	1	26	6G8-42614-01	PANEL, front upper	1
10	90445-09096	HOSE	1	27	6G8-42677-00	GRAPHIC, front	1
11	6G8-42815-00	LEVER, clamp 1	1	28	6G8-42629-01	SEAL	1
12	6G8-42811-00-94	STAY, clamp	1	29	6G8-42755-00	HINGE, cowling	1
13	97313-06016	BOLT	1	30	91490-16010	PIN, cotter	1
14	90386-08M49	BUSHING	1	31	6G8-42727-00	GROMMET 4	1
15	90201-06M31	WASHER	2	32	90480-19031	GROMMET	1
16	90387-06M72	COLLAR	1	33	90445-05ME6	HOSE	1



FWD

Fig. 12 BRACKET 1

Ref.No.	Parts No.	Description	Q'ty	Ref.No.	Parts No.	Description	Q'ty
1	6G8-43111-00-EJ	BRACKET, clamp 1	1	34	6G9-42521-00-94	SHAFT, steering pivot (Short)	1 U.R.
2	6G8-43112-01-EJ	BRACKET, clamp 2	1		6G8-42521-10-94	SHAFT, steering pivot (Long)	1 U.R.
3	616-43118-00-EJ	HANDLE, transom clamp	2	35	90209-45M09	WASHER	1
4	90243-04001	PIN	2	36	6G8-42537-00	BUSHING, pivot shaft	1
5	90149-14030	SCREW	2	37	90386-37M47	BUSHING	1
6	648-43114-01	PAD, transom clamp	2	38	93210-37M67	O-RING	1
7	6G8-43181-00	LEVER, tilt stop	1	39	90386-37M48	BUSHING	1
8	682-43318-01	COVER	1	40	6G8-44517-00-94	MOUNT RUBBER, upper	1
9	90109-06M25	BOLT	2	41	90116-08M28	BOLT, stud	2
10	95680-06100	NUT, U	2	42	90201-08M12	WASHER, plate	2
11	92990-06600	WASHER	2	43	6G8-44522-00	SEAL RUBBER 2	2
12	90206-10M15	WASHER, wave	1	44	90460-38M06	CLAMP, hose	2
13	682-43339-01	WASHER	1	45	6G8-44518-00	BRACKET	1
14	90101-08M83	BOLT	1	46	90185-08057	NUT	2
15	6G1-43136-00	PIECE, friction	2	47	6G8-44526-00	PLATE	1
16	90185-08057	NUT, self-locking	1	48	97395-06012	BOLT	2
17	92990-08100	WASHER	1	49	92990-06600	WASHER	2
18	6G9-43311-00-EJ	BRACKET, swivel (Short)	1 U.R.	50	97395-08030	BOLT	2
	6G8-43311-11-EJ	BRACKET, swivel (Long)	1 U.R.	51	92990-08600	WASHER	2
19	93700-06004	NIPPLE, grease	1	52	6G8-44521-00	SEAL RUBBER	1
20	663-45119-00	CAP, grease nipple	1	53	6G8-44532-01	STOPPER	1
21	6G8-42528-00	PIECE, friction	1	54	6G8-44551-01-EJ	HOUSING, lower mount 1	1
22	90501-18M00	SPRING, compression	1	55	6G8-44552-01-EJ	HOUSING, lower mount 2	1
23	90201-06M31	WASHER	1	56	97395-06045	BOLT	1
24	6G8-43373-00	SEAL RUBBER	1	57	92990-06600	WASHER	1
25	97395-06025	BOLT	1	58	97395-06095	BOLT	2
26	6G8-43691-00	INDICATOR, tilt	1	59	92990-06600	WASHER	2
27	6G8-42561-00	KNOB, steering lock	1	60	95380-06700	NUT	3
28	91690-30012	PIN, spring	1	61	6G8-44557-00	MOUNT RUBBER, lower front	1
29	90501-10071	SPRING, compression	1	62	682-44555-00	MOUNT RUBBER, lower side	2
30	6G8-42511-00-EJ	BRACKET, steering	1	63	90101-08M88	BOLT	2
31	93605-15065	PIN, dowel B	2	64	92990-08600	WASHER	2
32	97395-06030	BOLT	2	65	90185-08057	NUT	2
33	92990-06600	WASHER	2	66	90201-08MA4	WASHER	2
				67	6G8-44533-00	DAMPER, upper mount rubber	2



**Fig. 13 BRACKET 2**

Ref.No.	Parts No.	Description	Q'ty	Ref.No.	Parts No.	Description	Q'ty
1	90387-06M57	COLLAR	1	16	682-43611-00	SHAFT, tilt lock	1
2	97395-06135	BOLT	1	17	90387-06M10	COLLAR	1
3	95380-06700	NUT	1	18	682-43659-00	SHAFT, reverse lock	1
4	92990-06600	WASHER	1	19	93430-05027	CIRCLIP	2
5	668-43160-00	TILT ROD ASS'Y	1	20	90506-26M01	SPRING, tension	2 U.R.
6	668-43162-00	SPRING, tilt lock lever	1		90506-26M07	SPRING, tension (For Dual Thrust Prop.)	2 U.R.
7	668-43631-00	LEVER, tilt	1	21	668-43319-00	PLATE	1
8	90508-12M18	SPRING, torsion	1	22	92580-06020	SCREW	1
9	682-43616-00	ROD, tilt lock 1	1	23	95780-06300	NUT	1
10	682-43641-00	LEVER, tilt 2	1	24	669-43681-00	LEVER, shallow water drive	1
11	90249-06M16	PIN	1				
12	93430-05027	CIRCLIP	1	25	682-43643-00	SPRING	1
13	668-43617-00	ROD, tilt lock 1	1	26	662-43318-01	COVER	1
14	682-43614-00	PLATE, tilt lock 1	1	27	97395-06008	BOLT	1
15	682-43615-01	PLATE, tilt lock 2	1	28	92990-06600	WASHER	1

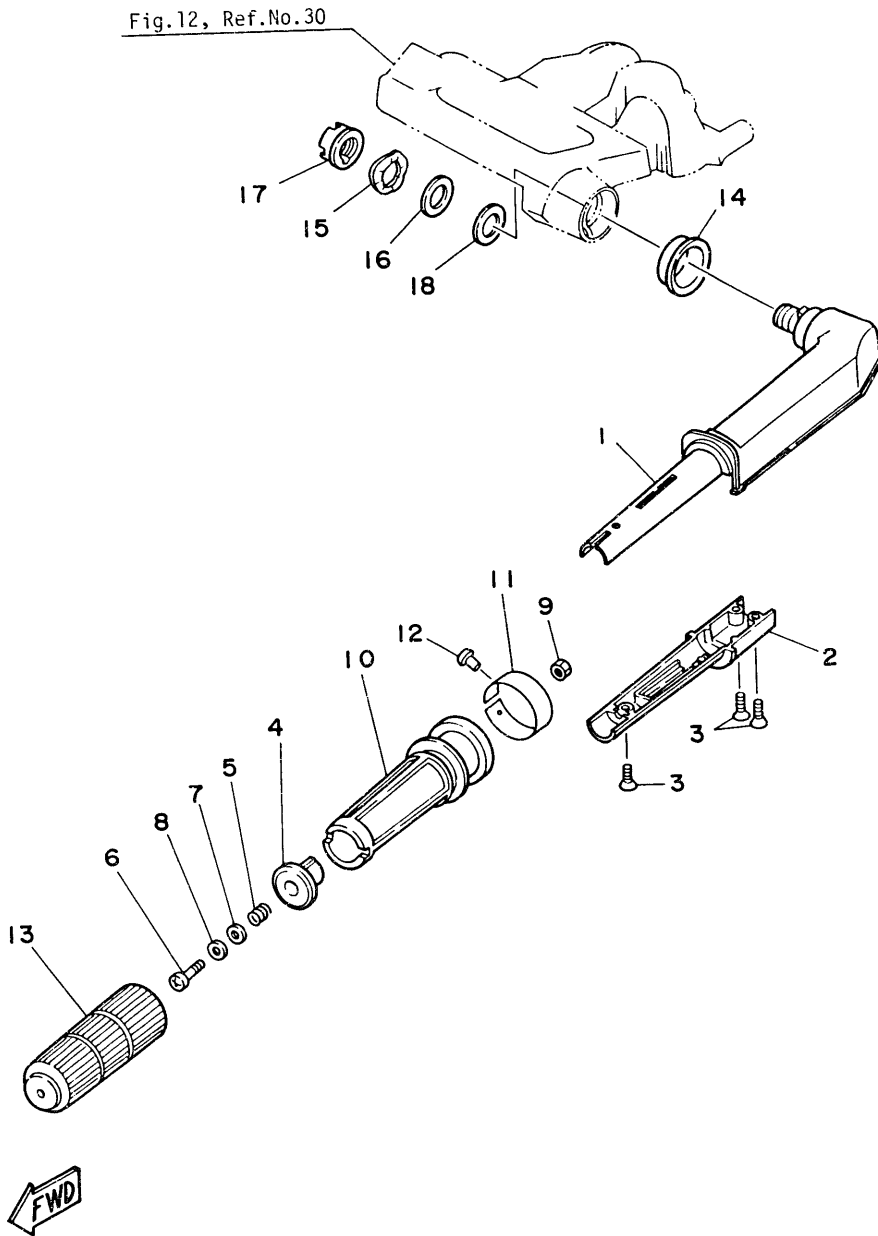


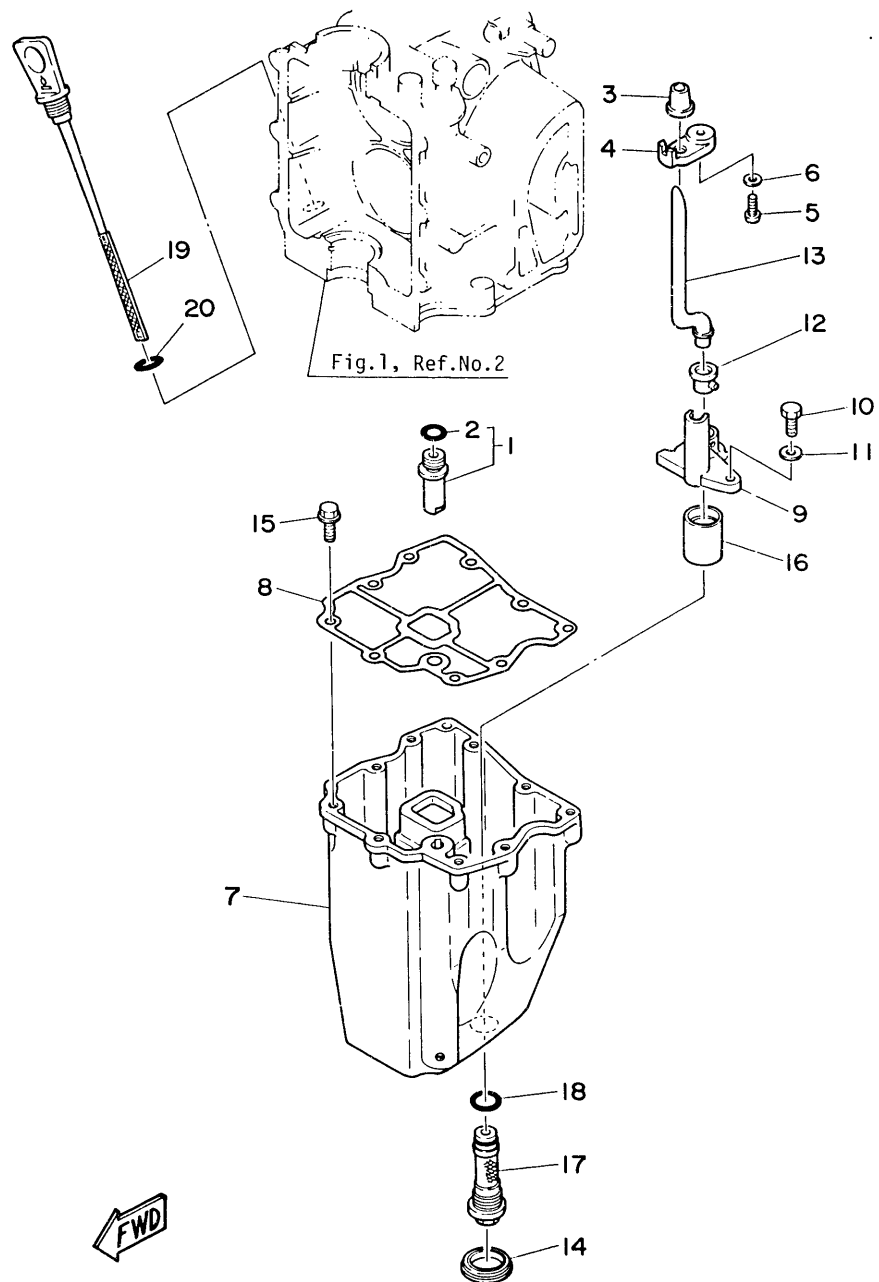
Fig. 14 STEERING

Ref.No.	Parts No.	Description	Q'ty	Ref.No.	Parts No.	Description	Q'ty
1	6G9-42111-00-EJ	HANDLE, steering 1	1	11	6G8-42137-01	INDICATOR, throttle (F9.9B Model)	1 U.R.
2	6G9-42112-00-EJ	HANDLE, steering 2	1		6J6-42137-00	INDICATOR, throttle (F8B Model)	1 U.R.
3	98780-05016	SCREW	3	12	90269-02001	RIVET	1
4	6G8-42126-00-94	FRICTION, steering handle grip	1	13	6G8-42177-00	RUBBER, handle	1
5	90501-23M42	SPRING, compression	1	14	90386-33M56	BUSHING	1
6	97890-06030	SCREW	1	15	90206-20M14	WASHER, wave	1
7	90201-06049	WASHER	1	16	90201-20M95	WASHER	1
8	90202-06007	WASHER	1	17	90179-20M09	NUT	1
9	95380-06700	NUT	1	18	90202-20M33	WASHER	1
10	6G8-42119-00	GRIP, steering handle	1				



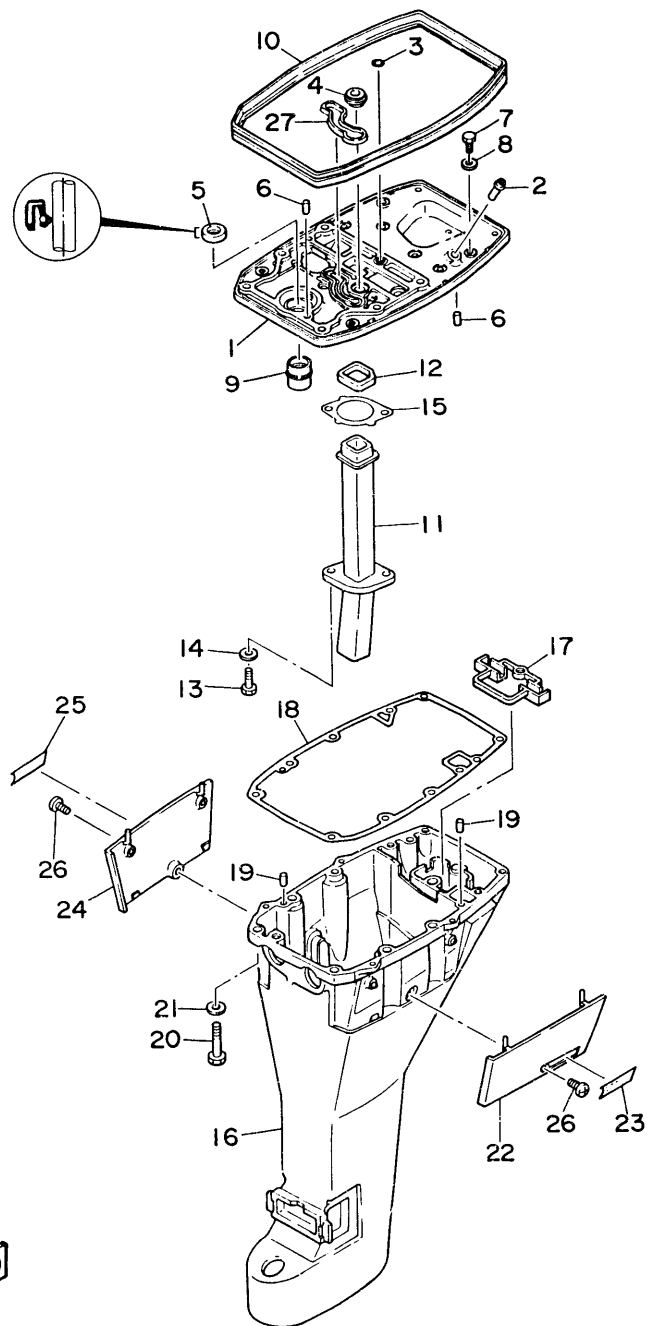


Ref.No.	Parts No.	Description	Q'ty	Ref.No.	Parts No.	Description	Q'ty
1	6G9-44112-00	STAY, handle gear shift	1	22	6G8-41242-01	ROD 2	1
2	97313-06012	BOLT	2	23	6G8-14493-00	STAY (F9.9B Model)	1 U.R.
3	92903-06600	WASHER	2		6J6-14493-00	STAY (F8B Model)	1 U.R.
4	6G9-44111-00-98	HANDLE, gear shift	1	24	6G8-44111-00	HANDLE, gear shift 1	1
5	98503-04016	SCREW, panhead	1	25	6G8-44159-00	HANDLE, gear shift 2	1
6	92903-04600	WASHER	1	26	682-44132-00	BUSHING	1
7	6G9-48311-00	CABLE (F9.9B Model)	1 U.R.	27	6G8-44141-00	LINK, shift rod	1
	6J7-48311-00	CABLE (F8B Model)	1 U.R.	28	91490-25020	PIN, cotter	1
8	6G8-41661-00-98	BRACKET 1	1	29	682-44116-00	SPRING	1
9	6G8-41662-00-98	BRACKET 2	1	30	682-44117-00	BRACKET 1	1
10	97395-06016	BOLT	2	31	97313-06012	BOLT	1
11	92990-06600	WASHER	2	32	90445-20ME4	HOSE	1
12	6G8-41654-00	NUT	2	33	6G9-44143-00	ROD, shift (Short)	1 U.R.
13	90159-05M06	SCREW, with washer	2		6C8-44143-10	ROD, shift (Long)	1 U.R.
14	6G6-41663-00	BRACKET 3	1	34	90170-06015	NUT	1
15	6G8-41212-00	ARM, accel.	1	35	95380-06700	NUT	1
16	97313-06030	BOLT	1	36	91790-05020	PIN	1
17	90387-06M58	COLLAR	1	37	92990-05600	WASHER	1
18	6G8-41238-01	JOINT, link	1	38	91490-16010	PIN, cotter	1
19	6G8-41241-01	ROD 1	1	39	6G8-26363-00	END, wire 1	1
20	95380-04600	NUT	1	40	6G8-26364-00	END, wire 2	1
21	6G8-41237-00	JOINT, link 2	1				



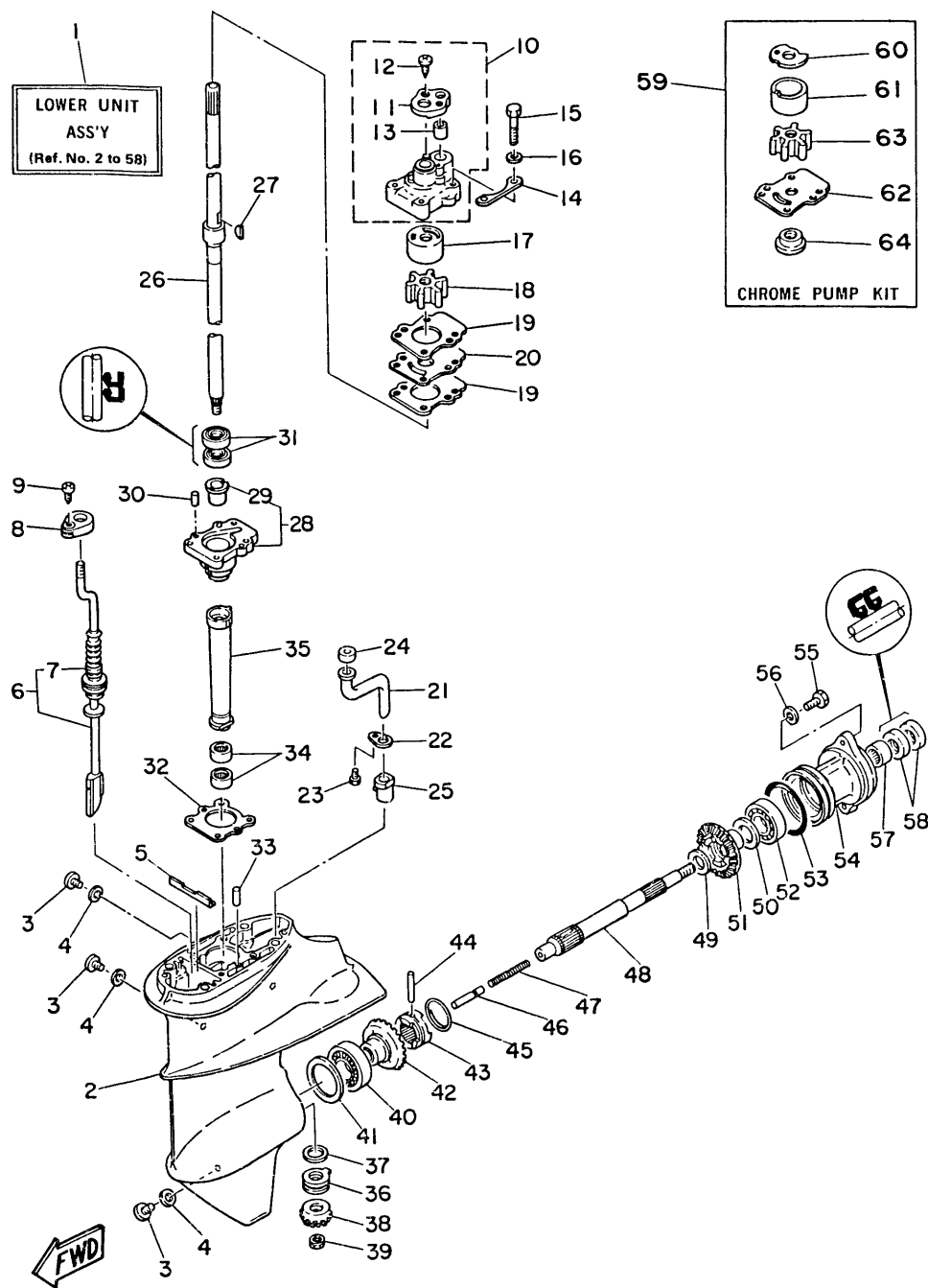
**Fig. 16 OIL PAN**

Ref.No.	Parts No.	Description	Q'ty	Ref.No.	Parts No.	Description	Q'ty
1	6G8-11575-00	RELIEF VALVE ASS'Y	1	11	92902-06600	WASHER	1
2	93210-12M62	O-RING	1	12	6G8-15315-00	SEAL	1
3	6G8-15379-00	SEAL	1	13	6G8-15397-00	PIPE	1
4	6G8-13487-00	GUIDE, oil seal	1	14	6G8-15316-00	DAMPER 1	1
5	98502-05012	SCREW, panhead	1	15	90105-06M33	BOLT	9
6	92902-05600	WASHER	1	16	6G8-13417-00	COVER, strainer	1
7	6G8-15311-00-9M	PAN, oil	1	17	6G8-13411-00	STRAINER, oil	1
8	6G8-15312-00	GASKET, oil pan	1	18	93210-16M64	O-RING	1
9	6G8-13412-00	HOUSING, strainer	1	19	6G8-15362-00	PLUG, oil level	1
10	97312-06016	BOLT	1	20	93210-13M63	O-RING	1



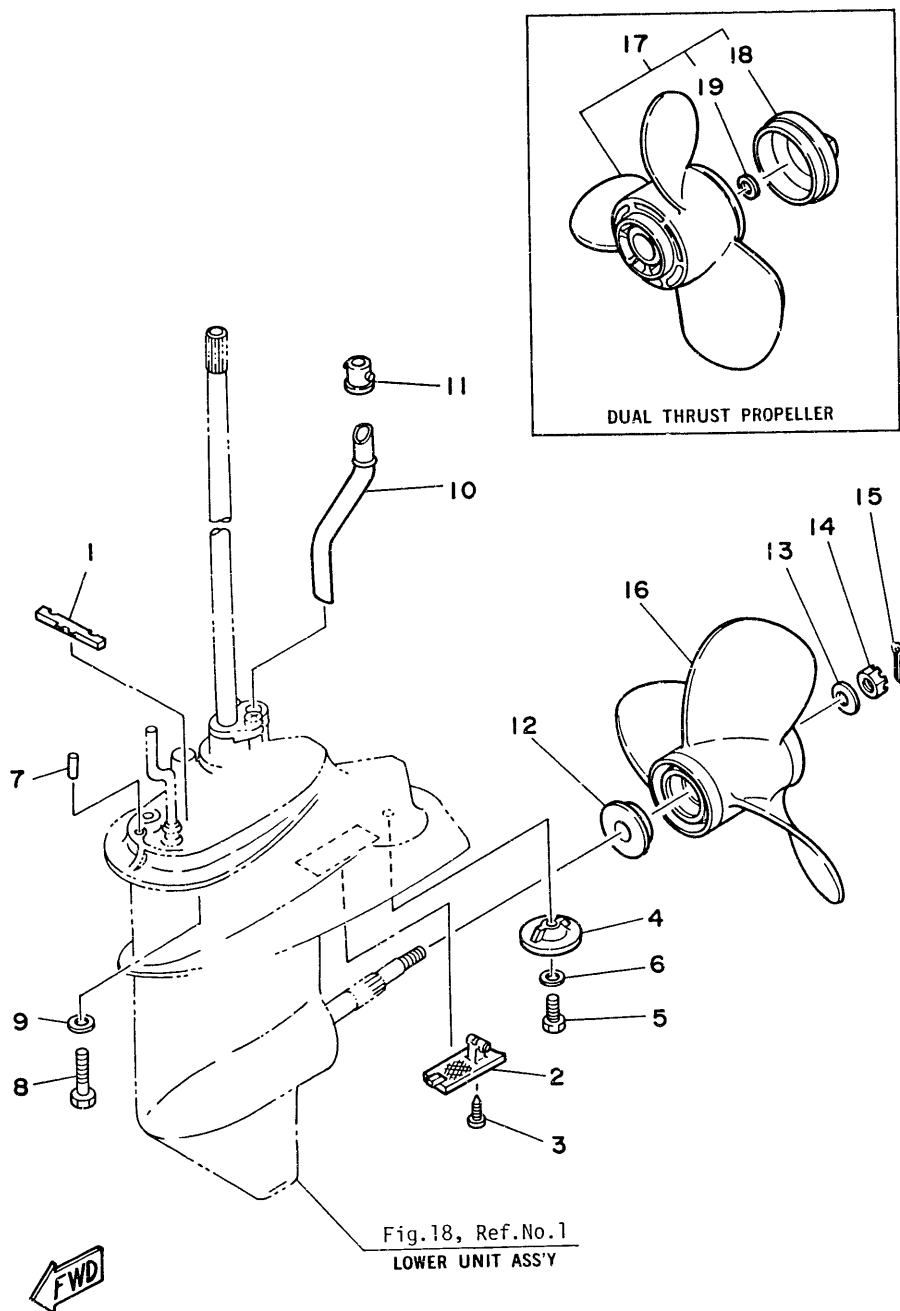
**Fig. 17 UPPER CASING**

Ref.No.	Parts No.	Description	Q'ty	Ref.No.	Parts No.	Description	Q'ty
1	6G8-41137-00-94	GUIDE, exhaust	1	15	6G8-41133-00	GASKET, exhaust manifold	1
2	6E5-24377-00	PIPE, joint	1	16	6G9-45111-00-EJ	CASING, upper (Short)	1 U.R.
3	93210-08M60	O-RING	1		6G8-45111-10-EJ	CASING, upper (Long)	1 U.R.
4	6G8-44367-00	DAMPER, water seal	1	17	6G8-45151-00	COVER, upper casing	1
5	93101-13M27	OIL SEAL	1	18	6G8-45113-00	GASKET, upper casing	1
6	93606-12019	PIN, dowel B	2	19	93606-12019	PIN, dowel B	2
7	97313-06020	BOLT	2	20	97395-08040	BOLT	6
8	92903-06600	WASHER	2	21	92990-08600	WASHER	6
9	6G8-45135-00	PIPE 1	1	22	6G8-42741-00-EJ	APRON 1	1
10	6G8-42716-00	SEAL	1	23	6G8-42791-00	MARK 1	1
11	6G8-41131-00	MANIFOLD, exhaust 1	1	24	6G8-42771-00-EJ	APRON 2	1
12	6G8-41138-00	SEAL, exhaust 1	1	25	6G8-42792-00	MARK 2	1
13	97395-06016	BOLT	2	26	90157-06M04	SCREW	2
14	92990-06600	WASHER	2	27	6G8-11355-00	SEAL, cylinder	1



**Fig. 18 LOWER & DRIVE 1**

Ref.No.	Parts No.	Description	Q'ty	Ref.No.	Parts No.	Description	Q'ty
1	6G9-45300-00-EJ	LOWER UNIT ASS'Y (Short)	1 U.R.	37	6E7-45587-00-05	SHIM (0.05mm)	1 U.R.
	6G9-45300-10-EJ	LOWER UNIT ASS'Y (Long)	1 U.R.		6E7-45587-00-08	SHIM (0.08mm)	1 U.R.
2	6E7-45311-00-EJ	CASING, lower	1		6E7-45587-00-12	SHIM (0.12mm)	1 U.R.
3	90340-08014	PLUG, straight screw	3		6E7-45587-00-30	SHIM (0.30mm)	1 U.R.
4	90430-08020	GASKET	3		6E7-45587-00-50	SHIM (0.50mm)	1 U.R.
5	682-45376-01	GUIDE, seal damper	1	38	6E7-45551-00	PINION (13T)	1
6	6G9-44150-00	SHIFT CAM ASS'Y (Short)	1 U.R.	39	90179-08M06	NUT	1
	6G9-44150-10	SHIFT CAM ASS'Y (Long)	1 U.R.	40	93332-00005	BEARING, taper roller	1
7	682-44147-00	. BOOT, shift rod	1	41	664-45567-00-05	SHIM (0.05mm)	1 U.R.
8	682-44176-00	BRACKET	1		664-45567-00-08	SHIM (0.08mm)	1 U.R.
					664-45567-00-12	SHIM (0.12mm)	1 U.R.
9	97780-50510	SCREW, panhead tapping	1		664-45567-00-30	SHIM (0.30mm)	1 U.R.
10	682-44300-01	HOUSING WATER PUMP ASS'Y	1		664-45567-00-50	SHIM (0.50mm)	1 U.R.
11	682-44312-00	. COVER, water pump housing	1	42	6E7-45560-00	GEAR 1 ASS'Y (27T)	1
12	97780-40112	. SCREW, panhead tapping	2	43	682-45631-00	CLUTCH, dog	1
13	682-44365-00	. DAMPER, water seal 1	1	44	90250-05010	PIN, straight	1
14	682-44328-00	PLATE	2	45	648-45633-00	RING, cross pin	1
15	97395-06040	BOLT	4	46	650-45635-00	PLUNGER, shift	1
16	92990-06200	WASHER	4	47	90501-14M06	SPRING, compression	1
17	682-44322-00	INSERT, cartridge	1	48	683-45611-00	SHAFT, propeller	1
18	682-44352-01	IMPELLER	1				
				49	90201-17682	WASHER	1
19	682-44315-00	GASKET, water pump	2	50	626-45577-00-01	SHIM (0.1mm)	1 U.R.
20	682-44323-00	OUTER PLATE, cartridge	1		626-45577-00-03	SHIM (0.3mm)	1 U.R.
21	683-44362-01	TUBE, water 2	1		626-45577-00-05	SHIM (0.5mm)	1 U.R.
22	683-44373-00	SET PLATE, water tube	1	51	6E7-45571-00	GEAR 2 (27T)	1
23	97395-06010	BOLT	1	52	93306-00501	BEARING (B6005)	1
24	683-44365-01	DAMPER, water seal	1	53	93210-57M09	O-RING	1
25	6E7-44366-00	DAMPER, water seal 2	1	54	683-45361-00-EJ	CAP, lower casing	1
26	6G9-45501-00	DRIVE SHAFT COMP. (Short)	1 U.R.	55	97395-06020	BOLT	2
	6G9-45501-10	DRIVE SHAFT COMP. (Long)	1 U.R.	56	92990-06600	WASHER	2
27	90280-03024	KEY, woodruff	1				
				57	93315-317U2	BEARING, needle	1
28	6E7-45331-00-9M	HOUSING, bearing	1	58	93101-17054	OIL SEAL	2
29	626-45316-09	. BUSHING	1				
30	93606-12019	PIN, dowel B	2				
31	93101-20048	OIL SEAL	2				
32	683-45315-00	PACKING, lower casing	1				
33	93604-08062	PIN, dowel B	1				
34	93315-314V0	BEARING, needle	2				
35	6E7-45536-00	SLEEVE, drive shaft	1				
36	93341-214U1	BEARING, thrust needle	1				



**Fig. 19 LOWER & DRIVE 2**

Ref.No.	Parts No.	Description	Q'ty	Ref.No.	Parts No.	Description	Q'ty
1	682-45375-01	DAMPER, seal 2	1	14	90171-10M01	NUT, castle	1
2	683-45214-01	COVER, water inlet 1	1	15	91490-30020	PIN, cotter	1
3	97780-50525	SCREW, panhead tapping	1	<b>PROPELLER ASS'Y</b>			
4	683-45251-00	ANODE	1	16	683-45941-00-EL	PROPELLER ASS'Y 1 (3x9 "x12"-J)	1 U.R.
5	97395-06016	BOLT	1		683-45943-00-EL	PROPELLER ASS'Y 2 (3x9 "x10 "-J)	1 U.R.
6	92990-06600	WASHER	1		683-45945-00-EL	PROPELLER ASS'Y 3 (3x9 "x9"-J)	1 U.R.
7	93606-12019	PIN, dowel 8	2		683-45947-00-EL	PROPELLER ASS'Y 4 (3x9 "x8"-J)	1 U.R.
8	97375-08035	BOLT	4		683-45949-00-EL	PROPELLER ASS'Y 5 (3x9 "x6 "-J)	1 U.R.
9	92990-08600	WASHER	4		683-45952-00-EL	PROPELLER ASS'Y 6 (3x9 "x9 "-J)	1 U.R.
10	6G9-44361-00	TUBE, water (Short)	1 U.R.	<b>DUAL THRUST PROPELLER</b>			
	6G8-44361-10	TUBE, water (Long)	1 U.R.	17	683-W4591-01-EL	PROPELLER ASS'Y (3x9 "x8"-J)	1 U.R.
11	626-44365-01	DAMPER, water seal 1	1		683-W4592-01-EL	PROPELLER ASS'Y (3x9 "x6 "-J)	1 U.R.
12	683-45987-01	SPACER 1	1	18	6E7-45616-00	NUT, propeller	1
13	90201-10M14	WASHER	1	19	90201-10M15	WASHER	1

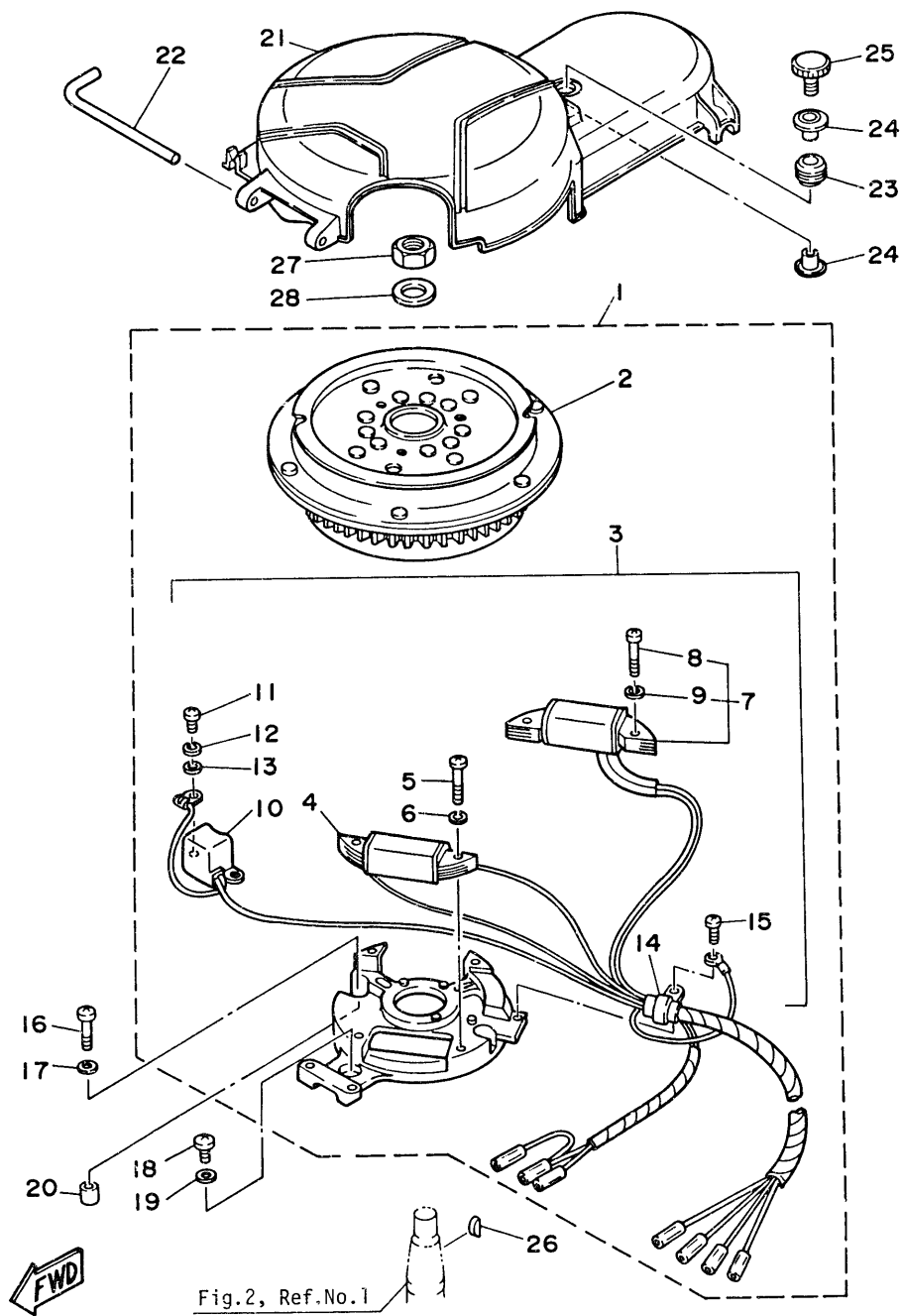


Fig. 20 C.D.I. MAGNETO ASS'Y

Ref.No.	Parts No.	Description	Q'ty	Ref.No.	Parts No.	Description	Q'ty
1	6G9-85500-F0	C.D.I. MAGNETO ASS'Y	1	15	97802-04008	. . SCREW	1
2	6G8-85550-J0	. . ROTOR ASS'Y	1	16	97803-06025	SCREW	2
3	6G9-85560-F0	. . BASE ASS'Y	1	17	92903-06600	WASHER	2
4	6G8-85520-00	. . CHARGE COIL ASS'Y	1	18	97803-06020	SCREW	1
5	97802-05025	. . SCREW	2	19	92903-06600	WASHER	1
6	92902-05100	. . WASHER	2	20	99510-08012	PIN, dowel A	2
7	6G9-81303-F0	. . LIGHTING COIL ASS'Y	1	21	6G8-81337-00	COVER, flywheel	1
8	97802-05025	. . . SCREW	2	22	6G8-42752-00	SHAFT	1
9	92902-05100	. . . WASHER	2	23	90480-15M31	GROMMET	1
10	6G8-85580-00	. . PULSER ASS'Y	1	24	90387-06M71	COLLAR	2
11	97803-05012	. . SCREW	2	25	6G8-81323-00	SCREW 1	1
12	92903-05100	. . WASHER	2	26	90280-05013	KEY, woodruff	1
13	92903-05600	. . WASHER	2	27	90170-12066	NUT	1
14	445-81328-20	. . CLAMP, Tead	1	28	90201-12472	WASHER	1

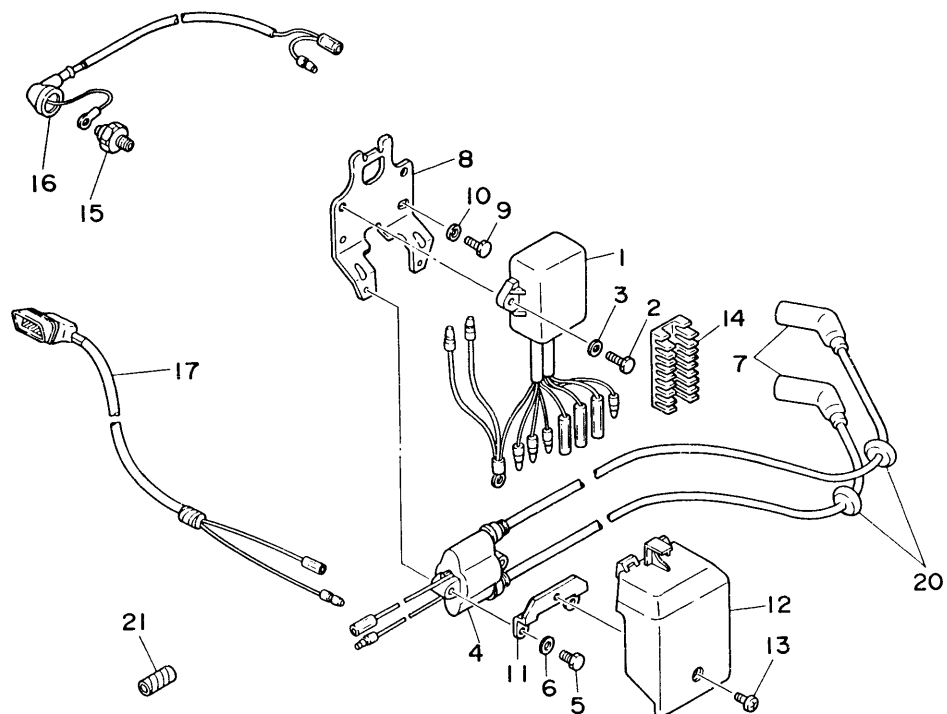
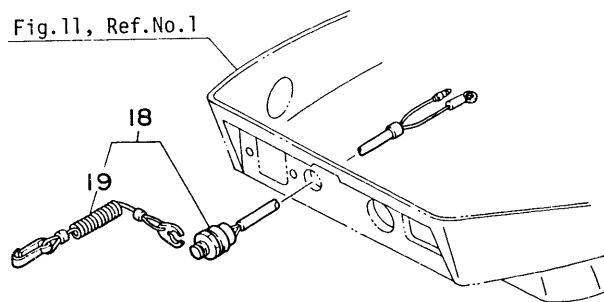


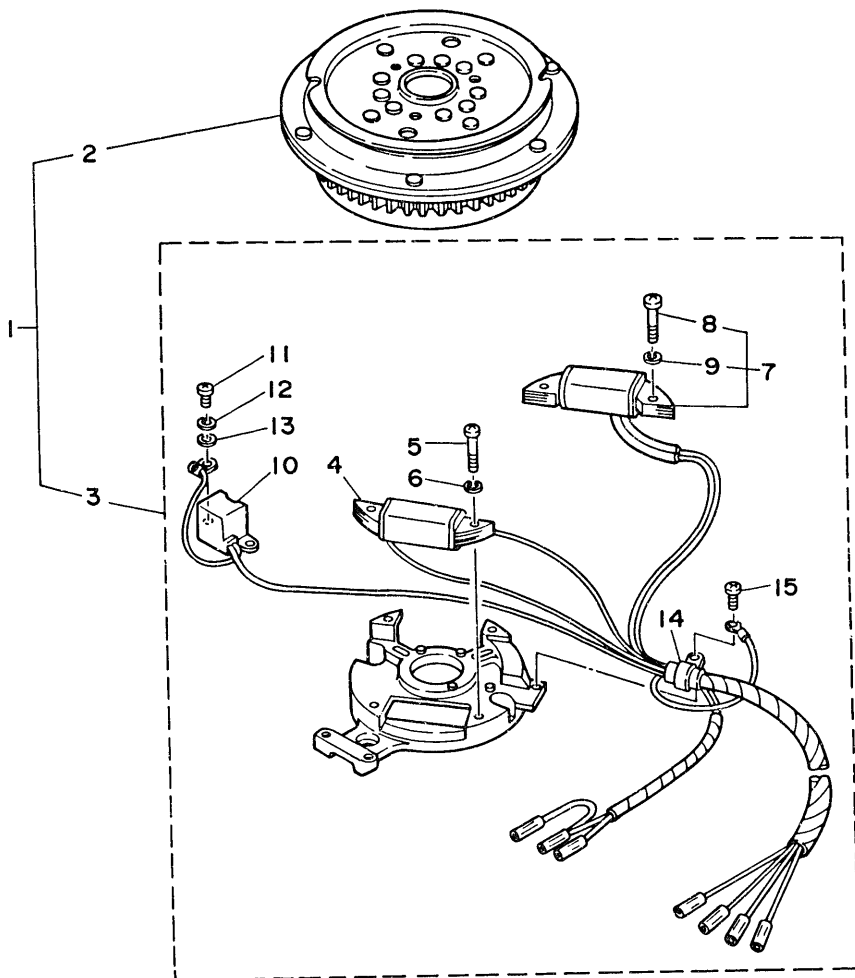
Fig.11, Ref.No.1



FWD

Fig. 21 ELECTRICAL

Ref.No.	Parts No.	Description	Q'ty	Ref.No.	Parts No.	Description	Q'ty
1	6G9-85540-20	C.D.I. UNIT ASS'Y	1	12	6G8-81916-00	COVER, terminal	1
2	97313-06025	BOLT	2	13	90157-06M03	SCREW	1
3	92903-06600	WASHER	2	14	6G8-82522-00	CLAMP	1
4	6G8-85570-20	IGNITION COIL ASS'Y	1	15	6G8-82504-00	OIL PRESSURE SWITCH	1
5	97313-06020	BOLT	2	16	6G8-82127-00	WIRE, lead 2	1
6	92903-06600	WASHER	2	17	6G8-83582-01	PILOT LAMP ASS'Y	1
7	6G8-82370-20	PLUG CAP ASS'Y	2	18	6G9-82575-00	KILL SWITCH ASS'Y	1
8	6G8-85542-00	BRACKET	1	19	682-82566-00	. STOPPER ASS'Y	1
9	97313-06020	BOLT	2	20	90480-25161	GROMMET	2
10	92903-06600	WASHER	2	21	90446-10M02	TUBE	1
11	6G8-85525-00	PLATE	1				

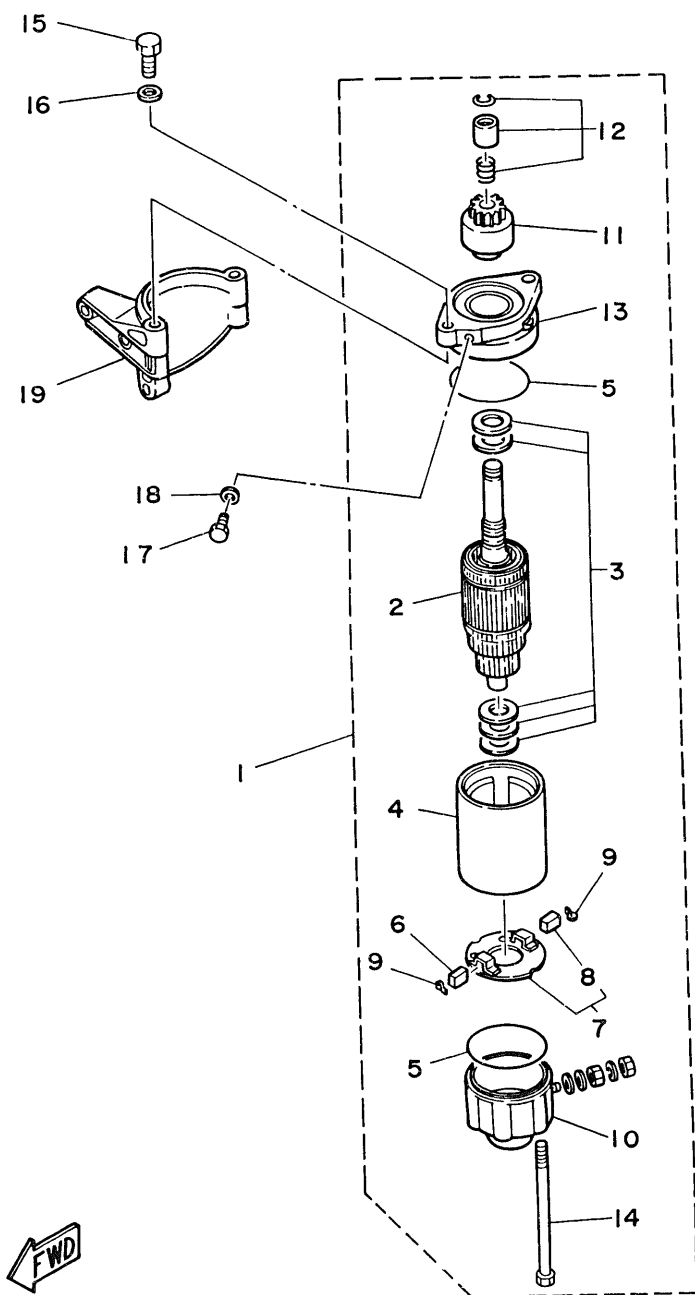


**Fig. 22 C.D.I. MAGNETO ASS'Y (F8BEM/F8BE/F9.9BEM/F9.9BE MODEL)**

Ref.No.	Parts No.	Description	Q'ty	Ref.No.	Parts No.	Description	Q'ty
1	6G9-85500-A0	C.D.I. MAGNETO ASS'Y	1	9	92902-05100	. . . WASHER	2
2	6G8-85550-K0	. ROTOR ASS'Y	1	10	6G8-85580-00	. . PULSER ASS'Y	1
3	6G9-85560-F0	. BASE ASS'Y	1	11	97803-05012	. . SCREW, panhead	2
4	6G8-85520-00	. . CHARGE COIL ASS'Y	1	12	92903-05100	. . WASHER	2
5	97802-05025	. . SCREW, panhead	2	13	92903-05600	. . WASHER	2
6	92902-05100	. . WASHER	2	14	445-81328-20	. . CLAMP, lead	1
7	6G9-81303-F0	. . LIGHTING COIL ASS'Y	1	15	97802-04008	. . SCREW, panhead	1
8	97802-05025	. . . SCREW, panhead	2				

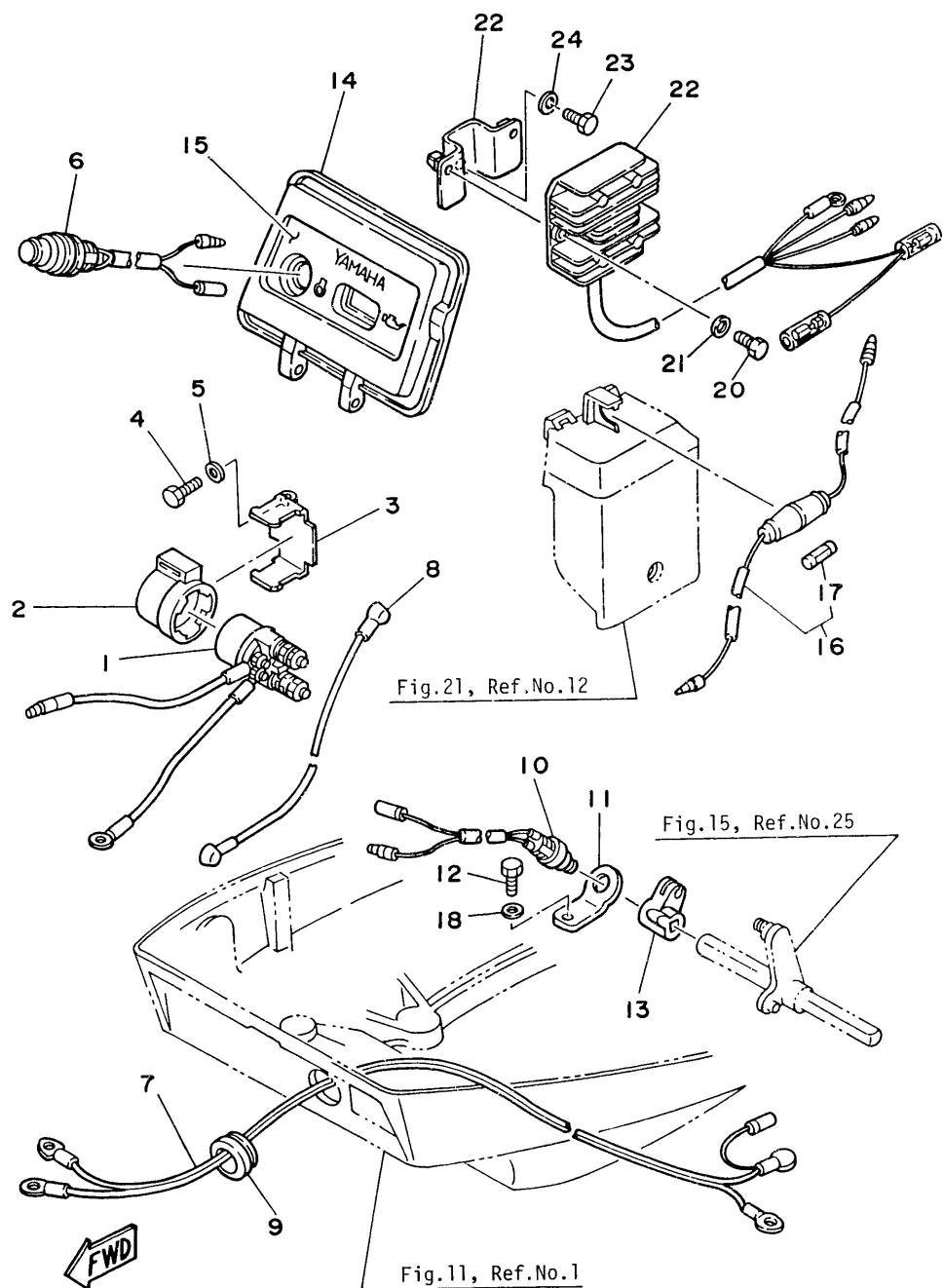
FWD





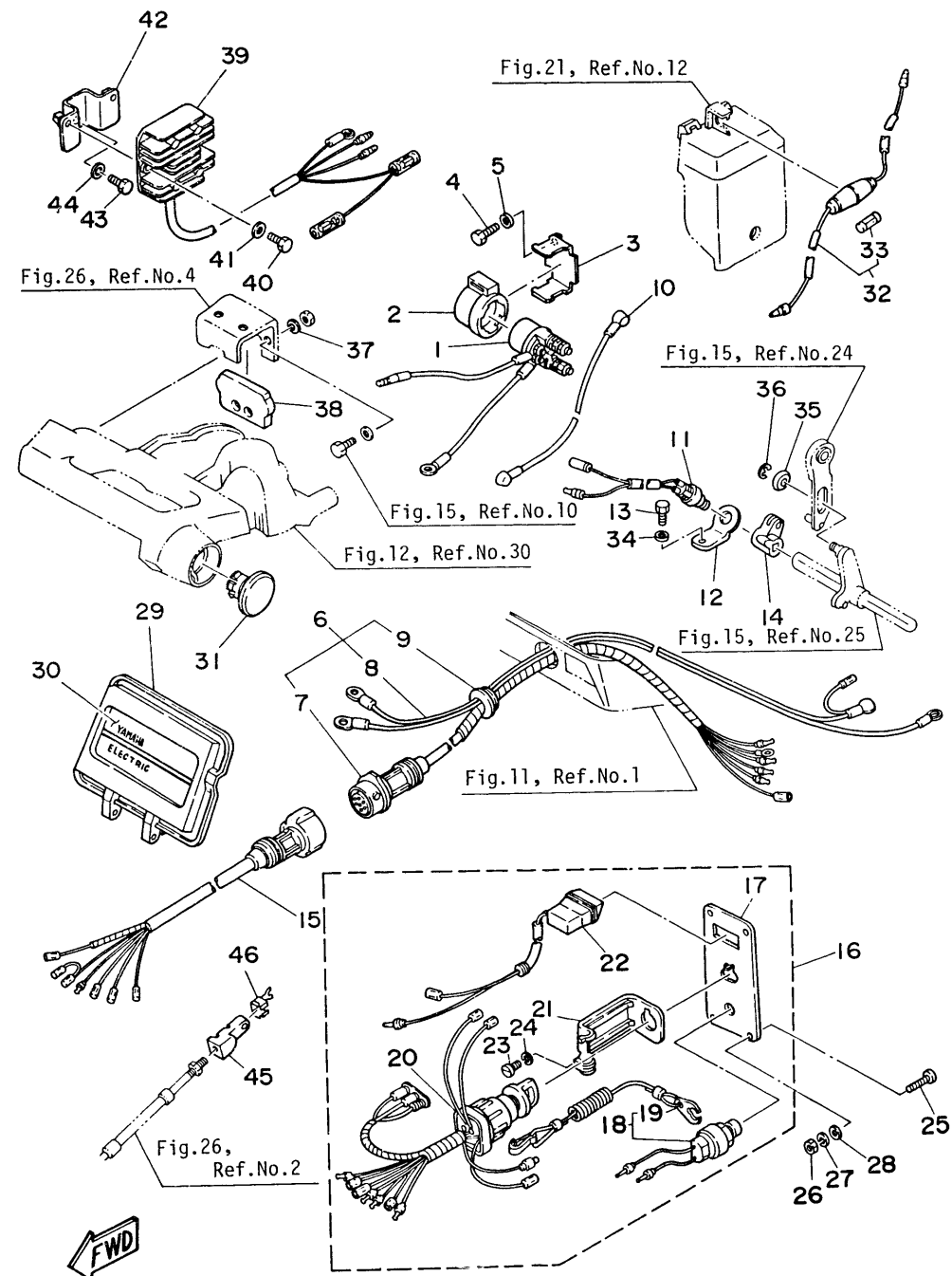
**Fig. 23 STARTING MOTOR (F8BEM/F8BE/F9.9BEM/F9.9BE MODEL)**

Ref.No.	Parts No.	Description	Q'ty	Ref.No.	Parts No.	Description	Q'ty
1	668-81800-10	STARTING MOTOR ASS'Y	1	11	689-81807-12	. PINION ASS'Y	1
2	689-81850-11	. ARMATURE ASS'Y	1	12	689-81857-11	. PINION STOPPER SET	1
3	689-81809-11	. WASHER KIT	1	13	6F5-81830-11	. FRONT COVER ASS'Y	1
4	689-81810-11	. STATOR ASS'Y	1	14	689-81826-10	. BOLT	2
5	689-81847-11	. O-RING	2	15	97313-08025	BOLT	2
6	689-81811-11	. BRUSH 1	1	16	92903-08600	WASHER	2
7	689-81840-11	. BRUSH HOLDER ASS'Y	1	17	97395-08016	BOLT	1
8	689-81812-11	. . BRUSH 2	1	18	92990-08600	WASHER	1
9	689-81813-10	. SPRING, brush	2	19	668-81822-40-94	BRACKET, electric starter	1
10	689-81820-11	. REAR COVER ASS'Y	1				



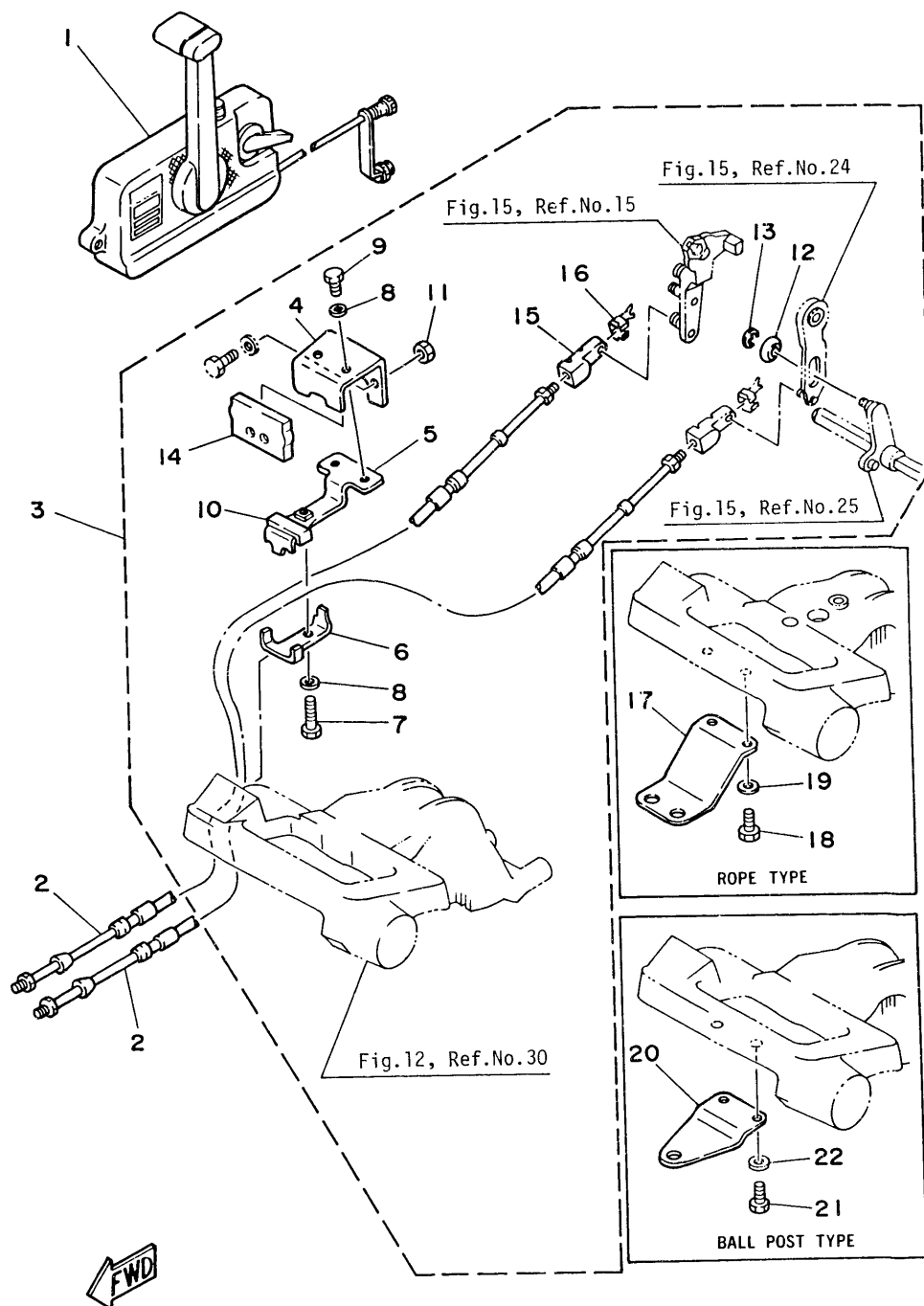
**Fig. 24 ELECTRIC PARTS (F8BEM/F9.9BEM MODEL)**

Ref.No.	Parts No.	Description	Q'ty	Ref.No.	Parts No.	Description	Q'ty
1	6J0-81941-10	STARTER RELAY	1	13	6G8-44125-00	LEVER, shift rod	1
2	6G1-81952-00	HOLDER, starter relay	1	14	6G8-42614-01	PANFL, front upper	1
3	6G8-81953-00	STAY, relay	1	15	6G8-42677-10	GRAPHIC, front	1
4	97313-06012	BOLT	1	16	6G8-82150-00	FUSE HOLDER ASS'Y	1
5	92903-06600	WASHER	1	17	663-82151-00	. FUSE (12V-20A)	1
6	6G8-81870-00	STARTING SWITCH ASS'Y	1	18	92903-06600	WASHER	1
7	6G8-82105-00	WIRE LEAD ASS'Y	1	19	6G8-81960-A0	RECTIFIER & REGULATOR ASS'Y	1
8	6G8-82117-00	WIRE, lead	1	20	97313-06016	BOLT	2
9	6G8-42724-40	GROMMET	1	21	92903-06600	WASHER	2
10	6H3-82540-00	NEUTRAL SWITCH ASS'Y	1	22	6G8-81948-00	BRACKET	1
11	6G8-82554-00	STAY, neutral switch	1	23	97313-06016	BOLT	1
12	97313-06012	BOLT	1	24	92903-06600	WASHER	1



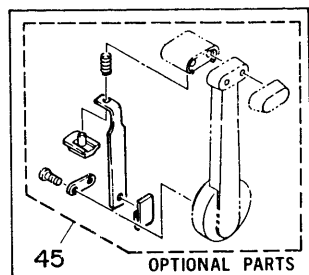
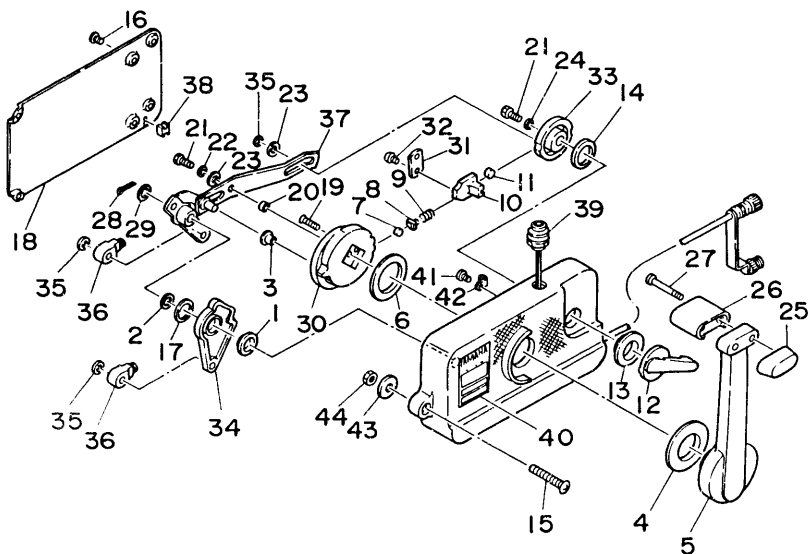
**Fig. 25 ELECTRIC PARTS (F8BE/F9.9BE MODEL)**

Ref.No.	Parts No.	Description	Q'ty	Ref.No.	Parts No.	Description	Q'ty
1	6J0-81941-10	STARTER RELAY	1	24	92903-04100	. WASHER	1
2	6G1-81952-00	HOLDER, starter relay	1	25	98903-05025	SCREW	4
3	6G8-81953-00	STAY, relay	1	26	95303-05600	NUT	4
4	97313-06012	BOLT	1	27	92903-05100	WASHER	4
5	92903-06600	WASHER	1	28	92903-05600	WASHER	4
6	6G8-82580-00	WIRE HARNESS ASS'Y	1	29	6G8-42614-11	PANEL, front upper	1
7	6G8-82590-00	. WIRE HARNESS ASS'Y	1	30	6G8-42677-20	GRAPHIC, front	1
8	6G8-82105-00	. WIRE, lead	1	31	6G8-42551-00	GROMMET 1	1
9	6G8-42724-50	. GROMMET	1	32	6G8-82150-00	FUSE HOLDER ASS'Y	1
10	6G8-82117-00	WIRE, lead	1	33	663-82151-00	. FUSE (12V-20A)	1
11	6H3-82540-00	NEUTRAL SWITCH ASS'Y	1	34	92903-06600	WASHER	1
12	6G8-82554-00	STAY, neutral switch	1	35	90387-06M73	COLLAR	1
13	97313-06012	BOLT	1	36	93430-04M03	CIRCLIP	1
14	6G8-44125-00	LEVER, shift rod	1	37	92980-06600	WASHER, plain	2
15	6G8-82586-00	EXTENSION, wire harness	1	38	6G8-48351-50	SEAL, rubber	1
16	6G8-82570-01	SWITCH PANEL ASS'Y	1	39	6G8-81960-A0	RECTIFIER & REGULATOR ASS'Y	1
17	6G8-82571-01	. PANEL, switch	1	40	97313-06016	BOLT	2
18	688-82575-01	. KILL SWITCH ASS'Y	1	41	92903-06600	WASHER	2
19	682-82556-00	. . STOPPER ASS'Y	1	42	6G8-81948-00	BRACKET	1
20	688-82510-11	. MAIN SWITCH ASS'Y	1	43	97313-06016	BOLT	1
21	663-82581-01	. STAY, cord clamp	1	44	92903-06600	WASHER	1
22	6G8-83582-01	. PILOT LAMP ASS'Y	1	45	6G8-26363-00	END, wire	1
23	98903-04008	. SCREW	1	46	6G8-26364-00	END, wire	1



**Fig. 26 REMOTE CONTROL**

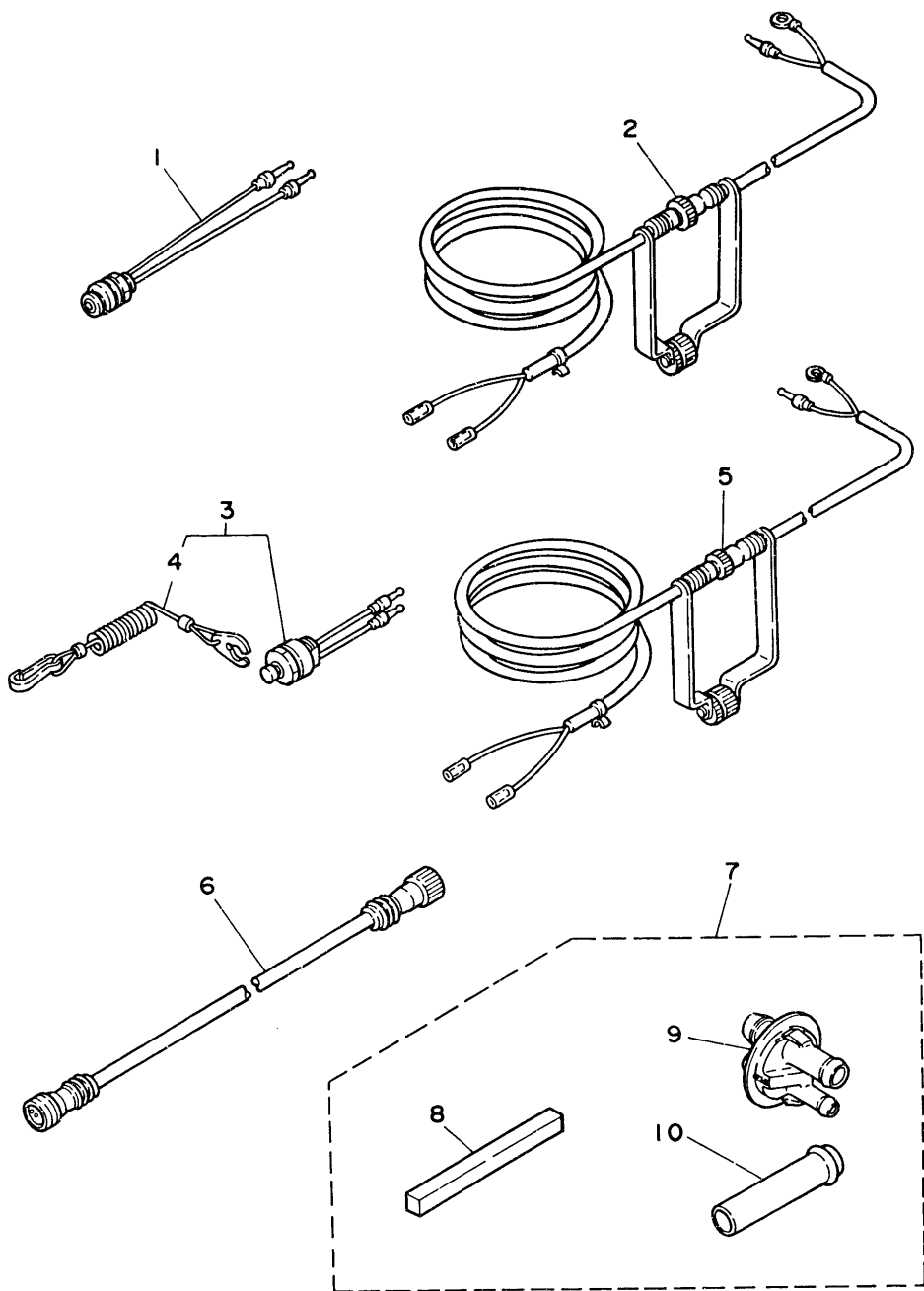
Ref.No.	Parts No.	Description	Q'ty	Ref.No.	Parts No.	Description	Q'ty
1	701-48101-10	REMOTE CONTROL ASS'Y 1 (See Fig. 27)	1	3	668-48501-02	ATTACHMENT KIT	1
2	701-48310-10	CABLE, remote control 6F	2 U.R.	4	668-48531-50	. BRACKET, remote control 1	1
	701-48310-20	CABLE, remote control 7F	2 U.R.	5	668-48532-50	. BRACKET, remote control 2	1
	701-48310-40	CABLE, remote control 8F	2 U.R.	6	668-48538-50	. CLAMP, cable	1
	701-48310-60	CABLE, remote control 9F	2 U.R.	7	97395-06030	. BOLT	1
	701-48310-80	CABLE, remote control 10F	2 U.R.	8	92990-06600	. WASHER	3
	701-48310-90	CABLE, remote control 11F	2 U.R.	9	97395-96012	. BOLT	2
	701-48320-00	CABLE, remote control 12F	2 U.R.	10	668-48565-50	. GROMMET	1
	701-48320-20	CABLE, remote control 13F	2 U.R.	11	95380-06700	. NUT	2
	701-48320-30	CABLE, remote control 14F	2 U.R.	12	90387-06M73	. COLLAR	1
	701-48320-50	CABLE, remote control 15F	2 U.R.	13	93430-04M03	. CIRCLIP	1
	701-48320-60	CABLE, remote control 16F	2 U.R.	14	668-48351-50	. SEAL, rubber	1
	701-48320-80	CABLE, remote control 17F	2 U.R.	15	668-26363-00	. END, wire 1	1
	701-48320-90	CABLE, remote control 18F	2 U.R.	16	668-26364-00	. END, wire 2	1
	701-48320-40	CABLE, remote control 19F	2 U.R.	17	668-48511-00	HOOK, steering (Rope Type)	1
	701-48320-70	CABLE, remote control 20F	2 U.R.	18	97395-06016	BOLT	2
	701-48350-00	CABLE, remote control 21F	2 U.R.	19	92990-06600	WASHER	2
	701-48350-10	CABLE, remote control 22F	2 U.R.	20	668-48511-10	HOOK, steering (Ball Post Type)	1
	701-48350-20	CABLE, remote control 23F	2 U.R.	21	97395-06016	BOLT	2
				22	92990-06600	WASHER	2



FWD

Fig. 27 REMOTE CONTROL ASS'Y

Ref.No.	Parts No.	Description	Q'ty	Ref.No.	Parts No.	Description	Q'ty
	701-48101-10	REMOTE CONTROL ASS'Y 1 (See Fig. 26, Ref. No. 1)	1	23	701-48246-00	. SPACER 1	2
1	701-48235-00	. BUSHING 2	1	24	92990-06300	. WASHER, internal tooth	1
2	701-48197-10	. WASHER, wave 2	1	25	701-48229-00	. GRIP, control lever 2	1
3	701-48252-00	. ROLLER, cam	1	26	701-48222-00	. GRIP, control lever 1	1
4	701-48234-00	. BUSHING 1	1	27	701-48282-00	. SCREW 2 (M5X50mm)	2
5	701-48221-00	. LEVER, control	1	28	701-48239-00	. SET PIN, plate	1
6	701-48196-11	. WASHER, wave 1	1	29	701-48266-00	. SPACER 2	1
7	701-48236-00	. ROLLER, detent	1	30	701-48232-00	. GEAR 1	1
8	702-48237-00	. ADAPTOR	1	31	701-48189-11	. RETAINER	1
9	702-48238-00	. SPRING, detent	1	32	98580-05010	. SCREW, panhead	2
10	701-48249-00	. ADAPTOR, spring	1	33	701-48153-12	. SHAFT, free accel.	1
11	701-48248-00	. ROLLER, free accel.	1	34	701-48271-00	. ARM, shift	1
12	701-48152-11	. KNOB, free accel.	1	35	93430-06024	. CIRCLIP	3
13	701-48243-00	. BUSHING 3	1	36	701-48345-30	. CABLE END, remote control 2	2
14	701-48198-10	. WASHER, wave 3	1	37	701-48261-00	. ARM, throttle	1
15	701-48281-00	. SCREW 1	3	38	701-48358-00	. ANCHOR, cable 2	1
16	701-48289-00	. SCREW 4	4	39	701-82550-50	. STOP SWITCH ASS'Y	1
17	701-48268-00	. SPACER 3	1	40	701-48126-00	. GRAPHIC	1
18	701-48213-00	. BACK PLATE	1	41	701-48283-00	. SCREW 3 (M4X10mm)	1
19	92780-06025	. SCREW, flathead	2	42	701-82594-00	. CLAMP	1
20	701-48255-00	. COLLAR 1	1	43	701-48287-00	. WASHER	3
21	97396-06018	. BOLT	2	44	95380-06600	. NUT	3
22	702-48288-00	. WASHER, plain	1	45	701-48280-00	NEUTRAL LOCK KIT	1



**Fig. 28 OPTIONAL PARTS**

Ref.No.	Parts No.	Description	Q'ty	Ref.No.	Parts No.	Description	Q'ty
		STOP SWITCH (5m)		6	689-82553-10	EXTENSION, wire lead (2m)	
1	689-82550-11	STOP SWITCH ASS'Y	1			(For Stop Switch)	1
2	6A0-82553-20	EXTENSION, wire lead	1			WELL-TYPE EXHAUST KIT	
		KILL SWITCH (5m)		7	6G8-W4537-00	WELL-TYPE EXHAUST KIT	1
3	689-82575-12	KILL SWITCH ASS'Y	1	8	6G8-45375-10	RUBBER, seal 2	1
4	682-82556-00	STOPPER ASS'Y	1	9	6G8-44391-10	NIPPLE, hose	1
5	6A0-82553-20	EXTENSION, wire lead	1	10	6G8-14611-00	PIPE, exhaust	1

**Fig. 29 REPAIR KIT**

Ref.No.	Parts No.	Description	Q'ty	Ref.No.	Parts No.	Description	Q'ty
1	6G8-W0001-00	POWER HEAD GASKET KIT	1	28	1J2-14397-00	. O-RING	2
2	6G8-41112-00	. GASKET, exhaust inner cover	2	29	5H0-14397-00	. O-RING	1
3	6G8-12414-00	. GASKET, cover	1	30	5Y1-14397-00	. O-RING	1
4	6G8-11181-00	. GASKET, cylinder head	1	31	6G9-W0001-20	LOWER UNIT GASKET KIT	1
5	93210-11M59	. O-RING	1	32	6G8-15312-00	. GASKET, oil pan	1
6	93210-13M63	. O-RING	1	33	93210-16M64	. O-RING	1
7	93210-24M79	. O-RING	1	34	93210-13M63	. O-RING	1
8	6G8-11351-00	. GASKET, cylinder	1	35	93210-08M60	. O-RING	1
9	93102-30M22	. OIL SEAL	1	36	93101-13M27	. OIL SEAL	1
10	93101-25M24	. OIL SEAL	1	37	6G8-41133-00	. GASKET, exhaust manifold	1
11	93102-18M21	. OIL SEAL	1	38	6G8-45113-00	. GASKET, upper casing	1
12	6G8-13329-00	. GASKET, pump	1	39	90430-08020	. GASKET	3
13	6G8-13646-00	. GASKET, intake manifold 2	2	40	682-44315-00	. GASKET, water pump 2	2
14	6G8-13645-00	. GASKET, intake manifold 1	1	41	93101-20048	. OIL SEAL	2
15	6G8-14198-00	. GASKET	1	42	683-45315-00	. PACKING, lower casing	1
16	6G8-15374-00	. GASKET, breather	1	43	93101-17054	. OIL SEAL	2
17	6G8-W0093-00	CARBURETOR REPAIR SET	1	44	93210-57M09	. O-RING	1
18	6G8-14198-00	. GASKET	1	45	682-45375-01	. DAMPER SEAL 2	1
19	6G8-14384-00	. GASKET, float chamber	1	46	626-44365-01	. DAMPER, water seal 1	1
20	647-14386-00	. PIN, float	1	47	682-W0078-00	WATER PUMP REPAIR KIT	1
21	654-14198-00	. GASKET	1	48	682-44365-00	. DAMPER, water seal 1	1
22	6G8-14323-00	. SCREW, air adjusting	1	49	682-44322-00	. INSERT, cartridge	1
23	6G8-14392-00	. VALVE, needle	1	50	682-44352-01	. IMPELLER	1
24	6G8-14385-00	. FLOAT ASS'Y	1	51	90280-03024	. KEY, woodruff	1
25	97803-04016	. SCREW	1	52	682-44315-00	. GASKET, water pump 2	2
26	92903-04100	. WASHER	1	53	682-44323-00	. OUTER PLATE, cartridge	1
27	33A-14369-00	. DIAPHRAGM	1	54	97395-06045	. BOLT	4

**NUMERICAL INDEX**

PART NO.	REF. NO.	PART NO.	REF. NO.	PART NO.	REF. NO.	PART NO.	REF. NO.	PART NO.	REF. NO.	PART NO.	REF. NO.
6G8-W0001-00	29- 1	6G8-12116-00	3- 3	6G8-14323-00	29-22	6G8-15312-00	29-32	6Y0-24207-80-24	9- 1	6G9-421111-00-EJ	14- 1
6G9-W0001-20	29-31	6G8-12117-00	3- 5	647-14334-00	5-11	6G8-15315-00	16-12	6Y1-24246-00	9- 2	6G9-42112-00-EJ	14- 2
6G9-W0070-20	10- 9	6G8-12117-10	3-15	6G8-14341-00	5- 9	6G8-15316-00	16-14	646-24251-01	8- 5	6G8-42119-00	14- 10
682-W0078-0A	18-59	30X-12118-00	3- 6	6J6-14341-00	5- 9	6G8-15346-00	6-24	6Y1-24256-80	9- 3	6G8-42126-00-94	14- 4
682-W0078-00	29-47	30X-12119-00	3- 7	6G8-14342-20	5- 5	6G8-15347-00	6-25	6Y1-24257-00	9- 4	6G8-42137-01	14-11
6G8-W0090-02-EJ	1- 1	6G8-12121-01	3- 2	6G8-14342-21	5- 5	6G8-15358-00	6-18	663-24268-00	9- 9	6J6-42137-00	14-11
6J6-W0090-00-EJ	1- 1	6G8-12146-00	3-11	648-14343-46	5- 8	6G8-15362-00	16-19	6Y0-24275-60	9- 6	6G8-42177-00	14-13
6G8-W0093-00	29-17	6G8-12151-00	3- 8	648-14343-47	5- 8	6G8-15363-00	1-39	6G1-24304-01	8- 1	6G8-42511-00-EJ	12-30
6G8-W4537-00	28- 7	6G8-12153-00	3-16	6A4-14344-31	5-33	6G8-15368-00-94	6-20	6G1-24305-00	9-15	6G8-42521-10-94	12-34
683-W4591-01-EL	19-17	6G8-12158-00	3-10	6G8-14345-00	5- 7	6G8-15369-00	6-21	6Y0-24306-02	9-10	6G9-42521-00-94	12-34
683-W4592-01-EL	19-17	6G8-12159-00	3- 9	6G8-14346-00	5-17	6G8-15371-00-94	6-23	6G8-24311-00	8- 6	6G8-42528-00	12-21
6G8-11111-00-94	1-18	6G8-12171-00	4-11	44J-14349-00	5-41	6G8-15373-00	1-29	6G8-24329-00	8- 2	6G8-42537-00	12-36
6G8-11133-10	1-19	6G8-12411-00	1-11	6G8-14355-00	5-25	6G8-15374-00	6-28	630-24329-00	9- 7	6G8-42551-00	25-31
6G8-11181-00	1-26	6G8-12413-00-94	1-12	14T-14367-00	5-29		29-16	650-24351-00	9-14	6G8-42561-00	12-27
	29- 4	6G8-12414-00	1-14	6G8-14368-00	5-26	6G8-15376-00	6-33		9-17	6G9-42610-21-EJ	10- 1
6G8-11191-00-94	1-28		29- 3	33A-14369-00	5-30	6G8-15379-00	16- 3	6Y1-24360-00	9-12	6J7-42610-21-EJ	10- 1
6G8-11197-00	1-37	6G8-13300-01	4-13		29-27	6G8-15393-00	6-17	6E5-24377-00	1-13	6G8-42613-00-EJ	10- 6
6G8-11325-00	1-35	6G8-13329-00	4-14	6G8-14371-00	5-31	6G8-15397-00	16-13		17- 2	6G8-42614-01	11-26
6G8-11326-00	6-48		29-12	6G8-14373-00	5-27	6G8-15710-10	7- 1	6E0-24378-00	6-42		24-14
6G8-11351-00	1-42	6G8-13411-00	16-17	6G8-14374-00	5-28	6G8-15711-00	7- 2	6G8-24410-00	8- 9	6G8-42614-11	25-29
	29- 8	6G8-13412-00	16- 9	6G8-14377-00	5-38	6G8-15712-00	7-30	6G8-24411-00	8-11	6G8-42615-00	10- 2
6G8-11355-00	17-27	6G8-13417-00	16-16	6G8-14381-00	5- 3	6G8-15713-00	7- 4	6G8-24421-00	8-10	6G8-42628-01	10-11
6G8-11356-00	1-31	6G8-13487-00	16- 4	6G8-14383-00	5-40	6G8-15714-00	7- 3	647-24610-03	9- 5	6G8-42629-01	11-28
6G8-11370-00	6- 6	6G8-13641-00-94	6- 5	6G8-14384-00	5- 2	6G8-15715-00	7- 7	6G8-26363-00	15-39	6G8-42651-00	10- 3
676-11372-00	1-30	6G8-13645-00	6- 7		29-19	6G8-15716-00	7-27		25-45	6G8-42652-00	10- 4
6G8-11395-00	6-35		29-14	6G8-14385-00	5-15	6G8-15719-00	7- 5		26-15	6G8-42677-00	11-27
6G8-11411-01	2- 1	6G8-13646-00	6- 1		29-24	6G8-15723-00	7- 6	6G8-26364-00	15-40	6G8-42677-10	24-15
6G8-11416-00	2- 4		29-13	647-14386-00	5- 4	6G8-15726-00	7-21		25-46	6G8-42677-20	25-30
6G8-11416-10	2- 4	6G8-13647-00	6-47		29-20	6G8-15727-00	7- 9		26-16	6G9-42678-20	10-10
6G8-11416-20	2- 4	6G8-14197-00	5-16	6G8-14392-00	5-14	6G8-15734-00	7-25	6G8-28100-00	9-18	6J7-42678-20	10-10
6G8-11426-00	2- 8	6G8-14198-00	6-14		29-23	6G8-15739-00	7-17	6G8-41111-00-9M	1- 6	6G8-42711-00-EJ	11- 1
6G8-11449-00	2- 7		29-15	14T-14396-00	5-44	6G8-15742-00	7-33	6G8-41112-00	1- 7	6G8-42716-00	17-10
6G8-11536-00-94	4- 2		29-18	1J2-14397-00	5-35	6G8-15746-00	7-23		29- 2	6G8-42719-00-EJ	11-23
6G8-11537-00-94	4- 6	654-14198-00	5- 6		29-28	6G8-15747-00	7-26	6G8-41113-00-9M	1- 8	6G8-42724-00	11- 7
6G8-11557-00	4- 3		29-21	5H0-14397-00	5-36	6F5-15752-00	7-12	6G8-41131-00	17-11	6G8-42724-40	24- 9
6G8-11575-00	16- 1	646-14212-01	5-22		29-29	663-15753-00	7-13	6G8-41133-00	17-15	6G8-42724-50	25- 9
6G8-11587-00	4- 5	654-14216-00	5-10	5Y1-14397-00	5-39	6G8-15754-00	7- 8		29-37	6G9-42724-00	11- 7
6G8-11610-00	2-10	650-14222-01	5-45		29-30	6G1-15755-00	7-34	6G8-41137-00-94	17- 1	6G8-42727-00	11-31
6G8-11610-10	2-10	650-14227-01	5-46	6G8-14399-00	6-34	6G8-15767-00	7-24	6G8-41138-00	17-12	6G8-42738-00-94	11-22
6G8-11610-20	2-10	6G8-14271-00	5-43	6G8-14478-00	6-13	6G8-15768-00	7-10	6G8-41212-00	15-15	6G8-42741-00-EJ	17-22
6G8-11631-00-97	2- 9	6G8-14272-00	5-34	6G8-14479-01-94	6-12	6G8-15770-00	7-38	6G8-41237-00	15-21	6G8-42748-00	11-18
6G8-11633-00	2-11	6G9-14301-00	5- 1	6G8-14493-00	15-23	6G8-15771-00	7-39	6G8-41238-01	15-18	6G8-42752-00	20-22
6G8-11635-00	2- 9	6J7-14301-01	5- 1	6J6-14493-00	15-23	6G8-15772-00	7-42	6G8-41241-01	15-19	6G8-42755-00	11-29
6G8-11636-00	2- 9	6G8-14309-00	6-41	6G8-14611-00	28-10	6G8-15779-00	7-31	6G8-41242-01	15-22	6G8-42771-00-EJ	17-24
6G8-11650-01	2- 5	6G8-14313-00	5-37	6G8-14997-00	5-12	689-15779-01	7-35	6G8-41654-00	15-12	6G8-42791-00	17-23
6G8-11654-00	2- 6	6G8-14318-27	5-32	6G8-15100-01-94	1- 2	6G8-15789-00	7-32	6G8-41661-00-98	15- 8	6G8-42792-00	17-25
6G8-12111-00	3- 1	648-14321-00	5-21	6G8-15311-00-9M	16- 7	663-15791-00	7-14	6G8-41662-00-98	15- 9	6G8-42811-00-94	11-12
6G8-12113-00	3- 4	6G8-14323-00	5-13	6G8-15312-00	16- 8	6G8-15794-00	7-22	6G8-41663-00	15-14	6G8-42815-00	11-11



NUMERICAL INDEX

PART NO.	REF. NO.	PART NO.	REF. NO.	PART NO.	REF. NO.	PART NO.	REF. NO.	PART NO.	REF. NO.	PART NO.	REF. NO.
6G8-42831-00	11-21	682-44315-00	29-40	6E7-45311-00-EJ	18- 2	701-48189-11	27-31	701-48320-90	26- 2	6G8-81960-A0	25-39
6G8-43111-00-EJ	12- 1		29-52	683-45315-00	18-32	701-48196-11	27- 6	701-48345-30	27-36	6G8-82105-00	24- 7
6G8-43112-01-EJ	12- 2	682-44321-40	18-60		29-42	701-48197-10	27- 2	701-48350-00	26- 2		25- 8
648-43114-01	12- 6	682-44322-00	18-17	626-45316-09	18-29	701-48198-10	27-14	701-48350-10	26- 2	6G8-82117-00	24- 8
616-43118-00-EJ	12- 3		29-49	6E7-45331-00-9M	18-28	701-48213-00	27-18	701-48350-20	26- 2		25-10
6G1-43136-00	12-15	682-44322-40	18-61	682-45344-00	18-64	701-48221-00	27- 5	6G8-48351-50	25-38	6G8-82127-00	21-16
6G8-43160-00	13- 5	682-44323-00	18-20	683-45361-00-EJ	18-54	701-48222-00	27-26		26-14	6G8-82150-00	24-16
6G8-43162-00	13- 6		29-53	6G8-45375-10	28- 8	701-48229-00	27-25	701-48358-00	27-38		25-32
6G8-43181-00	12- 7	682-44323-40	18-62	682-45375-01	19- 1	701-48232-00	27-30	6G8-48501-02	26- 3	663-82151-00	24-17
6G8-43311-11-EJ	12-18	682-44328-00	18-14		29-45	701-48234-00	27- 4	6G8-48511-00	26-17		25-33
6G9-43311-00-EJ	12-18	682-44352-01	18-18	682-45376-01	18- 5	701-48235-00	27- 1	6G8-48511-10	26-20	6G8-82370-20	21- 7
682-43318-01	12- 8		29-50	6G9-45501-00	18-26	701-48236-00	27- 7	6G8-48531-50	26- 4	6G8-82504-00	21-15
	13-26	682-44352-02	18-63	6G9-45501-10	18-26	702-48237-00	27- 8	6G8-48532-50	26- 5	688-82510-11	25-20
6G8-43319-00	13-21	6G8-44361-10	19-10	6E7-45536-00	18-35	702-48238-00	27- 9	6G8-48538-50	26- 6	6G8-82522-00	21-14
682-43339-01	12-13	6G9-44361-00	19-10	6E7-45551-00	18-38	701-48239-00	27-28	6G8-48565-50	26-10	6H3-82540-00	24-10
6G8-43373-00	12-24	683-44362-01	18-21	6E7-45560-00	18-42	701-48243-00	27-13	6G9-81303-F0	20- 7		25-11
682-43611-00	13-16	626-44365-01	19-11	664-45567-00-05	18-41	701-48246-00	27-23		22- 7	689-82550-11	28- 1
682-43614-00	13-14		29-46	664-45567-00-08	18-41	701-48248-00	27-11	6G8-81323-00	20-25	701-82550-50	27-39
682-43615-01	13-15	682-44365-00	18-13	664-45567-00-12	18-41	701-48249-00	27-10	445-81328-20	20-14	6A0-82553-20	28- 2
682-43616-00	13- 9		29-48	664-45567-00-30	18-41	701-48252-00	27- 3		22-14		28- 5
6G8-43617-00	13-13	683-44365-01	18-24	664-45567-00-50	18-41	701-48255-00	27-20	6G8-81336-00	1-34	689-82553-10	28- 6
6G8-43631-00	13- 7	6E7-44366-00	18-25	6E7-45571-00	18-51	701-48261-00	27-37	6G8-81337-00	20-21	6G8-82554-00	24-11
682-43641-00	13-10	6G8-44367-00	17- 4	626-45577-00-01	18-50	701-48266-00	27-29	6G8-81800-10	23- 1		25-12
682-43643-00	13-25	683-44373-00	18-22	626-45577-00-03	18-50	701-48268-00	27-17	689-81807-12	23-11	682-82556-00	25-19
682-43659-00	13-18	6G8-44391-00	11- 9	626-45577-00-05	18-50	701-48271-00	27-34	689-81809-11	23- 3		28- 4
6G9-43681-00	13-24	6G8-44391-10	28- 9	6E7-45587-00-05	18-37	701-48280-00	27-45	689-81810-11	23- 4	682-82566-00	21-19
6G8-43691-00	12-26	6G8-44517-00-94	12-40	6E7-45587-00-08	18-37	701-48281-00	27-15	689-81811-11	23- 6	6G8-82570-01	25-16
6G8-44111-00	15-24	6G8-44518-00	12-45	6E7-45587-00-12	18-37	701-48282-00	27-27	689-81812-11	23- 8	6G8-82571-01	25-17
6G9-44111-00-98	15- 4	6G8-44521-00	12-52	6E7-45587-00-30	18-37	701-48283-00	27-41	689-81813-10	23- 9	6G9-82575-00	21-18
6G9-44112-00	15- 1	6G8-44522-00	12-43	6E7-45587-00-50	18-37	701-48287-00	27-43	689-81820-11	23-10	688-82575-01	25-18
682-44116-00	15-29	6G8-44526-00	12-47	683-45611-00	18-48	702-48288-00	27-22	6G8-81822-40-94	23-19	689-82575-12	28- 3
682-44117-00	15-30	6G8-44532-01	12-53	6E7-45616-00	19-18	701-48289-00	27-16	689-81826-10	23-14	6G8-82580-00	25- 6
6G8-44125-00	7-43	6G8-44533-00	12-67	682-45631-00	18-43	701-48310-10	26- 2	6F5-81830-11	23-13	663-82581-01	25-21
	24-13	6G8-44551-01-EJ	12-54	648-45633-00	18-45	701-48310-20	26- 2	689-81840-11	23- 7	6G8-82586-00	25-15
	25-14	6G8-44552-01-EJ	12-55	650-45635-00	18-46	701-48310-40	26- 2	689-81847-11	23- 5	6G8-82590-00	25- 7
682-44132-00	15-26	682-44555-00	12-62	683-45941-00-EL	19-16	701-48310-60	26- 2	689-81850-11	23- 2	701-82594-00	27-42
6G8-44141-00	15-27	6G8-44557-00	12-61	683-45943-00-EL	19-16	701-48310-80	26- 2	689-81857-11	23-12	6G8-83582-01	21-17
6G8-44143-10	15-33	6G8-45111-10-EJ	17-16	683-45945-00-EL	19-16	701-48310-90	26- 2	6G8-81870-00	24- 6		25-22
6G9-44143-00	15-33	6G9-45111-00-EJ	17-16	683-45947-00-EL	19-16	6G9-48311-00	15- 7	6G8-81916-00	21-12	682-84381-00	11- 8
682-44147-00	18- 7	6G8-45113-00	17-18	683-45949-00-EL	19-16	6J7-48311-00	15- 7	6J0-81941-10	24- 1	6G9-85500-A0	22- 1
6G9-44150-00	18- 6		29-38	683-45952-00-EL	19-16	701-48320-00	26- 2		25- 1	6G9-85500-F0	20- 1
6G9-44150-10	18- 6	663-45119-00	12-20	683-45987-01	19-12	701-48320-20	26- 2	6G8-81948-00	24-22	6G8-85520-00	20- 4
6G8-44159-00	15-25	6G8-45135-00	17- 9	6G8-46241-00	4- 1	701-48320-30	26- 2		25-42		22- 4
682-44176-00	18- 8	6G8-45151-00	17-17	701-48101-10	26- 1	701-48320-40	26- 2	6G1-81952-00	24- 2	6G8-85525-00	21-11
6E0-44191-11	10-12	683-45214-01	19- 2		27-22	701-48320-50	26- 2		25- 2	6G9-85540-20	21- 1
682-44300-01	18-10	683-45251-00	19- 4	701-48126-00	27-40	701-48320-60	26- 2	6G8-81953-00	24- 3	6G8-85542-00	21- 8
682-44312-00	18-11	6G9-45300-00-EJ	18- 1	701-48152-11	27-12	701-48320-70	26- 2		25- 3	6G8-85550-J0	20- 2
682-44315-00	18-19	6G9-45300-10-EJ	18- 1	701-48153-12	27-33	701-48320-80	26- 2	6G8-81960-A0	24-19	6G8-85550-K0	22- 2

NUMERICAL INDEX

PART NO.	REF. NO.	PART NO.	REF. NO.	PART NO.	REF. NO.	PART NO.	REF. NO.	PART NO.	REF. NO.	PART NO.	REF. NO.
669-85560-F0	20- 3	90206-20M14	14-15	90467-08004	8- 8	92903-06100	8-16	92990-06600	19- 6	93430-05027	13-19
	22- 3	90209-45M09	12-35		8-20	92903-06200	10- 8		26- 8	93430-06024	27-35
668-85570-20	21- 4	90243-04001	12- 4	90480-09M35	11- 2	92903-06600	1-16		26-19	93450-09M01	1-20
668-85580-00	20-10	90249-06M16	13-11	90480-15M31	20-23		1-25		26-22	93450-15023	2-12
	22-10	90250-05010	18-44	90480-19031	11-32		1-33	92990-08100	12-17	93604-08062	18-33
90101-08M83	12-14	90266-04004	10- 5	90480-25161	21-20		4-16	92990-08600	12-51	93605-15065	12-31
90101-08M88	12-63	90269-02001	14-12	90501-10071	12-29		6- 4		12-64	93606-12019	17- 6
90105-06M33	16-15	90280-03M01	4- 7	90501-12M40	3-13		6-11		17-21		17-19
90105-08M36	1-22	90280-03024	18-27	90501-12M41	3-14		6-37		19- 9		18-30
90105-08M37	1-21		29-51	90501-14M06	18-47		7-41		23-18		19- 7
90109-06M25	12- 9	90280-05013	20-26	90501-18M06	12-22		8-17	93101-13M27	17- 5	93700-06004	12-19
90116-06M15	6- 8	90340-08014	18- 3	90501-23M42	14- 5		8-23		29-36	94701-00282	1-41
90116-06M26	5-42	90386-08M49	11-14	90506-26M01	13-20		15- 3	93101-17054	18-58	94701-00300	1-41
	6- 2	90386-33M56	14-14	90506-26M07	13-20		17- 8		29-43	95303-05600	25-26
90116-08M28	12-41	90386-37M47	12-37	90508-12M18	13- 8		20-17	93101-20048	18-31	95303-06700	6- 3
90119-06M12	1- 5	90386-37M48	12-39	90890-44373	7-18		20-19		29-41	95333-08700	7-11
90119-08M18	1- 4	90387-06M10	13-17	91490-12012	7-29		21- 3	93101-25M24	2- 3	95380-04600	15-20
90149-14030	12- 5	90387-06M57	13- 1	91490-16010	11-30		21- 6		29-10	95380-06600	27-44
90157-06M03	21-13	90387-06M58	11- 5		15-38		21-10	93102-18M21	4-12	95380-06700	6- 9
90157-06M04	17-26		15-17	91490-25020	15-28		24- 5		29-11		12-60
90159-05M06	15-13	90387-06M71	20-24	91490-30020	19-15		24-18	93102-30M22	2- 2		13- 3
90159-06M05	6-19	90387-06M72	11-16	91690-30012	12-28		24-21		29- 9		14- 9
90170-06015	15-34	90387-06M73	25-35	91790-05020	15-36		24-24	93210-08M60	17- 3		15-35
90170-12066	20-27		26-12	92503-06025	8-15		25- 5		29-35		26-11
90170-24M09	4- 4	90387-13M56	3-12	92580-06020	13-22		25-34	93210-08287	9-16	95680-06100	10- 7
90171-10M01	19-14	90430-08020	18- 4	92780-06025	27-19		25-41	93210-11M59	1-27		12-10
90179-08M06	18-39		29-39	92902-05100	7-20		25-44		29- 5	95780-06300	13-23
90179-20M09	14-17	90445-05ME6	11-33		20- 6	92903-08600	7-37	93210-12M62	16- 2	97305-06025	7-15
90185-08057	12-16	90445-08MF4	6-39		20- 9		23-16	93210-13M63	1-38	97312-06016	16-10
	12-46	90445-08MF5	6-38		22- 6	92980-06600	25-37		16-20	97313-06010	8-22
	12-65	90445-08MF6	6-43		22- 9	92990-04200	6-27		29- 6	97313-06012	6-36
90201-06M31	11- 6	90445-08MF7	6-40	92902-05600	16- 6	92990-05600	15-37		29-34		7-40
	11-15	90445-09M75	8-19	92902-06200	7-28	92990-06200	18-16	93210-16M64	16-18		15- 2
	12-23	90445-09065	6-31	92902-06600	16-11	92990-06300	27-24		29-33		15-31
90201-06M94	4-10		8- 7	92903-04100	5-24	92990-06600	1-10	93210-20M65	8-18		24- 4
90201-06049	14- 7	90445-09096	11-10		25-24		8- 4	93210-24M79	1-40		24-12
90201-08MA4	12-66	90445-11M52	6-30		29-26		11-20		29- 7		25- 4
90201-08M12	12-42	90445-11M66	1-17	92903-04600	8-14		11-25	93210-37M67	12-38		25-13
90201-10M14	19-13	90445-11M78	9-13		15- 6		12-11	93210-57M09	18-53	97313-06016	4- 9
90201-10M15	19-19	90445-11M79	9-11	92903-05100	20-12		12-33		29-44		11-13
90201-12472	20-28	90445-20ME4	15-32		22-12		12-49	93306-00501	18-52		24-20
90201-13201	4- 8	90446-10M02	21-21		25-27		12-57	93315-314V0	18-34		24-23
90201-17682	18-49	90460-38M06	12-44	92903-05600	6-16		12-59	93315-317U2	18-57		25-40
90201-20M95	14-16	90461-06M00	6-46		20-13		13- 4	93332-00005	18-40		25-43
90202-06007	14- 8	90465-08M07	6-44		22-13		13-28	93341-214U1	18-36	97313-06020	1-15
90202-20M33	14-18		6-49		25-28		15-11	93430-04M03	25-36		1-32
90206-08M13	11-17	90465-08M23	6-45	92903-06100	5-19		17-14		26-13		17- 7
90206-10M15	12-12	90465-08M26	8-21		7-16		18-56	93430-05027	13-12		21- 5

NUMERICAL INDEX

PART NO.	REF. NO.	PART NO.	REF. NO.	PART NO.	REF. NO.	PART NO.	REF. NO.	PART NO.	REF. NO.
97313-06020	21- 9	97802-05025	22- 8						
97313-06025	1- 9	97802-05040	22- 5						
	4-15	97803-04007	5-20						
	21- 2	97803-04016	5-23						
97313-06030	11- 3		29-25						
	15-16	97803-05012	20-11						
97313-06035	1-24		22-11						
97313-06040	11- 4	97803-06020	5-18						
97313-06045	6-10		20-18						
97313-08025	23-15	97803-06025	20-16						
97313-08030	7-36	97890-06030	14- 6						
97322-05012	7-19	98502-04010	6-32						
97375-08035	19- 8	98502-05012	16- 5						
97395-06008	13-27	98503-04014	8-13						
97395-06010	18-23	98503-04016	15- 5						
97395-06012	12-48	98503-05016	6-15						
	26- 9	98580-05010	27-32						
97395-06016	11-19	98580-05015	9- 8						
	11-24	98580-05025	1-36						
	15-10	98701-03008	8-12						
	17-13	98780-05016	14- 3						
	19- 5	98903-04008	25-23						
	26-18	98903-05025	25-25						
	26-21	99510-08012	20-20						
97395-06020	8- 3	99510-10114	1- 3						
	18-55		1-23						
97395-06025	12-25								
97395-06030	12-32								
	26- 7								
97395-06040	18-15								
97395-06045	12-56								
	29-54								
97395-06095	12-58								
97395-06135	13- 2								
97395-08016	23-17								
97395-08030	12-50								
97395-08040	17-20								
97396-06018	27-21								
97780-40112	18-12								
97780-40512	6-22								
	6-26								
	6-29								
97780-50510	18- 9								
97780-50525	19- 3								
97802-04008	20-15								
	22-15								
97802-05025	20- 5								
	20- 8								